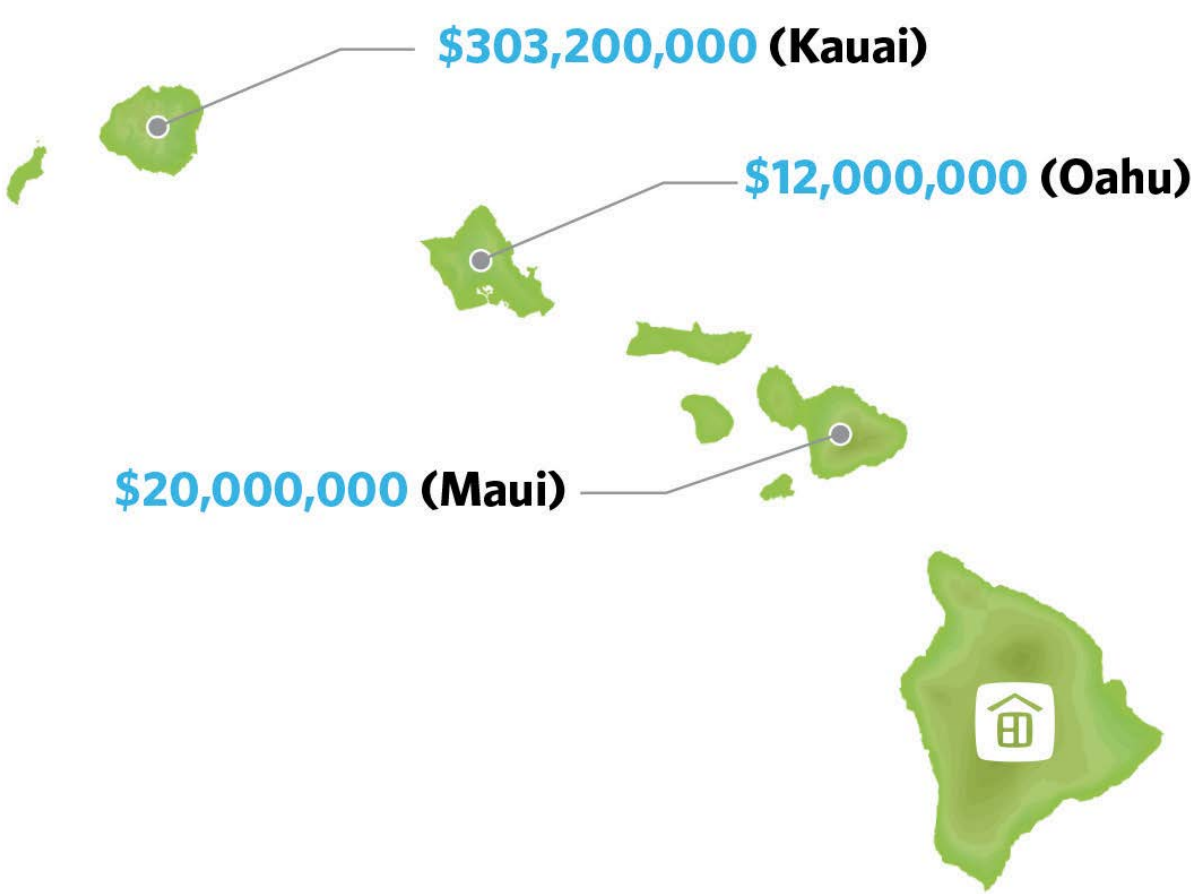


# Representing Buyers & Sellers on all islands.

## Neal Norman's 2018 Year-to-Date Sales Volume



We are not only your premier agents for the North Shore of Kauai, but anywhere in Hawai'i. Over the past year, we have represented Buyers and Sellers on properties ranging from luxury Honolulu penthouse condos, to oceanfront acreage offerings on Maui, and to the finest beachfront residences from Kihei to Lanikai.

*No matter where across the Hawaiian islands you are listing or looking to buy the best properties, we have the infrastructure to give you top of the line representation.*

**Neal Norman** REALTOR(B), RB-18048  
808.651.1777 | Neal@HawaiiLife.com



**HAWAI'I LIFE**  
REAL ESTATE BROKERS

**CHRISTIE'S**  
INTERNATIONAL REAL ESTATE

Hawai'i Life is an Exclusive Affiliate of Christie's International Real Estate  
HawaiiLife.com | RB-19928



### Ocean View Residence in Kukui'ula

Nestled at the top of the Kahalawai neighborhood within the community of Kukui'ula on Kauai's south shore. Ocean, mountain and coastline views from every room in the home.

**Poipu, Kauai | \$12.995M | 4,224 sqft living | 5BR / 5.5BA | MLS# 622397**



### Modern Estate Above Secret Beach

Sweeping ocean and mountain views from Namahana to Bali Hai. Includes guest house and a resort style pool and spa. Only a short walk or bike ride from the amenities of Kilauea town.

**Kilauea, Kauai | \$18M | 14 acres | 9,249 sqft living | 3BR / 4BA | MLS# 619190**



### Hanalei Beachfront

Two completely renovated and immaculately designed, licensed vacation rental homes in the heart of Hanalei Bay. Princeville's famed golf and tennis are only a five minute drive away.

**Hanalei, Kauai | \$16.9M | 5,597 sqft living | 6BR / 5BA | MLS# 619195**



### Haena Beachfront Compound

A unique opportunity to acquire 2 custom built homes with tennis court on 2.75 acres of land, set on the edge of Tunnels Beach.

**Hanalei, Kauai | \$13.5M | 7,200 sqft living | 8BR / 8BA + 3 Half Baths | MLS# 622659**

**Neal Norman** REALTOR(B), RB-18048  
808.651.1777 | Neal@HawaiiLife.com

**HAWAI'I LIFE**  
REAL ESTATE BROKERS

**CHRISTIE'S**  
INTERNATIONAL REAL ESTATE

Hawai'i Life is an Exclusive Affiliate of Christie's International Real Estate  
HawaiiLife.com | RB-19928







## Commanding Ocean Views in Kukui'ula

Set at the top of Kauai's Kukui'ula community, this exquisite, custom home has superior craftsmanship and attention to detail that is evident at every turn.

**Poipu, Kauai** | **\$11.5M** | **5,188** sqft living | **4BR / 4BA + 2 Half Baths** | MLS# 618850



## Kilauea 21 Acre Oceanfront Estate

This is an incredible real estate opportunity on the North Shore of Kauai: a more than 21 acre estate with 2,238 linear feet of oceanfront land bordering a secluded, sandy beach.

**Kilauea, Kauai** | **\$19M** | **4,458** sqft living | **4BR / 4BA** | MLS# 617045



## Oceanfront Vacation Rental in Poipu

Views in every direction are enjoyed from inside this home located along Poipu's Lawai Beach Road. Beautifully renovated and sold furnished.

**Poipu, Kauai** | **\$2.4M** | **4,660** sqft land | **1,728** sqft living | **3BR / 2BA** | MLS# 608815



## Kilauea Riverfront Acreage

This exceptional parcel of land along the breathtaking Kilauea Riverfront has easy access for boating, or paddling. Zoned for 2 homes and any related farm buildings.

**Kilauea, Kauai** | **\$2.35M** | **11.07** acres | **Partially Cleared** | MLS# 608565



## Pristine Oceanfront Vacation Rental with Pool

Great opportunity to own a highly successful oceanfront vacation rental home with pool in Poipu. The home and pool are fronted by a rare sandy beach and tide pools teeming with sea life. The home's elevation offers spectacular unobstructed views of the Pacific, the Poipu coastline and distant mountains. Entertain oceanfront on your large lanai, just steps from the well-appointed kitchen. The unique layout of the home is designed to bring friends and family together in the great room, while offering three private bedrooms on the second story.

**South Kauai** | **\$5.95M** | **0.47** acres | **2,164** sqft living | **3BR / 3BA** | **Beach Access** | **Sold Furnished** | MLS# 620505



## Luxury Living in Lihue, Kauai

This spectacular pod-style, single-level residence has mountain, ocean and harbor views. The vast great room features soaring ceilings and fourteen-foot glass doors to frame the view. The home includes an intimate living area, formal dining, and an expansive island surrounding the large gourmet kitchen. This is the perfect home for entertaining. The home's design compliments it's surroundings and includes two private master suites, an additional bedroom, an office and 3.5 baths for a combined 3,700 square feet.

**Lihue, Kauai** | **\$4.585M** | **2** acres | **3,703** sqft living | **3BR / 3.5BA** | MLS# 619653



**Neal Norman** REALTOR(B), RB-18048

808.651.1777 | Neal@HawaiiLife.com

**HAWAI'I LIFE**  
REAL ESTATE BROKERS

**CHRISTIE'S**  
INTERNATIONAL REAL ESTATE

*Hawaii'i Life is an Exclusive Affiliate of Christie's International Real Estate*  
**HawaiiLife.com** | RB-19928



**HAWAI'I LIFE**  
REAL ESTATE BROKERS

**CHRISTIE'S**  
INTERNATIONAL REAL ESTATE

*Hawaii'i Life is an Exclusive Affiliate of Christie's International Real Estate*  
**HawaiiLife.com** | RB-19928







# North Shore Kauai

Perfect surf, plentiful rainbows, warm water, and stunning scenery...

Pictured Property - 3630 Anini Road



**Hanalei Beachfront** - Licensed vacation rental with unsurpassed views of the crescent arch of the Bay, breaking surf, waterfall-clad mountains, and the setting sun.

**5156 Weke Road, Hanalei Bay** | 1.11 ac beachfront | 4,758 sqft living  
5BR / 5.5BA | MLS# 622400 | **\$29.75M**



**Anini Vista Estates** - Immaculate and tastefully designed ocean bluff home with spectacular ocean views. Successful vacation rental

**4201 Anini Vista Drive** | 3.02 ac land | 4,003 sqft living | 4BR / 4.5BA  
MLS# 622824 | **\$8.9M**



**Anini Beachfront** - A truly timeless Polynesian Estate with approximately 240 ft of beach frontage, ample privacy, and a separate guesthouse, in one of the most beautiful settings!

**3630 Anini Road** | 1 ac beachfront | 3,133 sqft living + 1,300 sqft lanais  
4BR / 4.5BA | MLS# 622539 | **\$16.75M**



Surrounded by coconut palms and mature fruit trees, with ocean and mountain views, this peaceful, gated property is walking distance to Secret Beach and Kalihiwai Bay.

**2899 Kalihiwai Road** | 3.22 ac land | 3,884 sqft living | 3BR / 3BA  
Barn & Garage / Studio | MLS# 618601 | **\$2.7M**



**Ben Welborn**  
REALTOR(B), RB-19358  
**808.639.7978**  
Ben@HawaiiLife.com



**Tiffany Spencer**  
REALTOR(S), RS-62202  
**808.652.5264**  
Tiffany@HawaiiLife.com

I  My Hawai'i Life

**2 Top Agents = 1 Solid Team.** Visit [Hi.HawaiiLife.com](https://hi.hawaiiLife.com) for more information, photos, and videos about these and other Kauai properties.

**HAWAII LIFE** | **CHRISTIE'S**  
REAL ESTATE BROKERS | INTERNATIONAL REAL ESTATE  
Hawai'i Life is an Exclusive Affiliate of Christie's International Real Estate. | RB-19928







# Premium View Location at Black Sand Makena

Kihei, Maui | \$12.75M | 0.82 acres | 5,485 sqft living | 5BR / 5BA | MLS 377267

Black Sand at Makena consists of a 7 lot oceanfront compound with a gated entry. Entering through the massive mahogany door one is captivated by the 20 foot ceilings that capture the full Makena coastline from the Pu'u (cinder cone) of Black Sand Beach through to the West Maui Mountains. The master suite with vaulted ceilings provides an equally impressive view plane of year-round sunsets over the expansive Pacific. When the whales arrive they invariably spend time around Black Sand where you can listen to the sing song of mother and calf. Extensive upgrades and beautifully maintained. Adjacent to the property is the Maluaka subdivision of Discovery.



**David W. Richardson**

REALTOR(B), RB-10780

808.870.9916 | Dave@HawaiiLife.com

**MauiOceanfront.com**

**HAWAII LIFE**  
REAL ESTATE BROKERS

**CHRISTIE'S**  
INTERNATIONAL REAL ESTATE

*Hawaii's Life is an Exclusive Affiliate of Christie's International Real Estate.*

**HawaiiLife.com** | RB-19928



# Makena Acreage

Makena, Maui | \$6.5M | 2.79 acres | MLS# 378831

Exceptional 2.79 acre estate property across from "Big Beach" in Makena. Utilities to the lot include a 3/4" water meter and underground electricity. You can build one luxury estate or consider subdividing the lot into four-1/2 acre Rural lots. The preliminary subdivision plan includes four lots and four future water meters. With the building site sitting at approximately 48' of elevation there are expansive views of Makena's pristine waters and Haleakala's rolling pastures. 0 Makena Rd is one of the last available parcels in Makena with so many options.

**Josh Jerman** REALTOR(B), RB-19728

808.283.2222 | Josh@HawaiiLife.com

**HAWAII LIFE**  
REAL ESTATE BROKERS

**CHRISTIE'S**  
INTERNATIONAL REAL ESTATE

**David W. Richardson** REALTOR(B), RB-10780

808.870.9916 | Dave@HawaiiLife.com

*Hawaii's Life is an Exclusive Affiliate of Christie's International Real Estate.*

**HawaiiLife.com** | RB-19928







# Pe'ahi Farms on Maui's North Shore

Pe'ahi Farms is a unique development concept inspired by a deep sense of purpose. Conscientious planning integrates just 16 custom estate sites centered around a farm, with a view to preserving Maui's rich farming heritage. Set atop 130 foot bluffs at Opana Point, Pe'ahi Farms' preserves the most fertile land at the heart of this 232-acre property. Home sites range in size from 2.7 to 25 acres. Offering 2.5 miles of completed private roads, private water, power to each lot and SMA approval, Pe'ahi Farms is ready for you to build your dream home.

Haiku Maui | Starting at **\$1.2M** | **2.7 to 25** acre lots | **Ocean and Mountain Views** | **PeahiFarms.com**



## Upcountry's Exclusive Kulamalu Hilltop

35 Ohia Lehua Place, **Pukalani, Maui** | **\$2.252M**  
**.24** acres | **2,981** sqft living | **4BR / 3BA**  
MLS# 378656



## Tranquil Estate in Kula 200

162 Hoopulua Drive, **Kula, Maui** | **\$1.84M** | **2.02** acres  
**4BR / 3BA** | **3,530** sqft living + **1,131** sqft Cottage  
MLS# 377499



## Timeless Plantation Estate

3077 Baldwin Avenue, **Upcountry, Maui** | **\$3.5M**  
**6.63** acres | **3BR / 4BA** | **2,968** sqft living  
MLS# 376322

**Josh Jerman** REALTOR(B), RB-19728  
808.283.2222 | Josh@HawaiiLife.com

**HAWAI'I LIFE**  
REAL ESTATE BROKERS

**CHRISTIE'S**  
INTERNATIONAL REAL ESTATE

Hawai'i Life is an Exclusive Affiliate of Christie's International Real Estate  
**HawaiiLife.com** | RB-19928



# Modern 2 Acre Estate in Makena

This private two-acre estate in Makena complements the natural elements and is connected to the land. There are seven structures spanning across the two acres encompassing a large kitchen and dining area, a master bedroom suite, two private guest suites, a theater room, gym, office, an 'ohana, and a three-car garage. Pathways through ginger, lpe bridges over lava rock stream beds, and lush lawns under verdant tree canopies connect the property's structures for a seamless indoor-outdoor living experience. Includes a 25-meter lap pool, infinity lounge pool, gym, and a fully-lit tennis court.

**Makena, Maui** | **\$12M** | **2.07** acres | **5,828** sqft living | **4BR / 4.5BA + Ohana** | MLS# 379985



**Matt Beall**  
PB, REALTOR(B), RB-17738  
808.346.7413 | Matt@HawaiiLife.com

**Josh Jerman**  
REALTOR(B), RB-19728  
808.283.2222 | Josh@HawaiiLife.com



# Keawakapu Beach Oceanfront Estate

Located directly on world-renowned Keawakapu Beach, this 1/2 acre property has approximately 95 linear feet of beach frontage. Location and luxury come together in this modern expression of a Hawaiian plantation home. Indoor and outdoor areas blend seamlessly with pocketing doors that open to the oceanfront lawn from the main residence and to the pool courtyard from the cottage. A new state-of-the art Photo Voltaic Solar System by Maui Solar Project and a new Central A/C system combine to minimize expenses and reduce the ecological footprint.

**South Maui** | **\$15.5M** | **.55** acres | **3,877** sqft living | **5BR / 4BA** | **Beach Access** | MLS# 378401

**Josh Jerman**  
REALTOR(S), RS-63854  
808.283.2222 | Josh@HawaiiLife.com  
**Josh.HawaiiLife.com**

**HAWAI'I LIFE**  
REAL ESTATE BROKERS

**CHRISTIE'S**  
INTERNATIONAL REAL ESTATE

Hawai'i Life is an Exclusive Affiliate of Christie's International Real Estate  
**HawaiiLife.com** | RB-19928







# Four Seasons Hualalai Resort

**Hualalai Resort, Big Island** | **\$10.9M** | **34,230** sqft land | **6,402** sqft living | **5BR / 5.5BA** | MLS# 619204

New contemporary home with 24 ft ceilings and integrated glass, producing an abundance of natural light. Bright interior design features Turkish limestone flooring, custom millwork and 9 foot solid mahogany doors. Each bedroom has bath with private shower garden. Family Room, Great Room, Dining Room and Master all flow seamlessly onto lanai, overlooking the infinity pool/spa, generous green spaces and lovely views over the Ke'olu private course out to the ocean/sunsets. Chef's kitchen with Wolf and Sub-Zero appliances and custom bar adjoins the Family Room, complete with a walk-in wine room. A work of art within Hawaii's finest private golf community.



**Steve Hurwitz**  
BROKER-IN-CHARGE  
808.937.9000  
Steve@MaunaKeaRealty.com  
**MaunaKeaRealty.com**



**Frank Schenk**  
REALTOR SALESPERSON  
808.896.9997  
Frank@Aloha77.com  
**MaunaKeaRealty.com**

  
**MAUNA KEA**  
REALTY  
A Hawai'i Life Company  
Exclusive Affiliate  
**CHRISTIE'S**  
INTERNATIONAL REAL ESTATE



# Kanae Estates at Hualalai Resort

An exquisite large custom residence in Kanae Estates, located in one of Hualalai Resort's premier residential location with extra-large homesites. Enjoy panoramic coastline, ocean and golf course views while entertaining on the expansive covered lanai. A short distance to the member's Keolu Golf Clubhouse for golf or dining.

**Hualalai Resort, Big Island** | **\$12.95M** | **5,396** sqft living | **5BR / 5.5BA** | MLS# 613291



# Hillside Villa 6200 at Hualalai Resort

This penthouse expands the entire upper floor of the building and one of only 3 penthouse units facing southwest, fronting the golf course and ocean with breath taking sunset. Custom water features, a private elevator and a fully upgraded kitchen with a built-in BBQ area. A short walk to the Four Seasons Resort Hotel and other resort amenities.

**Hualalai Resort, Big Island** | **\$4.65M** | **2,563** sqft living | **3BR / 3.5BA** | MLS# 600373



**Frank Schenk**  
REALTOR SALESPERSON  
808.896.9997  
Frank@Aloha77.com  
**MaunaKeaRealty.com**



**Nicolaas Schenk**  
REALTOR SALESPERSON  
808.896.9899  
Nic@Aloha77.com  
**MaunaKeaRealty.com**

  
**MAUNA KEA**  
REALTY  
A Hawai'i Life Company  
Exclusive Affiliate  
**CHRISTIE'S**  
INTERNATIONAL REAL ESTATE







# Kahala Avenue Oceanfront Estate Lot

4767 Kahala Avenue #D, Honolulu, Oahu | \$12M | 35,896 sqft land | 126 linear feet of ocean frontage | MLS# 201813468

Kahala Avenue Oceanfront Estate lot on sandy beachfront, with an expansive 126 linear feet of ocean frontage on one of Kahala's finest stretches of sand. Oceanfront estate lined, mile-and-a-half-long Kahala Avenue is one of the World's most prestigious residential neighborhoods with a mix of historic homes and contemporary residences. Easy access to the Kahala Hotel, Kahala shopping area and famous Waikiki for restaurants, luxury shopping and nightlife.

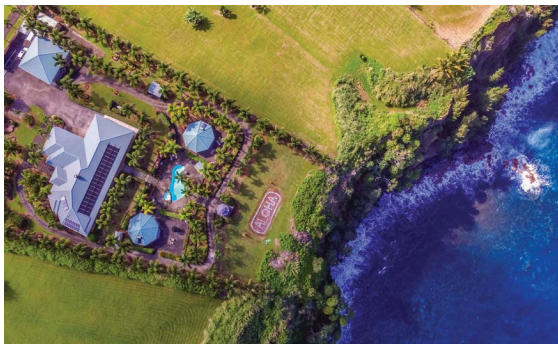
**Matt Beall** PB, REALTOR(B), RB-17738  
808.346.7413 | Matt@HawaiiLife.com

**Erik Hinshaw** REALTOR(B), RB-21068  
808.800.6278 | Erik@HawaiiLife.com

**HAWAI'I LIFE**  
REAL ESTATE BROKERS

**CHRISTIE'S**  
INTERNATIONAL REAL ESTATE

Hawai'i Life is an Exclusive Affiliate of Christie's International Real Estate  
HawaiiLife.com | RB-19928



# Resort Quality Estate and Grounds

Ninole, Big Island | \$2.9M | 2.06 acres | 4,287 sqft living | 7BR / 6BA | MLS# 614359

This meticulously crafted property, designed as a vacation rental, features walkways for leisurely strolls through the mature tropical gardens, a salt-water pool with waterfall accent, tiki-bar and spa area with air conditioned cabana units and private sun deck, an oceanfront gazebo that provides the perfect setting for weddings, whale watching and yoga. The grand entry to the main home opens to a sprawling great room with 12ft ceilings, center fireplace and a dream kitchen. Hi gloss slate flooring leads the way through stacking doors to a lanai that spans the ocean side of the home. Live your best Hawai'i Life!

**Denise Nakanishi** REALTOR(B), RB-17031  
808.936.5100 | Denise@HawaiiLife.com

**Mealoha Kraus** REALTOR(S), RS-62764  
808.938.8272 | Mealoha@HawaiiLife.com

**HAWAI'I LIFE**  
REAL ESTATE BROKERS

**CHRISTIE'S**  
INTERNATIONAL REAL ESTATE

Hawai'i Life is an Exclusive Affiliate of Christie's International Real Estate  
HawaiiLife.com | RB-19928

