

LUXURY HOME[®]

M A G A Z I N E

Hawai'i KAUAI • OAHU • MAUI • MOLOKAI • LANAI • BIG ISLAND

ISSUE 14.1



At The Newsstand: \$3.99

LUXURYHOMEMAGAZINE.COM

Paradise 808 Maui

Presented by Dennis & Martha on Pages 30 & 31



unit 1202 **\$2,150,000** | unit 1102 **\$1,995,000**

- 2 BD + Den, 2 BA, 1,691 - 1,704 sq. ft.
- Beautiful Diamond Head, ocean, marina, city and mountain views

unit 50 **\$2,250,000**

- 3 BD, 3.5 BA, 2,479 sq. ft.
- Rare & Incredibly spacious Corner unit with ocean & Auahi Street views

unit 305 **\$1,799,000**

- 2 BD, 2.5 BA, 1,700 sq. ft., Lanai 93 sq. ft.
- Unique duplex layout with a lanai, partial ocean and Kamakee Street views



unit 2306 **\$3,800,000**

- 3 BD, 2.5 BA, 2,023 sq. ft., Lanai 76 sq. ft.
- Luxurious Corner unit with breathtaking views of Diamond Head, Waikiki, ocean, mountain, beach park, and marina

unit 1603 **\$2,089,000**

- 1 BD, 2 BA, 1,139 sq. ft., Lanai 69 sq. ft.
- Stunning ocean, marina, mountain and sunset views



John "Jack" Tyrrell

President
Realtor®, CRS
CPA (not in public practice)
Lic. # RB-19880

E: Jack@jtchawaii.com
C: 808.306.6933



May Lew Tyrrell 廖富漢

Executive Vice President
Realtor®, MBA, GRI, CRS, CIPS
Lic. # RB-22693
WeChat: Mayinhawaii (普通话)

E: May@jtchawaii.com
C: 808.223.3364

OWA

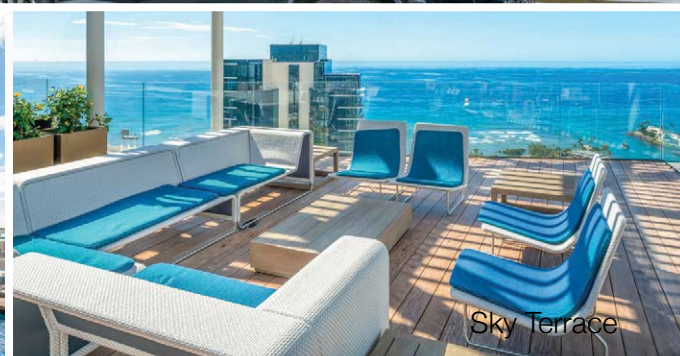
unit 2712 **\$1,550,000**

- 2 BD, 2 BA, 937 sq. ft.
- Amazing Corner unit with unique Juliet balcony door. Magic Island, ocean and mountain views

unit 1907 **\$975,000**

- 1 BD, 1 BA, 689 sq. ft.
- Beautiful ocean, marina, garden and sunset views

* Direct resident access to the flagship **Whole Foods Market**



WARD VILLAGE
Top Producing Agent by
Units & Dollar Volume
2014

WARD VILLAGE
Top Producing Agent by
Units & Dollar Volume
2015

For More Information:
808 532 3330
www.jtchawaii.com



Jack Tyrrell & Company



@jtchawaii

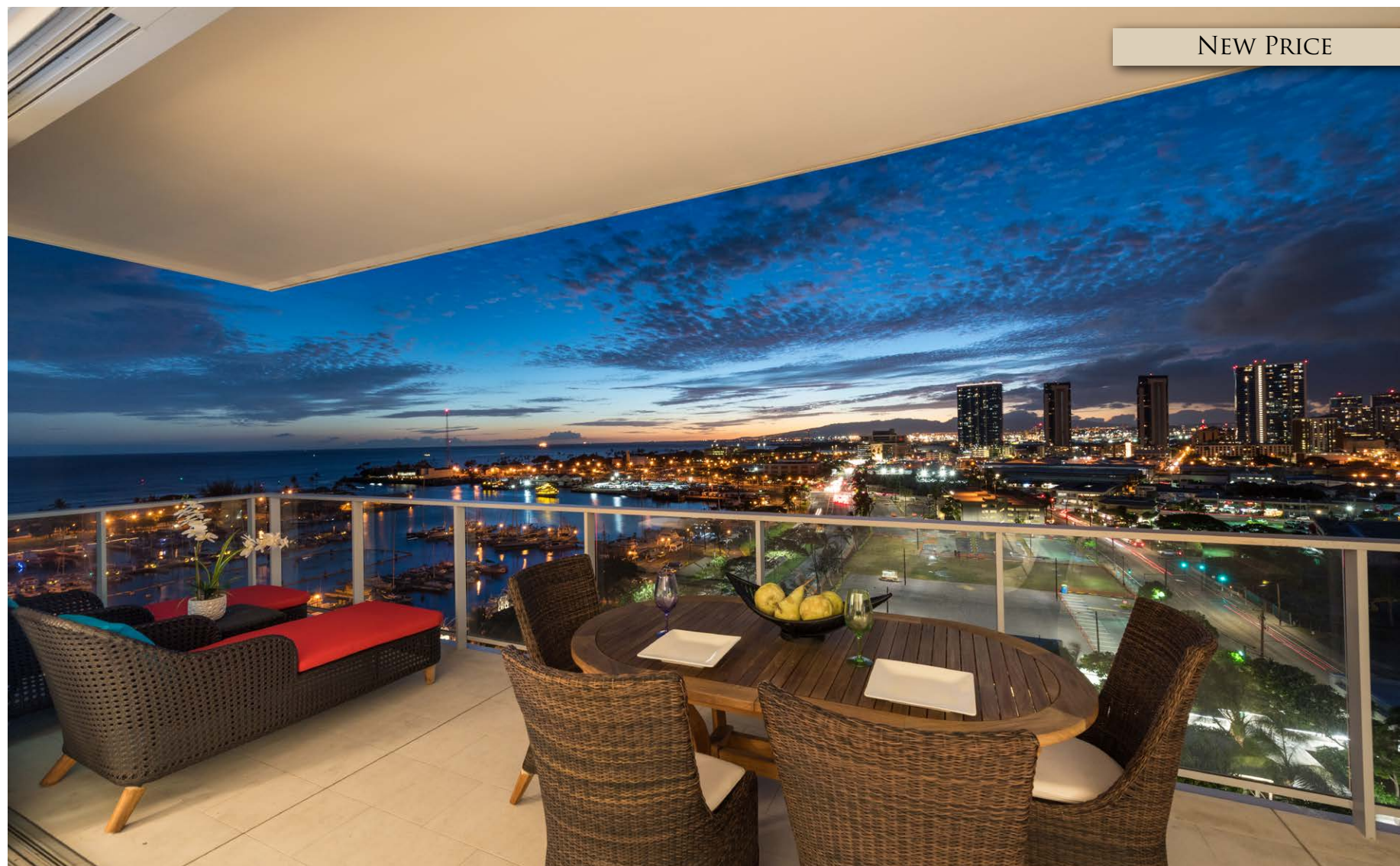


@jtchawaii

JACK TYRRELL
& COMPANY

A Real Estate Brokerage Corporation

* The information presented herein is provided as is, without warranty expressed or implied of any kind. Information herein deemed reliable but not guaranteed.



NEW PRICE



WAIEA #1301

2,713 SQFT | 3BR/3.5BA | MLS# 201820242
\$4,490,000 | Kaka'ako

Enjoy luxurious living with this corner unit in Waiea. Contemporary design, upgraded polished Black Sea travertine flooring and private foyer open directly to spectacular views. Miele appls in a chef's kitchen. Spa-like mstr bth with soaking tub/shwr. Diamond Hd, city & ocean vistas from lanai. SOLD fully furnished. Services & amenities are first-class, w/concierge desk, shuttle services to Ala Moana Shopping Ctr, party, theatre & massage rooms, dog park, infinity edge ocean-view pool, whirlpool spa, sauna, steam rm, sunset bar, BBQ's, cabanas, playground, golf simulator, fitness cntr, yoga rm, guest suites, 2 prkg stalls. Video: <https://bit.ly/2Np28SK>



Marti Hazzard

RA, Luxury Property Specialist
RS-62782
Direct: 808.738.3948
Cell: 808.478.1200
Martih@cbpacific.com
www.martihazzard.com



Samantha Castanera-Ahn

RA, RS-44101
Direct: 808.738.3473
Cell: 808.284.3803
SamanthaA@cbpacific.com



SOLD



5403 KALANIANA'OLE HIGHWAY

14,840 SQFT | 62,334 SQFT LAND | 7BR/8.5BA | MLS# 201725778
\$15,845,000 | Niu Beach

NIU BEACH ESTATE. Stunning, sophisticated & modern 1.43-acre oceanfront estate with 185 linear feet of beach frontage, tennis court/tennis pavilion, sparkling pool & Jacuzzi with pool pavilion & tropical landscaping. 3 master suites, 3 bedrooms and a caretaker suite + 8.5 baths by Agape of Italy. Multiple entertaining areas open to expansive seaside lanais with mesmerizing views.

SOLD



1234 MOKULUA DRIVE

6,222 SQFT | 20,079 SQFT LAND | 5BR/4.5BA | MLS# 201815979
\$12,150,000 | Lanikai

THE MODERN BEACH HOUSE. Designed by the late Vladimir Ossipoff, known as the master of Hawaii architecture whose designs seamlessly blend nature & all its surroundings. Such is the case with this stunning mid-century modern oceanfront estate with direct Mokulua island views. This treasure consists of a 3 BR + den main residence, 2 BR cottage + pool pavilion w/ gym.

SOLD



3636 DIAMOND HEAD CIRCLE

4,601 SQFT | 21,697 SQFT LAND | 4BR/3.5BA | MLS# 201816681
\$4,425,000 | Diamond Head

A RESORT WITHIN ITSELF. Stunning single level 4 BR home, designed by prominent architect Geoffrey Lewis, rests on an estate-sized parcel in coveted Diamond Head. An indoor-outdoor floor plan seamlessly connects to wrap around poolside lanais for entertaining. A dream master suite w/ dual walk-in closets overlooks a gorgeous pool/spa & tropical landscaped grounds. Luxury island living second to none...

SOLD



4315A PANINI LOOP

3,284 SQFT | 8,188 SQFT LAND | 4BR/3BA | MLS# 201831760
\$3,375,000 | Diamond Head

AWARD WINNER FOR BEST NEW RESIDENCE. Fabulous 4 BR, 3 BA island Home located in one of Hawaii's most coveted neighborhoods was designed by award-winning architectural firm Welch & Weeks. This gracious home portrays a classic vintage Hawaiian style of of yesteryear. It is no wonder this was the 2017 BIA – Hawaii Overall Grand Award Winner for Best New Residence. Stunning...



GLOBAL
LUXURY™

TA
TRACY ALLEN



If you are thinking of Buying or Selling
your home and **RESULTS MATTER**,
CALL TRACY TODAY!

Tracy Allen

Vice President, RA, RS-46610
Global Luxury Ambassador
Luxury Property Specialist
808.593.6415

Tracy@cbpacific.com
www.TracyAllenHawaii.com



1108 AUAHI ST. PH3602

4BR/4.5BA | 2,906 SQFT | MLS# 201830599
\$5,280,000 | Kakaako

Unwind in this rare four bedroom, four and one-half bath penthouse unit in Anaha. The expansive open floor plan with 10-ft high ceilings and spectacular floor-to-ceiling windows showcases panoramic views of the ocean, mountains, and Diamond Head. Each of the unit's four bedrooms has floor-to-ceiling windows and its own private ensuite bathroom. This home feels like a house and features two full-sized wine cellars, Miele appliances, European cabinetry, quartz counters, walk-in closets and a separate laundry room.



1118 ALA MOANA BLVD. PH 3203

2BR/2.5BA | 2,085 SQFT | MLS#201828761
\$4,080,000 | Kakaako

Waiea is a masterpiece. This penthouse features upgrades for the kitchen, countertops, appliances, and stone finish in the master bathroom. This unit has a main entry door with a dedicated foyer and private service entry door in the laundry room. The 10.5-foot ceiling heights boast the grand feeling of a penthouse unit. Stunning Ocean and Sunset views from master suite and living room with a spacious lanai. Storage room is included and conveniently located in parking stalls. Ideally situated between downtown Honolulu and world-renowned Ala Moana Center and Waikiki.



1001 QUEEN STREET #2706

2BR/2BA | 983 SQFT | MLS# 201900763
\$1,498,000 | Kakaako

Rarely available two bedroom, two bath unit at Ae'o, the newest building in Kakaako. Be the first to move in and enjoy breathtaking Diamond Head and ocean views. This floor plan has separated bedrooms, unlike other Ae'o units, which have the bedrooms all on one side. This luxurious unit also includes premium Bosch stainless steel appliances, counter tops, and hardwood floors. Two parking spaces are provided and are conveniently located on the mezzanine level close to the elevator foyer.



Esther H. Park

REALTOR®, Senior Vice President
ABR CHMS CRS GRI SRS, RB-21002
808.489.6733
esther.park@sothebysrealty.com
한국어 서비스 가능



List

Sotheby's
INTERNATIONAL REALTY



SOLD

LATE JIM NABORS' OCEANFRONT ESTATE

Diamond Head | 5BR/6BA

Jim Nabors' Diamond Head Estate SOLD for \$12 million with Trinity Properties' agents Annie Kwock and Bennett Hong representing the buyer. This iconic treasure is one of only a handful of homes on the water at the base of Diamond Head. With 170 linear feet of ocean frontage and two-thirds acre, this 5-bedroom estate with lush gardens and breathtaking views is one of a kind.



SOLD



LANIKAI BEACHFRONT GEM

Lanikai | 7BR/5BA

928 Mokulua in Lanikai SOLD for \$9,888,888 with Trinity Properties' Annie Kwock representing the buyer. This 1930s classic with 5-bedroom main house and 2-bedroom guest cottage sitting on over 18,000 sf is one of only a handful of properties in Lanikai with broad sandy beach and magnificent views of the Mokulua Islands.



Bennett Hong, RA

808.228.5673

bennett@trinityproperties.com



Annie Kwock, R

President and Principal Broker

Office: 808.247.7521

Cell: 808.780.4444

Fax: 808.236.0312

annie@trinityproperties.com

www.trinityproperties.com





1118 ALA MOANA BLVD.
VILLA 4

2,705 SQFT | 3BR/3.5BA | MLS#201828596
\$5,300,000 | Kakaako

Luxurious urban villa at the distinctively elegant Waiea residence. Villa 4 is a two-story, ground floor property with a fully enclosed outdoor space. Residents will delight in their own private pool, barbeque and two-car garage. This premium villa is fully furnished with a modern interior design. High ceilings, expansive sliding-door windows, Miele kitchen appliances, motorized sun shades, spacious walk in closets and an open contemporary floor plan that elevates the high standards of luxe-living. In addition, Villa residents have full access to all Waiea amenities. Indulge in the amenities of this luxury villa. This is one of two villas available.



Judy Whitfield
REALTOR®
VP BIC CRS e-PRO SRS
808.772.2024
jwhitfield@listsir.com



KAANAPALI ALII 1-1006

1,676 SQFT | 2BR/2BA | MLS# 380510 | \$5,200,000 | Kaanapali

Kaanapali Alii 1-1006, is the long-awaited Ocean Front location you have been looking for. Positioned on the 10th floor of the inner courtyard, this very unique residence boasts total unobstructed views of the islands of Lanai and Molokai and is accompanied by year-round sunsets for your personal enjoyment. In addition to the breathtaking views, this residence has been remodeled, tastefully decorated and meticulously maintained. The Kaanapali Alii has been the most sought after, private luxurious condominium on Kaanapali Beach since its beginnings. Come and experience the luxury of Kaanapali beachfront living at its best.



MASTERS 2901

1,516 SQFT | 2BR/2BA | MLS# 381254 | \$1,100,000 | Kaanapali

Experience breathtaking views and year-around sunsets from your personal luxury condominium in the Masters at Kaanapali Hillside. Positioned above the 9th Green and 10th Tee Box of the World famous Kaanapali Royal Golf Course, Masters Unit 2901 is the location you've been waiting for. This spacious corner residence offers a "D" floor plan which features two smartly designed bedrooms and 2 full baths, along with spacious kitchen and dining areas.



Leah Lambros

R(S) Lic. #77914
Cell: 530.906.9180
Toll Free: 866.661.7887
Fax: 808.661.8358
Leah-Whalers@KW.com
www.KaanapaliLuxuryLiving.com



2580 Kekaa Drive Set. 118, Lahaina, HI 96761

Gregory Harbottle Inc. R (PB)

Luxury Property Specialist, Lic. #19615

Cell: 808.385.8059

Toll free: 866.661.7887

Fax: 808.661.8358

ghthkh@msn.com

www.KaanapaliLuxuryLiving.com



ISSUE 14.1

Please Join Us for Issue 14.2
Reservation Deadline: March 15, 2019
Circulation: April/May

ISSUE	DEADLINE	CIRCULATION
14.2	03/15/19	04/17 - 06/11
14.3	05/03/19	06/12 - 08/13
14.4	07/10/19	08/14 - 10/15
14.5	09/06/19	10/16 - 12/17
14.6	11/08/19	12/18 - 02/28

CONTENTS



* Founding or Prestigious Member

THE ISLAND OF MAUI

Dennis Rush	Front Cover, 30-31
Martha Rush	Front Cover, 30-31
Gregory Harbottle Inc.*	9
Leah Lambros	9
Robert H. 'Robbie' Dein*	11
Kenneth M. 'Ken' Hayo*	11
Honua Kai	12
Montage Residences Kapalua Bay	26-27
Robert R. Myers*	32-33
Kapalua Realty	48
Diane K. Pool*	49
Better Homes and Gardens Real Estate	50
Jolanta Frazier	51
David W. Richardson	54-55
Josh Jerman	55-57
Matt Beall	57
Mary Anne Fitch*	58
Nam L. Le Viet*	58
Raymond S.F Chin*	59
The Hansen Ohana Real Estate Group*	60-61

THE ISLAND OF OAHU

John "Jack" Tyrrell*	2-3
May Lew Tyrrell*	2-3
Marti Hazzard*	4
Samantha Castanera-Ahn	4
Tracy Allen*	5
Esther H. Park	6
Annie Kwock*	7
Bennett Hong	7
Judy Whitfield	8
Sachi Braden*	18-19
Patricia Choi	22-23
Victoria NV Gutierrez	22-23
Orion Barels	24
Jason Carey	34
Jeffrey M. Fox	35
Marsha L. Forsythe	35
Gretchen Booma	36
Alesia Barnes	37
Julia Napua Fetzter	53
Kyle Bernhardt	53
John Climaldi	53

THE BIG ISLAND

Yvonne Khouri-Morgan*	13
Joni J. Metzler	15
Eileen Lacerte*	16
Renée H. Kraft	17
Kohanaiki	20-21
Kelly Shaw	38
Linda Williams	39
Donna Duryea	40-41
Meg Saunders	40
Brent Wenner	41
Karen Ferrara	42
Phil Fukushima	43
Brian Axelrod	43
Patti Kam	44
Annie M. Howes	44
Rebecca Keliioomalulu*	45
Annie Mendoza	46
Margery Mayo*	63
Tomoko Matsumoto*	64-67
Hapuna Beach Residences	66-67

BUSINESS PARTNERS

Padilla Designs, LLC*	47
Title Guaranty	52, Back Cover
Wells Fargo Home Mortgage*	62

THE ISLAND OF KAUAI

Lynda Gill	25
Robin Savage-Thompson	28

THE ISLAND OF LANAI

Joni J. Metzler	14
-----------------	----



The first months of the year are always brimming with potential. You might be excited about developing new habits, streamlining your storage (hello, Marie Kondo), or maybe even looking for a new place to call home. If your 2019 goals include finding a home with all the amenities for entertaining, you're in luck. Your search stops here with this issue's front cover home. Presented by Dennis and Martha, Paradise 808 Maui lives up to its name. This two-acre sanctuary features 12,300 square feet under-roof and is fully furnished. Although it is a private, gated residence, it is only a three-minute drive to South Maui's golden beaches. Turn to pages 30 & 31 for more information on one-of-a-kind, resort-style home.

Mahalo,
Maresa Giovannini
Maresa Giovannini
Editor in Chief

Aloha from
Maresa

Say Aloha! Send editorial & advertising inquiries to info@lhmhi.com



LUXURY HOME MAGAZINE
6800 Kalaniana'ole Hwy., Suite 104
Honolulu, HI 96825
Phone: 866.853.2474 • Fax: 866.845.3457

FOR ADVERTISING
INFORMATION VISIT:

info@lhmhi.com

The most comprehensive and targeted distribution in the area, bar none!

SUNSHINE PUBLICATIONS, INC.
1020 Suncastr Lane, Suite 104
El Dorado Hills, CA 95762

Phone: (916) 458-6010
Fax: (916) 404-8867
info@luxuryhomemagazine.com

LuxuryHomeMagazine.com

Visit Our Blog:
LuxuryHomeMagazine.com/blog

Chief Executive Officer
Brad Taylor | brad@lhmmediagroup.com

Chief Financial Officer
Cathy Taylor | cathy@lhmmediagroup.com

Publishing Opportunities
publishing@lhmmediagroup.com

Published six times per year
©2019 Sunshine Publications, Inc.

Luxury Home Magazine®, Luxury Living and Lifestyle™ and LuxuryHomeMagazine.com are protected trademarks of Sunshine Publications, Inc. and LHM Media Group. Publisher is an authorized independent distributor and licensee for a market specific area of Luxury Home Magazine®, Luxury Living and Lifestyle™ and LuxuryHomeMagazine.com. Publisher is licensed through Sunshine Publications, Inc. and LHM Media Group. Sunshine Publications, Inc. and LHM Media Group are not responsible for the contents of the magazine or the acts or omissions of the publisher or its representatives and makes no representations or guarantees. Reproduction in whole or in part (including materials, photos and formats) in any form without written permission from Sunshine Publications, Inc. and LHM Media Group is prohibited. All submissions become the property of Sunshine Publications, Inc. and LHM Media Group and may be used in any print, digital, social and online media. All rights reserved.

The information contained in *Luxury Home Magazine*® is deemed reliable, but not guaranteed. Contact each individual agent to verify information, which is subject to change.

Made and Printed in the USA.



WAILEA GOLF ESTATES PANORAMIC OCEAN VIEWS

15,919 SQFT LAND | 3BR/3BA | MLS# 380512
\$4,925,000 | Wailea

Enjoy expansive ocean views across the Islands of Kaho'olawe, Molokini, Lanai and the West Maui Mountains from the apex of the hill adjacent to the 17th fairway of the Wailea Blue Course. Painterly year-round Spectacular Sunsets remind us of nature's gifts! Private and serene, this residence has been consciously renovated and maintained. Walls were re-positioned to bring harmony and balance; creating that exquisite, indoor/outdoor, Maui lifestyle. Open beam, vaulted ceilings enhance the quiet spacious feeling. **Waakaula.info**

OCEANFRONT SEAMLESS INDOOR/OUTDOOR LIVING

2,360 SQFT | 9,401 SQFT LAND | 4BR/3BA
MLS# 379963 | \$3,995,000 | Kihei

There are natural slate stone floors, light-filled windows in every direction, sliding glass walls that disappear & create that seamless indoor/outdoor Maui living experience. The kitchen has stainless steel appliances with white porcelain tiled counters. The living, dining, & kitchen area mesh seamlessly with the open pool lanai overlooking stunning ocean vistas. The master suite, with its private spacious lanai, enjoys panoramic views from Kahoolawe & Molokini, across the Island of Lanai, Maalaea Bay & the West Maui Mountains. **Halama1688.info**



EXQUISITE PASTORAL 'PEACE OF PARADISE'

3,685 SQFT | 2 AC | 3BR/3BA | MLS# 380681
\$3,250,000 | Ulupalakua

Enjoy ocean & outer island views across the South Maui coast! Relax on the wrap around lanai, or by the resort scale pool & deck. Hardwood floors with Mahogany accents, stainless steel appliances, granite counters, and a custom barrel-vaulted cedar ceiling speak to the level of detail in this home. There are 2 additional bedrooms on the main level, a large bonus room & 3 additional sleeping areas plus a dry sauna on the lower level. The 1600 ft elevation is perfect for the many avocado & fruit trees. **Kini515.info**



Kenneth M. "Ken" Hayo

PRINCIPAL BROKER-OWNER | RB15529

Direct: 808.283.8435

Ken@MauiRealEstateAdvisors.com



Maui's Top Producing Agent - We Closed Almost \$70 Million in 2017
Year after Year... Ranked Amongst Top 5 Maui Realtors - Top 100 Hawaii Realtor Hall of Fame Hawaii Business Journal 2006-2018
50+ years of Successfully Representing Buyer & Seller Maui Real Estate Transactions Totaling Over \$625,000,000
Search All Maui Properties at www.MauiRealEstateAdvisors.com

Robert H. "Robbie" Dein

BROKER-OWNER, ABR, CRS, RSPS | RB18398

Direct: 808.250.3564

Robbie@MauiRealEstateAdvisors.com



NOW SELLING

FINAL
PHASE

LUANA

GARDEN VILLAS

A RARE CHANCE TO CREATE A NEW FAMILY LEGACY IN WEST MAUI

Imagine a home spacious enough to bring your entire family together. Luana Garden Villas is the last opportunity to own a new whole-ownership home at Honua Kai Resort and Spa, just steps from West Maui's famed Ka'anapali beach, and with direct access to Duke's Beach Bar, Ho'ola Spa and 38 acres of resort amenities.

Luana is a collection of three-bedroom villas with over 2,000 sq.ft of open-concept, single level interior living space, huge lanais, outdoor kitchens and private garages.

Each villa is nestled within one of three intimate garden enclaves, each with its own pool, hot tub and fire pit. Truly a resort within a resort.



Presentation Center Open Daily
Honua Kai Resort & Spa,
130 Kai Malina Parkway, Lahaina

LuanaGardenVillas.com
808.740.0650

Priced from
around \$2 Million



MAUNA LANI TERRACE A 303

1,941 SQFT | 3BR/3BA | MLS# 623718
\$3,379,000 | Kohala Coast

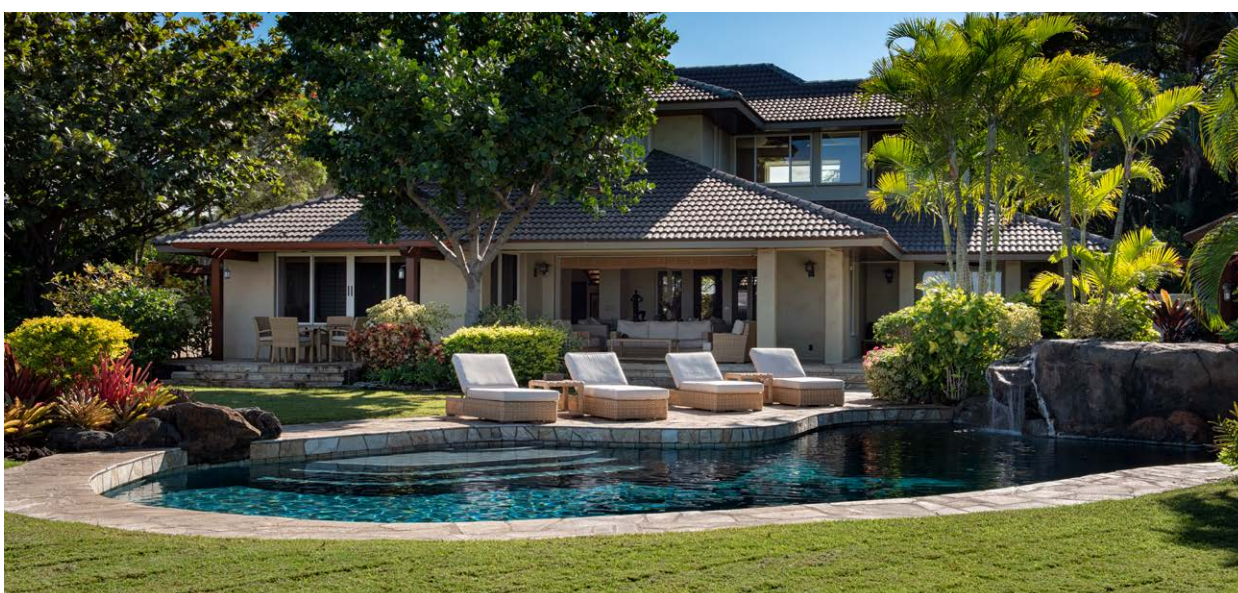
Rare and spectacular oceanfront penthouse with the best ocean views in all Mauna Lani Terrace. Recently renovated with stone floors, new lighting, new kitchen, new bathrooms, new appliances, new wet bar on lanai, new ceiling treatments, built-in desk area and 180 degree views of the ocean, fish ponds, white sand beach. Vaulted ceilings and mahogany shutters for dramatic effect. Every room has a private lanai and amazing ocean and sunset views. A private ELEVATOR completes this one-of-a kind villa.



72-127 PU'U KOLE STREET

4,477 SQFT | 5BR/6.5BA | MLS# 624430
\$6,980,000 | Kohala Coast

Spacious, extremely private residence with an estate feel, located overlooking the member's only Keolu 12th fairway with panoramic views of the golf course and views to the ocean. Located at the end of a quiet cul-de-sac, beautifully furnished with five spacious bedroom suites all with garden showers and a separate Ohana with an office, easily converted to a sixth bedroom suite. Manicured lawns and lush tropical gardens, a private entry gate with waterfall, pocket doors in the great room and master bedroom open onto deep lanais and out to the infinity pool, spa, and BBQ area.



BLACK SAND BEACH LOT 29

4,827 SQFT | 5BR/5.2BA | MLS# 624390
\$6,850,000 | Kohala Coast

Overlooking the blue Pacific Ocean and the #12 South fairway. Masterfully designed to showcase spectacular panoramic ocean, fairway and mountain views from nearly every room. Gourmet kitchen with large island was designed for cooking as well as entertaining. The living room opens seamlessly to the rear lanai, large fully landscaped and manicured yard with BBQ, pool, waterfall, spa and expansive ocean views. The 3-car garage can accommodate a boat. Constructed with the highest quality materials, this spacious home offers Hawaii living at its best.



MAUNA LANI REALTY

Live the Aloha Hawai'i Life

Yvonne Khouri-Morgan

RB, Principal Broker
Luxury Kohala Coast Resorts
808.937.4466

Yvonne@alohalife.net
www.HawaiiResortLuxuryHomes.com
www.maunalanirealty.com





11 LAPA IKI PLACE
2.07 AC | MLS# 623034 | \$2,500,000 | Lanai

This Estate parcel with over 2 acres located at the corner of Challenge Drive and Lapa Iki Place at Manele provides captivating golf course and ocean views. Island Club Membership is available exclusively to Residents and provides members use of the Manele Golf Course, the Tennis Club, the Fitness Facility and the beach and swimming facilities at the Four Seasons Resort Manele Lanai.



Joni J. Metzler
(R) B
Metzler Realty
808.640.6832
Joni@MetzlerRealty.com
www.MetzlerRealty.com





LOT 55 AT KOHANAIKI

0.91 AC | MLS# 620168 | \$5,500,000 | Kohanaiki

Lot 55, situated at Kohanaiki, offers stunning views of Puhili Point and the Pacific Ocean. Kohanaiki is situated on roughly 450 acres of land with over a mile and a half of beach fronting one of Hawaii’s most productive sport fishing grounds, affectionately known as ‘Ono Lane’, and the Big Island’s finest surfing beach. The Kohanaiki Club is a private equity club and membership is by invitation only to Kohanaiki Property Owners.



Joni J. Metzler
(R) B
Metzler Realty
808.640.6832
Joni@MetzlerRealty.com
www.MetzlerRealty.com





PAUOA BEACH AT MAUNA LANI

2,700 SQFT | 3BR/3.5BA | MLS# 617378 | \$3,950,000 | Mauna Lani Resort

Gated oceanfront community between Mauna Lani Bay Hotel and the Fairmont Orchid. Fabulous oceanfront beach club with work out facilities! This home is the much-desired “Pod-style” living centered around lush landscaping and pool and spa. The interior has been totally upgraded. Words just won’t do this beach home justice. Please take your own personal 3D tour for best view <http://bit.ly/pauoa7>



THE BLUFFS AT MAUNA KEA RESORT

8,094 SQFT | 5BR/5.5BA | MLS# 611774 | \$8,995,000 | Mauna Kea Resort

The Bluffs at Mauna Kea Resort is located between the Mauna Kea Beach Hotel and the Westin Hapuna Beach Hotel. Steps from both beachfront clubs. Amenities abound from the two golf courses to the oceanfront tennis courts. Beaches, tennis courts, golf courses...and a fantastic house also? Billiards room, Bar, Library, Office, and Gym! Want more? There is a two bedroom fully contained guest suite. To see this in 3D and Drone video see this link: <http://bit.ly/Bluffs15>



ISLANDS AT MAUNA LANI RESORT A2

2,610 SQFT | 3BR/3.5BA | MLS# 616336 | \$1,195,000 | Mauna Lani Resort

Walk to the beach! Walk to the spa! Walk to the restaurants and The Shops at Mauna Lani! This is the large 3-bedroom model. This was the original Model home! Recently refurbished/decorated by Henderson’s! Not here on the Big Island? Take a 3D tour from your own home! <http://bit.ly/IslandsA2>



KAUNAOA AT MAUNA KEA RESORT 5B

3,577 SQFT | 4BR/4.5BA | MLS# 612352 | \$3,500,000 | Mauna Kea Resort

The largest townhome at the best location! View, golf course, and ocean! Walk to white sand beaches or private par-3 practice course, pool, spa, or exercise and massage pavilion. Homeowners are invited to join the Mauna Kea Club which offers two world-class golf courses, two beach clubs, access to shops and dining at the Mauna Kea Beach Hotel and the Westin Hapuna Beach Hotel. Carefree living at its best! 3D and Drone video: <http://bit.ly/KaunaoaHBGP>



Eileen Lacerte
REALTOR® Broker/Co-Owner
808.989.1862
Eileen@EileenLacerte.com
www.EileenLacerte.com





BEST OF KONA HILLS ESTATES

3,601 SQFT | 1 AC | 4BR/4BA
MLS# 621968 | \$1,555,000
Kailua-Kona

Perfectly situated for impressive panoramic ocean views and spectacular sunsets. Ambiance captivating, impeccable style and accents, home furnishings included in the sale. Main floor features great room with 2 living areas and fireplace, spacious kitchen, dining, office, bedrooms. 2nd floor private master suite with vaulted ceilings and lanai. Luxurious pool deck with covered lanai, dining, and fire pit surround the custom pool. Two-car tiled floor garage plus additional bay. Landscaped oasis with fruit trees and great lawn. This home radiates warmth of a true Hawaiian estate for use as a private retreat or a personal residence for family and entertaining.



Renée H. Kraft

Realtor RS-51893

Hawaii Beach and Golf Properties

Mobile: 808.345.2108

Email: renee@SearchHawaiiProperty.com

www.HawaiiBeachGolf.com





DIAMOND HEAD & OCEAN VISTAS

2BR/2.5BA | 1,854 SQFT
MLS# 201829429 | \$3,280,000
Honolulu

Unrivaled Prestige & Ultra-Luxe Lifestyle in Kakaako's renowned Waiea condominium. World-class vistas of Oahu's southern sandy coastlines, boat harbors, green parks, & iconic Diamond Head captivate throughout. Sold with designer furnishings, this 2 bedroom, 2.5 bath unit includes all fine finishes & appointments; a Chef's Kitchen, Master & Guest Bedrooms with en-suite resort-style baths, granite-glad powder room, designer lighting, artwork, furniture & more. The most convenient upscale neighborhood in Honolulu with a flagship Whole Foods, Ward Village, South Shore Market all nearby, with Ala Moana Beach Park directly across the street. Welcome home to Paradise, Found.



Sachi Braden

CEO, Founder, & Principal Broker | RB-16308
808.596.8801
info@sachihawaii.com
www.sachihawaii.com

ハワイの不動産売買、別荘管理、賃貸管理に関するお問合せは日本語でどうぞ



WAIEA #1203



FOREVER KEWALO BASIN OCEAN VIEWS

1BR/2BA | 1,139 SQFT
MLS# 201829982 | \$1,889,000
Honolulu

This is the lowest priced unit in the building!

Developed alongside Architectural Digest's award-winning Ward Village, this community features an array of fine-dining, shopping, & entertainment. Stunning Ocean, Harbor, & sunset vistas captivate throughout this mastercrafted retreat. High-end finishes throughout a Chef's Kitchen laden with Miele appliances, Ocean view en-suite with resort-style master bath, upgraded lighting & more. Nearby sits Whole Foods, local boutique shops, & eateries throughout South Shore Market & Ward Village, all anchored by Ala Moana's sandy beach shoreline directly across the street. The ultimate lifestyle of luxury for discerning buyers.



Sachi Braden
CEO, Founder, & Principal Broker | RB-16308
808.596.8801
info@sachihawaii.com
www.sachihawaii.com



ハワイの不動産売買、別荘管理、賃貸管理に関するお問合せは日本語どうぞ

YOUR SANCTUARY ON THE KONA COAST



HOME HAPPENS HERE.

Nestled on the idyllic Kona coastline of Hawai'i Island, the exclusive community of Kohanaiki features a 67,000 sq.ft. private clubhouse & spa, intimate beach club, organic community farm and gourmet dining, all within 450 acres of oceanfront luxury estates. The distinguished 'Alani Residences are a collection of three and four bedroom turn-key homes along the 7th and 8th fairway of the Rees Jones 18-hole championship golf course. Designed by renowned architectural firm Glazier Le, these homes showcase the natural beauty of the Big Island with seamless indoor-outdoor living spaces, as well as stunning views of the Kona Coast, nearby mountain ranges and striking sunsets. **From \$2.5 Million.**

Access to and use of the golf course and other private amenities at Kohanaiki Club is available only to members of the Kohanaiki Club and are subject to the payment of additional fees. Membership to the Kohanaiki Club is by invitation only and is not included with a purchase of a property. No representation or warranty is made regarding whether a purchaser will qualify for such membership. Obtain the Property Report or its equivalent required by Federal and State law and read it before signing anything. No federal or state agency has judged the merits or value, if any, of the property shown in this brochure. WARNING: THE CALIFORNIA DEPARTMENT OF REAL ESTATE HAS NOT INSPECTED, EXAMINED, OR QUALIFIED THIS OFFERING.





KOHANAIKI

Call for your private tour
(888) 406-1256 | kohanaiki.com/alani

BRAND NEW

DIAMOND HEAD



New Diamond Head Oceanview Luxury Custom Home to be built by Honolulu's leading custom builder, Pyramid Premier Properties. This 4 bedroom home will feature 2 master suites, 5 full baths, and 2 half baths. East facing ocean views from virtually every room with an infinity spa and large pool. Completion 2020. Call for pricing. www.506hakaka.com



Pyramid Premier Properties | JTG LLC

4614 Kilauea Avenue, Suite 205

Honolulu, HI 96816

808-734-1683

www.PyramidHawaii.com

OCEANVIEW | LUXURY CUSTOM HOME



Patricia Choi
R, RB-11824
Direct: 808-285-2484
Office: 808-734-7711
PatChoi@HawaiiLife.com
Choi.HawaiiLife.com



Victoria NV Gutierrez
RA, RS-75646
Direct: 808-679-1678
Office: 808-734-7711
VictoriaGutierrez@HawaiiLife.com

THE
CHOI
GROUP



HAWAII LIFE
REAL ESTATE BROKERS

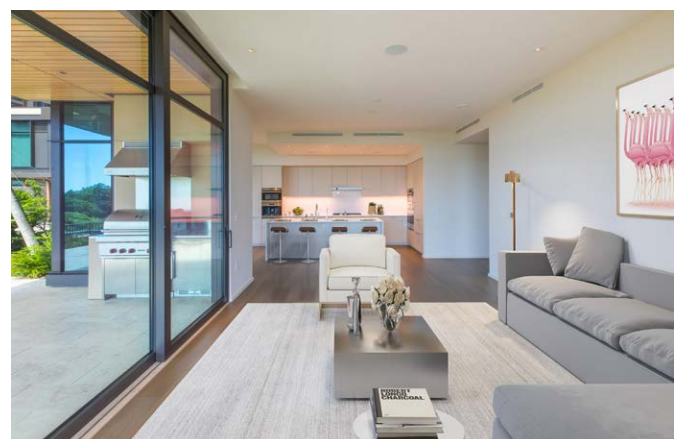
CHRISTIE'S
INTERNATIONAL REAL ESTATE



PARK LANE #5301

2,114 SQFT | 3BR/3BA
MLS# 201828977 | \$5,495,000
Honolulu

An exquisite level of elegance in the heart of Honolulu, Park Lane is considered the pinnacle of luxury living on Oahu. This brand new 3 bedroom/3 bathroom unit has never been lived in, offering a beautiful blank canvas of over 2,500 Sq.Ft. of living area to create your very own masterpiece. One of the rare floorplans with a private in-ground style Hot Tub for unwinding. Steps away from a private elevator to the Ala Moana Shopping center and Beach Park, yet in a unique low density layout, Park Lane is truly in a league of its own: Top resort-like amenities, meticulously landscaped private grounds, unparalleled security, owner privacy, and 24 hr residential services elevate the brand above all other Honolulu Luxury.



Orion Barels

Realtor Associate
BS Economics
808.228.7195
www.CoastalOahu.com
orion@coastaloahu.com





HALE MALIE (TRANQUIL HOME)

2,680 SQFT | 2.6 AC | 4BR/4.5BA
MLS# 616808 | \$4,250,000
Poipu Beach

Hale Malie is a newly constructed estate with a total of 3,473 combined square feet of indoor/outdoor country living only minutes away from the lively attractions of Poipu. The home is comprised of three interlocking sections wrapping around an outdoor pool and open-air dining & grill area. A detached 1,008 sq.ft. 4 car garage is only steps away. Plans for an accessory 1 bedroom/1 bath building are available and utilities for the yet to be built structure are already installed. Temporary vacation rentals are not allowed in Poipu Aina Estates ensuring privacy and quiet in perpetuity. To access this home's Virtual Tour, Meet The Builder Video: www.PoipuAinaLiving.com



2015, 2017 & 2018
Top 100 Agents Most Transactions State of Hawaii

Lynda Gill
CRS, RS-63088

Lynda@LyndaGill.com

Mobile 808.346.0056

Website: www.LyndaGill.com





M **MONTAGE
RESIDENCES**

BEVERLY HILLS | DEER VALLEY | KAPALUA BAY | LAGUNA BEACH | LOS CABOS
PALMETTO BLUFF | HEALDSBURG (Opening in 2020) | BIG SKY (Opening in 2021)



Montage Residences Kapalua Bay is exclusively listed by PowerPlay Destination Properties (Hawaii), Inc. RB20039

This does not constitute an offer to sell or a solicitation of an offer to buy a unit. Nor is it an offering or solicitation of sale in any jurisdiction where the development is not registered in accordance with applicable law or where such offering or solicitation would otherwise be prohibited by law. Obtain all disclosure documents required by applicable laws and read them carefully. The resort project described herein (the "Project") and the residential units located within the Project (the "Residential Units") are not owned, developed, or sold by Montage Hotels & Resorts, LLC, its affiliates or their respective licensors (collectively, "Montage") and Montage does not use the Montage brand name and certain Montage trademarks (collectively, the "Operator Trademarks") in connection with the sales and marketing of the Residential Units in the Project under a limited, non-exclusive, non-transferable and non-sublicensable license from Montage. The foregoing license may be terminated or may expire without renewal, in which case the Project and the Residential Units may be operated by a different operator.



M
MONTAGE
RESIDENCES
KAPALUA BAY

THE SPIRIT OF HAWAII *Lives at Montage.*

This beloved place, a natural paradise of stunning beaches and turquoise seas awaits with unending resort pleasures and memorable experiences. A setting of balance and harmony allowing you to savor warm hospitality, personalized service, and the celebrated Montage lifestyle. Here is your Maui dream home in a perfect seaside locale. A collection of fully-furnished residences that represent the final offering at Montage Kapalua Bay.

*Starting from under \$3 million.
Schedule your private showing.*

(808) 662-6551
MontageResidencesKapaluaBay.com
ONE BAY DRIVE, LAHAINA, HI 96761

PRIVATE
NORTHSHORE
OASIS KAUAI

3,879 SQFT | 3.58 AC | 3BR/4.5BA
MLS# 616061 | \$3,300,000 | Kilauea

Located on Kaua'i's iconic North Shore, this estate lives harmoniously with the island's raw, natural beauty. Outdoor elements seamlessly blend into exclusive interior designer features, creating a serene ambiance. Distinctive architectural elements, including six rooftop cupolas and an indoor/outdoor koi pond defining the front entry. Calming sounds of the water are balanced by striking views from every room. Natural light fills every space in this home. This private oasis awaits you.



Robin Savage-Thompson

RS – 78815
808.639.9640
Robin.Savage@oceanfrontsir.com
RobinSavage.oceanfrontsir.com

Oceanfront | Sotheby's
INTERNATIONAL REALTY



THE LOWEST PRICED UNIT IN WAIEA
SEE PAGE 19

Luxury is an Experience



elitepacific.com

Brokerage • Vacation Rentals • Property Management • Estate Management
Oahu • Maui • Big Island • Kauai



COVER HOME

PARADISE 808 MAUI



First time EVER on market! Truly your own EDEN! You will be amazed entering through two separate automatic gates into this 2-acre sanctuary featuring 12,300 sf under-roof fully furnished resort-style residence with panoramic ocean, sunset & sunrise views conveniently located at 650' elevation with cool tropical breeze ONLY 3-minute drive to South Maui golden beaches, Wailea Resorts, The Shops at Wailea, golf & tennis. Amenities include 6-bedroom suites, 9-bathrooms, professional





chef's kitchen, 9-zone central A/C, 4-car oversized garage also with A/C, state-of-the-art security infrared cameras, tropical landscaping, 4-hole putting green, 2-sand traps, 3-heated pools, 12-seat pool cabana bar, waterfalls, waterslide, spa, ponds, river all with 21-day back-up auxiliary system & 12k gallon underground potable water tank. 8-years to plan & build completed 2008! The attention to detail is incredible! This one-of-a-kind luxury 2-acre estate is being offered @ \$22,808,000.

Dennis & Martha
DENNIS RUSH MARTHA RUSH

Maui Luxury Real Estate Brokers | RB-16109 | RB-19743
280.0788 | Se Habla Español y Italiano
Dennis@DennisRush.com
www.DennisRush.com



ELITE
PACIFIC PROPERTIES

Luxury Service with Aloha Spirit



304 S KAINOE ST



A spacious and highly remodeled home located in sought-after Kaanapali Hillside with Ocean and Island Views. Open floor plan, MAUI
totally private poolside oasis with outdoor shower and media room that seats eight with a full wet bar. 5BR/5.5BA | MLS# 378830 KAA NAPALI

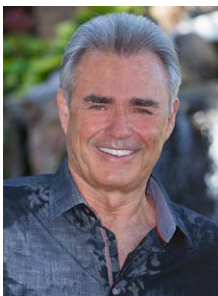
326 KAINOE ST



Enter this high-end, custom, steel-framed home through wooden Balinese doors. The great room looks out to the private, tropically-landscaped MAUI
backyard with heated pool, spa, built-in barbecue, and indoor/outdoor swim-up bar perfect for entertaining. 4BR/3BA | MLS# 377560 KAA NAPALI

LuxuryHomeMagazine.com

ELITE
PACIFIC PROPERTIES
Luxury Service with Aloha Spirit
LUXURY
REAL ESTATE



Robert R. Myers
REALTOR (S), SRS
Cell: 808.283.3067 | Toll-Free: 888.781.3548
Robert@mauihomesales.com
www.mauihomesales.com



85 LAU AWA PLACE

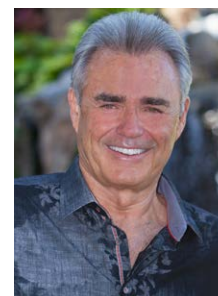


This tropical estate, 4BR/4BA main house and 2BR/1BA Ohana complete with a full kitchen, is located on a very private 5.9-acre parcel in the Makila Plantation phase of Launiupoko. Views of sunsets, whales & the West Maui Mountains complete your home in paradise. MLS #380502

MAUI
LAHAINA

For all the Maui listings check out my website:
www.MauiHomeSales.com
Including Interactive Maps of Kaanapali, Kapalua and Wailea

Robert R. Myers
REALTOR (S), SRS
Cell: 808.283.3067 | Toll-Free: 888.781.3548
Robert@mauihomesales.com
www.mauihomesales.com



ELITE
PACIFIC PROPERTIES

Luxury Service with Aloha Spirit



LuxuryHomeMagazine.com

ICONIC BEACHFRONT ESTATE IN MOKULEIA



68-011 Laau Paina Pl. Amazing 5 Bed 6 Bath luxury beachfront estate located in Mokuleia. **OAHU**
Spacious and open floor plan with stunning ocean and mountain views throughout. Listed at \$3,250,000 **MOKULEIA**



Jason Carey
RS-76292
808.679.1698
jason@elitepacific.com

ELEGANT OCEANFRONT RETREAT



Come home to your elegant oceanfront retreat at the Tahitienne on the Gold Coast! Exquisitely renovated by the current owners, you'll love the quality craftsmanship and materials featured in this home. MLS# 201900735 | \$1,880,000

OAHU
DIAMOND HEAD



Marsha L. Forsythe
Realtor-Associate
Elite Pacific Properties
RS-66449
808.282.8026
Marsha.Forsythe@ElitePacific.com

Jeffrey M. Fox
(R) CLHMS, CRB, CRS
Elite Pacific Properties
RB-17230
808.292.5333
Jeffrey.Fox@ElitePacific.com



ELITE
PACIFIC PROPERTIES
Luxury Service with Aloha Spirit


LuxuryHomeMagazine.com

CONTEMPORARY ISLAND LUXURY



Just steps from the white sands of Kahala Beach, this gorgeous home offers the perfect balance of laid-back island style and contemporary flair. Five bedrooms, wet-edge pool, lush landscaping, gated courtyard with tranquil pond and waterfall, all on an oversized lot. **OAHU KAHALA**
\$5,800,000.



Gretchen Booma
RA
808.469.7292
Gretchen@ElitePacific.com
www.GretchenBooma.com

1508 MOKULUA DRIVE, LANIKAI



Magnificence on Mokulua! As the gate opens luxury prevails...fountains, circular driveway and an entrance fit for a King. This 27,000 square foot lot includes 76 linear feet of beachfront with a private staircase and guest home. Offered at \$7,450,000

OAHU
KAILUA




Barnes Hawaii
Real Estate Group

Alesia Barnes
Realtor-Broker, CRS
RB-22312
808.397.7928
Alesia@BarnesHawaii.com
www.BarnesHawaii.com




ELITE
PACIFIC PROPERTIES
Luxury Service with Aloha Spirit




Enjoy expansive coastline & ocean views from nearly every room of this meticulously updated 3,000+ sq. foot home. **BIG ISLAND**
Set on over an acre of lush, manicured grounds. Secluded & private, yet close to town and beaches. **\$1,050,000 KAILUA KONA**



Kelly Shaw
RB-21516
ABR, e-Pro, CRS, GRI, CLHMS
808.960.4636
Kelly.Shaw@ElitePacific.com
www.elitepacific.com/agent/kelly-shaw/

NEW BAYVIEW ESTATES



Stunning New Coastal-Contemporary luxury home offers spectacular panoramic ocean, sunset views. Gated community, high-end quality construction, open-concept great room, private infinity-edge pool & large covered lanai. 4BR | 3BA | 3,000+ sq.ft. | MLS #620312 | \$1,859,000

BIG ISLAND
KAILUA-KONA

HUALALAI COLONY



Lucky Bennett-designed home in the highly desirable luxury community of Hualalai Colony. Situated on a private .70 acre with stunning ocean to sunset views, pool, and tropical gardens. 4BR/2.5BA | 4,775 SQFT under roof | 3,196 SQFT interior | MLS #623778 | \$1,389,000

BIG ISLAND
KAILUA-KONA

Linda Williams

RS-63970

Cell: 808.640.1579

Linda.Williams@ElitePacific.com

BigIslandRealEstateSales.com | ElitePacific.com



ELITE
PACIFIC PROPERTIES

Luxury Service with Aloha Spirit



LuxuryHomeMagazine.com

REED'S ISLAND



Reed's Island, a hidden jewel of Hawaii's Big Island. This legacy property has been artfully brought up to date with superior quality improvements including a resort quality pool, spa and waterfall. \$987,000 | MLS 623905

BIG ISLAND
HILO



Donna Duryea
R(S) 62459, CRS, GRI, ABR
808.987.4511
Donna@DonnaDuryea.com
DonnaDuryea.com

Listed By
The Duryea Group



Meg Saunders
R(B) 19200
808.895.3147
Meg@ElitePacific.com
Meg.Hawaii.ElitePacific.com



LUXURY BAMBOO B&B



Luxury Bamboo 4 Bedroom Bed & Breakfast, Private Residence, or Multi-Family. MLS 624672 **BIG ISLAND MOUNTAIN VIEW**

30+ OCEANFRONT ACRES



30+ Acres on the Hamakua Coast with over 1/2 mile of Coastline. MLS 623040 **BIG ISLAND HAKALAU**



Brent Wenner

R(S) 80526

808.430.5522

brent.wenner@elitepacific.com

www.BrentWenner.com

Donna Duryea

R(S) 62459, CRS, GRI, ABR

808.987.4511

Donna@DonnaDuryea.com

DonnaDuryea.com



Listed By
The Duryea Group



ELITE
PACIFIC PROPERTIES

Luxury Service with Aloha Spirit



LuxuryHomeMagazine.com

72-1197 MAKALEI DRIVE



Expansive Ocean Views from this immaculate Private and Gated home on 3 acres in Makalei Estates. **BIG ISLAND**
This gracious, turn-key furnished home is King of the Hill. 4BR/4BA | 3,410 SQFT | \$1,559,000 | MLS# 623107 **KAILUA-KONA**

COMING SOON IN
ANEKONA ESTATES



BIG ISLAND - WAIMEA

THE BEST OF THE BEST
IN WAIMEA PARKSIDE!

CONTINGENT



BIG ISLAND - WAIMEA

This immaculate home is walking distance to Waimea's best schools, award-winning restaurants, farmers' markets, and The Kahilu Theatre – Waimea living at its finest. \$1,049,000



Karen Ferrara
MBA, REALTOR, RS-72752
karen.ferrara@elitepacific.com
808.883.0094
karen-ferrara.com

PERFECT HOKULI'A MASTERPIECE



This rare custom home features 180-degree panoramic ocean/golf course views. 5,053 sq.ft. of interior space with 4 bedrooms, 4.5 baths. **BIG ISLAND**
2,300 sq.ft. of exterior lanais. Enjoy Hawaii's ideal climate, outdoor lifestyle, and stunning daily sunsets. **HOKULI'A**



VIEWS, VIEWS, VIEWS.
HOKULIA AT IT'S BEST.

BIG ISLAND - HOKULI'A

This new custom home in the private and exclusive community of Hokuli'a features 180-degree panoramic ocean, shoreline, sunset & golf course views from nearly every room. The open floor plan is perfect for enjoying Hawaii's ideal climate & indoor-outdoor lifestyle.



Brian Axelrod

RS-77132
808.443.7767
brianaxelrod@elitepacific.com
www.brianaxelrod.com



KEAUHOU ESTATES FRONT ROW

BIG ISLAND - KEAUHOU

Showstopping home on the front row of Keauhou Estates. 4 bedrooms, 3.5 baths and 4,039 sq.ft. of interior space. Stunning ocean and sunset views. Great for outdoor entertaining.



Philip Fukushima

Broker/Salesperson RB-18811
808.989.3200
Philip@elitepacific.com
Philip.AllBigislandProperty.com

ELITE
PACIFIC PROPERTIES

Luxury Service with Aloha Spirit



ALI'I HEIGHTS – PANORAMIC OCEAN VIEWS



Spectacular sweeping views from Keahou Bay to Kailua-Kona Coast. This single-level home on an oversize lot is rarely available in upscale Ali'i Heights. Photovoltaic, large lanai, 3-car garage, and NO HOA dues. 3BR/2BA | MLS# 619400 | \$959,000 Listed by Annie M. Howes

BIG ISLAND
KAILUA-KONA

78-6641 ALII DRIVE - KAHALU'U BEACH LOTS



Ideally located across the street from the ocean in a historical surfing community. Asian and midcentury-inspired home by Lucky Bennett with rooms that open to lanais, courtyards, pool, and ponds. 3BR/2.5BA Main | 1BR/1BA Guest | MLS# 624363 Listed by Patti Kam

BIG ISLAND
KAILUA-KONA



Patti Kam
R(S), RS-64016
808.960.3198
Patti@PattiKam.com
www.PattiKam.com

Annie M. Howes
R(S)-67492
808.937.6256
Annie.Howes@ElitePacific.com
AnnieHowes.hawaii.elitepacific.com



RARE RIM LOT; VIEWS OF PUU WAAWAA



On the Rim of Puu Lani Ranch with full on views of the magnificent natural landmark, Puu Waawaa, this home has been completely remodeled to the highest level of quality. 3,375 SQFT | 1.11 AC | 3BR/3BA | MLS# 622363 | \$1,850,000

BIG ISLAND
PUU LANI RANCH

MAUNA KEA BEACH NORTH



A true steal—the least expensive 3BR/3 Full/2 Half BA in the premier Mauna Kea Beach Resort Fairways North. With views from Kailua Kona to Maui, this home sits on an elevated lot and has a full photovoltaic system for lower utility costs. MLS# 622538 | \$2,895,000

BIG ISLAND
MAUNA KEA



THE REBECCA K. COLLECTION

Elite Pacific Properties

UNPARALLELED REPRESENTATION.
THE FINEST HAWAII PROPERTIES



Rebecca Keliioomalulu
Real Estate Broker
Statewide and Big Island Top Producer
RebeccaK@ElitePacific.com
Mobile: 808.895.1156
TheRKCollection.com





PACIFIC PROPERTIES

Luxury Service with Aloha Spirit



WORLD-RENOWNED MAUNA KEA



Hale O' Pualani! You CAN live the dream of privileged resort life! Sense the wonder, harmony and adventure of Mauna Kea! This elegant single level home comes furnished and includes versatile/rentable guest hale. MLS# 615957 | 4BR/4BA | 23,439 sqft Land | 2,896 sqft Living | \$1,995,000

**BIG ISLAND
KOHALA COAST**

LuxuryHomeMagazine.com

ELITE
PACIFIC PROPERTIES

Luxury Service with Aloha Spirit



Annie Mendoza
REALTOR, (S)
808.557.5831
annie@elitepacific.com
annie.hawaii.elitepacific.com



Custom Interior & Exterior Functional Art SERVING ALL HAWAIIAN ISLANDS & BEYOND



PLEASE VISIT OUR GALLERY
padilladesigns.com

808 879 0938



THE OFFICIAL KAPALUA EXPERTS *for over 40 years*



PRICE ADJUSTMENT

KAPALUA IRONWOODS 54 - \$2,550,000 FS - OCEANFRONT
3 BEDS • 3 BATHS • LIVING: 2,159 SF
JEANNINE CARR, R(B)-17472 CRS, ePRO - (808) 276-4806
OCEANFRONTMAUI@AOL.COM



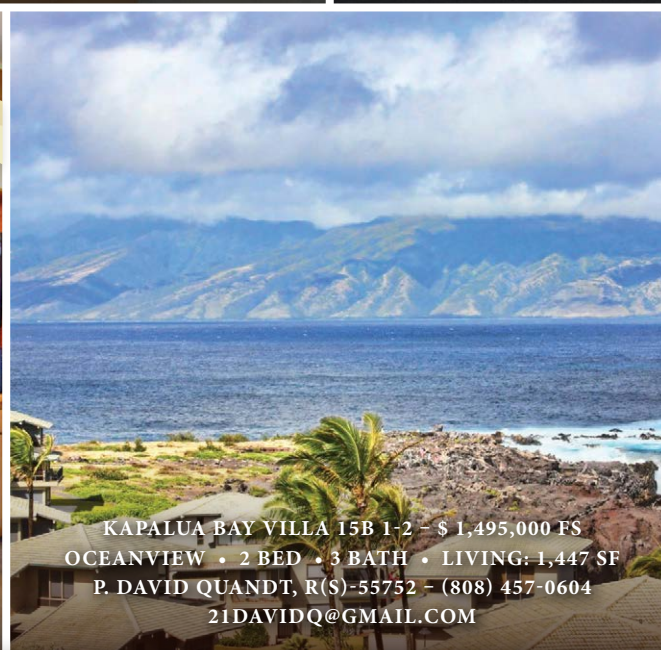
PRICE ADJUSTMENT

PINEAPPLE HILL - 1204 SUMMER RD - \$2,149,500 FS - ON THE GOLF COURSE
GORGEOUS VIEWS • 4 BEDS • 4.5 BATHS • LIVING: 3,704 SF
JOANNE FOXE, R(S)-63115 - (808) 665-3761
(808) 385-2918 • JFOXEX@KAPALUAREALTY.COM

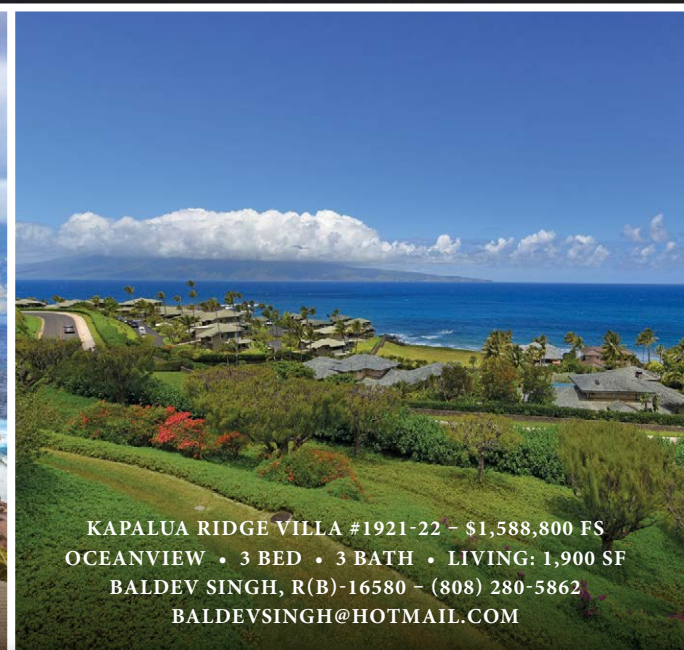


PRICE ADJUSTMENT

KAPALUA RIDGE VILLA #2613-15 - \$1,645,000 FS
OCEANVIEW • 2 BED • 3 BATH • LIVING: 1,778 SF
JOANNE FOXE, R(S)-63115 - (808) 665-3761
(808) 385-2918 • JFOXEX@KAPALUAREALTY.COM



KAPALUA BAY VILLA 15B 1-2 - \$1,495,000 FS
OCEANVIEW • 2 BED • 3 BATH • LIVING: 1,447 SF
P. DAVID QUANDT, R(S)-55752 - (808) 457-0604
21DAVIDQ@GMAIL.COM



KAPALUA RIDGE VILLA #1921-22 - \$1,588,800 FS
OCEANVIEW • 3 BED • 3 BATH • LIVING: 1,900 SF
BALDEV SINGH, R(B)-16580 - (808) 280-5862
BALDEV.SINGH@HOTMAIL.COM

For 40 years, since the initial development at Kapalua Resort, Kapalua Realty has been the go-to for real estate sales and service.

Our team of real estate professionals has over 100 years of combined real estate experience with their pulse on the latest trends and developments in real estate and lifestyle at Kapalua Resort. Our on-resort presence and strong relationships with resort partners give us the inside edge to all things "Kapalua."

Agents are on duty 365 days a year to serve you and are conveniently located in the heart of Kapalua Resort.



800.545.VIEW (8439) • 808.665.5454 • 700 OFFICE ROAD, KAPALUA RESORT
LIC# 13440 • PARADISE@KAPALUAREALTY.COM • KAPALUAREALTY.COM

MAKENA MASTERPIECE



Maui

It's A Lifestyle!
it's time to make Maui a part of yours!

Your View from the Best Keala Penthouse!
New, Furnished and Private Location!



Sold On Maui

To auto receive a text with property video links and info,
TEXT: @soldonmaui TO: 77888



Wailea Realty Corp. A Boutique of Windermere Real Estate
The Shops at Wailea • 3750 Wailea Alanui #B-16 Wailea, Hawaii 96753

Diane K. Pool
REALTOR® (B), ABR
c 808.276.2004



diane@SoldOnMaui.net
#SoldOnMaui





**Trust is the name of the game,
and our game is strong**

**Better Homes and Gardens Real Estate is America's most trusted
brand for lifestyle & design and Hawaii's choice for exceptional
service. Let us show you why.**

WAILUKU OFFICE
(808) 872-2462
54 Maui Lani Parkway, #2030
Wailuku, HI 96793



**ADVANTAGE
REALTY
VALLEY ISLE**

PA'IA OFFICE
(808) 579-8411
98 Hana Highway P.O. Box 791876
Pa'ia, HI 96779

www.bettermauivip.com

SMART SITE PLANNING AND INTELLIGENT ARCHITECTURE FILL
PAPALI WITH LIGHT, FRESH AIR AND BREATHTAKING OCEAN VIEWS...



Papali Wailea is a unique residential development consisting of 24 single-family residential condominium homes situated in a lush, 10-acre garden setting on a gently terraced hillside. The low density and “smart” site plan, breathtaking views from all homes, and generous privacy add to the appeal. Open and airy single-level floor plan. Featuring high-volume ceilings, mahogany finishes, floor-to-ceiling windows, and premium finish work and materials, each individual freestanding residence includes three separate master bedroom/bathroom suites, open lanais, private courtyards, and the rare convenience of an enclosed garage, storage room plus copper roofs. A state-of-the-art community fitness pavilion, stunning 75-foot pool and spa, and an on-site manager to assist owners and oversee the grounds complete this distinctive, elegant and one-of-a-kind Papali Wailea residential community and lifestyle!

Papali Wailea HOME 3 ~ 3 BED - 3.5 BATH ~ \$3,895,000



Papali Wailea HOME 23 ~ 3 BED - 3.5 BATH ~ \$3,795,000



Hawaii Residential Real Estate

2018 Recap and 2019 Forecast



Mike B. Pietsch
President | COO



TITLE GUARANTY
TITLE & ESCROW SERVICES

2018 Recap

We ended 2017 with an unusually high sales volume in comparison to prior years. This signaled the peak of a long real estate cycle. 2018 continued to maintain strong counts until Q4. Hawaii's real estate industry experienced a slight slowdown in Q2 due to the erupting volcano on the Big Island of Hawaii. Q3 had a slight recovery before we experienced a fairly drastic downward adjustment in Q4. The Q4 transaction volume was down 17% statewide in comparison to the same time in 2017. Key markets on Oahu and Maui experienced upwards of 20-25% reduction in sales volume in certain areas.

2019 Forecast

Title Guaranty forecasts a slight 5-8% decline in 2019 residential sales volume in comparison to 2018. Given this downward market trend, Sellers will push to close faster. TG will respond to this need by executing a new FIERCE processing strategy that enables Buyers and Sellers to close faster, if desired. In 2018 it took on average 50+ days to close a transaction. With proper planning and communication, TG feels we can close transactions in 30 days or less if desired by the client and lender. Cash deals can close as fast as the clients desire.



Private & Peaceful - Yet Well Connected

Laie, Oahu | **\$6.9M** | **1.36** acres | **3,200** sqft living | **5BR / 5.5BA** | MLS# 201814171 | **MuliwaiHawaii.com**

Timeless, classic vintage home with the modern conveniences. The majority of the home was built in 1990 and attached to the original 1930s cottage. The newer home was designed by architect Phillip K. White with the inspiration of similar styling of the home from the "The Descendants." The open floor plan and sliding pocket doors invite the outside in, showcasing the expansive ocean and mountain views. Features include the 22 foot vaulted ceiling in the great room, polished concrete floors, flowing stream with walk bridge, paddle tennis court and swimming pool. The property has been well cared for and enjoyed by the family for 5 generations. Located less than 60 minutes from Honolulu, 20 minutes to Sunset Beach and within a mile from the nearest grocery store. For more information: **MuliwaiHawaii.com**

Julia Napua Fetzer REALTOR(B), RB-21938
808.286.7550 | Julia@HawaiiLife.com

Kyle Bernhardt REALTOR(S), RS-78073
808.391.5969 | KyleBernhardt@HawaiiLife.com

John Climaldi REALTOR(B), RB-21517
808.687.1890 | JohnClimaldi@HawaiiLife.com

HAWAII LIFE
REAL ESTATE BROKERS

CHRISTIE'S
INTERNATIONAL REAL ESTATE

LUXURY PORTFOLIO
INTERNATIONAL®

HawaiiLife.com | RB-19928 | *Hawai'i Life is an Exclusive Affiliate of Christie's International Real Estate*





Premium View Location at Black Sand Makena

Kihei, Maui | **\$12.75M** | **0.82** acres | **5,485** sqft living | **5BR / 5BA** | MLS 377267

Black Sand at Makena consists of a 7 lot oceanfront compound with a gated entry. Entering through the massive mahogany door one is captivated by the 20 foot ceilings that capture the full Makena coastline from the Pu'u (cinder cone) of Black Sand Beach through to the West Maui Mountains. The master suite with vaulted ceilings provides an equally impressive view plane of year-round sunsets over the expansive Pacific. When the whales arrive they invariably spend time around Black Sand where you can listen to the sing song of mother and calf. Extensive upgrades and beautifully maintained. Adjacent to the property is the Maluaka subdivision of Discovery.



David W. Richardson

REALTOR(B), RB-10780

808.870.9916 | Dave@HawaiiLife.com

MauiOceanfront.com

HAWAII LIFE
REAL ESTATE BROKERS

CHRISTIE'S
INTERNATIONAL REAL ESTATE

Hawaii Life is an Exclusive Affiliate of Christie's International Real Estate.

HawaiiLife.com | RB-19928





Makena Acreage Across from “Big Beach”

Makena, Maui | **\$6.5M** | **2.79** acres | 4 lots & 4 Future Water Meters | MLS# 378831

Exceptional 2.79 acre estate property across from “Big Beach” in Makena. Utilities to the lot include a 3/4” water meter and underground electricity. You can build one luxury estate or consider subdividing the lot into four-1/2 acre Rural lots. The preliminary subdivision plan includes four lots and four future water meters. With the building site sitting at approximately 48’ of elevation there are expansive views of Makena’s pristine waters and Haleakala’s rolling pastures. 0 Makena Road is one of the last available parcels in Makena with so many options.

David W. Richardson REALTOR(B), RB-10780
808.870.9916 | Dave@HawaiiLife.com

Josh Jerman REALTOR(B), RB-19728
808.283.2222 | Josh@HawaiiLife.com

HAWAI’I LIFE
REAL ESTATE BROKERS

CHRISTIE’S
INTERNATIONAL REAL ESTATE

Hawai’i Life is an Exclusive Affiliate of Christie’s International Real Estate
HawaiiLife.com | RB-19928





Pe'ahi Farms on Maui's North Shore

Pe'ahi Farms on Maui's North Shore is a unique development concept inspired by a deep sense of purpose. Conscientious planning integrates just 16 custom estate sites centered around a farm, with a view to preserving Maui's rich farming heritage. Set atop 130-foot bluffs at Opana Point, Pe'ahi Farms' preserves the most fertile land at the heart of this 232-acre property. Home sites range in size from 2.7 to 25 acres. Offering 2.5 miles of completed private roads, private water, power to each lot and SMA approval, Pe'ahi Farms is ready for you to build your dream home. From the developer: *"Utilities in place and SMA permits for each lot saves 100s of thousands of dollars and saves years of planning; approval risk and time needed to complete utility extensions. Buy with confidence about when your estate will be ready for occupancy."*

Haiku Maui | Starting at **\$1.2M** | **2.7** to **25** acre lots | **Ocean and Mountain Views** | **PeahiFarms.com**



Upcountry's Exclusive Kulamalu Hilltop

35 Ohia Lehua Place, **Pukalani, Maui** | **\$2.252M** | **0.24** acres | **2,981** sqft living
4BR / 3BA | MLS# 378656



Tranquil Estate in Kula 200

162 Hoopalua Drive, **Kula, Maui** | **\$1.84M** | **2.02** acres | **4BR / 3BA**
3,530 sqft living + **1,131** sqft Cottage | MLS# 377499

Josh Jerman REALTOR(B), RB-19728
808.283.2222 | Josh@HawaiiLife.com

HAWAI'I LIFE
REAL ESTATE BROKERS

CHRISTIE'S
INTERNATIONAL REAL ESTATE

Hawai'i Life is an Exclusive Affiliate of Christie's International Real Estate
HawaiiLife.com | RB-19928





Matt Beall

PB, REALTOR(B), RB-17738

808.346.7413 | Matt@HawaiiLife.com

Josh Jerman

REALTOR(B), RB-19728

808.283.2222 | Josh@HawaiiLife.com

Modern 2 Acre Estate in Makena

This private two-acre estate in Makena complements the natural elements and is connected to the land. There are seven structures spanning across the two acres encompassing a large kitchen and dining area, a master bedroom suite, two private guest suites, a theater room, gym, office, an 'ohana, and a three-car garage. Pathways through ginger, lpe bridges over lava rock stream beds, and lush lawns under verdant tree canopies connect the property's structures for a seamless indoor-outdoor living experience. Includes a 25-meter lap pool, infinity lounge pool, gym, and a fully-lit tennis court.

Makena, Maui | **\$12M** | **2.07** acres | **5,828** sqft living | **4BR / 4.5BA + Ohana** | MLS# 379985



Keawakapu Beach Oceanfront Estate

Located directly on world-renowned Keawakapu Beach, this 1/2 acre property has approximately 95 linear feet of beach frontage. Location and luxury come together in this modern expression of a Hawaiian plantation home. Indoor and outdoor areas blend seamlessly with pocketing doors that open to the oceanfront lawn from the main residence and to the pool courtyard from the cottage. A new state-of-the art Photo Voltaic Solar System by Maui Solar Project and a new Central A/C system combine to minimize expenses and reduce the ecological footprint.

South Maui | **\$15.5M** | **.55** acres | **3,877** sqft living | **5BR / 4BA** | **Beach Access** | MLS# 378401

Josh Jerman

REALTOR(S), RS-63854

808.283.2222 | Josh@HawaiiLife.com

Josh.HawaiiLife.com





Hekili Point Secluded Estate

West Maui's Oceanfront sanctuary is peaceful and private with a rare exotic Hawaiian ambience. Set on 1.34 acres of land with a sprawling ocean lawn, 75-foot pool and spa, tropical gardens and walkways.



Olowalu Makai Plantation Hale

This legacy property, bordering a stream in a very special agricultural-zoned community on West Maui's coastline south of Lahaina, comprises more than 4.55 acres and 300 ft of ocean frontage in an exclusive gated enclave. Currently graced by a plantation-style property with a three-car garage, the opportunity exists to add an estate home to this spectacular site.



16-Acre Oceanfront Olowalu Makai

This extremely rare parcel, bordered by the Olowalu Stream, has a sense of peace and natural spirit unlike any other on Maui. Acquisition of all three Olowalu Makai properties could create a legendary estate offering a total of 22 acres and 2,200+ feet of linear ocean frontage



2.21-Acre Olowalu Makai Property

Adjacent to the 4.55-acre Plantation-style hale, is a 2.21-acre oceanfront site. It is available for sale separately or as a package which would create a truly exceptional compound boasting nearly seven lush acres and over 500 feet of pristine ocean frontage.



Mary Anne Fitch

REALTOR(B), RB-15747

808.250.1583 | sold@maui.net | soldmaui.com

HAWAII LIFE
REAL ESTATE BROKERS

CHRISTIE'S
INTERNATIONAL REAL ESTATE



Nam L. Le Viet

REALTOR(S), RS-61810

808.283.9007 | nam@mauisold.com

Hawaii Life is an Exclusive Affiliate of Christie's International Real Estate.
HawaiiLife.com | RB-19928





Kapalua's Finest with Ocean, Resort & Sunset Views

Perched at the summit of the Plantation Estates Phase II, this single-level estate offers panoramic views of Honolua Ridge, the Kapalua Ritz Carlton resort community and the islands of Molokai and Lanai. Built in 2017 and spaciouly spread across 7,286 square feet of single-level living, this estate offers everything and more! A theater (equipped with a 10' screen), 300+ bottle walk-in wine room, exercise room, home office, infrared sauna, 3-vehicle garage and game room complete with a pool table and fireplace. Indoor-outdoor living is created with the great room's 14' walls with 20' ceiling height and retractable sliding doors throughout the estate.

701 Mokuleia Place, **Kapalua, Maui** | **\$10.5M** | **2.12** acres | **7,286** sqft living | **4BR / 4BA + 3 Half Baths** | **3-Car Garage** | **Pool & Spa** | MLS# 380142



Papaua Estate, Honokeana Cove Ocean Access

30 Papaua Place, **Napili, Maui** | **\$8.5M** | **0.23** acres
3,742 sqft living | **3BR / 3.5BA** | **Offered Furnished**
MLS# 377918



Modern Design with Ocean/Golf Course Views

204 Anapuni Loop, **Lahaina, Maui** | **\$4.8M** | **0.94** acres
4,827 sqft living | **4BR / 3BA + 2 Half BA** | **Walk-in Wine Room** | **Pool & Spa** | MLS# 380854



Living Launiupoko with Ocean/Mountain Views

972 Kai Hele Ku Place, **Launiupoko, Maui** | **\$3.998M**
1.13 acres | **3,194** sqft living | **4BR / 4.5BA** | **Pool & Spa**
MLS# 381279



Raymond S.F. Chin

MBA, REALTOR(B), RB-20642

808.344.2677 | Ray@RayChin.com

HAWAII LIFE
REAL ESTATE BROKERS

CHRISTIE'S
INTERNATIONAL REAL ESTATE

RayChin.com
YOUR Time is Now®

Hawaii's Life is an Exclusive Affiliate of Christie's International Real Estate.
HawaiiLife.com | RB-19928



Maui Luxury Real Estate LLC

MauiRealEstate.NET

Prime Oceanfront Location!

Here is your chance to enjoy expansive ocean views, spectacular sunsets and a front row seat to whale watching in season. This 3 bedroom beach house and detached 2 bedroom cottage with a 400+ square foot storage room offers a variety of living options. The owned photovoltaic system plus solar hot water systems add to the incredible value of this property. \$3.298M



Wailea Palms

New Listing! Oceanview, 2 bed, 2 bath condo in the Wailea Palms Residences with no stairs to the unit! Fabulous complex amenities, gated main entrance, picturesque ocean view pool & hot tub with large lanai areas, covered gathering section, BBQ and entertainment area plus all Wailea Discounts. Offered furnished. \$1.058M



Enticing Custom Wailea Home

Beautiful Ocean views from dawn to dusk with this custom 4,100 sf home offering so much including deeded ocean view easements plus “to live for” chef’s kitchen, two huge living rooms, two master suites and 2 more bedrooms, a secluded heated pool & spa and owned photovoltaic system. Come experience perfection.

\$2.385M

ANOTHER STATE RECORD SETTING!

They did it again! Clint and Bob Hansen are both being honored again as two of the Top 100 Realtors in the State of Hawaii. If you want to know what they can do for you, email us at Hansens@MauiRealEstate.NET



Beachfront Paradise!

Enchanting views and a sensational price for this incredible two bedroom, two bath jewel. Toes in the sand location. Enjoy strolling to resort activities and restaurants, surfing or just simply relax on the beach. Plus enjoy the ability to vacation rent when not using.

\$1.675M



Oceanview Wailea Kai

Gorgeous home ideally located in Wailea Kai ~ close to Keawakapu Beach! This palatial residence with 4 bedrooms beautifully incorporates the flow of the home into one of the largest yards in the neighborhood. Soothing pool and an ocean view!

\$1.565M

Maui Luxury Real Estate LLC
The Hansen Ohana Real Estate Group
 Certified Luxury Home Marketing Specialist
www.MauiRealEstate.NET
Hansens@MauiRealEstate.NET
 808.280.1650



Clint Hansen, R(B), Donna D. Hansen, R(S), and Bob Hansen, R(PB)



Share joyful moments in the home you deserve

Have your eye on a new home? Buying a vacation home or investment property? Or maybe you're looking to refinance your present home.

Whatever your home financing needs may be, you've come to the right place.

Financing for your place

Whether you're buying a new home or refinancing your current one — we understand everyone's needs are different.

That's why we have different home financing options and a wide range of loan amounts, including those for homes up to \$6 million or higher. So chances are, we have a jumbo loan to meet your needs:

- Do you want peace of mind about rising rates?
- Are you wondering about customer rate discounts?
- Do you need a low down payment option?
- Are you interested in buying with cash?
- Do you want to lower your payments?

If you're looking for answers, let's talk about your situation. We are here to help you find the home financing you need and the distinguishing benefits you deserve.

To learn more about our jumbo home financing options, contact us today.



Hawai'i

Kona Sales Office

75-5722 Kuakini Hwy., Ste. 105
Kona, HI 96740
808-329-5926



Maui

Wailea Sales Office

Private Mortgage Banking
Wailea Gateway Center
34 Wailea Gateway Place, Ste. A-205
Kihei, HI 96753
808-891-6075



Oahu

Honolulu Sales Office

1357 Kapiolani Blvd., Ste. 910
Honolulu, HI 96814
808-946-8832



Mauna Lani Point F102

1,555 SQFT | 2BR/2.5BA
\$2,165,000 | Mauna Lani Resort

Oceanfront living in a beautiful setting! This lower level unit in a prime location at the Point has been fully renovated with great attention to detail and delightful custom features. Enjoy a tranquil, private environment open to dramatic views. Unobstructed ocean, fairway, Maui and sunset views year round complete the quality Island living everyone is looking for! All within a gated community with access to all the Resort amenities.



Margery Mayo
REALTOR® Broker in Charge
RB 17852
68-1330 Mauna Lani Drive, Suite 130
Kohala Coast, HI 96743

www.HapunaRealty.com
margerymayo@margerymayo.com
808.987.6385



Ka Milo 419
Mauna Lani Resort

2,489 SF | 4BR/3.5BATH
\$1,290,000 | MLS# 621878

Ka Milo 419/74-2 is a 4-bedroom paired home with ocean and garden views in the Mauna Lani Resort. It is located in the elevated section of the community, facing northwest. This open concept home is great for family and entertaining. It features hardwood and stone floors, high end kitchen appliances, granite countertops, grass cloth ceiling treatment with Mahogany trim in the great room, pocket doors, LG washer & dryer and 2-car garage. The Photovoltaic system ensures low monthly utility costs. The home is sold furnished and ready for a new owner to move in and enjoy. KaMilo owners enjoy a large amenity center with a gathering hale, fitness room, two hot tubs and two swimming pools.



Wehilani Subdivision Kailua Kona

4,543 SF | 4BR/5.5BATH | \$2,295,000 | MLS# 622707

Beautiful 4 bedroom, 5.5 bath with a swimming pool on almost 2 acres in the gated community of Wehilani. Meticulously landscaped with producing Kona coffee, many fruit trees and sweeping ocean & sunset views. Three structures with 4 separate entrances create privacy and provide the perfect setting for this property. The main house has a large kitchen with cherry cabinets, granite counters, L-shaped island and stainless appliances. Glass doors in dining & living areas open to the massive lanai with pool/spa ensuring ocean views throughout. The master suite features separate granite vanities with vessel sinks, travertine walk-in shower, large walk-in closet, French doors to lanai & pool and ocean views. A few steps away is a 2-level structure with separate entrances to suites on each floor. Each suite has a bedroom & bath with a private lanai. The 1 bedroom/1 bath, 1400 sf Ohana is positioned on the other side of the main home. Featuring wood floors, full kitchen with granite counters & stainless appliances, travertine bath & walk-in shower. Walls of windows & a large sliding door open to a private lanai and amazing ocean views. No detail has been left undone in this property leaving you with endless possibilities!



Tomoko Matsumoto
REALTOR® Principal Broker, Owner
Hapuna Realty
68-1330 Mauna Lani Drive, Suite 130
Kohala Coast, HI 96743

www.HapunaRealty.com
Tomo@HapunaRealty.com
808.557.8689



Hapuna Beach Villa at Mauna Kea Resort

9,250 SQFT | 4BR/5FB/1HB | 1.46AC

The Hapuna Beach Villa is a landmark estate set on the most exclusive oceanfront promontory at the Mauna Kea Resort. This is a one-of-a-kind living environment – supremely private, quietly exclusive and in all ways visually and spiritually invigorating. Crowning the most prominent point at the Mauna Kea Resort, and sitting majestically above a velvet green lawn that leads to the beach considered the best in all Hawaii, is a rare opportunity for an unparalleled island lifestyle at the water's edge. No setting on the Big Island is quite so dramatic or enjoys such a rich array of amenities.



MaunaKeaLiving.com



Hapuna Beach Residences Mauna Kea Resort

675 SF ~ 3,500 SF | Studio ~ 4BR/4BATH
\$1,500,000 ~ \$8,000,000

INTRODUCING HAWAII'S MOST EXTRAORDINARY BEACHFRONT RESIDENCES ON HAPUNA BEACH AT THE BELOVED MAUNA KEA RESORT

Let nothing come between you and the sea, sand and sky. Let nothing come between you and the legendary destination that created and has defined island luxury for generations. A rare and historic opportunity to own what may be the last beachfront residences in the world so magnificently located. This beachy contemporary residence features a private pool, European Oak wood flooring, high-end appliances such as Wolf stove/oven/microwave, Sub-Zero fridge, Miele dishwasher, Asko or Maytag front-load washer/dryer and upscale fixtures. Do not miss this rare opportunity to own this one-of-a-kind residence steps away from one of the best white sand beaches in the world!

MaunaKeaLiving.com



www.HapunaRealty.com
Tomo@HapunaRealty.com
808.557.8689

Tomoko Matsumoto
REALTOR® Principal Broker, Owner
Hapuna Realty
68-1330 Mauna Lani Drive, Suite 130
Kohala Coast, HI 96743



Hapuna Estates

CUSTOM ESTATE HOMESITES WITH LONG SWEEPING VIEWS OF THE KOHALA COAST
FROM \$795,000



PLEASE VISIT OUR NEW SALES CENTERS AT WESTIN HAPUNA RESORT AND AT SHOPS AT MAUNA LANI



To learn more about the offerings at Hapuna contact:
Tomoko Matsumoto
808.557.8689
Tomo@MaunaKeaLiving.com

REALTOR® HI RB-20042

Hapuna Beach Residences

LUXURIOUS BEACH AND OCEANFRONT RESIDENCES ON HAWAII'S BEST BEACH
FROM \$1.5 – \$8 MILLION



**NOW ACCEPTING CONTRACTS
IN OUR SECOND PHASE**

Here is the opportunity to make the Big Island's legendary resort your home — with dramatic new offerings that include 11 custom homesites with incomparable 360-degree views from the snowcapped Mauna Kea all the way to Maui. There is also the first-ever opportunity to own absolutely on Hawaii's best beach — Hapuna. Spacious one- to four-bedroom residences literally steps to the water's edge.

MaunaKeaLiving.com

 For Hapuna Beach Residences, obtain the Developer's Public Report for a Condominium required by Hawaii law and read it before signing a binding sales contract. No federal or state agency has judged the merits or value, if any, of these properties. This does not constitute an offer to sell or a solicitation of any offer to buy where prohibited by law. For Hapuna Estates, obtain the Public Offering Statement required by Hawaii law and read it before signing a binding sales contract. No federal or state agency has judged the merits or value, if any, of these properties. This does not constitute an offer to sell or a solicitation of any offer to buy where prohibited by law. It is important to note that some or all of the information set forth herein may change substantially, including whether any properties will, in fact, be offered for sale.

LUXURY HOME

M A G A Z I N E

6800 Kalanianaʻole Hwy., Suite 101 Honolulu, HI 96825

It's Your Choice

Choose Hawaii's kama'aina title and escrow company



Photo: Cully Kamisugi



TITLE GUARANTY
— SERVING HAWAII SINCE 1896 —

Title and Escrow is our business.
Hawaii is our home.

Visit TGHawaii.com