

LUXURY HOME[®]

M A G A Z I N E

Hawai'i KAUAI • OAHU • MAUI • MOLOKAI • LANAI • BIG ISLAND

ISSUE 14.2



LUXURYHOMEMAGAZINE.COM

Hekili Point Estate, Lahaina, Maui
Presented by Mary Anne Fitch on Page 55

LANAI



unit 1202 **\$2,150,000** | unit 1102 **\$1,945,000**

- 2 BD + Den, 2 BA, 1,691 - 1,704 sq. ft.
- Beautiful Diamond Head, ocean, marina, city and mountain views

unit 305 **\$1,799,000**

- 2 BD, 2.5 BA, 1,700 sq. ft., Lanai 93 sq. ft.
- Unique duplex layout with a lanai, partial ocean and Kamakee Street views

SOLD



PARK LANE #7400
\$6,200,000

ESCROW



ANAHA #50
\$2,250,000



John "Jack" Tyrrell
President
Realtor®, CRS
CPA (not in public practice)
Lic. # RB-19880
E: Jack@jtchawaii.com
C: 808.306.6933



May Lew Tyrrell 廖富漢
Executive Vice President
Realtor®, MBA, GRI, CRS, CIPS
Lic. # RB-22693
WeChat: Mayinhawaii (普通话)
E: May@jtchawaii.com
C: 808.223.3364



unit 1300 \$6,500,000

- 3 BD, 3.5 BA, 2,710 sq. ft., Lanai 154 sq. ft.
- Luxurious Corner unit with breathtaking views of Diamond Head, Waikiki, ocean, mountain, beach park, marina and sunset

unit 2306 \$3,800,000

- 3 BD, 2.5 BA, 2,023 sq. ft., Lanai 76 sq. ft.
- Luxurious Corner unit with breathtaking views of Diamond Head, Waikiki, ocean, mountain, beach park and marina

unit 1603 \$2,089,000

- 1 BD, 2 BA, 1,139 sq. ft., Lanai 69 sq. ft.
- Stunning ocean, marina, mountain and sunset views

ESCROW



HOKUA PENTHOUSE #36J
\$6,500,000



WAIEA #901
Represent buyer



WARD VILLAGE
Top Producing Agent by
Units & Dollar Volume
2014

WARD VILLAGE
Top Producing Agent by
Units & Dollar Volume
2015

For More Information:
808 532 3330
www.jtchawaii.com



Jack Tyrrell & Company



@jtchawaii



@jtchawaii

JACK TYRRELL
& COMPANY

A Real Estate Brokerage Corporation

* The information presented herein is provided as is, without warranty expressed or implied of any kind. Information herein deemed reliable but not guaranteed.

IN ESCROW



WAIEA #1301

2,713 SQFT | 3BR/3.5BA | MLS# 201820242

\$4,490,000 | Kaka'ako

Enjoy luxurious living with this corner unit in Waiea. Contemporary design, upgraded polished Black Sea travertine flooring and private foyer open directly to spectacular views. Miele appls in a chef's kitchen. Spa-like mstr bth with soaking tub/shwr. Diamond Hd, city & ocean vistas from lanai. SOLD fully furnished. Services & amenities are first-class, w/concierge desk, shuttle services to Ala Moana Shopping Ctr, party, theatre & massage rooms, dog park, infinity edge ocean-view pool, whirlpool spa, sauna, steam rm, sunset bar, BBQs, cabanas, playground, golf simulator, fitness cntr, yoga rm, guest suites, 2 prkg stalls. Video: <https://bit.ly/2Np28SK>

Marti Hazzard

RA, Luxury Property Specialist
RS-62782
Direct: 808.738.3948
Cell: 808.478.1200
Martih@cbpacific.com
www.martihazzard.com



GLOBAL
LUXURY®

Samantha Castanera-Ahn

RA, RS-44101
Direct: 808.738.3473
Cell: 808.284.3803
SamanthaA@cbpacific.com





3175 NOELA DRIVE

6BR/7.5BA | 12,844 SQFT | 28,962 SQFT LAND
MLS#201907819 | \$9,250,000 | Honolulu

Stunning, private Diamond Head estate with 5 bdrms, 6.5 baths, plus a separate 1 bdrm/bath Cabana for guests, was designed by award-winning architect Phillip White. Gorgeous living & dining areas open onto wrap around lanais w/ coastline & city views and iconic Diamond Head beyond w/ dramatic tropical landscape as living art. A chef's kitchen w/butler's pantry & breakfast nook open to a poolside arbor, w/spa & putting green steps away. Master suite w/lanai, soaking tub, sauna, dressing room, coffee bar & massage room is a dream! A games room, home theater, fitness center & 3-car garage complete this fabulous estate.



GLOBAL
LUXURY™



If you are thinking of Buying or Selling
your Home and **RESULTS MATTER**,
CALL TRACY TODAY!

Tracy Allen
Vice President, RA, RS-46610
Global Luxury Ambassador
Luxury Property Specialist
808.593.6415
Tracy@cbpacific.com
www.TracyAllenHawaii.com



CUSTOM WAIEA OCEAN RETREAT

3BR/3.5BA | 2,377 SQFT | MLS# 201904091
\$6,700,000 | Honolulu

Presenting Waiea #2101, an unrivaled paragon of modern luxury in dynamic, desirable Ward Village. Private elevator entrance leads to a spacious ocean view foyer and beyond to the open, contemporary floor plan. Stunning interior design work by Clifford Planning & Architecture. Centrally located in Kaka'ako, Honolulu's most desirable upscale walkable neighborhood. All of your needs are within blocks including Ala Moana Beach Park, Whole Foods, Ward Village dining, shopping, Ward theaters, with snorkeling, surfing & water sports directly across the street.



SWEEPING OCEAN VIEWS FROM ONE ALA MOANA

2BR/2.5BA | 1,464 SQFT | MLS# 201903493
\$2,488,000 | Honolulu

High-end luxury meets ultra-convenient lifestyle in prestigious ONE Ala Moana. Situated alongside Ala Moana Center and one block from Ala Moana Beach Park, #1402 features resort-style amenities and panoramic ocean views. Desirable '02' unit features a 2 Bed + Den, 2.5 Bath open floor plan allowing room to customize. Designer Studio Becker kitchen, fine hardwood flooring, floor to ceiling glass, & resort-style ensuites make this a special destination. Work, Play, Live in the heart of Kaka'ako.



"KA HALE KAHAKAI"

4BR/3BA | 2,830 SQFT | 13,518 SQFT LAND
MLS# 201904085 | \$2,300,000 | Kailua

Presenting "Ka Hale Kahakai", a custom-crafted Kailua home one block from sandy beaches & stretching shorelines. Reconstructed & upgraded in 2018 with high-end finishes & fine details, this sprawling tropical home features a 3 bedroom, 2 bath main home with a separate 1 bedroom, 1 bath guest cottage. Kailua Town Center, Whole Foods, dining, shopping & entertainment are just blocks away; easy freeway access to Ala Moana, Hawaii Kai & more. With Kailua Beach just across the street, enjoy water sports, beach activities & the island lifestyle in paradise!



Sachi Braden

Sachi Hawaii
CEO, Founder, & Principal Broker | RB-16308
808.596.8801
info@sachihawaii.com | www.sachihawaii.com

ハワイの不動産売買、別荘管理、賃貸管理に関するお問合せは日本語どうぞ
サチハワイ総合不動産会社ーハワイ高級物件のエキスパート





HALE KAI BEACHFRONT - 838 F NORTH KALAHEO AVE Kailua | \$5,350,000 | 5BR/4BA | 3,381 SQFT | 10,178 SQFT LAND

Your own Beachfront Paradise! Ideally located at the north end of 2.5 miles of Kailua Bay, this lovely custom home is perfect for a large or extended family with 5 beds/4 baths, multiple living areas, a private courtyard, and huge lawn stretching out to white sandy beach and gentle surf. Beautifully renovated to maximize sweeping ocean views and cooling trade winds, this home is the perfect island retreat. Membership in the coveted Hale Kai Surf and Racquet Club with just 14 other homes completes the idyllic lifestyle that can be yours. www.halekaibeachfront.com



KAILUA SURF - 16 NAMALA PLACE Kailua | \$6,888,888 | 5BR/5.5BA | 5,160 SQFT | 11,706 SQFT LAND | MLS# 201901825

INDULGE yourself in ultimate beachfront luxury on world-renowned Kailua beach! This contemporary masterpiece, designed by award-winning architect Alwyn Trigg-Smith and built in 2008, features world-class amenities with German engineering, ultra modern kitchen and baths, vanishing walls of glass, expansive living spaces, a dramatic 80' lap pool, a 1,200 sf master bedroom suite with forever coastal views, and your own private gym. ENTERTAIN friends and family, RELAX by the pool, PLAY in the surf and ENJOY the best of island living in this stunning private beachfront estate.



Annie Kwock, R
 President and Principal Broker
 Office: 808.247.7521
 Cell: 808.780.4444
 Fax: 808.236.0312
annie@trinityproperties.com
www.trinityproperties.com



1555 KAPIOLANI BLVD. PH2200

2,651 SQFT | 3BR/3BA | MLS# 201903785
\$3,698,000 | Ala Moana

This luxurious penthouse above Ala Moana Center offers stunning ocean and mountain views from an open floor plan with 10-ft high ceilings. With more than 2,650 square feet of living space, this property truly feels like a single family home. This 3 bed, 3 bath home features upgrades including walk-in closets, wine chiller, luxury appliances, and laundry room with a separate service entrance. Amenities include a rooftop terrace, golf room, spa, theatre, gym, infinity-pool, whirlpool spa, barbecue areas, jogging paths, and more.



1108 AUAHI ST. PH3602

2,906 SQFT | 4BR/4.5BA | MLS# 201830599
\$4,980,000 | Kakaako

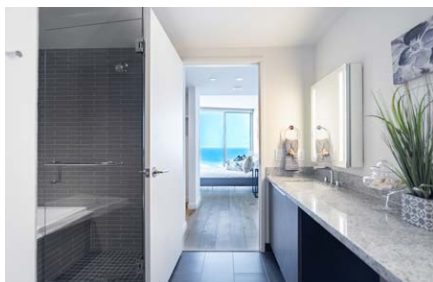
Unwind in this rare 4 bedroom, 4.5 bath penthouse in Anaha with an expansive open floor plan showcasing high ceilings and spectacular floor-to-ceiling windows overlooking views of the ocean, mountains, and Diamond Head. This home features 2 full-sized wine cellars, Miele appliances, European cabinetry, quartz counters, hardwood flooring, walk-in closets, separate laundry room, with each bedroom featuring its own private ensuite bath. With resort-like amenities from a glass bottom pool to a putting green, this unit is a must-see.



1001 QUEEN STREET #3701

1,329 SQFT | 3BR/3BA | MLS# 201901392
\$2,350,000 | Kakaako

This beautifully furnished 3 bedroom, 3 bath unit in Ae'o features an open concept floor plan, approximately 1,329 square feet of living space, and boasts incredible wrap-around ocean views from floor-to-ceiling windows. Luxurious upgrades include wood floors throughout, a Toto Neorest Washlet, double layered window treatments, and dual vanities in the bath. Storage room included and located on level 2 by exit to Whole Foods Market. Resort-like amenities include a concierge, outdoor barbecue, rooftop terrace, pool, and more.



Esther H. Park

REALTOR®, Senior Vice President
ABR CHMS CRS GRI SRS, RB-21002
808.489.6733
esther.park@sothebysrealty.com
한국어 서비스 가능



List

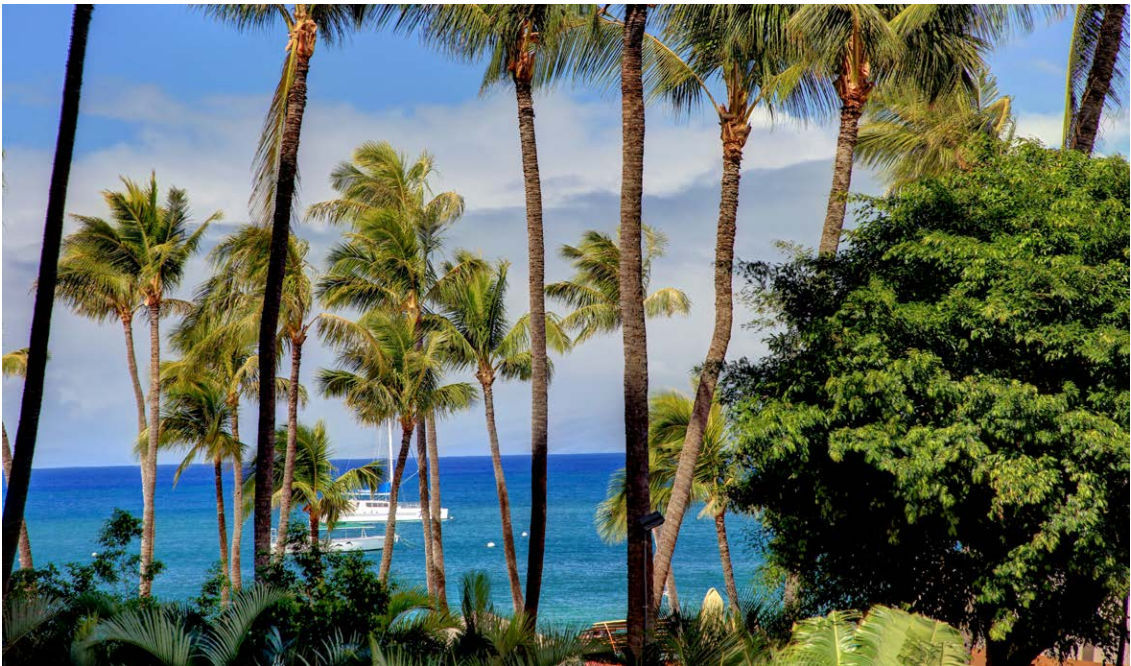
Sotheby's
INTERNATIONAL REALTY



KAANAPALI ALII 2-205

1,650 SQFT | 2BR/2BA | MLS# 382212 | \$2,850,000 | Kaanapali

The Kaanapali Alii Luxury Condominiums have and will remain the envy of all who frequent the Kaanapali Beach Resort, and unit #225 is now available for your personal ownership. This inner-court facing 2-bedroom 2-bath residence has been exquisitely remodeled and furnished with an elegant island flair. A few of the stylish finishes include natural stone flooring, custom cabinetry in the kitchen and bathrooms complemented with beautiful granite countertops. The kitchen also includes an array of stainless-steel appliances that completes this elegant home.



KAANAPALI ALII 2-302

1,441 SQFT | 1BR/2BA | MLS# 381842 | \$1,325,000 | Kaanapali

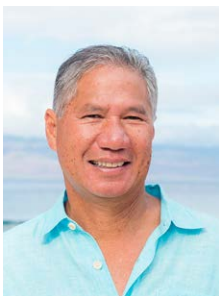
Experience the best of the “Kaanapali Lifestyle” from your private residence within the luxurious Kaanapali Alii Condominium Resort. Unit 2-302 is now available for your personal ownership. This tastefully appointed one bedroom two bath home features a spacious living area which is accompanied with an adjoining den, dining room and large master suite. Upgrades include Travertine flooring, granite countertops and custom cabinetry throughout. Schedule an appointment with your favorite Realtor to see this lovely Kaanapali Alii residence today!



Leah Lambros
R(S) Lic. #77914
Cell: 530.906.9180
Toll Free: 866.661.7887
Fax: 808.661.8358
Leah-Whalers@KW.com
www.KaanapaliLuxuryLiving.com

KELLERWILLIAMS
Luxury
INTERNATIONAL
2580 Kekaa Drive Set. 118, Lahaina, HI 96761

Gregory Harbottle Inc. R (PB)
Luxury Property Specialist, Lic. #19615
Cell: 808.385.8059
Toll free: 866.661.7887
Fax: 808.661.8358
ghthkh@msn.com
www.KaanapaliLuxuryLiving.com



ISSUE 14.2

Please Join Us for Issue 14.3
Reservation Deadline: May 03, 2019
Circulation: June/August

ISSUE	DEADLINE	CIRCULATION
14.3	05/03/19	06/12 - 08/13
14.4	07/10/19	08/14 - 10/15
14.5	09/06/19	10/16 - 12/17
14.6	11/08/19	12/18 - 02/28

CONTENTS



* Founding or Prestigious Member

THE ISLAND OF MAUI

Mary Anne Fitch*	Front Cover, 54-55
Nam L. Le Viet*	Front Cover, 54-55
Gregory Harbottle Inc.*	9
Leah Lambros	9
Robert H. 'Robbie' Dein*	11
Kenneth M. 'Ken' Hayo*	11
Montage Residences Kapalua Bay	28-29
Robert R. Myers*	32-33
Kapalua Realty	50
Diane K. Pool*	51
Wailea Realty	53
Raymond S.F Chin*	56
Josh Jerman	57-59
Matt Beall	57
Linda McCormick	58
David W. Richardson	59
The Hansen Ohana Real Estate Group*	60-61

BUSINESS PARTNERS

Wells Fargo Home Mortgage*	47
Padilla Designs, LLC*	49
Title Guaranty	62, Back Cover

THE ISLAND OF OAHU

John "Jack" Tyrrell*	2-3
May Lew Tyrrell	2-3
Marti Hazzard*	4
Samantha Castanera-Ahn	4
Tracy Allen*	5
Sachi Braden*	6
Annie Kwock*	7
Esther H. Park	8
Orion Barels	21
Scott Carvill	22-23
Mary Anne Bruno	24
Melvin Leon Guerrero	25
Patricia Choi	26-27
Victoria NV Gutierrez	26-27
Thomas Wilson	36
Jeffrey M. Fox	37
Gretchen B. Duplanty	37
Jason Carey	38
Alesia Barnes	39
Carolyn M. Stone	48

THE BIG ISLAND

Lidia Maylath	12
Yvonne Khouri-Morgan*	13
Joni J. Metzler	14-15
Eileen Lacerte*	16
Renée H. Kraft	17
Kohanaiki	18-19
Phil Fukushima	40-41
Brian Axelrod	40-41
Karen Ferrara	42
Jocelyne S. Twigg-Smith	43
Ron Rigg	43
Rebecca Kelihoomaluu*	44
Donna Duryea	45
Meg Saunders	45
Kelly Shaw	36
Margery Mayo*	63
Tomoko Matsumoto*	64-67
Hapuna Beach Residences	66-67

THE ISLAND OF KAUAI

Hannah Sirois	34-35
---------------	-------



FRONT COVER HOME

Hekili Point Estate
Page 55
Photograph by Travis Rowan, Living Maui Media

LUXURY HOME MAGAZINE® OF HAWAII™
6800 Kalanianaʻole Hwy., Suite 101
Honolulu, HI 96825
Phone: 866.853.2474 • Fax: 866.845.3457

FOR ADVERTISING
INFORMATION VISIT:
info@lhmhi.com

The most comprehensive and targeted distribution in the area, bar none!

SUNSHINE PUBLICATIONS, INC.
1020 Suncast Lane, Suite 104
El Dorado Hills, CA 95762

Phone: (916) 458-6010
Fax: (916) 404-8867
info@luxuryhomemagazine.com

LuxuryHomeMagazine.com

Visit Our Blog:
LuxuryHomeMagazine.com/blog

Chief Executive Officer
Brad Taylor | brad@lhmmediagroup.com

Chief Financial Officer
Cathy Taylor | cathy@lhmmediagroup.com

Publishing Opportunities
publishing@lhmmediagroup.com

Published six times per year
©2019 Sunshine Publications, Inc.

Luxury Home Magazine®, Luxury Living and Lifestyle™ and LuxuryHomeMagazine.com are protected trademarks of Sunshine Publications, Inc. and LHM Media Group. Publisher is an authorized independent distributor and licensee for a market specific area of Luxury Home Magazine®, Luxury Living and Lifestyle™ and LuxuryHomeMagazine.com. Publisher is licensed through Sunshine Publications, Inc. and LHM Media Group. Sunshine Publications, Inc. and LHM Media Group are not responsible for the contents of the magazine or the acts or omissions of the publisher or its representatives and makes no representations or guarantees. Reproduction in whole or in part (including materials, photos and formats) in any form without written permission from Sunshine Publications, Inc. and LHM Media Group is prohibited. All submissions become the property of Sunshine Publications, Inc. and LHM Media Group and may be used in any print, digital, social and online media. All rights reserved.

The information contained in *Luxury Home Magazine*® is deemed reliable, but not guaranteed. Contact each individual agent to verify information, which is subject to change.

Made and Printed in the USA.



Spring is a lovely, albeit transitional, time of year. It's long past the New Year and not quite summer, but there's renewal in the air. Whether you take that energy into your professional life or focus is on your hunt for a new home, it's the perfect time of year for a fresh start.

This issue's Maui cover home, Hekili Point Estate, is just five minutes from Lahaina Town yet remote seclusion surrounds you. This grand estate is comprised of three plantation structures set on 1.34 acres of land with a sprawling ocean lawn, 75-foot pool and spa, tropical gardens and walkways. For more information on this oceanfront sanctuary, presented by Mary Anne Fitch, turn to page 55.

Mahalo,

Maresa Giovannini
Maresa Giovannini
Editor in Chief

Aloha from Maresa

Say Aloha! Send editorial & advertising inquiries to info@lhmhi.com



WALEA POINT EXPANSIVE OCEAN VIEWS

1,839 SQFT | 3BR/2BA | MLS# 381329 | \$2,998,000 | Wailea

Prominently positioned upon the 28 'Premier Oceanfront' Acres in World Class Wailea Resort, next door to The Four Seasons, Wailea Point #2302 is a 'Superb View Oriented Residence' within a low density, revered, lush tropical paradise. You will be mesmerized by the unobstructed 'Panoramic Ocean Views' encompassing the South Maui Coastline, West Maui Mountains, Island of Lanai & the 'not to be missed' verdant green hills of Ulupalakua on Haleakala's S.W. flank. **WP2302.info**



PRIVATE 'PEACE OF UPCOUNTRY PARADISE'

3,685 SQFT | 2 AC | 3BR/3BA | MLS# 380681 | \$2,998,000 | Ulupalakua

Enjoy ocean & outer island views across the South Maui & Makena coastlines! Relax on the wrap around lanai, or by the resort quality pool & deck. Hardwood floors with Mahogany accents, stainless steel appliances, granite counters, and a custom barrel-vaulted cedar ceiling speak to the level of detail in this home. There are 2 additional bedrooms on the main level, a large bonus room & 3 additional sleeping areas, plus a dry sauna on the lower level. Also a Multi-car garage/workshop. **Kini515.info**



WALEA GOLF ESTATES FINEST VIEWS

15,917 SQFT LAND | 3BR/3BA | MLS# 380512 | \$4,925,000 | Wailea

Enjoy the expansive panoramic ocean views across the Islands of Kaho'olawe, Molokini, Lanai, and the West Maui Mountains from this immaculate Wailea Golf Estates property. Painterly year-round sunsets remind us of nature's spectacular gifts! This residence has been consciously renovated and meticulously maintained. Walls were re-positioned to bring harmony and balance; creating that exquisite, indoor/outdoor Maui lifestyle. **Waakaula.info**



DIRECT OCEANFRONT REVERED HALAMA ST.

2,360 SQFT | 4BR/3BA | MLS# 379963 | \$3,995,000 | Kihei

There are natural slate stone floors, light-filled windows in every direction, sliding glass walls that disappear & create a seamless indoor/outdoor Maui living experience. The living, dining, & kitchen area mesh with the open pool lanai overlooking stunning ocean vistas. The master suite offers panoramic views from Kaho'olawe & Molokini, across the Island of Lanai, Ma'alaea Bay & the West Maui Mountains. **Halama1688.info**



Kenneth M. "Ken" Hayo

PRINCIPAL BROKER-OWNER | RB15529
Direct: 808.283.8435
Ken@MauiRealEstateAdvisors.com



Year after Year... Ranked Amongst Top 5 Maui Realtors - Top 100 Hawaii Realtor Hall of Fame Hawaii Business Journal 2006-2018
50+ years of Successfully Representing Buyer & Seller Maui Real Estate Transactions Totaling Over \$625,000,000
Search All Maui Properties at www.MauiRealEstateAdvisors.com

Robert H. "Robbie" Dein

BROKER-OWNER, ABR, CRS, RSPS | RB18398
Direct: 808.250.3564
Robbie@MauiRealEstateAdvisors.com





ONOMEA BAY
ESTATES

5,910 SQFT | 4BR/4BA | \$5,790,000
MLS# 619534 | South Hilo

This luxurious estate in Onomea features snow-capped Mauna Kea views from the front entry and Pacific Ocean views from the expansive back lanai. Created by renowned architect, Mark Matsumoto of M Squared Design, this home weds elegant design with craftsmanship. Unique features of this architectural masterpiece include gorgeous rock fireplaces, a 1,032 sq.ft kitchen, birch cabinetry, ocean view home office, exquisite oriental chandeliers, Australian koa flooring, a Mediterranean-inspired archway, and custom bar off the billiard area. The sprawling terrace offers panoramic ocean views from the master suite to the guest suite.



Lidia Maylath
李 笛 (R)S
License Number: 74872
Clark Realty, Locations Company
Wechat ID: lidiamaylath
(808) 896-3554
lmaylath@gmail.com





BLACK SAND BEACH #29

4,827 SQFT | 5BR/5.2BA | MLS#624390
\$6,850,000

Big Island Mauna Lani Resort

- Panoramic views over 12th South Fairway.
- Extensive no expense spared remodel including custom furnishings and chefs kitchen.
- Manicured lawns with BBQ, pool, spa and waterfall.
- Three car garage that can accommodate a boat.
- Constructed with the highest quality materials, this home offers Hawaii living at its best.



HUALALAI HILLSIDE VILLAS H3101

2,087 SQFT | 3BR/2.5BA | MLS# 617952
\$3,650,000

Big Island Hualalai Resort

- Superb white water, ocean and Maui Island views.
- Newly renovated, Koa cabinets, garden shower and additional powder room.
- Large entertaining lanai and serene island garden.
- Sold fully furnished with golf cart, featuring an enclosed garage with storage space and room for car and cart.
- Central to all Hualalai Resort amenities.



72-127 PUUKOLE STREET

4,477 SQFT | 5BR/6.5BA | MLS#624430
\$6,980,000

Big Island Hualalai Resort

- Southwest facing located on the 12th fairway of the Ke'olu Member Only Golf Course.
- Spacious and extremely private residence with an estate feel located at the end of a quiet cul-de-sac.
- Immaculate home beautifully furnished by Gina Wilman.
- Great outdoor entertaining area with BBQ area and infinity pool and spa.



MAUNA LANI REALTY

Live the Aloha Hawai'i Life

Yvonne Khouri-Morgan

RB, Principal Broker
Luxury Kohala Coast Resorts
808.937.4466

Yvonne@alohalife.net
www.HawaiiResortLuxuryHomes.com
www.maunalanirealty.com





ZAK HALE #4
AT KOHANAIKI

4BR/4.5BA | MLS# 626117
\$4,495,000 | Kohanaiki

Zak Hale #4 has it all, location, view, privacy and all the upgrades! This 4 Bedroom, 4 and ½ Bath Hale opens to magnificent views of the members only Kohanaiki Golf Club with the Pacific Ocean as a back drop and Maui in the distance. The home was designed by renowned Architect, Shay Zak of the San Francisco firm of Zak Architecture; interior design is by Barclay and Butera Interiors, Honolulu. Offered Fully Furnished including 2 Golf Carts. The Kohanaiki Club is a private equity club and membership is by invitation only to Kohanaiki Property Owners



Joni J. Metzler
(R) B
Metzler Realty
808.640.6832
Joni@MetzlerRealty.com
www.MetzlerRealty.com





HALE MAI'A #6 AT KOHANAIKI

4BR/4.5BA | MLS# 625505
\$3,495,000 | Kohanaiki

Hale Mai'a #6, set in a prime location overlooking the 9th & 18th fairways of the Kohanaiki Golf Club, benefits from spectacular sunset and ocean views and is within walking distance of the key amenities of the Kohanaiki Club. Designed by Sunnland Architects, the Hale has 3 bedrooms, 3 and ½ baths in the main house and a separate Guest Hale with 1 bedroom, 1 bath, and a private swimming pool and spa. Each Hale Mai'a has a private enclosed garage with storage closet and space for a large luxury automobile and golf cart.

METZLER
REALTY



Joni J. Metzler
(R) B

Metzler Realty
808.640.6832

Joni@MetzlerRealty.com
www.MetzlerRealty.com





THE BLUFFS AT MAUNA KEA RESORT 8,094 SQFT | 5BR/5.5BA | MLS# 611774 | \$7,250,000 | Mauna Kea Resort

Price Reduced 50% from original offering price! Deal Seekers come! Walk to both beaches. 5BR, 5.5BA. Private 2BR guest suite. Library, gym, bar, billiards, office & more.



PAUOA BEACH AT MAUNA LANI 2,700 SQFT | 3BR/3.5BA | MLS# 617378 | \$3,695,000 | Mauna Lani Resort

3 Bedroom 3.5 Bath. Gated oceanfront community between Mauna Lani Bay Hotel and the Fairmont Orchid. Fabulous oceanfront beach club with workout facilities! This home is the much-desired “Pod-style” living centered around lush landscaping and pool and spa. The interior has been totally upgraded. Please take your own personal 3D tour for best view <http://bit.ly/pauoa7>



Eileen Lacerte
REALTOR® Broker/Co-Owner
808.989.1862
Eileen@HawaiiBeachGolf.com





BEST OF KONA HILLS ESTATES

3,601 SQFT | 1 AC | 4BR/4BA

MLS# 621968 | \$1,525,000

Kailua-Kona

Impressive ocean views and spectacular sunsets! Ambiance captivating, impeccable style and accents with home furnishings included in the sale. Features well appointed great room with 2 living areas and fireplace, spacious kitchen with dining, 3 bedrooms, office, plus attached studio. 2nd floor master suite vaulted ceilings and private lanai. Exterior 1,668sf lanai and dining area, fire pit, custom pool. Tiled 3 bay garage. Tropically landscaped with mature fruit trees and great lawn. This home radiates warmth of a Hawaiian oasis.



Renée H. Kraft

Realtor RS-51893

Hawaii Beach and Golf Properties

Mobile: 808.345.2108

Email: renee@SearchHawaiiProperty.com

www.HawaiiBeachGolf.com



YOUR SANCTUARY ON THE KONA COAST



HOME HAPPENS HERE.

Nestled on the idyllic Kona coastline of Hawai'i Island, the exclusive community of Kohanaiki features a 67,000 sq.ft. private clubhouse & spa, intimate beach club, organic community farm and gourmet dining, all within 450 acres of oceanfront luxury estates. The distinguished 'Alani Residences are a collection of three and four bedroom turn-key homes along the 7th and 8th fairway of the Rees Jones 18-hole championship golf course. Designed by renowned architectural firm Glazier Le, these homes showcase the natural beauty of the Big Island with seamless indoor-outdoor living spaces, as well as stunning views of the Kona Coast, nearby mountain ranges and striking sunsets. **From \$2.5 Million.**

Access to and use of the golf course and other private amenities at Kohanaiki Club is available only to members of the Kohanaiki Club and are subject to the payment of additional fees. Membership to the Kohanaiki Club is by invitation only and is not included with a purchase of a property. No representation or warranty is made regarding whether a purchaser will qualify for such membership. Obtain the Property Report or its equivalent required by Federal and State law and read it before signing anything. No federal or state agency has judged the merits or value, if any, of the property shown in this brochure. WARNING: THE CALIFORNIA DEPARTMENT OF REAL ESTATE HAS NOT INSPECTED, EXAMINED, OR QUALIFIED THIS OFFERING.



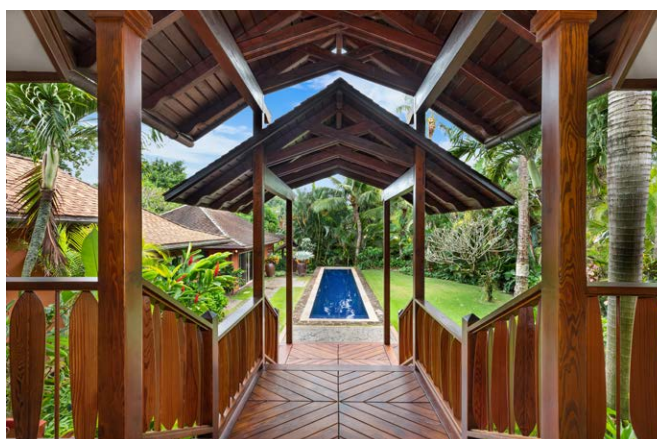


KOHANAIKI

Call for your private tour
(888) 406-1256 | kohanaiki.com/alani



A STUDY IN SYMMETRY.
SEE OPPOSITE PAGE



61-469 KAM HWY

6,335 SQFT | 29,164 SQFT LAND
5BR/5.5BA | MLS# 201907241
\$6,800,000 | Haleiwa

Directly fronting one of Hawaii's classic surf spots, Chuns reef, this North Shore sandy beachfront estate is one of the finest on the island. Incredible value priced well below replacement cost of the land + improvements! On one of the largest beachfront lots on Oahu's North Shore, sheltered by a large reef point, sits this ultra custom, South Pacific Design Group curated retreat with an expansive main residence, chic detached guest house, lap pool, detached full gym with bathroom, and 14 person jacuzzi overlooking the waves. This is a surfer's dream with views of 7 different surf breaks. Gated and uber private, with over 6,300 ft.² of improvements on 29,164 sq ft of land and 99' of beach frontage, this is truly a dream estate and an unbelievable value with Seller financing available.



GLOBAL
LUXURY



www.ChunsReef.com

⬆ Video of this estate ⬆

Orion Barels

Realtor Associate

BS Economics

808.228.7195

www.CoastalOahu.com

orion@coastaloahu.com

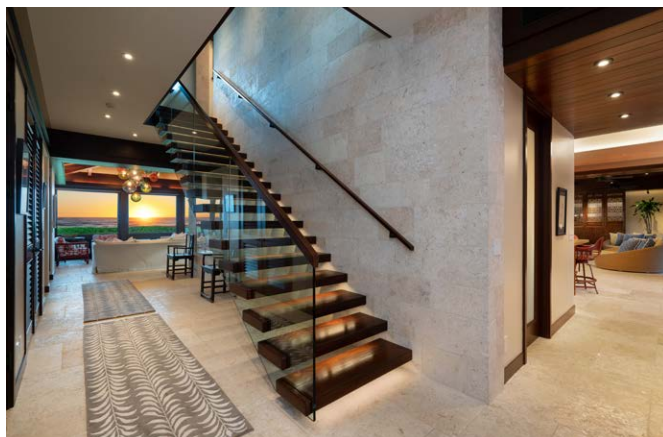




KAILUA BEACHFRONT

11,353 SQFT | .699AC | 7BR/9.2BA
MLS# 201904175 | \$19,800,000
Kailua

One of Hawaii's Finest Beachfront Estates. Designed by award-winning Gast Architects of San Francisco this home has received the GOLD certification from LEED. Built with traditional Hawaiian roof forms this home blends in and stands out on one of the world's most famous beaches. This property has integrated sustainability and smart-home features including: energy-efficient lighting, audio/media, whole home water filtration, climate controlled pantry, heated pool, security, pv+ solar, elevator, backup generator with ust, etc. Privately gated with 125 feet of beach frontage this estate affords all the amenities expected from a luxury resort.



Carvill

Sotheby's

INTERNATIONAL REALTY

Your best life begins with a home that inspires you



TWO NEW CUSTOM HOMES ON KAILUA BEACH

Nothing like this on Oahu. Two custom homes just completed on Kailua beach. Both properties feature spacious yards and large setbacks which preserves view planes, creates privacy, and conforms well with neighboring properties. With two unique floor plans and distinctly different finish details these homes located on one of Beachsides finest streets offers buyers a rare opportunity.

24 Kaiholu Place (above)
17,525 SQFT Land | 5,017 SQFT
Living | 4BR/4.5BA | 1 Detached Rec
Room | MLS# 201907461

22 Kaiholu Place (left)
15,345 SQFT Land | 4,841 SQFT
Living | 4BR/5.5BA | 1 Detached Rec
Room | MLS# 201907537

Price: \$9,390,000 each

Scott Carvill

Principal Broker
808.216.0089
scott@carvillsir.com
carvillsir.com





4350 HALUPA STREET

2,119 SQFT | 6,874 SQFT LAND
4BR/3BA | \$1,350,800
MLS# 201908068 | Honolulu

Ossipoff, an exclusive auspicious design in an uncommon location with distinctive architectural features. Through the private redwood gates one finds a friendly, warm, organic surprise. Along the rock garden, an extended pergola connects the garage to the understated, airy, livable home—freshly redesigned in 1988. Breathe in the fresh heated spa water pouring into the lap pool as the views overtake your eyes. Natural materials, built-in cabinets, hardwood flooring, vaulted wood ceilings, and window louvers surround the home for air to circulate. Relax in the mature backyard with extensive landscape lighting by the outdoor fireplace. Sensitive to the earth with a careful respect for topography, a life of its own this home truly has. “You will like it when you see it,” Vladimir Ossipoff.



BRAND NEW | DIAMOND HEAD



DESIGN
CONSTRUCTION
ARCHITECTURE
INTERIORS



New Diamond Head Oceanview Luxury Custom Home to be built by Honolulu's leading custom builder, Pyramid Premier Properties. This 4 bedroom home will feature 2 master suites, 5 full baths, and 2 half baths. East facing ocean views from virtually every room with an infinity spa and large pool. Completion 2020. Call for pricing.
WWW.506HAKAKA.COM



Pyramid Premier Properties | JTG LLC
4614 Kilauea Avenue, Suite 205
Honolulu, HI 96816
www.PyramidHawaii.com
Tim@PyramidHawaii.com

OCEANVIEW | LUXURY CUSTOM HOME



Patricia Choi
R, RB-11824
808.734.7711
Choi.HawaiiLife.com
Pat@Choi-Realty.com



Victoria NV Gutierrez
RA, RS-75646
808.679.1678
Choi.HawaiiLife.com
nnv5555@gmail.com

THE
CHOI
GROUP



HAWAII LIFE
REAL ESTATE BROKERS

CHRISTIE'S
INTERNATIONAL REAL ESTATE



M **MONTAGE
RESIDENCES**

BEVERLY HILLS | DEER VALLEY | KAPALUA BAY | LAGUNA BEACH | LOS CABOS
PALMETTO BLUFF | HEALDSBURG (Opening in 2020) | BIG SKY (Opening in 2021)



Montage Residences Kapalua Bay is exclusively listed by PowerPlay Destination Properties (Hawaii), Inc. RB20039

This does not constitute an offer to sell or a solicitation of an offer to buy a unit. Nor is it an offering or solicitation of sale in any jurisdiction where the development is not registered in accordance with applicable law or where such offering or solicitation would otherwise be prohibited by law. Obtain all disclosure documents required by applicable laws and read them carefully. The resort project described herein (the "Project") and the residential units located within the Project (the "Residential Units") are not owned, developed, or sold by Montage Hotels & Resorts, LLC, its affiliates or their respective licensors (collectively, "Montage") and Montage does not use the Montage brand name and certain Montage trademarks (collectively, the "Operator Trademarks") in connection with the sales and marketing of the Residential Units in the Project under a limited, non-exclusive, non-transferable and non-sublicensable license from Montage. The foregoing license may be terminated or may expire without renewal, in which case the Project and the Residential Units may be operated by a different operator.



M
MONTAGE
RESIDENCES
KAPALUA BAY

THE SPIRIT OF HAWAII *Lives at Montage.*

This beloved place, a natural paradise of stunning beaches and turquoise seas awaits with unending resort pleasures and memorable experiences. A setting of balance and harmony allowing you to savor warm hospitality, personalized service, and the celebrated Montage lifestyle. Here is your Maui dream home in a perfect seaside locale. A collection of fully-furnished residences that represent the final offering at Montage Kapalua Bay.

*Starting from under \$3 million.
Schedule your private showing.*

(808) 662-6551
MontageResidencesKapaluaBay.com
ONE BAY DRIVE, LAHAINA, HI 96761



A CORNER ROOM WITH A VIEW.
SEE PAGE 8

Luxury is an Experience



ELITE
PACIFIC PROPERTIES

ELITE
PACIFIC PROPERTIES

Brokerage • Vacation Rentals • Property Management • Estate Management

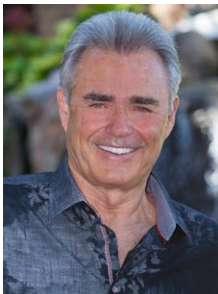
Oahu • Maui • Big Island • Kauai

elitepacific.com

49 KEAHILELE PLACE



Exquisite must-see custom home with AWESOME three island ocean view in the gated Lanikeha subdivision. Architecture by Rick Ryniak, built by a premier Westside builder as their personal residence. Great room with large pocket doors for indoor/outdoor living opens onto large very private lanai. Amenities include: 4 BR/3.5 BA, large



Robert R. Myers
REALTOR (S), SRS
Cell: 808.283.3067 | Toll-Free: 888.781.3548
Robert@mauihomesales.com
www.mauihomesales.com



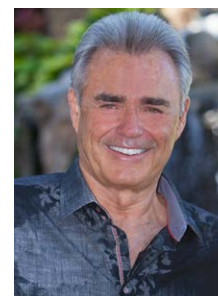


MAUI - LAHAINA

3 car garage with storage, upgraded SubZero/Wolf/Bosch appliances, Travertine and Brazilian Teak floors, Heated salt-water lap pool, ½ acre+ lot, Solar hot water, 10 Kw PV system with net metering, LED lighting throughout, Sapele doors and trim, Cedar ceilings, Walnut cabinets, Granite and Onyx countertops. \$4,300,000

For all the Maui listings check out my website:
www.MauiHomeSales.com
 Including Interactive Maps of Kaanapali, Kapalua and Wailea

Robert R. Myers
 REALTOR (S), SRS
 Cell: 808.283.3067 | Toll-Free: 888.781.3548
 Robert@mauihomesales.com
www.mauihomesales.com



ELITE
 PACIFIC PROPERTIES

Luxury Experience with Aloha Spirit



LuxuryHomeMagazine.com

KAUAI'S FINEST SOUTHSHORE ESTATE PROPERTY



SOUTHSHORE ESTATE: This stunning Kauai ocean view compound offers the finest in privacy, luxury, and lifestyle. This gated estate includes a 5-bdrm + office main residence and 1-bdrm guest house on 3 acres complete with pool and orchard. \$5.295M

KAUAI
KALAHEO



Hannah Sirois
REALTOR (B), Partner
808.639.2367
Hannah@KauaiHP.com
www.KauaiHP.com



KAUAI'S FAMOUS SANDY BEACH HOUSE



SANDY BEACH HOUSE: This irreplaceable 3-bdrm beachfront vacation rental with pool, spa, and beach access affords boundless views of the Poipu Beach coastline. Fresh, spacious interiors with seaside lanai complete this ultimate island retreat. \$7.50M

KAUAI
POIPU



Hannah Sirois
REALTOR (B), Partner
808.639.2367
Hannah@KauaiHP.com
www.KauaiHP.com



Luxury Experience with Aloha Spirit



LuxuryHomeMagazine.com

1965 KALANIANA'OLE STREET



Rare - Gated Bayfront estate with privately owned dock! Open concept floor plan, vaulted ceilings and large open lanai allows effortless all season entertaining. Separate guest suite above the oversize three car garage. This is Hawaii at its best! MLS#201825646

OAHU
Kaneohe



Thomas Wilson
REALTOR-BROKER
808.772.0790
thomaswilsonre@gmail.com
www.homehunterhawaii.com



SPECTACULAR PANORAMIC VIEWS



Enjoy 180-degree unobstructed views from Diamond Head to Koko Head via floor-to-ceiling windows and glass sliding doors. Located in a private gated community, Hawaii Loa Ridge, this home is set back from the street with a hidden driveway. MLS# 201902965 | \$3,700,000 | See video at: <http://bit.ly/415Maono>

Gretchen B. Duplanty

REALTOR

Duplanty, Ltd.

RB-08740

808.372.0480

Gretchen.Duplanty@gmail.com

Jeffrey M. Fox

(R) CLHMS, CRB, CRS

Elite Pacific Properties

RB-17230

808.292.5333

Jeffrey.Fox@ElitePacific.com



**OAHU
HAWAII LOA RIDGE**

ELITE
PACIFIC PROPERTIES

Luxury Experience with Aloha Spirit



LuxuryHomeMagazine.com

ICONIC BEACHFRONT ESTATE IN MOKULEIA



68-011 Laau Paina Pl. Amazing 5 Bed 6 Bath luxury beachfront estate located in Mokuleia. **OAHU**
Spacious and open floor plan with stunning ocean and mountain views throughout. MLS# 201827393 | \$3,150,000 **MOKULEIA**

PARADISE FOUND IN KAIMALINO



OAHU - KAILUA
Enjoy the lifestyle you've been looking for in this beautifully upgraded 4 Bedroom
4 Bath home, located in the premier oceanfront neighborhood of Kaimalino.
MLS# 201906979 | \$1,885,000

MOKULEIA BEACH COLONY



OAHU - MOKULEIA
Enjoy Resort-like condo living on a private 6-acre oceanfront
community, just steps to the beach. Call for more details.
MLS# 201905162



152 N. KALAHEO AVE



OAHU - KAILUA

Bright and Beautiful with a sandy trail to the beach just steps away. Dual paned, energy-efficient windows throughout the house keep it cool. Ohia wood floors and newly renovated master bath. Professionally landscaped with mango, avocado, and banana trees, fishpond, LED lights, and inground irrigation system.

212A LUIKA PL



OAHU - LANIKAI

Enjoy unobstructed views and unique privacy from every room of this tree house-like home perched above the hills of Lanikai. 1+ acre of private gardens and easy access to the outdoor Lanikai lifestyle.

1508 MOKULUA DRIVE, LANIKAI



Magnificence on Mokulua! As the gate opens luxury prevails...fountains, circular driveway and an entrance fit for a King. This 27,000 square foot lot includes 76 linear feet of beachfront with a private staircase and guest home. Offered at \$7,450,000

OAHU KAILUA



Alesia Barnes

Realtor-Broker, CRS

RB-22312

808.397.7928

Alesia@BarnesHawaii.com

www.BarnesHawaii.com



Luxury Experience with Aloha Spirit



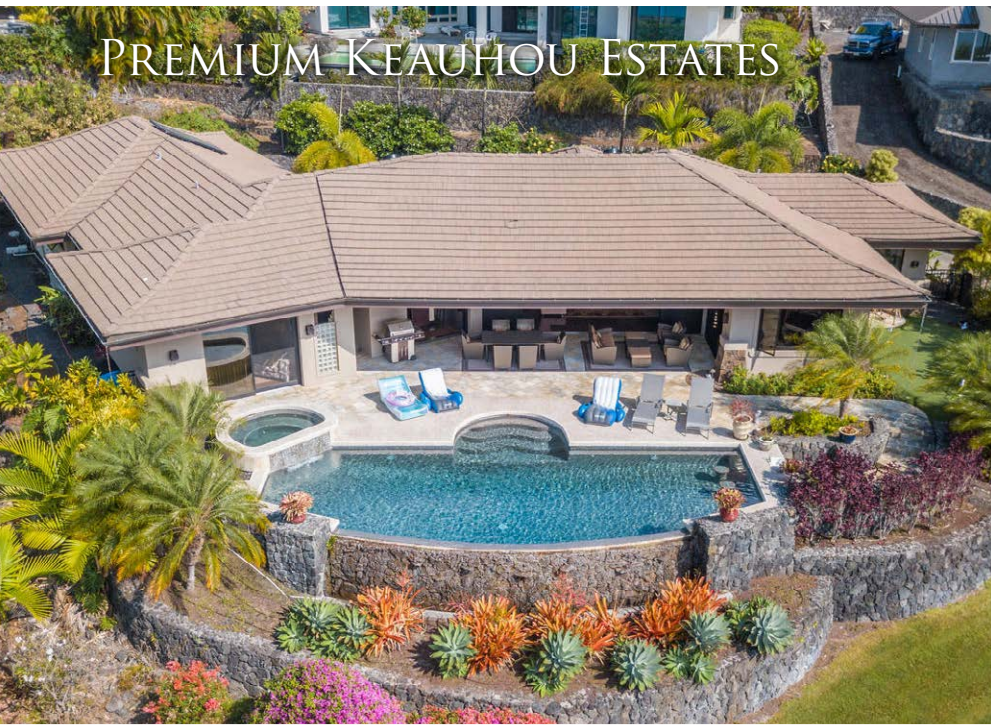
LuxuryHomeMagazine.com

ISLAND LUXURY AT HOKULI'A



Situated on the 14th hole of the Jack Nicklaus Signature golf course of the Club at Hokuli'a, this stunning home captures Hawaiian indoor/ outdoor living with an open floor plan & pocketing doors opening to ocean, mountain, and golf course views. MLS 625166 | \$5,995,000

**BIG ISLAND
HOKULI'A**



PREMIUM KEAUHOU ESTATES

BIG ISLAND - KEAUHOU ESTATES

This single-level home offers spectacular views of Keauhou Bay, and stunning year-round sunsets. An infinity-edge pool, spa, waterfall, and swim-up bar offer great outdoor living. MLS 625508 | \$1,699,000



KEAUHOU ESTATES GEM

BIG ISLAND - KEAUHOU ESTATES

Recently updated with the finest finishes, this custom home features year-round sunset views from almost every room in the house. 3,500+ sq.ft. | 4BR/3.5BA | MLS 625575 | \$1,950,000



Philip Fukushima
Broker/Salesperson RB-18811
808.989.3200
Philip@elitepacific.com
Philip.AllBigIslandProperty.com

Brian Axelrod
RS-77132
808.443.7767
brianaxelrod@elitepacific.com
www.brianaxelrod.com



HOKULI'A MASTERPIECE



This rare custom home features 180-degree panoramic ocean/golf course views. 5,053 sq.ft. of interior space and 2,300 sq.ft. of exterior lanais. Enjoy Hawaii's ideal climate, indoor-outdoor lifestyle & stunning daily sunsets. 4BR/4.5BA | MLS 621401 | \$4,450,000

**BIG ISLAND
HOKULI'A**

NEW CUSTOM HOME AT HOKULI'A



This custom, plantation-style home is in the private and exclusive community of Hokuli'a. Panoramic ocean, shoreline & golf course views. The free-flowing floor plan is perfect for enjoying Hawaii's year-round ideal climate. 3BR/3BA | 2,750 sq.ft. interior | 1,250 sq.ft. covered lanai | MLS 624324 | \$3,250,000

**BIG ISLAND
HOKULI'A**



Brian Axelrod
RS-77132
808.443.7767
brianaxelrod@elitepacific.com
www.brianaxelrod.com

Philip Fukushima
Broker/Salesperson RB-18811
808.989.3200
Philip@elitepacific.com
Philip.AllBigislandProperty.com



ELITE
PACIFIC PROPERTIES

Luxury Experience with Aloha Spirit





This Mediterranean-style estate on 3 acres in “dry side Waimea” features panoramic ocean and mountain views. A dramatic entry, a fireplace, koa wood flooring and doors, soaring ceilings, expansive spaces, and elegant finishes create an atmosphere of luxury. Every neighbor is over an acre away, and a quick 10-minute drive leads to white-sand beaches, fabulous golf, and Waimea schools.

BIG ISLAND
KAMUELA



Karen Ferrara
MBA, REALTOR, RS-72752
karen.ferrara@elitepacific.com
808.883.0094
karen-ferrara.com

1965 KALANIANA'OLE STREET



Resort living awaits you in your own backyard. Rare opportunity to own primetime almost oceanfront property in Keaukaha. Sitting a couple miles outside of Hilo, the property is under 15 minutes from Hilo Medical Center and the University of Hawaii, Hilo. MLS 622903 | \$1,249,000

**BIG ISLAND
HILO**



Ron Rigg
Realtor (B), CRS
808.936.1962
riggaloha@gmail.com
R(B)15044



Jocelyne S. Twigg-Smith
Realtor (S)
808.238.4937
jocelyne@elitepacific.com
R(S)74500



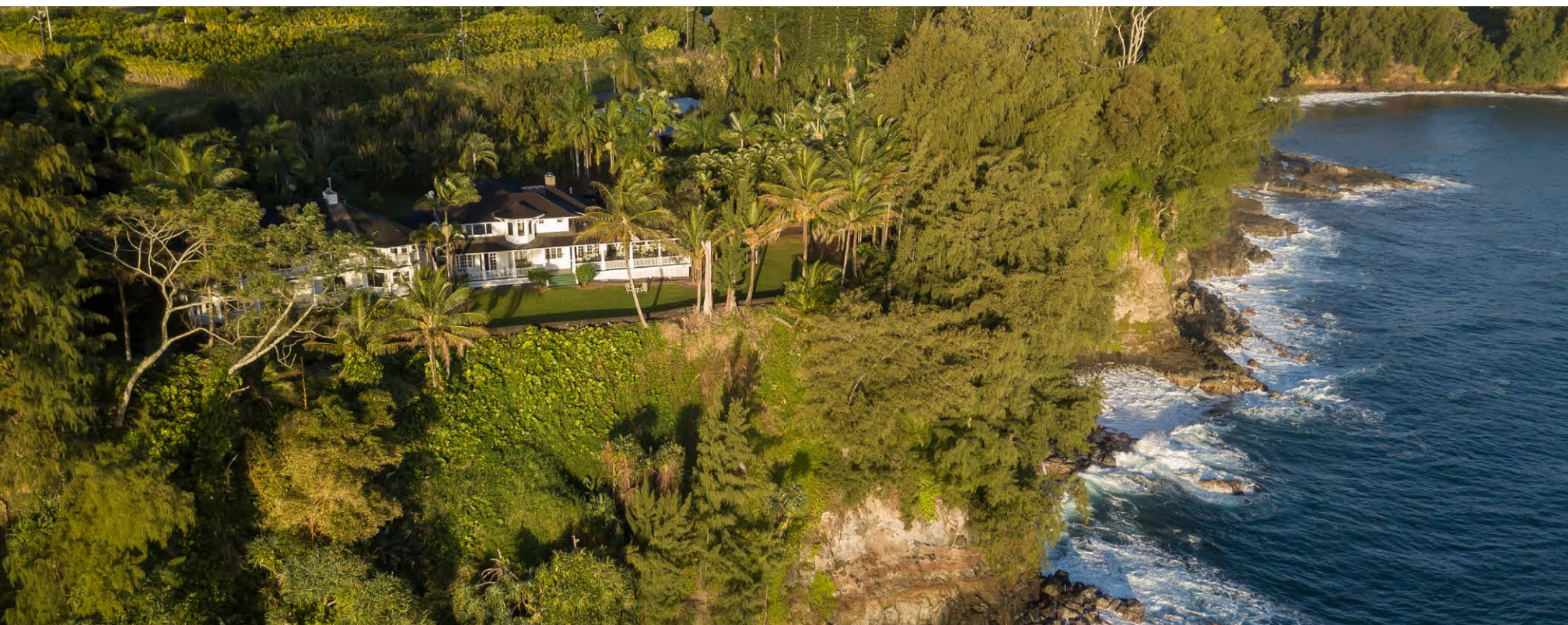
ELITE
PACIFIC PROPERTIES

Luxury Experience with Aloha Spirit



LuxuryHomeMagazine.com

RARE OCEANFRONT ESTATE IN HONOLULU



Sitting atop a 100 ft. cliff is this 12BR/10.5BA, 7200 sqft home on 3.40 acres. Huge, oceanfront verandas for gatherings. Currently operating as the Palms Cliff House B&B. Sellers will consider sale of business with an acceptable offer on the real estate. MLS 623171 | \$3,100,000

**BIG ISLAND
HONOLULU**



Rebecca Keliioomalau

Real Estate Broker
Statewide and Big Island Top Producer
RebeccaK@ElitePacific.com
Mobile: 808.895.1156
TheRKCollection.com



THE REBECCA K. COLLECTION
Elite Pacific Properties

UNPARALLELED REPRESENTATION.
THE FINEST HAWAII PROPERTIES

27-175 KOAE ROAD



Oceanfront perfection in Onomea. 15.6 acres just north of Hilo with an upscale plantation style home. 2 bedroom, 2 bath plus 1 bedroom, 1 bath guest house. Exceptional location and views! MLS 626505 | \$2,400,000

BIG ISLAND
PAPAIIKOU



Meg Saunders
R(B) 19200
808.895.3147
Meg@ElitePacific.com
Meg.Hawaii.ElitePacific.com



Donna Duryea
R(S) 62459, CRS, GRI, ABR
808.987.4511
Donna@DonnaDuryea.com
DonnaDuryea.com



ELITE
PACIFIC PROPERTIES

Luxury Experience with Aloha Spirit



LuxuryHomeMagazine.com

A PRIVATE PARADISE



Sophisticated 3 bed/2.5 bath w/ pool & ocean views **BIG ISLAND
KAILUA KONA**

KEAUHOU ESTATES



BIG ISLAND - KAILUA KONA
Bright & cheery 2 bed/2.5 bath w/ 3 car garage

IDEAL ELEVATION



BIG ISLAND - KAILUA KONA
4 bed/4 bath on over 1 acre w/ expansive coastal views



Kelly Shaw
RB-21516
ABR, e-Pro, CRS, GRI, CLHMS
808.960.4636
Kelly.Shaw@ElitePacific.com
www.elitepacific.com/agent/kelly-shaw/



**WELLS
FARGO**

**HOME
MORTGAGE**

Share joyful moments in the home you deserve

Have your eye on a new home? Buying a vacation home or investment property? Or maybe you're looking to refinance your present home.

Whatever your home financing needs may be, you've come to the right place.

Financing for your place

Whether you're buying a new home or refinancing your current one — we understand everyone's needs are different.

That's why we have different home financing options and a wide range of loan amounts, including those for homes up to \$6 million or higher. So chances are, we have a jumbo loan to meet your needs:

- Do you want peace of mind about rising rates?
- Are you wondering about customer rate discounts?
- Do you need a low down payment option?
- Are you interested in buying with cash?
- Do you want to lower your payments?

If you're looking for answers, let's talk about your situation. We are here to help you find the home financing you need and the distinguishing benefits you deserve.

To learn more about our jumbo home financing options, contact us today.



Hawai'i

Kona Sales Office

75-5722 Kuakini Hwy., Ste. 105
Kona, HI 96740
808-329-5926



Maui

Wailea Sales Office

Private Mortgage Banking
Wailea Gateway Center
34 Wailea Gateway Place, Ste. A-205
Kihei, HI 96753
808-891-6075



Oahu

Honolulu Sales Office

1357 Kapiolani Blvd., Ste. 910
Honolulu, HI 96814
808-946-8832

Information is accurate as of date of printing and is subject to change without notice.

Wells Fargo Home Mortgage is a division of Wells Fargo Bank, N.A. © 2017 Wells Fargo Bank, N.A. All rights reserved. NMLSR ID 399801. AS4786684 Expires 04/2019





Located on the shoreline of Honu Lagoon 2, Beach Villas at Ko Olina is comprised of 247 units in the Beach and Ocean Towers. Each two- or three-bedroom villa includes ocean views, spacious lanais, state-of-the-art kitchens designed by Master Chef Roy Yamaguchi, designer furnishings and access to property amenities featuring waterfalls, koi ponds, lush landscaping, heated lap pool & fitness center. With close proximity to the Ko Olina Golf Course, home of the LPGA LOTTE Championship, Ko Olina Marina, beautiful turquoise lagoons, fine dining restaurants, and miles of walking and running trails, it is a perfect foundation to a carefree lifestyle.

Pure Paradise for a day, a week, a lifetime...

UNIT B-207 • \$1,585,000

3BD • 3BA • 1,690^{SF} TOTAL
1,475^{SF} LIVING AREA • 215^{SF} LANAI

UNIT O-912 • \$1,595,000

2BD • 2BA • 1,642^{SF} TOTAL
1,293^{SF} LIVING AREA • 349^{SF} LANAI

UNIT O-401 • \$1,650,000

3BD • 2.5BA • 1,814^{SF} TOTAL
1,611^{SF} LIVING AREA • 203^{SF} LANAI



Carolyn M. Stone RA
carolyn.stone@koolina.com
Mobile (808) 721-2678
License #RS-44878



Custom Interior & Exterior Functional Art SERVING ALL HAWAIIAN ISLANDS & BEYOND



PLEASE VISIT OUR GALLERY
padilladesigns.com

808 879 0938



THE OFFICIAL KAPALUA EXPERTS *for over 40 years*



KA'ANAPALI COFFEE FARMS - 2950 AINA MAHIAI PL - \$3,100,000 FS
OCEANVIEW • 3 BED • 2 BATH • LIVING: 2,269 SF • DETACHED OHANA
P. DAVID QUANDT, R(S)-55752 - (808) 457-0604
21DAVIDQ@GMAIL.COM



PRICE ADJUSTMENT

PINEAPPLE HILL - 1204 SUMMER RD - \$2,149,500 FS - ON THE GOLF COURSE
GORGEOUS VIEWS • 4 BEDS • 4.5 BATHS • LIVING: 3,704 SF
JOANNE FOXE, R(S)-63115 - (808) 665-3761
(808) 385-2918 • JFOXEX@KAPALUAREALTY.COM

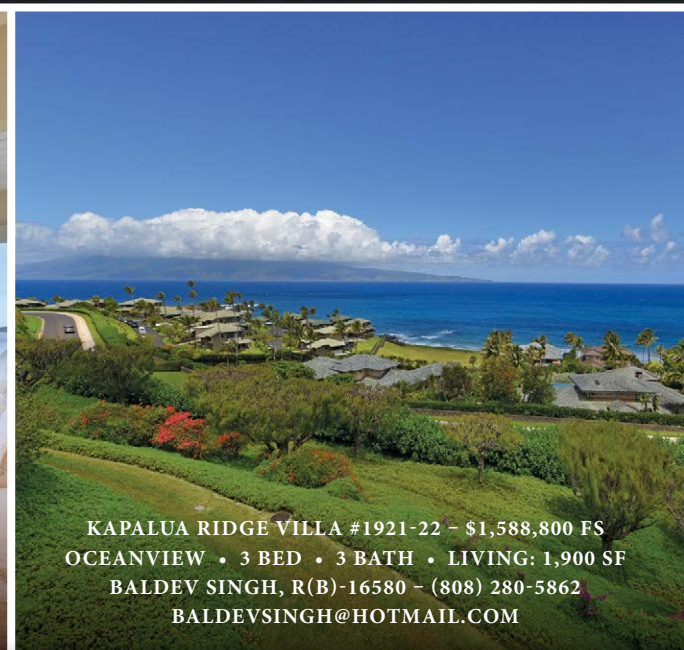


NEW LISTING

KAPALUA GOLF VILLA #19T3 - \$975,000 FS
OCEANVIEW • 2 BED • 2 BATH • LIVING: 1,350 SF
KIMI WITHALM R(S)-26417 - (808) 276-6926
NEKO@MAUI.NET



KAPALUA BAY VILLA #36G5 - \$1,345,000 FS
OCEANVIEW • 1 BED • 2 BATHS • LIVING: 1,277 SF
JEANNINE CARR, R(B)-17472 CRS, ePRO - (808) 276-4806
OCEANFRONTMAUI@AOL.COM



KAPALUA RIDGE VILLA #1921-22 - \$1,588,800 FS
OCEANVIEW • 3 BED • 3 BATH • LIVING: 1,900 SF
BALDEV SINGH, R(B)-16580 - (808) 280-5862
BALDEV.SINGH@HOTMAIL.COM

For 40 years, since the initial development at Kapalua Resort, Kapalua Realty has been the go-to for real estate sales and service.

Our team of real estate professionals has over 100 years of combined real estate experience with their pulse on the latest trends and developments in real estate and lifestyle at Kapalua Resort. Our on-resort presence and strong relationships with resort partners give us the inside edge to all things "Kapalua."

Agents are on duty 365 days a year to serve you and are conveniently located in the heart of Kapalua Resort.



800.545.VIEW (8439) • 808.665.5454 • 700 OFFICE ROAD, KAPALUA RESORT
LIC# 13440 • PARADISE@KAPALUAREALTY.COM • KAPALUAREALTY.COM

WAILEA HIGHLANDS
SOLD PRIOR TO LIST!



Maui

It's A Lifestyle!
it's time to make Maui a part of yours!



Sold On Maui

Videos at: <https://vimeo.com/channels/soldonmaui>



Wailea Realty Corp. A Boutique of Windermere Real Estate
The Shops at Wailea • 3750 Wailea Alanui #B-16 Wailea, Hawaii 96753

Diane K. Pool
REALTOR® (B), ABR
c 808.276.2004



diane@SoldOnMaui.net
#SoldOnMaui





OCEANFRONT GETAWAY PRESENTED BY JOLANTA FRAZIER



THE WAILEA GROUP

LLC

REAL ESTATE SALES AND MARKETING

A LIFESTYLE BEYOND COMPARE...



THEWAILEAGROUP.COM

THE WAILEA GROUP IS A COLLABORATION OF SALES AND MARKETING PROFESSIONALS WITH DEEP RESPECT FOR MAUI'S PAST, PRESENT AND THE FUTURE.

AT YOUR SERVICE:

Addie Heiner R(B) BIC * Barbara Kenrich R(B) * Donna Butterfield R(S) * Gary R. Heiner R(S) * Joanne King R(B)
Jolanta Frazier R(B) * Lucas Woodford R(S) * Martin Hauen-Limkilde R(S) * Nancy Callahan R(B) * Nancy Ulin R(S)
Phylleen P. Jackson R(B) * Scott Nelson R(B) PB * Stephen E. Still R(B) * Walter J. Bissett R(S) * Will McKinney R(S)

MEET US AT:

THE WAILEA GROUP LLC | OCEANFRONT IN WAILEA
3800 WAILEA ALANUI DR., UNIT 1 | WAILEA, MAUI, HAWAII 96753
808.875.6911 | 808.891.4512





Kapalua Private Oceanfront Estate

One of Maui's most secluded oceanfront properties located on a 3.5 acre promontory known as The Alaelae Peninsula. The estate is just a short distance from the heart of Kapalua Resort. As you enter the property through fabulous custom gates, you will be immediately drawn to the feeling of Old Hawaii.



Papohaku Ranchlands Estate

Located on over four lush acres and built in 2008, this architectural residence offers privacy, high-end finishes, and views from one of the most impressive high points on the west end of Molokai. Wake up to sunrise over the eastern mountains of Molokai and see the sun set over Diamond Head on Oahu all from your chair on the large covered lanai.



Kahana Oceanfront Estate

A dramatic oceanfront estate designed to maximize proximity to the ocean's edge, offering views of the Pacific, Molokai and Kahana's Secret Beach. Built to accommodate up to 12 and is offered turnkey.



Maui's Grand Oceanfront Estate

This magnificent Kahana Estate rests on approximately 1/2 acre of prime oceanfront land in West Maui, with over 250 feet of ocean frontage. Perfectly located between Kaanapali and Kapalua, this estate accommodates up to 16 and is offered turnkey.



Mary Anne Fitch

REALTOR(B), RB-15747

808.250.1583 | sold@maui.net | soldmaui.com

HAWAII LIFE
REAL ESTATE BROKERS

CHRISTIE'S
INTERNATIONAL REAL ESTATE



Nam L. Le Viet

REALTOR(S), RS-61810

808.283.9007 | nam@mauisold.com

Hawaii Life is an Exclusive Affiliate of Christie's International Real Estate.
HawaiiLife.com | RB-19928





Secluded Hekili Point Estate

West Maui's Oceanfront sanctuary is peaceful and private with a rare exotic Hawaiian ambience. It's resplendent historical location in Olowalu, home to Hawaiian royalty, is ideally located only five minutes from Lahaina Towne, but feels worlds away. Remote seclusion surrounds you. Tremendous shoreline views include the islands of Kahoolawe and Molokini as well as Lanai and Molokai. Whales can be seen and heard. Ocean access for water sports is just steps away. Olowalu's reef system is truly magnificent—the double reef creates a really unique calm lagoon with coral heads visible during low tide.

This grand estate is comprised of three plantation structures set on 1.34 acres of land with a sprawling ocean lawn, 75-foot pool and spa, tropical gardens and walkways. Designed by Glen Mason, an award-winning architect renowned for cultural heritage preservation incorporated into new construction, includes authentic design features of 1930's Kama'aina architecture—wide verandas, wood floors, spacious rooms with high ceilings, and double-pitched roofs.



The main home contains three master suites, each with its own sitting room, bedroom, bath with shower and tub, private Lanai, Walk-in-closet, laundry and magnificent ocean views. The ocean view Ohana has its own gate-entrance from the driveway, kitchen, master suite, bath and outdoor shower beautifully linked to the main home by a trellised walkway. The third building houses a gym, steam room and an additional suite above. Other phenomenal features include a “real” chef's kitchen, intimate library and media room, a fireplace in the great room and aquatic pond. Fantastic gathering areas abound both inside and out. Perfect for entertaining and enjoying croquet, bocce, kayaking, whale watching, dolphins, turtles, monk seals and more.



Mary Anne Fitch

REALTOR(B), RB-15747

808.250.1583 | sold@maui.net | soldmaui.com

HAWAII LIFE
REAL ESTATE BROKERS

CHRISTIE'S
INTERNATIONAL REAL ESTATE



Nam L. Le Viet

REALTOR(S), RS-61810

808.283.9007 | nam@mauisold.com

Hawaii Life is an Exclusive Affiliate of Christie's International Real Estate.
HawaiiLife.com | RB-19928





Kapalua's Finest with Ocean, Resort & Sunset Views

Perched at the summit of the Plantation Estates Phase II, this single-level estate offers panoramic views of Honolua Ridge, the Kapalua Ritz Carlton resort community and the islands of Molokai and Lanai. Built in 2017 and spaciouly spread across 7,286 square feet of single-level living, this estate offers everything and more! A theater (equipped with a 10' screen), 300+ bottle walk-in wine room, exercise room, home office, infrared sauna, 3-vehicle garage and game room complete with a pool table and fireplace. Indoor-outdoor living is created with the great room's 14' walls with 20' ceiling height and retractable sliding doors throughout the estate.

701 Mokuleia Place, **Kapalua, Maui** | **\$10.5M** | **2.12** acres | **7,286** sqft living | **4BR / 4BA + 3 Half Baths** | **3-Car Garage** | **Pool & Spa** | MLS# 380142



Papaua Estate, Honokeana Cove Ocean Access

30 Papaua Place, **Napili, Maui** | **\$8.5M** | **0.23** acres
3,742 sqft living | **3BR / 3.5BA** | **Offered Furnished**
MLS# 377918



Paradise on the 16th Fairway

704 Mokuleia Place, **Kapalua, Maui** | **\$7.4M** | **2.13** acres
6,174 sqft living | **8BR / 6.5BA** | **2 Pools & 1 Spa** | **Golf Course Frontage, Chipping & Putting Green** | MLS# 382103



Modern Design with Ocean/Golf Course Views

204 Anapuni Loop, **Lahaina, Maui** | **\$4.8M** | **0.94** acres
4,827 sqft living | **4BR / 3BA + 2 Half BA** | **Walk-in Wine Room** | **Pool & Spa** | MLS# 380854



Raymond S.F. Chin

MBA, REALTOR(B), RB-20642

808.344.2677 | Ray@RayChin.com

HAWAII LIFE
REAL ESTATE BROKERS

CHRISTIE'S
INTERNATIONAL REAL ESTATE

RayChin.com
YOUR Time is Now®

Hawaii's Life is an Exclusive Affiliate of Christie's International Real Estate.
HawaiiLife.com | RB-19928





Josh Jerman

REALTOR(B), RB-19728

808.283.2222 | Josh@HawaiiLife.com

Matt Beall

PB, REALTOR(B), RB-17738

808.346.7413 | Matt@HawaiiLife.com

Modern 2 Acre Estate in Makena

This private two-acre estate in Makena complements the natural elements and is connected to the land. There are seven structures spanning across the two acres encompassing a large kitchen and dining area, a master bedroom suite, two private guest suites, a theater room, gym, office, an 'ohana, and a three-car garage. Pathways through ginger, lpe bridges over lava rock stream beds, and lush lawns under verdant tree canopies connect the property's structures for a seamless indoor-outdoor living experience. Includes a 25-meter lap pool, infinity lounge pool, gym, and a fully-lit tennis court.

Makena, Maui | **\$12M** | **2.07** acres | **6,510** sqft living | **4BR / 4.5BA + Ohana** | MLS# 379985



Keawakapu Beach Oceanfront Estate

Located directly on world-renowned Keawakapu Beach, this 1/2 acre property has approximately 95 linear feet of beach frontage. Location and luxury come together in this modern expression of a Hawaiian plantation home. Indoor and outdoor areas blend seamlessly with pocketing doors that open to the oceanfront lawn from the main residence and to the pool courtyard from the cottage. A new state-of-the art Photo Voltaic Solar System by Maui Solar Project and a new Central A/C system combine to minimize expenses and reduce the ecological footprint.

South Maui | **\$15.5M** | **.55** acres | **3,877** sqft living | **5BR / 4BA** | **Beach Access** | MLS# 378401

Josh Jerman

REALTOR(B), RB-19728

808.283.2222 | Josh@HawaiiLife.com

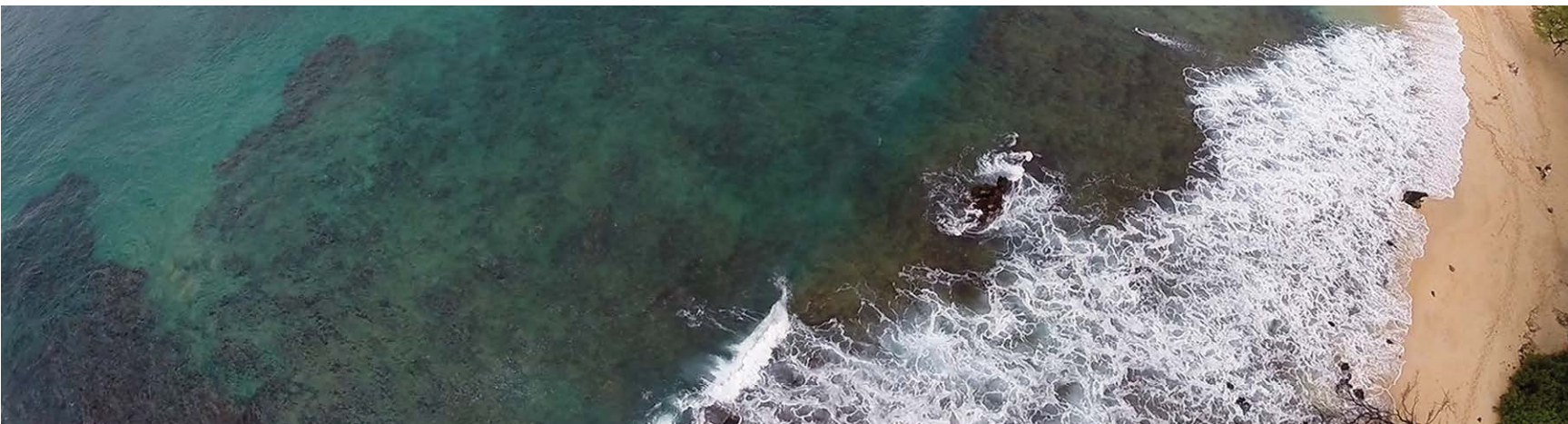
Josh.HawaiiLife.com

HAWAII LIFE
REAL ESTATE BROKERS

CHRISTIE'S
INTERNATIONAL REAL ESTATE

Hawaii's Life is an Exclusive Affiliate of Christie's International Real Estate
HawaiiLife.com | RB-19928





Makena Acreage

Makena, Maui | **\$6.5M** | **2.79** acres | MLS# 378831

Exceptional 2.79 acre estate property across from "Big Beach" in Makena. Utilities to the lot include a 3/4" water meter and underground electricity. You can build one luxury estate or consider subdividing the lot into four 1/2 acre Rural lots. The preliminary subdivision plan includes four lots and four future water meters. With the building site sitting at approximately 48' of elevation there are expansive views of Makena's pristine waters and Haleakala's rolling pastures. 0 Makena Rd is one of the last available parcels in Makena with so many options.

Josh Jerman REALTOR(B), RB-19728
808.283.2222 | Josh@HawaiiLife.com

HAWAI'I LIFE
REAL ESTATE BROKERS

CHRISTIE'S
INTERNATIONAL REAL ESTATE

David W. Richardson REALTOR(B), RB-10780
808.870.9916 | Dave@HawaiiLife.com

Hawai'i Life is an Exclusive Affiliate of Christie's International Real Estate
HawaiiLife.com | RB-19928





Private Garden Estate in Central Maui

Wailuku, Maui | **5.75** acres | **8,032** sqft living | **5BR/5.5BA** | Pool & Spa | Gourmet Kitchen + Outdoor Kitchen | Ocean & Mountain Views | *Call for Pricing*

Gated estate set on a mountain top for ultimate privacy and security with sweeping views of the central isthmus and the north and south shorelines. This vantage point is unmatched by any other on Maui. Open spaces allow trade winds to circulate, projecting eaves keep rain out without closing windows, and the use of clerestory windows brings outside light into the home. Nishikawa Architects was influenced by the iconic work of C.W. Dickey, and this property was the winner of BIA Hawaii's 2016 Grand Award for design excellence. The property embodies the aloha spirit of island lifestyle with maximum privacy. It offers a unique combination of proximity to the airport, hospital and shopping while preserving seclusion. Reached by a winding private road that arrives under the porte-cochere of the main entrance, the unique setting and landscaping of the site itself is reminiscent of a hilltop chateau or private island.

Linda McCormick REALTOR(S), RS-79758
808.359.3227 | LindaMcCormick@HawaiiLife.com

Josh Jerman REALTOR(B), RB-19728
808.283.2222 | Josh@HawaiiLife.com

HAWAI'I LIFE
REAL ESTATE BROKERS

CHRISTIE'S
INTERNATIONAL REAL ESTATE

Hawai'i Life is an Exclusive Affiliate of Christie's International Real Estate
HawaiiLife.com | RB-19928



Maui Luxury Real Estate LLC

MauiRealEstate.NET

Prime Oceanfront Location!

Here is your chance to enjoy expansive ocean views, spectacular sunsets and a front row seat to whale watching in season. This 3 bedroom beach house and detached 2 bedroom cottage with a 400+ square foot storage room offers a variety of living options. The owned photovoltaic system plus solar hot water systems add to the incredible value of this property. \$3.298M



Kai Malu Best Buy

This well-appointed, ocean view, three bedroom, two-and-one-half-bath Wailea Villa w/ large 2 car garage & expanded lanai perfect for entertaining is located on a quiet cul-de-sac. The Gated Kai Malu community offers spectacular amenities including a stunning infinity edge pool and is in close proximity to white sandy beaches, resort activities, shopping and casual and fine dining. \$1.278M



Enticing Custom Wailea Home

Beautiful Ocean views from dawn to dusk with this custom 4,100 sf home offering so much including deeded ocean view easements plus "to live for" chef's kitchen, two huge living rooms, two master suites and 2 more bedrooms, a secluded heated pool & spa and owned photovoltaic system. Come experience perfection. \$2.385M

ANOTHER STATE RECORD SETTING!

They did it again! Clint and Bob Hansen are both being honored again as two of the Top 100 Realtors in the State of Hawaii. If you want to know what they can do for you, email us at Hansens@MauiRealEstate.NET



Oceanview Wailea Kai

Gorgeous home ideally located in Wailea Kai ~ close to Keawakapu Beach! This palatial residence with 4 bedrooms beautifully incorporates the flow of the home into one of the largest yards in the neighborhood. Soothing pool and an ocean view! All Wailea Resort Golf and Tennis Amenities available. **\$1.540M**



Maui Meadows Gem

This spacious 4 bed, 4.5 bath 3,100+ sf home with detached 1 bed, 1 bath cottage features ocean and mountain views with incredible privacy on over ½ an acre! All of this AND owned photovoltaic on the main house and cottage! Currently a successful, permitted B&B. **\$1.675M**

Maui Luxury Real Estate LLC
The Hansen Ohana Real Estate Group
 Certified Luxury Home Marketing Specialist
www.MauiRealEstate.NET
Hansens@MauiRealEstate.NET
 808.280.1650



Clint Hansen, R(B), Donna D. Hansen, R(S), and Bob Hansen, R(PB)



WHO BOUGHT HAWAII PROPERTY IN 2018?

PRESENTED BY TITLE GUARANTY

Despite concerns that US markets, and subsequently, real estate, would soon be experiencing a market correction, Hawaii’s real estate market underwent a decline of only 0.1%, a drop that consisted of just 27 fewer sales. As in past years, buyers from Hawaii and Japan purchased the vast majority of local properties.

US BUYER MARKET: HAWAII DOMINATES

In 2018, 95.4% of all sales in the islands were by domestic buyers, of which 76.1% were buyers from Hawaii. This figure (15,530 sales) represented a 1.8% drop in Hawaii buyers from 2017. By contrast, California’s 1,692 purchases represented 8.3% of the total market and was the next closest domestic buyer demographic, but jumped 6.5% in 2018.

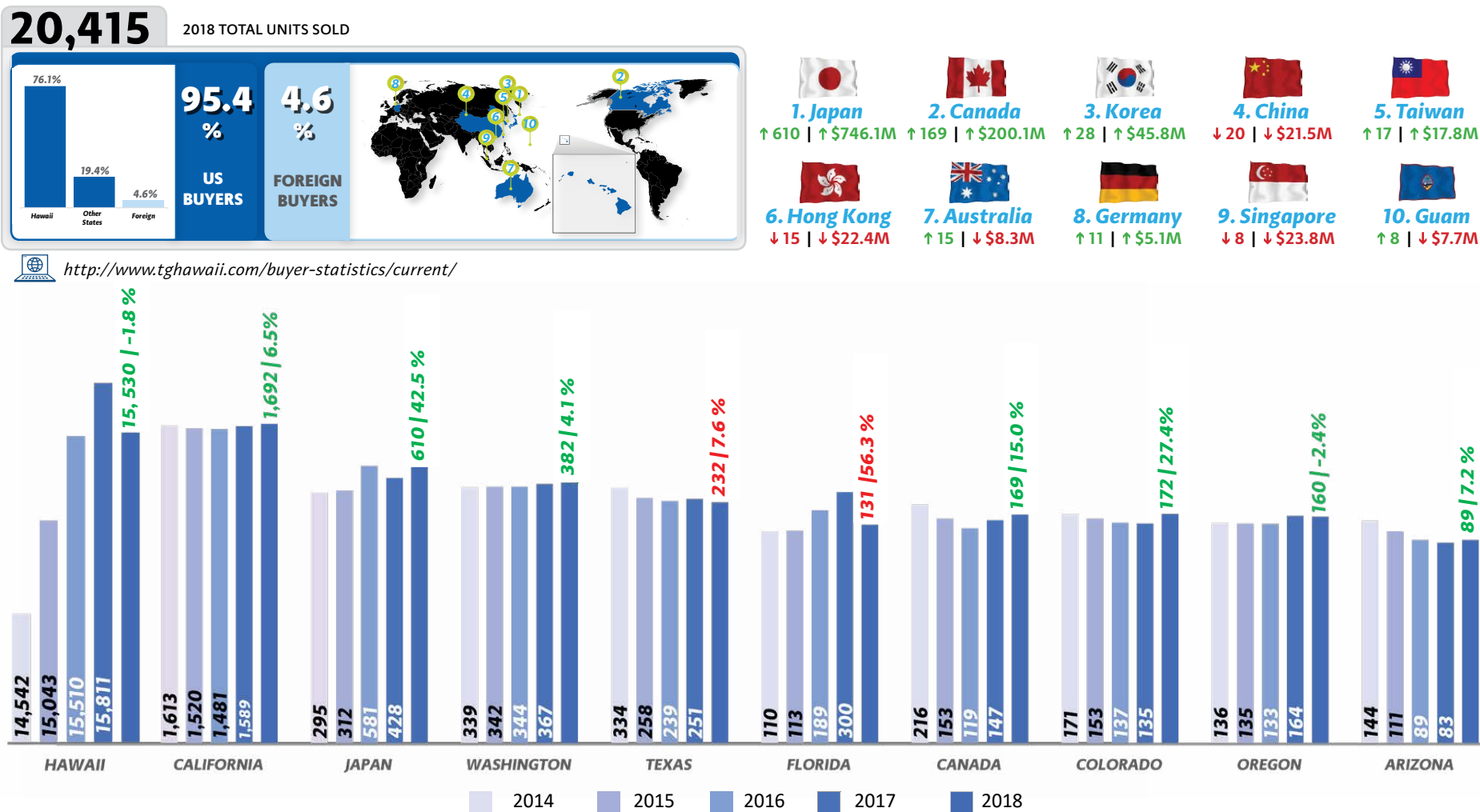
Washington, Texas, Colorado, Oregon, Florida, Nevada, Arizona and New York rounded out the top 10 state buyers.

FOREIGN BUYER MARKET: JAPAN STILL KEY

Japan remained Hawaii’s largest international buyer demographic, comprising 65.7% of all foreign buyers in the islands. From 2017, Japanese buyers underwent a 42.5% increase in purchases, but represented just 3.0% of the overall market.

Canadian buyers jumped 15.0%, purchasing 169 properties (18.2% of all foreign buyer purchases). Korea, China, Taiwan, Hong Kong, Australia, Germany, Singapore and Guam rounded out the top foreign buyer countries. The remainder of purchases made by foreign buyers were from 27 other countries.

HAWAII’S BUYER MARKET TREND: BY THE NUMBERS



TITLE GUARANTY
TITLE & ESCROW SERVICES

Title and Escrow is our business.
Hawaii is our home.
Visit TGHawaii.com



Mauna Lani Point F102

1,555 SQFT | 2BR/2.5BA
\$2,165,000 | Mauna Lani Resort

Oceanfront living in a beautiful setting! This lower level unit in a prime location at the Point has been fully renovated with great attention to detail and delightful custom features. Enjoy a tranquil, private environment open to dramatic views. Unobstructed ocean, fairway, Maui and sunset views year round complete the quality Island living everyone is looking for! All within a gated community with access to all the Resort amenities.



Margery Mayo
 REALTOR® Broker in Charge
 RB 17852
 68-1330 Mauna Lani Drive, Suite 130
 Kohala Coast, HI 96743

www.HapunaRealty.com
margerymayo@margerymayo.com
 808.987.6385



Development Parcel
Uplands at
Mauna Kea Resort

9.4 Acres | Up to 64 units
\$16,500,000 | MLS# 609817

Approved by the resort for 64-condominium units in 7 buildings. This site is offered at \$16,500,000 (\$257,000 per unit). Sold in a graded condition with a water service lateral on Amaui Drive. Every condo unit will offer ocean views, and most will be very dramatic ocean and mountain views along with golf course views. Owners will have access to a brand-new amenity center. Optional Club at Mauna Kea memberships offer access to resort amenities. Hapuna is a happening place with newly renovated and branded Westin Hapuna Beach with a new adult pool, a fitness center and more. This is the perfect time for developing homes in this beloved resort.



Wehilani Subdivision Kailua Kona

4,543 SF | 4BR/5.5BATH | \$2,295,000 | MLS# 622707

Beautiful 4 bedroom, 5.5 bath with a swimming pool on almost 2 acres in the gated community of Wehilani. Meticulously landscaped with producing Kona coffee, many fruit trees and sweeping ocean & sunset views. Three structures with 4 separate entrances create privacy and provide the perfect setting for this property. The main house has a large kitchen with cherry cabinets, granite counters, L-shaped island and stainless appliances. Glass doors in dining & living areas open to the massive lanai with pool/spa ensuring ocean views throughout. The master suite features separate granite vanities with vessel sinks, travertine walk-in shower, large walk-in closet, French doors to lanai & pool and ocean views. A few steps away is a 2-level structure with separate entrances to suites on each floor. Each suite has a bedroom & bath with a private lanai. The 1 bedroom/1 bath, 1400 sf Ohana is positioned on the other side of the main home. Featuring wood floors, full kitchen with granite counters & stainless appliances, travertine bath & walk-in shower. Walls of windows & a large sliding door open to a private lanai and amazing ocean views. No detail has been left undone in this property leaving you with endless possibilities!



Tomoko Matsumoto
REALTOR® Principal Broker, Owner
Hapuna Realty
68-1330 Mauna Lani Drive, Suite 130
Kohala Coast, HI 96743

www.HapunaRealty.com
Tomo@HapunaRealty.com
808.557.8689



Hapuna Beach Villa at Mauna Kea Resort

9,250 SQFT | 4BR/5FB/1HB | 1.46AC

The Hapuna Beach Villa is a landmark estate set on the most exclusive oceanfront promontory at the Mauna Kea Resort. This is a one-of-a-kind living environment – supremely private, quietly exclusive and in all ways visually and spiritually invigorating. Crowning the most prominent point at the Mauna Kea Resort, and sitting majestically above a velvet green lawn that leads to the beach considered the best in all Hawaii, is a rare opportunity for an unparalleled island lifestyle at the water's edge. No setting on the Big Island is quite so dramatic or enjoys such a rich array of amenities.



MaunaKeaLiving.com



Hapuna Beach Residences Mauna Kea Resort

675 SF ~ 3,500 SF | Studio ~ 4BR/4BATH
\$1,500,000 ~ \$8,000,000

INTRODUCING HAWAII'S MOST EXTRAORDINARY BEACHFRONT RESIDENCES ON HAPUNA BEACH AT THE BELOVED MAUNA KEA RESORT

Let nothing come between you and the sea, sand and sky. Let nothing come between you and the legendary destination that created and has defined island luxury for generations. A rare and historic opportunity to own what may be the last beachfront residences in the world so magnificently located. This beachy contemporary residence features a private pool, European Oak wood flooring, high-end appliances such as Wolf stove/oven/microwave, Sub-Zero fridge, Miele dishwasher, Asko or Maytag front-load washer/dryer and upscale fixtures. Do not miss this rare opportunity to own this one-of-a-kind residence steps away from one of the best white sand beaches in the world!

MaunaKeaLiving.com



www.HapunaRealty.com
Tomo@HapunaRealty.com
808.557.8689

Tomoko Matsumoto
REALTOR® Principal Broker, Owner
Hapuna Realty
68-1330 Mauna Lani Drive, Suite 130
Kohala Coast, HI 96743



Hapuna Estates

CUSTOM ESTATE HOMESITES WITH LONG SWEEPING VIEWS OF THE KOHALA COAST
FROM \$795,000



PLEASE VISIT OUR NEW SALES CENTERS AT WESTIN HAPUNA RESORT AND AT SHOPS AT MAUNA LANI



To learn more about the offerings at Hapuna contact:
Tomoko Matsumoto
808.557.8689
Tomo@MaunaKeaLiving.com

REALTOR® HI RB-20042

Hapuna Beach Residences

LUXURIOUS BEACH AND OCEANFRONT RESIDENCES ON HAWAII'S BEST BEACH
FROM \$1.5 – \$8 MILLION



**SCHEDULE YOUR VISIT TODAY
WE'RE NOW 1/3RD SOLD OUT**

Here is the opportunity to make the Big Island's legendary resort your home — with dramatic new offerings that include 11 custom homesites with incomparable 360-degree views from the snowcapped Mauna Kea all the way to Maui. There is also the first-ever opportunity to own absolutely on Hawaii's best beach — Hapuna. Spacious one- to four-bedroom residences literally steps to the water's edge.

MaunaKeaLiving.com

 For Hapuna Beach Residences, obtain the Developer's Public Report for a Condominium required by Hawaii law and read it before signing a binding sales contract. No federal or state agency has judged the merits or value, if any, of these properties. This does not constitute an offer to sell or a solicitation of any offer to buy where prohibited by law. For Hapuna Estates, obtain the Public Offering Statement required by Hawaii law and read it before signing a binding sales contract. No federal or state agency has judged the merits or value, if any, of these properties. This does not constitute an offer to sell or a solicitation of any offer to buy where prohibited by law. It is important to note that some or all of the information set forth herein may change substantially, including whether any properties will, in fact, be offered for sale.

LUXURY HOME

M A G A Z I N E

6800 Kalanianaʻole Hwy., Suite 101 Honolulu, HI 96825

It's Your Choice

Choose Hawaii's kama'aina title and escrow company

Photo: Cully Kamisugi



TITLE GUARANTY
— SERVING HAWAII SINCE 1896 —

Title and Escrow is our business.
Hawaii is our home.

Visit TGHawaii.com