

# LUXURY HOME<sup>®</sup>

M A G A Z I N E

*Hawai'i* KAUAI • OAHU • MAUI • MOLOKAI • LANAI • BIG ISLAND

ISSUE 15.5



At The Newsstand: \$7.99

LUXURYHOMEMAGAZINE.COM

The Point at Pauoa Beach, Hawaii Island  
Presented by Carrie Nicholson, Pages 18-19





**#2306 \$3,685,000**

- 3 BD, 2.5 BA, 2,023 sf, Lanai 76 sf, Foyer 130 sf
- Diamond Head, Ocean, Marina, Mountain, Beach Park & City Views



**#3700 \$2,288,000**

- 3 BD, 3 BA, 1,331 sf
- Ocean, Mountain, Marina, Beach Park & Sunset Views

## Buyers' Testimonials - September 2020

May and Jack Tyrrell know Honolulu inside and out. They are not only seasoned realtors but also long time residents and owners themselves. May and Jack took incredible amounts of time to patiently share many options with us, which ultimately resulted in our purchasing the home of our dreams. Their professionalism, vast experience, and guidance are second to none. If there's a translation for "real estate aloha" it would have to be Jack Tyrrell & Company. Many mahalo's to you and your amazing team--we are honored to now be your friends and neighbors!

- D & E from California -

Looking for a great real estate team – this is the place. We thought we knew what condo to buy. That's when May taught us about the condo we see, and the quality differences we did not see. We had challenges – May and Jack had solutions. May and Jack taught us about condos, and we reset our condo GPS. We ended up in a far better place for living and for investment. If you want a typical real estate agent, this is not the place. If you want a caring and informed team that can teach you about Hawaii real estate, be with you every step of the process, make real estate magic happen, this is the place!

- K & D from Arizona -



**John "Jack" Tyrrell**  
President  
Principal Broker, CRS, CRB  
CPA (not in public practice)  
Lic. # RB-19880  
E: Jack@jtchawaii.com  
C: 808.306.6933



**May Lew Tyrrell 廖富漢**  
Executive Vice President  
Broker-In-Charge, MBA, GRI, CRS, CRB, CIPS  
Lic. # RB-22693  
WeChat: Mayinhawaii (普通话)  
E: May@jtchawaii.com  
C: 808.223.3364



Jack Tyrrell & Company  
September Sales



## WAIĒA

Ward Village

- **#1306 SOLD** - 3BD, 2.5BA, 2,023 sf, Lanai 76 sf
- **#2602 SOLD** - 2BD, 2.5BA, 1,866 sf



## ANAHĀ

Ward Village

- **#2600 SOLD** - 3BD, 3BA, 2,492 sf



## AEŌ

Ward Village

- **#3905 IN ESCROW** - 1BD, 1BA, 704 sf



## HOKUĀ

Ala Moana

- **#10F IN ESCROW** - 2BD, 2BA, 1,532 sf

# WAIKIKI LANDMARK

Waikiki

### Penthouse 3501 \$3,700,000

- 3 BD, 3 BA, 3,111 sf, Lanai 75 sf, 3 Prkg
- Ocean, Mountain, City Views

### Penthouse 3502 \$2,100,000

- 1 BD, 1 BA + 2 half BA, 2,134 sf, 2 Prkg
- Diamond Head, Ocean, Mountain, City Views

### Penthouse 3503 \$2,200,000

- 2 BD, 2 BA, 2,015 sf, Lanai 144 sf, 2 Prkg
- Ocean, Mountain, City Views

### Penthouse 3504 \$3,850,000

- 3 BD, 3 BA, 3,225 sf, Lanai 69 sf, 3 Prkg
- Diamond Head, Ocean, Mountain, City Views



**WARD  
VILLAGE**  
Top Producing Agent by  
Units & Dollar Volume  
2014

**WARD  
VILLAGE**  
Top Producing Agent by  
Units & Dollar Volume  
2015

For More Information:  
808 532 3330  
[www.jtchawaii.com](http://www.jtchawaii.com)



Jack Tyrrell & Company



@jtchawaii



@jtchawaii

**JACK TYRRELL  
& COMPANY**

A Real Estate Brokerage Corporation

\* The information presented herein is provided as is, without warranty expressed or implied of any kind. Information herein deemed reliable but not guaranteed.





## THE HAWAII OF BYGONE DAYS

Honolulu, Oahu | 7,193 SQFT | 26,373 Land SQFT | 7BR/6BA | MLS# 202023559 | \$6,995,000

*The Hawaii of Bygone Days....* This picturesque island residence has been in the same family for over 85-years and rests proudly on a beautiful beachfront parcel of over 26,000 square feet. The main house offers 5-bedrooms and 5 baths and over 6,000 square feet of both formal and casual living and entertaining areas, soaring ceilings with custom inlaid wood details and gorgeous ocean and mountain views

throughout. A separate 2-bedrooms and 1 bath cottage plus a carport/storage dwelling are all wonderfully positioned on this fabulous property complete w/ tropical landscaped grounds, swaying palms & lovely mature trees. With 133 linear feet of beach frontage one will never tire of watching stunning sunsets by the sea... This home is truly a rare island treasure not to be missed. Adjacent TMK included.



\$6,995,000



**Tracy Allen**  
Vice President, RA, RS-46610  
Global Luxury Ambassador  
Luxury Property Specialist  
808.927.6415  
Tracy@CBRealty.com  
www.TracyAllenHawaii.com





ISSUE 15.5

INDEX



\* Founding or Prestigious Member



FRONT COVER HOME

The Point at Pauoa Beach, Hawaii Island  
Pages 18 & 19  
Photo by Jonathan Davis | www.spaces808.com

THE BIG ISLAND

Ahmad Mohammadi	40, 49
Carrie Nicholson	Front Cover, 17-19, 27, 41
Donna Duryea*	62
Eileen Lacerte*	45
Erik & Romy Jacobson	56
Genevieve Firestone	40, 49
Hapuna Beach Residences	64-65
Jan Nores	36
Joni J. Metzler*	10-13, 38-39
Kohanaiki	14-15
Maggie Zhang	60
Margery Mayo*	59
Meg Saunders	62
Tomoko Matsumoto*	66-67

THE ISLAND OF KAUAI

Harvest Edmonds	51
-----------------	----

THE ISLAND OF LANAI

Mary Anne Fitch*	30
Nam L. Le Viet*	30

BUSINESS PARTNERS

Corcoran Pacific Properties	52
LUVA Real Estate	Back Cover
Padilla Designs, LLC*	16

THE ISLAND OF OAHU

Esther H. Park*	50, 55
Jeffrey M. Fox*	58
John "Jack" Tyrrell*	2-3
Mary Anne Bruno	61
May Lew Tyrrell*	2-3
Noel Pietsch Shaw	24-25, 44
Sachi Braden*	43
Tracy Allen*	4-5
Vincent T.C. Tai	48
Vince Vanderstroom	57

THE ISLAND OF MAUI

David W. Richardson	63
Diane K. Pool*	20, 46
Gregory Harbottle Inc.*	7
Jennifer Rice	53
Josh Jerman	23, 37
Kenneth M. 'Ken' Hayo*	26, 31, 42, 47
Kimi Correa	21
Leah Harbottle	7
Linda Hedden	9
Mary Anne Fitch*	8
Mino McLean	35
Nam L. Le Viet*	8
Robert H. 'Robbie' Dein*	26, 31, 42, 47
Robert R. Myers*	32
Rhonda Smith Sanchez	28-29, 33
Sam Utlej	35
Tom Tezak	20

LUXURY HOME MAGAZINE® OF HAWAII™  
PACIFIC LUXURY LIVING™  
6800 Kalanianaʻole Hwy., Suite 101  
Honolulu, HI 96825  
Phone: 808.499.5491 • Fax: 916.404.8867

FOR ADVERTISING INFORMATION VISIT:

[luxuryhomemagazine.com](http://luxuryhomemagazine.com)

[info@lhmhi.com](mailto:info@lhmhi.com)

The most comprehensive and targeted distribution in the area, bar none!

SUNSHINE PUBLICATIONS, INC.  
1020 Suncast Lane, Suite 104  
El Dorado Hills, CA 95762

Phone: (916) 458-6010  
Fax: (916) 404-8867  
[info@luxuryhomemagazine.com](mailto:info@luxuryhomemagazine.com)

[LuxuryHomeMagazine.com](http://LuxuryHomeMagazine.com)

Visit Our Blog:  
[LuxuryHomeMagazine.com/blog](http://LuxuryHomeMagazine.com/blog)

Chief Executive Officer  
Brad Taylor | [brad@lhmmediagroup.com](mailto:brad@lhmmediagroup.com)

Chief Financial Officer  
Cathy Taylor | [cathy@lhmmediagroup.com](mailto:cathy@lhmmediagroup.com)

Publishing Opportunities  
[publishing@lhmmediagroup.com](mailto:publishing@lhmmediagroup.com)

Published six times per year  
©2020 Sunshine Publications, Inc.

Luxury Home Magazine®, Luxury Living and Lifestyle™ and LuxuryHomeMagazine.com are protected trademarks of Sunshine Publications, Inc. and LHM Media Group. Publisher is an authorized independent distributor and licensee for a market specific area of Luxury Home Magazine®, Luxury Living and Lifestyle™ and LuxuryHomeMagazine.com. Publisher is licensed through Sunshine Publications, Inc. and LHM Media Group. Sunshine Publications, Inc. and LHM Media Group are not responsible for the contents of the magazine or the acts or omissions of the publisher or its representatives and makes no representations or guarantees. Reproduction in whole or in part (including materials, photos and formats) in any form without written permission from Sunshine Publications, Inc. and LHM Media Group is prohibited. All submissions become the property of Sunshine Publications, Inc. and LHM Media Group and may be used in any print, digital, social and online media. All rights reserved.

The information contained in *Luxury Home Magazine®* is deemed reliable, but not guaranteed. Contact each individual agent to verify information, which is subject to change.

Made and Printed in the USA.

Next Deadline:  
Wednesday,  
November 11, 2020

15.6  
The Holiday Issue





## KA'ANAPALI ALII UNIT #IV-406

Ka'anapali, Maui | 1,675 SQFT | 2BR/2BA | \$3,300,000

Experience breathtaking ocean views while overlooking the expertly manicured courtyard grounds of the prestigious Ka'anapali Alii Resort. Unit #4-406 offers the beauty of beachside living paired with the comfort of a luxury condominium in this spacious 2 bedroom, 2 bathroom residence. Elegantly updated throughout, this Ka'anapali Alii home is truly a rare opportunity not to be missed.

**THIS PROPERTY WAS SOLD BEFORE MLS LISTING**

*Contact us for confidential sales consultation and strategy.*



### Leah Harbottle

Realtor®-Broker, Lic. #22910

Cell: 530.906.9180

Toll Free: 866.661.7887

Fax: 808.661.8358

Leah-Whalers@KW.com

www.KaanapaliLuxuryLiving.com



### Gregory Harbottle Inc. R (PB)

Luxury Property Specialist, Lic. #19615

Cell: 808.385.8059

Toll free: 866.661.7887

Fax: 808.661.8358

ghthkh@msn.com

www.KaanapaliLuxuryLiving.com





\$37,500,000



MAUI OCEANFRONT  
CONSERVATION ESTATE

Kapalua, Maui | 6,645 SQFT | 9.96 AC  
8BR/8.5BA | MLS# 384865 | \$37,500,000

Boasting nearly ten captivating acres of oceanfront, 9 Bay Drive is the crown jewel of conservation land known as Hawea Point, home for seabird nesting and cultural sites, in West Maui. Nestled into the prime location within Kapalua Resort, this gated legacy property encompassing over 12,000 square feet of interior and exterior living spaces, along with the adjacent 12+ acre open space, stretches close to one mile between Namalu Bay and Oneloa Bay. An awe-inspiring masterpiece with its own Coast Guard light, this timeless creation offering flawless resort-style accommodations for 12 or more, was reconstructed in 2017 on its breathtaking setting.



Mary Anne Fitch  
R(B)-15747  
Hawaii Life Real Estate Brokers  
Direct: 808.250.1583  
Email: sold@maui.net  
Web: soldmaui.com



Nam L. Le Viet  
R(S)-61810  
Hawaii Life Real Estate Brokers  
Direct: 808.283.9007  
Email: nam@mauisold.com  
Web: mauisold.com







\$23,000,000



## RARE KEAUHOU AT MAKENA ESTATE

**Makena, Maui | 5,882 SQFT**  
**3.15 ACRES | 5BR/4.5BA**  
**MLS# 385175 | \$23,000,000**

Rare Keauhou at Makena estate offers sophisticated, contemporary flair and over three acres of manicured tropical landscaping making it both an ideal private retreat and a home for those who love to entertain. Positioned peacefully above the white sand of Palau'ea Beach this gated ocean-view property's location is unparalleled in its proximity to all which Wailea has to offer including the Championship Golf Courses, Five Star Wailea Resorts, Luxury Spas, and World-Class Dining and Shopping. See the property video at [www.4557makena.com](http://www.4557makena.com)



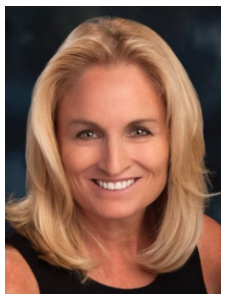
**Linda Hedden**

Realtor (B), RB-22921

808.280.3054

[Linda@Lindahedden.com](mailto:Linda@Lindahedden.com)

[www.WaileaLiving.com](http://www.WaileaLiving.com)







KAPALAOA ESTATE LOTS

Kona Kohala Coast, Big Island | 6 to 8+ AC  
MLS# 640027 | \$22,000,000  
MLS# 634680 | \$18,750,000  
MLS# 635105 | \$15,000,000

The Kona Kohala Coast, the world’s favorite family vacation playground, now includes Kapalaoa Estate Lots, located at the most beautiful white sand beach & sanctuary on the Big Island. Lots are accessed via a private drive from Queen Ka’ahumanu Highway within a mile from the Waikoloa Beach Resort. Direct access to some of the best swimming, fishing, snorkeling, diving, whale watching and ocean exploring is right at the doorstep of these 6 to 8+ acre parcels, while access to the neighboring amenities of Waikoloa Beach and the lively Resorts along the coastline is already in place.



\$22,000,000



Joni J. Metzler  
(R) B  
Metzler Realty  
808.640.6832  
Joni@MetzlerRealty.com  
www.MetzlerRealty.com







## DISTINCTIVE ESTATE HOME AT KOHANAIKI

Kohanaiki, Big Island | 4BR/4.5BA | MLS# 637909 | \$19,500,000

Upon entering the front gate, the ambience of the estate is one of lush tropical elegance. The estate, situated on a prominent tier with panoramic views of the spectacular Kona coast was chosen by the owner after walking every lot at the new development, Kohanaiki, a private equity club located on the Big Island. The owners next selected the team of John Metzler, Metzler Contracting, architect Shay Zak, Zak Architecture and Douglas Durkin, Durkin Design to create their island home. The home, with over 7,200 square feet under roof, is truly an architectural work of art, including the flawless craftsmanship, exquisite bespoke

furnishings, fixtures and artworks. Features include vaulted ceilings with clerestory windows, pocketing sliding doors, teak louvers, teak cabinets, stone flooring opening to expansive lanais, lush landscaped lawns and gardens. Views of the ocean and sunset are enjoyed year around from the lanais fronting the Great Room & both Master Bedrooms, custom Paepae and swimming pool and spa! Kohanaiki is a private equity club and membership is "By Invitation Only."



\$19,500,000



METZLER  
REALTY



Joni J. Metzler  
(R) B

Metzler Realty  
808.640.6832

Joni@MetzlerRealty.com  
www.MetzlerRealty.com





# YOUR SANCTUARY ON THE KONA COAST



## HOME HAPPENS HERE.

Nestled on the idyllic Kona coastline of the Big Island of Hawai'i, the exclusive community of Kohanaiki features a 67,000-square-foot private clubhouse & spa, 18-hole Rees Jones golf course, adventure team, beach club, organic community farm and exquisite dining, all within 450 acres of oceanfront luxury estates. Homes designed by renowned architects like Shay Zak, Khoi Le and Jim McLaughlin are inspired by the rugged landscape of ancient lava flows, panoramic ocean views, and the ever-present Kona sunshine. Discover your new sanctuary at Kohanaiki. **From \$2.8 Million.**

Access to and use of the golf course and other private amenities at Kohanaiki Club is available only to members of the Kohanaiki Club and are subject to the payment of additional fees. Membership to the Kohanaiki Club is by invitation only and is not included with a purchase of a property. No representation or warranty is made regarding whether a purchaser will qualify for such membership. Obtain the Property Report or its equivalent required by Federal and State law and read it before signing anything. No federal or state agency has judged the merits or value, if any, of the property shown in this brochure. WARNING: THE CALIFORNIA DEPARTMENT OF REAL ESTATE HAS NOT INSPECTED, EXAMINED, OR QUALIFIED THIS OFFERING. Kohanaiki Realty LLC, 73-2055 Ala Kohanaiki, Kailua-Kona, HI 96740.







Call for your private tour  
(888) 406-1256 | [kohanaiki.com/kona](http://kohanaiki.com/kona)





# Custom Interior & Exterior Functional Art SERVING ALL HAWAIIAN ISLANDS & BEYOND



PLEASE VISIT OUR GALLERY  
[padilladesigns.com](http://padilladesigns.com)

808 879 0938







\$19,450,000



## CONTEMPORARY ELEGANCE AT KOHANAIKI

**Kohanaiki, Big Island | 5,532 SQFT**  
**Land Area: 34,500 SQFT | 6 BR / 6.5 BA**  
**MLS # 641832 | \$19,450,000**

Perfectly positioned on nearly an acre within a private club community called Kohanaiki; is this well-appointed custom designed residence overlooking the Pacific ocean and offers ultimate luxury living on the Big Island of Hawaii. In a prime location near a white sandy beach, coastline and Club House amenities, this beautiful estate has over 8,200 square feet under roof. This awe-inspiring flawless residence enjoys resort-style living in a breathtaking setting. With spectacular unprecedented ocean views; this residence is within walking distance to fun surfing, body boarding, snorkeling and well-known scuba diving along the coastline.

**CHRISTIE'S**  
 INTERNATIONAL REAL ESTATE  
 2019 **LUXURY SPECIALIST**



**Carrie Nicholson**

Realtor®, BIC

Director, Hawaii Life One

Hawaii Life – Christie's International Real Estate

Direct: 808.896.9749 | IG: @carrierealestate

Carrie@hawaiilife.com | Carrie-Nicholson.com







*Cover Home*

# The Point at Pauoa Beach Mauna Lani Resort, Hawaii Island



**5,609 SQFT interior | 4BR/4.5BA | 1.56 acres | MLS# 634271 | Offered at \$17,900,000**

This exquisite home offers contemporary beachfront living with a casual elegant vibe. Few, if any, luxury homes rival this contemporary beachfront residence located in the gated enclave at Pauoa Beach within the iconic Mauna Lani Resort. Over 5,600 sq. ft. of clean modern interior elegance, consisting of 4 bedrooms, 4.5 bathrooms, combined with 2,000 sq. ft. of covered lanai, providing 7,600 sq. ft. of indoor/outdoor living and spacious 4 car enclosed garage.

This property encompasses 300 linear feet of ocean frontage and a private guard gated entry. Arrive to a modern courtyard with tropical landscape and water features that welcome you. This is an opportunity to own the pinnacle point reaching out into Pauoa Bay. Along the oceanfront edge of the property is a 6' tall Naupaka hedge providing incredible privacy, while still allowing spectacular 200-degree views of the ocean, sunsets, and the Island of Maui.





**CHRISTIE'S**  
INTERNATIONAL REAL ESTATE  
2019 **LUXURY SPECIALIST**



**Carrie Nicholson**

Realtor®, BIC

Director, Hawaii Life One

Hawaii Life – Christie's International Real Estate

Direct: 808.896.9749 | IG: @carrierealestate

Carrie@hawaiilife.com | Carrie-Nicholson.com





\$17,500,000



4478 MAKENA RD

Wailea/Makena, Maui | 3,469 SQFT  
0.52 AC | 3BR/3.1BA | MLS# 387740  
\$17,500,000

Maui, It's a Lifestyle, and here is the perfect location. If Goldilocks was buying in Makena, she would look at this home and say it's not too BIG ... it's not too small ... But it is Just Right! If you are searching for the ideal home on the sand in Maui, you MUST experience this home. Ideally located with 150 feet of frontage on Palauea Beach (AKA White Rock Beach). With its Tropical pacific contemporary design, gorgeous cherry hardwood floors and spacious open floor plan, you will enjoy ocean views from every room as well as the pool. Tucked inside of the lush tropical landscaping that provides exceptional privacy... yet you are only 23 steps to the beach. Life is Precious, Make Every Moment Count.



Tom Tezak  
R(B)-21167  
808.280.2055  
tom@TomTezak.com  
www.TomTezak.com



Diane K. Pool  
R(B)-17896, ABR, CRS  
808.276.2004  
diane@SoldOnMaui.net  
www.SoldOnMaui.net





\$15,000,000



## 50 OLUOLU PL

Kula, Maui | MLS# 388207 | \$15,000,000

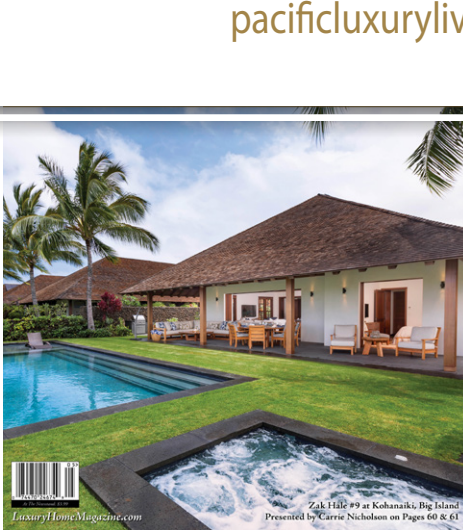
This Estate is incomparable to any other Maui property. Nestled amidst the clouds is this magical place. Beauty surrounds you in your own private gated 23 acre retreat. This Grand Estate includes a Mansion with accordion elevator that connects all three floors, an Apartment located above the 3 car garage, a two-story Gate/Guest house, a Single story caretakers Cottage, a Pool Pavilion with an over sized heated infinity pool and water features, a 9-car detached show garage, a decorated kids clubhouse, an exterior office, Marble Gazebo, and a large Barn equipped with a car lift, air compressor, and the bells and whistles to build and store your collection.

**LUVA**  
REAL ESTATE

**Kimi Correa**  
Broker-in-Charge, RB-22542  
LUVA Real Estate  
808.222.3047  
E Kimi.Correa@gmail.com  
www.KimiCorrea.realtor









\$12,800,000



## 588 KULAIWI DR

Wailuku, Maui | 8,032 SQFT | 5.75 AC LAND  
5BR/5.5BA | MLS#:386171 | \$12,800,000

Gated estate set on a mountain top for ultimate privacy and security with sweeping views of the central isthmus and the north and south shorelines. This vantage point is unmatched by any other on Maui. Open spaces allow trade winds to circulate, projecting eaves keep rain out without closing windows, and the use of clerestory windows brings outside light into the home. Nishikawa Architects was influenced by the iconic work of C.W. Dickey, and this property was the winner of BIA Hawaii's 2016 Grand Award for design excellence.



Josh Jerman

REALTOR(B), RB-19728

808.283.2222 | Josh@HawaiiLife.com



HAWAII LIFE  
REAL ESTATE BROKERS

CHRISTIE'S  
INTERNATIONAL REAL ESTATE





## PARK LANE ALA MOANA

Honolulu, Oahu | 4792 SQFT | 4BD/3.5BA | MLS# 202022019 | \$12,745,000

First-time-to-market, a rarely available, Four Bedroom Park Residence at Park Lane Ala Moana, Honolulu's preeminent luxury development. This Penthouse sized home, situated along the namesake Park Lane walk-way, is for the most discerning buyer. From this home, enjoy lush, tropical landscaping outside your back windows and direct ocean views out front. The interior design and custom upgrades in this

home were done by award winning luxury design firm Philpotts Interiors and includes custom built-in Walnut cabinetry by Logan White, Master walk-in closet by Poliform, Designer light fixtures by Holly Hunt, Johnathan Browning, Bocci and Boyd, and a world class audio visual package by Blueprint Audio Visual. *Email agent for property video and 3D Matterport virtual tour.*







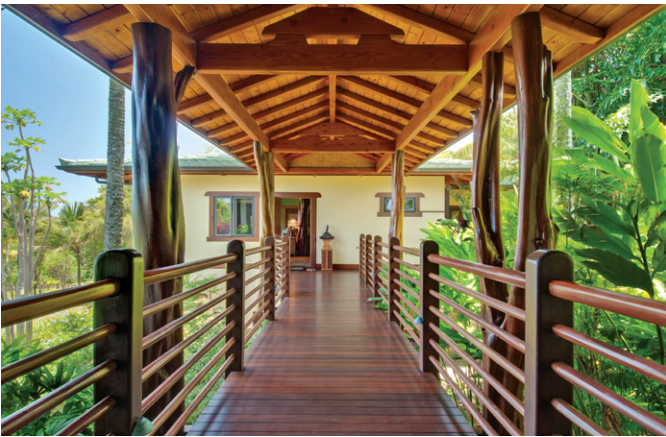
\$10,995,000



‘HAIKU HEAVEN’  
ON EARTH

Haiku, Maui | 5,573 SQFT  
30.7 Acres | 5BR/4.5BA  
MLS# 384363 | \$10,995,000

As you drive towards the ocean on Haumana Rd, you are mesmerized by the vitality of the flowers & flora along the 1/4 mile driveway. Inside, the warmth of the wood floors, ceilings & custom Ohia posts are compelling. Stainless steel, limestone & granite surfaces compliment Maui Architectural Group’s award winning design. A breezeway beckons you towards the master suite & gym. In another wing, guests will enjoy 2 bedrooms with en-suite baths. A cascading waterfall flows into the lagoon style pool. You call upon your guests to ponder your collective blessings as you gather in the pool pavilion adjacent to the spa, sauna & built-in BBQ. [Haumana.info](http://Haumana.info)



**Robert H. ‘Robbie’ Dein**  
Broker-Owner, ABR, CRS, RSPS | RB-18398  
Maui Real Estate Advisors, LLC  
Direct: 808.250.3564  
[Robbie@MauiRealEstateAdvisors.com](mailto:Robbie@MauiRealEstateAdvisors.com)



Maui’s Only Realtor Recognized as a ‘Top 100 State of Hawaii Realtor’ Among 15,000 + Hawaii Realtors (for 14 Consecutive Years),  
Top 100 Hawaii Realtors Hall of Fame, Hawaii Business Journal 2006–2019

**Kenneth M. ‘Ken’ Hayo**  
Principal Broker-Owner | RB-15529  
Maui Real Estate Advisors, LLC  
Direct: 808.283.8435  
[Ken@MauiRealEstateAdvisors.com](mailto:Ken@MauiRealEstateAdvisors.com)





\$9,950,000



## MAGNIFICENT OCEANFRONT ESTATE

Ninole, Big Island | 10,942 SQFT Total  
9.44AC Land | 5BR/4BA + 3 1/2 BA  
MLS # 640242 | \$9,950,000

Water Falling Estate sits cliff-side on a promontory overlooking the Pacific Ocean. Two natural waterfalls cascade into the ocean on either side of the residence. The many highlights include a rooftop deck and a central Daytona 52-inch round pneumatic elevator. Amenities include a lighted tennis/basketball court with stadium-style seating for 450 spectators, golf practice area, 9-holes of golf and a cliff side aquatic center, 25-meter Olympic swimming pool, a 16-foot deep diving pool, spa, a 25-meter children's pool and sauna plus a wet bar, exterior grill and dining area. This property sale includes two TMK's 3-3-2-3-41; 3-3-2-3-23.

**CHRISTIE'S**  
INTERNATIONAL REAL ESTATE  
2019 LUXURY SPECIALIST



**Carrie Nicholson**

Realtor®, BIC

Director, Hawaii Life One

Hawaii Life – Christie's International Real Estate

Direct: 808.896.9749 | IG: @carrierealestate

Carrie@hawaiilife.com | Carrie-Nicholson.com







## 22 WA`A PLACE

Paia, Maui | 11,182 SQFT | 5BD/5BA | \$9,250,000

Paia's crown jewel 22 Wa'a Place, an oceanfront luxury estate on Maui's beautiful north shore. Enjoy your own gated privacy with the sounds of trade winds through mature Monkey Pod and Banyan trees and soothing water features on this impressive 1.25-acre estate. The Bali inspired exterior is highlighted by a modern heated pool, grand Ohia posts encased in lava rock trunks, Ironwood Balinese style roofing, and grand covered lanais of over 3000sf with daybeds overlooking the calm Tavares Bay. The beautiful open floorplan of over 7000sf with solid teak pocket

doors easily accesses the pool, the ocean, and ocean views. Enjoy the peacefulness of this designer interior with the excellent use of imperial plaster, bamboo weaved ceilings, and hand-carved Bali doors...subtle beauty, and tranquility throughout. The orientation and design of the home and cottage best capture the calming trade winds, the serene sounds of the ocean, and mature landscaping. Beautiful artisan craftsmanship creates this true tropical and elegant oceanfront estate.



\$9,250,000



**COLDWELL BANKER** | ISLAND PROPERTIES



**Rhonda Smith Sanchez**

RB-22953

Maui's North Shore Specialist

808.205.2175

[Rhonda@RhondaMaui.com](mailto:Rhonda@RhondaMaui.com)

[Rhondamaui.com](http://Rhondamaui.com)



[LuxuryHomeMagazine.com](http://LuxuryHomeMagazine.com)



\$8,800,000



LIFE ON LANAI  
AT HULOPOE BAY

Hulopoe Bay, Lanai | 4,951 SQFT  
1.2 AC | 4BR/4.5BA | MLS# 387833  
\$8,800,000

This alluring Estate is perched above Hulopoe Bay and Sweetheart Rock, Puu Pehe. A safe, sustainable sanctuary that feels a world away but is still in the US on the Covid-19 free island of Lanai. With commanding views of Hulopoe Bay, this serene gated estate features a carbon neutral home, mature landscaping and automated pool system. The private residence welcomes you with dramatic views of Maui and Kahoolawe from a living room with disappearing glass walls for the best of indoor-outdoor living. A master suite with private deck, walk-in closet with laundry, and large bath are the epitome of the tropical luxury. Dining and Resort amenities are available at the nearby Four Seasons Resort Lanai. A 40' fishing boat with slip at the Manele Harbor can also be included.



LuxuryHomeMagazine.com



Mary Anne Fitch  
R(B)-15747  
Hawaii Life Real Estate Brokers  
Direct: 808.250.1583  
Email: sold@maui.net  
Web: soldmaui.com



Nam L. Le Viet  
R(S)-61810  
Hawaii Life Real Estate Brokers  
Direct: 808.283.9007  
Email: nam@mauisold.com  
Web: mauisold.com







\$8,500,000



## A QUINTESSENTIAL BEACHFRONT HOME

Olowalu, Maui | 2,562 SQFT | .54 Acres  
3BR/4.5BA | MLS#388443 | \$8,500,000

The compelling presence of the indigo blue Pacific, punctuated by the cerulean horizon, is wonderfully distracting as you pass through the hand-carved teak 'Menehune' columns & pivotal front doors. Velvety plaster walls rise from the etched acid-washed marble floors along open-air corridors with hand-carved limestone Banana Tree wall reliefs, Kahili Tiki torches, waterways & gardens. Enhancing the Great Room, an intricately carved teak 'Javanese Joglo' is a spirit-lifting, museum-like wonder. Delight in the artistry throughout. Enjoy resort-quality living, Caribbean-like coral gardens & calm clear reef-protected waters. [Olowalu.info](http://Olowalu.info)



### Kenneth M. 'Ken' Hayo

Principal Broker-Owner | RB-15529  
Maui Real Estate Advisors, LLC  
Direct: 808.283.8435  
[Ken@MauiRealEstateAdvisors.com](mailto:Ken@MauiRealEstateAdvisors.com)



### Robert H. 'Robbie' Dein

Broker-Owner, ABR, CRS, RSPS | RB-18398  
Maui Real Estate Advisors, LLC  
Direct: 808.250.3564  
[Robbie@MauiRealEstateAdvisors.com](mailto:Robbie@MauiRealEstateAdvisors.com)



Maui's Only Realtor Recognized as a 'Top 100 State of Hawaii Realtor' Among 15,000 + Hawaii Realtors (for 14 Consecutive Years),  
Top 100 Hawaii Realtors Hall of Fame, Hawaii Business Journal 2006-2019



\$8,250,000



218 PLANTATION CLUB DR

Kapalua, Maui | 7,267 SQFT | 2.19 AC Land  
5BR/5.5BA | MLS#388247 | \$8,250,000

Experience the majestic year-round sunset, ocean and island views of this magnificent home. This incredible residence sits on 2.2 acres of prime real estate perched above the 18th fairway over the renowned Plantation Golf Course at Kapalua. These gorgeous views can be enjoyed from every room and overlooks five fairways to the ocean. Offering over 7200 square-foot of the luxurious living space with five bedrooms and five and half bathrooms, it also features a glass fronted wine cellar, gourmet kitchen, exquisite dining room, and media room with sound system, including bar. [www.MauiHomeSales.com/218Plantation](http://www.MauiHomeSales.com/218Plantation)



Robert R. Myers  
REALTOR (S), SRS  
Tel: 808.283.3067  
Robert@MauiHomeSales.com  
[www.MauiHomeSales.com](http://www.MauiHomeSales.com)



For all the Maui listings check out my website:  
**[www.MauiHomeSales.com](http://www.MauiHomeSales.com)**  
Including Interactive Maps of Kaanapali, Kapalua and Wailea







\$8,250,000



## 525 HANA HWY

Paia, Maui | 3,600 SQFT | 6BD/4BA  
MLS#388588 | \$8,250,000

Incredible North shore oceanfront retreat. Four Structures on a 15,000sf lot, three homes, and a three-car garage with laundry and an office. Perched off Hana Hwy between Paia and Kuau, just in front of Tavares Bay's wave, the perfect "right, sits a charming oceanfront and poolside haven. Three homes, separately, privately, and masterfully appointed all with their own beautiful ocean views. Once inside a Mediterranean charm unfolds of natural architecture, high roof lines, coral accents walls, yellow Venetian plaster textured walls, and the striking royal blue pool.

## Rhonda Smith Sanchez

RB-22953

Maui's North Shore Specialist

808.205.2175

Rhonda@RhondaMaui.com

Rhondamaui.com







ENJOY AN INDOOR-OUTDOOR SOAK  
WITH TOTAL PRIVACY.  
SEE PAGE 36





\$6,995,000



4725 HANA HWY

Haiku, Maui | 4,500 SQFT  
38.91 AC Land | 5BR/6BA  
MLS# 387854 | \$6,995,000

It's not every night you get to dance poolside, barefoot, and underneath the stars. In this private north shore hideaway, however—which sits on 39 tropical acres—magical moments are a daily occurrence, from the time the sun ignites morning rainbows that traverse past your ocean view bedroom, to showering outdoors while bathed in moonlight, after cocktails on the expansive coral stone courtyard. This serene, six-bedroom, private estate is the ultimate retreat for hosting family or groups of visiting friends, and is capped by stunning architecture and design, from the Japanese-inspired, cedar shake roof and Hickory woodwork in the kitchen, to Balinese-infused, outdoor showers accompanying four of the bedrooms.

HaikuLuxury.com



**Sam Utley**  
RB-23179  
Island Sotheby's International Realty  
(808) 205-5088  
samutley@me.com  
MinoAndSam.com



**Mino McLean**  
RB-21623  
Island Sotheby's International Realty  
808.283.9613  
mino@mauimino.com  
MinoAndSam.com





\$6,950,000



PUAKO OCEANFRONT  
REFUGE

Puako, Big Island | 3,774 SQFT  
15,063 SQFT Land | 3BR/3.5BA  
plus office | MLS# 640045 | \$6,950,000

Puako, the hidden treasure of the Big Island, holding a special spirit of Aloha in the tropical breezes that dance through the coconut palms, sparkling azure blue water, black lava reefs, where whales and turtles come to rest, play and refuge! Features 3 suites plus lux office, powder room, courtyard entry with Koi Pond, swimming pool, 2 outdoor showers, an outdoor pizza oven and kitchen with over 5300 sq. ft. under roof, including garage and lanais. State of the art Lutron Homeworks Intelligent lighting, Sonos sound system, Honeywell Security System all at the touch of your fingertip from anywhere! This home is turn key furnished, including art, toys and a vehicle! Laid back, friendly, with a small neighborhood feel, Puako hearkens back to a peaceful, sweet lifestyle!



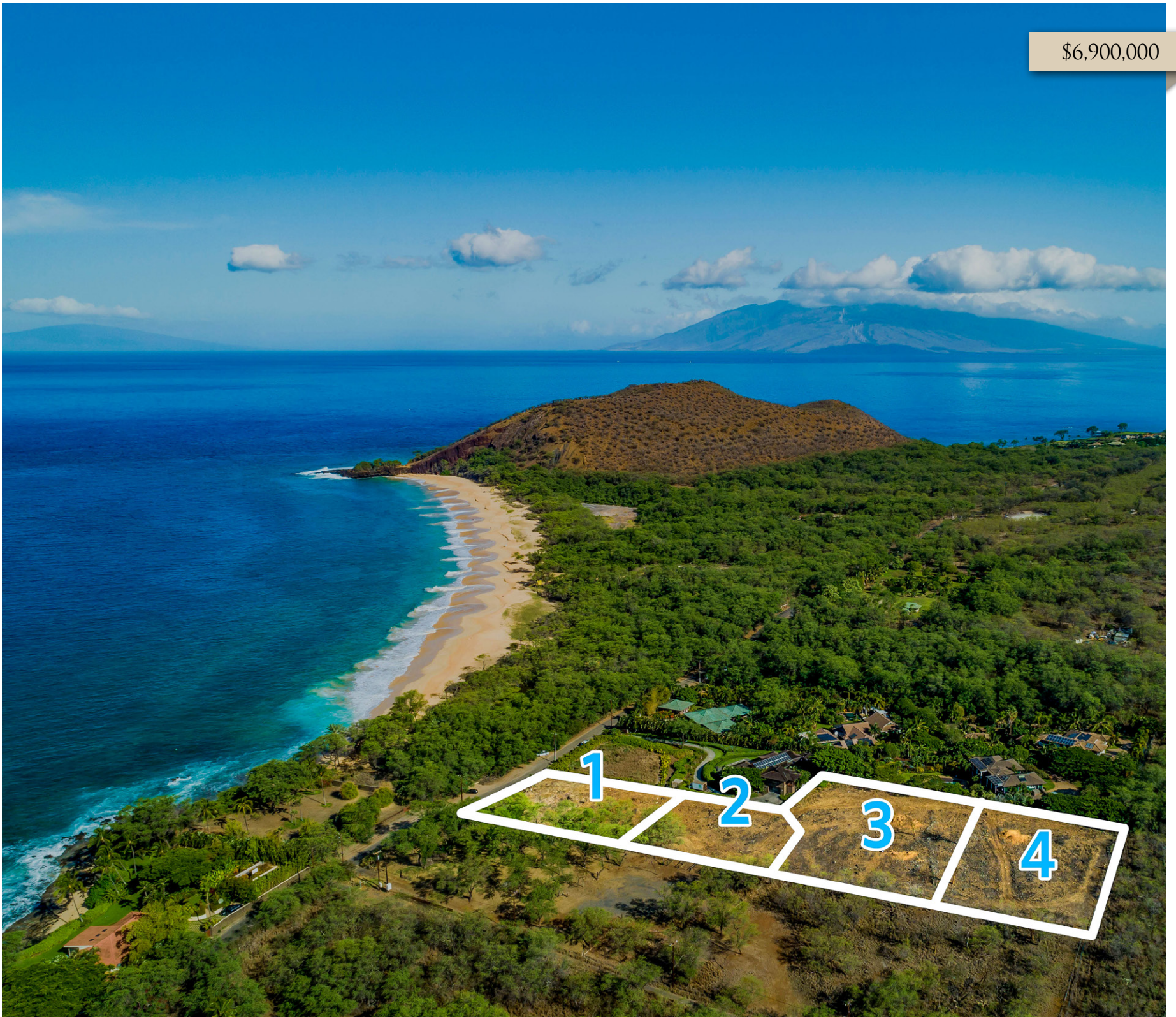
Jan Nores  
R(S) 64842  
Hawaii Life  
(808) 895-5445  
jan@hawaiilife.com



**HAWAI'I LIFE** | **CHRISTIE'S**  
REAL ESTATE BROKERS | INTERNATIONAL REAL ESTATE  
Hawai'i Life is an Exclusive Affiliate of Christie's International Real Estate.



\$6,900,000



## BIG BEACH ESTATES

Makena, Maui | 2.79AC LAND | \$6,900,000

Located on one of the most exclusive and beautiful coastlines in the world, South Maui's Big Beach Estates offer amazing views and that remote island experience with all of the conveniences of being in town just minutes away. Purchase this property as a 2.79 acre private estate or for its development potential. This is one of the last available parcels in Makena and offers a multitude of development options. The four lots are also available separately at this time, subject to final subdivision approval: Lot 1 \$2.2M, Lot 2 \$2.6M, Lot 3 \$2.8M, and Lot 4 \$3.2M.

[www.bigbeachestatesmaui.com](http://www.bigbeachestatesmaui.com)



### David W. Richardson

REALTOR(B), RB-10780  
808.870.9916 | [Dave@HawaiiLife.com](mailto:Dave@HawaiiLife.com)  
[www.MauiOceanfront.com](http://www.MauiOceanfront.com)  
HL-1 Director | "Top 2 agent on Maui 2018"



**HAWAII LIFE**  
REAL ESTATE BROKERS

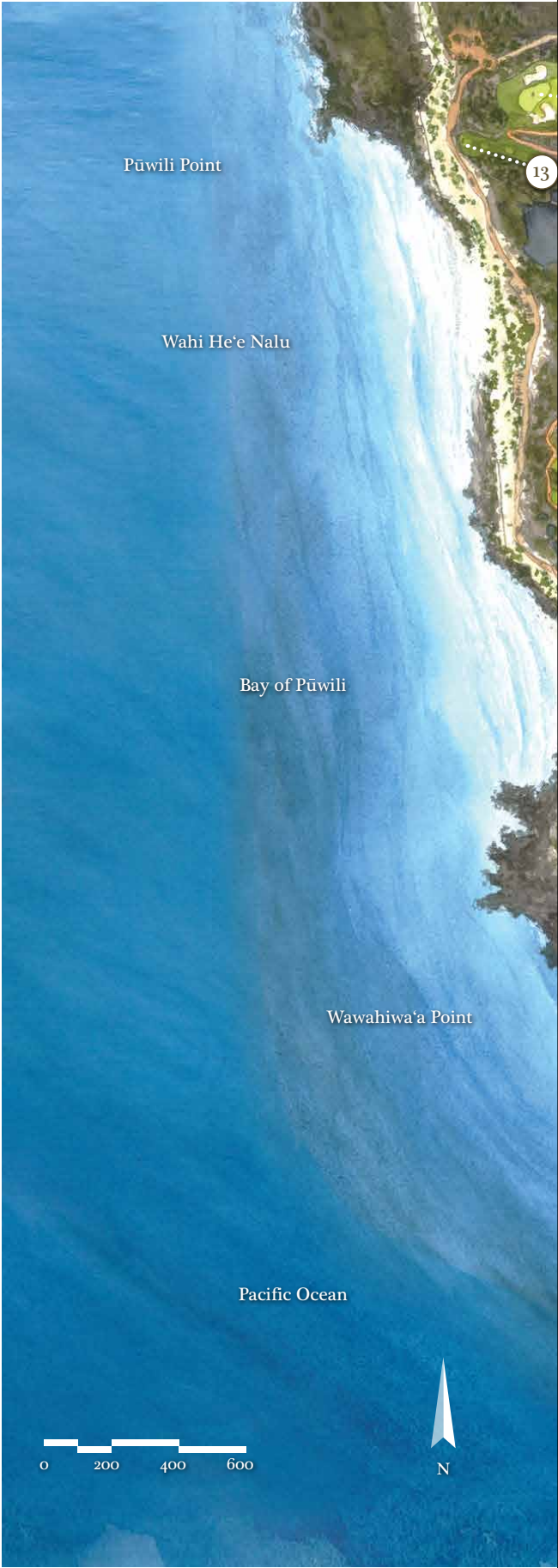
**CHRISTIE'S**  
INTERNATIONAL REAL ESTATE

### Josh Jerman

REALTOR(B), RB-19728  
808.283.2222 | [Josh@HawaiiLife.com](mailto:Josh@HawaiiLife.com)  
[www.josh.hawaiiLife.com](http://www.josh.hawaiiLife.com)







LOTS AT KOHANAIKI

Kona Kohala Coast, Big Island  
Lot 35 | MLS# 637665 | \$6,850,000 | 1.28AC  
Lot 55 | MLS# **SOLD** | \$5,500,000 | 0.91AC

Kohanaiki is situated on roughly 450 acres of land with over a mile and half of beach fronting one of Hawaii’s most productive sport fishing grounds, affectionately known as “ono lane,” and the Big Island’s finest surfing beach. The residential community & Kohanaiki Club are built around luxury, sustainability and world-class amenities. The Kohanaiki Club is a private equity club and membership is by invitation only to Kohanaiki Property Owners.

**Top Photo:** Lot 35 overlooks the 14th and 15th holes at the Kohanaiki Golf Club  
**Bottom Photo:** Lot 55 offers stunning views of Phuili Point and Pacific Ocean

LOT PHOTOS HAVE BEEN SUPERIMPOSED WITH SWIMMING POOLS.



\$6,850,000



METZLER  
REALTY



Joni J. Metzler  
(R) B

Metzler Realty  
808.640.6832

Joni@MetzlerRealty.com  
www.MetzlerRealty.com





\$6,200,000



MAUNA LANI  
RESORT NEW  
CONSTRUCTION

Kohala Coast, Hawaii | 4,725 SQFT  
4 BR/4.5 BA | MLS# 642314  
\$6,200,000

Amazing opportunity to purchase a brand new home, under construction, on the 4th fairway of Mauna Lani South course at Ke Kailani. Beautifully appointed 5 bedroom and 5 ½ baths with 4,396 sqft of living area and 2,321 sqft of covered lanai. Indoor and outdoor living at its finest! Designed to maximize the dramatic ocean, mountain and sunset views. Tropical modern design with soaring ceiling lined in Sapele, interior waterfall entry and top of the line gourmet kitchen. Infinity spa and pool with large baja deck , firepit, sunken BBQ and wet bar area with counter seating all positioned to capture the views.

\* Professional Architectural Renditions presented on some photos.



Ahmad Mohammadi  
Principal Broker RB-21131  
Hawaii Luxury Real Estate  
ahmadtmo@gmail.com  
808-640-1994



Genevieve Firestone  
Realtor Salesperson, RS-70043  
Hawaii Luxury Real Estate  
genevievefirestone@gmail.com  
808.896.4842





\$5,725,000



## MODERN LUXURY OCEANFRONT LIVING

Kailua-Kona, Big Island | 4,386 SQFT  
18,549 SQFT LAND | 5 BR/5.5 BA  
MLS# 642524 | \$5,725,000

Contemporary and green, this custom home sits gently on the Kona Coast. Sleek and elegant with soaring ceilings, its abundant windows and pocket sliders provide broad open ocean, shoreline and Hualalai Mountain views, and invite natural light and cooling trades in. With numerous fine details and unique features, this multi-level property includes: a suspended walnut staircase with structural glass landing; large block El Dorado stone walls inside and out; Unicom Starker Italian porcelain tile flooring throughout; German made Bartel custom doors; Poggenpohl custom cabinetry; saltwater pool and pond; 58-panel photo voltaic solar and much more.

**CHRISTIE'S**  
INTERNATIONAL REAL ESTATE  
2019 LUXURY SPECIALIST



**Carrie Nicholson**

Realtor®, BIC

Director, Hawaii Life One

Hawaii Life – Christie's International Real Estate

Direct: 808.896.9749 | IG: @carrierealestate

Carrie@hawaiilife.com | Carrie-Nicholson.com





\$4,995,000



## PRIVATE OCEANFRONT HOME & COTTAGE

Ma'alaea, Maui | 1,900 SQFT | .84 Acres  
2BR/2BA | MLS#387974 | \$4,995,000

This expansive, pristine, and pastoral oceanfront paradise beckons! Plantation elegance best describes this classic 1942 'retreat' which was lovingly renovated in 2011. Slightly distressed natural wood floors contrast with the whitewashed open beam vaulted ceilings creating a 'chic laid-back' elegance! Disappearing walls of glass on both sides of the home, roll back & allow you to experience a seamless indoor/outdoor lifestyle! The all white & stainless steel kitchen is warmed by the rich grain of the Monkeypod wood center island! Both bedroom & bath suites are at opposite ends & open onto the oceanfront deck that runs the length of the home. [210Hauoli.info](http://210Hauoli.info)



### Robert H. 'Robbie' Dein

Broker-Owner, ABR, CRS, RSPS | RB-18398  
Maui Real Estate Advisors, LLC  
Direct: 808.250.3564  
[Robbie@MauiRealEstateAdvisors.com](mailto:Robbie@MauiRealEstateAdvisors.com)



Maui's Only Realtor Recognized as a 'Top 100 State of Hawaii Realtor' Among 15,000 + Hawaii Realtors (for 14 Consecutive Years),  
Top 100 Hawaii Realtors Hall of Fame, Hawaii Business Journal 2006-2019

### Kenneth M. 'Ken' Hayo

Principal Broker-Owner | RB-15529  
Maui Real Estate Advisors, LLC  
Direct: 808.283.8435  
[Ken@MauiRealEstateAdvisors.com](mailto:Ken@MauiRealEstateAdvisors.com)







## WAIEA - #1501

Honolulu, Oahu | 2377 SQFT  
366 SQFT Lanai | 3BR/3.5BA  
MLS# 202021343 | \$4,888,000

At Waiea, Honolulu's world-renowned ultra-luxury condominium residence at Ala Moana Beach! Created by iconic architect James Cheng. Seclude yourself in your elevator to a one-of-a-kind 3 bedroom 3 1/2 bath corner residence. Unobstructed 270 degree views of Diamond Head, Ala Moana Beach, Kewalo Harbor. Modern global quality design & interiors by Tony Ingrao. World-class amenities include fitness centers, spas with steam, sauna & massage rooms, indoor golf simulator, private dining room, chef's kitchen, library, bar, lounge, infinity pool, private entertainment pavilions & cabanas, dog park, guest suites. Steps away from Honolulu's most vibrant shopping, entertainment, & restaurant area, this very private residence awaits you! Virtual Tour: [www.bit.ly/waiea1501](http://www.bit.ly/waiea1501)



Office License  
RB-18153

## Sachi Braden

Sachi Hawaii  
CEO, Founder, & Principal Broker | RB-16308  
808.596.8801  
[info@sachihawaii.com](mailto:info@sachihawaii.com) | [www.sachihawaii.com](http://www.sachihawaii.com)



ハワイの不動産売買、別荘管理、賃貸管理に関するお問合せは日本語でどうぞ  
サチハワイ総合不動産会社ーハワイ高級物件のエキスパート



\$4,150,000



## ROYAL PLACE RESIDENCE

Diamond Head, Oahu  
3434 SQFT | 7731 SQFT Land  
4BR/3.5BA | MLS# 202018439 | \$4,150,000

An impeccably remodeled Modern Cottage on coveted Royal Place. This move-in ready home is walking distance to the beach and with soaring ceilings, is flooded with natural light. This executive style home, features 4 spacious bedrooms, each with walk-in closets, spa-style bathrooms with natural stone finishes and a picture perfect cottage-style chef's kitchen with walk-in pantry. Lush tropical landscaping surrounds the private pool with wrap around pool deck, outdoor shower, gas BBQ-grill and lounge area. This Newport Beach style modern home is a must see! Please email listing agents for Matterport tour link.

*Email agent for property video and 3D Matterport virtual tour.*



**Noel Pietsch Shaw**  
MBA, S. Realtor-Associate, RS-75888  
HAWAII LIFE  
EXCLUSIVE AFFILIATE OF CHRISTIE'S  
INTERNATIONAL REAL ESTATE  
808.221.8889  
noelshaw@hawaiiilife.com



**HAWAII LIFE**  
REAL ESTATE BROKERS

**CHRISTIE'S**  
INTERNATIONAL REAL ESTATE



\$3,995,000



## 49 BLACK SANDS BEACH

Mauna Lani Resort, Big Island | 4,218 SQFT  
4BR | MLS# 640094 | \$3,995,000

Centrally located in the luxurious Mauna Lani Resort. The gated community of 49 Black Sands beach is just a few steps from the Black Sand Beach clubhouse with its spa, pool, kayak storage, gathering pavilion, fitness room, tennis court and the black sand beach. Enough room for the whole family to snuggle yet have alone space. 4 Bedrooms, 3,800 Sq.Ft. Great set up for multi-generational family living. Separate in-law or guest suite. Mountain, golf course and ocean views. Be sure to tour this home in 3D Link: <http://bit.ly/49BSB20a>

DISTINCTIVE  
COLLECTION

Better  
Homes  
and Gardens  
REAL ESTATE

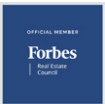
ISLAND LIFESTYLE

Eileen Lacerte

REALTOR® Broker/Owner

808.989.1862

[eileen@betterislandlifestyle.com](mailto:eileen@betterislandlifestyle.com)





\$3,980,000



HOOLEI A3

Wailea-Makena, Maui | 2,619 SQFT  
3BD/3.5BA | MLS# 387982 | \$3,980,000

A Rare & Special Opportunity to Own the Very Best – a top row Bldg A - Plumeria plan seldom becomes available. Being up front and center in your own corner of the world just doesn't get any better! The unparalleled views & privacy are simply spectacular with panoramic views of Molokini, Kaho'olawe, Lanai & West Maui Mountains. This spacious townhouse style condo lives like a residence. Furnishings and appointments designed by Bassman Blain Home give this villa an inviting atmosphere. All 3 bedrooms feature an en suite bath providing privacy within this luxurious villa.  
[www.hoolei-maui.com](http://www.hoolei-maui.com)



Diane K. Pool  
R(B)-17896, ABR, CRS  
808.276.2004  
diane@SoldOnMaui.net  
[www.SoldOnMaui.net](http://www.SoldOnMaui.net)







\$3,695,000



## A FAMILY RETREAT RESIDENCE

Wailea, Maui | 5,686 SQFT | .29 Acres  
4BR/4.5BA | MLS# 388468 | \$3,695,000

This consciously renovated, ocean view, Wailea Kialoa Home is a family resort. Upon entering, one feels a luxurious spaciousness as you glance across the electronic wall art; at the beckoning Great & Dining rooms below & above towards the master suites! A richly colored slab of specimen granite defines the dining area, adjacent to the kid's eat-in kitchen counter, which opens to the chef's dream Kitchen! Alternatively, choose to dine in the round as you gaze through four sets of 8 ft. tall double French doors, overlooking the pool, spa & gardens. Dual ocean view master suites encompass their own mini-living rooms! Solar electric, Tesla Power Wall Back-up & Wall Chargers installed!

[WaileaKialoa.info](http://WaileaKialoa.info)



### Kenneth M. 'Ken' Hayo

Principal Broker-Owner | RB-15529  
Maui Real Estate Advisors, LLC  
Direct: 808.283.8435  
[Ken@MauiRealEstateAdvisors.com](mailto:Ken@MauiRealEstateAdvisors.com)



Maui's Only Realtor Recognized as a 'Top 100 State of Hawaii Realtor' Among 15,000 + Hawaii Realtors (for 14 Consecutive Years),  
Top 100 Hawaii Realtors Hall of Fame, Hawaii Business Journal 2006-2019

### Robert H. 'Robbie' Dein

Broker-Owner, ABR, CRS, RSPS | RB-18398  
Maui Real Estate Advisors, LLC  
Direct: 808.250.3564  
[Robbie@MauiRealEstateAdvisors.com](mailto:Robbie@MauiRealEstateAdvisors.com)





\$3,480,000



## 2184 ROUND TOP DRIVE

Honolulu, Oahu | 6,274 SQFT  
13,270 Land | 4BD/5.5BA  
\$3,480,000

A Modern showpiece by Vincent Tai, AIA, Architect Featured in the February 2013 issue of HI Luxury Magazine, this inspired Makiki Heights sustainable contemporary 2-story home of 6,274 sf on 13,270 sf lot with a 20-m indoor pool is located in a quiet neighborhood on lower Round Top Drive. This HIDEAWAY, not visible from the street, is accessible by a private driveway. It is backed against the lush tropical setting at the base of Tantalus and Honolulu Watershed. A unique blend of "town and country" living with views of the ocean and the city skylines.



## Vincent T.C. Tai, AIA, Architect

RB-18219  
2184RoundTopDrive@gmail.com  
808.358.2321  
www.2184roundtopdrive.com

Photography and Video By: Oliver Koning, Hawaii Video Pro





\$3,388,000



## KE KAILANI LUXURY VILLA

Kohala Coast, Hawaii | 3,371 SQFT  
3 BR/3.5BA | MLS# 641527  
\$3,388,000

Ke Kailani 1A is a luxury villa, with new interior designer furniture and decor, positioned directly on the 5th hole of Mauna Lani Resort South Course with views of fairways and ocean. This Villa greets you with beautiful tropical courtyard entry with waterfalls and ponds. 2 Master Suites with fantastic golf course and ocean views. The Guest Suite has a separate courtyard entry. Living room with 2 story ceilings, Gourmet Kitchen and also an elevator added for convenience. Ke Kailani amenities include the exclusive Oceanfront Grotto Recreation Center with a pool, 2 spas, BBQ, dining pavilions and a full kitchen.



### Genevieve Firestone

Realtor Salesperson, RS-70043  
Hawaii Luxury Real Estate  
genevievefirestone@gmail.com  
808.896.4842

## HAWAII LUXURY REAL ESTATE MAUNA LANI RESORT OFFICE

One North Kaniku Drive  
Kohala Coast HI 96743 | RB-21156  
www.Hawaii-Luxury-Realestate.com

### Ahmad Mohammadi

Principal Broker RB-21131  
Hawaii Luxury Real Estate  
ahmadtmo@gmail.com  
808-640-1994





\$3,199,000



ONE ALA MOANA  
PH #2200

Ala Moana, Oahu | 2,651 SQFT | 3BR/3BA  
MLS# 202006993 | \$3,199,000

This luxurious penthouse offers breathtaking ocean and mountain views from an expansive, open floor plan with 10-ft high ceilings. This 3-bed, 3-bath home features his/hers walk-in closets, a large wine chiller, convection and steam ovens, laundry room with a separate service entrance, and 2 parking spots. This property truly feels like a single-family home. Enjoy the resort-like amenities such as a rooftop terrace, golf room, spa treatment, theater room, gym, infinity-pool and hot tub, several barbecue areas, jogging paths, and more. ONE Ala Moana is conveniently located above Ala Moana Center and just minutes away from restaurants, entertainment, and Ala Moana Beach Park.



**Esther H. Park**  
REALTOR®, Senior Vice President  
ABR CHMS CRS GRI SRS, RB-21002  
808.489.6733  
esther.park@sothebysrealty.com  
한국어 서비스 가능



List

**Sotheby's**  
INTERNATIONAL REALTY





## HOME OF MUSIC ICON CARLOS SANTANA

Anahola, Kaua'i | 3938 SQFT | 1.48 AC Land  
4BD/4.01BA | MLS# 639783 | \$2,995,000

Imagine waking up to cool ocean breezes as the sun rises out of the ocean almost close enough to touch! This home, currently owned by **Carlos Santana** captured his heart when he first moved to Kauai. This spectacular home and guest house on 1.48 acres is perched on a hill just high enough to have a clear view of the Ocean with the waves breaking and palms swaying as well as a view of the stunning Kalalea Mountain from the kitchen and dining room. Each of the 3 bedrooms in the main house have equally outstanding views of the vast Pacific Ocean...Want to get away?  
Video – <https://4961aliomanu.myportfolio.com>



**Emerald Isle Properties**  
Historic Plantation Stone Building  
Lighthouse Rd, Kilauea

**Harvest Edmonds**

RA, RS-56706  
Emerald Isle Properties  
808-443-8839  
[harvest@propertieskauai.com](mailto:harvest@propertieskauai.com)  
[www.eipkauai.com](http://www.eipkauai.com)







*live who you are.*

# Only our name is new to Hawaii.

Corcoran has arrived in the Aloha State.

*corcoran*

PACIFIC PROPERTIES

KAUAI | OAHU | MAUI | HAWAII ISLAND | [CORCORANPACIFIC.COM](https://corcoranpacific.com)

©2020 Corcoran Group LLC. All rights reserved. Corcoran® and the Corcoran Logo are registered service marks owned by Corcoran Group LLC. Corcoran Group LLC fully supports the principles of the Fair Housing Act and the Equal Opportunity Act. Each Office is independently owned and operated.



\$2,973,000



## MAGNIFICENT KAANAPALI HILLSIDE

Lahaina, Maui | 3,870 SQFT  
Land 10,389 SQFT | 5BD/3.5BA  
MLS # 387053 | \$2,973,000

Magnificent Kaanapali Hillside Home with Ocean & Molokai Island Views. This level of luxury is undeniably impressive and the location is absolutely world-class. Minutes to Whalers Village and world famous Kaanapali Beach, golf and fabulous dining. In the other direction, just a few minutes walk to hiking and biking trails and up into the West Maui rain forest preserve; a world class hike. A million dollar renovation was just completely with no expense spared on top quality finishes throughout, such as: all Thermador appliances (including built-in espresso machine), double sinks in all bathrooms, all custom cabinetry, solid wood flooring throughout, the list goes on and on!  
[www.60southpikiplace.com](http://www.60southpikiplace.com)



**JENNIFER RICE**  
HAWAII BIG ISLAND REALTOR

*corcoran*

PACIFIC PROPERTIES



**Jennifer Rice**  
RS-72112  
Corcoran Pacific Properties  
Direct: 808-333-6977  
Email: [Jennifer@KonaLuxHomes.com](mailto:Jennifer@KonaLuxHomes.com)







A HIGH-STYLE ENTERTAINING KITCHEN  
FOR ISLAND LIVING.  
SEE PAGE 53



\$2,790,000

4303



## WAIHONUA GPH #4303

Kaka'ako, Oahu | 1,935 SQFT | 3BR/2BA  
MLS# 202004402 | \$2,790,000

Masterful design and modern luxury are uniquely embedded in this soaring 3-bed, 2-bath Grand Penthouse unit, which sits atop Waihonua Condominium. This airy and light-filled home features stunning floor-to-ceiling windows providing breathtaking ocean views, 11-foot ceilings, and spacious living and dining areas—perfect for entertaining. The kitchen includes a full pantry, polished granite countertops, and Bosch stainless-steel appliances. As the premier residence in this building, this unit is uniquely afforded 2 front entrance parking spots equipped with EV charger and an extra storage room. Amenities: private movie theater, infinity edge pool, fitness center, barbecue cabanas, and more.



List

**Sotheby's**  
INTERNATIONAL REALTY



**Esther H. Park**

REALTOR®, Senior Vice President  
ABR CHMS CRS GRI SRS, RB-21002  
808.489.6733  
esther.park@sothebysrealty.com  
한국어 서비스 가능





\$2,495,000



FIND SERENITY  
~ MOANI HEIGHTS

Uplands at Mauna Kea, Big Island | 2896 SQFT  
4BR/4BA | MLS# 641825 | \$2,495,000

Moani Heights is located in a small gated community on the slopes of Mauna Kea Resort. The cul-de-sac location allows for quiet island living and easy access to all that resort living has to offer! Step through the gated entry into a serene shaded courtyard where tranquility abounds. As you walk towards the front door, you are greeted with tropical plantings and statuary that set the scene for what's inside! Understated elegance best describes this home, both inside and out....



Erik & Romy Jacobson  
RB-21678, RB-21677  
Corcoran Pacific Properties  
808.345.9033 / 808.345.9989  
Erik@JacobsonTeamHawaii.com  
www.JacobsonTeamHawaii.com



The Jacobson Team  
Hawaii Island Living



corcoran  
PACIFIC PROPERTIES





## ANAHA PENTHOUSE #3508

Honolulu, Oahu | 927 SQFT  
1BR/1BA | MLS# 202017567  
\$2,088,000

Exquisitely custom-designed Penthouse in Ward Village's ultra-luxe Anaha. This fully re-imagined residence includes Studio Bel Vetro custom chandeliers in the living room & bedroom, plus kitchen & bathroom fixtures with over 1,000 hand-blown glass orbs, hand crafted Italian Snaidero custom lacquer cabinetry in the living room, bedroom & bathroom, high gloss & hand finished ceilings, Phillip Jeffries metallic grasscloth wallpaper throughout, Brody Oak wide-plank hardwood flooring, integrated audio system, hand-carved custom sconces by Luxe Lighting, & much more. Unique to the 35th floor & the highest in Anaha, 11-ft ceilings. Virtual Tour: [www.bit.ly/anaha3508](http://www.bit.ly/anaha3508)



## Vince Vanderstroom (RA)

Sachi Hawaii Luxury Premier  
Realtor Associate, RS-58374  
808.778.0065  
[vince@sachihawaii.com](mailto:vince@sachihawaii.com)  
[www.sachihawaii.com](http://www.sachihawaii.com)





\$1,998,000



## KALELE KAI TOWNHOUSE

Hawaii Kai, Oahu | 2,222 SQFT

3 BR/2.5 BA | MLS# 202020581 | \$1,998,000

This townhouse offers the best of both worlds: the benefits of a single-family home combined with the amenities, security and ease of ownership of a condominium! Treat yourself to gorgeous waterfront marina views as well as the access to marina activities. Exquisitely renovated from top to bottom, you'll love the gourmet kitchen with Sub-Zero and Miele appliances, Downsview cabinets and quartz countertops. The private master suite encompasses the marina front bedroom, lanai, sitting area loft and an elegant bathroom complete with washer/dryer. You'll enjoy amenities including a swimming pool with whirlpool spa and Clubhouse with facilities to entertain, including a kitchen and barbecues.



**Jeffrey M. Fox**

(R) CLHMS, CRB, CRS

Corcoran Pacific Properties

RB-17230

808.292.5333

Jeffrey.Fox@corcoranpacific.com

*corcoran*

PACIFIC PROPERTIES



\$1,965,000



# MAUNA LANI POINT F102

Mauna Lani Resort, Big Island | 1,555 SQFT  
2BR/2.5BA | MLS# 639510 | \$1,965,000

Oceanfront living in a beautiful setting! This lower level unit in a prime location at the Point has been fully renovated with great attention to detail and delightful custom features. Enjoy a tranquil, private environment open to dramatic views. Unobstructed ocean, fairway, Maui and sunset views year round complete the quality Island living everyone is looking for! All within a gated community with access to all the Resort amenities.



**Margery Mayo**  
REALTOR® Broker in Charge | RB 17852  
68-1330 Mauna Lani Drive, Suite 130  
Kohala Coast, HI 96743  
www.HapunaRealty.com  
margerymayo@margerymayo.com  
808.987.6385





\$1,680,000



UNIQUE  
OCEANFRONT  
RETREAT AWAITS  
YOU

Hakalau, Big Island | 3,707 SQFT  
96,224 SQFT Land | 6BR/6.5BA  
MLS# 638265 | \$1,680,000

This Hamakua Coast home is one of a kind! Enter by electric gate, the driveway is surrounded by lush tropical landscaping and organic fruit orchard. Exclusive engineering went into the solid construction of the home. 2 houses: A total of 6 bedrooms and 6.5 bathrooms, nearly 5800 sqft under roof! Whether observing spinner dolphins and humpback whales dancing in the deep blue sea or the snowing mountain view in the winter months or watching a breathtaking sunrise year round from nearly every room, make this retreat as your home.

Many DWARF TROPICAL FRUIT TREES in the organic orchard.



Maggie Zhang, 张羽 MBA, Green  
R(S), RS-66844  
Corcoran Pacific Properties  
808.938.8378  
maggie.zhang@corcoranpacific.com

歡迎來電諮詢夏威夷地產。精通英語，國語，上海話。





## NORTH SHORE BEACHFRONT PENTHOUSE

Waialua, Oahu | 1,199 SQFT | 180 SQFT Lanai  
2BR/2BA | MLS# 202003378 | \$1,000,000

\$20,000 CREDIT TOWARDS BUYER'S CLOSING COSTS - Penthouse condo fronts sandy beach with protective outside reef and surfing in the wintertime where spectacular waves break. Watch whales breach through the winter months. Mauka bedroom en-suite, and Makai bedroom en-suite luxury with covered lanai condo with open concept living, dining, kitchen areas and large storage room off the entry area. **Price offered at \$1,000,000 Fee Simple (FS)**



**Mary Anne Bruno**

RB.15787, REALTOR Principal Broker CNE president

Cell: 808.282.2583

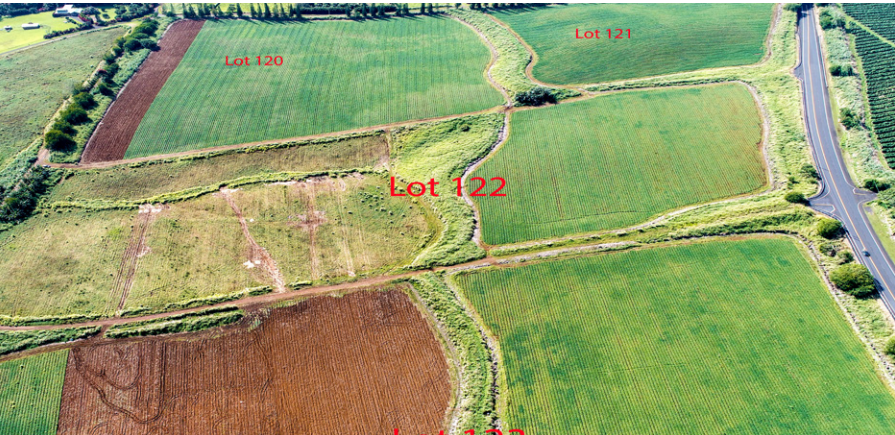
@ma2822583HI

ma2822583@MOKULANIproperties.com

www.MOKULANIproperties.com







## PEPEEKEO, BIG ISLAND | LAND

Ag lots with limitless potential for a self-sustaining farmstead, a luxury estate home, your cabin in the country, fruit orchards, and all with spectacular ocean views.  
Lot 70-A (parcel 117): \$409,000 | Lot 70-B (parcel 118): \$409,000 | Lot 70-C (parcel 119): \$409,000 | Lot 70-D (parcel 120): \$330,000 | Lot 70-E (parcel 121): \$330,000  
Lot 70-F (parcel 122): \$330,000 | Lot 70-G (parcel 123): \$330,000 | Lot 70-H (parcel 124): \$370,000



**Donna Duryea**  
R(S) 62459, CRS, GRI, ABR  
808.987.4511  
Donna@DonnaDuryea.com  
DonnaDuryea.com

*corcoran*  
PACIFIC PROPERTIES

Listed By  
**The Duryea Group**



**Meg Saunders**  
R(B) 19200  
808.895.3147  
Meg.saunders@corcoranpacific.com  
hawaii.corcoranpacific.com







RARE OFFERING



**MAUI GOLD COAST-TWO OCEANFRONT PARCELS**

**Kihei, Maui | 30,056 SQFT Land | MLS# 388360**

**RARE OFFERING.....2 parcels at the very north end of a quiet residential street. Over 205 LINEAR FEET of frontage in this epic beachfront setting!! 2 contiguous lots comprising 30,035 sq.ft.; lot #1 is 18,527 sq.ft. and lot #26 is 11,508 sq.ft. Seller's preference is to sell as one. The land is perched on a small knoll maximizing views of the West Maui Mts and stellar year round sunsets. All utilities to site. Price upon request.**





A modern dining room with a large window overlooking the ocean at sunset. The room features a white dining table with white chairs, a large potted plant on the left, and a wooden cabinet on the right. The view outside shows a beach, trees, and the ocean under a colorful sky.

LIFE TAKES ON NEW MEANING  
*when your home is on the beach.*

And not just any beach, but the best on the Big Island, at the legendary Mauna Kea Resort. Residences are supremely private, exquisitely appointed and graced by lavish resort amenities. These are the last and most rare absolute beachfront residences in all of Hawaii. Awaken to the sound of the waves. From \$1.8M to \$9M.



20+ residences in escrow



# Hapuna Beach Residences

AT MAUNA KEA RESORT

808.557.8689    [Info@MaunaKeaLiving.com](mailto:Info@MaunaKeaLiving.com)    [MaunaKeaLiving.com](http://MaunaKeaLiving.com)

*When not in residence, properties may be placed in the resort rental program.*



\$8,475,000



PUAKO'S  
PREMIER LUXURY  
BEACHFRONT HOME

Puako, Big Island | 4,416 SQFT  
16,285 SQFT Land | 4BR/5+2HLF BA  
MLS# 640347 | \$8,475,000

Hale Nana Kohola (The Whale Watch House) is Puako's premier luxury beachfront vacation home with gorgeous ocean, sunset, Kohala and Maui views. There is nowhere more beautiful to spend your days! The resort/hotel zone allows a 45-foot building height, allowing this dramatic architecture with an observation deck where you can enjoy whale watching. This tropical retreat offers 4 suites + media room with full bath, heated infinity saltwater pool, office, and 1,715 SQFT of lanais in beautiful and private tropical garden settings. This popular vacation home with approved STVR registration has exceptional rental history with repeat clientele. Offered furnished.



**Tomoko Matsumoto**  
REALTOR® Principal Broker, Owner  
Hapuna Realty  
68-1330 Mauna Lani Drive, Suite 130 Kohala Coast, HI 96743  
[www.HapunaRealty.com](http://www.HapunaRealty.com) | [Tomo@HapunaRealty.com](mailto:Tomo@HapunaRealty.com)  
808.557.8689







\$19,900,000



## BRAND-NEW CONTEMPORARY LUXURY BEACHFRONT ESTATE

**Puako, Big Island | 5,360 SQFT  
2.007 AC | 5BR/6+2HLF BA  
MLS# 640170 | \$19,900,000**

Puako Bay Lot 1, known as Kahieluana (a place to relax and enjoy the company of loved ones), is one of the most amazing offerings in the area. The brand-new, contemporary yet comfortable residence is located on a terraced and elevated 2+ acre bayfront parcel in charming Puako on the Kohala Coast. It is the ultimate dream estate with 5 master bedrooms + a bunk room/office, tennis court, swimming pool, sand volleyball court, and small black sand bay in front! Amazing sea life abounds in the nearby reef with turtle cleaning stations, colorful tropical fish, and manta and spotted eagle rays. Beach 69, a local secret, is only a 10-minute walk. Offered furnished.

**Tomoko Matsumoto**  
REALTOR® Principal Broker, Owner

Hapuna Realty

68-1330 Mauna Lani Drive, Suite 130 Kohala Coast, HI 96743

[www.HapunaRealty.com](http://www.HapunaRealty.com) | [Tomo@HapunaRealty.com](mailto:Tomo@HapunaRealty.com)

808.557.8689





# LUXURY HOME

M A G A Z I N E

6800 Kalanianaʻole Hwy., Suite 101 Honolulu, HI 96825

# LUVA

R E A L E S T A T E

Luxury Experience For All Clientele  
Locally Owned And Internationally Represented

[luvarealestate.com](http://luvarealestate.com)

## BIG ISLAND

75-240 Nani Kailua Drive Suite 8  
Kailua Kona, HI 96740  
Phone: (808)769-5111

## OAHU

970 N Kalaheo Avenue, Suite A110  
Kailua, HI 96734  
Phone: 808.262.LUVA (5882)