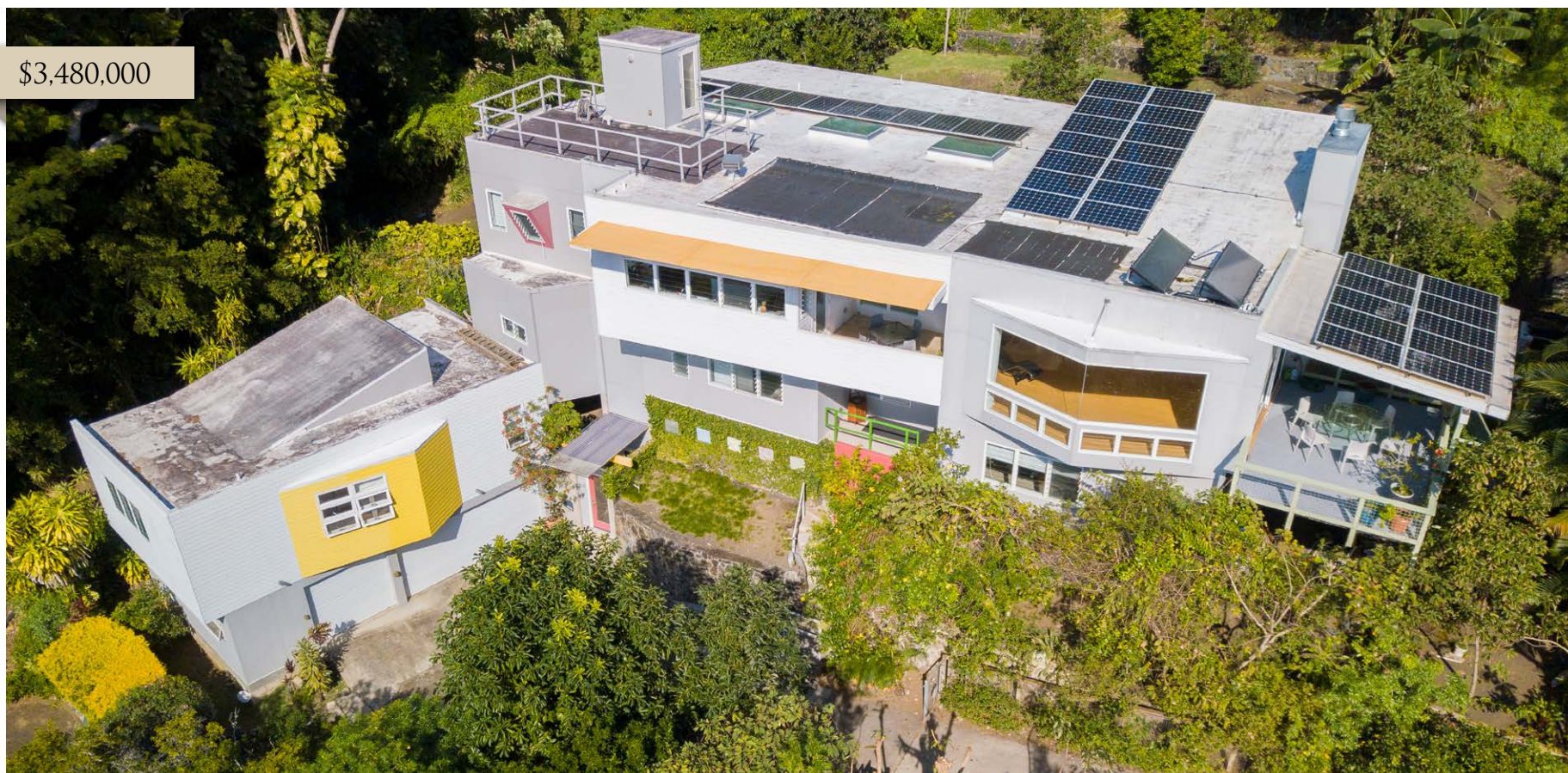


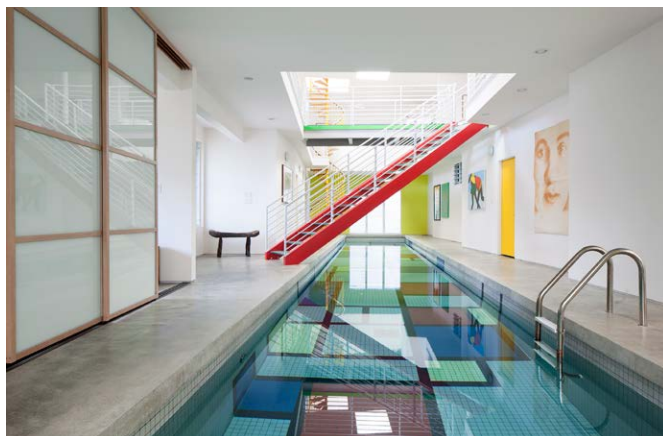
\$3,480,000



2184 ROUND TOP DRIVE

Honolulu, Oahu | 6,274 SQFT
13,270 Land | 4BD/5.5BA
\$3,480,000

A Modern showpiece by Vincent Tai, AIA, Architect Featured in the February 2013 issue of HI Luxury Magazine, this inspired Makiki Heights sustainable contemporary 2-story home of 6,274 sf on 13,270 sf lot with a 20-m indoor pool is located in a quiet neighborhood on lower Round Top Drive. This HIDEAWAY, not visible from the street, is accessible by a private driveway. It is backed against the lush tropical setting at the base of Tantalus and Honolulu Watershed. A unique blend of "town and country" living with views of the ocean and the city skylines.



Vincent T.C. Tai, AIA, Architect

RB-18219
2184RoundTopDrive@gmail.com
808.358.2321
www.2184roundtopdrive.com

Photography and Video By: Oliver Koning, Hawaii Video Pro