

LUXURY HOME[®]

M A G A Z I N E

Hawai'i KAUAI • OAHU • MAUI • MOLOKAI • LANAI • BIG ISLAND

ISSUE 15.6



LUXURYHOMEMAGAZINE.COM

Cherished Pono Makena at 7750 Makena Road, Maui
Amber Lee, Corcoran Pacific Properties | Pages 14-15



\$3,495,000

4583 Waikui St, Honolulu, HI 96821

■ 4 BD, 3.5 BA, 3,439 sf. Lot 15,000 sf.

Looking for an elegant home with striking golf course views and resort inspired outdoor living, this may be your answer. A stunning single level 3-bedroom/3.5-bath home features an open floor plan where luxury abounds. This thoughtfully designed house offers a private and gated porte-cochère, gourmet kitchen, dining room, family room, living room, and a serene tatami room. A wall of windows invites our island beauty to flow seamlessly inside this architectural gem. And what an outside it is! Impressive outside features include an expansive flagstone patio, large pool and jacuzzi spa, perfect for either elegant or informal entertaining. Just beyond the pool and patio, enjoy a breath-taking 130-foot-wide view of the Waialae Golf Course, giving you front row seats to world class golfing, including The Sony Open. The elegance of the home is evident in the custom trim, architectural design, and high ceilings. The practicality is evident in the rooftop solar PV. Located on a 15,000-sq. ft. lot, this home at 4583 Waikui Street is convenient to the Kahala Shopping Center and Kalani High School, with easy access to the H1 Freeway and Kalanianaʻole Highway. A unique home not to miss!



John "Jack" Tyrrell
President
Principal Broker, CRS, CRB
CPA (not in public practice)
Lic. # RB-19880
E: Jack@jtchawaii.com
C: 808.306.6933



May Lew Tyrrell 廖富漢
Executive Vice President
Broker-In-Charge, MBA, GRI, CRS, CRB, CIPS
Lic. # RB-22693
WeChat: Mayinhawaii (普通话)
E: May@jtchawaii.com
C: 808.223.3364



ANAHHA unit 2801, \$3,380,000

■ 3 BD, 3 BA, 1,939 sf.
■ Ocean, Mountain, Beach Park, Marina, Sunset & City Views

Enjoy breathtaking views of the ocean, Ala Moana Beach Park, and the magnificent coastline the moment you walk into this well-appointed 3 bedroom/3 bath, 1,939 sq ft corner/end unit. This luxurious unit features 9-foot ceilings, floor to ceiling windows and is designed to efficiently utilize space. The foyer leads to the bright and airy kitchen, which features a complete suite of Miele appliances, including a gas range, steam oven, and a dish warmer. The Juliette balcony in the dining area allows cooling trade winds to flow through. Two assigned parking stalls and a storage room are included. Anaha boasts a distinctive architectural building design, a one acre amenities deck, and concierge services. Wholefoods Market is located across the street.



AE`O unit 3700, \$2,288,000

■ 3 BD, 3 BA, 1,331 sf.
■ Ocean, Mountain, Beach Park, Marina & Sunset Views



HAWAIIKI TOWER unit 3707, \$1,290,000

■ 2 BD, 2 BA, 1,138 sf.
■ Diamond Head, Ocean, Beach Park, Marina & Sunrise Views



For More Information:
808 532 3330
www.jtchawaii.com

f Jack Tyrrell & Company
@jtchawaii
@jtchawaii

JACK TYRRELL & COMPANY

A Real Estate Brokerage Corporation

* The information presented herein is provided as is, without warranty expressed or implied of any kind. Information herein deemed reliable but not guaranteed.

\$6,850,000



447 PORTLOCK ROAD

Honolulu, Oahu | 8,628 SQFT
17,529 SQFT Land | 4BR/5BA/2HLF BA
MLS# 202027240 | \$6,850,000



Coastal Island Retreat... Start living your best life ever from this gorgeous oceanfront residence offering over 8,000 sq ft of luxury indoor/outdoor living spaces. A timeless design offers a 4-bedroom + den, 5-full and 2-half bath floor plan complete with home office and multiple formal and casual living areas throughout. Lovely mature trees and tropical landscaping complete this island residence all situated on a spacious parcel of over 17,500 sq ft complete with a 3-car garage and large motor court providing ample parking for all. This is the life!



\$17,975,000



3249 DIAMOND HEAD ROAD

Honolulu, Oahu | 10,310 SQFT
23,469 SQFT Land | 6BR/7.5BA
MLS# 202020621 | \$17,975,000



Idyllic and highly acclaimed, this prized oceanfront residence in Diamond Head offers over 9,000 square feet of luxury living with incomparable views and 3 stories with an elevator, on over a half acre of land with 183 linear feet of ocean frontage. Through a gated circular entry, you'll drive into the stately porte-cochère with dual, 2-car garages revealing a lush green grotto, and cascading water features. The oceanfront pool/spa is surrounded by palms, tropical foliage, and cascading water features. The serene grounds also feature access leading to the sea and sandy shoreline. Sensational!



Wishing you all the best

this holiday season...

Tracy Allen
Vice President, RA, RS-46610
Global Luxury Ambassador
Luxury Property Specialist
808.927.6415
Tracy@CBRealty.com
www.TracyAllenHawaii.com



\$5,300,000



3003 KALAKAUA AVENUE #11B

Honolulu, Oahu | 2,225 SQFT | 2BR/2BA
MLS# 202029329 | \$5,300,000



Stunning residence at the most sought-after building on the Gold Coast! Extraordinary, contemporary 2 bedroom, 2 bath + large den apartment at the ocean's edge offers expansive views of the Pacific, Waikiki coastline, iconic Diamond Head & Kapiolani Park while offering great privacy & security. Designed by architect John Black, it was completely rebuilt with exacting detail & quality. Expansive spaces are ideal for everyday living or fabulous entertaining with glorious sunsets & sailboats gliding by. Step out your back door to surfing, biking, jogging or take an easy walk to Waikiki for world class shopping & dining. This special property provides a lifestyle truly unlike any other...



Tracy Allen
Vice President, RA, RS-46610
Global Luxury Ambassador
Luxury Property Specialist
808.927.6415
Tracy@CBRealty.com
www.TracyAllenHawaii.com



© 2020 Coldwell Banker Realty | 1314 S King Street, 2nd Floor Honolulu, Hawaii 96814 | (808) 927-6415 The information contained herein, while not guaranteed, has been obtained from sources believed to be reliable. All square footages are approximate and may differ from the tax records.



\$1,375,000



KA'ANAPALI ALII UNIT #4-101

Ka'anapali, Maui | 1,439 SQFT
1BR/2BA | MLS# 387694 | \$1,375,000

Experience the perfect combination of elegance and beachfront living from this private luxury condominium. Conveniently located on the ground floor, Ka'anapali Alii Unit #4-101 enjoys lush garden views and is just steps to the white sand of the world famous Ka'anapali Beach. This smartly designed one bedroom condominium lives like a two bedroom residence as it also features a spacious den with an additional en-suite bathroom. Upgrades include custom cabinetry, granite countertops, stylish tile accents, stainless-steel appliances and much more. Call your favorite Realtor to schedule your private showing in this spectacular Ka'anapali beachfront community today!



Leah Harbottle
Realtor®-Broker, Lic. #22910
Cell: 530.906.9180
Toll Free: 866.661.7887
Fax: 808.661.8358
Leah-Whalers@KW.com
www.KaanapaliLuxuryLiving.com

Gregory Harbottle Inc. R (PB)

Luxury Property Specialist, Lic. #19615
Cell: 808.385.8059
Toll free: 866.661.7887
Fax: 808.661.8358
ghrhkh@msn.com
www.KaanapaliLuxuryLiving.com





* Founding or Prestigious Member



THE BIG ISLAND

- Ahmad Mohammadi
- Carrie Nicholson
- Donna Duryea*
- Eileen Lacerte*
- Erik & Romy Jacobson
- Genevieve Firestone
- Hapuna Beach Residences
- Jan Nores
- Joni J. Metzler*
- Kohanaiki
- Maggie Zhang
- Margery Mayo*
- Meg Saunders
- Tomoko Matsumoto*

THE ISLAND

Harvest Edmonds

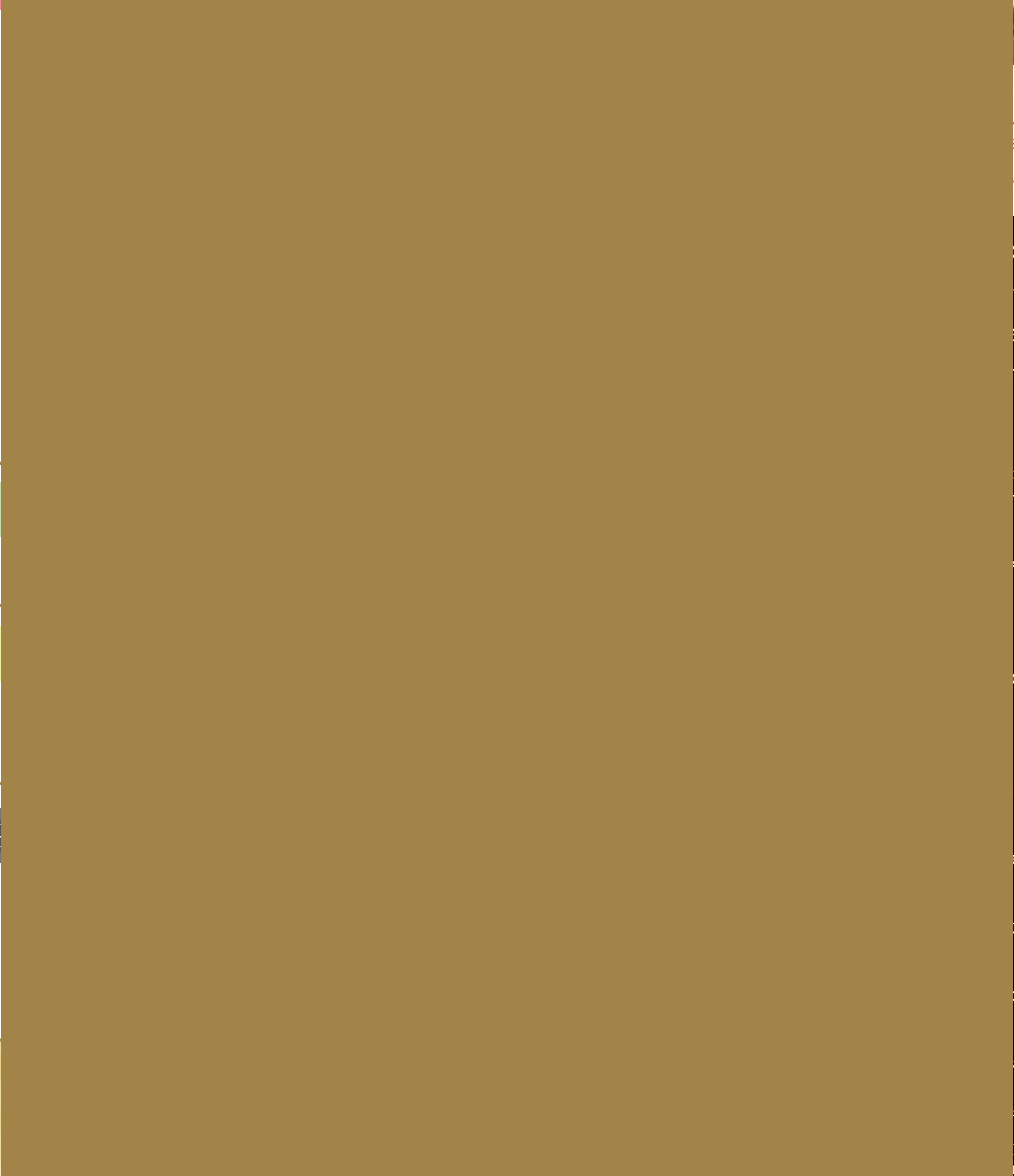
THE ISLAND

- Mary Anne Fitch*
- Nam L. Le Viet*

BUSINESS PARTNERS

- Corcoran Pacific Properties
- LUVA Real Estate
- Padilla Designs, LLC*

THE ISLAND OF OAHU



Next Dead

ER HOME
ach, Hawaii Island
& 19
www.spaces808.com

OF HAWAII™
101
6.404.8867
TION VISIT:

oution in the area, bar none!

INC.
4

om

log

group.com

diagroup.com

com

, Inc.

and LuxuryHomeMagazine.com are
and LHM Media Group. Publisher is an
market specific area of Luxury Home
LuxuryHomeMagazine.com. Publisher is Li-
Media Group, Sunshine Publications,
Inc. and LHM Media Group are not responsible for the contents of the magazine or the acts
or omissions of the publisher or its representatives and makes no representations or guaran-
tees. Reproduction in whole or in part (including materials, photos and formats) in any form
without written permission from Sunshine Publications, Inc. and LHM Media Group is pro-
hibited. All submissions become the property of Sunshine Publications, Inc. and LHM Media
Group and may be used in any print, digital, social and online media. All rights reserved.

The information contained in *Luxury Home Magazine* is deemed
reliable, but not guaranteed. Contact each individual agent to verify
information, which is subject to change.

Made and Printed in the USA.

Oahu

\$45,000,000



DILLINGHAM RANCH
NORTH SHORE OAHU

Mokuleia, Oahu | 2,740 AC
MLS# 202026844 | \$45,000,000



The historic Dillingham Ranch is a rare land offering comprising nearly 2,740 fee simple acres on O'ahu's spectacular North Shore. Offering views of Ka'ena Point and the world-famous surfing beaches and North Shore coastline, this working ranch extends from the white sands at Kai'ahulu Beach to the ridgeline of the Waianae Mountain range. Bordering the Mokule'ia Forest Reserve, Dillingham features miles of private trails and roadways for on-site hiking and biking, with easy access to incredible snorkeling, ocean swimming and surfing, watersports, boating, diving, golf and beaches.



Matt Beall
PRINCIPAL BROKER, RB-17738
Hawai'i Life Real Estate Brokers
Direct: 808.346.7413
Email: matt@hawaiilife.com

LuxuryHomeMagazine.com

Meet the People Behind the Magazine

2006

In 2006, publishers Tor and Kaleb, who attended Elementary in Hawaii, started one of the great real estate publications. The inaugural *Luxury Home Magazine Hawaii* featured the best of the island and the rest is history. Over the years, the Lam family and family milestones have been now in college pursuing engineering (Kaleb). The economic and real estate market has been creating the best industry. Some of who have been the clock, Tor is active in the Program while Danyel



What a wild ride it has been! As our day-to-day lives and routines continue to change, we are happy to help by showing up and showcasing homes. Since its debut in 2006, *Luxury Home Magazine* has worked with many incredible home industry professionals and a host of people behind the scenes to make the magazine come to life. We are grateful to the designers, client concierges, distributors, accountants, printers, and the USPS, who make sure we can create a beautiful product and deliver it into the hands of buyers and sellers who want to live aloha. Although it takes a village to produce *Luxury Home Magazine*, there are a few names and faces that have been present for well over a decade. Here, we give you a glimpse at the people behind the magazine.

Mahalo,
Maresa Giovannini
Maresa Giovannini
Editor in Chief



Luxury Home Magazine is a free subscription service for those who want to know about the best of the island.

each island, she currently lives with her husband Cody (a helicopter pilot) and pup Evie (a terrier) in Northern California. When her nose isn't stuck in a magazine, Maresa loves to travel, thrift for vintage treasures, bird-watch, and spend time with her family.

Kauai

\$29,750,000



5156 WEKE ROAD,
HANALEI BEACHFRONT

Hanalei, Kauai | 4,758SQFT | 1.1 AC
5BR/5.5BA | MLS# 644158 | \$29,750,000

Situated in one of the most desirable locations on Hanalei Bay, on a large 1.1-acre lot, this spacious beachfront home has unsurpassed views of the crescent arch of the Bay, breaking surf, majestic waterfall-clad mountains, and the setting sun. Private and secure, with a gated entry, the estate character of the property is tangible in every respect. Licensed Vacation Rental (TVR).



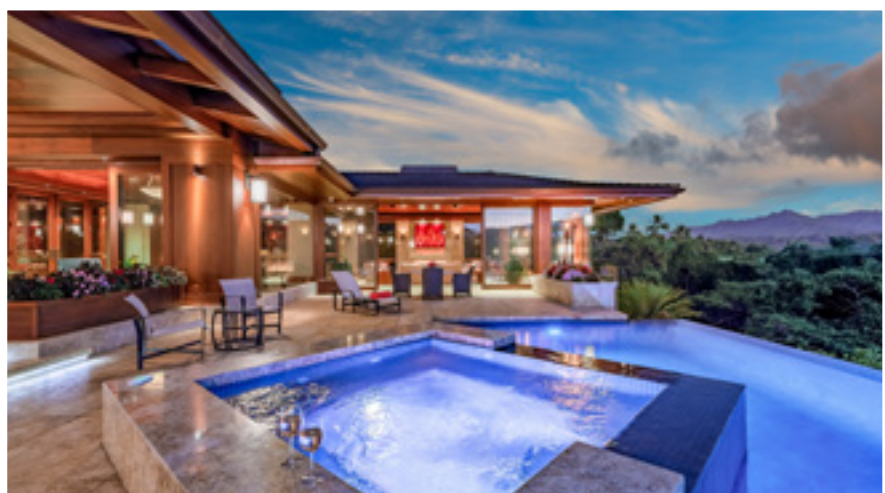
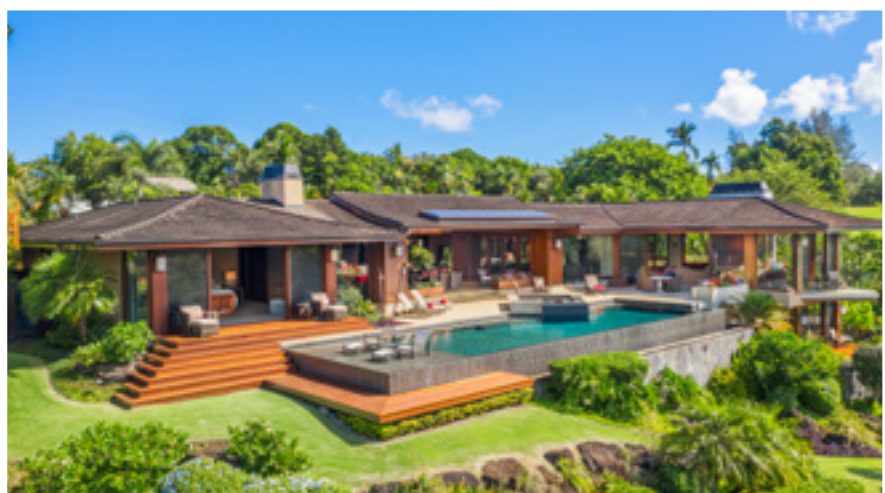
Ben Welborn
REALTOR(B), RB-19358
Hawaii Life
808.639.7978
Ben@HawaiiLife.com
Hi.HawaiiLife.com

I  My Hawai'i Life

2 Top Agents = 1 Solid Team. Visit [HI.HawaiiLife.com](https://hi.hawaiiLife.com) for more information, photos, and videos about these and other Kauai properties.



\$27,750,000



5121 HANALEI PLANTATION ROAD

Hanalei, Kauai | 8,173 SQFT | 35,284 SQFT Land | 4BR/4.5BA | MLS# 642508 | \$27,750,000

Once in a great while, a truly exceptional property becomes available. 5121 Hanalei Plantation Road is such a property. The location enjoys unparalleled views of Hanalei Bay with its gentle sweeping arch of sand and dramatic mountain backdrop. Graced with rainbows, sunsets, passing storms, tranquil sunrises, waterfalls, gigantic surf, and sailboats dancing in the Bay — this location takes it all in.

Then, there is the home itself — functional, island elegance at its best. The studied architecture complements the site perfectly, framing the views and inviting them into the living spaces of the home. The “wow factor” is apparent from the moment you enter the spacious, outdoor living area, which is the focal point of the entire property.



I  My Hawai'i Life

2 Top Agents = 1 Solid Team. Visit [Hi.HawaiiLife.com](https://hi.hawaiiLife.com) for more information, photos, and videos about these and other Kauai properties.

Ben Welborn
REALTOR(B), RB-19358
Hawaii Life
808.639.7978
Ben@HawaiiLife.com
[Hi.HawaiiLife.com](https://hi.hawaiiLife.com)



YOUR SANCTUARY ON THE KONA COAST



HOME HAPPENS HERE.

Nestled on the idyllic Kona coastline of the Big Island of Hawai'i, the exclusive community of Kohanaiki features a 67,000-square-foot private clubhouse & spa, 18-hole Rees Jones golf course, adventure team, beach club, organic community farm and exquisite dining, all within 450 acres of oceanfront luxury estates. Homes designed by renowned architects like Shay Zak, Khoi Le and Jim McLaughlin are inspired by the rugged landscape of ancient lava flows, panoramic ocean views, and the ever-present Kona sunshine. Discover your new sanctuary at Kohanaiki. **From \$2.8 Million.**

Access to and use of the golf course and other private amenities at Kohanaiki Club is available only to members of the Kohanaiki Club and are subject to the payment of additional fees. Membership to the Kohanaiki Club is by invitation only and is not included with a purchase of a property. No representation or warranty is made regarding whether a purchaser will qualify for such membership. Obtain the Property Report or its equivalent required by Federal and State law and read it before signing anything. No federal or state agency has judged the merits or value, if any, of the property shown in this brochure. WARNING: THE CALIFORNIA DEPARTMENT OF REAL ESTATE HAS NOT INSPECTED, EXAMINED, OR QUALIFIED THIS OFFERING. Kohanaiki Realty LLC, 73-2055 Ala Kohanaiki, Kailua-Kona, HI 96740.



Call for your private tour
(888) 406-1256 | kohanaiki.com/kona



Cover Home

Pono Makena 7750 Makena Road, Maui



Makena, Maui | 3.23 Oceanfront Acres | MLS# 388759 | \$24,000,000

Located on 3.23 acres of stunning oceanfront, Pono Makena is a secluded and cherished property of Hawaii. Charged with a sense of serenity and wellbeing, this gated haven provides a uniquely expansive canvas for self-expression and creativity, while supporting connection with the timelessness of nature. Perfectly balanced and impeccably maintained, this property offers three generous parcels, making it ideal for a family compound and easily accommodating large art installations or additional structures. With the potential to CPR the property into separate lots, you may choose to pursue building your dream style home or homes on this magnificent and unparalleled amount of oceanfront acreage. Live the life you love with those you love in an absolutely magical setting, spectacular

sunrises and dazzling sunsets, and night skies so clear you can reach out and touch the stars. Adjacent to the serene, deep azure waters of Ahihi Bay Natural Area Reserve, the property offers direct ocean access and unfettered opportunity to revel in swimming, SUP paddling, kayaking, and snorkeling in front of your home. Impressive in its exclusivity, Pono Makena is still just minutes away from internationally loved Big Beach and all the luxurious amenities of the world-renowned Wailea Resorts, where fine dining, grand golf courses, tennis courts, luxurious Four Seasons spa, and pools await. Leave the loud noise of world events behind and savor the safety and security of utmost privacy and beauty at 7750 Makena Rd., Maui.

corcoran
PACIFIC PROPERTIES

www.placeholderwebsite.com

Amber M Lee
Realtor RS-77996
808.989.4468
amber.lee@corcoranpacific.com
www.corcoranpacific.com



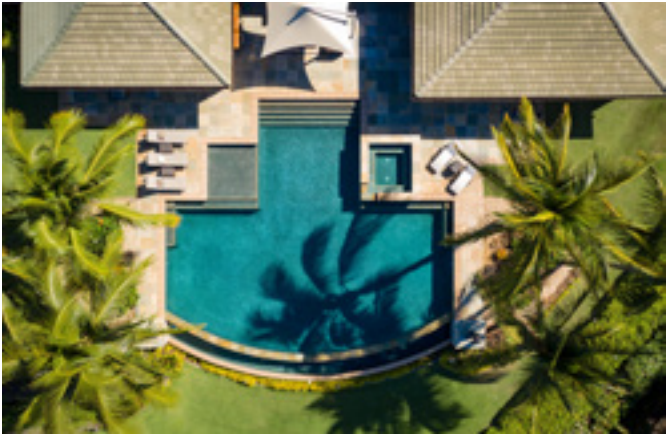


\$23,000,000

RARE KEAUHOU AT
MAKENA ESTATE

Makena, Maui | 5,882 SQFT
3.15 AC | 5BR/4.5BA
MLS# 385175 | \$23,000,000

Rare Keauhou at Makena estate offers sophisticated, contemporary flair and over three acres of manicured tropical landscaping making it both an ideal private retreat and a home for those who love to entertain. Positioned peacefully above the white sand of Palau'ea Beach this gated ocean-view property's location is unparalleled in its proximity to all which Wailea has to offer including the Championship Golf Courses, Five Star Wailea Resorts, Luxury Spas, and World-Class Dining and Shopping. See the property video at www.4557makena.com



Linda Hedden
Realtor (B), RB-22921
808.280.3054
Linda@Lindahedden.com
www.WaileaLiving.com



COLDWELL BANKER | ISLAND PROPERTIES



\$22,000,000



KAPALAOA ESTATE LOTS

Kona Kohala Coast, Big Island | 6 to 8+ AC
MLS# 640027 | \$22,000,000
MLS# 634680 | \$18,750,000
MLS# 635105 | \$15,000,000

The Kona Kohala Coast, the world's favorite family vacation playground, now includes Kapalaoa Estate Lots, located at the most beautiful white sand beach & sanctuary on the Big Island. Lots are accessed via a private drive from Queen Ka'ahumanu Highway within a mile from the Waikoloa Beach Resort. Direct access to some of the best swimming, fishing, snorkeling, diving, whale watching and ocean exploring is right at the doorstep of these 6 to 8+ acre parcels, while access to the neighboring amenities of Waikoloa Beach and the lively Resorts along the coastline is already in place.



Joni J. Metzler
(R) B
Metzler Realty
808.640.6832
Joni@MetzlerRealty.com
www.MetzlerRealty.com



\$19,500,000



DISTINCTIVE ESTATE HOME AT KOHANAIKI

Kohanaiki, Big Island | 4BR/4.5BA | MLS# 637909 | \$19,500,000

AUCTION: Bid December 28-30. Currently Listed for \$19.5M. No Reserve. Showings by Appointment. Live your perfect (no ka 'oi) life at 73-4720 Aukai Place. Perched on one of the most coveted parcels of land in exclusive Kohanaiki, an invitation-only private club community, your one-acre estate offers commanding ocean views. Rich teak hardwoods grace the interior, from the beamed ceilings to custom cabinetry to artful screens that enable gentle trade winds to flow. This turnkey escape invites you to sink into your island life from day one. Bespoke furniture, designed by Douglas Durkin of Douglas Durkin Design in San Francisco, was inspired by and crafted specifically for your villa. Lush, tropical flora surrounds you, beautifully framed by sliding glass doors that pocket away for unobstructed access to your spectacular outdoor living space. Enjoy covered lanais that span 1,500+ square feet and flow seamlessly from your great room and two serene master sanctuaries. Start your day with a refreshing swim and end it in the hot tub watching the sunset. This property offers unparalleled luxury and unimpeded views of the Kona coastline, no matter where you kick up your heels.

Call Concierge Auctions at 413.687.4933 or visit [ConciergeAuctions.com](https://www.conciergeauctions.com) for details.



Joni J. Metzler
(R) B
Metzler Realty
808.640.6832
Joni@MetzlerRealty.com
www.MetzlerRealty.com



\$19,450,000



CONTEMPORARY
ELEGANCE AT KOHANAIKI

Kohanaiki, Big Island | 5,532 SQFT
34,500 SQFT Land | 6BR/6.5BA
MLS# 641832 | \$19,450,000



Perfectly positioned on nearly an acre within a private club community called Kohanaiki; is this well-appointed custom designed residence overlooking the Pacific ocean and offers ultimate luxury living on the Big Island of Hawaii. In a prime location near a white sandy beach, coastline and Club House amenities, this beautiful estate has over 8,200 square feet under roof. This awe-inspiring flawless residence enjoys resort-style living in a breathtaking setting. With spectacular unprecedented ocean views; this residence is within walking distance to fun surfing, body boarding, snorkeling and well-known scuba diving along the coastline.



Carrie Nicholson
Realtor®, BIC
Director, Hawaii Life One
Hawaii Life – Christie's International Real Estate
Direct: 808.896.9749 | IG: @carrierealestate
Carrie@hawaiilife.com | Carrie-Nicholson.com

CHRISTIE'S
INTERNATIONAL REAL ESTATE
2019 LUXURY SPECIALIST

HL1

HAWAII LIFE
REAL ESTATE BROKERS
Hawaii Life is an Exclusive Affiliate of Christie's International Real Estate.

CHRISTIE'S
INTERNATIONAL REAL ESTATE

\$15,500,000



KA LAE KIKI – YOUR
LEGACY PROPERTY

Poipu Beach, Kauai | 3,324 SQFT
36,982 SQFT Land | 4BR/3.5BA
MLS# 630914 | \$15,500,000

4792 LAWAI RD: Located on a revered oceanfront point, Ka Lae Kiki is on the market for the first time in over 60 years. With three quarters of an acre and nearly 500 hundred feet of ocean frontage, including its magical ocean-pool, the estate is among the most expansive oceanfront properties in coveted Poipu Beach.

Architecture and interiors are current and exhibit the relaxed style that makes Hawaiian design universally desired. Windows and doors cast open wide and display unrivaled coastal and white-water perspectives. Enjoy as a vacation rental or island residence.

View the video at SiroisKauai.com.



Hannah Sirois
R(B), Partner
Elite Pacific Properties
808.639.2367
Hannah@KauaiHP.com
SiroisKauai.com



THE WALL STREET JOURNAL
HOUSE OF THE DAY





\$15,000,000

OCEANFRONT 3 HOME COMPOUND

Poipu Beach, Kauai | 7,233 SQFT Total
24,311 SQFT Land | 6BR/6.03BA
MLS# 639440 | \$15,000,000

5154 MAULILI RD: The only multi-home gated oceanfront compound in Poipu is breathtaking and consists of 3 residences, each on its own lot. The compound's unique custom-built homes are designed within the same classic Hawaiian architecture made famous by Hawaii's legendary architect, the late Charles Dickey. Whereas the islands are relaxed and open, so are the floor plans. Here, classic architecture meets a modern high style.

Residence 1: Oceanfront 2 BR/2.5BA with Study, Gym and Pool.

Residence 2: Oceanfront 2 BR/2.5BA with Study, Garage and Pool.

Residence 3: Gardenview 2 BR/2.5BA with Study, Garage and Pool.

View the video at [SiroisKauai.com](#).



Hannah Sirois
R(B), Partner
Elite Pacific Properties
808.639.2367
Hannah@KauaiHP.com
[SiroisKauai.com](#)



\$15,000,000

SPALDING HOUSE - MAKIKI HEIGHTS

Makiki, Oahu | 3.433 AC
MLS# 201933925 | \$15,000,000

Rooted in History, Spalding House is perched above Honolulu on 3.44 acres of land with vast views of Diamond Head & City Lights below. Zoned R-10 the main residence and gallery space is designated Historic Property. This extraordinary home would be an ideal gallery setting for a private art collection or could be restored to its former state as a grand private residence. This property's prime location in Makiki Heights, its established infrastructure & amazing views brings endless opportunities for the inspired buyer. Offered at \$15,000,000 | MLS# 201933927

**Renderings of Interiors for Visionary Purposes Only*



Ruthie Kaminskas
Realtor-Associate
RS-78191
Ruthie@corcoranpacific.com
808.377.0443
RuthieKHawaiiHomes.com



Myra Brandt

RB-14004
Vice President, Partner,
Corcoran Pacific Properties
REALTOR® CIPS, CRB, SRES
808.224.3413
myra.brandt@corcoranpacific.com
www.corcoranpacific.com





\$13,950,000



3630 ANINI ROAD – BEACHFRONT ESTATE

North Shore, Kauai | 3,133 SQFT | 1 AC
4BR/3.5BA | MLS# 622539 | \$13,950,000



Enjoy 180-degree ocean views from this exceptional estate property which encompass breaking surf, the azure waters of Anini Reef, the Kilauea Lighthouse, and a distant glimpse of the idyllic little island named Moku'ae'ae. Aptly named after the "quiet waters" of the Anini lagoon, Wailana Malie is a truly timeless Polynesian estate. Designed by Anderson Collier Architects and constructed by R.S. Weir (Kauai's premier builder) this property is characterized by incredible design features and custom woodworking throughout. Approximately 240 linear feet of beach frontage, ample privacy, security, a separate guesthouse, an artist studio, and one of the most beautiful island settings that one can imagine!



Ben Welborn
REALTOR(B), RB-19358
Hawaii Life
808.639.7978
Ben@HawaiiLife.com
Hi.HawaiiLife.com

I  My Hawai'i Life

2 Top Agents = 1 Solid Team. Visit [HI.HawaiiLife.com](https://hi.hawaiiLife.com) for more information, photos, and videos about these and other Kauai properties.



\$12,990,000



OCEANSIDE HOME WITH MOLOKINI VIEW

Makena, Maui | 0.57 AC | 4,668 SQFT
5BR/5.5BA | \$12,990,000

Makana Ola is a highlight of Maui architect J.Niess' 50-yr career. The refined design of this Balinese-inspired home is only surpassed by the sublime Molokini, Kaho'olawe and Lana'i views. Located in the enclave of Ahihi Bay, this updated estate is designed for privacy and wellness. Conveniently launch kayak, SUP and snorkel adventures outside your gate at the protected marine reserve. Or, stay home and enjoy the heated saltwater lap pool, spa, steam room, gym and tropical gardens to experience the joy of simple and stylish Maui living. This masterpiece is more than the sum of its parts and is a 'must visit' on Maui. www.MakanaOla.com



Josh Jerman
REALTOR(B), RB-19728
808.283.2222 | Josh@HawaiiLife.com



Peter Neu
REALTOR(S), RS-82914
800.370.3848 | PeterNeu@HawaiiLife.com



\$12,800,000



588 KULAIWI DR

Wailuku, Maui | 8,032 SQFT | 5.75 AC
5BR/5.5BA | MLS# 386171 | \$12,800,000

Gated estate set on a mountain top for ultimate privacy and security with sweeping views of the central isthmus and the north and south shorelines. This vantage point is unmatched by any other on Maui. Open spaces allow trade winds to circulate, projecting eaves keep rain out without closing windows, and the use of clerestory windows brings outside light into the home. Nishikawa Architects was influenced by the iconic work of C.W. Dickey, and this property was the winner of BIA Hawaii's 2016 Grand Award for design excellence.



Josh Jerman
REALTOR(B), RB-19728
808.283.2222 | Josh@HawaiiLife.com



Custom Interior & Exterior Functional Art
SERVING ALL HAWAIIAN ISLANDS & BEYOND



PLEASE VISIT OUR GALLERY
padilladesigns.com

808 879 0938





PARK LANE ALA MOANA

Honolulu, Oahu | 4792 SQFT | 4BR/3.5BA | MLS# 202022019 | \$12,745,000

First-time-to-market, a rarely available, Four Bedroom Park Residence at Park Lane Ala Moana, Honolulu's preeminent luxury development. This Penthouse sized home, situated along the namesake Park Lane walk-way, is for the most discerning buyer. From this home, enjoy lush, tropical landscaping outside your back windows and direct ocean views out front. The interior design and custom upgrades in this

home were done by award winning luxury design firm Philpotts Interiors and includes custom built-in Walnut cabinetry by Logan White, Master walk-in closet by Poliform, Designer light fixtures by Holly Hunt, Johnathan Browning, Bocci and Boyd, and a world class audio visual package by Blueprint Audio Visual. *Email agent for property video and 3D Matterport virtual tour.*



HAWAII LIFE
REAL ESTATE BROKERS

CHRISTIE'S
INTERNATIONAL REAL ESTATE

Noel Pietsch Shaw

MBA, S. Realtor-Associate, RS-75888

HAWAII LIFE

EXCLUSIVE AFFILIATE OF CHRISTIE'S

INTERNATIONAL REAL ESTATE

808.221.8889

noelshaw@hawaiilife.com





\$12,000,000



2 ACRE PRIVATE MAKENA ESTATE ON MAUI

Makena, Maui | 5,828 SQFT | 2 AC
4BR/4.5BA | MLS# 388508 | \$12,000,000

This private two-acre estate in Makena complements the natural elements and is connected to the land. “Makena” translates from Hawaiian as “gathering place” or “abundance.” Fruit trees and 116 solar panels help you embrace that abundance, as well as a renewable lifestyle, situated on Ahihi Bay, with swimming, snorkeling, and ocean activities at your doorstep. There are seven structures spanning across the two acres encompassing a large kitchen and dining area, a master bedroom suite, two private guest suites, a theater room, gym, office, an ‘ohana, and a three-car garage.



Josh Jerman
REALTOR(B), RB-19728
Hawai‘i Life Real Estate Brokers
Direct: 808.283.2222
Email: josh@hawaiilife.com

Matt Beall
PRINCIPAL BROKER, RB-17738
Hawai‘i Life Real Estate Brokers
Direct: 808.346.7413
Email: matt@hawaiilife.com



LuxuryHomeMagazine.com



\$10,995,000

‘HAIKU HEAVEN’ ON EARTH

Haiku, Maui | 5,573 SQFT
30.7 AC | 5BR/4.5BA
MLS# 384363 | \$10,995,000

As you drive towards the ocean on Haumana Rd, you are mesmerized by the vitality of the flowers & flora along the 1/4 mile driveway. Inside, the warmth of the wood floors, ceilings & custom Ohia posts are compelling. Stainless steel, limestone & granite surfaces compliment Maui Architectural Group’s award-winning design. A breezeway beckons you towards the master suite & gym. In another wing, guests will enjoy 2 bedrooms with en-suite baths. A cascading waterfall flows into the lagoon style pool. Call upon your guests to ponder your collective blessings as you gather in the pool pavilion adjacent to the spa, sauna & built-in BBQ. **Haumana.info**



Robert H. ‘Robbie’ Dein
Broker-Owner, ABR, CRS, RSPS | RB-18398
Maui Real Estate Advisors, LLC
Direct: 808.250.3564
Robbie@MauiRealEstateAdvisors.com



Maui’s Only Realtor Recognized as a ‘Top 100 State of Hawaii Realtor’ Among 15,000 + Hawaii Realtors (for 14 Consecutive Years), Top 100 Hawaii Realtors Hall of Fame, Hawaii Business Journal 2006–2019

Kenneth M. ‘Ken’ Hayo
Principal Broker-Owner | RB-15529
Maui Real Estate Advisors, LLC
Direct: 808.283.8435
Ken@MauiRealEstateAdvisors.com





\$10,000,000

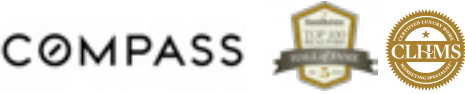


27-476 INDIAN TREE RD
Papaikou, Big Island | 1,419 AC | MLS #643935
\$10,000,000

1419+ acres situated on the slopes of Mauna Kea on the Big Island of Hawaii. Starting at approximately 600 feet above sea level, the ranch's upper reaches end in forests at about 1,500 feet. The land supports 600+ head of cattle at present and is perfect for tropical year round riding in paradise. The property is completely fenced. Abundant rainfall on the upper portions makes the property ideally suited for sustainable crops. If you're looking for a prestigious private estate, large functional cattle ranch and farmland, or multiple home sites, the possibilities abound.



Donna Duryea
R(S) 62459, CRS, GRI, ABR
808.987.4511
donna@theduryeagroup.com
DonnaDuryea.com



Evan Rock
RS-83100
Corcoran Pacific Properties
Evan@hawaiiicre.com
808-464-3847



\$8,950,000



5-7534-B KUHIO HIGHWAY, NORTH SHORE KAUAI BEACHFRONT

Hanalei, Kauai | 2,328 SQFT | 27,205 SQFT Land | 3BR/2BA | MLS# 640219 | \$8,950,000

Designed for luxe island living, this contemporary estate features fine craftsmanship, quality finishes, and unparalleled attention to detail. The great room, has floor-to-ceiling windows and doors, inviting in abundant natural light and stunning ocean views. The designer kitchen has teak cabinetry, stainless steel appliances and a large center island. An infinity-edged Davinci spa is ideally situated to capture spectacular sunrises and sunsets over the ocean. This extensively updated, custom home is situated on a beachfront parcel of over 1/2-acre in size. Expansive views of the coastline and breaking surf fill the central great room.



Ben Welborn & Tiffany Spencer
RB-19358 & RS-62202
Hawaii Life
Ben: 808.639.7978
Tiffany: 808.652.5264
Ben@HawaiiLife.com
Tiffany@HawaiiLife.com
Hi.HawaiiLife.com

I  My Hawai'i Life

2 Top Agents = 1 Solid Team. Visit [HI.HawaiiLife.com](https://hi.hawaiiLife.com) for more information, photos, and videos about these and other Kauai properties.



\$8,900,000



3292 KALIHIWAI ROAD,
NORTH SHORE KAUA'I
OCEAN BLUFF

Anini Vista, Kauai | 5,378 SQFT | 2.97 AC
5BR/5.5BA | MLS# 642299 | \$8,900,000



Perfectly situated atop one of Kauai's most epic promontories, rests the latest inspiration by acclaimed designer, Cesar Alonso. Three perfectly-appointed master bedroom suites, plus 2 additional en suite bedrooms, are all thoughtfully designed for privacy and functionality, making this a great family compound or a wonderful vacation retreat. The central great room, which is anchored by a chef's dream kitchen, is surrounded by spacious covered decks, creating a seamless indoor/outdoor living space which evokes life-changing moments including stunning sunrises, epic cloud shows, crashing surf, vibrant rainbows, views of the historic Kilauea Light House and much more...



Ben Welborn & Tiffany Spencer
RB-19358 & RS-62202
Hawaii Life
Ben: 808.639.7978
Tiffany: 808.652.5264
Ben@HawaiiLife.com
Tiffany@HawaiiLife.com
Hi.HawaiiLife.com

I  My Hawai'i Life

2 Top Agents = 1 Solid Team. Visit [HI.HawaiiLife.com](https://hi.hawaiilife.com) for more information, photos, and videos about these and other Kauai properties.



\$8,800,000



LIFE ON LANAI
AT HULOPOE BAY

Hulopoe Bay, Lanai | 4,951 SQFT
1.2 AC | 4BR/4.5BA | MLS# 387833
\$8,800,000

This alluring Estate is perched above Hulopoe Bay and Sweetheart Rock, Puu Pehe. A safe, sustainable sanctuary that feels a world away but is still in the US on the Covid-19 free island of Lanai. With commanding views of Hulopoe Bay, this serene gated estate features a carbon neutral home, mature landscaping and automated pool system. The private residence welcomes you with dramatic views of Maui and Kahoolawe from a living room with disappearing glass walls for the best of indoor-outdoor living. A master suite with private deck, walk-in closet with laundry, and large bath are the epitome of the tropical luxury. Dining and Resort amenities are available at the nearby Four Seasons Resort Lanai. A 40' fishing boat with slip at the Manele Harbor can also be included.



Mary Anne Fitch
R(B)-15747
Hawaii Life Real Estate Brokers
Direct: 808.250.1583
Email: sold@maui.net
Web: soldmaui.com



Nam L. Le Viet
R(S)-61810
Hawaii Life Real Estate Brokers
Direct: 808.283.9007
Email: nam@mauisold.com
Web: mauisold.com



\$8,500,000



A QUINTESSENTIAL BEACHFRONT HOME

Olowalu, Maui | 2,562 SQFT | .54 AC
3BR/4.5BA | MLS# 388443 | \$8,500,000

The compelling presence of the indigo blue Pacific, punctuated by the cerulean horizon, is wonderfully distracting as you pass through the hand-carved teak 'Menchune' columns & pivotal front doors. Velvety plaster walls rise from the etched acid-washed marble floors along open-air corridors with hand-carved limestone Banana Tree wall reliefs, Kahili Tiki torches, waterways & gardens. Enhancing the Great Room, an intricately carved teak 'Javanese Joglo' is a spirit-lifting, museum-like wonder. Delight in the artistry throughout. Enjoy resort-quality living, Caribbean-like coral gardens, & calm clear reef-protected waters. Olowalu.info



Robert H. 'Robbie' Dein
Broker-Owner, ABR, CRS, RSPS | RB-18398
Maui Real Estate Advisors, LLC
Direct: 808.250.3564
Robbie@MauiRealEstateAdvisors.com



Maui's Only Realtor Recognized as a 'Top 100 State of Hawaii Realtor' Among 15,000 + Hawaii Realtors (for 14 Consecutive Years),
Top 100 Hawaii Realtors Hall of Fame, Hawaii Business Journal 2006-2019

Kenneth M. 'Ken' Hayo
Principal Broker-Owner | RB-15529
Maui Real Estate Advisors, LLC
Direct: 808.283.8435
Ken@MauiRealEstateAdvisors.com



\$8,500,000



OCEANFRONT LUXURY

Kihei, Maui | 2,709 SQFT | 3BR/3.5BA
MLS#389259 | \$8,500,000

Experience this private, gated, turnkey, stunning residence in a prime oceanfront location. 3-bd, 3-ba, completely renovated, fully furnished. The great room has retractable sliding glass doors that blend indoors and outdoors seamlessly. Custom furnishings, built-in media center and koa wood throughout. Luxurious bedroom/bathroom suites have custom-designed headboards, marble showers, quartz basins, including a bronze bamboo panel in the powder room. Complete "Control4 Smart Home" operating system. Enjoy the expansive outdoor dining area with a large koa slab table, mosaic-tiled swimming pool, spa and waterfall shower.



Riette G. Jenkins
Managing Director of Global Luxury
Realtor-Broker, RB-17543
808.870.4073
riette@waileahawaii.com
waileahawaii.com



COLDWELL BANKER
ISLAND PROPERTIES



\$8,500,000



QUALITY BUILT CUSTOM ESTATE

Hualalai Resort | 5,529 SQFT | 41,096 SQFT Land
5BR/4.5BA | MLS# 643778 | \$8,500,000

Elevated for maximum privacy with boundless ocean horizon views, this custom owner-built estate is a tranquil, luxurious retreat in tune with its natural surroundings. Enveloped with gorgeous landscaping, the best of Hawaii's indoor-outdoor living is central to construction and no detail inside this idyllic island residence has been overlooked. Specially carved African Teak wood fascia trim borders the outside of the home, while inside unique granite countertops decorate each room, alongside hammered copper details, travertine and chiseled walnut hardwood flooring, with 9' doorways and a 10' minimum ceiling height.



Tom Loratta
R(B) 14885
Compass
808.895.5548
Tom@TomLoratta.com
www.PinkertLoratta.com

PINKERT & LORATTA
HAWAII LUXURY PROPERTIES

COMPASS



\$8,400,000



ASTOUNDING OCEAN VIEWS

Hualalai Resort | 4,734 SQFT | 29,747 SQFT Land
4BR/4.5BA | MLS# 643759 | \$8,400,000

Perfectly located within Hualalai Resort on the private Ke'olu Golf Course bestowing unmatched Pacific Ocean views. Contemporary design integrated with outdoor features combine to imbue this exquisite resort residence with a Zen-like calm. The open concept and wall-length pocketing doors artfully connect the living area, kitchen and outdoor living spaces while capturing the horizon views. Sized for a family and ready for hosting, the expansive chef's kitchen is fully equipped with premium appliances, ample granite counter space and a pocketing kitchen window that enables pass-through views of the ocean. The detached one-bedroom guest house features the same attention to detail as the main property, making it perfectly self-contained.



Tony L. Pinkert
R(S) 65539
Compass
808.989.4900
Tony@TonyPinkert.com
www.PinkertLoratta.com

PINKERT & LORATTA
HAWAII LUXURY PROPERTIES

COMPASS



\$8,250,000



218 PLANTATION CLUB DR

Kapalua, Maui | 7,267 SQFT | 2.19 AC
5BR/5.5BA | MLS# 388247 | \$8,250,000

Experience the majestic year-round sunset, ocean and island views of this magnificent home. This incredible residence sits on 2.2 acres of prime real estate perched above the 18th fairway over the renowned Plantation Golf Course at Kapalua. These gorgeous views can be enjoyed from every room and overlooks five fairways to the ocean. Offering over 7200 square-foot of the luxurious living space with five bedrooms and five and half bathrooms, it also features a glass fronted wine cellar, gourmet kitchen, exquisite dining room, and media room with sound system, including bar.
www.MauiHomeSales.com/218Plantation



Robert R. Myers
REALTOR (S), SRS
Tel: 808.283.3067
Robert@MauiHomeSales.com
www.MauiHomeSales.com



For all the Maui listings check out my website:
www.MauiHomeSales.com
Including Interactive Maps of Kaanapali, Kapalua and Wailea



\$7,985,000

LUXURY FOUND AT KUKUI'ULA

Kukui'ula, Kauai | 4,130 SQFT
23,281 SQFT Land | 5BR/5.5BA
MLS# 638661 | \$7,985,000

2975 KAHALAWAI ST: The distinct Kukui'ula Mauka Neighborhood, known for its incomparable bird's eye ocean, coastal and sunset perspectives, is the setting for one of Kauai's most refined Hawaiian residences. This home brings a design continuum without compromise, where finish qualities deliver the completeness and authenticity that great architecture delivers.

Upon entering this 5 bedroom and 5.5 bath residence framed views over the pool and spa appear showcasing Kauai's dazzling ocean and astounding landscape. Life here at Kukui'ula provides a private club lifestyle like no other complete with world class amenities.

View the video at SiroisKauai.com.



Hannah Sirois
R(B), Partner
Elite Pacific Properties
808.639.2367
Hannah@KauaiHP.com
SiroisKauai.com



THE WALL STREET JOURNAL
HOUSE OF THE DAY





\$7,920,000



1388 ALA MOANA BLVD
SKY RESIDENCE #7704

3,071 SQFT | 3BR/3.5BA | \$7,920,000
MLS# 201911518 | Honolulu



Rarely available: a PREMIER Sky Residence with 3 parking spaces at Park Lane Ala Moana, Honolulu's preeminent luxury residential property. With direct ocean and mountain views and fronting Ala Moana Beach Park, upgraded Park Lane #7704 offers a single-family home experience in the sky. The "U-shape" design envelops a covered lanai, making the outdoor space an extension of the home. This visionary project was developed by the MacNaughton Group & Kobayashi Group on the ocean side of Ala Moana Shopping Center. Park Lane has sought-after indoor-outdoor living combined with the services, amenities, security and ease of a luxury condominium development.



Noel Pietsch Shaw
MBA, S. Realtor-Associate, RS-75888
Heyer & Associates, LLC
808.221.8889
noelpshaw@gmail.com

HEYER
& ASSOCIATES LLC

Emi A Rhodes
RA, RS-75283
Heyer & Associates, LLC
808.457.8993
emirhds@gmail.com



\$7,865,000



TREASURED HOME
BY THE SEA

Kamuela, Big Island | 4,737 SQFT | 4BR/5.5BA
MLS# 636408 | \$7,865,000



The ocean is calling... Wake up to the world you've always wanted at Hale Makamae O Kai "Treasured Home by the Sea" at the incomparable Pauoa Beach, an exclusive oceanfront enclave within the iconic Mauna Lani Resort. This exquisite Maryl-built home is located about 800' from the beach at the sparkling blue Pauoa Bay. If you are looking for a luxury home in an oceanfront community with access to Hawaii's best amenities, look no further than the well-kept secret that is Pauoa Beach.



Karen Ferrara, MBA
REALTOR, RS-72752
karen.ferrara@corcoranpacific.com
808.883.0094
karen-ferrara.com

corcoran
PACIFIC PROPERTIES
MAUNA LANI
PORTFOLIO

Deborah Thompson
R(S), RS-81063
deborah.thompson@corcoranpacific.com
808.938.6631
www.DebThompsonHawaii.com





525 HANA HWY

Paia, Maui | 3,600 SQFT | 15,028 SQFT Land | 6BR/4BA | MLS# 388588 | \$7,850,000

Incredible North shore oceanfront retreat. Four Structures on a 15,000sflot, three homes, and a three-car garage with laundry and an office. Perched off Hana Hwy between Paia and Kuau, just in front of Tavares Bay’s wave, the perfect “right, sits a charming oceanfront and poolside haven.

Three homes, separately, privately, and masterfully appointed all with their own beautiful ocean views. Once inside a Mediterranean charm unfolds of natural architecture, high roof lines, coral accents walls, yellow Venetian plaster textured walls, and the striking royal blue pool.



COLDWELL BANKER

ISLAND PROPERTIES



Rhonda Smith Sanchez

RB-22953

Maui’s North Shore Specialist

808.205.2175

Rhonda@RhondaMaui.com

Rhondamaui.com





3704 ANINI BEACHFRONT – LICENSED VACATION RENTAL

Anini Beach, Kauai | 2,778 SQFT | 21,214 SQFT Land | 3BR/2.5BA | MLS# 634942 | \$7,590,000

Sophisticated contemporary oceanfront home just steps from the sand on Kauai's North Shore. An elegant, open floor plan with 9 ft.-tall glass pocket doors create a seamless transition between interior & exterior living areas and offer expansive white-water views and refreshing breezes. An open concept design, ample natural lighting, ocean-views and private lanais from each bedroom, high ceilings, a gourmet kitchen, and a half acre of lush, tropical landscaping combine to create

the ultimate island hideaway. From the moment you pull into the driveway and park under the swaying palms, the house welcomes you into another world — one that slows down and savors the beauty of nature. The property is an entertainer's dream and can easily accommodate large & lively parties or romantic, intimate gatherings. Licensed Vacation Rental with strong income figures.



I  My Hawai'i Life

2 Top Agents = 1 Solid Team. Visit Hi.HawaiiLife.com for more information, photos, and videos about these and other Kauai properties.

Ben Welborn & Tiffany Spencer

RB-19358 & RS-62202

Hawaii Life

Ben: 808.639.7978

Tiffany: 808.652.5264

Ben@HawaiiLife.com

Tiffany@HawaiiLife.com

Hi.HawaiiLife.com



\$7,500,000



BIG BEACH ESTATES

Makena, Maui | 2.79 AC | \$7,500,000

Located on one of the most exclusive and beautiful coastlines in the world, South Maui’s Big Beach Estates offer amazing views and that remote island experience with all of the conveniences of being in town just minutes away. Purchase this property as a 2.79 acre private estate or for its development potential. This is one of the last available parcels in Makena and offers a multitude of development options. The four lots are also available separately at this time, subject to final subdivision approval: Lot 1 \$2.2M, Lot 2 \$2.6M, Lot 3 \$2.8M, and Lot 4 \$3.2M.

www.bigbeachestatesmaui.com



Josh Jerman
REALTOR(B), RB-19728
808.283.2222 | Josh@HawaiiLife.com
www.josh.hawaiiilife.com



David W. Richardson
REALTOR(B), RB-10780
808.870.9916 | Dave@HawaiiLife.com
www.MauiOceanfront.com
HL-1 Director | “Top 2 agent on Maui 2018”

\$7,195,000



72-3040 MANINIOWALI DRIVE

Kailua-Kona, Big Island | 7,669 SQFT
31,058 SQFT Land | 5BR/6.5BA | MLS# 634638
\$7,195,000

REDUCED! Perfect SAFE HAVEN! Absolutely fabulous, refurbished, fully furnished, custom 5-bedroom residence with 7,669 sq ft air-conditioned living space, unobstructed 180-degree ocean, fairway and sunset views, overlooking the Kukio’s par 3 executive course. Built with the finest materials, appointments, and design, the home is perfect for large family gatherings and entertaining. On the upper level is the great room, opening to the deep lanai overlooking the pool, spa, and BBQ area to the ocean and Maui beyond. The master bedroom suite with an outdoor shower garden and jacuzzi tub, home office, sitting room and 3 of the 4 guest bedroom suites, each with garden showers, have dramatic ocean views.



Yvonne Khouri-Morgan
Realtor Broker
Luxury Kohala Coast Resorts
808-937-4466
Yvonne@alohalife.net
www.HawaiiResortLuxuryHomes.com
www.MaunaLaniRealty.com



\$6,950,000



PARK LANE OCEAN RESIDENCE #7401

Honolulu, Oahu | 2,594 SQFT | 3BR/3.5BA
MLS# 202007494 | \$6,950,000

A premier turnkey home in Park Lane, Honolulu's preeminent luxury residential property. Flooded with natural light while still maintaining the utmost privacy, Park Lane #7401 offers panoramic views of the Pacific Ocean and Ala Moana Beach Park. This 3-Bedroom, 3.5 Bathroom Ocean Residence home is being sold fully furnished and has been upgraded with furniture and design by Philpotts Interiors, Blue Print Audio Visual and curated fine art by Kelly Sueda. This home has a large lanai, which functions as an outdoor living room.



Noel Pietsch Shaw
MBA, S. Realtor-Associate, RS-75888
HAWAII LIFE
EXCLUSIVE AFFILIATE OF CHRISTIE'S
INTERNATIONAL REAL ESTATE
808.221.8889
noelshaw@hawaiilife.com



\$6,850,000



LOT 35 AT KOHANAIKI

Kona Kohala Coast, Big Island | 1.28 AC
MLS# 637665 | \$6,850,000

Kohanaiki is situated on roughly 450 acres of land with over a mile and half of beach fronting one of Hawaii's most productive sport fishing grounds, affectionately known as "ono lane," and the Big Island's finest surfing beach. The residential community & Kohanaiki Club are built around luxury, sustainability and world-class amenities. The Kohanaiki Club is a private equity club and membership is by invitation only to Kohanaiki Property Owners.
*LOT PHOTOS HAVE BEEN SUPERIMPOSED WITH SWIMMING POOLS.



Joni J. Metzler
(R) B
Metzler Realty
808.640.6832
Joni@MetzlerRealty.com
www.MetzlerRealty.com





\$6,495,000



476 LAULEA
Spreckelsville, Maui | 2,058 SQFT | 1.25 AC
6BR/3BA | MLS# 389153 | \$6,495,000

476 Laulea Place is a beach lifestyle legacy location that offers, oceanfront rejuvenation, barefoot sandy beaches with beautiful ocean breezes. The two structures have been mindfully designed to sit smartly with the tradewinds at your back while welcoming endless ocean views. Each private living quarters is outlined with wrap-around lanais, making space and comfort for watching all the watersports and plenty of room for quiet coffee breaks. The main house has amazing ocean views, four bedrooms, and two baths, the cottage has tremendous ocean views and is a two-bedroom one-bath beach cottage. Use this most enjoyable property as a residence or continue to use it as a Bed and Breakfast.



Rhonda Smith Sanchez
RB-22953
Maui's North Shore Specialist
808.205.2175
Rhonda@RhondaMaui.com
Rhondamaui.com

   **COLDWELL BANKER** | **ISLAND PROPERTIES**



\$6,495,000

THE FAMOUS SANDY BEACH HOUSE
Poipu Beach, Kauai | 2,341 SQFT
12,381 SQFT Land | MLS# 624586
\$6,495,000

4432 LAWAI RD: The Sandy Beach House is optimal for anyone desiring Paradise, Pool and Privacy - One of the most sought-after homes on Kauai's sunny southshore, The Sandy Beach House is special and footsteps away from Kauai's esteemed National Tropical Botanical Garden.

The 3 bed, 2.5 bath legal vacation rental offers boundless views of the Poipu coastline, beach, backyard pool and spa. Bright and cheery interiors are finished in whites and blues and are emblematic of this home's beach location. Sliding doors open the interior to the exterior with ease and create an extension of your seaside lifestyle on to the lanai.

View the video at [SiroisKauai.com](https://www.SiroisKauai.com).



Hannah Sirois
R(B), Partner
Elite Pacific Properties
808.639.2367
Hannah@KauaiHP.com
SiroisKauai.com





\$6,200,000

MAUNA LANI
RESORT NEW
CONSTRUCTION

Kohala Coast, Hawaii | 4,725 SQFT
4BR/4.5BA | MLS# 642314
\$6,200,000

Amazing opportunity to purchase a brand new home, under construction, on the 4th fairway of Mauna Lani South course at Ke Kailani. Beautifully appointed 5 bedroom and 5½ baths with 4,396 sqft of living area and 2,321 sqft of covered lanai. Indoor and outdoor living at its finest! Designed to maximize the dramatic ocean, mountain and sunset views. Tropical modern design with soaring ceiling lined in Sapele, interior waterfall entry and top of the line gourmet kitchen. Infinity spa and pool with large baja deck , firepit, sunken BBQ and wet bar area with counter seating all positioned to capture the views.

* Professional Architectural Renditions presented on some photos.



Ahmad Mohammadi
Principal Broker RB-21131
Hawaii Luxury Real Estate
ahmadtmo@gmail.com
808-640-1994



Genevieve Firestone
Realtor Salesperson, RS-70043
Hawaii Luxury Real Estate
genevievefirestone@gmail.com
808.896.4842



\$5,500,000



DIAMOND HEAD VILLA

Diamond Head | 3,433 SQFT | 4BR/4BA
MLS# 202020970 | \$5,500,000

Timeless details reflect the principles of classic architecture: strength, utility, and beauty. Situated in an exclusive neighborhood, the two-story villa is located on the east facing slope of Diamond Head with a picture-perfect 158' elevation from the turquoise waters below. The spacious 4bd/4ba floor-plan boasts high ceilings, new designer kitchen, formal dining room, generous living areas, and trademark indoor/outdoor spaces for the entire family. Other features include a wet bar/family room area that connects to the courtyard/BBQ and swimming pool. Freshly remodeled with custom cabinetry and new wood flooring. Find a rare mix of a tranquil, private setting on a desirable cul-de-sac.



Vicki Hossellman
RA|RS-38718
Luxury Property Specialist
808.351.3833
Vickih@cbpacific.com
www.Vickihossellman.com



COLDWELL BANKER
ISLAND PROPERTIES



\$4,700,000

SERENITY ON KAUAI

Kalaheo, Kauai | 5,163 SQFT
3 AC | 6BR/6.5BA | MLS# 625644
\$4,700,000

3527 PAPALINA RD: This stunning estate on Kauai's southern shore offers features and benefits of the highest order. Embark upon your own tree tunnel driveway leading to a custom security gate, which opens to unveil the exceptional 3 acre ocean view property.

Gaze over lush expansive landscape and observe the fine 5 BR/5.5BA residence, 1 BR/1BA guest house, pool and the artistry of this estate's tropical splendor. Instantly, you sense the privacy and special nature of the tranquil oceanview address while also noting an endless array of luxury features. For those seeking privacy, quiet and perfection on Kauai, this is your retreat.

View the video at [SiroisKauai.com](#).

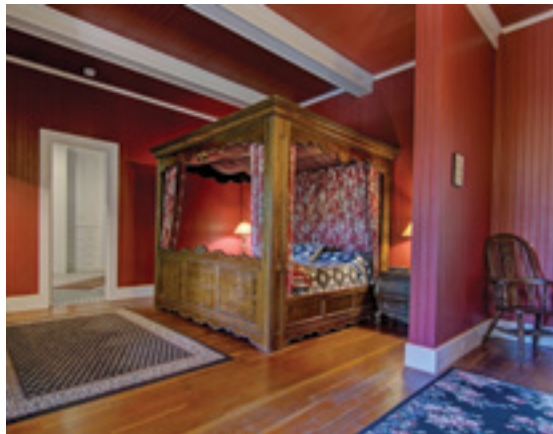


Hannah Sirois

R(B), Partner
Elite Pacific Properties
808.639.2367
Hannah@KauaiHP.com
SiroisKauai.com



\$4,700,000



WAIMEA'S ICONIC ROCKEFELLER ESTATE

Waimea, Big Island | 11,093 SQFT | 11.3 AC
10BR/10BA | MLS #644134 | \$4,700,000

A *SAFE HAVEN IN WAIMEA*. This iconic upcountry landmark residence in Waimea has long been an important part of the Island's history. Three lots of 11.3 acres, this property was acquired in the mid 60's by Laurance Rockefeller for his private residence while he developed the famed Mauna Kea Beach Hotel. The main house has 10 bedrooms/baths, 2 commercial kitchens, a billiard room (if walls could talk!), a large Koa wood cocktail lounge, a 14 seat dining room and the very rare V-125 resort zoning in addition to the farming and ranching component. Nearby 1,612 sq ft. guest house has 3 bedrooms/baths. Lease is through June 2059; annual rent is approximately \$3,200.



Rebecca Keliioomalu

President and Founder of The Rebecca K. Collection
Vice President, Corcoran Pacific Properties Platinum Circle
Certified Luxury Home Marketing Specialist
Hawaii Business Top 100 Hall of Fame
808.895.1156
rebeccak@corcoranpacific.com
www.Corcoranpacific.com





LEE, AMBER
SEE PAGE 36

\$4,395,000



223 PLANTATION CLUB DR

Lahaina, Maui | 5,366 SQFT | 2.2 AC
3BR/3.5BA | MLS# 389036 | \$4,395,000

This comfortable, single-story 3 Bed/3.5 Bath luxurious residence features Grand Rooms, an Open Plan kitchen, a large private Master Suite with indulgent Bathroom and Walk-in Closets, a private well-appointed office, Wine room, Bar, Pantry, high ceilings, Lutron Lighting system, approximately 60 feet free form Pool, Koi Pond, Private entry with Porte-Cochere and 3 Car Garage. With 9,348 sq. ft under roof, this is an especially livable family home great for entertaining inside or out while providing several private areas to relax.
www.mauihomesales.com/223PlantationClubDr



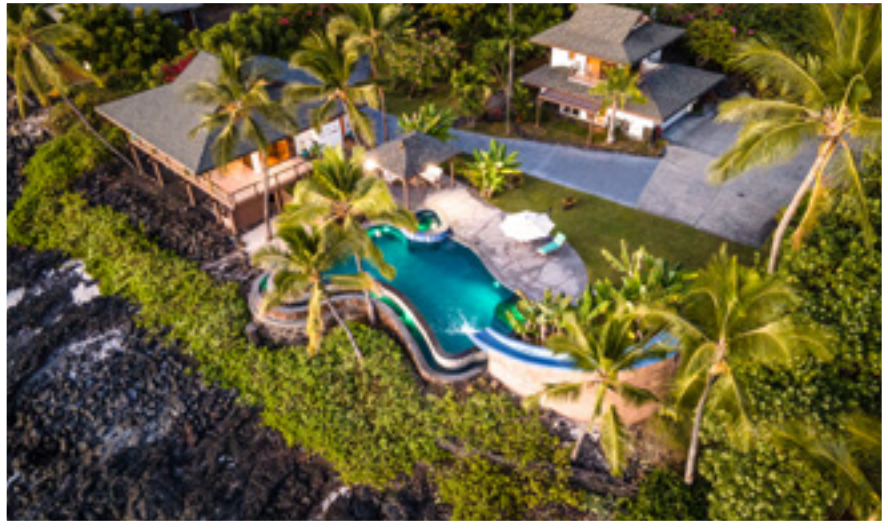
Robert R. Myers
REALTOR (S), SRS
Tel: 808.283.3067
Robert@MauiHomeSales.com
www.MauiHomeSales.com



For all the Maui listings check out my website:
www.MauiHomeSales.com
Including Interactive Maps of Kaanapali, Kapalua and Wailea



**COLDWELL
BANKER**
ISLAND
PROPERTIES



TWO CONTIGUOUS OCEANFRONT PARCELS

Kailua-Kona, Big Island | 2,326 SQFT | 27,007 SQFT Land | 3BR/3BA | MLS# 643656 | \$4,395,000

An opportunity in Kailua Kona like no other. Two contiguous oceanfront parcels sold together creating the perfect legacy offering. This location is unparalleled. Set off the world famous Alii Drive, with natural rock formations that buffer, you enter either of your two parcels via private gate. Once closed the sounds of the ocean instantly lull you into an immediate sense of relaxation. You are home.

The main oceanfront home (north lot), a 1bed/2bath with expansive west facing lanai has been updated throughout and sets you directly on the ocean.

On your larger parcel (south lot) the lower level has been built out to accommodate two bedrooms, and an upstairs studio with wrap lanai. This lot offers you the opportunity to build a new home to your design or simply continue to enjoy your property in its current usage.

Together, both lots total over 27,000 sq feet of prime Kona oceanfront. This is a one of a kind offering that cannot be replicated.



M | MARCO A. SILVA
REALTOR®



Marco A. Silva
REALTOR®, Broker, RB-20599
808.557.8921 | Marco@KonaLuxuryRealEstate.com |
KonaLuxuryRealEstate.com
Certified Luxury Home Marketing Specialist®
Certified Residential Specialist | Certified Negotiation Expert
2019 Top PERFORMER® Hawaii Business Magazine
2017 Top 100 REALTOR® Hawaii Business Magazine
2016 Top 100 REALTOR® Hawaii Business Magazine





\$4,300,000



HAIKU SANCTUARY

Haiku, Maui | 2,772 SQFT | 9.64 AC
3BR/3BA | 2 Homes | 2 Pools
MLS# 385296 | \$4,300,000

The Haiku Sanctuary is a 9.64 acre, off-the-grid estate located on Maui's North Shore. It includes two artist inspired homes, two pools, an art studio, nature trails, fruit groves, secret spots and more. The grounds include a variety of fruit trees, tropical botanicals, swaying palm trees, sprawling banyan trees, bananas, mango trees and walking paths. Most of the property lends itself to exploration, meditation or just quiet contemplation. The houses are independent from the grid. A well provides water and multiple photovoltaic systems augmented by a backup generator provide the power.



Billy Jalbert
PRINCIPAL BROKER, RB-19015
Maui Real Estate
Direct: 808.283.6377
Email: billy@mauirealestate.com

Matt Beall
PRINCIPAL BROKER, RB-17738
Hawai'i Life Real Estate Brokers
Direct: 808.346.7413
Email: matt@hawaiilife.com



LuxuryHomeMagazine.com

5



\$3,995,000



49 BLACK SANDS BEACH

Mauna Lani Resort, Big Island | 4,218 SQFT
4BR | MLS# 640094 | \$3,995,000

Centrally located in the luxurious Mauna Lani Resort. The gated community of 49 Black Sands beach is just a few steps from the Black Sand Beach clubhouse with its spa, pool, kayak storage, gathering pavilion, fitness room, tennis court and the black sand beach. Enough room for the whole family to snuggle yet have alone space. 4 Bedrooms, 3,800 Sq.Ft. Great set up for multi-generational family living. Separate in-law or guest suite. Mountain, golf course and ocean views. Be sure to tour this home in 3D Link: <http://bit.ly/49BSB20a>



Eileen Lacerte
REALTOR® Broker/Owner
808.989.1862
eileen@betterislandlifestyle.com



LuxuryHomeMagazine.com

2

DISTINCTIVE
COLLECTION
by
**Better
Homes**
and Gardens
REAL ESTATE
ISLAND LIFESTYLE

65

64

\$3,980,000



HOOLEI A3
Wailea-Makena, Maui | 2,619 SQFT
3BR/3.5BA | MLS# 387982 | \$3,980,000

A Rare & Special Opportunity to Own the Very Best – a top row Bldg A - Plumeria plan seldom becomes available. Being up front and center in your own corner of the world just doesn't get any better! The unparalleled views & privacy are simply spectacular with panoramic views of Molokini, Kaho'olawe, Lanai & West Maui Mountains. This spacious townhouse style condo lives like a residence. Furnishings and appointments designed by Bassman Blain Home give this villa an inviting atmosphere. All 3 bedrooms feature an en suite bath providing privacy within this luxurious villa.
www.hoolei-maui.com



Diane K. Pool
R(B)-17896, ABR, CRS
808.276.2004
diane@SoldOnMaui.net
www.SoldOnMaui.net



\$3,950,000



ROYAL PLACE RESIDENCE
Diamond Head, Oahu
3434 SQFT | 7731 SQFT Land
4BR/3.5BA | MLS# 202018439 | \$3,950,000

An impeccably remodeled Modern Cottage on coveted Royal Place. This move-in ready home is walking distance to the beach and with soaring ceilings, is flooded with natural light. This executive style home, features 4 spacious bedrooms, each with walk-in closets, spa-style bathrooms with natural stone finishes and a picture perfect cottage-style chef's kitchen with walk-in pantry. Lush tropical landscaping surrounds the private pool with wrap around pool deck, outdoor shower, gas BBQ-grill and lounge area. This Newport Beach style modern home is a must see!
Email agent for property video and 3D Matterport virtual tour.



Noel Pietsch Shaw
MBA, S. Realtor-Associate, RS-75888
HAWAII LIFE
EXCLUSIVE AFFILIATE OF CHRISTIE'S
INTERNATIONAL REAL ESTATE
808.221.8889
noelshaw@hawaiilife.com





\$3,900,000

YOUR BEACH HOUSE AT KUKUI‘ULA

Kukui‘ula, Kauai | 2,600 SQFT
10,104 SQFT Land | 3BR/3BA
MLS# 639704 | \$3,900,000

4980 MAHUA ST: This ocean view residence and guest cottage are set within Kukui‘ula’s Kaula neighborhood, a short walk from the Club at Kukui‘ula, Shops at Kukui‘ula and the beach. Curb appeal here is instantaneous. Covered lanai spaces set a welcoming tone and display ever-present ocean and garden views.

Framed by a tropical landscape palette, the property conveys a warm and gracious feeling. Inside, well-appointed rooms are styled in a classic beach house flare. Make this your Kaua‘i base camp and enjoy the world-class amenities membership to the Club at Kukui‘ula afford.

View the video at [SiroisKauai.com](#).



\$3,700,000



46900 HANA HWY

Hana, Maui | 3,196 SQFT | 5.4 AC | 3BR/3.5BA
MLS# 388938 | \$3,700,000

This private and tranquil estate consists of 2 adjacent oceanfront parcels totaling 5.4 AC and a residence on Hana’s treasured Gold Coast. The Plantation-style home with large, ocean-facing decks and a detached 2 car garage offers total privacy with no other dwellings visible from the home. The home is sited on a bluff with sweeping views down the coast and across the Alenuihaha Channel to the snowcapped mountains of the Big Island. Coastal pastures gently slope to shoreline trails and tide pools. An adjoining 11.5 AC oceanfront vacant parcel can be included to create a 17 AC Hana estate spanning over one-third mile of pristine shoreline. Enjoy the tropical trade winds, lush green pastures, and the complete privacy this special Hana estate has to offer.



Hannah Sirois
R(B), Partner
Elite Pacific Properties
808.639.2367
Hannah@KauaiHP.com
SiroisKauai.com



Josh Jerman
REALTOR(B), RB-19728
808.283.2222 | Josh@HawaiiLife.com



Tim Stice
REALTOR (B) - RB-21556
808.268.8511 | timstice@hawaiilife.com





\$3,495,000



KAUAI – MOLOA’A BAY

Anahola, Kaua’i | 2,597 SQFT | 30,754 SQFT Land
3BR/2BA | MLS# 640264 | \$3,495,000

A rare opportunity on Kauai’s North Shore to acquire a classic Plantation-style residence & guesthouse along with a Moloa’a Bay beachfront lot. Hale Maliu is a substantial house & guesthouse set on a blufftop half-acre. The 3 bed & 2 bath planation-style amenity rich home features an expansive living area with walls of windows that disappear bringing the out-in, a lavish chef’s kitchen and several generous lanais. The guesthouse also features big sky ocean views. The 7,667 SF beachfront parcel provides a generous, sheltered gathering place to enjoy ocean access. All in all, a great get.



Ahearn Karlovsky

Sean Ahearn, R, BIC
Jim Karlovsky, RB
Compass
800.808.6373
aloha@akkauai.com
www.AhearnKarlovsky.com

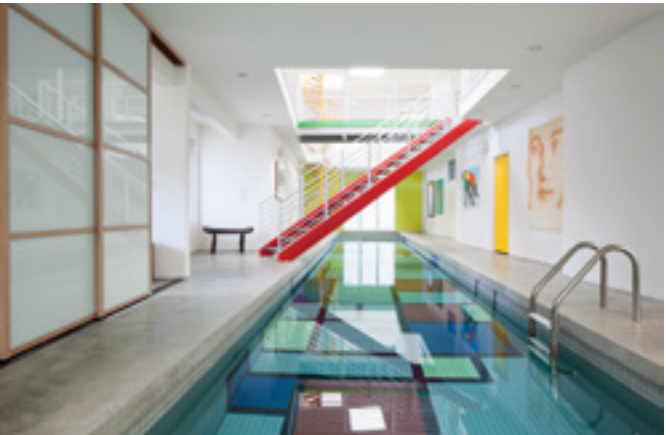


\$3,480,000

2184 ROUND TOP DRIVE

Honolulu, Oahu | 6,274 SQFT
13,270 SQFT Land | 4BR/5.5BA
\$3,480,000

A Modern showpiece by Vincent Tai, AIA, Architect Featured in the February 2013 issue of HI Luxury Magazine, this inspired Makiki Heights sustainable contemporary 2-story home of 6,274 sf on 13,270 sf lot with a 20-m indoor pool is located in a quiet neighborhood on lower Round Top Drive. This HIDEAWAY, not visible from the street, is accessible by a private driveway. It is backed against the lush tropical setting at the base of Tantalus and Honolulu Watershed. A unique blend of “town and country” living with views of the ocean and the city skylines.



Vincent T.C. Tai, AIA, Architect

RB-18219
2184RoundTopDrive@gmail.com
808.358.2321
www.2184roundtopdrive.com



\$3,477,777



HIDDEN KAILUA TREASURE

Kailua, Oahu | 5,699 SQFT | 5BR/4.5BA
MLS# 202021867 | \$3,477,777



Mini mansion one house away from the beach with nearly 5,700 sq. ft. of luxury living and sky-high ceilings. This 5 bedroom, 4.5 bath beautiful home is a newly-renovated haven at Beachside—Kailua. Built with solid concrete from floor to ceiling, it showcases gleaming tiled floors, cathedral wood ceilings, quartz counters, stainless steel appliances, Viking gas stove, a Sub Zero refrigerator, high-end dishwasher, wall-to-wall upscale windows, 4-car and 2-car garages and a spacious driveway that can fit 10+ cars. Listing Agent Sandra Sagisi Moser is named as one of Hawaii’s Top Industry Leaders in Hawaii Real Estate. <https://www.hawaiiibusiness.com/top-industry-leaders-in-real-estate-2020/2/>



Sandra Sagisi Moser
Sandra Sagisi Hawaii Realty Services LLC
dba Hawaii Life Luxury Properties
RB-22891, SRES, RSPS
Military Real Estate Professional (MRP)
808-492-8187
sandrasagisimarketing@gmail.com
www.hawaiilifeluxuryproperties.com



\$3,300,000

OCEAN VIEW RETREAT

Kamuela, HI | 5,075 SQFT
3.16 AC Land | 7BD/7BA
MLS#642870 | \$3,300,000

Enjoy expansive ocean views of the entire South Kohala Coast to Haleakala Volcano on Maui. Views also include four of the five Big Island Volcano Mountains of Mauna Kea, Mauna Loa, Hualalai and Kohala. This upscale, contemporary, completely remodeled 7 bedroom 7 bath home consists of 5 bedrooms and 5 baths in the main house with a separate 2 bedroom 2 bath Ohana. Off of the main house garage is a media/ game room, office, or possible eighth bedroom. It is located ten minutes from the best beaches, golf and resorts on the island. This is your perfect home office or corporate retreat away from home! Let Hawaii be your “safe place” this winter!



Donna Bowles
RB-21681
808-960-1445
donna@betterislandlifestyle.com
DJBowlesHawaii.com





\$3,200,000

THE MAUI CLIFFTOP HOUSE

Kahakuloa, Maui | 2,175 SQFT
2.85 AC | 3BR/3BA | MLS#386137
\$3,200,000

The famed Maui Clifftop House: where the worlds of architectural pedigree and comfortable island living merge in a secluded location at the edge of Maui’s dazzling blue waters. One of only two Maui properties to grace the cover of Dwell Magazine, and collector of numerous international architectural accolades, the Clifftop House exemplifies organic architecture with an informed sense of place: Ipe wood, bamboo, concrete, glass, and custom stucco colored with Maui sand combine to create a joyful place to call home.



Matt Beall
PRINCIPAL BROKER, RB-17738
Hawai‘i Life Real Estate Brokers
Direct: 808.346.7413
Email: matt@hawaiiilife.com

Liam S. Ball
REALTOR(B), RB-21691
Hawai‘i Life Real Estate Brokers
Direct: 808.280.7809
Email: liamball@hawaiiilife.com



\$3,199,000



ONE ALA MOANA PH #2200

Ala Moana, Oahu | 2,651 SQFT | 3BR/3BA
MLS# 202025153 | \$3,199,000

This luxurious penthouse offers breathtaking ocean and mountain views from an expansive, open floor plan with 10-ft high ceilings. This 3-bed, 3-bath home features his/hers walk-in closets, a large wine chiller, convection and steam ovens, laundry room with a separate service entrance, and 2 parking spots. This property truly feels like a single-family home. Enjoy the resort-like amenities such as a rooftop terrace, golf room, spa treatment, theater room, gym, infinity-pool and hot tub, several barbecue areas, jogging paths, and more. ONE Ala Moana is conveniently located above Ala Moana Center and just minutes away from restaurants, entertainment, and Ala Moana Beach Park.



Esther H. Park
REALTOR®, Senior Vice President
ABR CHMS CRS GRI SRS, RB-21002
808.489.6733
esther.park@sothebysrealty.com
한국어 서비스 가능



List

Sotheby's
INTERNATIONAL REALTY



\$2,995,000



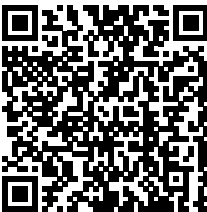
HOME OF MUSIC ICON
CARLOS SANTANA

Anahola, Kaua'i | 3,938 SQFT | 1.48 AC
4BR/4.01BA | MLS# 639783 | \$2,995,000

Imagine waking up to cool ocean breezes as the sun rises out of the ocean almost close enough to touch! This home, currently owned by **Carlos Santana** captured his heart when he first moved to Kauai. This spectacular home and guest house on 1.48 acres is perched on a hill just high enough to have a clear view of the Ocean with the waves breaking and palms swaying as well as a view of the stunning Kalalea Mountain from the kitchen and dining room. Each of the 3 bedrooms in the main house have equally outstanding views of the vast Pacific Ocean...Want to get away?
Video – <https://4961aliomanu.myporfolio.com>



Harvest Edmonds
RA, RS-56706
Emerald Isle Properties
808-443-8839
harvest@eipkauai.com
harvest.eipkauai.com



Emerald Isle Properties
Historic Plantation Stone Building
Lighthouse Rd, Kilauea



\$2,895,000



SPACIOUS KOHALA
RANCH ESTATE

South Kohala, Big Island | 6,042 SQFT | 12.11 AC
5BR/7.5BA | MLS# 628769 | \$2,895,000

This classic Hawaii ranch style house has huge ocean, coastline and sunset views with a backdrop of green rolling hills and mountains. Exceptional privacy and beautifully landscaped grounds that include a tennis court, pool, hot tub and great outdoor dining! The spacious master is separated from the guest suites by the comfortable great room & gourmet kitchen. Barbecue area, sauna and game room all add to this great house for entertaining and relaxing! Kohala Ranch is a gated community close to Kohala Coast beaches and resorts.



Margery Mayo
REALTOR® Broker in Charge | RB 17852
68-1330 Mauna Lani Drive, Suite 130
Kohala Coast, HI 96743
www.HapunaRealty.com
margerymayo@margerymayo.com
808.987.6385





\$2,888,000

KE KAILANI LUXURY VILLA

Kohala Coast, Hawaii | 3,371 SQFT
3BR/3.5BA | MLS# 641527
\$2,888,000

Ke Kailani 1A is a luxury villa, with new interior designer furniture and decor, positioned directly on the 5th hole of Mauna Lani Resort South Course with views of fairways and ocean. This Villa greets you with beautiful tropical courtyard entry with waterfalls and ponds. 2 Master Suites with fantastic golf course and ocean views. The Guest Suite has a separate courtyard entry. Living room with 2 story ceilings, Gourmet Kitchen and also an elevator added for convenience. Ke Kailani amenities include the exclusive Oceanfront Grotto Recreation Center with a pool, 2 spas, BBQ, dining pavilions and a full kitchen.



Ahmad Mohammadi
Principal Broker RB-21131
Hawaii Luxury Real Estate
ahmadtmo@gmail.com
808-640-1994

HAWAII LUXURY REAL ESTATE
MAUNA LANI RESORT OFFICE
One North Kaniku Drive
Kohala Coast HI 96743 | RB-21156
www.Hawaii-Luxury-Realestate.com

Genevieve Firestone
Realtor Salesperson, RS-70043
Hawaii Luxury Real Estate
genevievefirestone@gmail.com
808.896.4842



\$2,700,000



HUALALAI RESORT VILLA

Kailua Kona, Big Island | 2,755 SQFT | 3BR/3BA
MLS# 637070 | \$2,700,000

Hualalai Resort welcomes one of the finest Villas at Ke Alauala to the market. Highly updated, this corner end unit offers exceptional privacy and ocean view, while overlooking the 3rd & 4th fairways of the member's only Ke'olu Golf Course. This 3 bed/3bath multi-level layout incorporates the finest materials and design ensuring the comfort and serenity to be enjoyed while at Hualalai. Your villa is located minutes from the AAA 5 Diamond rated Four Seasons Resort Hualalai with world class amenities. Owners enjoy the resort offerings including a variety of ocean sport activities, world class golf laid out by the master Jack Nicklaus, lavish health and wellness spa treatments, and some of the finest oceanfront dining the Big Island has to offer.



Marco A. Silva
REALTOR®, Broker, RB-20599
808.557.8921 | Marco@KonaLuxuryRealEstate.com | KonaLuxuryRealEstate.com
Certified Luxury Home Marketing Specialist®
Certified Residential Specialist | Certified Negotiation Expert
2019 Top PERFORMER® Hawaii Business Magazine
2017 Top 100 REALTOR® Hawaii Business Magazine
2016 Top 100 REALTOR® Hawaii Business Magazine



M | MARCO A. SILVA
REALTOR®



COLDWELL BANKER
ISLAND PROPERTIES

\$2,690,000



BEACH FRONT NORTH SHORE LEGAL VACATION RENTAL

Haleiwa, Oahu | 1,624 SQFT | 4,931 SQFT Land
3BR/2BA | MLS # 202021575 | \$2,690,000



Tony Kawaguchi
RB-21841, RS-66616
808-351-9795
tony@alohatony.com
www.alohatony.com



\$2,600,000



75-1213 KEOPU MAUKA DR

Holualoa, Big Island | 5,081 SQFT
5.00 AC | 5BR/4.5BA | MLS# 644279
\$2,600,000

Incredible Holualoa Estate in Keopu on the Big Island of Hawaii! An architecturally stunning estate that has been revitalized offers you unblocked coastline, sunset and mountain views. Overlooking Kailua Bay, this delight has multiple family, entertaining and work areas with covered and open lanai space, highlighted all by privacy and tranquility. Adjacent to the Honua'ulu Forest Reserve will surely encourage the relaxed island lifestyle. On five acres of fenced land that include two separate pastures along with a riding arena, the opportunities for you to enjoy the equestrian lifestyle are here. White pineapple, variety of citrus, apple banana, papaya and avocado are a few of the wonderful island fruits currently being cultivated. Come home to the Holualoa Estate you've been waiting for!



Marco A. Silva
REALTOR®, Broker, RB-20599
808.557.8921 | Marco@KonaLuxuryRealEstate.com | KonaLuxuryRealEstate.com
Certified Luxury Home Marketing Specialist®
Certified Residential Specialist | Certified Negotiation Expert
2019 Top PERFORMER® Hawaii Business Magazine
2017 Top 100 REALTOR® Hawaii Business Magazine
2016 Top 100 REALTOR® Hawaii Business Magazine



M | MARCO A. SILVA
REALTOR®



COLDWELL BANKER
ISLAND PROPERTIES

\$2,495,000



CONTEMPORARY & WARM
WITH BI-COASTAL VIEWS

Kula, Maui | 3,079 SQFT | .65 AC
3BR/3.5BA | MLS# 389228 | \$2,495,000

Completely & meticulously renovated in 2020, this custom residence offers the quintessential Kula bi-coastal view experience! The stucco exterior walls & the glazed ceramic roof tiles, plus the copper gutters & downspouts, set the bar regarding quality. The elegant solid walnut front door is accentuated with finely detailed aluminum channels; a design theme present throughout the home. Upon entering you are mesmerized by the compelling view of the West Maui Mountains & the Central Valley below. Enjoy lofted white-washed ceilings, limestone floors, recessed LED & pendant art lighting in the great room & kitchen/dining areas. Haleakala.info



Robert H. 'Robbie' Dein
Broker-Owner, ABR, CRS, RSPS | RB-18398
Maui Real Estate Advisors, LLC
Direct: 808.250.3564
Robbie@MauiRealEstateAdvisors.com



Maui's Only Realtor Recognized as a 'Top 100 State of Hawaii Realtor' Among 15,000 + Hawaii Realtors (for 14 Consecutive Years),
Top 100 Hawaii Realtors Hall of Fame, Hawaii Business Journal 2006-2019

Kenneth M. 'Ken' Hayo
Principal Broker-Owner | RB-15529
Maui Real Estate Advisors, LLC
Direct: 808.283.8435
Ken@MauiRealEstateAdvisors.com



IN ESCROW



FIND SERENITY ~
MOANI HEIGHTS

Uplands at Mauna Kea, Big Island | 2,896 SQFT
4BR/4BA | MLS# 641825 | \$2,495,000

Moani Heights is located in a small gated community on the slopes of Mauna Kea Resort. The cul-de-sac location allows for quiet island living and easy access to all that resort living has to offer! Step through the gated entry into a serene shaded courtyard where tranquility abounds. As you walk towards the front door, you are greeted with tropical plantings and statuary that set the scene for what's inside! Understated elegance best describes this home, both inside and out....



Erik & Romy Jacobson
RB-21678, RB-21677
Corcoran Pacific Properties
808.345.9033 / 808.345.9989
Erik@JacobsonTeamHawaii.com
www.JacobsonTeamHawaii.com



The Jacobson Team
Hawaii Island Living



corcoran
PACIFIC PROPERTIES

\$2,400,000



**PANORAMIC OCEAN VIEWS
KEAUHOU ESTATES**
Kailua-Kona, Big Island | 4,117 SQFT
21,040 SQFT Land | 5BR/4.5 BA | MLS# 643346
\$2,400,000

Designed by famed local architect Roger Brasel features timeless quality with unique architectural style and generous living space. Keauhou to Kailua-Kona coastline views with warm tropical breezes, entertaining lanai with hot tub spilling into the infinity edge tiled pool. Home features stunning entry with parabolic curved wood ceiling, Honduran mahogany detailing, Hawaiian Ohia posts, spacious suites plus a guest wing, media room, chefs kitchen with large butler pantry, lava rock outdoor showers, and everlasting magical sunsets.



Renée H. Kraft
REALTOR® RB-23004
Better Homes and Gardens Real Estate | Island Lifestyle
808.345.2108
renee@searchhawaiiproperty.com
www.SearchHawaiiProperty.com



**DISTINCTIVE
COLLECTION**
by
**Better
Homes
and Gardens**
REAL ESTATE®
ISLAND LIFESTYLE

\$2,328,000



KOLEA KAI CIR UNIT 7F
Waikoloa, Big Island | 2,147 SQFT | 3BR/3.5BA
MLS# 636129 | \$2,328,000

Your safe haven in Hawaii. This single-level “Front-Row” Penthouse Villa checks all the boxes; an exclusive-use elevator & private foyer, breathtaking ocean, mountain & coastline views, garage, and a summer kitchen via disappearing pocket doors for seamless indoor/outdoor living. Within walking distance to golf, shopping & dining, KOLEA boasts an oceanside amenity center and is the Beach Resorts only community with direct beach access!



Annie Mendoza
REALTOR, (S)
808.557.5831
annie.mendoza@corcoranpacific.com



\$2,249,000



AN EQUESTRIAN PARADISE

Wailuku, Maui | 3,860 SQFT
2.69 AC | 5BR/3.5BA
MLS# 388772 | \$2,249,000

Maluhia Country Ranches is situated on the East side of the 5700 ft. high West Maui Mountain Range. It is a verdant, tranquil, peaceful environment, approx. 17 minutes to Maui’s County & State offices & Maui Memorial Hospital in Wailuku! The area affords endless ocean, coastal & glorious sunrise & moonrise views over Haleakala. Our sellers love their 3 horses & have nurtured them & built a beautiful barn, fenced their bucolic pastures, & manicured this slice of equestrian heaven! There are mesmerizing, vernal mountain & infinity ocean views from all 5 large bedrooms. Tall ceilings, arched entries, eight-foot tall thresholds, & light filled spacious rooms abound! **Kaukini.info**



Robert H. ‘Robbie’ Dein
Broker-Owner, ABR, CRS, RSPS | RB-18398
Maui Real Estate Advisors, LLC
Direct: 808.250.3564
Robbie@MauiRealEstateAdvisors.com



Maui’s Only Realtor Recognized as a ‘Top 100 State of Hawaii Realtor’ Among 15,000 + Hawaii Realtors (for 14 Consecutive Years),
Top 100 Hawaii Realtors Hall of Fame, Hawaii Business Journal 2006–2019

Kenneth M. ‘Ken’ Hayo
Principal Broker-Owner | RB-15529
Maui Real Estate Advisors, LLC
Direct: 808.283.8435
Ken@MauiRealEstateAdvisors.com



\$2,249,000



39606 HANA HIGHWAY

Kipahulu, Maui | 1,164 SQFT | 3.37 AC
2BR/1BA | MLS# 389272 | \$2,249,000

Oceanfront and bordered on both sides by streams and waterfalls, this plantation-style home is the perfect retreat. The 3 plus acres, zoned for conservation and agriculture, is completely off-grid, with a private well and photovoltaic system in place. The thoughtfully designed home captures dramatic views, enjoys consistent and comfortable air flow, and will take your breath away. This is Kipahulu at its finest. www.kipahuluoceanfront.com



Sam Utley
RB-23179
Island Sotheby’s International Realty
(808) 205-5088
samutley@me.com
MinoAndSam.com



Mino McLean
RB-21623
Island Sotheby’s International Realty
808.283.9613
mino@mauimino.com
MinoAndSam.com





\$2,180,000

KO'OLANI
PENTHOUSE #11
— KAKA'AKO

Honolulu, Oahu | 1,801 SQFT
2BR/2.5BA | MLS# 202020608
\$2,180,000

Contemporary island luxury awaits at Koolani, a masterfully upgraded two-story Penthouse retreat in Kaka'ako. Diamond Head, Ocean, Marina, and tranquil Koolau mountain vistas captivate throughout the open-concept floor plan. Anchoring the main living space is a newly installed Italian Snaidero chef's kitchen with metallic-lacquer cabinetry, European appliances, & extensive storage. Resort-style amenities include putting greens, walking paths, an infinity-edge pool, tennis courts, private theater room & more. One block from Ala Moana Center, Beach Park, Ward Village, Whole Foods, & more, experience a modern Honolulu lifestyle of luxury at Koolani Penthouse #11. Sale includes side-by-side wide parking spaces fitted with EV.



Sachi Braden

Sachi Hawaii
CEO, Founder, & Principal Broker | RB-16308
808.596.8801
info@sachihawaii.com | www.sachihawaii.com

ハワイの不動産売買、別荘管理、賃貸管理に関するお問合せは日本語でどうぞ
サチハワイ総合不動産会社ーハワイ高級物件のエキスパート



\$1,998,000



KALELE KAI TOWNHOUSE

Hawaii Kai, Oahu | 2,222 SQFT
3BR/2.5BA | MLS# 202020581 | \$1,998,000

This townhouse offers the best of both worlds: the benefits of a single-family home combined with the amenities, security and ease of ownership of a condominium! Treat yourself to gorgeous waterfront marina views as well as the access to marina activities. Exquisitely renovated from top to bottom, you'll love the gourmet kitchen with Sub-Zero and Miele appliances, Downsview cabinets and quartz countertops. The private master suite encompasses the marina front bedroom, lanai, sitting area loft and an elegant bathroom complete with washer/dryer. You'll enjoy amenities including a swimming pool with whirlpool spa and Clubhouse with facilities to entertain, including a kitchen and barbecues.



Jeffrey M. Fox

(R) CLHMS, CRB, CRS
Corcoran Pacific Properties
RB-17230
808.292.5333
Jeffrey.Fox@corcoranpacific.com





\$1,300,000

180 DEGREE SPECTACULAR OCEAN VIEW

4.75 AC | MLS# 633546 | \$1,300,000

Rare acreage on the South Side of Kauai. 4.75 acres of manicured land with spectacular ocean views overlooking the Poipu shoreline and the forbidden Island of Niihau. Minutes to beautiful beaches, first class golf, fine dining and airport, yet you are above the fray at 1,100 ft elevation looking only at tropical vegetation, blue sky and ocean. Driveway is paved, water and electricity to the lot. You are ready to build your dream home on Kauai. Wake up to the sun rising in the east over the ocean and end your day with a setting sun over Niihau on the west side. This is a uniquely beautiful property that must be seen to be truly appreciated.



F. Lee Morey
PB, Lic.# 15886
F. Lee Morey, BROKER/REALTOR®
2-2514 Kaumalii Hwy, Ste. 216
Kalaheo, HI 96741
808.651.6720
f.leemorey@gmail.com
www.fleemoreybroker.com

Invest In Your Dreams



\$1,298,000



ELEGANT FURNISHED CONDO

Honolulu, Oahu | 978 SQFT | 2BR/2BA
MLS# 202025132 | \$1,298,000

Move right in to this fully furnished elegant Ae'o condo in one of the most sought after communities in Honolulu. Discerningly curated furnishings and art pieces by a professional interior designer have created a wonderful place to call home. Inspired by the azure palettes of the ocean and open sky views, the decor also features pops of color reflecting our Island beauty. You'll also love the exceptional resort-like amenities. This condo features a large, enclosed storage unit right next to the two parking stalls equipped with EV charging for your electric car conveniently located on the second floor with easy access to Whole Foods!



Jeffrey M. Fox
(R) CLHMS, CRB, CRS
Corcoran Pacific Properties
RB-17230
808.292.5333
Jeffrey.Fox@corcoranpacific.com





Luxury Rentals

*Managing an Exclusive Collection of Hawaii's
most Luxurious Beach Estates*

available for monthly rentals

Jenny Kono & Sasha Capone
Follow Us: @HawaiiisLuxuryHomes



Corcoran Pacific has your home in Hawaii.

Locally owned and operated since 2005.
(Formerly Elite Pacific Properties)

corcoran
PACIFIC PROPERTIES

KAUAI | OAHU | MAUI | HAWAII ISLAND | CORCORANPACIFIC.COM

©2020 Corcoran Group LLC. All rights reserved. Corcoran® and the Corcoran Logo are registered service marks owned by Corcoran Group LLC. Corcoran Group LLC fully supports the principles of the Fair Housing Act and the Equal Opportunity Act. Each Office is independently owned and operated.



MELE KALIKIMAKA & HAU'OLI MAKAHIKI HOU

FROM THE LUXURY HOME MAGAZINE® OHANA

At Compass, our mission is to help everyone find their place in the world. We are honored the following people have found their place at Compass.

A SPECIAL THANK YOU TO OUR LEADERS ON THE ISLANDS

DEBBIE ARAKAKI,
PRINCIPAL BROKER | MAUI

MATT GABRIEL,
BROKER IN CHARGE | OAHU

SEAN AHEARN,
BROKER IN CHARGE | KAUAI

MARGARET REYNOLDS,
BROKER IN CHARGE | BIG ISLAND

COMPASS.COM

COMPASS

Greg Burns is a real estate licensee affiliated with Compass, a licensed real estate broker and abides by equal housing opportunity laws.



Greg Burns

MAUI

When operating at the highest levels of performance in real estate it is critical to have the support team operating at that same level! Compass provides that support with a team driven and focused around my success.

COMPASS

GREG BURNS
REALTOR®

808.214.0302
greg.burns@compass.com

islexury.com

Debbie Arakaki is a real estate licensee affiliated with Compass, a licensed real estate broker and abides by equal housing opportunity laws.



Debbie Arakaki

MAUI

I will still be the local expert and neighborhood specialist you've known for the past 15 years, now powered by industry-leading tools and programs that will allow me to create an incredible real estate experience for all of my clients.

COMPASS

DEBBIE ARAKAKI
Principal Broker

808.283.7214
debbie.arakaki@compass.com

debbiearakaki.com

Nicole Vincent is a real estate licensee affiliated with Compass, a licensed real estate broker, and abides by equal housing opportunity laws.



Nicole Vincent

HAWAII ISLAND

I am impressed with how Compass leverages the best sales and marketing technology in an industry where human connectivity is still the rule rather than the exception. I am thrilled to be a founding member at Compass as their vision is clearly aligned with the future and how to complement my business and better serve my clients.

COMPASS

NICOLE VINCENT
REALTOR® Broker

808.895.5455
nicole.vincent@compass.com

nicolevincent.com



Tom Loratta & Tony L. Pinkert

HAWAII ISLAND

As founding members of Compass in the State of Hawaii, we are honored to be part of a network of our nation's top performing agents. Compass' sophisticated brand is highly recognizable to our luxury resort clients. Compass is the future of real estate and their contemporary vision will continue to enhance our performance as leading agents.

COMPASS

TOM LORATTA | TONY L. PINKERT
REALTOR® Broker | REALTOR®

808.895.5548 | 808.989.4900
Tom@TomLoratta.com | Tony@TonyPinkert.com

pinkertloratta.com

Tom Loratta & Tony L. Pinkert are real estate licensees affiliated with Compass, a licensed real estate broker, and abides by equal housing opportunity laws.

Michael Shower is a real estate licensee affiliated with Compass, a licensed real estate broker and abides by equal housing opportunity laws.



Michael Shower

OAHU

As a Founding Member of Compass in Hawaii, I am most excited to now be able to offer my clients an incredible combination of the best technology in the industry with my years of experience and market knowledge here on Oahu! Merging the game changing technological and agent networking model of Compass Real Estate with my determined and vigorous approach to serving my clients is a career highlight. I can't wait to share the future of Residential Real Estate with my clients.

COMPASS

MICHAEL SHOWER
REALTOR®

808.375.4811
michael.shower@compass.com

michaelshower.com



Dennis Rush & Martha Rush

MAUI

Happiness is Compass Navigating to Maui! We love the experience, culture and creativity! Humbled to be a Hawaii Founding Agent for our new journey.

COMPASS

DENNIS RUSH | MARTHA RUSH
REALTOR® Broker(s)

808.280.0788
dennis.rush@compass.com

dennisrush.com

Dennis Rush & Martha Rush are real estate licensees affiliated with Compass, a licensed real estate broker and abides by equal housing opportunity laws.

Sean Ahearn & Jim Karlovsky are real estate licensees affiliated with Compass, a licensed real estate broker and addres by equal housing opportunity law.



Ahearn / Karlovsky

KAUAI

We consider ourselves extremely fortunate to be Founding Brokers for Compass on Kauai. This represents a significant opportunity to leverage the power of the Compass Marketing Center for our clients. We've been exposed to some of the best brands in Hawaii Real Estate and the reach we have already experienced from Compass Agents across the nation has been transformative indeed. Powerful stuff. Aloha Compass

COMPASS

SEAN AHEARN / JIM KARLOVSKY
REALTOR®, BIC / REALTOR® Broker

800.808.6373
aloha@akkauai.com

ahearnkarlovsky.com



Alesia Barnes

OAHU

The Barnes Hawaii Group is excited to join the Compass team, and I am thrilled to be a founding member in Hawaii. Compass is the fastest-growing luxury real estate company with innovative technology-based platforms which will enhance the overall real estate transaction experience for clients and agents.

COMPASS

ALESIA BARNES
REALTOR® Broker

808.397.7928
alesia.barnes@compass.com

barneshawaii.com

Alesia Barnes is a real estate licensee affiliated with Compass, a licensed real estate broker and addres by equal housing opportunity law.

Jason Carey is a real estate licensee affiliated with Compass, a licensed real estate broker, and abides by equal housing opportunity laws.



Jason Carey

OAHU

COMPASS

I am thrilled to announce I have joined Compass Hawaii as a Founding Agent. Compass combines a solution-driven mindset with the sophistication of a luxury brand. Powered by the most innovative real estate technology and customized marketing strategies available, Compass allows me to further elevate and redefine the agent-client experience.

JASON CAREY
REALTOR®

808.679.1698
jason.carey@compass.com

careyluxury.com



Yvonne Jaramillo Ahearn

OAHU

COMPASS

My number one priority is my clients. And the foundation of my business has always been providing my clients with the ultimate service, marketing, and tools to achieve their ideal Hawaiian lifestyle. So, of course, it made perfect sense to become a Founding Broker on Oahu with Compass. With all the advantages Compass provides both clients and agents, I can take the premier client service and excellent results that I have become known for on Oahu to an even higher level.

YVONNE JARAMILLO AHEARN
REALTOR® Broker

808.721.8088
yvonne.ahearn@compass.com

luxuryhomesohu.com

Yvonne Ahearn is a real estate licensee affiliated with Compass, a licensed real estate broker, and abides by equal housing opportunity laws.



Donna Duryea

OAHU & HAWAII ISLAND

I am thrilled and honored to be a founding member of Compass in Hawaii! After 20+ years helping my clients buy and sell homes, I'm excited to be joining the most cutting edge brokerage firm in the real estate industry. Combining my decades of market knowledge and diligent personal care with modern technology, I look forward to bringing our client's transactional experiences to new heights. This is the future of Residential Real Estate. This is The Duryea Group at Compass.

COMPASS

DONNA DURYEA
REALTOR®

808.987.4511
donna.duryea@compass.com

compass.com/agents/donna-duryea



Amy Frazier & Billy Eckert

KAUAI

We are constantly searching for ways to better our client's Real Estate experience. Compass offers the total package with unrivaled technology, user-friendly platforms and the ultimate support systems that allow us to seamlessly service our Buyer's and Seller's without skipping a beat.

COMPASS

AMY-FRAZIER & BILLY ECKERT
REALTOR(S)®

amy.frazier@compass.com
808.639.9011

billy.eckert@compass.com
808.212.6658

amyandbilly.com

now touring

HAWAII'S MOST SPECTACULAR BEACHFRONT RESIDENCES

Awaken to the sound of waves, steps from the best beach on the Big Island, at the legendary Mauna Kea Resort. Residences are supremely private, exquisitely appointed and graced by lavish resort amenities. These are the last and most rare absolute beachfront residences in all of Hawaii. From \$1.8M to \$9M.

First owners moving in | 20+ residences in escrow



Hapuna Beach Residences

AT MAUNA KEA RESORT

808.557.8689 Info@MaunaKeaLiving.com MaunaKeaLiving.com

When not in residence, properties may be placed in the resort rental program.

© 2023 Mauna Kea Living. All rights reserved. Mauna Kea Living is a registered trademark of Mauna Kea Living. All other trademarks are the property of their respective owners. The information herein is for informational purposes only and does not constitute an offer of real estate. The information herein is not to be used in any way to solicit a sale of real estate. The information herein is not to be used in any way to solicit a sale of real estate. The information herein is not to be used in any way to solicit a sale of real estate.



\$8,475,000

PUAKO'S
PREMIER LUXURY
BEACHFRONT HOME

**Puako, Big Island | 4,416 SQFT
16,285 SQFT Land | 4BR/5+2HLF BA
MLS# 640347 | \$8,475,000**

Hale Nana Kohola (The Whale Watch House) is Puako's premier luxury beachfront vacation home with gorgeous ocean, sunset, Kohala and Maui views. There is nowhere more beautiful to spend your days! The resort/hotel zone allows a 45-foot building height, allowing this dramatic architecture with an observation deck where you can enjoy whale watching. This tropical retreat offers 4 suites + media room with full bath, heated infinity saltwater pool, office, and 1,715 SQFT of lanais in beautiful and private tropical garden settings. This popular vacation home with approved STVR registration has exceptional rental history with repeat clientele. Offered furnished.



Tomoko Matsumoto
REALTOR® Principal Broker, Owner
Hapuna Realty
68-1330 Mauna Lani Drive, Suite 130 Kohala Coast, HI 96743
www.HapunaRealty.com | Tomo@HapunaRealty.com
808.557.8689



\$19,900,000

BRAND-NEW
CONTEMPORARY
LUXURY BEACHFRONT
ESTATE

**Puako, Big Island | 5,360 SQFT
2.007 AC | 5BR/6+2HLF BA
MLS# 640170 | \$19,900,000**

Puako Bay Lot 1, known as Kahieluana (a place to relax and enjoy the company of loved ones), is one of the most amazing offerings in the area. The brand-new, contemporary yet comfortable residence is located on a terraced and elevated 2+ acre bayfront parcel in charming Puako on the Kohala Coast. It is the ultimate dream estate with 5 master bedrooms + a bunk room/office, tennis court, swimming pool, sand volleyball court, and small black sand bay in front! Amazing sea life abounds in the nearby reef with turtle cleaning stations, colorful tropical fish, and manta and spotted eagle rays. Beach 69, a local secret, is only a 10-minute walk. Offered furnished.



Tomoko Matsumoto
REALTOR® Principal Broker, Owner
Hapuna Realty
68-1330 Mauna Lani Drive, Suite 130 Kohala Coast, HI 96743
www.HapunaRealty.com | Tomo@HapunaRealty.com
808.557.8689



LUXURY HOME

MAGAZINE

6800 Kalanianaʻole Hwy., Suite 101 Honolulu, HI 96825

Hawaii, we're honored to be here

NOW OPEN

MAUI

OAHU

KAUAI

BIG ISLAND

compass.com

Compass is a licensed Real Estate Broker and abides by Equal Housing Opportunity Laws.



COMPASS