

LUXURY HOME[®]

M A G A Z I N E

Hawai'i KAUAI • OAHU • MAUI • MOLOKAI • LANAI • BIG ISLAND

ISSUE 16.1



At The Newsstand: \$7.99

LUXURYHOMEMAGAZINE.COM

Makila Modern on Maui, See Pages 22 & 23
Presented by Robert H. Dein & Kenneth M. Hayo



#2801 \$3,380,000

- 3 BD / 3 BA, 1,939 sf
- Ocean, Mountain, Beach Park, Marina & Sunset Views

#601 \$2,150,000

- 2 BD / 2 BA, 1,567 sf
- Ocean, Sunset & City Views



#3700 \$2,288,000

- 3 BD / 3 BA, 1,331 sf
- Ocean, Mountain, Beach Park, Marina & Sunset Views

#2912 \$1,320,000

- 2 BD / 2 BA, 938 sf
- Ocean, Mountain & Beach Park Views



Penthouse 3201 \$8,950,000

- 3 BD + Office / 3.5 BA, 3,033 sf, Lanai 366 sf
- Diamond Head, Ocean, Mountain, Beach Park, Marina & Sunset Views

#2306 \$3,685,000

- 3 BD / 2.5 BA, 2,023 sf, Lanai 76 sf, Foyer 136 sf
- Diamond Head, Ocean, Mountain, Beach Park & Marina Views

#1203 \$1,950,000

- 1 BD / 2 BA, 1,139 sf, Lanai 69 sf
- Ocean, Marina, Mountain & Sunset Views



#15G \$2,288,000

- 2 BD / 2 BA, 1,620 sf, Lanai 27 sf
- Diamond Head, Ocean, Mountain & Beach Park Views



#4502 \$1,825,000

- 3 BD / 2 BA, 1,527 sf, Lanai 46 sf
- Ocean, Beach Park & Sunset Views



John "Jack" Tyrrell
President
Principal Broker, CRS, CRB
CPA (not in public practice)
Lic. # RB-19880
E: Jack@jtchawaii.com
C: 808.306.6933



May Lew Tyrrell 廖富漢
Executive Vice President
Broker-In-Charge, MBA, GRI, CRS, CRB, CIPS
Lic. # RB-22693
WeChat: Mayinhawaii (普通话)
E: May@jtchawaii.com
C: 808.223.3364



" We specialize in Ward Village and luxury condo sales and have sold \$600 million in the past 14 years "



For More Information:
808 532 3330
www.jtchawaii.com

f Jack Tyrrell & Company
@jtchawaii
@jtchawaii

JACK TYRRELL & COMPANY

A Real Estate Brokerage Corporation

* The information presented herein is provided as is, without warranty expressed or implied of any kind. Information herein deemed reliable but not guaranteed.



\$3,850,000



4675 AUKAI AVENUE

Honolulu, Oahu | 4,023 SQFT
11,355 SQFT Land | 4BR/4BA
MLS# 202032180 | \$3,850,000

This fabulous single level 4-bedroom + separate studio cottage island home is located on one of Kahala’s most prized streets. A casual open floor plan offers beautiful hardwood floors, open beam tongue & groove ceiling details, lovely kitchen w/ large windows, center cooking island & a cozy breakfast nook. An intimate master suite complete w/ custom built-in cabinetry connects to outdoor covered lanais w/ a jetted spa & poolside entertaining areas. Lush tropical landscaped grounds provide privacy & the perfect setting for weekend relaxation. This ideal location is close to restaurants, shops, golfing & just a short stroll to the sandy shores of Kahala Beach.



\$5,675,000



4631 WAIPAHEE PLACE

Honolulu, Oahu | 6,087 SQFT
16,614 SQFT Land | 4BR/5.5BA
MLS# 202100542 | \$5,675,000

Stunning single level golf course frontage, executive home offers numerous custom details throughout. The Great Room welcomes you with impressive 12-ft ceilings, oversized crown molding details & built-in display cabinetry. Full height windows create light filled interior spaces & overlook tropical gardens w/ Koi ponds. Pocketing walls of glass open to reveal a covered lanai w/BBQ alcove, tiled pool w/tranquil waterfall & over 193 linear ft of gorgeous golf course frontage. Large master suite w/ private office niche is a dream w/ beautiful garden, golf course & Diamond Head views. This notable residence situated on a peaceful cul de sac, is truly fabulous!



Tracy Allen
Vice President, RA, RS-46610
Global Luxury Ambassador
Luxury Property Specialist
808.927.6415
Tracy@CBRealty.com
www.TracyAllenHawaii.com
#1 Agent in Hawaii, Coldwell Banker Realty



\$2,995,000



1212 HUNAKAI STREET

Honolulu, Oahu | 3,560 SQFT | 9,862 SQFT Land
4BR/3BA | MLS# 202100208 | \$2,995,000

Wonderful single level home in desirable Kahala was designed by notable architect Peter Vincent & the 2018 BIA-Hawaii Grand Award winner. The spacious open floor plan offers vaulted ceilings, custom lighting, wood floors, Fleetwood sliding doors & overlooks a lovely garden w/ natural pond & waterfall. Double doors lead to the master suite providing a private sanctuary w/ sizeable walk-in closet & spa-like bath. The kitchen is equipped w/ professional appliances and an island w/ counter seating. An outdoor built in BBQ niche includes a gas grill & wok for weekend entertaining. This home is ideal for those wanting to walk to nearby shopping, dining, medical facilities & more!



Tracy Allen
Vice President, RA, RS-46610
Global Luxury Ambassador
Luxury Property Specialist
808.927.6415
Tracy@CBRealty.com
www.TracyAllenHawaii.com
#1 Agent in Hawaii, Coldwell Banker Realty



© 2021 Coldwell Banker Realty | 1314 S King Street, 2nd Floor Honolulu, Hawaii 96814 | (808) 927-6415 The information contained herein, while not guaranteed, has been obtained from sources believed to be reliable. All square footages are approximate and may differ from the tax records.

\$2,650,000



KA'ANAPALI ALII UNIT 1-304

Kaanapali, Maui | 1,523 SQFT
2BR/2BA | MLS# 389551
\$2,650,000

Luxury living and sweeping ocean views await in Ka'anapali Alii Unit 1-304! Overlooking the inner courtyard, this 2 bedroom, 2 bathroom residence features a spacious floor plan and elegantly updated finishes. Stylishly accented with custom lighting, granite countertops, stainless steel appliance and natural stone flooring, this beach-side abode truly has it all. Come experience all the Ka'anapali lifestyle has to offer from your private luxury condominium today!



Leah Harbottle
Realtor®-Broker, Lic. #22910
Cell: 530.906.9180
Toll Free: 866.661.7887
Fax: 808.661.8358
Leah-Whalers@KW.com
www.KaanapaliLuxuryLiving.com



Gregory Harbottle Inc. R (PB)

Luxury Property Specialist, Lic. #19615
Cell: 808.385.8059
Toll free: 866.661.7887
Fax: 808.661.8358
ghrthkh@msn.com
www.KaanapaliLuxuryLiving.com





* Founding or Prestigious Member

THE ISLAND OF MAUI

Amber M Lee	Front Cover, 16-17
Billy Jalbert	64
David W. Richardson	50
Debbie Arakaki	
Dennis Rush	
Diane K. Pool*	
Greg Burns	
Gregory Harbott	
Josh Jerman	
Kenneth M. 'Ken	
Leah Harbottle*	
Liam S. Ball	
Linda Hedden	
Martha Rush	
Matt Beall	
Mino McLean	
Peter Neu	
Riette G. Jenkins	
Robert H. 'Robbi	
Robert R. Myers	
Rhonda Smith S	
Sam Utley	
Tim Stice	

THE ISLAND OF OAHU

Amy Frazier	
Ben Welborn	
Billy Eckert	
F. Lee Morey	
Hannah Sirois	
Harvest Edmond	
Jim Karlovsky	
Sean Ahearn	
Tiffany Spencer	

THE ISLAND OF KAUAI

Mary Anne Fitch	
Nam L. Le Viet*	

BUSINESS

Compass	
Corcoran Pacific	
Padilla Designs,	

NOTES

THE ISLAND OF OAHU

Alesia Barnes	103
Esther H. Park*	75
Jason Carey	104
	89, 91
	2-3
	9
	2-3
	100
	25
	30-31, 44, 52, 67
	25
	88
	72
	80
	4-6
	57
	71
	105

D

	56, 78
	85
	22
	45
	73
	34, 106
	65
	83
	34
	56, 78
	108-109
	19-21, 53
	45
	20-21
	62-63, 79, 81
	77
	98
	59
	84
	40, 99
	110-111
	41, 99
	51

RENTALS

	92
--	----

RESEARCH

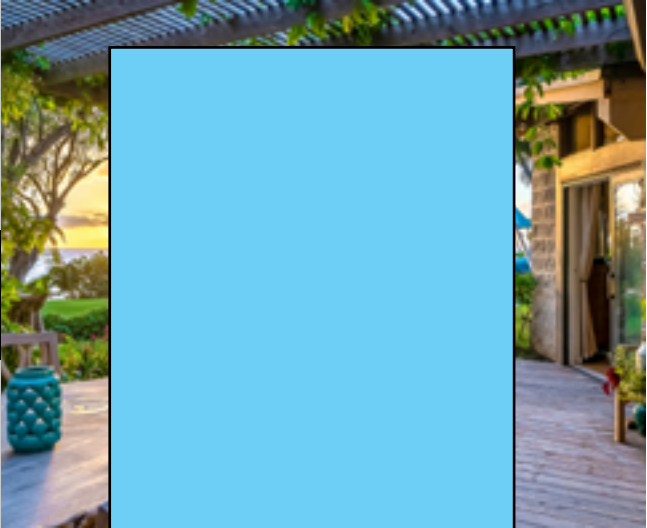


Photo by JBH Life Media

LUXURY HOME MAGAZINE® OF HAWAII™
PACIFIC LUXURY LIVING™
6800 Kalanianaʻole Hwy., Suite 101
Honolulu, HI 96825
Phone: 808.499.5491 • Fax: 916.404.8867

FOR ADVERTISING INFORMATION VISIT:

luxuryhomemagazine.com

info@lhmhi.com

The most comprehensive and targeted distribution in the area, bar none!

LHM Media Group

Phone: (916) 458-6010
info@lhmmediagroup.com
LuxuryHomeMagazine.com

Visit Our Blog:
LuxuryHomeMagazine.com/blog

Chief Executive Officer
Solar Hing

Chief Operations Officer
Jessica Hing

Publishing Opportunities
publishing@lhmmediagroup.com

Published six times per year
©2021 LHM Media Group

Luxury Home Magazine®, Luxury Living and Lifestyle™ and LuxuryHomeMagazine.com are protected trademarks of LHM Media Group. Publisher is an authorized Independent Distributor and Licensee for a market specific area of Luxury Home Magazine®, Luxury Living and Lifestyle™ and LuxuryHomeMagazine.com. Publisher is licensed through LHM Media Group. LHM Media Group is not responsible for the contents of the magazine or the acts or omissions of the publisher or its representatives and makes no representations or guarantees. Reproduction in whole or in part (including materials, photos and formats) in any form without written permission from LHM Media Group is prohibited. All submissions become the property of LHM Media Group and may be used in any print, digital, social and online media. All rights reserved.

The information contained in *Luxury Home Magazine®* is deemed reliable, but not guaranteed. Contact each individual agent to verify information, which is subject to change.



Made and Printed in the USA.

\$18,000,000



600 HAUMANA ROAD

Haiku, Maui | 5,938 SQFT | 73.21 AC
5BR/4.5BA | MLS# 389740 | \$18,000,000

Maui oceanfront 73-acre estate with maximum privacy, security, and open space. This is the 1st time ever this estate has been offered for sale. The parcel encompasses Kealii Point between Uaoa Bay and Pilale Bay with nearly a 1/2 mile of coastline and no neighbors in sight. The elegant Palm tree-lined driveway leads to the approx. 6,000 sqft, 5 bedroom, 4.5 bathroom home plus a gym. Additionally, there's a 2,000 sqft shop with lots of room for ATVs, jet skis, boards and more. The property is a short twenty-five minute drive from Kahului airport or helicopter to your front door in a matter of minutes. This is the crown jewel of the North Shore.



Tim Stice
REALTOR (B) - RB-21556
808.268.8511 | timstice@hawaiiilife.com



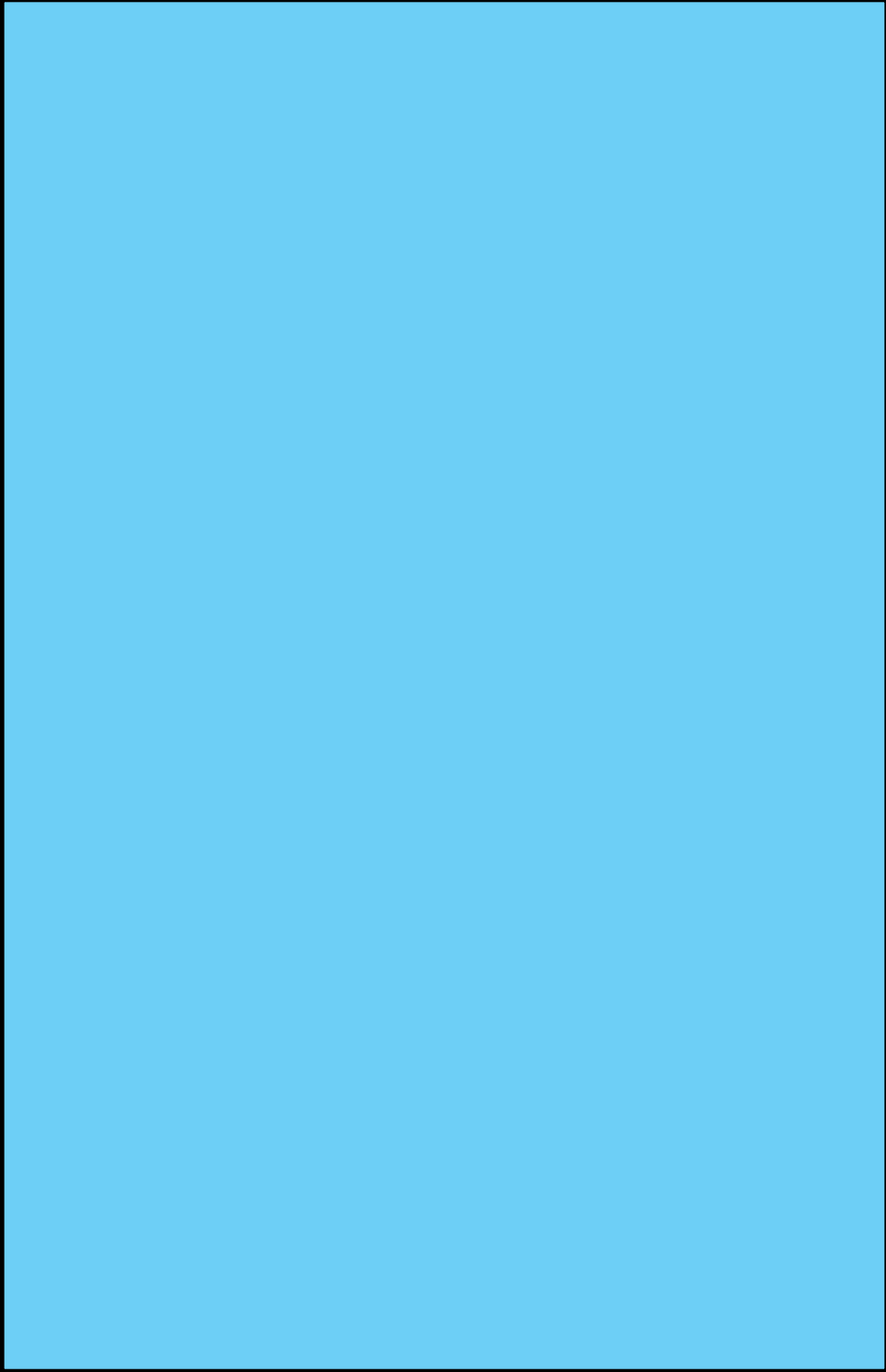
HAWAII LIFE



Josh Jerman
REALTOR(B), RB-19728
808.283.2222 | Josh@HawaiiLife.com



Aloha from Maresa



Custom Interior & Exterior Functional Art
SERVING ALL HAWAIIAN ISLANDS & BEYOND



PLEASE VISIT OUR GALLERY
padilladesigns.com

808 879 0938



\$17,000,000



DISTINCTIVE ESTATE HOME AT KOHANAIKI

Kohanaiki, Big Island | 4BR/4.5BA | MLS# 637909 | \$17,000,000

Zak Architecture created a crisp and clean symmetrical plan in their signature contemporary Hawaiian style, as the Douglas Durkin Design team simultaneously developed the rich color palette of the finest architectural and interior design materials. The firm of Metzler Contracting was engaged to bring together these materials and concepts to create this singularly beautiful home. The Owners have wonderful taste and communicated the desire to build a home that captures the look and feel of the Big Island and its culture. Some of the finest craftspeople were called upon to create bespoke furnishings, including hand tufted silk and wool carpets from V'Soske of New York, hand printed fabrics produced by Pintura Studios of New York, custom designed and carved plantation teak furniture, and outdoor suites of furniture produced by Warisan of Indonesia, Tom Sellars Woodworking and Luis Rossi of San Francisco, and the sophisticated custom hanging light fixture by Aqua Creations. New York artist Nancy Lorenz was commissioned to create a magnificent series of five lacquer wall panels for the Great Room, in rough hewn wood and layers of lacquer and gold to emulate the sea. This is a very special home in a very special place, executed with an extraordinary vision, level of quality and attention to detail.



Joni J. Metzler

(R) B

Metzler Realty
808.640.6832

Joni@MetzlerRealty.com
www.MetzlerRealty.com





\$15,800,000



MAUNA KEA BLUFFS

Kamuela, Big Island | 8,141 SQFT
45,796 SQFT Land | 4BR/5.2BA
MLS# 645708 | \$15,800,000

With a Grand—prize winning green design by Roth, Kimura architects, this contemporary, custom, luxury residence has 2,750 sqft of outdoor entertaining space, an infinity-edge 25-meter pool, sandy beach area with toddler depth ponds, and jacuzzi hot tub. Amazing mountain and ocean views for winter whale watching. With triple-gated access, it is located at the end of a cul-de-sac at the Bluffs of Mauna Kea on the Kohala Coast. The Bluffs is nestled between two world-class resorts (Mauna Kea and Hapuna) with magnificent beaches easily accessible by walking trails or by golf cart. As owners, the Mauna Kea Resort offers a Platinum club membership with signing privileges and preferential access to resort amenities: golf, beaches, tennis, fitness, salon, spa and dining.

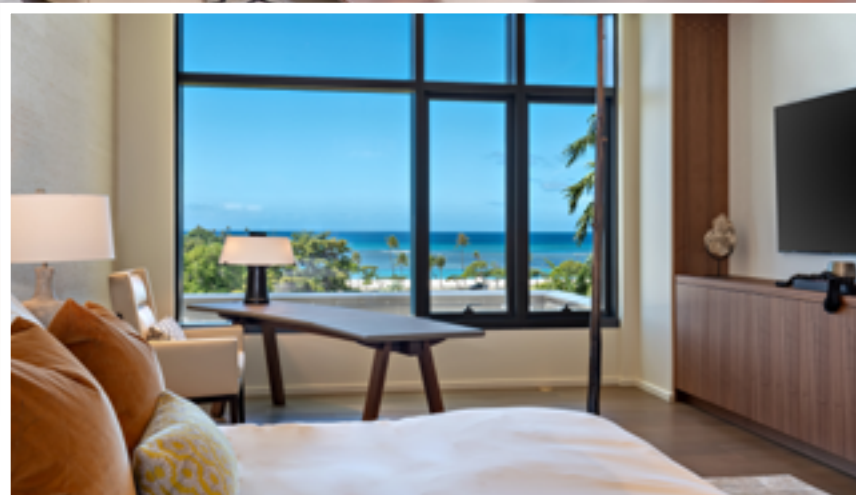


Yvonne Khouri-Morgan
Realtor Broker
Luxury Kohala Coast Resorts
808-937-4466
Yvonne@alohalife.net
www.HawaiiResortLuxuryHomes.com
www.MaunaLaniRealty.com



Josh Jerman
REALTOR(B), RB-19728
808.283.2222 | Josh@HawaiiLife.com





PARK LANE ALA MOANA

Honolulu, Oahu | 4792 SQFT | 4BR/3.5BA | MLS# 202022019 | \$12,745,000

First-time-to-market, a rarely available, Four Bedroom Park Residence at Park Lane Ala Moana, Honolulu's preeminent luxury development. This Penthouse sized home, situated along the namesake Park Lane walk-way, is for the most discerning buyer. From this home, enjoy lush, tropical landscaping outside your back windows and direct ocean views out front. The interior design and custom upgrades in this

home were done by award winning luxury design firm Philpotts Interiors and includes custom built-in Walnut cabinetry by Logan White, Master walk-in closet by Poliform, Designer light fixtures by Holly Hunt, Johnathan Browning, Bocci and Boyd, and a world class audio visual package by Blueprint Audio Visual. *Email agent for property video and 3D Matterport virtual tour.*



HAWAI'I LIFE

Forbes
GLOBAL PROPERTIES

Noel Pietsch Shaw
MBA, S. Realtor-Associate, RS-75888
HAWAI'I LIFE
EXCLUSIVE MEMBER OF
FORBES GLOBAL PROPERTIES
808.221.8889
noelshaw@hawaiilife.com



LuxuryHomeMagazine.com



\$12,000,000



2 ACRE PRIVATE MAKENA ESTATE ON MAUI

Makena, Maui | 6,510 SQFT | 2 AC
4BR/4.5BA | MLS# 388508 | \$12,000,000

This private two-acre estate in Makena complements the natural elements and is connected to the land. “Makena” translates from Hawaiian as “gathering place” or “abundance.” Fruit trees and 116 solar panels help you embrace that abundance, as well as a renewable lifestyle, situated on Ahihi Bay, with swimming, snorkeling, and ocean activities at your doorstep. There are seven structures spanning across the two acres encompassing a large kitchen and dining area, a master bedroom suite, two private guest suites, a theater room, gym, office, an ‘ohana, and a three-car garage.



Josh Jerman
REALTOR(B), RB-19728
Hawai'i Life Real Estate Brokers
Direct: 808.283.2222
Email: josh@hawaiilife.com



Matt Beall
PRINCIPAL BROKER, RB-17738
Hawai'i Life Real Estate Brokers
Direct: 808.346.7413
Email: matt@hawaiilife.com



\$11,500,000



“KA MAUNA ALOHA”

Kula, Maui | 7,102 SQFT | 3BR/4BA
MLS#389258 | \$11,500,000

This is a once-in-a-lifetime opportunity, situated on 5.276 acres you will pass through the private gates and enter a long, tree-lined, driveway to the finest, architect-designed estate in Upcountry Maui. The custom residence is 7,261 sf and features 3 bedrooms, 3 baths, 2 half-baths, impeccably appointed Chef's kitchen, 2 offices and a library. Outdoors is a heated pool, spa, sauna, pool house and 3-car garage. Separate private yoga studio. Included is an additional lot, .822 acres with 5/8” water meter. At an ideal elevation of 2,700 ft, the panoramic bi-coastal views are breathtaking. Peace and serenity await the new owners of this exquisite manor.



Riette G. Jenkins
Managing Director of Global Luxury
Realtor-Broker, RB-17543
808.870.4073
riette@waileahawaii.com
waileahawaii.com





MAUI GOLD COAST-TWO OCEANFRONT PARCELS

Kihei, Maui | 30,056 SQFT Land | MLS# 388360
\$10,500,000

RARE OFFERING.....2 parcels at the very north end of a quiet residential street. Over 205 LINEAR FEET of frontage in this epic beachfront setting!! 2 contiguous lots comprising 30,035 sq.ft.; lot #1 is 18,527 sq.ft. and lot #26 is 11,508 sq.ft. Seller's preference is to sell as one. The land is perched on a small knoll maximizing views of the West Maui Mts and stellar year round sunsets. All utilities to site. Price upon request.



HAWAII LIFE



David W. Richardson

(R)B 10780

Hawaii Life Real Estate Brokers

Direct 808-870-9916

www.MauiOceanfront.com

Dave@HawaiiLife.com

HL-1 Director | "Top 2 agent on Maui 2018"



Cover Home

\$9,995,000



WELCOME TO 'MAKILA MODERN'

Launiupoko, Maui | 6,612 SQFT Under Roof | 4,677 INT. SQFT | 5.41 Acres | 4BR/3.5BA | MLS# 389735 | \$9,995,000

This Contemporary, Modern Residence designed by renowned Maui architect Rick Ryniak, captures the beauty of its surroundings, morning sunrises over the West Maui mountains & mesmerizing sunsets over Lanai. The sophisticated design choices; cantilevered roofs, clean lines, 10' floor-to-ceiling windows & Fleetwood pocketing doors are consciously minimalist, allowing the beauty of Maui to dominate while affording a seamless indoor/outdoor living experience. A floating roof blends into the land & mountains behind. The Grand Lanai with its 17' cedar ceiling overlooks the majestic 45' infinity saline pool, tiled in royal-blue

iridescent glass. A massive 8'x9' elegant white-quartzite waterfall center-island, along with Snaidero white-glass, teak & stainless steel cabinets, grace the kitchen. There are Graff, Axor, Viegner & elegant Grohe fixtures throughout. The light-filled, master & two guest bedroom suites are situated at the opposite ends of the home. The 1,500 bottle glass-fronted wine cellar is state-of-the art. This smart-home offers remote control functionality along with 66 solar panels. Golfers take note of the artificial-turf green with three tee boxes around the property! www.MakilaModern.info



Robert H. 'Robbie' Dein

Broker-Owner, ABR, CRS, RSPS | RB-18398
Maui Real Estate Advisors, LLC
Direct: 808.250.3564
Robbie@MauiRealEstateAdvisors.com



Maui's Only Realtor Recognized as a 'Top 100 State of Hawaii Realtor' Among 15,000 + Hawaii Realtors (for 14 Consecutive Years),
Top 100 Hawaii Realtors Hall of Fame, Hawaii Business Journal 2006-2019

Kenneth M. 'Ken' Hayo

Principal Broker-Owner | RB-15529
Maui Real Estate Advisors, LLC
Direct: 808.283.8435
Ken@MauiRealEstateAdvisors.com





\$8,800,000

LIFE ON LANAI
AT HULOPOE BAY

Hulopoe Bay, Lanai | 4,951 SQFT
1.2 AC | 4BR/4.5BA | MLS# 387833
\$8,800,000

This alluring Estate is perched above Hulopoe Bay and Sweetheart Rock, Puu Pehe. A safe, sustainable sanctuary that feels a world away but is still in the US on the Covid-19 free island of Lanai. With commanding views of Hulopoe Bay, this serene gated estate features a carbon neutral home, mature landscaping and automated pool system. The private residence welcomes you with dramatic views of Maui and Kahoolawe from a living room with disappearing glass walls for the best of indoor-outdoor living. A master suite with private deck, walk-in closet with laundry, and large bath are the epitome of the tropical luxury. Dining and Resort amenities are available at the nearby Four Seasons Resort Lanai. A 40' fishing boat with slip at the Manele Harbor can also be included.



Mary Anne Fitch
R(B)-15747
Hawaii Life Real Estate Brokers
Direct: 808.250.1583
Email: sold@maui.net
Web: soldmaui.com



Nam L. Le Viet
R(S)-61810
Hawaii Life Real Estate Brokers
Direct: 808.283.9007
Email: nam@mauisold.com
Web: mauisold.com



\$8,250,000



218 PLANTATION CLUB DR

Kapalua, Maui | 7,267 SQFT | 2.19 AC
5BR/5.5BA | MLS# 388247 | \$8,250,000

Experience the majestic year-round sunset, ocean and island views of this magnificent home. This incredible residence sits on 2.19 acres of prime real estate perched above the 18th fairway over the renowned Plantation Golf Course at Kapalua. These gorgeous views can be enjoyed from every room and overlooks five fairways to the ocean. Offering over 7,200 square feet of the luxurious living space with five bedrooms and five and half bathrooms, it also features a glass fronted wine cellar, gourmet kitchen, exquisite dining room, and media room with sound system, including bar. www.MauiHomeSales.com/218Plantation



For all the Maui listings check out my website:
www.MauiHomeSales.com
Including Interactive Maps of Kaanapali, Kapalua and Wailea

Robert R. Myers
REALTOR (S), SRS
Tel: 808.283.3067
Robert@MauiHomeSales.com
www.MauiHomeSales.com





GET LUXURY HOME MAGAZINE *Delivered* TO YOUR DOOR

An annual subscription
is just a click away.

SUBSCRIBE 
[pacificluxuryliving.com/subscribe](https://www.pacificluxuryliving.com/subscribe)



SKY RESIDENCE AT PARK LANE ALA MOANA

Honolulu, Oahu | 3,058 SQFT | 3BR/3.5BA
MLS# 202028244 | \$7,888,000

With direct ocean views, incredible mountain views and fronting Ala Moana Beach Park, Park Lane #7705 represent a single-family home experience in the sky. The quintessential “U-shape” design of the Sky Residences envelops a deep covered lanai, making the outdoor space a true extension of the home. This home includes upgrades including window coverings, luxury designer paint, designer closet systems and cabinetry, 2 parking stalls and a large storage room. Park Lane is a visionary project developed by the MacNaughton Group & Kobayashi Group on the ocean side of Ala Moana Center in Honolulu.



Noel Pietsch Shaw
MBA, S. Realtor-Associate, RS-75888
HAWAI'I LIFE
EXCLUSIVE MEMBER OF
FORBES GLOBAL PROPERTIES
808.221.8889
noelshaw@hawaiiilife.com



\$7,850,000



525 HANA HWY

Paia, Maui | 3,600 SQFT | 15,028 SQFT Land | 6BR/4BA | MLS# 388588 | \$7,850,000

Incredible North shore oceanfront retreat. Four Structures on a 15,000sf lot, three homes, and a three-car garage with laundry and an office. Perched off Hana Hwy. between Paia and Kuau, just in front of Tavares Bay's wave, the perfect "right, sits a charming oceanfront and poolside haven. Three

homes, separately, privately, and masterfully appointed all with their own beautiful ocean views. Once inside a Mediterranean charm unfolds of natural architecture, high roof lines, coral accents walls, yellow Venetian plaster textured walls, and the striking royal blue pool.



COLDWELL BANKER

ISLAND PROPERTIES



Rhonda Smith Sanchez

RB-22953

Maui's North Shore Specialist

808.205.2175

Rhonda@RhondaMaui.com

Rhondamaui.com



YOUR SANCTUARY ON THE KONA COAST



HOME HAPPENS HERE.

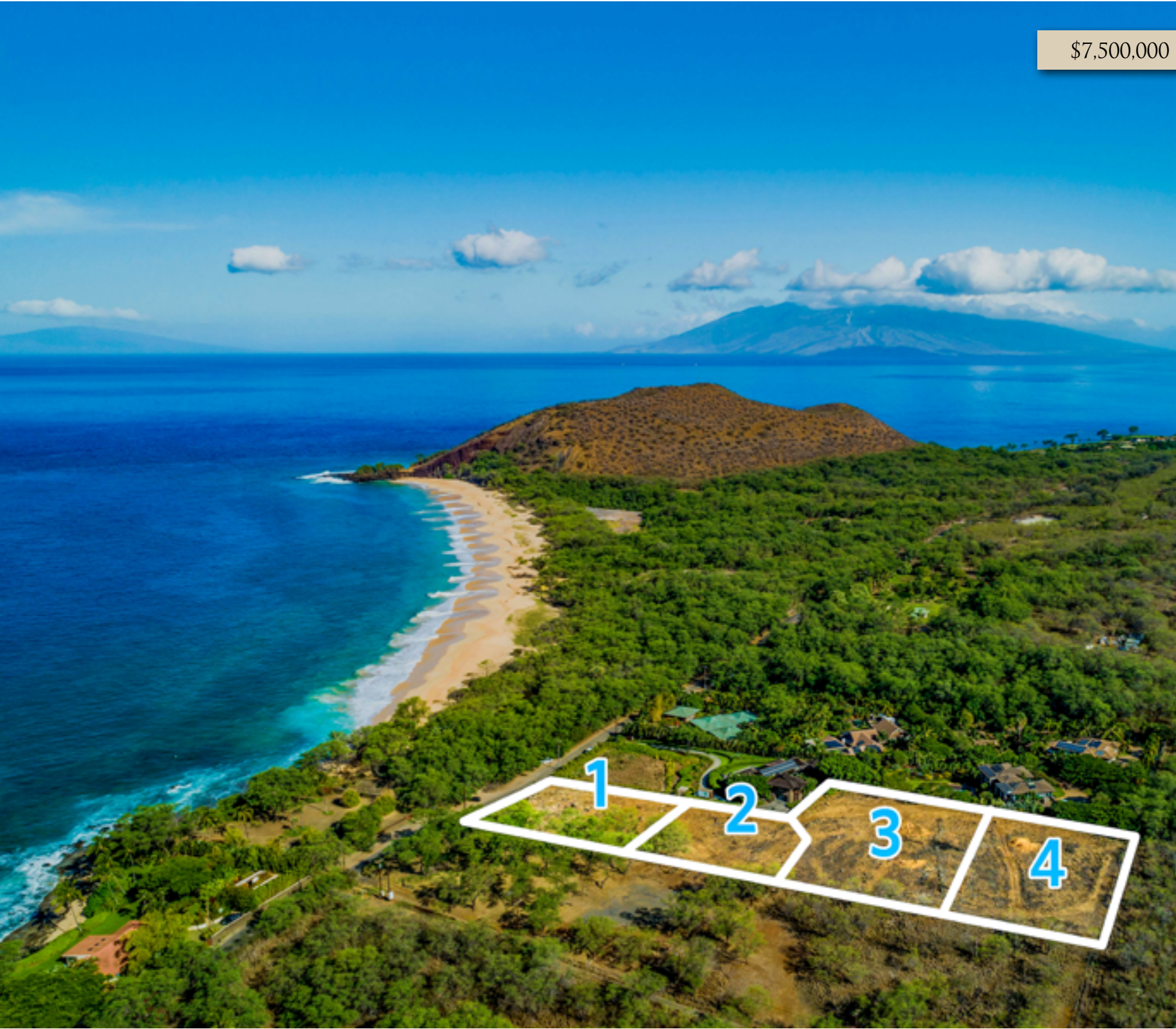
Nestled on the idyllic Kona coastline of the Big Island of Hawai'i, the exclusive community of Kohanaiki features a 67,000-square-foot private clubhouse & spa, 18-hole Rees Jones golf course, adventure team, beach club, organic community farm and exquisite dining, all within 450 acres of oceanfront luxury estates. Homes designed by renowned architects like Shay Zak, Khoi Le and Jim McLaughlin are inspired by the rugged landscape of ancient lava flows, panoramic ocean views, and the ever-present Kona sunshine. Discover your new sanctuary at Kohanaiki. **From \$2.8 Million.**

Access to and use of the golf course and other private amenities at Kohanaiki Club is available only to members of the Kohanaiki Club and are subject to the payment of additional fees. Membership to the Kohanaiki Club is by invitation only and is not included with a purchase of a property. No representation or warranty is made regarding whether a purchaser will qualify for such membership. Obtain the Property Report or its equivalent required by Federal and State law and read it before signing anything. No federal or state agency has judged the merits or value, if any, of the property shown in this brochure. WARNING: THE CALIFORNIA DEPARTMENT OF REAL ESTATE HAS NOT INSPECTED, EXAMINED, OR QUALIFIED THIS OFFERING. Kohanaiki Realty LLC, 73-2055 Ala Kohanaiki, Kailua-Kona, HI 96740.



Call for your private tour
(888) 406-1256 | kohanaiki.com/kona

\$7,500,000



BIG BEACH ESTATES

Makena, Maui | 2.79 AC | \$7,500,000

Located on one of the most exclusive and beautiful coastlines in the world, South Maui's Big Beach Estates offer amazing views and that remote island experience with all of the conveniences of being in town just minutes away. Purchase this property as a 2.79 acre private estate or for its development potential. This is one of the last available parcels in Makena and offers a multitude of development options. The four lots are also available separately at this time, subject to final subdivision approval: Lot 1 \$2.2M, Lot 2 \$2.6M, Lot 3 \$2.8M, and Lot 4 \$3.2M.

www.bigbeachestatesmaui.com



David W. Richardson
REALTOR(B), RB-10780
808.870.9916 | Dave@HawaiiLife.com
www.MauiOceanfront.com
HL-1 Director | "Top 2 agent on Maui 2018"



HAWAI'I LIFE

Forbes
GLOBAL PROPERTIES

Josh Jerman
REALTOR(B), RB-19728
808.283.2222 | Josh@HawaiiLife.com
www.josh.hawaiiilife.com





\$6,495,000



476 LAULEA PL

Spreckelsville, Maui | 2,058 SQFT | 1.25 AC | 6BR/3BA | MLS# 389153 | \$6,495,000

1476 Laulea Place is a beach lifestyle legacy location that offers, oceanfront rejuvenation, barefoot sandy beaches with beautiful ocean breezes. The two structures have been mindfully designed to sit smartly with the tradewinds at your back while welcoming endless ocean views. Each private living quarters is outlined with wrap-around lanais, making space and comfort for watching

all the watersports and plenty of room for quiet coffee breaks. The main house has amazing ocean views, four bedrooms, and two baths, the cottage has tremendous ocean views and is a two-bedroom one bath beach cottage. Use this most enjoyable property as a residence or continue to use it as a Bed and Breakfast.



COLDWELL BANKER

ISLAND PROPERTIES



Rhonda Smith Sanchez

RB-22953

Maui's North Shore Specialist

808.205.2175

Rhonda@RhondaMaui.com

Rhondamaui.com





CONTACT NICOLE VINCENT
808 895 5455
Info@LivePaniau.com
LivePaniau.com

Dream location. *Dream home.*

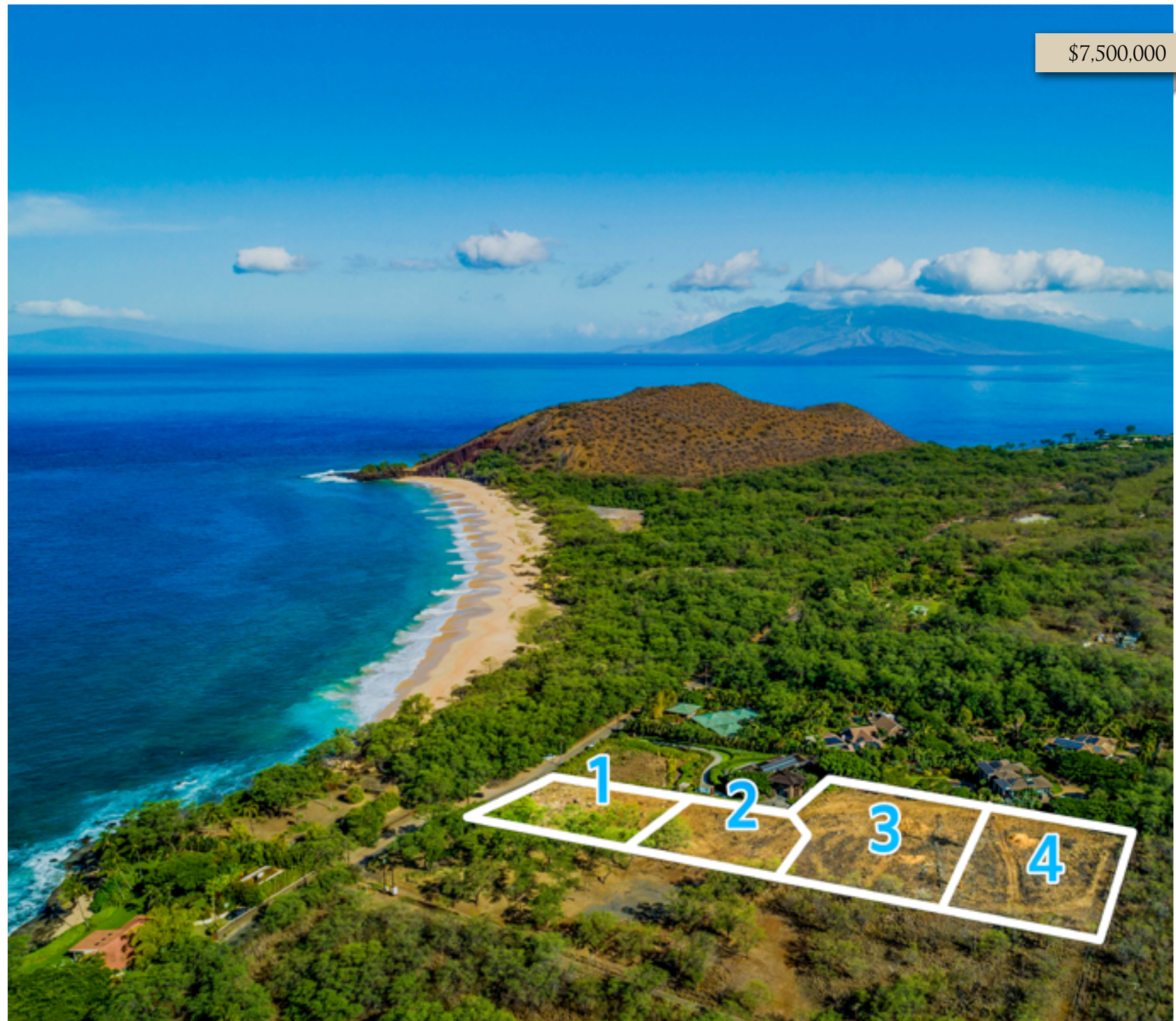
Paniau is an exceptionally rare opportunity to own buildable land on the Kohala Coast on Hawai'i Island. This oceanfront enclave features eight spacious homesites that allow owners to create the custom island residence of their dreams. These enviable lots feature panoramic views, lush grounds with historic anchialine ponds and a location that puts dining, shopping, golf and the Kona airport within easy reach. *Discover Paniau today.*

FEATURED HOMESITES

LOT 1	\$3,250,000	LOT 8	\$2,900,000
	Lot size: 21,883 sq. ft.		Lot size: 30,391 sq. ft.
	Ocean Frontage: 69 sq. ft.		Ocean Frontage: 95 sq. ft.
	Buildable Area: 12,983 sq. ft.		Buildable Area: 14,956 sq. ft.



© 2021 Nani Paniau Development Partners LP. This is not an offer to sell, nor a solicitation of an offer to buy, to residents of any state or province in which restrictions and other legal requirements have not been fulfilled. VOID WHERE PROHIBITED BY LAW. The information provided herein is solely for informational purposes, and is subject to change without notice. No representation, warranty or guarantee is made as to any information contained herein. All features, services, amenities, descriptions and other information are subject to change at any time without notice. Compass Real Estate. License number RB-20189



BIG BEACH ESTATES

Makena, Maui | 2.79 AC | \$7,500,000

Located on one of the most exclusive and beautiful coastlines in the world, South Maui's Big Beach Estates offer amazing views and that remote island experience with all of the conveniences of being in town just minutes away. Purchase this property as a 2.79 acre private estate or for its development potential. This is one of the last available parcels in Makena and offers a multitude of development options. The four lots are also available separately at this time, subject to final subdivision approval: Lot 1 \$2.2M, Lot 2 \$2.6M, Lot 3 \$2.8M, and Lot 4 \$3.2M.

www.bigbeachestatesmaui.com



David W. Richardson
REALTOR(B), RB-10780
808.870.9916 | Dave@HawaiiLife.com
www.MauiOceanfront.com
HL-1 Director | "Top 2 agent on Maui 2018"



HAWAI'I LIFE

Forbes
GLOBAL PROPERTIES

Josh Jerman
REALTOR(B), RB-19728
808.283.2222 | Josh@HawaiiLife.com
www.josh.hawaiilife.com





\$5,900,000



\$5,500,000



KE KAILANI IN MAUNA LANI RESORT

Kohala Coast, Big Island | 4,758 SQ FT
4 Bed 4 1/2 Bath | MLS 646252 | \$5,900,000

Almost Oceanfront with Dramatic Unstoppable Views - A Modern Hawaiian Style Home with stunning architecture and craftsmanship - featuring handcrafted Sapele Mahogany and luxurious finishes. Positioned on the 6th hole of Mauna Lani South Course with close proximity to the ocean with dramatic ocean, golf course and mountain views.



DIAMOND HEAD VILLA

Diamond Head, Oahu | 3,433 SQFT | 4BR/4BA
MLS# 202020970 | \$5,500,000

Timeless details reflect the principles of classic architecture: strength, utility, and beauty. Situated in an exclusive neighborhood, the two-story villa is located on the east facing slope of Diamond Head with a picture-perfect 158' elevation from the turquoise waters below. The spacious 4bd/4ba floor-plan boasts high ceilings, new designer kitchen, formal dining room, generous living areas, and trademark indoor/outdoor spaces for the entire family. Other features include a wet bar/family room area that connects to the courtyard/BBQ and swimming pool. Freshly remodeled with custom cabinetry and new wood flooring. Find a rare mix of a tranquil, private setting on a desirable cul-de-sac.



Ahmad Mohammadi
Principal Broker RB-21131
Hawaii Luxury Real Estate
ahmadtmo@gmail.com
808-640-1994



Genevieve Firestone
Realtor Salesperson, RS-70043
Hawaii Luxury Real Estate
genevievefirestone@gmail.com
808.896.4842



Vicki Hossellman
RA|RS-38718
Luxury Property Specialist
808.351.3833
Vickih@cbpacific.com
www.Vickihossellman.com



\$4,500,000



KAPALUA IRONWOODS 44

Kapalua, Maui | 2,082 SQFT | 2BR/3BA
MLS# 389979 | \$4,500,000

Kapalua Ironwoods #44, a well-appointed oceanfront condo perched above Oneloa Bay with breath taking views of the beach, Kapalua Bay golf course, Molokai, sunsets over Lanai, as well as sweeping views of the Kapalua Coast. Ironwoods #44 has arguably the best views in this gated community. This unit boasts an open concept floor plan with ocean front views from the living, dining, and kitchen areas, as well as ocean views from the master bedroom. Two bedrooms with full en-suite bathrooms and a third full bathroom off the living area allows for comfort and privacy. The loft area provides a quiet workspace with additional storage. One car garage.

Photographer Michael Fish Photography



Laurie S. Lowson
REALTOR (RB-16475)
ABR, CRB, CRS, ePRO, RSPS, SFR
Lowson & Associates
(808) 276-8001
Laurie@Lowson.com
www.Lowson.com



CELEBRATING 50 YEARS ON WEST MAUI 1970-2020

\$4,395,000



223 PLANTATION CLUB DR


Lahaina, Maui | 5,366 SQFT | 2.19 AC
3BR/3.5BA | MLS# 389036 | \$4,395,000

This comfortable, single-story 3 Bed/3.5 Bath luxurious residence features Grand Rooms, an Open Plan kitchen, a large private Master Suite with indulgent Bathroom and Walk-in Closets, a private well-appointed office, Wine room, Bar, Pantry, high ceilings, Lutron Lighting system, approximately 60 feet free form Pool, Koi Pond, Private entry with Porte-Cochere and 3 Car Garage. With 9,348 sq. ft under roof, this is an especially livable family home great for entertaining inside or out while providing several private areas to relax.
www.MauiHomeSales.com/223PlantationClubDr



For all the Maui listings check out my website:
www.MauiHomeSales.com
Including Interactive Maps of Kaanapali, Kapalua and Wailea

Robert R. Myers
REALTOR (S), SRS
Tel: 808.283.3067
Robert@MauiHomeSales.com
www.MauiHomeSales.com





\$3,995,000



PENDING



49 BLACK SANDS BEACH

Mauna Lani Resort, Big Island | 4,218 SQFT
4BR | MLS# 640094 | \$3,995,000

Centrally located in the luxurious Mauna Lani Resort. The gated community of 49 Black Sands beach is just a few steps from the Black Sand Beach clubhouse with its spa, pool, kayak storage, gathering pavilion, fitness room, tennis court and the black sand beach. Enough room for the whole family to snuggle yet have alone space. 4 Bedrooms, 4,218 Sq.Ft. Great set up for multi-generational family living. Separate in-law or guest suite. Mountain, golf course and ocean views. Be sure to tour this home in 3D Link: <http://bit.ly/49BSB20a>



HOOLEI A3

Wailea-Makena, Maui | 2,619 SQFT
3BR/3.5BA | MLS# 387982 | \$3,750,000

A Rare & Special Opportunity to Own the Very Best – a top row Bldg A - Plumeria plan seldom becomes available. Being up front and center in your own corner of the world just doesn't get any better! The unparalleled views & privacy are simply spectacular with panoramic views of Molokini, Kaho'olawe, Lanai & West Maui Mountains. This spacious townhouse style condo lives like a residence. Furnishings and appointments designed by Bassman Blain Home give this villa an inviting atmosphere. All 3 bedrooms feature an en suite bath providing privacy within this luxurious villa. www.hoolei-maui.com



Eileen Lacerte
REALTOR® Broker/Owner
808.989.1862
eileen@betterislandlifestyle.com



Diane K. Pool
R(B)-17896, ABR, CRS
808.276.2004
diane@SoldOnMaui.net
www.SoldOnMaui.net





live who you are

Corcoran Pacific has your home in Hawaii.

Locally owned and operated since 2005.
A tradition of excellence and impeccable service.

corcoran
PACIFIC PROPERTIES

KAUAI | OAHU | MAUI | HAWAII ISLAND | CORCORANPACIFIC.COM

©2020 Corcoran Group LLC. All rights reserved. Corcoran® and the Corcoran Logo are registered service marks owned by Corcoran Group LLC. Corcoran Group LLC fully supports the principles of the Fair Housing Act and the Equal Opportunity Act. Each Office is independently owned and operated.



MAJESTIC KALAPAKI BAY ON KAUAI

Lihue, Kauai | 2,516 SQFT
3BD/3.5BA | MLS #644240
\$3,500,000

3251-A Kalapaki Circle
Majestic and highly acclaimed, this prized vacation rental residence along Kalapaki Bay in Lihue, Kauai offers world class views and high-end luxury living. With a grandeur all its own, the 3.5 story masterpiece provides vast views of Kauai's splendor, showcasing the white sand bay, beach, sailboats, surfers and a prized island lifestyle. Enjoy your windows-on-the-world seat from this 3 suite / 3.5 bath home with over 2,500 square feet of interior living and fully covered lanai spaces.

FEATURES:

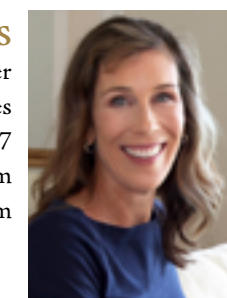
- 2,516 sf air-conditioned interior
- Vacation rental zoning
- Garage

corcoran
PACIFIC PROPERTIES

SIROIS
KAUAI



Hannah Sirois
R(B), Partner
Corcoran Pacific Properties
808.639.2367
Hannah@KauaiHP.com
SiroisKauai.com



\$3,199,000



ONE ALA MOANA
PH #2200

Ala Moana, Oahu | 2,651 SQFT | 3BR/3BA
MLS# 202025153 | \$3,199,000

This luxurious penthouse offers breathtaking ocean and mountain views from an expansive, open floor plan with 10-ft high ceilings. This 3-bed, 3-bath home features his/hers walk-in closets, a large wine chiller, convection and steam ovens, laundry room with a separate service entrance, and 2 parking spots. This property truly feels like a single-family home. Enjoy the resort-like amenities such as a rooftop terrace, golf room, spa treatment, theater room, gym, infinity-pool and hot tub, several barbecue areas, jogging paths, and more. ONE Ala Moana is conveniently located above Ala Moana Center and just minutes away from restaurants, entertainment, and Ala Moana Beach Park.



Esther H. Park
REALTOR®, Senior Vice President
ABR CHMS CRS GRI SRS, RB-21002
808.489.6733
esther.park@sothebysrealty.com
한국어 서비스 가능



List

Sotheby's
INTERNATIONAL REALTY



\$2,699,000



GRAND
EQUESTRIAN ESTATE

Waimea, Big Island | 8,693 SQFT
20.01 AC | 6BR/6.01BA
MLS# 644493 | \$2,699,000

This Grand Equestrian Estate at Waikii Ranch offers the space to Live, Roam and Play. Waikii Ranch is the only equestrian community in the State of Hawaii! It has gated access, an owners clubhouse, exercise room, tennis courts, polo fields and equestrian trails throughout. Waimea (Kamuela) town and its' award winning schools, Queens' affiliated hospital, shopping, restaurants and churches are only a 15 minute drive away.



corcoran
PACIFIC PROPERTIES



JENNIFER RICE
— HAWAII BIG ISLAND REALTOR —



For Big Island of Hawaii Listings Visit:
www.KonaLuxHomes.com

Jennifer Rice

Realtor (S)
808.333.6977
Jennifer@KonaLuxHomes.com
www.KonaLuxHomes.com





\$2,500,000

ESSENCE OF HAWAII LUXURY

Puakea Bay Ranch, Hawaii Island
5,688 SQFT | 10.8 AC | 5BR/4+BA
MLS# 645666 | \$2,500,000

Grand Hawaiian Estate magnificently situated in a resort-style setting on 10.8 acres in a private Gate-Guarded Community. Drive into the large park-like setting with manicured lawns and well-established drought-resistant plants and trees. The home faces due west with expansive views of the Pacific, Maui and occasionally Lanai and Kahoolawe. This is the highest elevation on the ranch creating a spectacular vista with unobstructed views. Three Bedroom, 3 and a half bath main house with spectacular views from every room. A spacious great room with 30' ceiling, a lava rock wall that frames the wet-bar, a lava rock fireplace and hardwood floors. The perfect place for family gatherings, entertaining and relaxing.



LesLee A. Delany
REALTOR® RS-75342
Better Homes and Gardens Real Estate | Island Lifestyle
808.882.7387
C: 949.632.7232
LesLee@betterislandlifestyle.com



\$2,395,000



KA MILO 327 LOCATED 8TH FAIRWAY

Kohala Coast, Big Island | 2,174 SQ FT
Beds: 3 Baths: 3 | MLS 646113 | \$2,395,000

Mauna Lani North Golf Course with spectacular views of the Kohala Mountains and golf course greens. Deluxe detached home has abundant space for entertainment. Sold turn key, with top of the line furnishing.



Genevieve Firestone
Realtor Salesperson, RS-70043
Hawaii Luxury Real Estate
genevievefirestone@gmail.com
808.896.4842



Ahmad Mohammadi
Principal Broker RB-21131
Hawaii Luxury Real Estate
ahmadtmo@gmail.com
808-640-1994





\$2,375,000

75-1213 KEOPU MAUKA DR

Holualoa, Big Island | 5,081 SQFT | 5.00 AC | 5BR/4.5BA | MLS# 644279 | \$2,375,000

Incredible Holualoa Estate in Keopu on the Big Island of Hawaii! An architecturally stunning estate that has been revitalized offers you unblocked coastline, sunset and mountain views. Overlooking Kailua Bay, this delight has multiple family, entertaining and work areas with covered and open lanai space, highlighted all by privacy and tranquility. Adjacent to the Honua'ulu Forest

Reserve will surely encourage the relaxed island lifestyle. On five acres of fenced land that include two separate pastures along with a riding arena, the opportunities for you to enjoy the equestrian lifestyle are here. White pineapple, variety of citrus, apple banana, papaya and avocado are a few of the wonderful island fruits currently being cultivated. Come home to the Holualoa Estate you've been waiting for!



Marco A. Silva
REALTOR®, Broker, RB-20599
808.557.8921 | Marco@KonaLuxuryRealEstate.com
KonaLuxuryRealEstate.com
Certified Luxury Home Marketing Specialist®
Certified Residential Specialist | Certified Negotiation Expert
2019 Top PERFORMER® Hawaii Business Magazine
2017 Top 100 REALTOR® Hawaii Business Magazine
2016 Top 100 REALTOR® Hawaii Business Magazine



A New Era in Luxury

The luxury Division at Compass
represents the nation's
most remarkable properties.

Experience more of what the Luxury Division
has to offer

LUXURYATCOMPASS.COM



Represented by Dennis Rush | REALTOR® Broker. DENNIS RUSH IS A REAL ESTATE LICENSEE AFFILIATED WITH COMPASS, A LICENSED REAL ESTATE BROKER AND ABIDES BY EQUAL HOUSING OPPORTUNITY LAWS.

COMPASS

Big Island



\$2,299,000



KEALAKEKUA LUXURY COMPOUND

Captain Cook, Hawaii Island
3,164 SSFT | 5.14 AC | 4 BD/4.5 BA
MLS #645626 | \$2,299,000

Steeped in rich Hawaiian history and surrounded by boundless beauty, this off-grid luxury compound presents a generational opportunity to own on Kealakekua's coveted, Makahiki Lane. A feast for the senses! Live green and free in this 3 pod property from the verdant fruit orchards and energy independence via the owned PV system. The 180 degree ocean view encompass a sweeping coastline vantage of the beloved bays of South Kona. During the day bask in the warm sunshine, cool off in the pool and indulge in the gorgeous sunsets at dusk. At night the cool mauka air envelopes the hillside and the home glows golden against the dark blue sky as you hear the rolling waves below at Kealakekua Bay.



Minoo Elison

Principal Broker/Owner
RB-21345

minoo@connecthawaiiinow.com

www.connecthawaiiinow.com

IG: @minoo.connecthawaii

Direct: 808.255.8757



LuxuryHomeMagazine.com



\$1,950,000

EXCEPTIONAL LUXURY AT WAIEA

Honolulu, Oahu | 1,208 SQFT | 1BR/2BA | MLS# 202024339 | \$1,950,000

Representing the pinnacle of high-end living on Ala Moana Boulevard, Unit 1203 in Waiea is an exceptional find! The 10-foot ceiling of this one bedroom, two bathroom residence easily invites in fabulous views of the Pacific Ocean and Kewalo Harbor. The Master bedroom has lanai access and a walk-in closet, while the master bathroom features a luxurious freestanding tub. The beautifully appointed kitchen will inspire the chef in

you, while the lanai allows you to step out and enjoy the cool ocean breeze. Lounge in a poolside cabana by the infinity-edged ocean-view pool and hot tub, or dine outside at the resident barbeque pavilion. Amenities include a state-of-the-art fitness center, luxurious spa, library, theater, ocean view bar and full-time resident specialists.

JACK TYRRELL
& COMPANY

John “Jack” and May Tyrrell

Lic. # RB-19880 & RS-75745

Jack@jtchawaii.com

May@jtchawaii.com

808.306.6933





\$1,898,000



KALELE KAI TOWNHOUSE

Hawaii Kai, Oahu | 2,222 SQFT
3BR/2.5BA | MLS# 202020581 | \$1,898,000

This townhouse offers the best of both worlds: the benefits of a single-family home combined with the amenities, security and ease of ownership of a condominium! Treat yourself to gorgeous waterfront marina views as well as the access to marina activities. Exquisitely renovated from top to bottom, you'll love the gourmet kitchen with Sub-Zero and Miele appliances, Downsview cabinets and quartz countertops. The private master suite encompasses the marina front bedroom, lanai, sitting area loft and an elegant bathroom complete with washer/dryer. You'll enjoy amenities including a swimming pool with whirlpool spa and Clubhouse with facilities to entertain, including a kitchen and barbecues.



Jeffrey M. Fox
(R) CLHMS, CRB, CRS
Corcoran Pacific Properties
RB-17230
808.292.5333
Jeffrey.Fox@corcoranpacific.com



\$1,750,000



WAIKAUMALO-MAULUA HOMESTEADS

Ninole, Hawaii Island | 2,468 SQFT | 2.45 AC
2BR/2.5BA | MLS# 646501 | \$1,750,000

Sitting above a beautiful cove, this architecturally designed home is the ultimate in seclusion and privacy and was created to perfectly blend into the Hawaii lifestyle using materials that will endure the test of time in a timeless, clean style. Unique and high value materials were used to showcase the Southeast Asian architectural mood while being durable in the tropical climate and strong sun of Hawaii Island. The main house has a guest suite with private entrance, Chef's Kitchen, dining room, living room/lanai, studio/small bedroom, and office. The second building is connected to the main house by a colonnade/breezeway, consisting of a master bedroom/lanai, large bathroom, closet, office, and laundry room.

Donna Duryea
R(S) 62459, CRS, GRI, ABR
808.987.4511
donna@theduryeagroup.com
www.theduryeagroup.com





\$1,698,000



6278 UPOLO PL

Honolulu, Oahu | 3,725 SQFT | 4BR/4BA
MLS# 202100660 | \$1,698,000

Artfully designed, this inspiring home offers separate areas for comfortable living, remote work, study, play, workout and relaxation. Chic and unique, soaring high ceilings allow ample natural light and create an open feeling. The innovative glass 'garage' style doors in the kitchen and master bedroom open to a tranquil pool and spa, creating seamless indoor/outdoor living spaces. Additional features include stainless kitchen appliances, a mix of concrete, wood, and tile floors downstairs, carpeted areas upstairs. Open rooftop deck is perfect for outdoor workouts, family entertaining, or just gazing at the stars. <https://player.vimeo.com/video/499556693>



Mavis KL Nellas
Corcoran Pacific Properties
Realtor-Associate
808.497.0825



\$1,650,000



72-1165 HOOPAI RD

Kailua Kona, Big Island | 2,944 SQFT
3.14 AC | 3BR/2.5BA | MLS# 646091
\$1,650,000

Come home to your luxury Coffee Farm Estate and this turn-key furnished home featuring incomparable Ocean views. Endless sunsets captivate from 3.14 acres of tropical landscaping in the highly coveted North Kona gated community of Makalei Estates. This gracious custom home designed by Paul Bleck, AIA, was designed for privacy and embodies the essence of the quintessential Hawaiian home. Beautiful architectural elements abound with incredible soaring ceilings and an open floor plan flowing to the expansive lanai, pool, and spa. Get away from it all yet just minutes from the center of downtown Kailua-Kona and the airport. This gorgeous Hawaiian home is well planned with plenty of room for visitors and family, entertaining, and luxury living at its finest.



Karen Ferrara, MBA
REALTOR, RS-72752
808.883.0094
karen@karen.ferrara.com
www.karen-ferrara.com



\$1,649,500



MAUNA LANI POINT
H-102

Kohala Coast, Hawaii |1589 SQFT |
2BR/2.5BA | MLS# 645052 | \$1,649,500

Newly renovated ground floor ocean view unit overlooking the Mauna Lani South Golf Course. Brand new tile flooring, master walk-in shower, kitchen cabinets with thick quartz counter-tops, and piping and plumbing throughout,, Enlarged lanai space with an open green lawn giving the condo a great sense of space perfect for indoor/outdoor living. Complex amenity center with pool, spa, and BBQ's. Mauna Lani Resort residents and their guests enjoy close proximity to shopping, restaurants, gourmet grocer, two golf courses, private Beach Club access, fitness center and spa with large lap pool and tennis courts. Create new memories, work from home, and enjoy endless magical sunsets.



Renée H. Kraft
REALTOR® RB-23004
Better Homes and Gardens Real Estate | Island Lifestyle
808.345.2108
renee@searchhawaiiproperty.com
www.SearchHawaiiProperty.com



IN ESCROW



78-104 HOLUA KAI
STREET

Kailua-Kona, Big Island | 2,685 SQFT
6,184 SQFT Land | 4BR/3BA | MLS#643474
\$1,540,000

Resort-style living awaits you at beautiful Holua Kai. On Keauhou Kona golf course (also known as Kona Country Club) with peaceful views, private pool and spa, plus 3 lanais. 2 bedrooms on each level; the design is well-thought-out, so everyone has their own privacy. Refined superb construction in a gated community with zoning to allow vacation rentals. 2 car garage, central AC, quality appliances, pocket doors, and fine woods. Convenient to everything: beach, shopping, restaurants, and located in the historic Crown Lands Of Keauhou. Oceanfront community has an ocean viewing Hale and Recreation Center with pool and BBQ. This is the opportunity that you've been waiting for; come see it today!

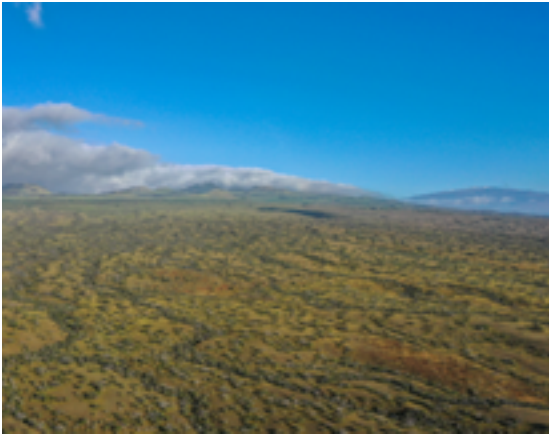
Sharly Ward

RB12705, ABR, CRS, GRI
ACCREDITED STAGING PROFESSIONAL MASTER
808.938.9533
2012 and 2015 Best of West Hawaii Today, Best Real Estate Agent
2009 Lifetime Achievement Hall of Fame





\$1,395,000



BUILD YOUR DREAM

Kohala, Hawaii Island | 32.78 AC | MLS #645241
\$1,395,000

Sweeping coastlines, gentle rolling hills and expansive sunsets await from your private 32.78 acre estate. More than an escape, ownership here is the rare opportunity to dream and build. Just 10 minutes away from Kawaihae, located in the exclusive off-grid luxury community of Puaiki-Kaiholena. With only 12 lots and gated access, Kaiholena is known for its ultimate privacy and unobstructed Kohala Mountain views. Enjoy easy access to the best beaches, resorts and regional cuisine on Hawaii Island. Come experience the best of both worlds, town and country on the Kohala coast.



Minoo Elison
Principal Broker/Owner
RB-21345
minoo@connecthawaiiinow.com
www.connecthawaiiinow.com
IG: @minoo.connecthawaii
Direct: 808.255.8757



\$1,300,000



180 DEGREE
SPECTACULAR
OCEAN VIEW

4.75 AC | MLS# 633546 | \$1,300,000

Rare acreage on the South Side of Kauai. 4.75 acres of manicured land with spectacular ocean views overlooking the Poipu shoreline and the forbidden Island of Niihau. Minutes to beautiful beaches, first class golf, fine dining and airport, yet you are above the fray at 1,100 ft elevation looking only at tropical vegetation, blue sky and ocean. Driveway is paved, water and electricity to the lot. You are ready to build your dream home on Kauai. Wake up to the sun rising in the east over the ocean and end your day with a setting sun over Niihau on the west side. This is a uniquely beautiful property that must be seen to be truly appreciated.



Invest In Your Dreams

F. Lee Morey
PB, Lic.# 15886
F. Lee Morey, BROKER/REALTOR®
2-2514 Kaumalii Hwy, Ste. 216
Kalaheo, HI 96741
808.651.6720
fleemorey@gmail.com
www.fleemoreybroker.com



KAPALUA

UNCOMPROMISED BEAUTY



LENA M. TABERNA

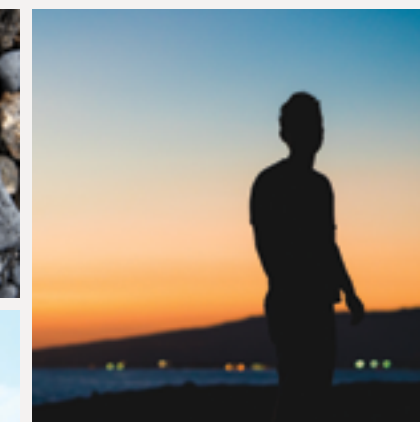
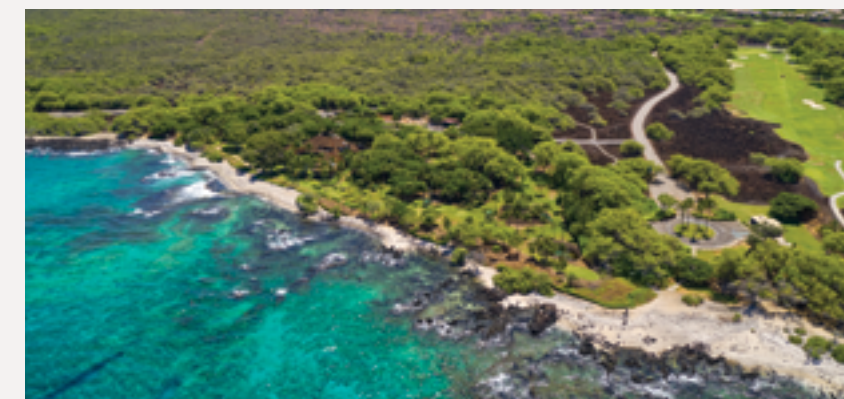
RS-73734, Realtor (S)
Direct: (808) 281-4240
Email: Lena@LenaTaberna.com
www.LenaTaberna.com
Coldwell Banker Island Properties



Whether you are considering buying or selling a Maui home, allow me to represent you and your real estate transactions.

As someone that has called Maui home for over fifty years, you can expect superior service with the spirit of Aloha

Lena M. Taberna



CONTACT NICOLE VINCENT

808 895 5455

Info@LivePaniau.com

LivePaniau.com

Dream location. *Dream home.*

Paniau is an exceptionally rare opportunity to own buildable land on the Kohala Coast on Hawai'i Island. This oceanfront enclave features eight spacious homesites that allow owners to create the custom island residence of their dreams. These enviable lots feature panoramic views, lush grounds with historic anchialine ponds and a location that puts dining, shopping, golf and the Kona airport within easy reach. *Discover Paniau today.*

FEATURED HOMESITES

LOT
1
\$3,250,000
Lot size: 21,883 sq. ft.
Ocean Frontage: 69 sq. ft.
Buildable Area: 12,983 sq. ft.

LOT
8
\$2,900,000
Lot size: 30,391 sq. ft.
Ocean Frontage: 95 sq. ft.
Buildable Area: 14,956 sq. ft.



© 2021 Nani Paniau Development Partners LP. This is not an offer to sell, nor a solicitation of an offer to buy, to residents of any state or province in which restrictions and other legal requirements have not been fulfilled. VOID WHERE PROHIBITED BY LAW. The information provided herein is solely for informational purposes, and is subject to change without notice. No representation, warranty or guarantee is made as to any information contained herein. All features, services, amenities, descriptions and other information are subject to change at any time without notice. Compass Real Estate. License number RB-20189

now touring

HAWAII'S MOST SPECTACULAR BEACHFRONT RESIDENCES

Awaken to the sound of the waves, right on the Big Island's best beach, at the legendary Mauna Kea Resort. Residences are supremely private, exquisitely appointed and graced by lavish resort amenities. These are the last and most rare absolute beachfront residences in all of Hawaii. From \$1.8M to \$9M.

First owners moving in | 40% Sold



Hapuna Beach Residences

AT MAUNA KEA RESORT

808.557.8689 Info@MaunaKeaLiving.com MaunaKeaLiving.com

When not in residence, properties may be placed in the resort rental program.



\$8,475,000

PUAKO'S
PREMIER LUXURY
BEACHFRONT HOME

**Puako, Big Island | 4,416 SQFT
16,285 SQFT Land | 4BR/5+2HLF BA
MLS# 640347 | \$8,475,000**

Hale Nana Kohola (The Whale Watch House) is Puako's premier luxury beachfront vacation home with gorgeous ocean, sunset, Kohala and Maui views. There is nowhere more beautiful to spend your days! The resort/hotel zone allows a 45-foot building height, allowing this dramatic architecture with an observation deck where you can enjoy whale watching. This tropical retreat offers 4 suites + media room with full bath, heated infinity saltwater pool, office, and 1,715 SQFT of lanais in beautiful and private tropical garden settings. This popular vacation home with approved STVR registration has exceptional rental history with repeat clientele. Offered furnished.



Tomoko Matsumoto
REALTOR® Principal Broker, Owner
Hapuna Realty
68-1330 Mauna Lani Drive, Suite 130 Kohala Coast, HI 96743
www.HapunaRealty.com | Tomo@HapunaRealty.com
808.557.8689



\$19,900,000

BRAND-NEW
CONTEMPORARY
LUXURY BEACHFRONT
ESTATE

**Puako, Big Island | 5,360 SQFT
2.007 AC | 5BR/6+2HLF BA
MLS# 640170 | \$19,900,000**

Puako Bay Lot 1, known as Kahieluana (a place to relax and enjoy the company of loved ones), is one of the most amazing offerings in the area. The brand-new, contemporary yet comfortable residence is located on a terraced and elevated 2+ acre bayfront parcel in charming Puako on the Kohala Coast. It is the ultimate dream estate with 5 master bedrooms + a bunk room/office, tennis court, swimming pool, sand volleyball court, and small black sand bay in front! Amazing sea life abounds in the nearby reef with turtle cleaning stations, colorful tropical fish, and manta and spotted eagle rays. Beach 69, a local secret, is only a 10-minute walk. Offered furnished.



Tomoko Matsumoto
REALTOR® Principal Broker, Owner
Hapuna Realty
68-1330 Mauna Lani Drive, Suite 130 Kohala Coast, HI 96743
www.HapunaRealty.com | Tomo@HapunaRealty.com
808.557.8689



FOR SALE

65 Wili Okai Way Maui, Hawaii

Island dreams? Make them come true! Work and play in this gorgeous estate on Maui. Gracing the slopes of the West Maui Mountains, this property is one of the top properties in Hawaii.

65 Wili Okai Way offers the best of style and modern amenities to allow for a great work/life environment!

\$8,750,000 USD

Call Now To Learn More



Greg Burns

R(S) 70354

808.214.0302

greg@isleluxury.com

Greg Burns is a real estate licensee affiliated with Compass, a licensed real estate broker and abides by equal housing opportunity laws.



COMPASS