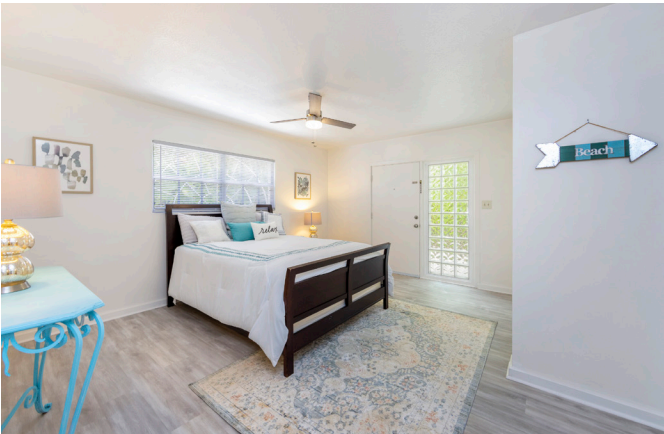


\$2,750,000

3030 KIELE AVENUE—
DIAMOND HEAD

Honolulu, Oahu | 3,600 SQFT
5,100 SQFT Land | 6BR/6BA
MLS# 202104856 | \$2,750,000

Nestled at the footsteps of Diamond Head & one block from the Pacific Ocean sits 3030 Kiele Avenue, a newly updated home with an island-contemporary design. Fully renovated in 2021 with modern upgrades including a Chef's kitchen with lacquer cabinetry, stainless appliances & walk-in pantry, an open-concept living area combining kitchen, dining, indoor & outdoor living spaces, & an ultra-flexible 6 bedroom, 6 bath, 3,600 sq.ft. floor plan with multiple entrances & space for 9-car parking. Shrouded in private landscaping with old growth Starfruit, Apple Banana, & Mountain Apple trees on property, enjoy a sustainable lifestyle while relaxing in the shade; ocean access is just across the street, perfect for a morning swim or surf session, with sandy beaches, shops, restaurants, & entertainment within blocks.



Sachi Braden
Sachi Hawaii
CEO, Founder, & Principal Broker | RB-16308
808.596.8801
info@sachihawaii.com | www.sachihawaii.com

ハワイの不動産売買、別荘管理、賃貸管理に関するお問合せは日本語でどうぞ
サチハワイ総合不動産会社ーハワイ高級物件のエキスパート



Office License
RB-18153

