



HAWAI'I LIFE

Forbes
GLOBAL PROPERTIES

Noel Pietsch Shaw
MBA, S. Realtor-Associate, RS-75888
HAWAI'I LIFE
EXCLUSIVE MEMBER OF
FORBES GLOBAL PROPERTIES
808.221.8889
noelshaw@hawaiilife.com



\$10,500,000



MAUI GOLD COAST - TWO OCEANFRONT PARCELS

Kihei, Maui | 30,056 SQFT Land
MLS# 388360 | \$10,500,000

RARE OFFERING.....2 parcels at the very north end of a quiet residential street. Over 205 LINEAR FEET of frontage in this epic beachfront setting!! 2 contiguous lots comprising 30,035 sq.ft.; lot #1 is 18,527 sq.ft. and lot #26 is 11,508 sq.ft. Seller's preference is to sell as one. The land is perched on a small knoll maximizing views of the West Maui Mts and stellar year round sunsets. All utilities to site.



David W. Richardson
(R)B 10780
Hawaii Life Real Estate Brokers
Direct 808-870-9916
www.MauiOceanfront.com
Dave@HawaiiLife.com
HL-1 Director | “Top 2 agent on Maui 2018”

\$9,875,000



"KA MAUNA ALOHA" JEWEL OF THE MOUNTAIN

Kula, Maui | 7,102 SQFT | 5.28 AC
3BR/4BA | MLS# 389258 | \$9,875,000

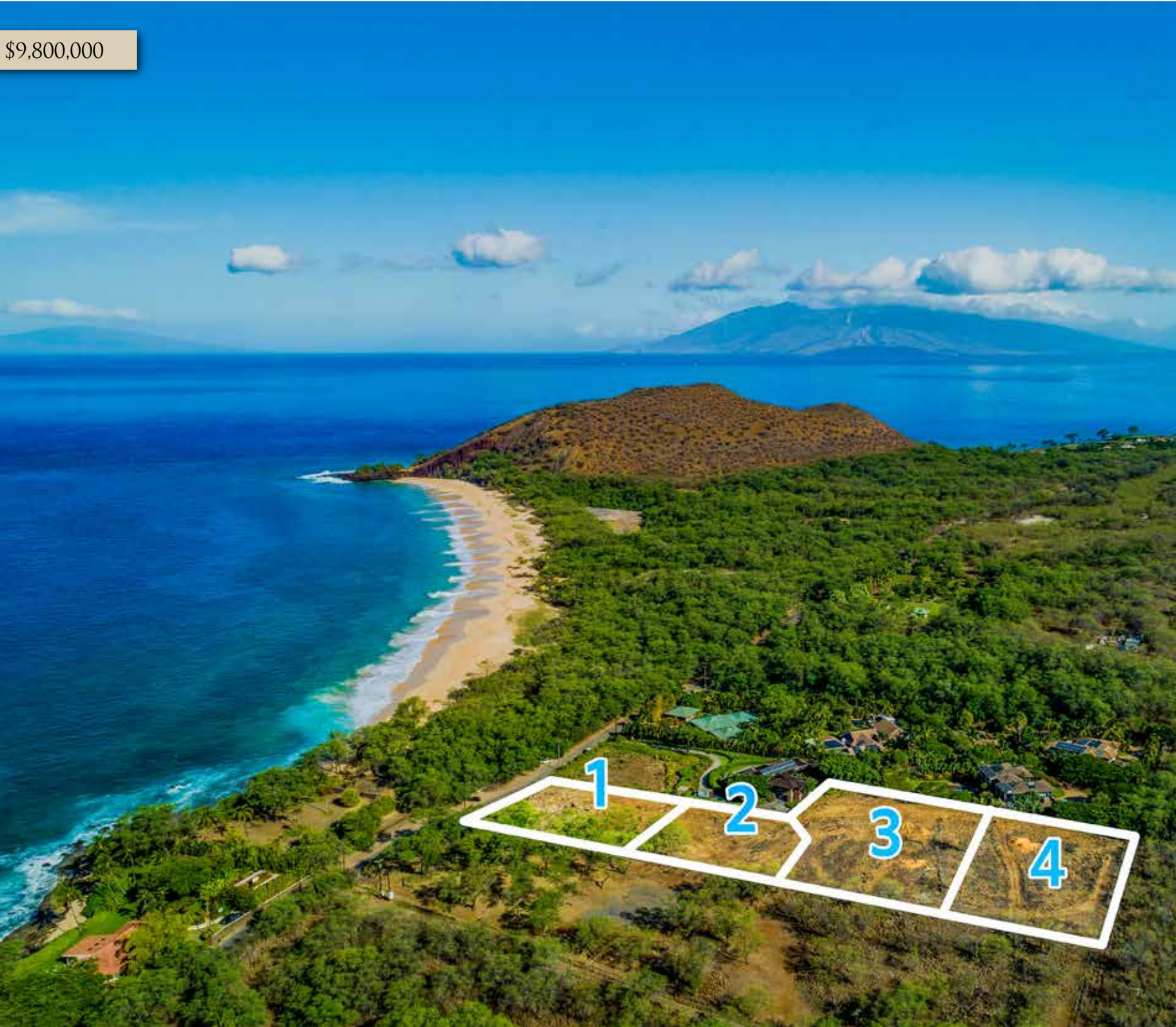
At an ideal elevation of 2,700 ft, you will pass through the private gates and enter a long, tree-lined, driveway to the finest estate in Upcountry Maui. The panoramic bi-coastal views are breathtaking. Peace and serenity await the new owners of this exquisite manor.



Riette G. Jenkins
Managing Director of Global Luxury
Realtor-Broker, RB-17543
808.870.4073
riette@waileahawaii.com
waileahawaii.com



\$9,800,000



BIG BEACH ESTATES

Makena, Maui | 2.79 AC | \$9,800,000

Located on one of the most exclusive and beautiful coastlines in the world, South Maui’s Big Beach Estates offer amazing views and that remote island experience with all of the conveniences of being in town just minutes away. Purchase this property as a 2.79 acre private estate or for its development potential. This is one of the last available parcels in Makena and offers a multitude of development options. The four lots are also available separately at this time, subject to final subdivision approval: Lot 1 \$2.2M, Lot 2 \$2.6M, Lot 3 \$2.8M, and Lot 4 \$3.2M.

www.bigbeachestatesmaui.com



Josh Jerman
REALTOR(B), RB-19728
808.283.2222 | Josh@HawaiiLife.com
www.josh.hawaiiilife.com



David W. Richardson
REALTOR(B), RB-10780
808.870.9916 | Dave@HawaiiLife.com
www.MauiOceanfront.com
HL-1 Director | “Top 2 agent on Maui 2018”





\$8,800,000



LIFE ON LANAI AT HULOPOE BAY

**Hulopoe Bay, Lanai | 4,951 SQFT
1.2 AC | 4BR/4.5BA | MLS# 387833
\$8,800,000**

This alluring Estate is perched above Hulopoe Bay and Sweetheart Rock, Puu Pehe. A safe, sustainable sanctuary that feels a world away but is still in the US on the Covid-19 free island of Lanai. With commanding views of Hulopoe Bay, this serene gated estate features a carbon neutral home, mature landscaping and automated pool system. The private residence welcomes you with dramatic views of Maui and Kahoolawe from a living room with disappearing glass walls for the best of indoor-outdoor living. A master suite with private deck, walk-in closet with laundry, and large bath are the epitome of the tropical luxury. Dining and Resort amenities are available at the nearby Four Seasons Resort Lanai. A 40' fishing boat with slip at the Manele Harbor can also be included.

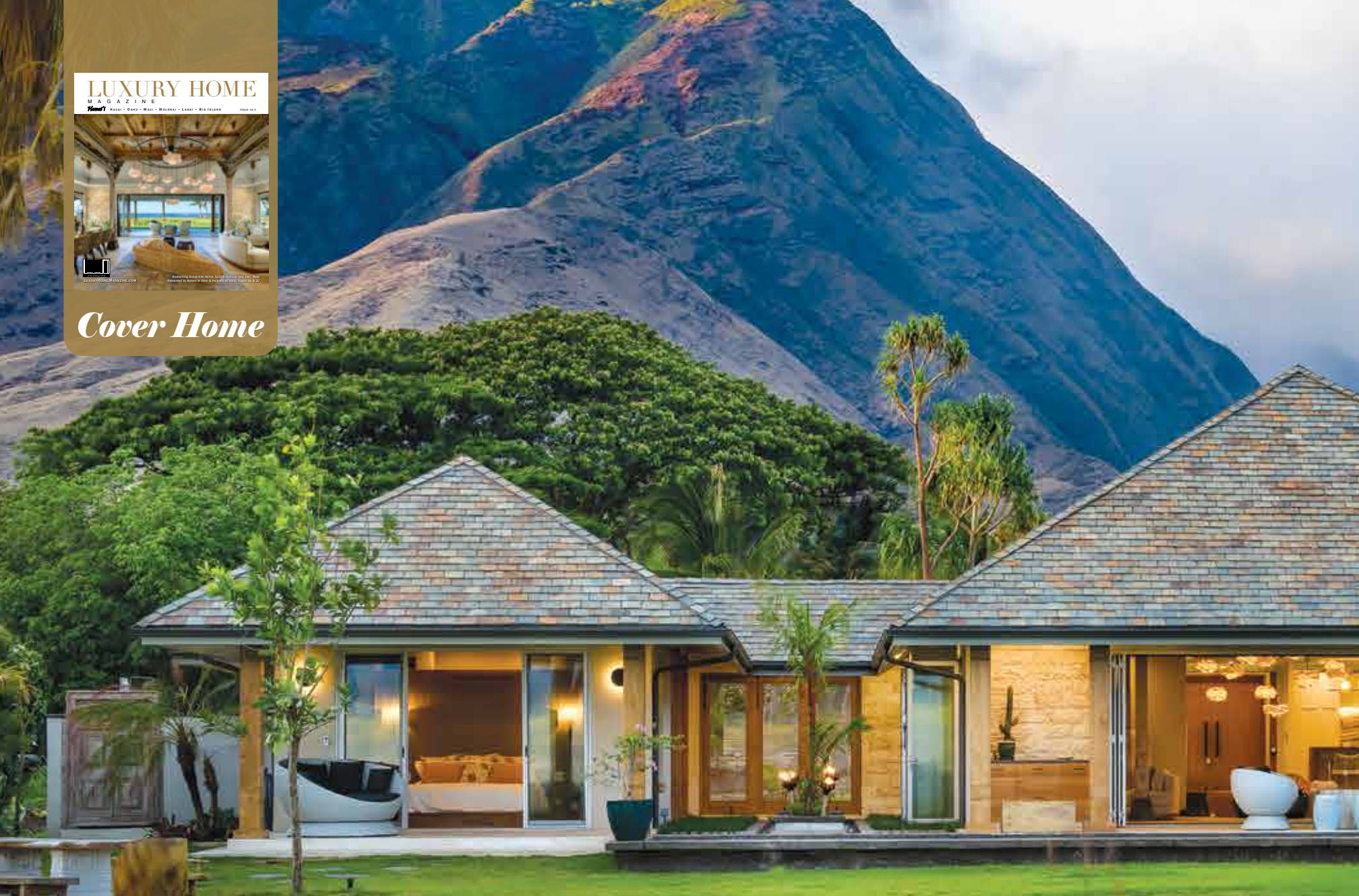


Nam L. Le Viet
R(S)-61810
Hawaii Life Real Estate Brokers
Direct: 808.283.9007
Email: nam@mauisold.com
Web: mauisold.com



Mary Anne Fitch
R(B)-15747
Hawaii Life Real Estate Brokers
Direct: 808.250.1583
Email: sold@maui.net
Web: soldmaui.com





OCEANSIDE RESIDENTIAL WORK OF ART

Olowalu, Maui | 2,562 SQFT | .54 AC | 3BR/3.5BA | MLS# 388443 | \$7,995,000

This Olowalu residence, fronting conservation land and the beach, possesses the raw experience of the 'mana of Maui' through its world-class architecture & interior design. The compelling presence of the indigo blue Pacific, punctuated by the cerulean horizon, is wonderfully distracting as you pass through the hand-carved teak 'Menehune' columns & pivotal front doors. Velvety plaster walls rise from the etched acid-washed marble floors along open-air corridors with hand-carved limestone Banana Tree wall reliefs, Kahili Tiki torches, waterways & gardens, Birdcage pendant lighting & Peacock wall sconces! Enhancing the

great room, an intricately carved teak 'Javanese Joglo' is a spirit-lifting, museum-like wonder. Delight in the artistry throughout; a translucent Cloud chandelier made of zippers, antique Obis, silk rugs, petrified wood, painterly book-matched marble back-splashes, glazed lava-stone kitchen counters, along with soft-close wood cabinetry & jacquard silk & fine-glass wall treatments. The marble & granite master bath mosaic, iron & bronze entry gates mimic the nearby 150-year-old Monkeypod trees. Rarely will you come upon an opportunity to choose to dwell in such a peaceful Maui residence! www.Olowalu.info

\$7,995,000



Robert H. 'Robbie' Dein

Broker-Owner, ABR, CRS, RSPS | RB-18398
Maui Real Estate Advisors, LLC
Direct: 808.250.3564
Robbie@MauiRealEstateAdvisors.com



Maui's Only Realtor Recognized as a 'Top 100 State of Hawaii Realtor' Among 15,000 + Hawaii Realtors (for 14 Consecutive Years),
Top 100 Hawaii Realtors Hall of Fame, Hawaii Business Journal 2006–2019

Kenneth M. 'Ken' Hayo

Principal Broker-Owner | RB-15529
Maui Real Estate Advisors, LLC
Direct: 808.283.8435
Ken@MauiRealEstateAdvisors.com





33 HANA HWY

Paia, Maui | 2,260 SQFT | 27,913 SQFT Land | 5BR/3BA | MLS# 390712 | \$8,500,000

Located in the timeless beachfront community of Paia sits a modern, stylish private beach home, with **170 feet** of sandy beachfront.

Enter through a private gate to this .67 of an acre compound. Once inside, your world shifts and slows down, as the transition to beach life begins. The main home is a modern and comfortable 4,300 sf beach home with a 1,000 sf Ohana.

Three miles of beach walks right from your front door. The covered lanai has sweeping Pacific Ocean views and is complemented by modern and cozy living areas, including a chef-style kitchen, clean white marble bathrooms, and a 3 car garage. This is a rare opportunity to be right in the heart of Paia and on a world-class white sand beach. Beautifully furnished and totally turnkey, just bring your bathing suit and surfboard.

\$8,500,000



COLDWELL BANKER | ISLAND PROPERTIES



Rhonda Smith Sanchez

RB-22953

Maui's North Shore Specialist

808.205.2175

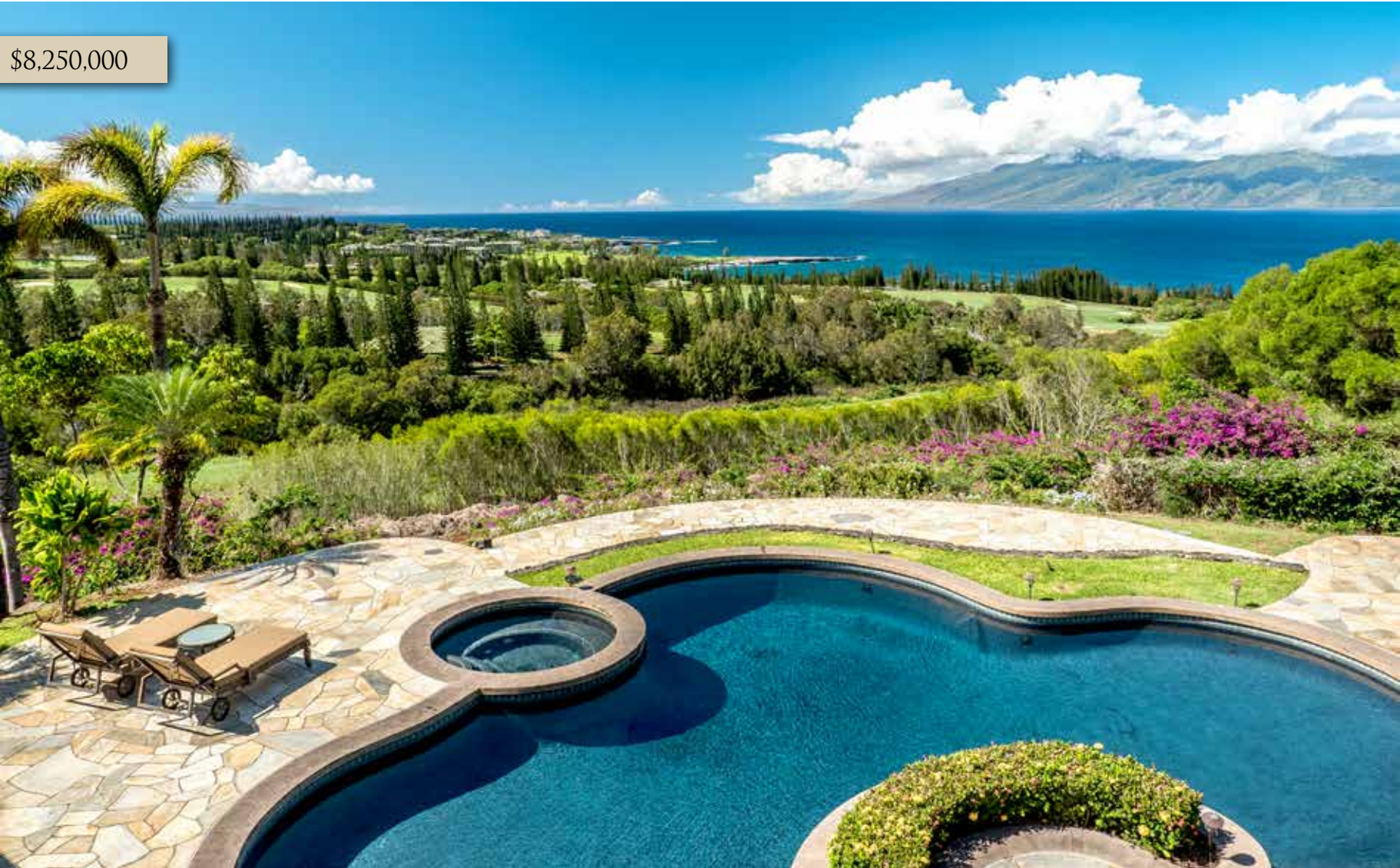
Rhonda@RhondaMaui.com

Rhondamaui.com



LuxuryHomeMagazine.com

\$8,250,000



218 PLANTATION CLUB DR

Kapalua, Maui | 7,267 SQFT | 2.19 AC
5BR/5.5BA | MLS# 388247 | \$8,250,000

Experience the majestic year-round sunset, ocean and island views of this magnificent home. This incredible residence sits on 2.19 acres of prime real estate perched above the 18th fairway over the renowned Plantation Golf Course at Kapalua. These gorgeous views can be enjoyed from every room and overlook five fairways to the ocean. Offering over 7,200 square feet of luxurious living space with five bedrooms and five and half bathrooms, it also features a glass fronted wine cellar, gourmet kitchen, exquisite dining room, and media room with sound system, including bar.
www.MauiHomeSales.com/218Plantation



Robert R. Myers
REALTOR (S), SRS
Tel: 808.283.3067
Robert@MauiHomeSales.com
www.MauiHomeSales.com

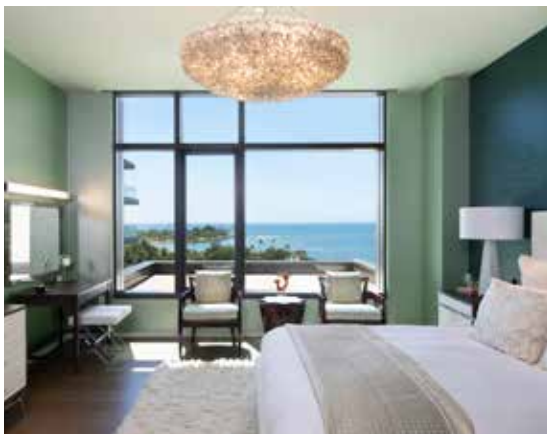


For all the Maui listings check out my website:
www.MauiHomeSales.com
Including Interactive Maps of Kaanapali, Kapalua and Wailea

COLDWELL
BANKER
ISLAND
PROPERTIES



\$7,888,000



SKY RESIDENCE AT PARK LANE ALA MOANA

Honolulu, Oahu | 3,058 SQFT | 3BR/3.5BA
MLS# 202028244 | \$7,888,000

With direct ocean views, incredible mountain views and fronting Ala Moana Beach Park, Park Lane #7705 represent a single-family home experience in the sky. The quintessential “U-shape” design of the Sky Residences envelops a deep covered lanai, making the outdoor space a true extension of the home. This home includes upgrades including window coverings, luxury designer paint, designer closet systems and cabinetry, 2 parking stalls and a large storage room. Park Lane is a visionary project developed by the MacNaughton Group & Kobayashi Group on the ocean side of Ala Moana Center in Honolulu.



HAWAII LIFE

Forbes
GLOBAL PROPERTIES

Noel Pietsch Shaw

MBA, S. Realtor-Associate, RS-75888

HAWAII LIFE

EXCLUSIVE MEMBER OF

FORBES GLOBAL PROPERTIES

808.221.8889

noelshaw@hawaiilife.com



YOUR SANCTUARY ON THE KONA COAST



HOME HAPPENS HERE.

Nestled on the idyllic Kona coastline of the Big Island of Hawai'i, the exclusive community of Kohanaiki features a 67,000-square-foot private clubhouse & spa, 18-hole Rees Jones golf course, adventure team, beach club, organic community farm and exquisite dining, all within 450 acres of oceanfront luxury estates. Homes designed by renowned architects like Shay Zak, Khoi Le and Jim McLaughlin are inspired by the rugged landscape of ancient lava flows, panoramic ocean views, and the ever-present Kona sunshine. Discover your new sanctuary at Kohanaiki. **From \$2.8 Million.**

Access to and use of the golf course and other private amenities at Kohanaiki Club is available only to members of the Kohanaiki Club and are subject to the payment of additional fees. Membership to the Kohanaiki Club is by invitation only and is not included with a purchase of a property. No representation or warranty is made regarding whether a purchaser will qualify for such membership. Obtain the Property Report or its equivalent required by Federal and State law and read it before signing anything. No federal or state agency has judged the merits or value, if any, of the property shown in this brochure. WARNING: THE CALIFORNIA DEPARTMENT OF REAL ESTATE HAS NOT INSPECTED, EXAMINED, OR QUALIFIED THIS OFFERING. Kohanaiki Realty LLC, 73-2055 Ala Kohanaiki, Kailua-Kona, HI 96740.





Call for your private tour
(888) 406-1256 | kohanaiki.com/kona

\$7,659,000



WALEA POINT,
RARE DOUBLE UNIT

Wailea, Maui | 4BR/6BA
4,821 SQFT | MLS# 389789 | \$7,659,000

Recently renovated, this rare double-condo, ocean-view residence has artisan-quality stone, custom tile & warm hardwoods throughout. Each unique room offers views & vistas that delight. Wailea Point is bordered by the Four Seasons to the right and the Fairmont Kea Lani to the left. Just steps away are The Shops at Wailea and fabulous dining.



Riette G. Jenkins
Managing Director of Global Luxury
Realtor-Broker, RB-17543
808.870.4073
riette@waileahawaii.com
waileahawaii.com





LOT 35 AT KOHANAIKI

Kohanaiki, Big Island | 1.28 AC
MLS# 637665 | \$6,250,000

Overlooking the 14th and 15th holes at the Kohanaiki Golf Club, Lot 35 offers stunning golf course and ocean views. The residential community and Kohanaiki Club are built around luxury, sustainability and world-class amenities. The Kohanaiki Club is a private equity club and membership is by invitation only to Kohanaiki Property Owners.



Joni J. Metzler
(R) B
Metzler Realty
808.640.6832
Joni@MetzlerRealty.com
www.MetzlerRealty.com



\$5,900,000



COASTAL RETREAT IN DIAMOND HEAD

**Diamond Head, Oahu | 3,419 SQFT
4BR/3BA | MLS# 202018365 | \$5,900,000**

This exquisite residence, designed by award winning architect James McPeak, is the pinnacle of modern elegance. Moments from the beach, and world class surf, this two-story home offers a relaxed tropical lifestyle with luxurious amenities and coastal ocean views. The home is comprised of a generous four-bedroom floor plan with high quality craftsmanship, rich wood floors, Venetian plaster interior walls, and a soothing color palette. The spacious living room features high ceilings, open floor plan that seamlessly transitions between indoors and out. Special features include salt water pool with swim jets, spa and outdoor shower.



Vicki Hossellman

RA|RS-38718

Luxury Property Specialist

808.351.3833

Vickih@cbpacific.com

www.VickiHossellman.com



COLDWELL BANKER
ISLAND PROPERTIES

\$5,499,000



4324 WAILINA STREET

Kihei, Maui | 3,733 SQFT
12,184 SQFT Land | 4BR/4BA
MLS# 391262 | \$5,499,000

It's all about quality of life, and this home in the gated community of Wailea Golf Vistas provides all that and more. A commanding view down the 16th fairway yet elevated to provide privacy, the home was designed to maximize views and retain a sense of solitude. One-level living with bonus spaces on other levels. Fleetwood doors open to a covered lanai with pool and spa to soak away aches and pains under the stars with the lights of Wailea as a backdrop. Smart lighting and alarm system and 41 photovoltaic panels on a net metering system is efficient and easy to control. I am proud to represent this exceptional home for the first time on the market.



HAWAII LIFE

Forbes
GLOBAL PROPERTIES

David W. Richardson

(R)B 10780

Hawaii Life Real Estate Brokers

Direct 808-870-9916

www.MauiOceanfront.com

Dave@HawaiiLife.com

HL-1 Director | "Top 2 agent on Maui 2018"



\$5,200,000



PRIVACY AND
OCEAN VIEWS

Lahaina, Maui | 4,039 SQFT
7.1 AC | 5BR/5.5BA
MLS# 390708 | \$5,200,000

This exclusive gated 7-acre property offers a secluded luxury home along with a car enthusiast's dream...a brand new 6-car garage complete with a photovoltaic system. Tucked beneath the West Maui Mountains, this extraordinary home has stunning ocean views. Constructed with utmost craftsmanship, this single level home with 4,039 sq. ft. has 5 bedrooms and 5.5 baths. The chef's kitchen features black absolute granite countertops, a 6 burner Wolf cooktop, double ovens, a Sub- Zero refrigerator and a walk-in pantry. You've never seen such privacy in Launiupoko and only minutes to shops, restaurants, beaches & golf.



Jan Bryan
R(S) 69056
Coldwell Banker Island Properties
808.214.7837
Jan@JanBryan.com
www.JanBryan.com



COLDWELL BANKER
ISLAND PROPERTIES



\$4,950,000

KANEOHE BAYFRONT ESTATE

Kaneohe, Oahu | 6,005 SQFT
16,817 SQFT Land | 4BR/6.5BA
MLS# 202108830 | \$4,950,000

Nestled on a quiet cul-de-sac adjacent to Kaneohe Yacht Club, this stunning residence was designed for entertaining. The 6,000+SF of living space centers around a striking spiral staircase that transcends three floors overlooking Kaneohe Bay. There are two spacious master bedrooms on the third floor, an open concept living room, dining area, kitchen, and powder room on the main floor, and a great room with wet bar, study, guest bedroom, and private in-law suite. The expansive lawn flows to a bayside pavilion with infinity edge pool overlooking a secluded lagoon with boat dock and ramp.



Dave Moyer

Principal Broker | Realtor
RB-18853
Hawaii Sands Realty
dmoyer@hawaiisands.com
808.379.3016



HAWAII SANDS REALTY
Portfolio Properties

RB-21815

Alex Watson

Partner | Realtor-Associate
RS-78706
Hawaii Sands Realty
awatson@hawaiisands.com
808.725.2521



Luxury Real Estate & Property Management



live who you are

Corcoran Pacific has your home in Hawaii.

**Locally owned and operated since 2005.
A tradition of excellence and impeccable service.**

corcoran

PACIFIC PROPERTIES

KAUAI | OAHU | MAUI | HAWAII ISLAND | [CORCORANPACIFIC.COM](https://www.corcoranpacific.com)

©2020 Corcoran Group LLC. All rights reserved. Corcoran® and the Corcoran Logo are registered service marks owned by Corcoran Group LLC. Corcoran Group LLC fully supports the principles of the Fair Housing Act and the Equal Opportunity Act. Each Office is independently owned and operated.