

# LUXURY HOME<sup>®</sup>

M A G A Z I N E

*Hawai'i*

KAUAI • OAHU • MAUI • MOLOKAI • LANAI • BIG ISLAND

ISSUE 16.3



At The Newsstand: \$7.99

LUXURYHOMEMAGAZINE.COM

Enchanting Oceanside Home, 11505 Honoapi'ilani Hwy, Maui  
Presented by Robert H. Dein & Kenneth M. Hayo, Pages 26 & 27





Ward Village  
**ANAHA**  
 #2801

**\$3,380,000**

- 3 BD, 3 BA, 1,939 sf.
- Ocean, Beach Park, Mountain, Marina, Sunset & City Views



Ward Village  
**ANAHA**  
 #1201

**\$2,689,000**

- 3 BD, 3 BA, 1,939 sf.
- Ocean, Beach Park, Mountain, Marina, Sunset & City Views



Ward Village  
**ANAHA**  
 #601

**\$1,999,000**

- 2 BD, 2 BA, 1,567 sf.
- Ocean, Beach Park & Sunset Views



**John "Jack" Tyrrell**  
 President  
 Principal Broker, CRS, CRB  
 CPA (not in public practice)  
 Lic. # RB-19880  
 E: Jack@jtchawaii.com  
 C: 808.306.6933



**May Lew Tyrrell 廖富溪**  
 Executive Vice President  
 Broker-In-Charge, MBA, GRI, CRS, CRB, CIPS  
 Lic. # RB-22693  
 WeChat: Mayinhawaii (普通话)  
 E: May@jtchawaii.com  
 C: 808.223.3364





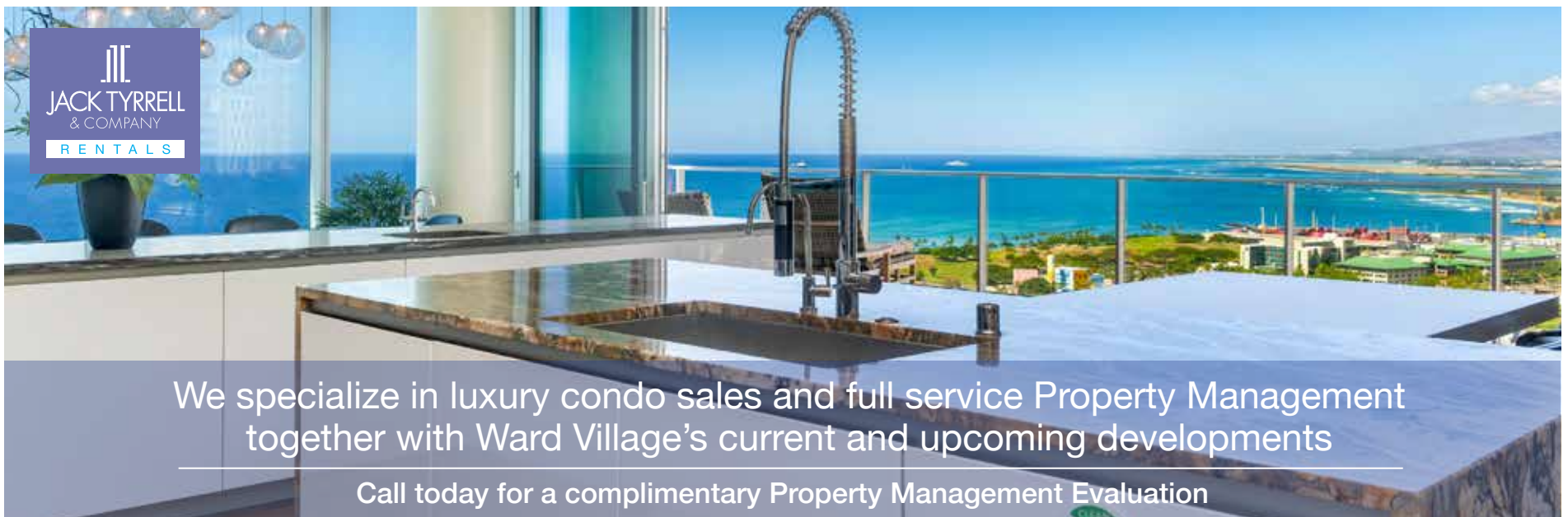


# WAEIA VILLA 2

## \$5,000,000

- 4 BD, 3 BA, Net Living - 2,841 sf. Lanai - 2,799 sf. Total - 5,640 sf.

Looking for a one of a kind experience? Don't miss out on this sophisticated private villa. Waiea Villa 2 offers a luxurious single-family home in Ward Village, the award-winning, walkable, secure neighborhood with the city's most unique dining and shopping just outside your doorstep! This elegant 4BD/3BA villa is one of only ten villa homes designed for the exclusive Waiea development, and the only garden-level villa with an additional fourth bedroom. Numerous special upgrades include a commissioned art mural by Maya Hayuk, custom kitchen details and appliances, a unique master suite layout, your own private pool and jacuzzi.



We specialize in luxury condo sales and full service Property Management together with Ward Village's current and upcoming developments

Call today for a complimentary Property Management Evaluation



**WARD VILLAGE**  
Top Producing Agent by  
Units & Dollar Volume  
2014

**WARD VILLAGE**  
Top Producing Agent by  
Units & Dollar Volume  
2015

For More Information:  
808 532 3330  
[www.jtchawaii.com](http://www.jtchawaii.com)



Jack Tyrrell & Company



@jtchawaii



@jtchawaii

**JACK TYRRELL**  
& COMPANY

A Real Estate Brokerage Corporation

\* The information presented herein is provided as is, without warranty expressed or implied of any kind. Information herein deemed reliable but not guaranteed.





## 1516 MOKULUA DRIVE

Kailua, Oahu | 8,949 SQFT | 22,314 SQFT Land | 10BR+Den/8 Full+3 Half BA | MLS# 202101216 | \$11,895,000

Coastal Island Retreat... Swim, sun and recharge from your very own oceanfront resort! This sprawling residence situated on a spacious and beautifully manicured parcel offers a large 5-bedroom main home plus, a separate 5 bedroom + den guest house complete with its own private entrance. Meandering tropical pathways lead you to an impressive entry complete with a cascading water feature and Koi pond. Striking open living spaces with soaring ceilings and beautiful rich

hardwood details overlook gorgeous turquoise waters and direct Mokulua island views. The sizeable master suite offers dual baths & dressing areas, a private seaside lounge area + an adjacent home gym. The kitchen seamlessly connects to the seaside dining room with outstanding views and is ideal for casual or grand entertaining. This estate is perfect for extended family enjoyment, home office use + every imaginable watersport right at your back door! This is life!



\$11,895,000



**COLDWELL BANKER  
REALTY**



*TA*  
**TRACY ALLEN**  
LOCAL EXPERTISE | GLOBAL REACH



© 2021 Coldwell Banker Realty | 1314 S King Street, 2nd Floor Honolulu, Hawaii  
96814 | (808) 927-6415 The information contained herein,  
while not guaranteed, has been obtained from sources believed to be reliable. All  
square footages are approximate and may differ from the tax records.

**Tracy Allen**  
Vice President, RA, RS-46610  
Global Luxury Ambassador  
Luxury Property Specialist  
808.927.6415  
Tracy@CBRealty.com  
www.TracyAllenHawaii.com  
#1 Agent in Hawaii, Coldwell Banker Realty



LuxuryHomeMagazine.com



# ISSUE 16.3

## INDEX



\* Founding or Prestigious Member

### THE ISLAND OF MAUI

David W. Richardson	22, 24, 37, 55
Diane K. Pool*	65
Gregory Harbottle Inc.*	7
Jan Bryan	38
Josh Jerman	11, 24
Kenneth M. 'Ken' Hayo*	Front Cover, 12-13, 26-27, Back Cover
Leah Harbottle*	7
Mary Anne Fitch*	9
Nam L. Le Viet*	9
Riette G. Jenkins	23, 34
Robert H. 'Robbie' Dein*	Front Cover, 12-13, 26-27, Back Cover
Robert R. Myers*	30, 47, 57, 63
Rhonda Smith-Sanchez	28-29, 44-45
Tim Stice	11
Whitney Wolfe	59
Yvienne M. Peterson	53

### THE ISLAND OF OAHU

Alex Watson	39
Dave Moyer	39
Erik Hinshaw	16
Esther H. Park	54
Gretchen Booma	60
John "Jack" Tyrrell*	2-3
May Lew Tyrrell*	2-3
Munro Murdock	56
Nina Pfaffenbach	69
Noel Pietsch Shaw	20-21, 31, 42
Sachi Braden	58
Tracy Allen*	4-5
Vicki Hossellman	36

### THE ISLAND OF KAUAI

F. Lee Morey	61
Hannah Sirois	46

### THE BIG ISLAND

Donna Duryea*	62
Eileen Lacerte*	43
Hapuna Beach Residences	72-73
Hokuli'a	48-49
Joni J. Metzler*	14, 35
Kohanaiki	32-33
Marco A. Silva	50-51, 66-67
Meg Saunders	62
Rebecca Keliihoomalu	41
Renée H. Kraft	52
Tomoko Matsumoto*	74-75
Yvonne Khouri-Morgan*	15

### THE ISLAND OF LANAI

Mary Anne Fitch*	25
Nam L. Le Viet*	25

### BUSINESS PARTNERS

Corcoran Pacific Properties	40
Padilla Designs, LLC*	10
Coldwell Banker Island Properties	70-71

### RENTALS

Jack Tyrrell & Company Rentals	3
--------------------------------	---



### FRONT COVER HOME

11505 Honoapi'ialani Hwy  
Pages 26 & 27  
Photography by Travis Rowan

LUXURY HOME MAGAZINE®  
PACIFIC LUXURY LIVING™  
501 Fourth Street, #854  
Lake Oswego, OR 97034  
Phone: 808.499.5491

#### FOR ADVERTISING INFORMATION VISIT:

[luxuryhomemagazine.com](http://luxuryhomemagazine.com)  
[info@lhmhi.com](mailto:info@lhmhi.com)

The most comprehensive and targeted distribution in the area, bar none!

#### LHM Media Group

Phone: (916) 458-6010  
[info@lhmmediagroup.com](mailto:info@lhmmediagroup.com)  
[LuxuryHomeMagazine.com](http://LuxuryHomeMagazine.com)

Visit Our Blog:  
[LuxuryHomeMagazine.com/blog](http://LuxuryHomeMagazine.com/blog)

Chief Executive Officer  
Solar Hing

Chief Operations Officer  
Jessica Hing

Publishing Opportunities  
[publishing@lhmmediagroup.com](mailto:publishing@lhmmediagroup.com)

Published six times per year  
©2021 LHM Media Group

Luxury Home Magazine®, Luxury Living and Lifestyle™ and LuxuryHomeMagazine.com are protected trademarks of LHM Media Group. Publisher is an authorized Independent Distributor and Licensee for a market specific area of Luxury Home Magazine®, Luxury Living and Lifestyle™ and LuxuryHomeMagazine.com. Publisher is licensed through LHM Media Group. LHM Media Group is not responsible for the contents of the magazine or the acts or omissions of the publisher or its representatives and makes no representations or guarantees. Reproduction in whole or in part (including materials, photos and formats) in any form without written permission from LHM Media Group is prohibited. All submissions become the property of LHM Media Group and may be used in any print, digital, social and online media. All rights reserved.

The information contained in *Luxury Home Magazine®* is deemed reliable, but not guaranteed. Contact each individual agent to verify information, which is subject to change.



Made and Printed in the USA.

## Next Deadline: Wednesday, July 7<sup>th</sup>, 2021

ISSUE	DEADLINE	CIRCULATION
16.4	07/07/21	08/06 – 10/07
16.5	09/08/21	10/08 – 12/02
16.6	11/03/21	12/03 – 02/20



\$4,495,000



## HONUA KAI - HOKULANI #551

Kaanapali, Maui | 2,290 SQFT  
3BR/3BA | MLS# 391441  
\$4,495,000

Experience unobstructed views of the Islands of Lana'i and Moloka'i from this luxurious Oceanfront residence. Located in the prestigious Hokulani Tower of the Honua Kai Resort & Spa, Unit #551 is the beachfront location you've been waiting for. This 5th floor, pristine home has had a single owner and has never been utilized as a vacation rental. Gourmet kitchen, custom Koa-wood furnishings and island-style art throughout, this exemplary condo is fully furnished and move-in ready. An expansive 560 Sqft wraparound lanai with outdoor kitchen highlights this spectacular property. Resort amenities include 3 elaborate pools, 5 hot tubs, full-service day spa and workout facility, on-site restaurant and a gourmet market. This definitive luxury residence is not to be missed.



### Leah Harbottle

Realtor®-Broker, Lic. #22910  
Cell: 530.906.9180  
Toll Free: 866.661.7887  
Fax: 808.661.8358  
Leah-Whalers@KW.com  
www.KaanapaliLuxuryLiving.com



### Gregory Harbottle Inc. R (PB)

Luxury Property Specialist, Lic. #19615

Cell: 808.385.8059

Toll free: 866.661.7887

Fax: 808.661.8358

ghthkh@msn.com

www.KaanapaliLuxuryLiving.com





# Aloha from Maresa

Say Aloha! Send editorial & advertising inquiries to [info@lhmbhi.com](mailto:info@lhmbhi.com)



At *Luxury Home Magazine*, we are honored to showcase the best of the best when it comes to Hawaii's top-notch props. It is our goal to connect Realtors, buyers, and sellers, but also to serve the home industry as a whole and create evergreen inspiration for all homeowners.

What architectural style, kitchen color, or fine finish catches your eye on the following pages?

In this issue, we explore creating cultured island interiors with natural wood. Whether sleek and modern or carved and worldly, wood applications can ground new construction and infuse your home with biophilic design. We love how this issue's front cover home blends contemporary and historical by using by showcasing live edges, slat style, and show-stopping carved elements. For more information about the Olowalu, Maui Oceanside Residential Work of Art | 11505 Honoapi'ilani Hwy, presented by Robbie Dein and Ken Hayo, turn to pages 26 and 27.

Thank you for taking the time to pick up the magazine, read this note, and share some Aloha. We appreciate you!

Mahalo,  
*Maresa Giovannini*  
Maresa Giovannini  
Editor in Chief



Kona Oceanfront Paradise, See Page 50

# Lucky We Live Hawaii

## IN THIS ISSUE



48 | Hokuli'a



17 | Branching Out



59 | Makena Retreat



72 | Hapuna Beach Residences



FOLLOW US ON  
INSTAGRAM!

@hawaiiluxuryhome



\$19,500,000



## 4851 LOWER HONOAPIILANI RD

**Kahana, Maui | 8,469 SQFT  
0.93 AC | 8BR/7BA/2HLF BA  
MLS# 390187 | \$19,500,000**

This West Maui Exclusive Oceanfront Compound includes two adjacent homes, 4851 Lower Honoapiilani Road and 10 Hui Road E in Kahana. Architecturally designed to maximize ocean views, this family estate accommodates 16 people comfortably. Built with quality high-tech materials and finishes throughout, the main home features a large great room, dining area, gourmet kitchen, media room, elevator, BBQ area, fabulous infinity pool/spa, attached Ohana and gate to the ocean. The second residence, along with its own garage and private entrance, offers all the luxury amenities to provide guests total independence.



**Nam L. Le Viet**  
R(S)-61810  
Hawaii Life Real Estate Brokers  
Direct: 808.283.9007  
Email: nam@mauisold.com  
Web: mauisold.com



**Mary Anne Fitch**  
R(B)-15747  
Hawaii Life Real Estate Brokers  
Direct: 808.250.1583  
Email: sold@maui.net  
Web: soldmaui.com







Photos: J. Anthony Martinez Photography Maui



Bronze Wall Sculpture 5' x 18'



Manifestation of a  
collaboration with  
Lanakila Creations  
and Padilla Designs



SERVING ALL HAWAIIAN  
ISLANDS & BEYOND

808 879 0938



PLEASE VISIT OUR GALLERY  
[padilladesigns.com](http://padilladesigns.com)





\$18,000,000



## 600 HAUMANA ROAD

Haiku, Maui | 5,938 SQFT | 73.21 AC  
5BR/4.5BA | MLS# 389740 | \$18,000,000

Maui oceanfront 73-acre estate with maximum privacy, security, and open space. This is the 1st time ever this estate has been offered for sale. The parcel encompasses Kealii Point between Uaoa Bay and Pilale Bay with nearly a 1/2 mile of coastline and no neighbors in sight. The elegant Palm tree-lined driveway leads to the approx. 6,000 sqft, 5 bedroom, 4.5 bathroom home plus a gym. Additionally, there's a 2,000 sqft shop with lots of room for ATVs, jet skis, boards and more. The property is a short twenty-five minute drive from Kahului airport or helicopter to your front door in a matter of minutes. This is the crown jewel of the North Shore.



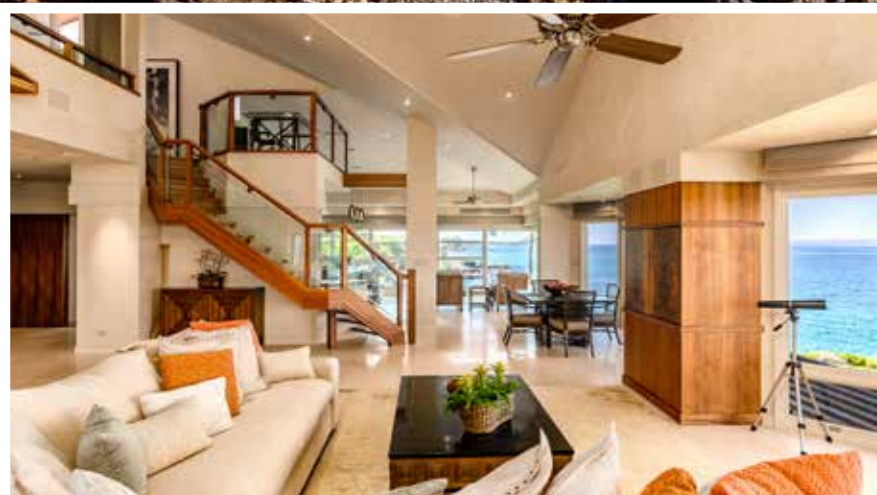
**Tim Stice**  
REALTOR (B) - RB-21556  
808.268.8511 | [timstice@hawaiiilife.com](mailto:timstice@hawaiiilife.com)



**Josh Jerman**  
REALTOR(B), RB-19728  
808.283.2222 | [Josh@HawaiiLife.com](mailto:Josh@HawaiiLife.com)







## ‘ON THE POINT’ AT WAILEA POINT

Wailea, Maui | 4,544 SQFT | 4BR/4.5BA | MLS# 391347 | \$17,770,000

Wailea Point is Maui’s most revered condominium resort property, bar none! Unit 402, a 4,544 s.f. upper-level full-floor unit, was designed by the original developer as his personal residence & has only been offered for sale once previously. The interior design optimizes the 200° dynamic coastal, panoramic ocean & outer island views, enhanced by ever-changing painterly year-round sunsets. The soaring 20+ foot ceilings & custom finishes throughout speak elegance. The ‘velvet to the touch’ Venetian plaster walls complements the sheen of the 24” X 36” polished limestone tile flooring. Culinary expressions are

enhanced by SubZero, Wolf, Gaggenau, Bosch, Fisher-Paykel, Dacor & Blanco Steel Art appliances, framed by almond lacquered cabinetry, a Voguebay glass mosaic back-splash & the specimen quality ‘Capolavoro’ granite island. Custom, book-matched Hawaiian Koa wood cabinetry, floors, doors & beams add warmth throughout. The spacious master & guest master suites offer luxurious en-suite spa-quality baths. Both the den, with its en-suite bath & the spacious office, have compelling ocean views, & may serve as bedrooms 3 & 4. Additionally, there is a 528 s.f. two-car garage with additional storage space. [www.Wailea-Point.com](http://www.Wailea-Point.com)



\$17,770,000



**Robert H. 'Robbie' Dein**

Broker-Owner, ABR, CRS, RSPS | RB-18398  
Maui Real Estate Advisors, LLC  
Direct: 808.250.3564  
Robbie@MauiRealEstateAdvisors.com



Maui's Only Realtor Recognized as a 'Top 100 State of Hawaii Realtor' Among 15,000 + Hawaii Realtors (for 14 Consecutive Years),  
Top 100 Hawaii Realtors Hall of Fame, Hawaii Business Journal 2006–2019

**Kenneth M. 'Ken' Hayo**

Principal Broker-Owner | RB-15529  
Maui Real Estate Advisors, LLC  
Direct: 808.283.8435  
Ken@MauiRealEstateAdvisors.com





\$17,500,000



**DISTINCTIVE HAWAII  
ESTATE HOME**

**Kohanaiki, Big Island | 4BR/4.5BA  
MLS# 649458 | \$17,500,000**

Zak Architecture created a crisp and clean symmetrical plan in their signature contemporary Hawaiian style, as the Douglas Durkin Design team simultaneously developed the rich color palette of the finest architectural and interior design materials. The firm of Metzler Contracting was engaged to bring together these materials and concepts to create this singularly beautiful home. The Owners have wonderful taste and communicated the desire to build a home that captures the look and feel of the Big Island and its culture. Some of the finest craftspeople were called upon to create bespoke furnishings for this very special home in a very special place, executed with an extraordinary vision, level of quality & attention to detail.



**Joni J. Metzler**  
(R) B  
Metzler Realty  
808.640.6832  
Joni@MetzlerRealty.com  
www.MetzlerRealty.com







\$15,800,000



## MAUNA KEA BLUFFS

Kamuela, Big Island | 8,141 SQFT  
45,796 SQFT Land | 4BR/5.2BA  
MLS# 645708 | \$15,800,000

With a Grand prize winning green design by Roth, Kimura architects, this contemporary, custom, luxury residence has 2,750 sqft of outdoor entertaining space, an infinity-edge 25-meter pool, sandy beach area with toddler depth ponds, and jacuzzi hot tub. Amazing mountain and ocean views for winter whale watching. With triple-gated access, it is located at the end of a cul-de-sac at the Bluffs of Mauna Kea on the Kohala Coast. The Bluffs is nestled between two world-class resorts (Mauna Kea and Hapuna) with magnificent beaches easily accessible by walking trails or by golf cart. As owners, the Mauna Kea Resort offers a Platinum club membership with signing privileges and preferential access to resort amenities: golf, beaches, tennis, fitness, salon, spa and dining.



## Yvonne Khouri-Morgan

Realtor Broker

Luxury Kohala Coast Resorts

808.937.4466

Yvonne@alohalife.net

www.HawaiiResortLuxuryHomes.com

www.MaunaLaniRealty.com





\$14,800,000



## 380 LAMA PLACE

Kailua, Oahu | 5,550 SQFT  
13,240 SQFT Land  
MLS# 202027954 | \$14,800,000

Once in a long while, a Hawai'i property with thoughtful design to match its exquisite environment comes to market. The contemporary elegance of 380 Lama Place is rivaled only by the home's stunning Lanikai setting, and punctuated by other-worldly ocean and island views. A private compound of creative, curated design elements and creature comforts on the island of Oahu, featuring a pool with jacuzzi, Covered Private Rooftop Bar, BT45 Kitchen, Climate Controlled Wine Cellar, Commercial Elevator, Tesla Powerwall with 24 pv panels. Estimated completion May 2021. Premium finishes, stunning island views, urban amenities with int'l airport only minutes away.

*\*Images are architectural renderings.*



### Erik Hinshaw

Real Estate Broker, RB-21068  
Hawai'i Life Real Estate Brokers  
Direct: 808.800.6278  
Email: erik@hawaiilife.com



**HAWAI'I LIFE**

**Forbes**  
GLOBAL PROPERTIES





# BRANCHING OUT

---

Using Wood to Personalize  
Your Island Home





**T**extures, colors, and finishes have everchanging frontrunners when it comes to home design and decor. One thing that never goes out of style? Wood. The timeless, natural material has been spotlighted for centuries, creating family heirlooms and inviting interiors to be enjoyed for generations. Here, some ways to introduce and mix woods in your home, today.

If you gravitate toward sleek, modern design, turn to thin, horizontal slats for privacy fencing, room dividers, or feature walls. Using wood to create a dramatic feature wall in your home is a neutral way to warm up all-white style. For neutral and understated installations, look up. Wood-panel ceilings or wood beams can make a vaulted great room feel cozy. Alternatively, carved ceiling installations, doors, and posts, provide a grand introduction and are a feast for the eyes.

It can be daunting to combine a variety of wood tones, but it is just that variation that will make your home design feel effective yet effortless. Warm teak, gray driftwood, and light bamboo all offer neutral tones that can be mixed and matched with a modern color palette. For adjustments, consider stain to bring out the lost beauty in reclaimed wood.

Look for salvaged pieces to add historic significance to your new home. If you like the concept of a unique newel post but don't have a staircase, repurpose it as an art installation, or find several to use as table legs. Try and find out where your salvaged materials were originally used so you can gain more appreciation for historical details that you wood knot know otherwise.

■ *Written by Maresa Giovannini*





**OPENING PAGE:** Carved limestone banana tree wall, kahili tiki torches, and a teak post.

**THESE PAGES FROM LEFT:** Dramatic living room installation. Modern bathroom with live-edge countertop. Oversize carved headboard is a surprising focal point. Carved poolside post.

See more of this featured property and front cover home, presented by Robbie Dein and Ken Hayo, on pages 26 and 27.





## PARK LANE ALA MOANA

Honolulu, Oahu | 4,792 SQFT | 4BR/3.5BA | MLS# 202022019 | \$12,745,000

First-time-to-market, a rarely available, Four Bedroom Park Residence at Park Lane Ala Moana, Honolulu's preeminent luxury development. This Penthouse sized home, situated along the namesake Park Lane walk-way, is for the most discerning buyer. From this home, enjoy lush, tropical landscaping outside your back windows and direct ocean views out front. The interior design and custom upgrades in this

home were done by award-winning luxury design firm Philpotts Interiors and includes custom built-in Walnut cabinetry by Logan White, Master walk-in closet by Poliform, Designer light fixtures by Holly Hunt, Johnathan Browning, Bocci and Boyd, and a world-class audio visual package by Blueprint Audio Visual. *Email agent for property video and 3D Matterport virtual tour.*





**HAWAI'I LIFE**

**Forbes**  
GLOBAL PROPERTIES

**Noel Pietsch Shaw**  
MBA, S. Realtor-Associate, RS-75888  
HAWAI'I LIFE  
EXCLUSIVE MEMBER OF  
FORBES GLOBAL PROPERTIES  
808.221.8889  
noelshaw@hawaiilife.com





\$10,500,000



MAUI GOLD COAST - TWO OCEANFRONT PARCELS

Kihei, Maui | 30,056 SQFT Land  
MLS# 388360 | \$10,500,000

RARE OFFERING.....2 parcels at the very north end of a quiet residential street. Over 205 LINEAR FEET of frontage in this epic beachfront setting!! 2 contiguous lots comprising 30,035 sq.ft.; lot #1 is 18,527 sq.ft. and lot #26 is 11,508 sq.ft. Seller's preference is to sell as one. The land is perched on a small knoll maximizing views of the West Maui Mts and stellar year round sunsets. All utilities to site.



David W. Richardson  
(R)B 10780  
Hawaii Life Real Estate Brokers  
Direct 808-870-9916  
www.MauiOceanfront.com  
Dave@HawaiiLife.com  
HL-1 Director | “Top 2 agent on Maui 2018”



HAWAI'I LIFE

Forbes  
GLOBAL PROPERTIES



\$9,875,000



“KA MAUNA ALOHA”  
JEWEL OF THE MOUNTAIN

Kula, Maui | 7,102 SQFT | 5.28 AC  
3BR/4BA | MLS# 389258 | \$9,875,000

At an ideal elevation of 2,700 ft, you will pass through the private gates and enter a long, tree-lined, driveway to the finest estate in Upcountry Maui. The panoramic bi-coastal views are breathtaking. Peace and serenity await the new owners of this exquisite manor.

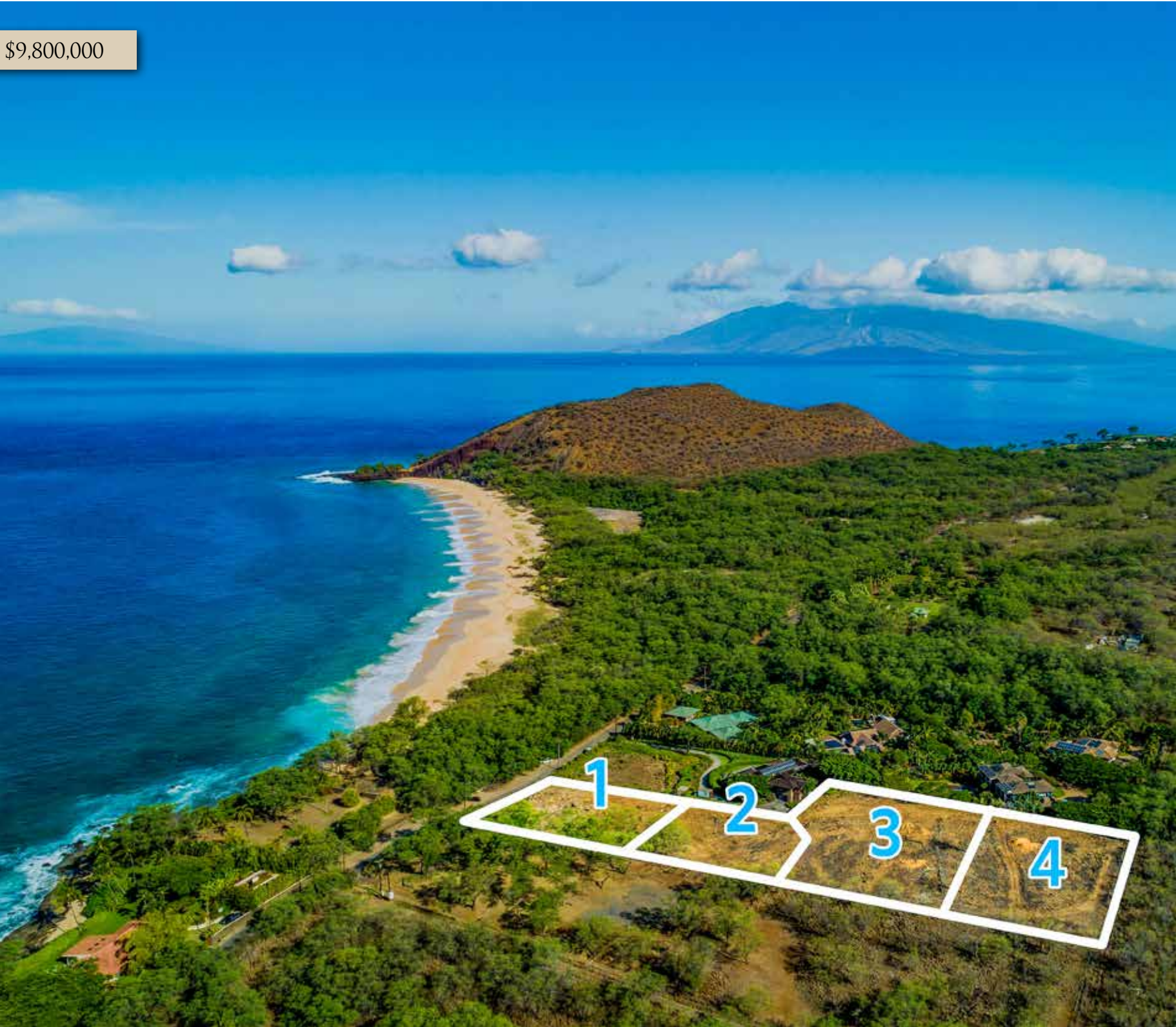


Riette G. Jenkins  
Managing Director of Global Luxury  
Realtor-Broker, RB-17543  
808.870.4073  
riette@waileahawaii.com  
waileahawaii.com





\$9,800,000



BIG BEACH ESTATES

Makena, Maui | 2.79 AC | \$9,800,000

Located on one of the most exclusive and beautiful coastlines in the world, South Maui’s Big Beach Estates offer amazing views and that remote island experience with all of the conveniences of being in town just minutes away. Purchase this property as a 2.79 acre private estate or for its development potential. This is one of the last available parcels in Makena and offers a multitude of development options. The four lots are also available separately at this time, subject to final subdivision approval: Lot 1 \$2.2M, Lot 2 \$2.6M, Lot 3 \$2.8M, and Lot 4 \$3.2M.

[www.bigbeachestatesmaui.com](http://www.bigbeachestatesmaui.com)



**Josh Jerman**  
REALTOR(B), RB-19728  
808.283.2222 | [Josh@HawaiiLife.com](mailto:Josh@HawaiiLife.com)  
[www.josh.hawaiiilife.com](http://www.josh.hawaiiilife.com)



**David W. Richardson**  
REALTOR(B), RB-10780  
808.870.9916 | [Dave@HawaiiLife.com](mailto:Dave@HawaiiLife.com)  
[www.MauiOceanfront.com](http://www.MauiOceanfront.com)  
HL-1 Director | “Top 2 agent on Maui 2018”







\$8,800,000



## LIFE ON LANAI AT HULOPOE BAY

**Hulopoe Bay, Lanai | 4,951 SQFT  
1.2 AC | 4BR/4.5BA | MLS# 387833  
\$8,800,000**

This alluring Estate is perched above Hulopoe Bay and Sweetheart Rock, Puu Pehe. A safe, sustainable sanctuary that feels a world away but is still in the US on the Covid-19 free island of Lanai. With commanding views of Hulopoe Bay, this serene gated estate features a carbon neutral home, mature landscaping and automated pool system. The private residence welcomes you with dramatic views of Maui and Kahoolawe from a living room with disappearing glass walls for the best of indoor-outdoor living. A master suite with private deck, walk-in closet with laundry, and large bath are the epitome of the tropical luxury. Dining and Resort amenities are available at the nearby Four Seasons Resort Lanai. A 40' fishing boat with slip at the Manele Harbor can also be included.



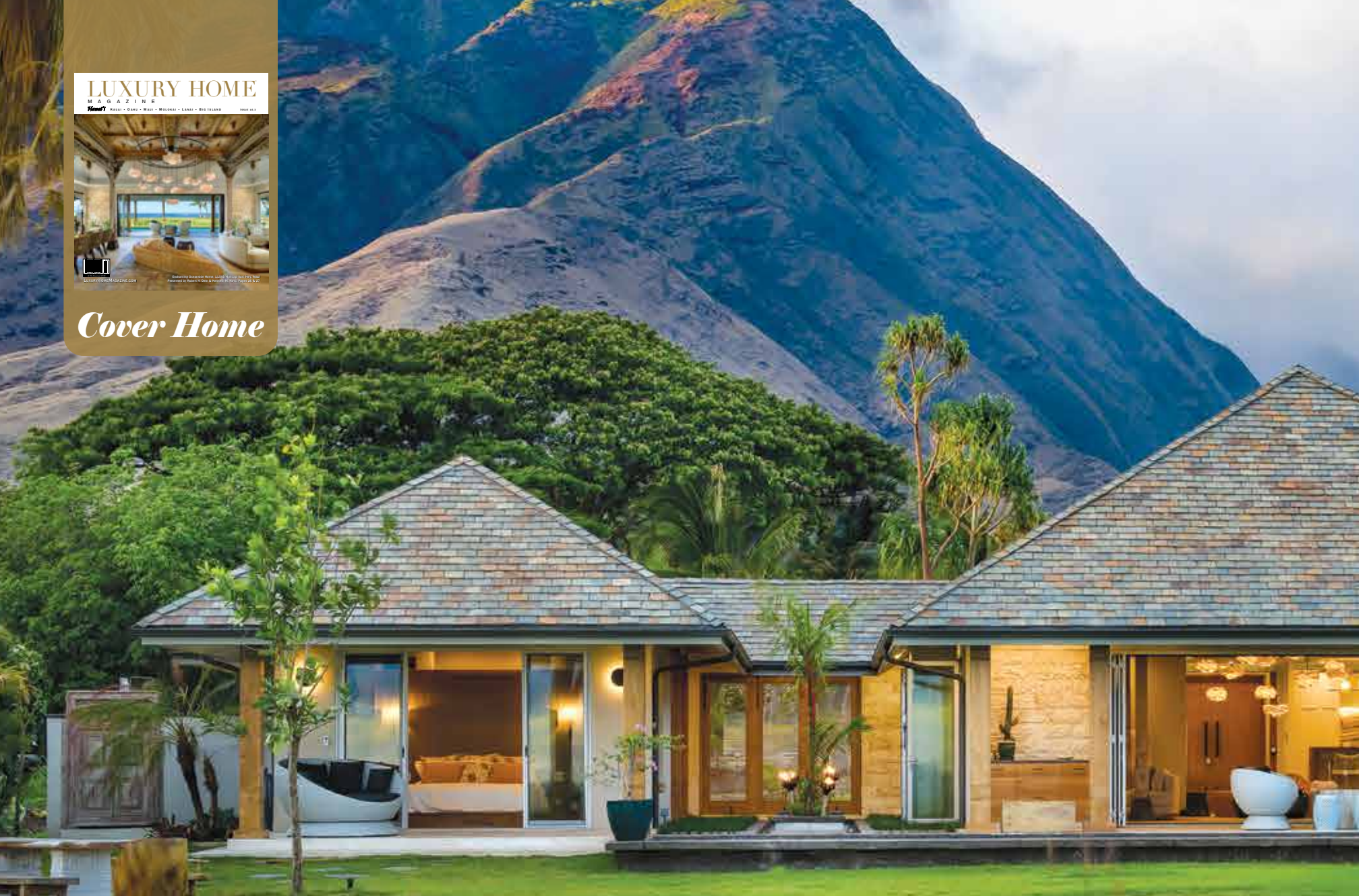
**Nam L. Le Viet**  
R(S)-61810  
Hawaii Life Real Estate Brokers  
Direct: 808.283.9007  
Email: nam@mauisold.com  
Web: mauisold.com



**Mary Anne Fitch**  
R(B)-15747  
Hawaii Life Real Estate Brokers  
Direct: 808.250.1583  
Email: sold@maui.net  
Web: soldmaui.com







## OCEANSIDE RESIDENTIAL WORK OF ART

Olowalu, Maui | 2,562 SQFT | .54 AC | 3BR/3.5BA | MLS# 388443 | \$7,995,000

This Olowalu residence, fronting conservation land and the beach, possesses the raw experience of the 'mana of Maui' through its world-class architecture & interior design. The compelling presence of the indigo blue Pacific, punctuated by the cerulean horizon, is wonderfully distracting as you pass through the hand-carved teak 'Menehune' columns & pivotal front doors. Velvety plaster walls rise from the etched acid-washed marble floors along open-air corridors with hand-carved limestone Banana Tree wall reliefs, Kahili Tiki torches, waterways & gardens, Birdcage pendant lighting & Peacock wall sconces! Enhancing the

great room, an intricately carved teak 'Javanese Joglo' is a spirit-lifting, museum-like wonder. Delight in the artistry throughout; a translucent Cloud chandelier made of zippers, antique Obis, silk rugs, petrified wood, painterly book-matched marble back-splashes, glazed lava-stone kitchen counters, along with soft-close wood cabinetry & jacquard silk & fine-glass wall treatments. The marble & granite master bath mosaic, iron & bronze entry gates mimic the nearby 150-year-old Monkeypod trees. Rarely will you come upon an opportunity to choose to dwell in such a peaceful Maui residence! [www.Olowalu.info](http://www.Olowalu.info)



\$7,995,000



### Robert H. 'Robbie' Dein

Broker-Owner, ABR, CRS, RSPS | RB-18398  
Maui Real Estate Advisors, LLC  
Direct: 808.250.3564  
Robbie@MauiRealEstateAdvisors.com



Maui's Only Realtor Recognized as a 'Top 100 State of Hawaii Realtor' Among 15,000 + Hawaii Realtors (for 14 Consecutive Years),  
Top 100 Hawaii Realtors Hall of Fame, Hawaii Business Journal 2006–2019

### Kenneth M. 'Ken' Hayo

Principal Broker-Owner | RB-15529  
Maui Real Estate Advisors, LLC  
Direct: 808.283.8435  
Ken@MauiRealEstateAdvisors.com







## 33 HANA HWY

Paia, Maui | 2,260 SQFT | 27,913 SQFT Land | 5BR/3BA | MLS# 390712 | \$8,500,000

Located in the timeless beachfront community of Paia sits a modern, stylish private beach home, with **170 feet** of sandy beachfront.

Enter through a private gate to this .67 of an acre compound. Once inside, your world shifts and slows down, as the transition to beach life begins. The main home is a modern and comfortable 4,300 sf beach home with a 1,000 sf Ohana.

Three miles of beach walks right from your front door. The covered lanai has sweeping Pacific Ocean views and is complemented by modern and cozy living areas, including a chef-style kitchen, clean white marble bathrooms, and a 3 car garage. This is a rare opportunity to be right in the heart of Paia and on a world-class white sand beach. Beautifully furnished and totally turnkey, just bring your bathing suit and surfboard.





\$8,500,000



**COLDWELL BANKER** | ISLAND PROPERTIES



**Rhonda Smith Sanchez**

RB-22953

Maui's North Shore Specialist

808.205.2175

Rhonda@RhondaMaui.com

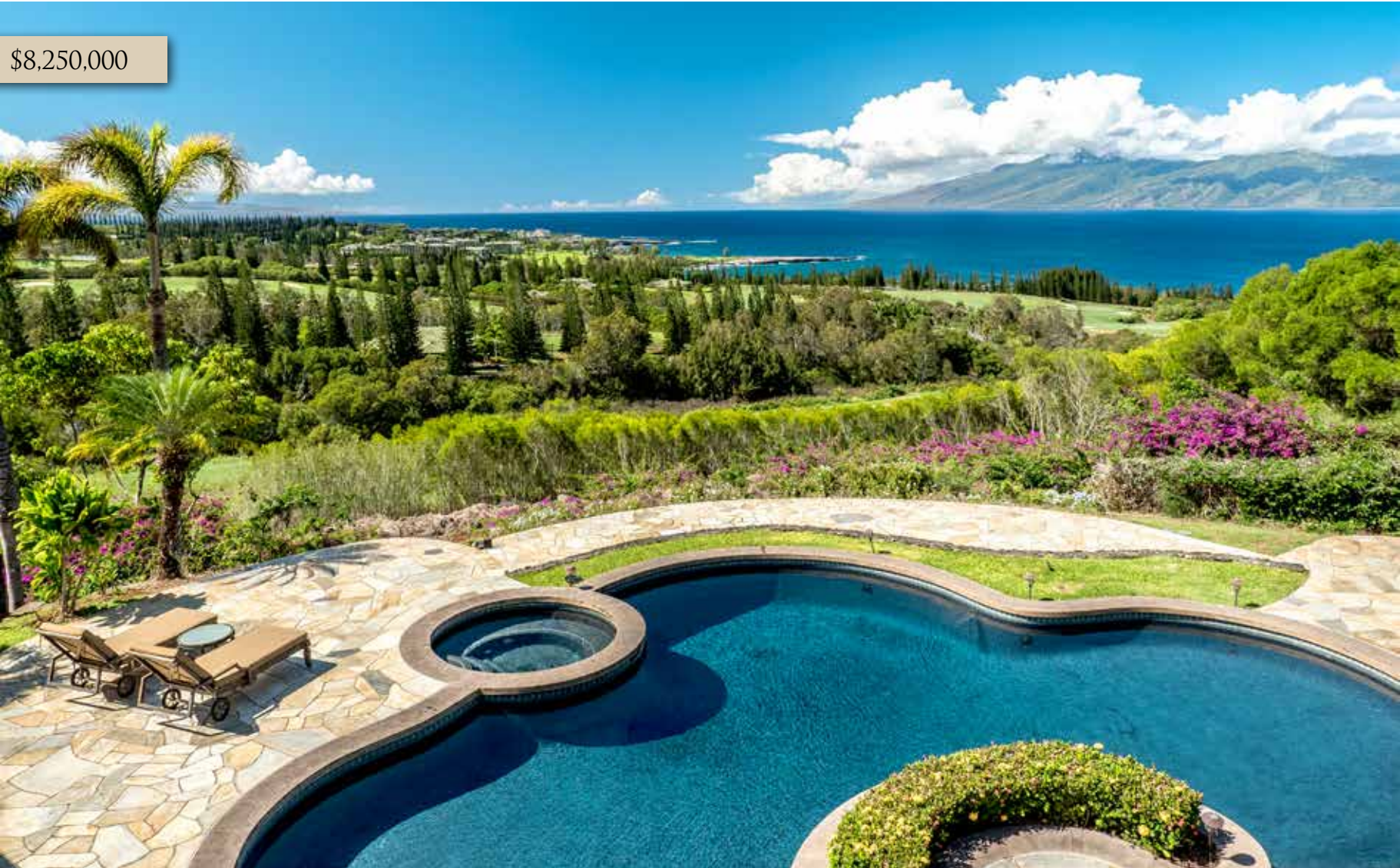
Rhondamaui.com



LuxuryHomeMagazine.com



\$8,250,000



218 PLANTATION CLUB DR

Kapalua, Maui | 7,267 SQFT | 2.19 AC  
5BR/5.5BA | MLS# 388247 | \$8,250,000

Experience the majestic year-round sunset, ocean and island views of this magnificent home. This incredible residence sits on 2.19 acres of prime real estate perched above the 18th fairway over the renowned Plantation Golf Course at Kapalua. These gorgeous views can be enjoyed from every room and overlook five fairways to the ocean. Offering over 7,200 square feet of luxurious living space with five bedrooms and five and half bathrooms, it also features a glass fronted wine cellar, gourmet kitchen, exquisite dining room, and media room with sound system, including bar.  
[www.MauiHomeSales.com/218Plantation](http://www.MauiHomeSales.com/218Plantation)



Robert R. Myers  
REALTOR (S), SRS  
Tel: 808.283.3067  
Robert@MauiHomeSales.com  
[www.MauiHomeSales.com](http://www.MauiHomeSales.com)



For all the Maui listings check out my website:  
**[www.MauiHomeSales.com](http://www.MauiHomeSales.com)**  
Including Interactive Maps of Kaanapali, Kapalua and Wailea

**COLDWELL BANKER**  
ISLAND PROPERTIES





\$7,888,000



## SKY RESIDENCE AT PARK LANE ALA MOANA

Honolulu, Oahu | 3,058 SQFT | 3BR/3.5BA  
MLS# 202028244 | \$7,888,000

With direct ocean views, incredible mountain views and fronting Ala Moana Beach Park, Park Lane #7705 represent a single-family home experience in the sky. The quintessential “U-shape” design of the Sky Residences envelops a deep covered lanai, making the outdoor space a true extension of the home. This home includes upgrades including window coverings, luxury designer paint, designer closet systems and cabinetry, 2 parking stalls and a large storage room. Park Lane is a visionary project developed by the MacNaughton Group & Kobayashi Group on the ocean side of Ala Moana Center in Honolulu.



**HAWAI'I LIFE**

**Forbes**  
GLOBAL PROPERTIES

**Noel Pietsch Shaw**

MBA, S. Realtor-Associate, RS-75888

HAWAI'I LIFE

EXCLUSIVE MEMBER OF

FORBES GLOBAL PROPERTIES

808.221.8889

noelshaw@hawaiilife.com





# YOUR SANCTUARY ON THE KONA COAST



## HOME HAPPENS HERE.

Nestled on the idyllic Kona coastline of the Big Island of Hawai'i, the exclusive community of Kohanaiki features a 67,000-square-foot private clubhouse & spa, 18-hole Rees Jones golf course, adventure team, beach club, organic community farm and exquisite dining, all within 450 acres of oceanfront luxury estates. Homes designed by renowned architects like Shay Zak, Khoi Le and Jim McLaughlin are inspired by the rugged landscape of ancient lava flows, panoramic ocean views, and the ever-present Kona sunshine. Discover your new sanctuary at Kohanaiki. **From \$2.8 Million.**

Access to and use of the golf course and other private amenities at Kohanaiki Club is available only to members of the Kohanaiki Club and are subject to the payment of additional fees. Membership to the Kohanaiki Club is by invitation only and is not included with a purchase of a property. No representation or warranty is made regarding whether a purchaser will qualify for such membership. Obtain the Property Report or its equivalent required by Federal and State law and read it before signing anything. No federal or state agency has judged the merits or value, if any, of the property shown in this brochure. WARNING: THE CALIFORNIA DEPARTMENT OF REAL ESTATE HAS NOT INSPECTED, EXAMINED, OR QUALIFIED THIS OFFERING. Kohanaiki Realty LLC, 73-2055 Ala Kohanaiki, Kailua-Kona, HI 96740.







Call for your private tour  
(888) 406-1256 | [kohanaiki.com/kona](http://kohanaiki.com/kona)



\$7,659,000



WALEA POINT,  
RARE DOUBLE UNIT

Wailea, Maui | 4BR/6BA  
4,821 SQFT | MLS# 389789 | \$7,659,000

Recently renovated, this rare double-condo, ocean-view residence has artisan-quality stone, custom tile & warm hardwoods throughout. Each unique room offers views & vistas that delight. Wailea Point is bordered by the Four Seasons to the right and the Fairmont Kea Lani to the left. Just steps away are The Shops at Wailea and fabulous dining.



Riette G. Jenkins  
Managing Director of Global Luxury  
Realtor-Broker, RB-17543  
808.870.4073  
riette@waileahawaii.com  
waileahawaii.com







LOT 35 AT KOHANAIKI

Kohanaiki, Big Island | 1.28 AC  
MLS# 637665 | \$6,250,000

Overlooking the 14th and 15th holes at the Kohanaiki Golf Club, Lot 35 offers stunning golf course and ocean views. The residential community and Kohanaiki Club are built around luxury, sustainability and world-class amenities. The Kohanaiki Club is a private equity club and membership is by invitation only to Kohanaiki Property Owners.



Joni J. Metzler  
(R) B  
Metzler Realty  
808.640.6832  
Joni@MetzlerRealty.com  
www.MetzlerRealty.com







## COASTAL RETREAT IN DIAMOND HEAD

Diamond Head, Oahu | 3,419 SQFT  
4BR/3BA | MLS# 202018365 | \$5,900,000

This exquisite residence, designed by award winning architect James McPeak, is the pinnacle of modern elegance. Moments from the beach, and world class surf, this two-story home offers a relaxed tropical lifestyle with luxurious amenities and coastal ocean views. The home is comprised of a generous four-bedroom floor plan with high quality craftsmanship, rich wood floors, Venetian plaster interior walls, and a soothing color palette. The spacious living room features high ceilings, open floor plan that seamlessly transitions between indoors and out. Special features include salt water pool with swim jets, spa and outdoor shower.



**Vicki Hossellman**

RA|RS-38718  
Luxury Property Specialist  
808.351.3833  
Vickih@cbpacific.com  
www.VickiHossellman.com



**COLDWELL BANKER**  
ISLAND PROPERTIES



\$5,499,000



## 4324 WAILINA STREET

Kihei, Maui | 3,733 SQFT  
12,184 SQFT Land | 4BR/4BA  
MLS# 391262 | \$5,499,000

It's all about quality of life, and this home in the gated community of Wailea Golf Vistas provides all that and more. A commanding view down the 16th fairway yet elevated to provide privacy, the home was designed to maximize views and retain a sense of solitude. One-level living with bonus spaces on other levels. Fleetwood doors open to a covered lanai with pool and spa to soak away aches and pains under the stars with the lights of Wailea as a backdrop. Smart lighting and alarm system and 41 photovoltaic panels on a net metering system is efficient and easy to control. I am proud to represent this exceptional home for the first time on the market.



**HAWAII LIFE**

**Forbes**  
GLOBAL PROPERTIES

**David W. Richardson**

(R)B 10780

Hawaii Life Real Estate Brokers

Direct 808-870-9916

[www.MauiOceanfront.com](http://www.MauiOceanfront.com)

[Dave@HawaiiLife.com](mailto:Dave@HawaiiLife.com)

HL-1 Director | "Top 2 agent on Maui 2018"





\$5,200,000



PRIVACY AND  
OCEAN VIEWS

Lahaina, Maui | 4,039 SQFT  
7.1 AC | 5BR/5.5BA  
MLS# 390708 | \$5,200,000

This exclusive gated 7-acre property offers a secluded luxury home along with a car enthusiast's dream...a brand new 6-car garage complete with a photovoltaic system. Tucked beneath the West Maui Mountains, this extraordinary home has stunning ocean views. Constructed with utmost craftsmanship, this single level home with 4,039 sq. ft. has 5 bedrooms and 5.5 baths. The chef's kitchen features black absolute granite countertops, a 6 burner Wolf cooktop, double ovens, a Sub- Zero refrigerator and a walk-in pantry. You've never seen such privacy in Launiupoko and only minutes to shops, restaurants, beaches & golf.



Jan Bryan  
R(S) 69056  
Coldwell Banker Island Properties  
808.214.7837  
Jan@JanBryan.com  
www.JanBryan.com



COLDWELL BANKER  
ISLAND PROPERTIES





\$4,950,000

## KANEOHE BAYFRONT ESTATE

Kaneohe, Oahu | 6,005 SQFT  
16,817 SQFT Land | 4BR/6.5BA  
MLS# 202108830 | \$4,950,000

Nestled on a quiet cul-de-sac adjacent to Kaneohe Yacht Club, this stunning residence was designed for entertaining. The 6,000+SF of living space centers around a striking spiral staircase that transcends three floors overlooking Kaneohe Bay. There are two spacious master bedrooms on the third floor, an open concept living room, dining area, kitchen, and powder room on the main floor, and a great room with wet bar, study, guest bedroom, and private in-law suite. The expansive lawn flows to a bayside pavilion with infinity edge pool overlooking a secluded lagoon with boat dock and ramp.



### Dave Moyer

Principal Broker | Realtor  
RB-18853  
Hawaii Sands Realty  
dmoyer@hawaiisands.com  
808.379.3016



**HAWAII SANDS REALTY**  
*Portfolio Properties*  
RB-21815

### Alex Watson

Partner | Realtor-Associate  
RS-78706  
Hawaii Sands Realty  
awatson@hawaiisands.com  
808.725.2521



Luxury Real Estate & Property Management





*live who you are*

# Corcoran Pacific has your home in Hawaii.

Locally owned and operated since 2005.  
A tradition of excellence and impeccable service.

*corcoran*

PACIFIC PROPERTIES

KAUAI | OAHU | MAUI | HAWAII ISLAND | [CORCORANPACIFIC.COM](https://www.corcoranpacific.com)

©2020 Corcoran Group LLC. All rights reserved. Corcoran® and the Corcoran Logo are registered service marks owned by Corcoran Group LLC. Corcoran Group LLC fully supports the principles of the Fair Housing Act and the Equal Opportunity Act. Each Office is independently owned and operated.



\$4,500,000



RARE MAUNA LANI  
POINT, #E204

Mauna Lani Resort, Big Island | 1,988 SQFT  
3BR/3BA | MLS# 648813 | \$4,500,000

Located in the highly desirable E building of the Mauna Lani Point, in the famed Mauna Lani Resort. Directly facing west to the ocean and the Mauna Lani South Golf Course renowned for the views of the ocean, coastline, Maui and the surrounding mountains. Once on the 550 square feet lanai you will undoubtedly understand why the Mauna Lani South's signature hole #15 is one of the most photographed golf holes in the world. To obtain access to another 3/3 like E-204 you may have to wait a few more years; the last one available and sold was in 2017.

corcoran  
PACIFIC PROPERTIES

THE REBECCA K. COLLECTION  
UNPARALLELED REPRESENTATION. THE FINEST HAWAII PROPERTIES.



Rebecca Keliioomalulu

President and Founder of The Rebecca K. Collection  
Vice President, Corcoran Pacific Properties Platinum Circle  
Certified Luxury Home Marketing Specialist  
Hawaii Business Top 100 Hall of Fame  
808.895.1156  
rebeccak@corcoranpacific.com  
www.Corcoranpacific.com





\$4,320,000



PARK LANE ALA MOANA

Honolulu, Oahu | 1,942 SQFT | 2BR/2BA  
MLS# 202109130 | \$4,320,000

NEW turnkey listing at Park Lane, including stunning interior furnishing by the Henderson Design Group that bring this space to life and accents the masterful essence that is Park Lane. Located on the 6th floor of Park Lane, this Courtyard Residence features high-volume 10-ft ceilings, and an expansive lanai with ocean views. Located in building #3, this unit is effortlessly close to the elegant lobby, pool, gym, theater & concierge desk. This visionary development offers expansive indoor-outdoor-living similar to the most sought-after island homes combined with the services, amenities, security and ease of ownership of a luxury condominium development.



Noel Pietsch Shaw  
MBA, S. Realtor-Associate, RS-75888  
HAWAII LIFE  
EXCLUSIVE MEMBER OF  
FORBES GLOBAL PROPERTIES  
808.221.8889  
noelshaw@hawaiiilife.com



HAWAII LIFE

Forbes  
GLOBAL PROPERTIES



IN ESCROW



SOLD - 49 BLACK SANDS BEACH

Mauna Lani Resort, Big Island | 4,218 SQFT  
4BR | MLS# 640094 | \$3,995,000

Centrally located in the luxurious Mauna Lani Resort. The gated community of 49 Black Sands beach is just a few steps from the Black Sand Beach clubhouse with its spa, pool, kayak storage, gathering pavilion, fitness room, tennis court and the black sand beach. Enough room for the whole family to snuggle yet have alone space. 4 Bedrooms, 4,218 Sq.Ft. Great set up for multi-generational family living. Separate in-law or guest suite. Mountain, golf course and ocean views. To see additional listings please visit: [betterislandlifestyle.com](http://betterislandlifestyle.com)

DISTINCTIVE  
COLLECTION  
by  
**BetterHomes**  
and Gardens  
REAL ESTATE  
ISLAND LIFESTYLE

**Eileen Lacerte**  
REALTOR® Broker/Owner  
808.989.1862  
[eileen@betterislandlifestyle.com](mailto:eileen@betterislandlifestyle.com)







## OCEAN VIEWS!

**Haiku, Maui | 4,470 SQFT | 2.118 AC | 4BR/2.5BA | MLS# 390366 | \$4,200,000**

Amazing ocean views on 330 W Kuiaha Rd! At last, a Hawaiian Plantation home, built and designed with a taste of sophistication, esteem for the outdoors, and a calming warmth of home. 2.1 acres complete with a large barn and cottage. This beautiful 4-bedroom, ocean view home celebrates a brand-new remodeled

chef's kitchen, entire home dehumidifier system, hot water on demand, and a 51-foot lap pool. The land provides abundantly with oranges, avocados, flowers, and rental income. All structures are newly remodeled, new appliances, painted, and well maintained.



\$4,200,000



**COLDWELL BANKER** | ISLAND PROPERTIES



**Rhonda Smith Sanchez**

RB-22953

Maui's North Shore Specialist

808.205.2175

[Rhonda@RhondaMaui.com](mailto:Rhonda@RhondaMaui.com)

[Rhondamaui.com](http://Rhondamaui.com)





\$3,900,000



YOUR BEACH  
HOUSE AT  
KUKUI'ULA

Kukui'ula, Kauai | 2,600 SQFT  
10,104 SQFT Land | 3BR/3BA  
MLS# 639704 | \$3,900,000

4980 MAHUA ST: This ocean view residence and guest cottage are set within Kukui'ula's Kaulu neighborhood, a short walk from the Club at Kukui'ula, Shops at Kukui'ula and the beach. Curb appeal here is instantaneous. Covered lanai spaces set a welcoming tone and display ever-present ocean and garden views.

Framed by a tropical landscape palette, the property conveys a warm and gracious feeling. Inside, well-appointed rooms are styled in a classic beach house flare. Make this your Kaua'i base camp and enjoy the world-class amenities membership to the Club at Kukui'ula afford.

View the video at [SiroisKauai.com](http://SiroisKauai.com).



**Hannah Sirois**  
R(B), Partner  
Corcoran Pacific Properties  
808.639.2367  
[Hannah@KauaiHP.com](mailto:Hannah@KauaiHP.com)  
[SiroisKauai.com](http://SiroisKauai.com)







\$3,880,000

# 1441 FRONT STREET

Lahaina, Maui | 1,988 SQFT  
 6,705+ SQFT Land | 3BR/3BA  
 MLS# 388229 | \$3,880,000

Oceanfront Property with unsurpassed views! This home is a developer's dream. Located on the highly renowned Front Street with access to all shopping, restaurants, art galleries and Lahaina Lifestyle. This offering also now includes the adjacent 1449 Front St parcel that is 4,000+ sq ft for over 6,705 sq ft of oceanfront land.



For all the Maui listings check out my website:  
**www.MauiHomeSales.com**  
 Including Interactive Maps of Kaanapali, Kapalua and Wailea

**Robert R. Myers**  
 REALTOR (S), SRS  
 Tel: 808.283.3067  
 Robert@MauiHomeSales.com  
[www.MauiHomeSales.com](http://www.MauiHomeSales.com)







Breathing room with a view.

HOKULI'A

Contact the Hokuli'a Hawai'i Life Sales team

81-6636 Pu'u Ohau Pl., Kealahou, HI 96750 | (808) 731-4354 | [Hokulia@HawaiiLife.com](mailto:Hokulia@HawaiiLife.com)

[Hokulia.com](http://Hokulia.com)





***Experience Hokuli'a***, the Kona Coast's most spacious and private residential club community designed for active, health-conscious adventurers and avid golfers. At Hokuli'a, you'll enjoy unsurpassed resort amenities at the exclusive Club at Hokuli'a, a world-class Jack Nicklaus Signature golf course, and plenty of space to gather, celebrate or simply unwind.

Hokuli'a announces the release of Phase Two Nalu Kai real estate, comprised of 20 premier oceanside lots with commanding views and direct ocean access spanning three miles along the shoreline.





# KONA OCEANFRONT PARADISE

Kona, Big Island | 2,418 SQFT | 9,050 SQFT Land | 3BR/4BA | MLS# 650068 | \$3,975,000

Relax on your private beach at this stunning, oceanfront luxury estate. This one-of-a-kind home with incredible ocean views and direct beach access offers the epitome of island living. This two-story custom rebuild was finished in 2016 and has been immaculately maintained. Featuring three master bedrooms, four baths, a private pool, and large lanais with glass-protected balconies on the water, you enjoy unobstructed ocean views and breezes from this true slice of paradise set between Magic Sands and Kahaluu Beach on the word famous Alii Drive in Kailua Kona.

Snorkel, swim, paddle board, bike, run and walk directly from this incredible property tucked privately behind custom rock walls with touchpad gates, a multi-car parking pad area with clicker operated gate. Float in your own solar heated private pool while watching dolphins, turtles, mantas, humpbacks, yellow tangs and more swimming just off the lanai. The property's private beach and coconut tree hung hammock is the perfect place to recharge your senses with ocean breezes and incredible sunsets.





\$3,975,000



**Marco A. Silva**  
REALTOR®, Broker, RB-20599  
808.557.8921 | [Marco@KonaLuxuryRealEstate.com](mailto:Marco@KonaLuxuryRealEstate.com)  
[KonaLuxuryRealEstate.com](http://KonaLuxuryRealEstate.com)  
Certified Luxury Home Marketing Specialist®  
Certified Residential Specialist | Certified Negotiation Expert  
2019 Top PERFORMER® Hawaii Business Magazine  
2017 Top 100 REALTOR® Hawaii Business Magazine  
2016 Top 100 REALTOR® Hawaii Business Magazine





\$3,795,000



APA'APA'A HEIGHTS

Mauna Kea Resort, Big Island  
3,268 SQFT | 20,732 SQFT Land  
4BR/4BA | MLS# 649074 | \$3,795,000

Exclusive enclave of 7 estate residences perched overlooking Hapuna Golf Course holes 3 and 15. Premium front row with jaw dropping unobstructed ocean and sunset views. Single level, furnished, 4 bedroom with 4 en-suite full baths including separate Ohana. Tile flooring throughout, media room, pocket doors, automated motorized UV window treatments, Sub-Zero and Wolf appliances, Tesla EV charger, 70 owned solar panels, three zone central air, perimeter fencing, gunite infinity pool with jetted spa. Outstanding homeowner benefits when joining The Club at Mauna Kea with 2 world class golf courses, tennis facility, restaurants, 3 swimming pools, 2 fitness centers, and 2 spas.



Renée H. Kraft  
REALTOR® RB-23004  
Better Homes and Gardens Real Estate | Island Lifestyle  
808.345.2108  
renee@searchhawaiiproperty.com  
www.SearchHawaiiProperty.com







\$3,495,000



## VILLA DE KAIMANU

Kihei, Maui | 3,276 SQFT  
2.06 AC | 2BR/3.5BA  
MLS# 390252 | \$3,495,000

This beautiful estate surrounded by lush tropical landscaping is one of 9 hidden gems located in the exclusive gated community of Kaimanu Estates. A Mediterranean inspired villa with ocean, mountain views and surrounded with an abundance of tropical fruit trees. The private oasis garden is close to an in-ground pool and two ponds with Koi fish and lilies. The home has a bright and spacious living area with a lower sitting space and a great entertainment patio equipped with an outside kitchen with a real pizza oven. This is the lowest priced 2+ acre estate you will find in all of South Maui!



**KELLERWILLIAMS.**  
REALTY MAUI

KELLERWILLIAMS  
*Luxury*  
INTERNATIONAL

**Yvienne M. Peterson**  
REALTOR®(S) RS57071 | 22 years Licensed in Hawaii  
Keller Williams Realty Maui  
Premier Global Partners Hawaii  
Founder | Lead Agent  
808.344.5575  
Yvienne@PremierGlobalPartners.com





\$3,199,000



ONE ALA MOANA  
PH #2200

Ala Moana, Oahu | 2,651 SQFT | 3BR/3BA  
MLS# 202025153 | \$3,199,000

This luxurious penthouse offers breathtaking ocean and mountain views from an expansive, open floor plan with 10-ft high ceilings. This 3-bed, 3-bath home features his/hers walk-in closets, a large wine chiller, convection and steam ovens, laundry room with a separate service entrance, and 2 parking spots. This property truly feels like a single-family home. Enjoy the resort-like amenities such as a rooftop terrace, golf room, spa treatment, theater room, gym, infinity-pool and hot tub, several barbecue areas, jogging paths, and more. ONE Ala Moana is conveniently located above Ala Moana Center and just minutes away from restaurants, entertainment, and Ala Moana Beach Park.



**Esther H. Park**  
REALTOR®, Senior Vice President  
ABR CHMS CRS GRI SRS, RB-21002  
808.489.6733  
esther.park@sothebysrealty.com  
한국어 서비스 가능



List

**Sotheby's**  
INTERNATIONAL REALTY



\$3,000,000



BEAUTIFUL KALEHUA  
O MAKENA

Makena, Maui  
Lot 4 | MLS# 390567 | \$3,000,000  
Lot 5 | MLS# 390626 | \$3,000,000

- ♦ Incredible opportunity to own a custom home site next to Makena Golf & Beach Club\*
- ♦ Breathtaking Ocean and Mountain Views
- ♦ Within a short stroll to Maluaka's white sand beach
- ♦ Only 2 Lots left of this captivating 10 lot subdivision
- ♦ Ready to build house site, with utilities and graded lots completed
- ♦ Architectural Plans available
- ♦ Enjoy Endless Sunsets from your new Makena Residence

\*Currently, purchasers of these lots are eligible to apply for membership in the exclusive Makena Golf & Beach Club (additional fee, subject to approval) where once approved would provide access to adjacent private club with fine dining, fitness center, spa, pool, beach activities and the best 18-hole golf course in perhaps all of Hawaii.



HAWAII LIFE

Forbes  
GLOBAL PROPERTIES

David W. Richardson  
(R)B 10780

Hawaii Life Real Estate Brokers  
Direct 808-870-9916  
www.MauiOceanfront.com  
Dave@HawaiiLife.com

HL-1 Director | "Top 2 agent on Maui 2018"





\$2,995,000



## KO OLINA RESORT GROUND FLOOR LUXURY

**Kapolei, Oahu | 1,650 SQFT  
3BR/3BA | MLS# 202107730 | \$2,995,000**

Introducing a truly unique opportunity to own a never-before-listed exclusive ground floor luxury villa in the Ocean Tower at the Beach Villas at Ko Olina on West Oahu. This legal short-term vacation villa is one of the largest 3-bedroom floor plans at Beach Villas, with more than 1,900 sq. ft. including outdoor covered lanai space. This professionally managed condo is the **ONLY** Villa in the 247-unit project with 10' high ceilings, a private parking stall right outside the back door, frontage on the water feature and koi pond on the ground floor. Walk right out to beach and amenities. 2021 updates by professional interior designer. \$155k+ in 2021 rental revenue!



### Munro Murdock

MBA, R(B) #RB-22056  
Love Hawaii Realty  
808.492.6242  
Munro@LoveHawaiiRealty.com  
www.LoveHawaiiRealty.com



**LOVE HAWAII**  
REALTY





\$2,995,000



KAANAPALI ALII #2-205

Lahaina, Maui | 1,650 SQFT  
2BR/2BA | MLS# 391276 | \$2,995,000

Enjoy the full Kaanapali Beach experience in this luxury 2 bed/2 bath large corner suite. Ocean & sunset views from the living area, master bedroom and lanai. Tiki torches light the inner courtyard in the evening. This Suite is equipped with large full kitchen, Tommy Bahama & Thomasville furniture, 3 large flat-screen TVs, and Asian antiques throughout. Guest bedroom has 2 queen beds + sleeper sofa. Amenities include tennis courts, state-of-the-art workout facility, pools, jacuzzi, BBQs, clubhouse, beach concierge, bellhop, security and on-site parking. Located on world-famous Kaanapali Beach and just steps away from world-class shopping, dining and two golf courses. [www.mauihomesales.com/KaanapaliAlii225](http://www.mauihomesales.com/KaanapaliAlii225)



For all the Maui listings check out my website:  
**[www.MauiHomeSales.com](http://www.MauiHomeSales.com)**  
Including Interactive Maps of Kaanapali, Kapalua and Wailea

Robert R. Myers  
REALTOR (S), SRS  
Tel: 808.283.3067  
[Robert@MauiHomeSales.com](mailto:Robert@MauiHomeSales.com)  
[www.MauiHomeSales.com](http://www.MauiHomeSales.com)





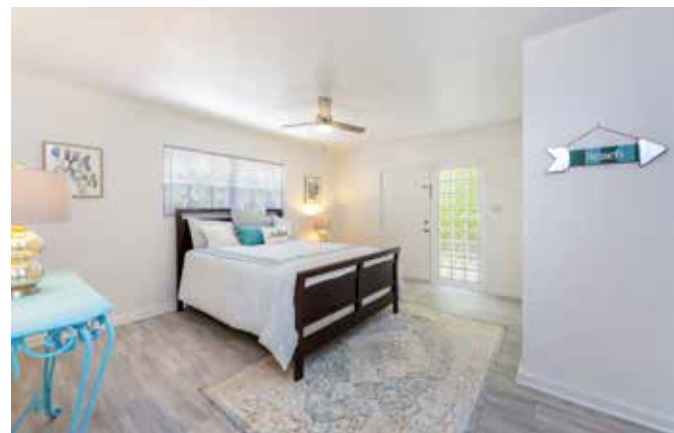
\$2,750,000



## 3030 KIELE AVENUE— DIAMOND HEAD

Honolulu, Oahu | 3,600 SQFT  
5,100 SQFT Land | 6BR/6BA  
MLS# 202104856 | \$2,750,000

Nestled at the footsteps of Diamond Head & one block from the Pacific Ocean sits 3030 Kiele Avenue, a newly updated home with an island-contemporary design. Fully renovated in 2021 with modern upgrades including a Chef's kitchen with lacquer cabinetry, stainless appliances & walk-in pantry, an open-concept living area combining kitchen, dining, indoor & outdoor living spaces, & an ultra-flexible 6 bedroom, 6 bath, 3,600 sq.ft. floor plan with multiple entrances & space for 9-car parking. Shrouded in private landscaping with old growth Starfruit, Apple Banana, & Mountain Apple trees on property, enjoy a sustainable lifestyle while relaxing in the shade; ocean access is just across the street, perfect for a morning swim or surf session, with sandy beaches, shops, restaurants, & entertainment within blocks.



## Sachi Braden

Sachi Hawaii  
CEO, Founder, & Principal Broker | RB-16308  
808.596.8801  
info@sachihawaii.com | www.sachihawaii.com

ハワイの不動産売買、別荘管理、賃貸管理に関するお問合せは日本語どうぞ  
サチハワイ総合不動産会社ーハワイ高級物件のエキスパート



Office License  
RB-18153







\$2,395,000



## MAKENA RETREAT

**Makena, Maui | 2,143 SQFT**  
**6.18 AC | 3BR/2.5BA**  
**MLS# 391075 | \$2,395,000**

Enjoy one of the sunniest year-round climates in all the Hawaiian islands in the exclusive neighborhood of Makena, South Maui. This tropically vibrant, low-density area is tucked away, yet minutes from world class beaches, dive spots, water sports, golfing, restaurants, resorts, shopping and more. Na Hale O Makena is an excellent choice for those who will appreciate the ease of resort style living within a private community of only 40 apartment-style residences on 6+ acres of beautifully landscaped grounds. This turn-key ground floor unit with ocean views has just completed an impressive \$500k+ remodel - be sure to watch the video + 3D tour of this immaculate residence.



  
**HAWAI'I LIFE**

**Forbes**  
GLOBAL PROPERTIES

**Whitney Wolfe**  
 REALTOR Associate, RA-77486  
 808.938.1388  
 whitneywolfe@hawaiilife.com





\$1,690,000



WAIKIKI SHORE #506

Waikiki Beach, Oahu | 706 SQFT  
1BR/1BA | MLS# 202006843 | \$1,690,000

Step from the ground floor of this building right onto the white sands of Waikiki Beach! This beautiful ocean-view unit in one of Waikiki’s most desirable condominium buildings is fully-renovated and move-in-ready. The large living room and kitchen have views of the blue Pacific Ocean during the day and of city lights at night. Waikiki Shore is the only condominium building on Waikiki Beach—you can wake up and check surf conditions right from your bed. Waikiki Shore #506 is sold fully furnished and includes a secure walk-in storage unit on the same floor. When you are not enjoying the property yourself, earn income renting it through the hotel rental program. This is your home in paradise!



Gretchen Booma  
RS-72759  
808.469.7292  
gretchen.booma@corcoranpacific.com  
www.corcoranpacific.com

*corcoran*  
PACIFIC PROPERTIES





\$1,300,000

# 180 DEGREE SPECTACULAR OCEAN VIEW

4.75 AC | MLS# 633546 | \$1,300,000

Rare acreage on the South Side of Kauai. 4.75 acres of manicured land with spectacular ocean views overlooking the Poipu shoreline and the forbidden Island of Niihau. Minutes to beautiful beaches, first class golf, fine dining and airport, yet you are above the fray at 1,100 ft elevation looking only at tropical vegetation, blue sky and ocean. Driveway is paved, water and electricity to the lot. You are ready to build your dream home on Kauai. Wake up to the sun rising in the east over the ocean and end your day with a setting sun over Niihau on the west side. This is a uniquely beautiful property that must be seen to be truly appreciated.



*Invest In Your Dreams*

**F. Lee Morey**  
PB, Lic.# 15886  
F. Lee Morey, BROKER/REALTOR®  
2-2514 Kaumalii Hwy, Ste. 216  
Kalaheo, HI 96741  
808.651.6720  
f.leemorey@gmail.com  
www.fleemoreybroker.com











\$1,125,000



## PEACE AND PRIVACY

Papaikou, Big Island | 4,120 SQFT  
12.92 AC | 3BR/4BA  
MLS# 645636 | \$1,125,000

Expansive, top of the world views of Hilo Bay and 12.92 acres of land. Rolling hills, woods, and pasture land surround this three-bedroom, four-bath retreat in South Hilo. A distinctive custom home, it features a spacious, open-concept kitchen with granite countertops, a large breakfast bar and ample cabinetry. Vaulted ceilings, a wood-burning living room fireplace, and cool concrete flooring on the lower level add to the uniqueness of this offering. Peace and privacy are yours from this Papaikou haven, which boasts a brand new off grid solar system and a catchment water system. Just a few miles from Hilo Town, the home also provides easy access to all that East Hawaii has to offer, to include beach parks, hiking trails, and waterfalls.



**Meg Saunders**  
R(B) 19200  
808.895.3147  
meg@theduryeagroup.com

COMPASS



**Donna Duryea**  
R(S) 62459, CRS, GRI, ABR  
808.987.4511  
donna@theduryeagroup.com  
www.theduryeagroup.com





\$1,090,000



1004 SUNSET PLACE

Kapalua, Maui | 15,764 SQFT Land  
MLS# 390895 | \$1,090,000

This vacant land of over 1/3 of an acre is the largest remaining buildable lot in Phase 1 in the desirable Pineapple Hill Subdivision in the Kapalua Resort. Its pie shape allows for optimization of the unobstructed panoramic views with spectacular sunsets looking West, and the beautifully landscaped cul-de-sac and part of the West Maui Mountains on the East. Walking distance to two of the best beaches, snorkeling, scenic coastal hiking trails, and the protected rare acrobatic petrel seabirds (U‘a‘u) that likely assisted early voyagers in finding Hawaii. This prestigious gated community is Surrounded by Maui’s premier golf resort with memberships available.



Robert R. Myers  
REALTOR (S), SRS  
Tel: 808.283.3067  
Robert@MauiHomeSales.com  
www.MauiHomeSales.com



For all the Maui listings check out my website:  
**www.MauiHomeSales.com**  
Including Interactive Maps of Kaanapali, Kapalua and Wailea





SOLD ON MAUI



# 250 NOHO LIKE WAY

Wailea, Maui | 3,980 SQFT  
22,377 SQFT Land | 4BR/5BA  
MLS# 390433 | \$7,500,000

Luxury Island Living at its Finest! Wailea Highlands, the only gated half-acre subdivision in Wailea & this elegant estate is nestled on the front row of the 12th fairway. A premier community perched above on the Wailea Blue Golf course w/ spectacular views of the ocean, Haleakala, & green pastures of Ulupalakua. This timeless contemporary home offers 4-bedroom en-suites & the 5th full bath allows outdoor access. This custom-built single level home has a wonderful design featuring master suite & office on North & guest suites on South for great separation & privacy.  
See Video: [www.vimeo.com/soldonmaui](http://www.vimeo.com/soldonmaui)



**Diane K. Pool**  
R(B)-17896, ABR, CRS  
808.276.2004  
[diane@SoldOnMaui.net](mailto:diane@SoldOnMaui.net)  
[www.SoldOnMaui.net](http://www.SoldOnMaui.net)







76-981 AEO ST - SOLD

Kailua-Kona, Big Island | 7,542 SQFT | 25,178 SQFT Land | 4BR/4.5BA | MLS# 647927 | \$2,750,000

76-981 Aeo is an architectural delight highlighting Kona’s natural beauty in a new and modern setting. Stunning roof lines and soaring glass panels in the living room embrace the incredible sea view and tropical ambience. With over 7,500 sqft of interior living space, this home truly is your castle. Hale Aeo offers 25 ft ceilings, four-bedroom/four-bathroom suites, with the north and south suites having their own private lanais and enormous ocean views. The two home office areas,

entertainment room, and a lower-level basement area all provide ample work-from-home space and room for your needs. An incredibly private exterior lanai area leads to your heated, saline pool. This partially covered area is perfect for days filled with sunshine and laughter, or cool evening gatherings. You are at peace, in your incomparable new Kona home.





SOLD



**COLDWELL BANKER**  
ISLAND PROPERTIES



**Marco A. Silva**

REALTOR®, Broker, RB-20599

808.557.8921 | [Marco@KonaLuxuryRealEstate.com](mailto:Marco@KonaLuxuryRealEstate.com)

[KonaLuxuryRealEstate.com](http://KonaLuxuryRealEstate.com)

Certified Luxury Home Marketing Specialist®

Certified Residential Specialist | Certified Negotiation Expert

2019 Top PERFORMER® Hawaii Business Magazine

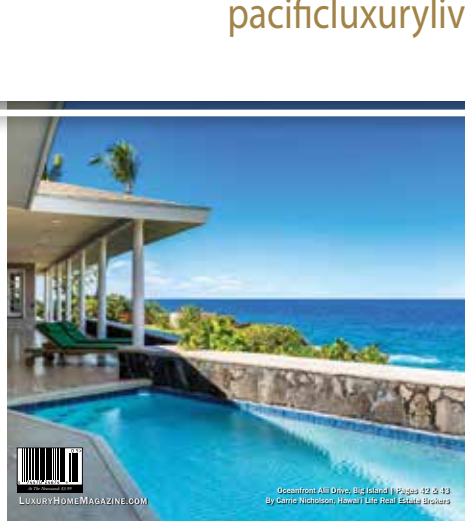
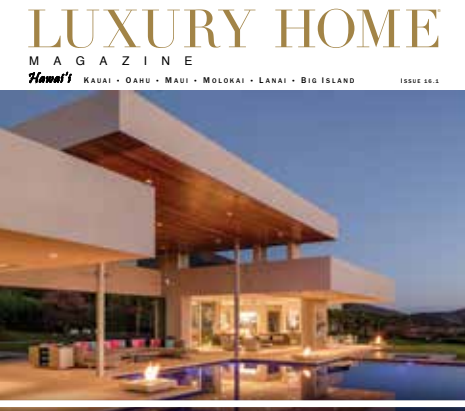
2017 Top 100 REALTOR® Hawaii Business Magazine

2016 Top 100 REALTOR® Hawaii Business Magazine



LuxuryHomeMagazine.com





GET  
LUXURY HOME  
MAGAZINE  
*Delivered*  
TO YOUR DOOR

An annual subscription  
is just a click away.

SUBSCRIBE 

[pacifcluxuryliving.com/subscribe](https://www.pacifcluxuryliving.com/subscribe)



*Home is where our story begins...*



*Nina*

Nina Pfaffenbach, Realtor  
Landmark Real Estate, LLC  
1888 Kalakaua Ave., Suite C105  
Honolulu, HI 96815  
808-292-0707  
*License #RB-19002*

*John De Mello Photography: [johndemello.photoshelter.com](http://johndemello.photoshelter.com)*



[www.hawaiilandmark.com](http://www.hawaiilandmark.com)



# LUXURY IS CAPTIVATING

When your property is expertly marketed and displayed on hundreds of websites worldwide, it's going to get noticed.

78-107-A Holua Rd, Kailua-Kona | MLS# 649077



**COLDWELL BANKER**

**ISLAND  
PROPERTIES**

EXPERIENCE THE GLOBAL LUXURY DIFFERENCE  
ISLANDPROPERTIES.COM | (808) 875-7000 | RB-16822



EXCEPTIONAL PROPERTIES DESERVE EXCEPTIONAL AGENTS



**Kurtis Becker**  
(808) 430-6785  
REALTOR(S)



**Karen Ostlie**  
(808) 937-1174  
REALTOR(S)



**Marco Silva**  
(808) 557-8921  
REALTOR(B)



**Derinda Thatcher**  
(808) 960-3433  
REALTOR(B)



**Carla Womack**  
(808) 896-6768  
REALTOR(S)

BIG ISLAND



**Byron Barth**  
(808) 212-5823  
REALTOR(S)



**Roberta Charles**  
(808) 652-2136  
REALTOR(B)



**Ilona Coffey**  
(808) 635-1495  
REALTOR(B)



**Brenda Crawford**  
(808) 651-8234  
REALTOR(B)



**Kelly Liberatore**  
(808) 639-2061  
REALTOR(B)



**Richard Shaw**  
(808) 639-0774  
REALTOR(B)

KAUAI



**Terry Alling**  
(808) 633-3382  
REALTOR(S)



**Max Blair**  
(808) 866-2334  
REALTOR(S)



**Karen I. Browne**  
(808) 344-1682  
REALTOR(S)



**Jan Bryan**  
(808) 214-7837  
REALTOR(S)



**Al Chiarella**  
(808) 276-7777  
REALTOR(B)



**Meghan Clair**  
(808) 463-8485  
REALTOR(S)



**Geoffrey Cook**  
(808) 281-6666  
REALTOR(S)



**Halleh Dunncliffe**  
(808) 269-8888  
REALTOR(B)



**Patrick Franta**  
(808) 280-7728  
REALTOR(S)



**Jolanta Frazier**  
(808) 283-6262  
REALTOR(B)



**Janice Goodnight**  
(808) 298-9678  
REALTOR(S)



**Erin Haywood**  
(808) 264-8037  
REALTOR(S)



**Linda Hedden**  
(808) 280-3054  
REALTOR(B)



**Addie Heiner**  
(808) 357-6980  
REALTOR(B)



**Gary Heiner**  
(808) 357-6981  
REALTOR(S)



**Kim Insley-Morrell**  
(808) 276-7766  
REALTOR(S)



**Riette Jenkins**  
(808) 870-4073  
REALTOR(B)



**Kristen Kingwell**  
(808) 281-7313  
REALTOR(S)



**Amy Lam**  
(808) 385-0768  
REALTOR(S)



**Wendy Macaheleg**  
(808) 269-1777  
REALTOR(B)



**Mike Marshall**  
(808) 495-8929  
REALTOR(S)



**Bruce McDonald**  
(808) 283-4189  
REALTOR(B)



**Gary Moors**  
(808) 891-8989  
REALTOR(B)



**Robert Myers**  
(808) 669-6565  
REALTOR(S)



**George Nunes**  
(808) 385-4665  
REALTOR(B)



**Marcus Nygren**  
(808) 463-5744  
REALTOR(B)



**Carol Olsen**  
(808) 298-5296  
REALTOR(S)



**Patty Sadler**  
(808) 280-4994  
REALTOR(B)



**Betty Sakamoto**  
(808) 870-7062  
REALTOR(B)



**Roy Sakamoto**  
(808) 870-7060  
REALTOR(B)



**Melissa Smith**  
(808) 298-6810  
REALTOR(B)



**Rhonda Smith-Sanchez**  
(808) 205-2175  
REALTOR(B)



**Peggy Lyn Speicher**  
(808) 495-3525  
REALTOR(B)



**Sherrie Stinger**  
(808) 283-8050  
REALTOR(S)



**Dano Sayles**  
(808) 280-6532  
REALTOR(B)



**Kento Tanaka-Tamaki**  
(808) 357-4219  
REALTOR(S)



**Daniel Toth**  
(808) 268-7614  
REALTOR(S)



**Jesse Wald**  
(808) 446-5841  
REALTOR(B)



**Jeff Walter**  
(808) 268-2566  
REALTOR(S)



**Lori Wash**  
(808) 250-9356  
REALTOR(S)



**Volker Weiss**  
(808) 280-6882  
REALTOR(S)



**Mardi Werner**  
(808) 250-1769  
REALTOR(S)



**Damien Zanolini**  
(808) 281-4669  
REALTOR(S)



**Sonya Zepeda**  
(808) 321-9910  
REALTOR(S)

MAUI







*now touring*

## HAWAII'S MOST SPECTACULAR BEACHFRONT RESIDENCES

Awaken to the sound of the waves, right on the Big Island's best beach, at the legendary Mauna Kea Resort. Residences are supremely private, exquisitely appointed and graced by lavish resort amenities. These are the last and most rare absolute beachfront residences in all of Hawaii. From \$3.1M to \$8.995M.





First Owners Beach Residences, often the Designer's Choice, built by a Premium owner. Hand-laid and used to create a truly unique space. The interior is fully furnished and ready to move in. If any of these properties, they are not available for sale. If any of these properties, they are not available for sale. If any of these properties, they are not available for sale.

First owners moving in | Over 50% Sold



# Hapuna Beach Residences

AT MAUNA KEA RESORT

808.557.8689    [Info@MaunaKeaLiving.com](mailto:Info@MaunaKeaLiving.com)    [MaunaKeaLiving.com](http://MaunaKeaLiving.com)

*When not in residence, properties may be placed in the resort rental program.*



\$8,995,000



HAPUNA BEACH  
RESIDENCE AT  
MAUNA KEA RESORT

Mauna Kea Resort, Big Island  
3,408 SQFT | 4BR/4BA  
MLS# 641507 | \$8,995,000

Introducing Hawaii's most extraordinary beachfront residence on Hapuna Beach at the beloved Mauna Kea Resort. Let nothing come between you and the sea, sand and sky. Let nothing come between you and the legendary destination that has defined island luxury for generations. A rare and historic opportunity to own what may be the last beachfront residence in the world so magnificently located. This BRAND-NEW beachy contemporary residence features a private pool, European Oak wood flooring, high-end appliances, and upscale fixtures. B15 is the last ground floor 4-bay unit with a pool. Do not miss this rare opportunity to own this residence, steps away from one of the best white sand beaches in the world!



**Tomoko Matsumoto**  
REALTOR® Principal Broker, Owner  
Hapuna Realty  
68-1330 Mauna Lani Drive, Suite 130 Kohala Coast, HI 96743  
[www.HapunaRealty.com](http://www.HapunaRealty.com) | [Tomo@HapunaRealty.com](mailto:Tomo@HapunaRealty.com)  
808.557.8689







**\$8,950,000**



## MODERN LUXURY WITH A SENSE OF OLD HAWAII IN PUAKO

**Puako, Big Island**

**1.62 AC | 4BR/4.5BA**

**MLS# 647484 | \$8,950,000**

Modern luxury masterfully blended with a sense of old Hawaii! Situated on one of the largest oceanfront lots in Puako, this meticulously maintained and beautifully furnished home is the epitome of elegance, sophistication and simple luxury. 350+ feet of beach front with ocean views from every room. Three anchialine pools provide natural irrigation to mature trees. This custom estate is suitable as a primary residence or getaway for respite in a resort-like, private setting. The tropical pod style house features a private guest wing with 2 oceanfront suites, wet bar, washer + dryer, conveniently connected to the main pod via a covered bridge.

**Tomoko Matsumoto**  
REALTOR® Principal Broker, Owner

Hapuna Realty

68-1330 Mauna Lani Drive, Suite 130 Kohala Coast, HI 96743

[www.HapunaRealty.com](http://www.HapunaRealty.com) | [Tomo@HapunaRealty.com](mailto:Tomo@HapunaRealty.com)

808.557.8689





# LUXURY HOME

M A G A Z I N E

501 Fourth Street, #854 Lake Oswego, OR 97034



## WAILEA POINT - 402, The Premier Location on the Point

Wailea, Maui | 4,544 SQFT | 4BR/4.5BA | MLS# 391347 | \$17,770,000 | See More on Pages 12 & 13

Robert H. ‘Robbie’ Dein

RB-18398 | 808.250.3564  
Robbie@MauiRealEstateAdvisors.com

Kenneth M. ‘Ken’ Hayo

RB-15529 | 808.283.8435  
Ken@MauiRealEstateAdvisors.com



Luxury Home Magazine®

HAWAII

Issue 16.3