

LUXURY HOME[®]

M A G A Z I N E

Hawai'i

KAUAI • OAHU • MAUI • MOLOKAI • LANAI • BIG ISLAND

ISSUE 16.4



LUXURYHOMEMAGAZINE.COM

Tropical Retreat at Kohanaiki, Big Island
Presented by Joni J. Metzler, Pages 16-17



W a r d V i l l a g e

ANAHA #2801 - **\$3,380,000**

- 3 BD, 3 BA, Net Living - 1,939 sf
- Views - Ocean, Mountain, Beach Park, Marina, Sunset & City



W a i k i k i

WAIKIKI LANDMARK
PENTHOUSE #3502 - **\$2,100,000**

- 2 BD + Den, 2.5 BA, Net Living - 2,134 sf
- Views - Diamond Head, Ocean, Ala Wai Canal, Manoa Valley, Mountain & City

For More info: info@jtchawaii.com



John "Jack" Tyrrell
President
Principal Broker, CRS, CRB
CPA (not in public practice)
Lic. # RB-19880
E: Jack@jtchawaii.com
C: 808.306.6933



May Lew Tyrrell 廖富溪
Executive Vice President
Broker-In-Charge, MBA, GRI, CRS, CRB, CIPS
Lic. # RB-22693
WeChat: Mayinhawaii (普通话)
E: May@jtchawaii.com
C: 808.223.3364





RESIDENTIAL



OFFICE SPACE



ALAKEA CORPORATE TOWER PENTHOUSE 1 \$2,500,000

- 4 BD, 2.5 BA, Net Living - 4,383 sf, Class A Office 2,000 sf (reception area, 3 office/conference rooms)
- Views - Diamond Head, Ocean & Mountain

1100 Alakea Tower Penthouse 1 is a unique mixed use property that is ideal for creating the perfect home/office environment in luxurious surroundings. The 2,383 sf Penthouse residence has two lavish bedrooms which feature ensuite bathrooms. The master suite features a jacuzzi, Furo-soaking tub, sauna and expansive walk in closet. The magnificent views of Diamond Head, the ocean and the mountains further complement the gorgeous surroundings of the spacious living room, dining room and kitchen. The 2,000 sf of Class A office space provides a separate space in which to work and meet with clients or patients. The office consists of a reception area, three office/conference rooms, a kitchenette/breakroom and a large open area that can be designed to fit your needs. 6 parking stalls are included.

Time to Sell, Buy or Rent? Please Call 808 532 3330



WARD VILLAGE
Top Producing Agent by
Units & Dollar Volume
2014

WARD VILLAGE
Top Producing Agent by
Units & Dollar Volume
2015

For More Information:
808 532 3330
www.jtchawaii.com



Jack Tyrrell & Company



@jtchawaii



@jtchawaii

JACK TYRRELL
& COMPANY

A Real Estate Brokerage Corporation



3787 DIAMOND HEAD ROAD

Honolulu, Oahu | 6,926 SQFT | 36,118 SQFT Land | 4BR/4.5BA | MLS# 202112138 | \$19,850,000

A Location Unlike Any Other... Prepare to step back in time & experience this fabulous sprawling Diamond Head beachfront estate situated on over 36,000 sf of land with expansive rolling lawns & beautiful tropical landscape complete with mature fruit & flowering trees. A timeless residence graciously rests on this legendary parcel overlooking 123 linear ft of prime sandy beach frontage & mesmerizing ocean vistas. A lovely open floor plan offers striking hardwood floors, open beam board & batten ceilings with combed redwood accent walls

and large, picturesque windows throughout. Walls of glass open to spacious wrap around seaside lanais ideal for sunning by day or dining at sunset while overlooking azure waters & rolling waves. Multiple lounge areas throughout seamlessly connect the main living rm, adjacent family rm & large office/flex rm all with exceptional views. This rare & truly sought-after location is magical & offers a once in a lifetime opportunity...



\$19,850,000



**COLDWELL BANKER
REALTY**

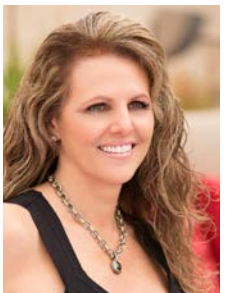


TA
TRACY ALLEN
LOCAL EXPERTISE | GLOBAL REACH



© 2021 Coldwell Banker Realty | 1314 S King Street, 2nd Floor Honolulu, Hawaii
96814 | (808) 596-0456 The information contained herein,
while not guaranteed, has been obtained from sources believed to be reliable. All
square footages are approximate and may differ from the tax records.

Tracy Allen
Vice President, RA, RS-46610
Global Luxury Ambassador
Luxury Property Specialist
808.927.6415
Tracy@CBRealty.com
www.TracyAllenHawaii.com
#1 Agent in Hawaii, Coldwell Banker Realty



LuxuryHomeMagazine.com

\$8,500,000



4528 KAHALA AVENUE

Honolulu, Oahu | 7,964 SQFT
20,144 SQFT Land | 5BR/5Full/2Half BA
MLS# 202115056 | \$8,500,000

Private Luxury Resort! Stunning modern contemporary home provides the ultimate haven with open spaces for the entire family to sun, swim, play & recharge. Expansive gated parcel of 20,000+ sq ft provides the perfect location for this 5-bedroom, primarily single level home with separate live-in quarters on coveted Kahala Ave. Numerous custom details include art niches, dramatic vaulted ceilings & Mahogany glass doors that pocket to reveal outdoor covered lanais overlooking a modern-day designed pool & tropical landscaped grounds. Master Suite with spa-like bath & poolside lanai is fabulous & includes a home office. Located within steps to Kahala Beach & nearby golfing, dining, shopping & more.





\$6,975,000



SYMPHONY HONOLULU GRAND PENTHOUSE

Honolulu, Oahu | 4,101 SQFT | 4BR/4.5BA
MLS# 202112212 | \$6,975,000

Modern Penthouse Living. Unparalleled views and impeccable sleek, modern design. Developer's private residence combines two penthouses into a one-of-a-kind home with four bedrooms, four and one half baths and four parking stalls. Over 3,800 square feet plus two open lanais total over 4,100 square feet of sumptuous luxury living areas with floor-to-ceiling windows & 180-degree unobstructed mountain to ocean views of Diamond Head, Kakaako and beyond. Custom Venetian plaster walls and French White Oak wide plank wood floors are found throughout this remarkable home in the sky.

TA
TRACY ALLEN
LOCAL EXPERTISE | GLOBAL REACH

Tracy Allen
Vice President, RA, RS-46610
Global Luxury Ambassador
Luxury Property Specialist
808.927.6415
Tracy@CBRealty.com
www.TracyAllenHawaii.com
#1 Agent in Hawaii, Coldwell Banker Realty



\$3,788,000



591 PAIKAU STREET

Honolulu, Oahu | 5,621 SQFT
10,002 SQFT Land | 4BR/5.5BA
MLS# 202106530 | \$3,788,000

Diamond Head Villa. This sprawling executive residence is situated on the slopes of iconic Diamond Head and offers 4 bedroom suites + a spacious den ideal for home office use and 5½ baths. The expansive Master Suite offers dual walk-in closets, comfortable lounge area + a lavish bath with dual vanities, walk-in shower and deep soaking tub. The open floor plan provides both formal and casual entertaining areas that connect to spacious wraparound lanais, tiled pool and lovely landscaped grounds. The large kitchen with professional appliances is ideal for the home chef with a built-in breakfast nook overlooking poolside vistas. Conveniently located to nearby beaches, parks, golfing, shopping, and many wonderful dining experiences...



Tracy Allen
Vice President, RA, RS-46610
Global Luxury Ambassador
Luxury Property Specialist
808.927.6415
Tracy@CBRealty.com
www.TracyAllenHawaii.com
#1 Agent in Hawaii, Coldwell Banker Realty



© 2021 Coldwell Banker Realty | 1314 S King Street, 2nd Floor Honolulu, Hawaii
96814 | (808) 596-0450 The information contained herein,
while not guaranteed, has been obtained from sources believed to be reliable. All
square footages are approximate and may differ from the tax records.

CASE PROPERTIES
International

Patricia Case
ESQ., R | RB-15541 | RB-21841
Case Properties International
Brokered by eXP Realty RB 21841
808.392.1935
pattycase1@gmail.com
www.patriciacasepremier.com





PENDING IN ONLY 3 DAYS!



KAANAPALI ALII #4-205

Kaanapali, Maui | 1,669 SQFT | 2BR/2BA
MLS# 392224 | \$1,825,000

Experience the relaxed luxury of island style living from this spacious 2 bedroom, 2 bath condominium in the Ka'anapali Alii Resort. Surrounded by lush tropical gardens, unit 4-205 is the beach side abode you've been waiting for. Some of the updated features include custom cabinetry, granite countertops, and stainless steel appliances accented by modern furnishings and decor. Just steps to the white sandy beach of Ka'anapali and a short walk to the nearby Whalers Village shops, dining and entertainment. Call your favorite REALTOR to schedule a tour of this great residence and start living the Ka'anapali luxury lifestyle today!



Leah Harbottle

Realtor®-Broker, Lic. #22910
Cell: 530.906.9180
Toll Free: 866.661.7887
Fax: 808.661.8358
Leah-Whalers@KW.com
www.KaanapaliLuxuryLiving.com



Gregory Harbottle Inc. R (PB)

Luxury Property Specialist, Lic. #19615
Cell: 808.385.8059
Toll free: 866.661.7887
Fax: 808.661.8358
ghthkh@msn.com
www.KaanapaliLuxuryLiving.com



ISSUE 16.4

INDEX



* Founding or Prestigious Member

THE ISLAND OF MAUI

David W. Richardson	27
Diane K. Pool*	64
Gregory Harbottle Inc.*	9
Josh Jerman	19
Kenneth M. 'Ken' Hayo*	15, 30
Leah Harbottle*	9
Mary Anne Fitch*	13
Nam L. Le Viet*	13
Raphael Wellerstein	53
Riette G. Jenkins	53
Robert H. 'Robbie' Dein*	15, 30
Robert R. Myers*	36
Rhonda Smith-Sanchez	38-41, 50-51
Tim Stice	19
Yvienne M. Peterson	56

THE ISLAND OF LANAI

Mary Anne Fitch*	35
Nam L. Le Viet*	35

THE BIG ISLAND

Donna Duryea*	62
Eileen Lacerte*	66
Hapuna Beach Residences	72-73
Hokuli'a	46-47
Joni J. Metzler*	Front Cover, 16-17, 45
Kohanaiki	24-25
Marco A. Silva	60-61
Meg Saunders	62
Renée H. Kraft	67
Tomoko Matsumoto*	74-75
Yvonne Khouri-Morgan*	18

THE ISLAND OF OAHU

Alex Watson	52
Cedric Choi	29
Dave Moyer	52
Dolores P. Bediones	26
Esther H. Park	59
Glen Fujihara	42
Jeffrey M. Fox	57
John "Jack" Tyrrell*	2-3
Julianna Garriis	29
Kelli Miller	44
May Lew Tyrrell*	2-3
Munro Murdock	63
Myra Brandt	21
Noel Pietsch Shaw	37, 54
Patricia Case	8
Ruthie Kaminskis	21, 43
Sachi Braden	11, 14, 23, 28
Tony Kawaguchi	49
Tracy Allen*	4-8

THE ISLAND OF KAUAI

Donna Rice	65
F. Lee Morey	68
Gabriela Da Luz	69
Lori Decker	55
Timbers Kaua'i	34

BUSINESS PARTNERS

Corcoran Pacific Properties	20
Padilla Designs, LLC*	22
Coldwell Banker Island Properties	70-71



FRONT COVER HOME

Tropical Retreat at Kohanaiki
Pages 16 & 17
Photography by mphotoi.com

LUXURY HOME MAGAZINE®
PACIFIC LUXURY LIVING™
501 Fourth Street, #854
Lake Oswego, OR 97034
Phone: 808.499.5491

FOR ADVERTISING INFORMATION VISIT:

luxuryhomemagazine.com

info@lhmhi.com

The most comprehensive and targeted distribution in the area, bar none!

LHM Media Group

Phone: (916) 458-6010
info@lhmmediagroup.com
LuxuryHomeMagazine.com

Visit Our Blog:
LuxuryHomeMagazine.com/blog

Chief Executive Officer
Solar Hing

Chief Operations Officer
Jessica Hing

Publishing Opportunities
publishing@lhmmediagroup.com

Published six times per year
©2021 LHM Media Group

Luxury Home Magazine®, Luxury Living and Lifestyle™ and LuxuryHomeMagazine.com are protected trademarks of LHM Media Group. Publisher is an authorized Independent Distributor and Licensee for a market specific area of Luxury Home Magazine®, Luxury Living and Lifestyle™ and LuxuryHomeMagazine.com. Publisher is licensed through LHM Media Group. LHM Media Group is not responsible for the contents of the magazine or the acts or omissions of the publisher or its representatives and makes no representations or guarantees. Reproduction in whole or in part (including materials, photos and formats) in any form without written permission from LHM Media Group is prohibited. All submissions become the property of LHM Media Group and may be used in any print, digital, social and online media. All rights reserved.

The information contained in *Luxury Home Magazine*® is deemed reliable, but not guaranteed. Contact each individual agent to verify information, which is subject to change.



Made and Printed in the USA.

Next Deadline:
Wednesday,
September 8th, 2021

ISSUE	DEADLINE	CIRCULATION
-------	----------	-------------

16.5	09/08/21	10/08 – 12/02
------	----------	---------------

16.6	11/03/21	12/03 – 02/20
------	----------	---------------

\$27,000,000



1133 IKENA CIRCLE HAWAII LOA RIDGE

Honolulu, Oahu | 9,570 SQFT
30,855 SQFT Land | 4BR/5Full/2HlfBA
MLS# 202108813 | \$27,000,000

Hi'ilani stands with all of its beauty, elegance, & splendor within the gates of prestigious Hawaii Loa Ridge. Modern Mediterranean meets 18th-Century French architecture where continuous walls of seamless windows maximize ocean views throughout. Enter through the 11-foot tall twin glass doors framed with Versailles-inspired wrought-iron scrolls to reveal crystal & marble perfection; an Imperial winding double staircase, 9½-foot Austrian crystal chandelier, French hand-embroidered silk draperies, & a magnificent European marble fountain with Diamond Head as your backdrop. Featuring 9,416 sq.ft. of interior living space, 7,156 sq.ft. of lanai & other outdoor living spaces, & 30,855 sq.ft. of land spanning 3 parcels, Hi'ilani stands in a class of its own on O'ahu.



Office License
RB-18153

Sachi Braden

Sachi Hawaii
CEO, Founder, & Principal Broker | RB-16308
808.596.8801
info@sachihawaii.com | www.sachihawaii.com



ハワイの不動産売買、別荘管理、賃貸管理に関するお問合せは日本語でどうぞ
サチハワイ総合不動産会社ーハワイ高級物件のエキスパート

Aloha from Maresa

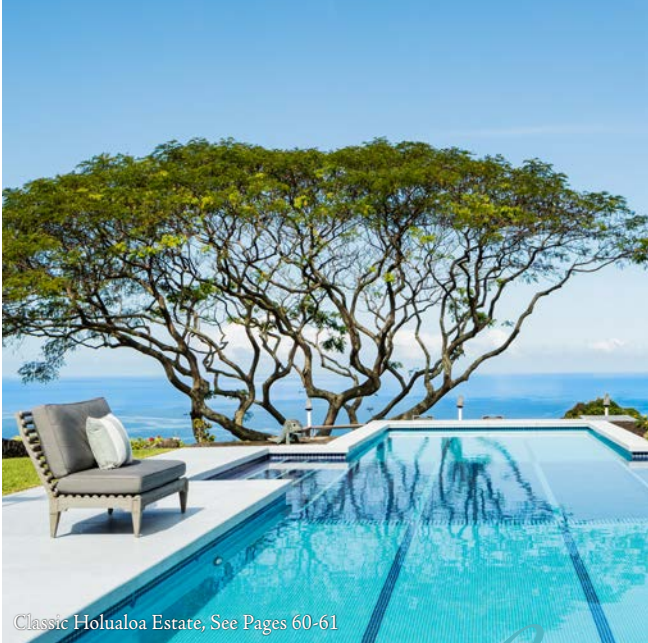
Say Aloha! Send editorial & advertising inquiries to info@lhmbhi.com



At *Luxury Home Magazine*, we are honored to showcase Hawaii's top-notch props. It is our goal to connect Realtors, buyers, and sellers, but also serve the home industry as a whole and create evergreen content for all homeowners. Whether you are in the market for a mansion priced at \$27 million on Oahu or a single-family home for \$1 million on Kauai, we have options for you! Perhaps you are more interested in sourcing countertops than assessing the current market. Every page in this issue is chock-full of images to inspire your next home renovation. This issue's front cover home features the best of the best when it comes to location, architecture, and interior design. For more information about the Tropical Retreat at Kohanaiki, presented by Joni J. Metzler, turn to pages 16 & 17.

Thank you for taking the time to pick up the magazine, read this note, and share some Aloha. We appreciate you!

Mahalo,
Maresa Giovannini
Maresa Giovannini
Editor in Chief



Classic Holualoa Estate, See Pages 60-61

IN THIS ISSUE



31 | Dressed to Impress



24 | Kohanaiki



74 | Hapuna Beach Residence



38 | Paia Beachfront

Lucky We Live Hawaii



FOLLOW US ON
INSTAGRAM!
[@hawaiiluxuryhome](https://www.instagram.com/hawaiiluxuryhome)

\$19,500,000



4851 LOWER HONOAPIILANI RD

Kahana, Maui | 8,469 SQFT
0.93 AC | 8BR/7BA/2HLF BA
MLS# 390187 | \$19,500,000

This West Maui Exclusive Oceanfront Compound includes two adjacent homes, 4851 Lower Honoapiilani Road and 10 Hui Road E in Kahana. Architecturally designed to maximize ocean views, this family estate accommodates 16 people comfortably. Built with quality high-tech materials and finishes throughout, the main home features a large great room, dining area, gourmet kitchen, media room, elevator, BBQ area, fabulous infinity pool/spa, attached Ohana and gate to the ocean. The second residence, along with its own garage and private entrance, offers all the luxury amenities to provide guests total independence.



Nam L. Le Viet
R(S)-61810
Hawaii Life Real Estate Brokers
Direct: 808.283.9007
Email: nam@mauisold.com
Web: mauisold.com



Mary Anne Fitch

R(B)-15747
Hawaii Life Real Estate Brokers
Direct: 808.250.1583
Email: sold@maui.net
Web: soldmaui.com





\$19,500,000

1103 KAIMOKU PL.
WAIALAE GOLF COURSE

Honolulu, Oahu | 6,728 SQFT
21,600 SQFT Land | 3BR/3.5BA
MLS# 202107497 | \$19,500,000

Nestled along Kai Nani’s majestic sandy shorelines on the island of O’ahu sits Villa d’Elegance, a paragon of luxury & opulence with inspirations of coastal Italian-Mediterranean architecture. Commanding 131 linear feet of sandy beach frontage & panoramic ocean vistas, this picturesque Hawaii retreat feels uniquely special. A manicured vineyard-style entryway invites you inside where a Grand spiral staircase & opulent European Great Room blend with scenic ocean views. Exquisite custom finishes & uncompromising craftsmanship adorn the 3 bed, 3.5 bath, 6,728 sq.ft. interior; highlights include an Italian Snaidero chef’s kitchen w/ bamboo forest backdrop, motorized sliding glass doors to maximize indoor/outdoor living, upper & lower level ocean view Grand Master suites & much more.



Sachi Braden
Sachi Hawaii
CEO, Founder, & Principal Broker | RB-16308
808.596.8801
info@sachihawaii.com | www.sachihawaii.com

ハワイの不動産売買、別荘管理、賃貸管理に関するお問合せは日本語どうぞ
サチハワイ総合不動産会社ーハワイ高級物件のエキスパート





\$17,770,000



ON THE VERY POINT OF WAILEA POINT

Wailea, Maui | 4,544 SQFT | 4BR/4.5BA
MLS# 391347 | \$17,770,000

Wailea Point is the most revered condominium resort property on Maui bar none. The original developer designed this upper-level full-floor unit as his personal residence and it has only been offered for sale once since 1986. Simply stated, it is ‘The Premier Location, On the Point’ of Wailea Point’s meticulously landscaped 28 oceanfront acres. The elegant custom interior design optimizes the 200 degree dynamic coastal, ocean, and outer island views, enhanced by ever-changing painterly year-round sunsets. Maui’s finest beaches, world-class shopping, dining, golf, and tennis are adjacent to this luxurious, secure gated oasis. www.Wailea-Point.com



Kenneth M. ‘Ken’ Hayo
Principal Broker-Owner | RB-15529
Maui Real Estate Advisors, LLC
Direct: 808.283.8435
Ken@MauiRealEstateAdvisors.com



Maui’s Only Realtor Recognized as a ‘Top 100 State of Hawaii Realtor’ Among 15,000 + Hawaii Realtors (for 14 Consecutive Years),
Top 100 Hawaii Realtors Hall of Fame, Hawaii Business Journal 2006–2019

Robert H. ‘Robbie’ Dein
Broker-Owner, ABR, CRS, RSPS | RB-18398
Maui Real Estate Advisors, LLC
Direct: 808.250.3564
Robbie@MauiRealEstateAdvisors.com





Cover Home



TROPICAL RETREAT AT KOHANAIKI

Kohanaiki, Big Island | 4BR/4.5BA | MLS# 649458 | \$17,500,000

Hawaiian Paradise thrives at this Hawaiian Estate home perched on a lushly landscaped acre overlooking the Pacific Ocean. Zak Architecture created a crisp and clean symmetrical plan in their signature contemporary Hawaiian style, as the Douglas Durkin Design team simultaneously developed the rich color palate of the finest architectural and interior design materials.

The exquisitely furnished home of approximately 7,200 sq. ft. under roof features 2 Master Suites in the Main Residence and 2 separate Guest Suites. The Great Room opens to an expansive lanai and lawn area with an infinity edge lap pool and jacuzzi. The home enjoys spectacular views of the Kona Kohala Coast, the Pacific Ocean, Maui and year-round sunsets.

Located at Kohanaiki, a private equity club community, member amenities include the Rees Jones designed golf course, clubhouse that includes a restaurant & bar, pro shop, exercise pavilions, complete world-class spa facilities, bowling alley, theatre, member's wine & cigar lockers, private dining, recreation room and member locker rooms. Outdoors is a 25 meter lap pool, sun deck and event lawn, outdoor gardens with steam, sauna, jacuzzi, cold plunge and cabanas for massage.

This is a very special home in a very special place, executed with an extraordinary vision, level of quality and attention to detail.

\$17,500,000



Joni J. Metzler
(R) B
Metzler Realty
808.640.6832
Joni@MetzlerRealty.com
www.MetzlerRealty.com



\$15,800,000



MAUNA KEA BLUFFS

Kamuela, Big Island | 8,141 SQFT
45,796 SQFT Land | 4BR/5.2BA
MLS# 645708 | \$15,800,000

With a Grand prize winning green design by Roth, Kimura architects, this contemporary, custom, luxury residence has 2,750 sqft of outdoor entertaining space, an infinity-edge 25-meter pool, sandy beach area with toddler depth ponds, and jacuzzi hot tub. Amazing mountain and ocean views for winter whale watching. With triple-gated access, it is located at the end of a cul-de-sac at the Bluffs of Mauna Kea on the Kohala Coast. The Bluffs is nestled between two world-class resorts (Mauna Kea and Hapuna) with magnificent beaches easily accessible by walking trails or by golf cart. As owners, the Mauna Kea Resort offers a Platinum club membership with signing privileges and preferential access to resort amenities: golf, beaches, tennis, fitness, salon, spa and dining.



Yvonne Khouri-Morgan
Realtor Broker
Luxury Kohala Coast Resorts
808.937.4466
Yvonne@alohalife.net
www.HawaiiResortLuxuryHomes.com
www.MaunaLaniRealty.com



\$15,000,000



600 HAUMANA ROAD

Haiku, Maui | 5,938 SQFT | 73.21 AC
5BR/4.5BA | MLS# 389740 | \$15,000,000

Maui oceanfront 73-acre estate with maximum privacy, security, and open space. This is the 1st time ever this estate has been offered for sale. The parcel encompasses Kealii Point between Uaoa Bay and Pilale Bay with nearly a 1/2 mile of coastline and no neighbors in sight. The elegant Palm tree-lined driveway leads to the approx. 6,000 sqft, 5 bedroom, 4.5 bathroom home plus a gym. Additionally, there's a 2,000 sqft shop with lots of room for ATVs, jet skis, boards and more. The property is a short twenty-five minute drive from Kahului airport or helicopter to your front door in a matter of minutes. This is the crown jewel of the North Shore.



Tim Stice
REALTOR (B) - RB-21556
808.268.8511 | timstice@hawaiiilife.com



Josh Jerman
REALTOR(B), RB-19728
808.283.2222 | Josh@HawaiiLife.com





live who you are

Corcoran Pacific has your home in Hawaii.

Locally owned and operated since 2005.
A tradition of excellence and impeccable service.

corcoran

PACIFIC PROPERTIES

KAUAI | OAHU | MAUI | HAWAII ISLAND | [CORCORANPACIFIC.COM](https://corcoranpacific.com)

©2020 Corcoran Group LLC. All rights reserved. Corcoran® and the Corcoran Logo are registered service marks owned by Corcoran Group LLC. Corcoran Group LLC fully supports the principles of the Fair Housing Act and the Equal Opportunity Act. Each Office is independently owned and operated.

\$15,000,000

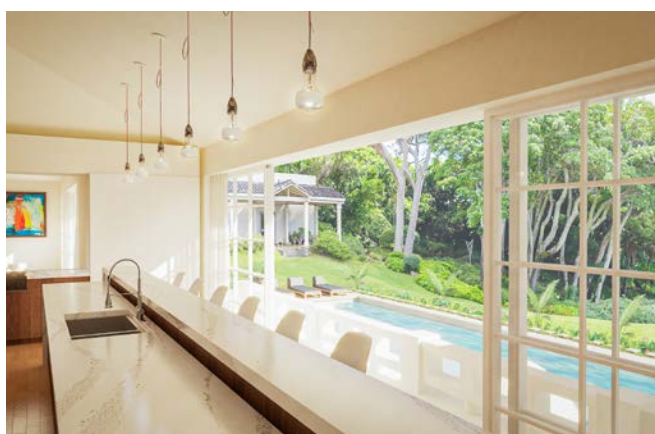


SPALDING HOUSE - MAKIKI HEIGHTS

Makiki, Oahu | 3.433 AC
MLS# 202115432 | \$15,000,000

Rooted in History, Spalding House is perched above Honolulu on 3.44 acres of land with vast views of Diamond Head & City Lights below. Zoned R-10 the main residence and gallery space is designated Historic Property. This extraordinary home would be an ideal gallery setting for a private art collection or could be restored to its former state as a grand private residence. This property's prime location in Makiki Heights, its established infrastructure & amazing views brings endless opportunities for the inspired buyer. Offered at \$15,000,000 | MLS# 202115432

**Renderings of Interiors for Visionary Purposes Only*



Myra Brandt

RB-14004

Vice President, Partner

Corcoran Pacific Properties

REALTOR® CIPS, CRB, SRES

808.224.3413

myra.brandt@corcoranpacific.com

www.corcoranpacific.com

corcoran

PACIFIC PROPERTIES



Ruthie Kaminskis

Realtor-Associate

RS-78191

Ruthie@corcoranpacific.com

808.377.0443

RuthieKHawaiiHomes.com





Corten Steel for
that rustic look

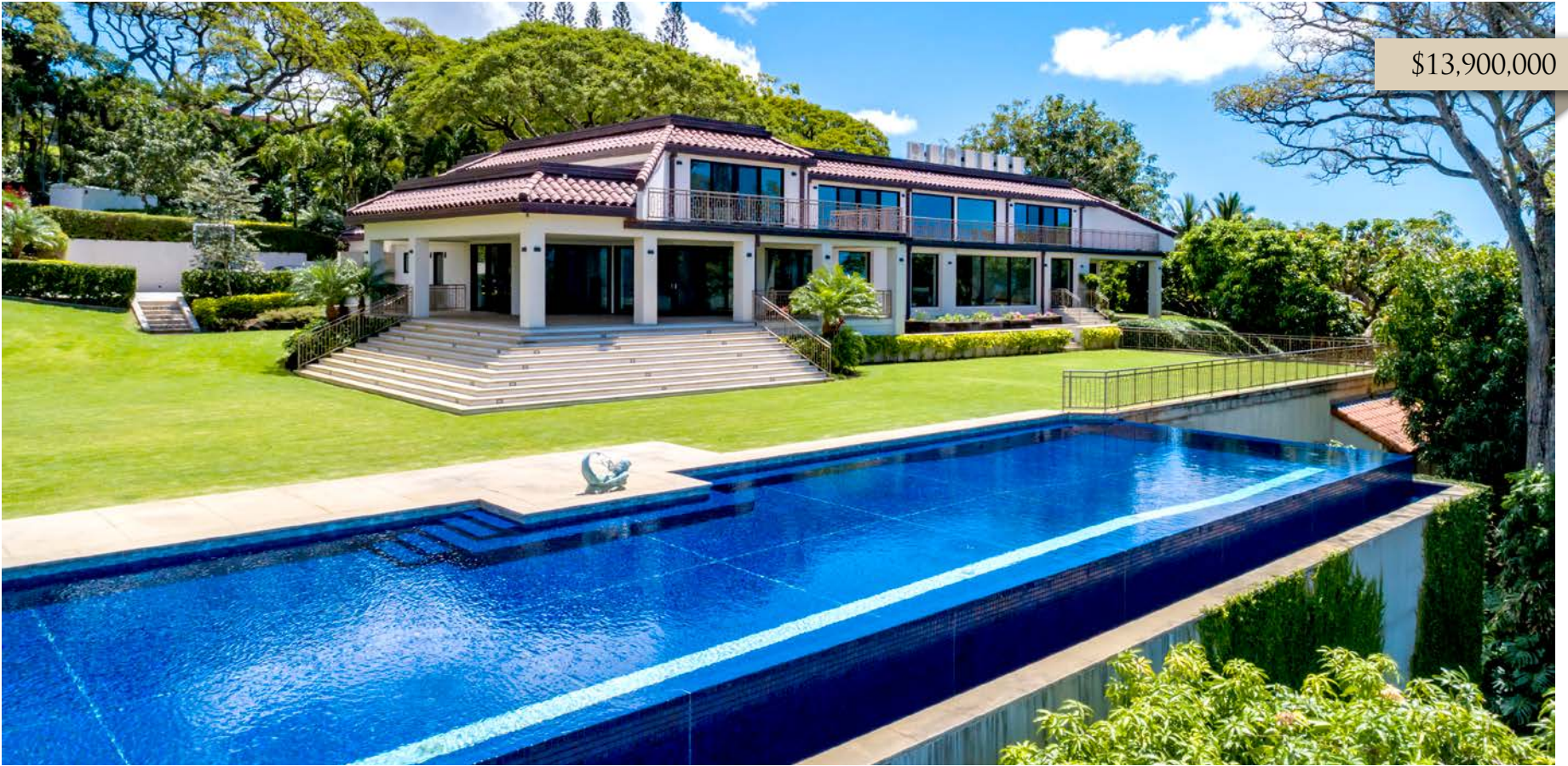


SERVING ALL HAWAIIAN
ISLANDS & BEYOND

808 879 0938



PLEASE VISIT OUR GALLERY
padilladesigns.com



\$13,900,000



2549 TANTALUS DR. MAKIKI HEIGHTS

Honolulu, Oahu | 15,113 SQFT
91,105 SQFT Land | 4BR/4.5BA
MLS# 202117890 | \$13,900,000

Perched along prestigious Makiki Heights is Honolulu's Crown Jewel hillside ocean view luxury estate. This 3-Parcel estate overlooking Punchbowl, the Pacific, urban Honolulu, & Waianae Mountain Range panoramas, features a sprawling 11,596 sq.ft. 4-bedroom, 4.5-bath main residence, 3-bedroom, 3-bath guest house, & separate pool house. The Modern-Mediterranean home's appearance is highlighted by an infinity-edge lap pool surrounded by multiple landscaped yard spaces. A soaring Grand Living Room anchors the main living area, more intimate spaces throughout the first level, and a grand, resort-style master suite; upstairs, 3 additional suites & finished bonus room. Gated for privacy & security, this well-positioned estate is just minutes from urban Honolulu's near-endless shopping & entertainment activities.



Office License
RB-18153

Sachi Braden

Sachi Hawaii
CEO, Founder, & Principal Broker | RB-16308
808.596.8801
info@sachihawaii.com | www.sachihawaii.com



ハワイの不動産売買、別荘管理、賃貸管理に関するお問合せは日本語でどうぞ
サチハワイ総合不動産会社ーハワイ高級物件のエキスパート



Access to and use of the golf course and other private amenities at Kohanaiki Club is available only to members of the Kohanaiki Club and are subject to the payment of additional fees. Membership to the Kohanaiki Club is by invitation only and is not included with a purchase of a property. No representation or warranty is made regarding whether a purchaser will qualify for such membership. Obtain the Property Report or its equivalent required by Federal and State law and read it before signing anything. No federal or state agency has judged the merits or value, if any, of the property shown in this advertisement. WARNING THE CALIFORNIA DEPARTMENT OF REAL ESTATE HAS NOT INSPECTED, EXAMINED, OR QUALIFIED THIS OFFERING. Kohanaiki Realty LLC 73-2055 Ala Kohanaiki, Kailua Kona, Hawaii 96740.



KOHANAIKI

Kona Coast

THE GET AWAY FROM EVERYTHING CLUB

There are clubs, and there is Kohanaiki—a private oceanfront playground that welcomes a new generation of Kona-lovers. Five minutes south of the Kona International Airport, and uniquely positioned to offer a sense of escape, Kohanaiki embraces island life in ways both new and familiar. Whether at the 67,000-square-foot Clubhouse, on the Rees Jones-designed golf course, aboard the 39-foot Kaikea, or in the cabanas opening out to views of lava flows and anchialine ponds, you're surrounded by history, culture and adventure. Refreshingly private yet remarkably social, Kohanaiki is a new living experience unlike anywhere else in the islands.

HOMES FROM \$3 MILLION

888.406.1256 • KOHANAIKI.COM/KONA



\$11,500,000



5949 KALANIANA'OLE
HIGHWAY #D

Honolulu, Oahu | 7,995 SQFT
47,737 SQFT Land | 5BR/6BA
MLS# 202104759 | \$11,500,000

Paiko Lagoon Retreat! Surrounded by 700 feet of water frontage - the Kanewai Pond on the left which was built in the 1700's which is one of the few remaining royal ponds often visited by Hawaiian chiefs - the stream which opens out to Paiko Lagoon, a sanctuary for migratory birds. This hidden gem is only 20 minutes from Waikiki. 8,000 sq ft single level home sits on over an acre of meticulously landscaped gardens. Designed by famous Russian architect, Vladimir Ossipoff, known as the Master of Hawaiian architecture, Ossipoff was popular for creating indoor/outdoor living with all the living spaces opening out to pool, lagoon, gardens. Great for entertaining family and friends or just enjoying nature and some quiet time. Short walk to the beach. A chance to own a modern piece of Old Hawaii.

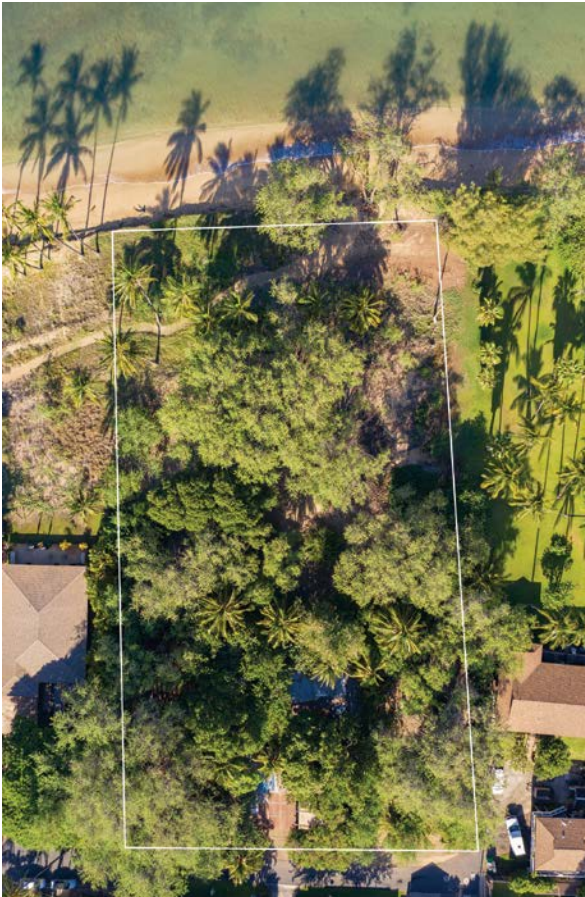


Dolores P. Bediones
(R), Partner, RB-15568
Luxury Locations Premier Specialist
Direct: 808.383.9787
Office: 808.732.5037
Dolores.Bediones@locationshawaii.com
DoloresBediones.com





\$10,500,000



MAUI GOLD COAST - TWO OCEANFRONT PARCELS

Kihei, Maui | 30,056 SQFT Land
MLS# 388360 | \$10,500,000

RARE OFFERING.....2 parcels at the very north end of a quiet residential street. Over 205 LINEAR FEET of frontage in this epic beachfront setting!! 2 contiguous lots comprising 30,035 sq.ft.; lot #1 is 18,527 sq.ft. and lot #26 is 11,508 sq.ft. Seller's preference is to sell as one. The land is perched on a small knoll maximizing views of the West Maui Mts and stellar year round sunsets. All utilities to site.



\$10,000,000



2443 MAKIKI HEIGHTS DR.

Honolulu, Oahu | 8,323 SQFT
46,280 SQFT Land | 6BR/6Full/2HlfBA
MLS# 202103462 | \$10,000,000

Commanding hillside luxury estate positioned on prestigious Makiki Heights Drive with stunning ocean panoramas stretching from Diamond Head to Downtown Honolulu. This custom-designed retreat was thoughtfully crafted to maximize Diamond Head & Ocean views. Immersed in tropical landscaping & old growth Longan, Avocado, citrus, herb garden & flowering foliage, walking paths & secret gardens add to the island retreat ambiance. Private, gated entrance leads to a motor court and 4-car garage; step inside to a grand main living area with soaring ceilings, pocket doors, with majestic views as your backdrop. This incredible location is just minutes to all that urban Honolulu offers. Welcome home to one of Honolulu's most prestigious luxury estates.



Sachi Braden
Sachi Hawaii
CEO, Founder, & Principal Broker | RB-16308
808.596.8801
info@sachihawaii.com | www.sachihawaii.com

ハワイの不動産売買、別荘管理、賃貸管理に関するお問合せは日本語どうぞ
サチハワイ総合不動産会社ーハワイ高級物件のエキスパート





RARE PARK LANE SKY RESIDENCE

Honolulu, Oahu | 3,081 SQFT | 3BR/3.5BA
MLS# 202106674 | \$9,950,000

Prominent penthouse position in preferred Building 3 provides vibrant mountain to ocean views, exceptional natural lighting and through breezes. Floor-to-ceiling walls of glass in both the front and back of the residence, master bedroom and guest rooms all focus on the dazzling everchanging views. Mountains come alive at night while the sun sets to the South-South West. Extra large lanai and living, dining & kitchen areas flow seamlessly together to accommodate large & small gatherings. The convenience of Building 3 in relation to the lobby and luxurious amenities is wonderful! Your front door is just steps from the elevator!



Cedric Choi

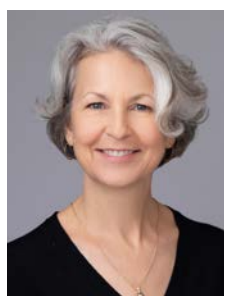
JD, R, (RB-22512)
808.285.2486
cedricchoi@hawaiilife.com
www.Choi.HawaiiLife.com

THE
CHOI
GROUP

 HAWAII LIFE |  FORBES

Julianna Garriss

R, BIC, CRS, CLHMS (RB-17280)
808.255.7143
julie@garrishawaii.com
www.Choi.HawaiiLife.com



\$8,950,000



A MODERN ARCHITECTURAL GEM

Launiupoko, Maui | 3,957 SQFT
5.4 AC | 4BR/3.5BA
MLS# 389735 | \$8,950,000

This Contemporary, Modern Residence designed by renowned Maui architect, Rick Ryniak, captures the beauty of its surroundings, morning sunrises over the West Maui mountains, & mesmerizing sunsets over Lanai. The sophisticated design choices; cantilevered roofs, clean lines, 10' floor-to-ceiling windows & Fleetwood pocketing doors are consciously minimalist, allowing the beauty of Maui to dominate while affording a seamless indoor/outdoor living experience. A floating roof blends into the land & mountains behind. The light-filled, master & guest bedroom suites are situated at the opposite ends of the home. Enjoy 1,935 sf of outdoor covered living space. www.MakilaModern.info



Robert H. 'Robbie' Dein

Broker-Owner, ABR, CRS, RSPS | RB-18398
Maui Real Estate Advisors, LLC
Direct: 808.250.3564
Robbie@MauiRealEstateAdvisors.com



Maui's Only Realtor Recognized as a 'Top 100 State of Hawaii Realtor' Among 15,000 + Hawaii Realtors (for 14 Consecutive Years),
Top 100 Hawaii Realtors Hall of Fame, Hawaii Business Journal 2006-2019

Kenneth M. 'Ken' Hayo

Principal Broker-Owner | RB-15529
Maui Real Estate Advisors, LLC
Direct: 808.283.8435
Ken@MauiRealEstateAdvisors.com



Dressed to Impress

Fully Furnished Island Homes





It's no secret that moving can be a time-consuming and exhausting process. Unfortunately, the work doesn't end when your belongings are behind a new front door. The true task still lies ahead: how do you begin organizing all that *stuff*? But what if you only had to bring your favorite swimsuit and a few family photos? If you purchase a second home or lease a long-term rental on the Islands, there are plenty of fully furnished options to make your next move seamless and simple.

In Hawaii, houses are often purchased as part-time residences, vacation homes, or as rental property investments, and it's an important and a significant expectation for the buyer that the home be sold furnished. Additionally, the Islands are an ideal market for furnished homes because buyers from the mainland are not likely to have personal items shipped over and therefore, want furnishings readily available. While a primary residence is often decorated with heirlooms, personal collections, and other sentimental decor, this is rarely the case with a secondary home. So local interior designers and Realtors create interior styles that appeal to a variety of buyers and renters.

When outfitting a fully furnished home, it's imperative to think of all the details. That's when specialty interior companies shine. Ultimately, no matter which materials or colors are utilized, filling a house with furniture and accessories provides a potential buyer with the vision of a home. It's no longer an empty space with potential—the space has *realized* its potential. So whether the furnishings in a home are provided for rental purposes or included as part of a sale, it can be beneficial to include them. If you are considering selling your second home or high-end luxury estate, keep in mind that fully furnished properties garner extra attention. So out with your old, and in with your new. ■

Written by Maresa Giovannini

See more of this featured property and front cover home, presented by Joni J. Metzler, on pages 16 & 17.



“it’s imperative
to think of all
the details.”



COME FOR A VISIT,
STAY FOR A LIFETIME



Timbers Kaua'i at Hokuala is unlike anything on Kaua'i. There are just 47 residences, all offering an oceanfront location like no other on the island. Enjoy spectacular views, world-class amenities, farm-to-table dining and your own award-winning Jack Nicklaus Signature golf course. With both wholly-owned and fractional ownership opportunities available, Timbers Kaua'i takes care of you – not the other way around, so you can focus on building memories that matter the most.

timberskauai.com/luxury | 808.278.6454



TIMBERS KAUA'I

Ocean Club & Residences

TIMBERS COLLECTION | Aspen | Bachelor Gulch | Cabo San Lucas | Jupiter | Kaua'i | Kiawah Island | Maui | Napa | Scottsdale | Snowmass | Sonoma | Southern California | Steamboat | Tuscany | U.S. Virgin Islands | Vail

⌵ This advertisement does not constitute an offer to sell nor the solicitation of an offer to purchase made in any jurisdiction nor made to residents of any jurisdiction, including New York, where registration is required. Tower Kauai Lagoons LLC uses the Timbers Resort® Timbers Collection® and certain other Timbers brand names under a limited non-transferable license in connection with the sales and marketing of the Hokualea Kaua'i™ - A Timbers Resort® (the "Project"). If this license is terminated or expires without renewal, the Project will no longer be identified with nor have any right to use the Timbers® marks and names. All renderings depicted in this advertisement are illustrative only and may be changed at any time. All rights reserved.

\$8,800,000



LIFE ON LANAI AT HULOPOE BAY

**Hulopoe Bay, Lanai | 4,951 SQFT
1.2 AC | 4BR/4.5BA | MLS# 387833
\$8,800,000**

This alluring Estate is perched above Hulopoe Bay and Sweetheart Rock, Puu Pehe. A safe, sustainable sanctuary that feels a world away but is still in the US on the Covid-19 free island of Lanai. With commanding views of Hulopoe Bay, this serene gated estate features a carbon neutral home, mature landscaping and automated pool system. The private residence welcomes you with dramatic views of Maui and Kahoolawe from a living room with disappearing glass walls for the best of indoor-outdoor living. A master suite with private deck, walk-in closet with laundry, and large bath are the epitome of the tropical luxury. Dining and Resort amenities are available at the nearby Four Seasons Resort Lanai. A 40' fishing boat with slip at the Manele Harbor can also be included.



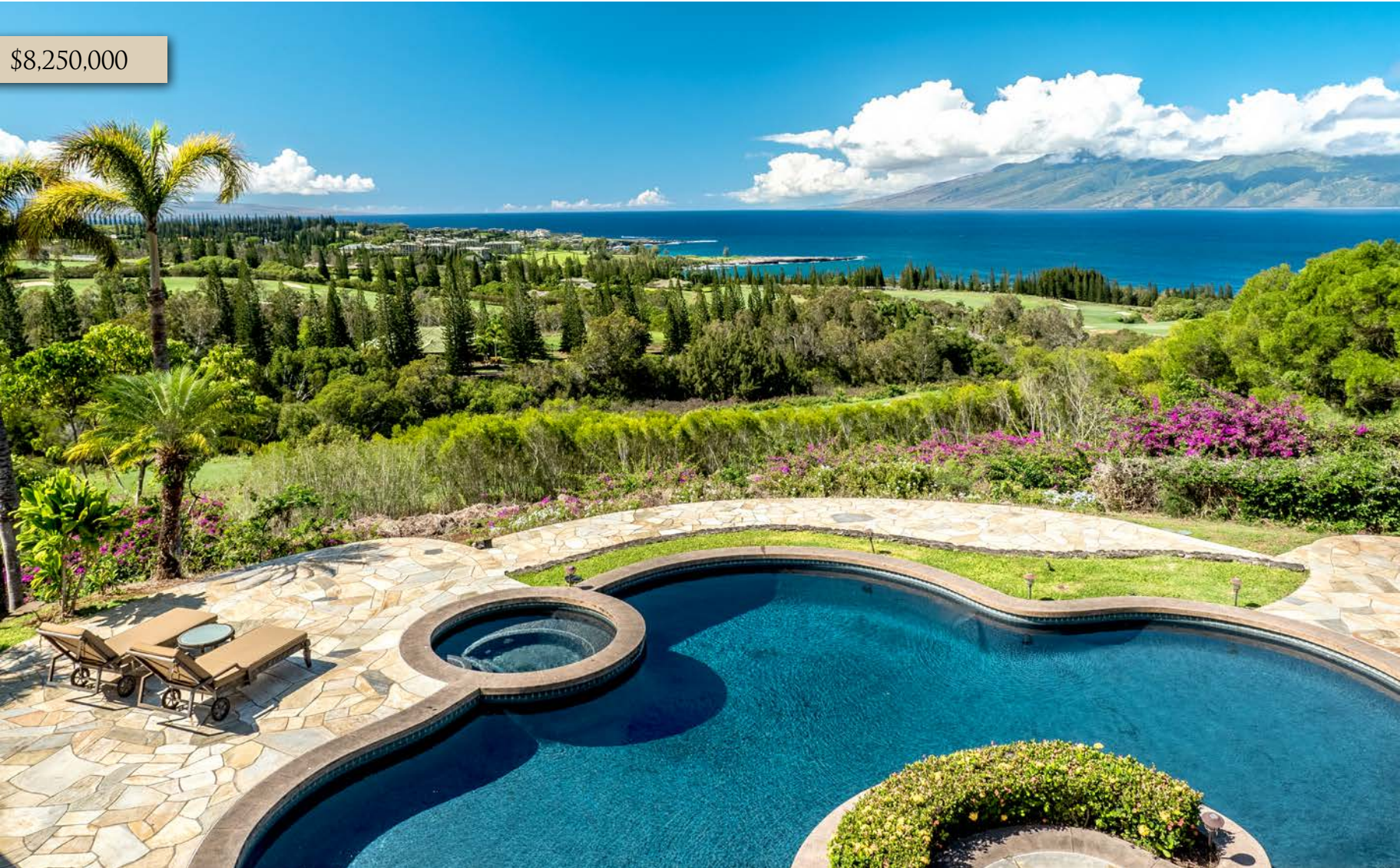
Nam L. Le Viet
R(S)-61810
Hawaii Life Real Estate Brokers
Direct: 808.283.9007
Email: nam@mauisold.com
Web: mauisold.com



Mary Anne Fitch
R(B)-15747
Hawaii Life Real Estate Brokers
Direct: 808.250.1583
Email: sold@maui.net
Web: soldmaui.com



\$8,250,000



218 PLANTATION CLUB DR

Kapalua, Maui | 7,267 SQFT | 2.19 AC
5BR/5.5BA | MLS# 388247 | \$8,250,000

Experience the majestic year-round sunset, ocean and island views of this magnificent home. This incredible residence sits on 2.19 acres of prime real estate perched above the 18th fairway over the renowned Plantation Golf Course at Kapalua. These gorgeous views can be enjoyed from every room and overlook five fairways to the ocean. Offering over 7,200 square feet of luxurious living space with five bedrooms and five and half bathrooms, it also features a glass fronted wine cellar, gourmet kitchen, exquisite dining room, and media room with sound system, including bar.
www.MauiHomeSales.com/218Plantation

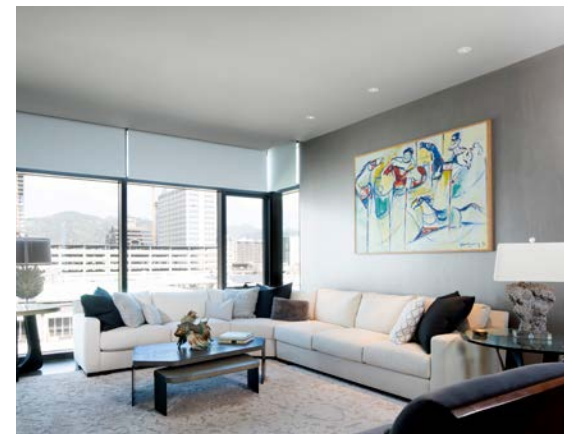
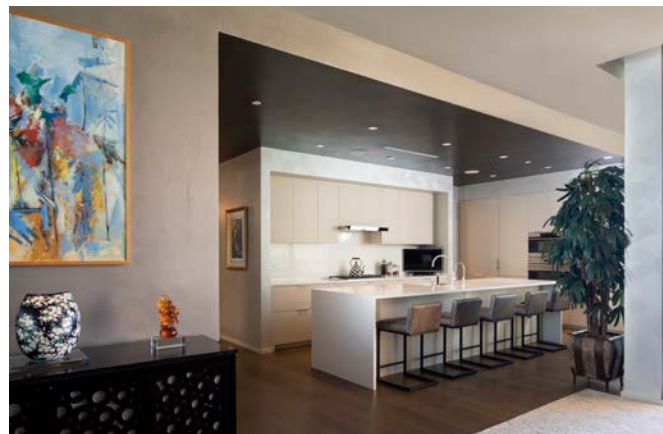


Robert R. Myers
REALTOR (S), SRS
Tel: 808.283.3067
Robert@MauiHomeSales.com
www.MauiHomeSales.com



For all the Maui listings check out my website:
www.MauiHomeSales.com
Including Interactive Maps of Kaanapali, Kapalua and Wailea

COLDWELL BANKER
ISLAND PROPERTIES



SKY RESIDENCE AT PARK LANE ALA MOANA

Honolulu, Oahu | 3,058 SQFT | 3BR/3.5BA
MLS# 202028244 | \$7,888,000

With direct ocean views, incredible mountain views and fronting Ala Moana Beach Park, Park Lane #7705 represents a single-family home experience in the sky. The quintessential “U-shape” design of the Sky Residences envelops a deep covered lanai, making the outdoor space a true extension of the home. This home includes upgrades including window coverings, luxury designer paint, designer closet systems and cabinetry, 2 parking stalls and a large storage room. Park Lane is a visionary project developed by the MacNaughton Group & Kobayashi Group on the ocean side of Ala Moana Center in Honolulu.



HAWAI'I LIFE

Forbes
GLOBAL PROPERTIES

Noel Pietsch Shaw

MBA, S. Realtor-Associate, RS-75888

HAWAI'I LIFE

EXCLUSIVE MEMBER OF

FORBES GLOBAL PROPERTIES

808.221.8889

noelshaw@hawaiilife.com





33 HANA HWY

Paia, Maui | 2,260 SQFT | 27,913 SQFT Land | 5BR/3BA | MLS# 390712 | \$7,800,000

Located in the timeless beachfront community of Paia sits a modern, stylish private beach home, with **170 feet** of sandy beachfront.

Enter through a private gate to this .67 of an acre compound. Once inside, your world shifts and slows down, as the transition to beach life begins. The main home is a modern and comfortable 4,300 sf beach home with a 1,000 sf Ohana.

Three miles of beach walks right from your front door. The covered lanai has sweeping Pacific Ocean views and is complemented by modern and cozy living areas, including a chef-style kitchen, clean white marble bathrooms, and a 3 car garage. This is a rare opportunity to be right in the heart of Paia and on a world-class white sand beach. Beautifully furnished and totally turnkey, just bring your bathing suit and surfboard.

\$7,800,000



COLDWELL BANKER | ISLAND PROPERTIES



Rhonda Smith-Sanchez

RB-22953

Maui's North Shore Specialist

808.205.2175

Rhonda@RhondaMaui.com

Rhondamaui.com



LuxuryHomeMagazine.com



21 KAULUA PLACE

Paia, Maui | 3,025 SQFT | 17,289 SQFT Land | 4BR/3.5BA | MLS# 392274 | \$7,500,000

In the quaint North shore coastal town of Paia, down an unpretentious lane, sits an oceanfront haven. The mindful gate, unique fire and water features, and custom entry door welcome you to a beautifully designed and intelligently curated home. Be captured by the serene ocean setting with a backdrop of the West Maui Mountains. Once inside the 2-lot property, experience the floral aromas and serenading bird songs that are unique to Maui's coastal living. The wide-open floor plan flows to the covered outdoor lanai, accentuating

the oceanfront lifestyle. This hale is mindfully positioned on well-manicured grounds, thereby ensuring solitude. Soft accents from a Lutron intelligent indoor-outdoor lighting system provide comfort and ease. The impressive infinity pool blends into the lush green rolling lawn bordered with hearty shrubbery meeting the beachhead. The pool and hot tub are positioned for you to enjoy the views of sunset hues and flickering lights from small towns on the West Maui Mountain range. This home offers Maui's best Northshore oceanfront lifestyle.

\$7,500,000



COLDWELL BANKER | **ISLAND PROPERTIES**



Rhonda Smith-Sanchez

RB-22953

Maui's North Shore Specialist

808.205.2175

Rhonda@RhondaMaui.com

Rhondamaui.com



\$7,300,000



HISTORIC MAKIKI
HEIGHTS ESTATE

Honolulu, Oahu | 5,715 SQFT
23,392 SQFT Land | 7BR/3.5BA
MLS# 202021667 | \$7,300,000

This one-of-a-kind property, on the Hawaii & National Registries of Historic Places, is a spacious Queen Anne-style 3-story, 7-bedroom, 3.5-bath estate that boasts a rich history as one of the oldest estates in Honolulu. Graystones Mansion is named for its 16-inch-thick gray-colored bluestone walls. California redwood wainscoting in the majestic grand staircase & living room, with stained-glass Palladian window; dining room & fern grotto; wraparound porch, manicured grounds, tiled pool. Fully restored in 1985, with its original integrity preserved. Own a piece of Oahu's history in this classic home with modern amenities & timeless grace.



Glen Fujihara
RB-13662
808.224.8909
Glen.Fujihara@LocationsHawaii.com



\$6,950,000



CUSTOM LUXURY LANIKAI ESTATE

Lanikai, Oahu | 6BR/6.5BA
6,217 SQFT | 11,987 SQFT Land
MLS# 202113515 | \$6,950,000

One of a kind, custom-built home by Architect William J. Benjamin. Panoramic Ocean and Mokolua island views. The home's design was built to flow cohesively with the environment and become a structural extension of the island without forgoing immaculate Luxury. This home has every amenity imaginable, including your own home theater as well as a 3-story elevator. Indulge yourself with spacious separate guest suites as well as a massive covered lanai w/built-in pizza oven. Heated infinity-edge pool with a stunning waterfall. Minutes from sandy beaches, swimming, snorkeling, paddle boarding, and kayaking. Come live your best life!



corcoran
PACIFIC PROPERTIES



Ruthie Kaminskis

Realtor-Associate
RS-78191

Ruthie@corcoranpacific.com

808.377.0443

RuthieKHawaiiHomes.com



\$6,285,000



41-435
KALANIANA'OLE
HWY

Waimanalo, Oahu | 6,486 SQFT
12,192 SQFT Land
7BR/5BA/2HLF BA
MLS# 202029343 | \$6,285,000

An iconic retreat on the beach! Located on the famed Windward Coast, and arguably the best oceanfront lot on this particular shoreline, this extraordinary property presents a rare opportunity. Offering ultimate privacy with nearly 200 linear feet of ocean frontage, no neighbor on the right side, and one of only 20 residences on this strip of coastline (one of which includes the former Magnum P.I. estate), spanning two levels serviced by an elevator, this 7 bedroom, 7,000 sq ft residence features soaring ceilings, a remodeled kitchen, 2 fireplaces, a pool, and a separate guest house.



Kelli Miller
RA
RS-79000
808.542.0882
Kellimiller@corcoranpacific.com
www.corcoranpacific.com

\$6,250,000



LOT 35 AT KOHANAIKI

Kohanaiki, Big Island | 1.28 AC
MLS# 637665 | \$6,250,000

Overlooking the 14th and 15th holes at the Kohanaiki Golf Club, Lot 35 offers stunning golf course and ocean views. The residential community and Kohanaiki Club are built around luxury, sustainability and world-class amenities. The Kohanaiki Club is a private equity club and membership is by invitation only to Kohanaiki Property Owners.



Joni J. Metzler
(R) B
Metzler Realty
808.640.6832
Joni@MetzlerRealty.com
www.MetzlerRealty.com





Breathing room, with a view.

HŌKŪLIʻA

Contact Hawai'i Life - Hokuli'a Sales

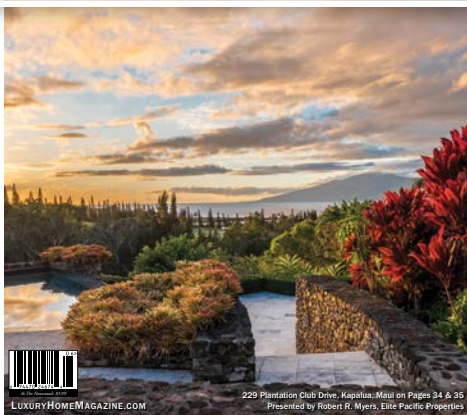
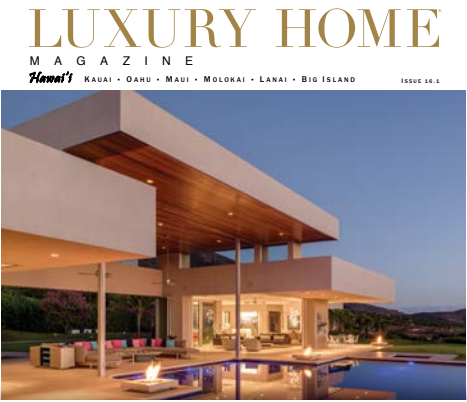
81-6636 Pu'u Ohau Pl., Kealakekua, HI 96750 | (808) 731-4354 | Hokulia@HawaiiLife.com

Hokulia.com



Experience Hokuli'a, the Kona Coast's most spacious and private residential club community designed for active, health-conscious adventurers and avid golfers. At Hokuli'a, you'll enjoy unsurpassed resort amenities at the exclusive Club at Hokuli'a, a world-class Jack Nicklaus Signature golf course, and plenty of space to gather, celebrate or simply unwind.

Hokuli'a homeowners enjoy 1,260 uncrowded acres to roam free and relax. A peaceful shoreline park features on-site hiking trails, picnic areas, a canoe landing, and ocean activities at Nawawa Bay.



GET LUXURY HOME MAGAZINE *Delivered* TO YOUR DOOR

An annual subscription
is just a click away.

SUBSCRIBE

pacificluxuryliving.com/subscribe



\$5,990,000



59-319 KE NUI ROAD

Haleiwa, Oahu | 2,682 SQFT | 7,467 SQFT Land
6BR/5BA | MLS# 202112393 | \$5,990,000

This is the beach house you've been waiting for, 4 houses away from Ehukai Beach Park on a wide sandy beach. This stunning property fronts amazing world class surf and a sandy beach for the whole family to enjoy. A beautifully maintained home with a newly built legal ADU for income or for the extended family. Featuring a modern kitchen, renovated baths, a wide open layout, and a large covered lanai to enjoy the ocean view. Rinse off in the custom outdoor shower and store your beach toys in the large garage. Come live the beach life you've dreamed of!



Tony Kawaguchi

RB-21841, RS-66616

808-351-9795

tony@alohatony.com

www.alohatony.com







128 MAKAHIKI ST.

Spreckelsville, Maui | 2,934 SQFT | 2.001 AC | 4BR/3.5BA | \$4,800,000

Step into an island lifestyle with this splendid retreat touched by the sounds of the trade winds and swaying palms. In the center of the maturely landscaped 2 acres sits a well-appointed 4-bedroom single-level home executed by a premier builder of Hawaii. As you enter, you first experience the warmth of the wood floor balanced with high ceilings and central AC. A step farther, your eyes travel through the large glass sliders out to the beauty of the 48ft long saltwater pool and waterfall. On the east side of the home is a gorgeous primary bedroom with a spacious romantic modern spa ensuite.

The home's west side provides 3 private bedroom suites and a library all leading out to the inviting pool areas. Enjoy a polished chef's kitchen of new high-end appliances. The creative and industrious will appreciate the standalone workroom and separate office space. Well-water provides for irrigation and the home uses a county water meter. The entire enclave sits unpretentiously in one of the most esteemed beachy neighborhoods on Maui's north shore, Spreckelsville.

 **COLDWELL BANKER** | **ISLAND PROPERTIES**



Rhonda Smith-Sanchez

RB-22953
Maui's North Shore Specialist
808.205.2175
Rhonda@RhondaMaui.com
Rhondamaui.com



SOLD



HIGHEST SALE IN KANEOHE

Kaneohe, Oahu | 6,005 SQFT
16,817 SQFT Land | 4BR/6.5BA
MLS# 202108830 | \$4,700,000

Highest recorded sale on Kaneohe Bay. Nestled on a quiet cul-de-sac adjacent to Kaneohe Yacht Club, this stunning residence was designed for entertaining. The 6,000+SF of living space centers around a striking spiral staircase that transcends three floors overlooking Kaneohe Bay. There are two spacious master bedrooms on the third floor, an open concept living room, dining area, kitchen, and powder room on the main floor, and a great room with wet bar, study, guest bedroom, and private in-law suite. The expansive lawn flows to a bayside pavilion with infinity edge pool overlooking a secluded lagoon with boat dock and ramp.



Alex Watson

Partner | Realtor-Associate
RS-78706
Hawaii Sands Realty
awatson@hawaiisands.com
808.725.2521

Luxury Real Estate & Property Management



HAWAII SANDS REALTY
Portfolio Properties

Dave Moyer

Principal Broker | Realtor
RB-18853
Hawaii Sands Realty
dmoyer@hawaiisands.com
808.379.3016



\$4,650,000



UPCOUNTRY MODERN RETREAT

Kula, Maui | 3,933 SQFT | 5.063 AC
3BR/3.5BA | MLS# 391558 | \$4,650,000

Architect-designed with privacy in mind, while taking advantage of stunning 360° views, this handsome, gated Kula home was custom-built with attention to comfort & convenience. Perched at 1600 ft., this remarkable home features, 9' ceilings & a massive great room with 45' of 9' tall glass pocket sliders facing the magnificent view. It boasts an 800 sf "flex" room, a walk-through media room, a duel-sided fireplace, marble slab counter tops & radiant-heat polished floors are comfortable in any season. Positioned to avoid the wind, the lanai leads to a heated salt-water pool, motorized pool cover for safety, outdoor shower & spa with a 'Baja Shelf' for lounging. This energy-efficient, modern home is an impressive & unique offering.



Raphael Wellerstein

R(B) in Hawaii and Washington
808.385.3992
Raphael@windermere.com
RaphaelonMaui.com



Riette G. Jenkins

Managing Director of Global Luxury
Realtor-Broker, RB-17543
808.870.4073
riette@waileahawaii.com
waileahawaii.com



COLDWELL BANKER
ISLAND PROPERTIES



\$3,999,000



1010 WILDER AVENUE #1701

Honolulu, Oahu | 2,737 SQFT
3BR/3BA | MLS# 202111750
\$3,999,000

Exceptionally remodeled modern condo in the coveted Punchbowl high-rise 1010 Wilder, one of the BEST locations in Honolulu! This 3 Bed, 3 Bath condo was meticulously remodeled in 2018 and transformed to a luxury oasis overlooking Honolulu complete with panoramic Diamond Head views spanning from the mountains to the sea and tropical cross-breezes. Interior finishes include wide-plank white oak flooring, a designer kitchen/bar with custom Leichtit European cabinetry, Miele appliances, Master w/ walk-in closet, deep soaking tub, recessed designer art lighting, and expansive 10 ft. ceilings. Two parking spaces.



Noel Pietsch Shaw
MBA, S. Realtor-Associate, RS-75888
HAWAII LIFE
EXCLUSIVE MEMBER OF
FORBES GLOBAL PROPERTIES
808.221.8889
noelshaw@hawaiiilife.com



HAWAII LIFE

Forbes
GLOBAL PROPERTIES



\$3,900,000



2260 HO'OHU RD

Poipu, Kauai | 3,803 SQFT
15,246 SQFT Land
4BR/4BA/2Half BA
MLS# 647159 | \$3,900,000

Perched on a bluff 50 yards from the Pacific Ocean in sunny Poipu, this four-bedroom suite estate with unobstructed ocean views awaits the buyer. Imagine a home where the sounds of whales slapping their tails on the water and waves crashing on the bay rocks, drift into every room. Strategically situated on the 15,000+ sq ft corner lot to take advantage of Kauai's trade winds, the mature tropical trees and lava rock walls create the property's privacy. Located in the Poipu Beach Visitor Destination Area, the buyer may choose to vacation rent this home.



HAWAII LIFE

Forbes
GLOBAL PROPERTIES

Lori Decker
REALTOR SALESPERSON, BCOMM LL.B
RS-76459
Hawaii Life Real Estate Brokers
808.635.8777
loridecker@hawaiiilife.com



\$3,495,000



VILLA DE KAIMANU

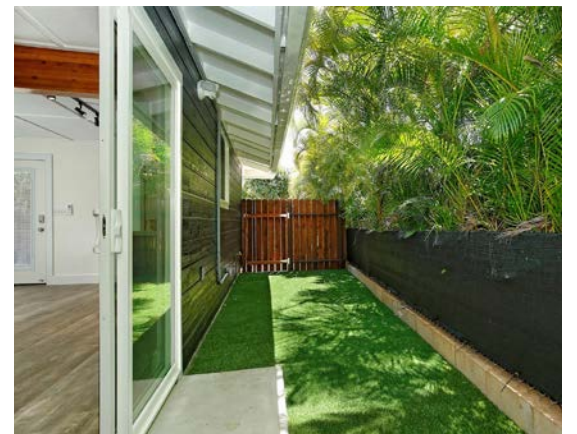
Kihei, Maui | 3,276 SQFT
2.06 AC | 2BR/3.5BA
MLS# 390252 | \$3,495,000

This beautiful estate surrounded by lush tropical landscaping is one of 9 hidden gems located in the exclusive gated community of Kaimanu Estates. A Mediterranean inspired villa with ocean, mountain views and surrounded with an abundance of tropical fruit trees. The private oasis garden is close to an in-ground pool and two ponds with Koi fish and lilies. The home has a bright and spacious living area with a lower sitting space and a great entertainment patio equipped with an outside kitchen with a real pizza oven. This is the lowest priced 2+ acre estate you will find in all of South Maui!



Yvienne M. Peterson
REALTOR®(S) RS57071 | 22 years Licensed in Hawaii
Keller Williams Realty Maui
Premier Global Partners Hawaii
Founder | Lead Agent
808.344.5575
Yvienne@PremierGlobalPartners.com





3036 MONSARRAT AVENUE

Honolulu, Oahu | 2,873 SQFT
8BR/6BA | MLS# 202117832 | \$3,200,000

Location, location....along with an amazing opportunity to own a home with enough room for everyone! This home offers the rare opportunity for true multi-generational or extended family living. Recently beautifully and thoughtfully renovated with new windows, doors, luxury vinyl plank flooring, roof, Daikin split A/C's, kitchen and bathrooms; you can move right in. With more people working at home, you'll love the room for more home offices and home schooling. Take advantage of our wonderful Island lifestyle with easy access to restaurants, Kapiolani Park, Diamond Head, Waikiki, the beach and ocean activities!

corcoran
PACIFIC PROPERTIES

Jeffrey M. Fox
(R) CLHMS, CRB, CRS

Corcoran Pacific Properties
RB-17230
808.292.5333

Jeffrey.Fox@corcoranpacific.com





UNDERSTATED POPS OF COLOR AND PATTERN LET THE VIEW SHINE.
SEE PAGE 53

\$3,199,000



ONE ALA MOANA PH #2200

Ala Moana, Oahu | 2,651 SQFT | 3BR/3BA
MLS# 202109919 | \$3,199,000

This luxurious penthouse offers breathtaking ocean and mountain views from an expansive, open floor plan with 10-ft high ceilings. This 3-bed, 3-bath home features his/hers walk-in closets, a large wine chiller, convection and steam ovens, laundry room with a separate service entrance, and 2 parking spots. This property truly feels like a single-family home. Enjoy the resort-like amenities such as a rooftop terrace, golf room, spa treatment, theater room, gym, infinity-pool and hot tub, several barbecue areas, jogging paths, and more. ONE Ala Moana is conveniently located above Ala Moana Center and just minutes away from restaurants, entertainment, and Ala Moana Beach Park.



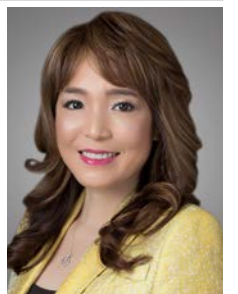
List

Sotheby's
INTERNATIONAL REALTY



Esther H. Park

REALTOR®, Senior Vice President
ABR CHMS CRS GRI SRS, RB-21002
808.489.6733
esther.park@sothebysrealty.com
한국어 서비스 가능





75-881 HIONA STREET

Holualoa, Big Island | 4,458 SQFT | 3 AC | 3BR/4.5BA | MLS# 650747 | \$3,150,000

75-881 Hiona, a classic Holualoa estate on over three acres that ensures privacy, tranquility and an experience like no other. Nestled amongst majestic monkey pod trees, numerous palms, producing fruit trees and rare ornamentals, the beauty of Hawai'i artistry is embraced and resonates. Design excellence and incredible craftsmanship blend the interior and exterior flow into an experience that is true island elegance and accentuates the enchanting ocean views at this 1100 ft

elevation. Three bedrooms, four and a half baths, office, study, 70ft pool, bonus pool house living area, oversized lanai that offers multiple entertaining options, with so much more to discover! When you are ready to live in one of the most exquisite properties in Holualoa and experience the peace of this majestic property, 75-881 Hiona St awaits.



\$3,150,000



COLDWELL BANKER
ISLAND PROPERTIES



Marco A. Silva

REALTOR®, Broker, RB-20599

808.557.8921 | Marco@KonaLuxuryRealEstate.com

KonaLuxuryRealEstate.com

Certified Luxury Home Marketing Specialist®

Certified Residential Specialist | Certified Negotiation Expert

2019 Top PERFORMER® Hawaii Business Magazine

2017 Top 100 REALTOR® Hawaii Business Magazine

2016 Top 100 REALTOR® Hawaii Business Magazine



LuxuryHomeMagazine.com

\$2,895,000



NAMASTE ESTATE

Naalehu, Big Island | 3.080 SQFT
47.5 AC | 3BR/3.5BA | MLS# 649683
\$2,895,000

Privately located on 47+ acres in Pahala, this truly unique listing has stunning views of the shoreline, Mauna Loa and South Point. The property's 1/2 mile of oceanfront provides viewing of breaking waves, sea turtles, dolphins, and whales. A gate house entry into the home's courtyard with a waterfall garden and pond leads to the dramatic 8 foot Nepal hand carved door guarded by two Nepali bronze lions. This distinctive, open design home has 4 bedrooms, 3 and 1/2 baths. The home includes 6 lanais, taking every opportunity to showcase the views and ocean breezes. Attached is an oceanview one bedroom, one bath guest house with an ocean facing lanai.



Donna Duryea
R(S) 62459, CRS, GRI, ABR
808.987.4511
donna@theduryeagroup.com
www.theduryeagroup.com

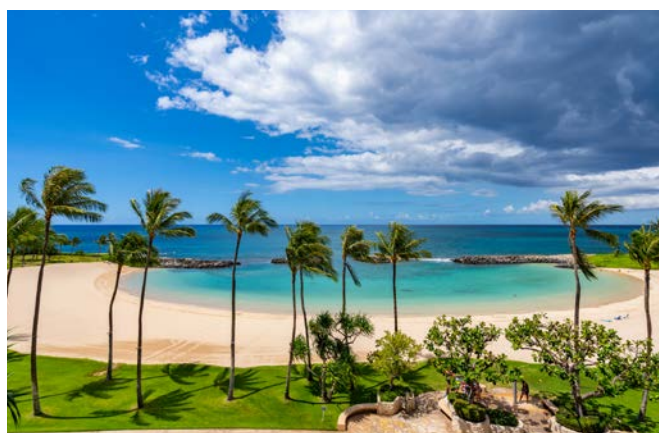


COMPASS

Meg Saunders
R(B) 19200
808.895.3147
meg@theduryeagroup.com



\$2,295,000



KO OLINA RESORT 11TH FLOOR LUXURY

Kapolei, Oahu | 1,187 SQFT
2BR/2BA | MLS# 202112702 | \$2,295,000

Premium 11th floor "Penthouse" luxury condo at Beach Villas at Ko Olina with panoramic beach, ocean and sunset views. This professionally decorated 2-bed 2-bath Villa is offered as a fully furnished turnkey LEGAL (licensed) short-term vacation rental with strong six-figure rental history and future bookings. Custom pocket lanai doors lead to the ocean-facing balcony, seamlessly blending indoor-outdoor living. Bedrooms feature golf course, mountain and sunrise views. On-site amenities include 2 pools, 3 whirlpool spas, beach bar, built-in BBQ grills, owner's lounge and private fitness center. Convenient proximity to the beach, shopping, dining and entertainment. Includes covered deeded parking stall.



Munro Murdock

MBA, R(B) #RB-22056

Love Hawaii Realty

808.492.6242

Munro@LoveHawaiiRealty.com

www.LoveHawaiiRealty.com



SOLD ON MAUI



17 PUUWAI PLACE

Kihei, Maui | 2,616 SQFT
10,384 SQFT Land | 5BR/4BA
MLS# 391704 | \$2,200,000

Stunning and Spacious! A hidden and unexpected jewel nestled in the heart of Moana Estates. The ultimate location & private oasis sets this home apart! The lush tropical gardens in a terraced yard offers more than just fruit trees and serenity. Take a private dip in the jacuzzi, then meander up the outdoor stairs to the master bedroom and sink into the chairs or your bed to stargaze. Owned PV system, wired sound systems, security system, satellite dish, enclosed yard, work bench in garage, plenty of storage, FURNISHED, and a 2017 BMW X3 SUV (~5600 miles) like new/mint condition! This home is ready for you to move right in. Maui, It's a Lifestyle, it's time to make it a part of yours! Video at Vimeo.com/SoldOnMaui



Diane K. Pool
R(B)-17896, ABR, CRS
808.276.2004
diane@SoldOnMaui.net
www.SoldOnMaui.net





\$2,075,000



4100 QUEEN EMMA DR #17

Princeville, Kauai | 2,864 SQFT
3BR/3.5BA | MLS# 649169
\$2,075,000

Ka'iulani of Princeville is a low-density luxury residential community consisting of 77 attached homes located on a peninsular bluff surrounded by beautiful mountain, ocean, and golf course views. The upscale design, finishes, and amenities responds to an overwhelming demand for a single-family home lifestyle in a condominium setting. Kaiulani #17 is positioned for privacy and demands captivating ocean to mountain views through its floor to ceiling wall of windows, taking in the magnificent morning sunrises and illuminating moon lit skies at night.



corcoran
PACIFIC PROPERTIES



Donna Rice
R(B), THE RICE LUXURY GROUP, RB-17725
(808) 651-2840
donna@hawaii-property.com
www.hawaii-property.com



\$1,900,000



A RIVER RUNS
THROUGH IT

Papaikou, Big Island | 20 AC
MLS# 652143 | \$1,900,000

Dream home site! Concealed entry to a secluded enclave, 20 lush acres, previous Macadamia orchard, deep soil with sweeping ocean and river views. River meanders through out the property into the ocean. Mesmerizing waterfall and two large, deep swimming ponds.



Eileen Lacerte
REALTOR® Broker/Owner
808.989.1862
eileen@betterislandlifestyle.com





\$1,350,000



HORSESHOE TURN ROAD ESTATE

Kailua-Kona, Big Island | 3,272 SQFT
31,625 SQFT Land | 3BR/3.5BA
MLS# 651256 | \$1,350,000

Elegant estate on Horseshoe Turn Rd a private road three miles from Kailua Village. Impressive tropical landscaping with Koi and lily ponds, avocado, mango, papaya, banana, coconut trees, and the heavenly scent of the Puakenikeni flowers. Mid-century design with large living spaces and high ceilings throughout. Two additional dining or family spaces. Features security system, wood burning lava rock fireplace, large windows and lanai spaces with ocean, garden, and sunset views throughout. Grassy areas, lower garden level plumbed for expansive pond and waterfall with gazebo. No Homeowner Association.

**DISTINCTIVE
COLLECTION**
by
**Better
Homes
and Gardens**
REAL ESTATE®



Renée H. Kraft
REALTOR® RB-23004
Better Homes and Gardens Real Estate | Island Lifestyle
808.345.2108
renee@searchhawaiiproperty.com
www.SearchHawaiiProperty.com



\$1,300,000



180 DEGREE
SPECTACULAR
OCEAN VIEW

4.75 AC | MLS# 633546 | \$1,300,000

Rare acreage on the South Side of Kauai. 4.75 acres of manicured land with spectacular ocean views overlooking the Poipu shoreline and the forbidden Island of Niihau. Minutes to beautiful beaches, first class golf, fine dining and airport, yet you are above the fray at 1,100 ft elevation looking only at tropical vegetation, blue sky and ocean. Driveway is paved, water and electricity to the lot. You are ready to build your dream home on Kauai. Wake up to the sun rising in the east over the ocean and end your day with a setting sun over Niihau on the west side. This is a uniquely beautiful property that must be seen to be truly appreciated.



F. Lee Morey
PB, Lic.# 15886
F. Lee Morey, BROKER/REALTOR®
2-2514 Kaumalii Hwy, Ste. 216
Kalaheo, HI 96741
808.651.6720
f.leemorey@gmail.com
www.fleemoreybroker.com

Invest In Your Dreams





\$1,225,000



REMODELED
COASTAL-STYLE
PRINCEVILLE HOME

Princeville, Kauai | 1,310 SQFT
7,430 SQFT Land | 3BR/2BA
MLS# 651885 | \$1,225,000

Remodeled single-level 3BD/2BA Princeville home with a crisp white interior, natural light, soft tones, and a clean aesthetic feel. This coastal-style home features an open concept layout and vaulted ceilings. The entire home has been refreshed with upgraded details throughout, including Piazza Montagna tile flooring, new countertops, fixtures, and 30-year roof. Enjoy the neighborhood feel of Milimakani Place, a petite cul-de-sac off of quiet, residential Albert Road. The home's tropical landscape and patio area is a perfect space to relax. Located in Princeville, this contemporary home is perfect as a primary, secondary or vacation rental home.





HAWAI'I LIFE



Gabriela Da Luz

Realtor Salesperson
RS-81569
Hawaii Life
808.278.3315
GabrielaDaLuz@HawaiiLife.com
HawaiiLife.com



LUXURY IS CAPTIVATING

When your property is expertly marketed and displayed on hundreds of websites worldwide, it's going to get noticed.

730 Lower Kimo Dr, Kula | MLS# 389258



EXPERIENCE THE GLOBAL LUXURY DIFFERENCE



COLDWELL BANKER

**ISLAND
PROPERTIES**

EXCEPTIONAL PROPERTIES DESERVE EXCEPTIONAL AGENTS



Kurtis Becker
(808) 430-6785
REALTOR(S)



Karen Ostlie
(808) 937-1174
REALTOR(S)



Marco Silva
(808) 557-8921
REALTOR(B)



Derinda Thatcher
(808) 960-3433
REALTOR(B)



Carla Womack
(808) 896-6768
REALTOR(S)

BIG ISLAND



Byron Barth
(808) 212-5823
REALTOR(S)



Roberta Charles
(808) 652-2136
REALTOR(B)



Ilona Coffey
(808) 635-1495
REALTOR(B)



Brenda Crawford
(808) 651-8234
REALTOR(B)



Kelly Liberatore
(808) 639-2061
REALTOR(B)



Richard Shaw
(808) 639-0774
REALTOR(B)

KAUAI



Terry Alling
(808) 633-3382
REALTOR(S)



Max Blair
(808) 866-2334
REALTOR(S)



Karen I. Browne
(808) 344-1682
REALTOR(S)



Jan Bryan
(808) 214-7837
REALTOR(S)



Al Chiarella
(808) 276-7777
REALTOR(B)



Meghan Clair
(808) 463-8485
REALTOR(S)



Geoffrey Cook
(808) 281-6666
REALTOR(S)



Halleh Dunncliffe
(808) 269-8888
REALTOR(B)



Patrick Franta
(808) 280-7728
REALTOR(S)



Jolanta Frazier
(808) 283-6262
REALTOR(B)



Janice Goodnight
(808) 298-9678
REALTOR(S)



Erin Haywood
(808) 264-8037
REALTOR(S)



Linda Hedden
(808) 280-3054
REALTOR(B)



Addie Heiner
(808) 357-6980
REALTOR(B)



Gary Heiner
(808) 357-6981
REALTOR(S)



Kim Insley-Morrell
(808) 276-7766
REALTOR(S)



Riette Jenkins
(808) 870-4073
REALTOR(B)



Kristen Kingwell
(808) 281-7313
REALTOR(S)



Amy Lam
(808) 385-0768
REALTOR(S)



Wendy Macaheleg
(808) 269-1777
REALTOR(B)



Mike Marshall
(808) 495-8929
REALTOR(S)



Bruce McDonald
(808) 283-4189
REALTOR(B)



Gary Moors
(808) 891-8989
REALTOR(B)



Robert Myers
(808) 669-6565
REALTOR(S)



George Nunes
(808) 385-4665
REALTOR(B)



Marcus Nygren
(808) 463-5744
REALTOR(B)



Carol Olsen
(808) 298-5296
REALTOR(S)



Patty Sadler
(808) 280-4994
REALTOR(B)



Betty Sakamoto
(808) 870-7062
REALTOR(B)



Roy Sakamoto
(808) 870-7060
REALTOR(B)



Melissa Smith
(808) 298-6810
REALTOR(B)



Rhonda Smith-Sanchez
(808) 205-2175
REALTOR(B)



Peggy Lyn Speicher
(808) 495-3525
REALTOR(B)



Sherrie Stinger
(808) 283-8050
REALTOR(S)



Dano Sayles
(808) 280-6532
REALTOR(B)



Kento Tanaka-Tamaki
(808) 357-4219
REALTOR(S)



Daniel Toth
(808) 268-7614
REALTOR(S)



Jesse Wald
(808) 446-5841
REALTOR(B)



Jeff Walter
(808) 268-2566
REALTOR(S)



Lori Wash
(808) 250-9356
REALTOR(S)



Volker Weiss
(808) 280-6882
REALTOR(S)



Mardi Werner
(808) 250-1769
REALTOR(S)



Damien Zanolini
(808) 281-4669
REALTOR(S)



Sonya Zepeda
(808) 321-9910
REALTOR(S)

MAUI



A modern dining room with a large window overlooking the ocean at sunset. The room features a white dining table with six white chairs, a large potted plant on the left, and a wooden cabinet on the right. The view outside shows a beach, trees, and the ocean under a colorful sky.

LOVE HAWAII? LOVE THE BEACH?
live on the #1 beach in America

At the beloved Mauna Kea Resort are Hawaii's last and most spectacular oceanfront residences — absolute beachfront where you live steps to the water's edge. Don't miss your opportunity to live on the beach voted #1 in America. From \$3.25M to \$8.2M.

\$8,200,000



HAPUNA BEACH
RESIDENCE AT
MAUNA KEA RESORT

Mauna Kea Resort, Big Island
882 - 3,543 SQFT | 1BR/1BA -
4BR/4BA | MLS# 651297
\$2,750,000 - \$8,200,000

Introducing Hawaii's most extraordinary beachfront residence on Hapuna Beach at the beloved Mauna Kea Resort. Let nothing come between you and the sea, sand and sky. Let nothing come between you and the legendary destination that has defined island luxury for generations. A rare and historic opportunity to own what may be the last beachfront residence in the world so magnificently located. This BRAND-NEW beachy contemporary residence features European Oak wood flooring, high-end appliances, and upscale fixtures. Over 60% of the units have sold or are in escrow. Do not miss this rare opportunity to own this residence, steps away from one of the best white sand beaches in the world!



Tomoko Matsumoto
REALTOR® Principal Broker, Owner
Hapuna Realty
68-1330 Mauna Lani Drive, Suite 130 Kohala Coast, HI 96743
www.HapunaRealty.com | Tomo@HapunaRealty.com
808.557.8689





MODERN LUXURY WITH A SENSE OF OLD HAWAII IN PUAKO

Puako, Big Island
1.62 AC | 4BR/4.5BA
MLS# 647484 | \$8,950,000

Modern luxury masterfully blended with a sense of old Hawaii! Situated on one of the largest oceanfront lots in Puako, this meticulously maintained and beautifully furnished home is the epitome of elegance, sophistication and simple luxury. 350+ feet of beach front with ocean views from every room. Three anchialine pools provide natural irrigation to mature trees. This custom estate is suitable as a primary residence or getaway for respite in a resort-like, private setting. The tropical pod style house features a private guest wing with 2 oceanfront suites, wet bar, washer + dryer, conveniently connected to the main pod via a covered bridge.

Tomoko Matsumoto
 REALTOR® Principal Broker, Owner

Hapuna Realty

68-1330 Mauna Lani Drive, Suite 130 Kohala Coast, HI 96743

www.HapunaRealty.com | Tomo@HapunaRealty.com

808.557.8689



LUXURY HOME
MAGAZINE

HAWAII



WHERE ALOHA
IS AT HOME.

