

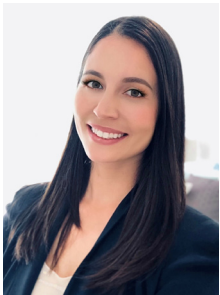
\$6,285,000



41-435  
KALANIANA'OLE  
HWY

Waimanalo, Oahu | 6,486 SQFT  
12,192 SQFT Land  
7BR/5BA/2HLF BA  
MLS# 202029343 | \$6,285,000

An iconic retreat on the beach! Located on the famed Windward Coast, and arguably the best oceanfront lot on this particular shoreline, this extraordinary property presents a rare opportunity. Offering ultimate privacy with nearly 200 linear feet of ocean frontage, no neighbor on the right side, and one of only 20 residences on this strip of coastline (one of which includes the former Magnum P.I. estate), spanning two levels serviced by an elevator, this 7 bedroom, 7,000 sq ft residence features soaring ceilings, a remodeled kitchen, 2 fireplaces, a pool, and a separate guest house.



**Kelli Miller**  
RA  
RS-79000  
808.542.0882  
Kellimiller@corcoranpacific.com  
www.corcoranpacific.com