

\$7,888,000



SKY RESIDENCE AT PARK LANE ALA MOANA

Honolulu, Oahu | 3,058 SQFT | 3BR/3.5BA | MLS# 202028244 \$7,888,000

With direct ocean views, incredible mountain views and fronting Ala Moana Beach Park, Park Lane #7705 represent a single-family home experience in the sky. The quintessential “U-shape” design of the Sky Residences envelops a deep covered lanai, making the outdoor space a true extension of the home. This home includes upgrades including window coverings, luxury designer paint, designer closet systems and cabinetry, 2 parking stalls and a large storage room. Park Lane

is a visionary project developed by the MacNaughton Group & Kobayashi Group on the ocean side of Ala Moana Center in Honolulu. Park Lane has expansive indoor-outdoor-living similar to the most sought after island homes combined with the services, amenities, security and ease of ownership of a luxury condominium development.



HAWAI'I LIFE

Forbes
GLOBAL PROPERTIES

Noel Pietsch Shaw

MBA, S. Realtor-Associate, RS-75888
HAWAI'I LIFE
EXCLUSIVE MEMBER OF
FORBES GLOBAL PROPERTIES
808.221.8889
noelshaw@hawaiilife.com



\$7,888,000



SKY RESIDENCE AT PARK LANE ALA MOANA

Honolulu, Oahu | 3,058 SQFT | 3BR/3.5BA | MLS# 202028244 \$7,888,000

With direct ocean views, incredible mountain views and fronting Ala Moana Beach Park, Park Lane #7705 represent a single-family home experience in the sky. The quintessential “U-shape” design of the Sky Residences envelops a deep covered lanai, making the outdoor space a true extension of the home. This home includes upgrades including window coverings, luxury designer paint, designer closet systems and cabinetry, 2 parking stalls and a large storage room. Park Lane

is a visionary project developed by the MacNaughton Group & Kobayashi Group on the ocean side of Ala Moana Center in Honolulu. Park Lane has expansive indoor-outdoor-living similar to the most sought after island homes combined with the services, amenities, security and ease of ownership of a luxury condominium development.



HAWAI'I LIFE

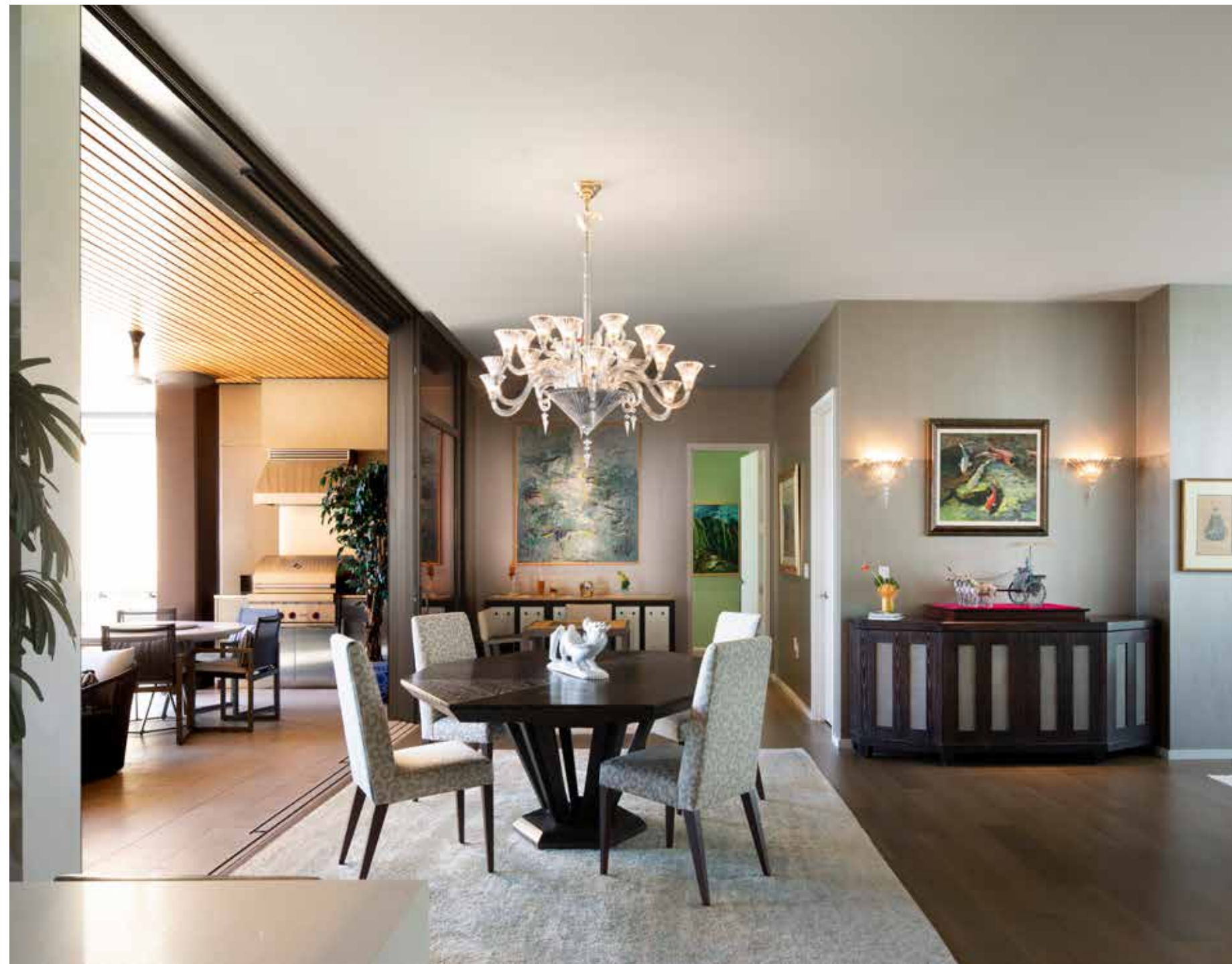
Forbes
GLOBAL PROPERTIES

Noel Pietsch Shaw
MBA, S. Realtor-Associate, RS-75888
HAWAI'I LIFE
EXCLUSIVE MEMBER OF
FORBES GLOBAL PROPERTIES
808.221.8889
noelshaw@hawaiilife.com





\$7,888,000



SKY RESIDENCE AT PARK LANE ALA MOANA

Honolulu, Oahu | 3,058 SQFT | 3BR/3.5BA | MLS# 202028244 \$7,888,000

With direct ocean views, incredible mountain views and fronting Ala Moana Beach Park, Park Lane #7705 represent a single-family home experience in the sky. The quintessential "U-shape" design of the Sky Residences envelops a deep covered lanai, making the outdoor space a true extension of the home. This home includes upgrades including window coverings, luxury designer paint, designer closet systems and cabinetry, 2 parking stalls and a large storage room. Park Lane is a visionary project developed by

the MacNaughton Group & Kobayashi Group on the ocean side of Ala Moana Center in Honolulu. Park Lane has expansive indoor-outdoor-living similar to the most sought after island homes combined with the services, amenities, security and ease of ownership of a luxury condominium development.



HAWAII LIFE

Forbes
GLOBAL PROPERTIES

Noel Pietsch Shaw

MBA, S. Realtor-Associate, RS-75888

HAWAII LIFE

EXCLUSIVE MEMBER OF

FORBES GLOBAL PROPERTIES

808.221.8889

noelshaw@hawaiiilife.com

