

LUXURY HOME[®]

M A G A Z I N E

Hawai'i KAUAI • OAHU • MAUI • MOLOKAI • LANAI • BIG ISLAND

ISSUE 17.3



LUXURYHOMEMAGAZINE.COM

Modern Beach House on Prized Honolulu Oceanfront
3047 Kalakaua Avenue by Tracy Allen, Pages 4 & 5



#3501 \$3,700,000

■ 3 BD, 3 BA, Net Living - 3,186 sf, Lanai - 75 sf
■ Views - Ocean, Mountain & City



#3502 \$2,100,000

■ 2 BD + Den, 2.5 BA, Net Living - 2,134 sf
■ Views - Diamond Head, Ocean, Ala Wai Canal, Manoa Valley, Mountain & City



#3503 \$2,000,000

■ 2 BD, 2 BA, Net Living - 2,015 sf
■ Views - Ocean, Mountain & City



#3504 \$3,850,000

■ 3 BD, 3 BA, Net Living - 3,225 sf
■ Views - Ocean, Mountain & City

WAIKIKI LANDMARK

PENTHOUSES AT WAIKIKI

Waikiki Landmark's prime location at the entrance of world-famous Waikiki welcomes you to the very best of urban island living. Waikiki Landmark features unique architecture with two, 38-story towers bridged together at the penthouse levels. There are 217 units in each tower, comprised of studios, one-bedroom, and two-bedroom units and each originally equipped with marble baths, a large Jacuzzi tub, a separate shower stall, and private lanais.

Building amenities include a car wash in the garage for residents' vehicles, large lap pool, a large adult spa, a very large pool with a waterfall, a children's pool and spa, a recently renovated cabana/entertainment area, and a brand-new fitness center and community room for exclusive use of residents. Great income properties. Zoning: X6 - Resort Mixed Use

For More info: info@jtchawaii.com



John "Jack" Tyrrell
President
Principal Broker, CRS, CRB
CPA (not in public practice)
Lic. # RB-19880
E: Jack@jtchawaii.com
C: 808.306.6933



May Lew Tyrrell 廖富溪
Executive Vice President
Broker-In-Charge, MBA, GRI, CRS, CRB, CIPS
Lic. # RB-22693
WeChat: Mayinhawaii (普通话)
E: May@jtchawaii.com
C: 808.223.3364





PENTHOUSE 3402 \$7,850,000

- 3 BD plus Den, 3.5 BA, Net Living - 2,763 sf, Lanai - 88 sf
- Views - Diamond Head, Ocean, Mountain, Ala Moana Beach Park & City

Experience a new level of luxury in this exceptional penthouse with expansive 13 ft ceilings, inviting incredibly breathtaking and picturesque views of Diamond Head and Ala Moana Beach Park. The interior is beautifully appointed featuring high-quality materials, while the 88 sf lanai allows you to step out and enjoy Hawaii's cool trade winds.

Enjoy Waiea's luxury resort-style amenities including poolside cabanas by the infinity-edged ocean-view pool and hot tub, outdoor barbeque pavilions, a state-of-the-art fitness center, luxurious spas, a library, movie theater, an ocean view bar, a chef's kitchen, and full-time resident specialists.

Time to Sell, Buy or Rent? Please Call 808 532 3330



WARD VILLAGE
Top Producing Agent by
Units & Dollar Volume
2014

WARD VILLAGE
Top Producing Agent by
Units & Dollar Volume
2015

For More Information:
808 532 3330
www.jtchawaii.com



Jack Tyrrell & Company



@jtchawaii



@jtchawaii

JACK TYRRELL
& COMPANY

A Real Estate Brokerage Corporation

* The information presented herein is provided as is, without warranty expressed or implied of any kind. Information herein deemed reliable but not guaranteed.



Cover Home



3047 KALAKAUA AVENUE

Honolulu, Oahu | 4,379 SQFT | 7,256 SQFT Land | 3BR/3.5BA | MLS# 202203111 | \$10,850,000

The Modern Plantation Beach House... Situated on one of the most prized oceanfront shorelines in all of Honolulu, rests this gorgeous 3-Bedroom, 3.5-Bath luxury home complete with an elevator. Beautifully renovated, this island inspired plantation home boasts striking modern day appointments including custom Mahogany wood details throughout & pocketing walls of glass

creating a seamless integration to the covered seaside lanai, plunge pool/spa & lovely tropical grounds beyond. The spacious Master Suite offers a relaxed seating area, private covered lanai, walk in closet & spa like bath with coastline views. Fully walled & gated, this home provides the ultimate location with direct ocean access to every imaginable water sport right at your back door! Simply magical!



\$10,850,000



**COLDWELL BANKER
REALTY**



TA

TRACY ALLEN
LOCAL EXPERTISE | GLOBAL REACH



© 2022 Coldwell Banker Realty | 1314 S King Street, 2nd Floor Honolulu, Hawaii
96814 | (808) 596-0456 The information contained herein,
while not guaranteed, has been obtained from sources believed to be reliable. All
square footages are approximate and may differ from the tax records.

Tracy Allen

Vice President, RA, RS-46610
Global Luxury Ambassador
Luxury Property Specialist
808.927.6415

Tracy@CBRealty.com

www.TracyAllenHawaii.com

#1 Agent in Hawaii, Coldwell Banker Realty



LuxuryHomeMagazine.com

\$9,650,000



637 PANA PLACE

Honolulu, Oahu | 7,586 SQFT
18,136 SQFT Land | 5BR/3.5BA
MLS# 202202769 | \$9,650,000

Resort Living on the Slopes of Diamond Head... truly a resort within itself, this sprawling 5 BD + gym residence situated on an oversized parcel of 18,136 Sq Ft, offers a sought-after location. Wake each day to mesmerizing sunrises & wrap around panoramas of lush green mountain ranges & spellbinding Pacific Ocean seascapes. An expansive floor plan w/ both formal & casual entertaining spaces seamlessly connects to the large outdoor covered lanai with BBQ pavilion, sun deck w/ tiled pool & spa & outdoor gardens. Conveniently located to nearby beaches and popular surf spots, hiking trails, parks, golfing, restaurants, shopping & so much more!



Tracy Allen
Vice President, RA, RS-46610
Global Luxury Ambassador
Luxury Property Specialist
808.927.6415
Tracy@CBRealty.com
www.TracyAllenHawaii.com
#1 Agent in Hawaii, Coldwell Banker Realty

TA
TRACY ALLEN
LOCAL EXPERTISE | GLOBAL REACH



**COLDWELL BANKER
REALTY**



© 2022 Coldwell Banker Realty | 1314 S King Street, 2nd Floor Honolulu, Hawaii 96814 | (808) 596-0456 The information contained herein, while not guaranteed, has been obtained from sources believed to be reliable. All square footages are approximate and may differ from the tax records.


SOLD


SOLD: KA'ANAPALI ALII UNIT 4-504

**Kaanapali, Maui | 1,643 SQFT
2BR/3BA | MLS# 394373
\$4,300,000**

Now available for your personal ownership, Ka'anapali Alii Unit 4-504 is the highly desired location you've been waiting for. This luxurious beachfront residence includes a spacious floor plan with two bedrooms, two bathrooms and a den. Meticulously maintained and held for personal use only, this elegant condominium features travertine flooring, custom cabinetry, granite countertops and modern Kitchen Aid Stainless Steel appliances. With sprawling ocean views from every room and an expansive lanai overlooking Ka'anapali Beach along with the picturesque islands of Lana'i and Moloka'i, this rare offering is not to be missed.



Leah Harbottle

Realtor®-Broker, Lic. #22910
Cell: 530.906.9180
Toll Free: 866.661.7887
Fax: 808.661.8358
Leah-Whalers@KW.com
www.KaanapaliLuxuryLiving.com

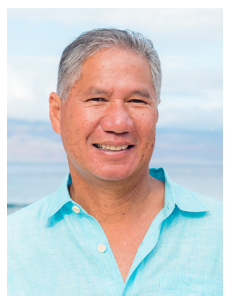


Gregory Harbottle Inc. R (PB)

Luxury Property Specialist, Lic. #19615

Cell: 808.385.8059
ghthkh@msn.com

www.KaanapaliLuxuryLiving.com



ISSUE 17.2

INDEX



* Founding or Prestigious Member



FRONT COVER HOME

Sophisticated Hawaiian Luxury, Kahakai 25
Pages 12 & 13
Photography by Mike Helfrich

LUXURY HOME MAGAZINE®
PACIFIC LUXURY LIVING™

501 Fourth Street, #854
Lake Oswego, OR 97034

Phone: 808.499.5491

FOR ADVERTISING INFORMATION VISIT:

luxuryhomemagazine.com
info@lhmhi.com

*The most comprehensive and targeted
distribution in the area, bar none!*

LHM Media Group

Phone: 916.458.6010
info@lhmmediagroup.com
LuxuryHomeMagazine.com

Visit Our Blog:
LuxuryHomeMagazine.com/blog

Chief Executive Officer
Solar Hing

Chief Operations Officer
Jessica Hing

Publishing Opportunities
publishing@lhmmediagroup.com

Published six times per year

©2022 LHM Media Group

Luxury Home Magazine®, Luxury Living and Lifestyle™ and LuxuryHomeMagazine.com are protected trademarks of LHM Media Group. Publisher is an authorized Independent Distributor and Licensee for a market specific area of Luxury Home Magazine®, Luxury Living and Lifestyle™ and LuxuryHomeMagazine.com. Publisher is licensed through LHM Media Group. LHM Media Group is not responsible for the contents of the magazine or the acts or omissions of the publisher or its representatives and makes no representations or guarantees. Reproduction in whole or in part (including materials, photos and formats) in any form without written permission from LHM Media Group is prohibited. All submissions become the property of LHM Media Group and may be used in any print, digital, social and online media. All rights reserved.

The information contained in *Luxury Home Magazine®* is deemed reliable, but not guaranteed. Contact each individual agent to verify information, which is subject to change.



Made and Printed in the USA.

THE BIG ISLAND

Donna Duryea*	63
Eileen Lacerte*	55
Frank Schenk	9
Hapuna Beach Residences	72-73
Hokuli'a	24-25
Joni J. Metzler*	33, 54
Kohanaiki	Cover, 12-13
Ma'ata Tukuafu	48
Margery Mayo	57
Meg Saunders	63
Nic Schenk	9
Philip Fukushima	41
Renée H. Kraft	61
Tomoko Matsumoto*	74-75
Yvonne Khouri-Morgan*	35

THE ISLAND OF MAUI

David W. Richardson	14
Diane K. Pool*	37
Gregory Harbottle Inc.*	7
Josh Jerman	53
Kenneth M. 'Ken' Hayo*	69
Leah Harbottle*	7
Mary Anne Fitch*	21, 23
Nam L. Le Viet*	21, 23
Rhonda Smith-Sanchez	38-39, 50-51
Robert H. 'Robbie' Dein*	69
Robert R. Myers*	45
Tim Stice	53

THE ISLAND OF OAHU

Akimi Mallin	26
Ashley Clagstone	47
Beth Chang	30
Erik Hinshaw	16, 19
Esther Park Kusunoki	62
Jeanne Frace	43
John "Jack" Tyrrell*	2-3,
Karen Chang Lar Rieu	27
Marti Hazzard*	47
Matt Beall	16
May Lew Tyrrell*	2-3, 60
Noel Pietsch Shaw	49
Sachi Braden*	56
Tracy Allen*	4-5
Valerie Chan	46

THE ISLAND OF KAUAI

Hannah Sirois	29, 32, 42
Jeff Skinner	22
Makahū'ena Estates	28
Neal Norman	11, 15, 17, 31, 40, 52
Suzanne M. Harding	22
Timbers Kaua'i	18

BUSINESS PARTNERS

Arquitectura, LLC	44
Coldwell Banker Island Properties	70-71
Corcoran Pacific Properties	34
Hummingbird Cay, Bahamas	64-67
Indich Collection	20
Padilla Designs, LLC*	10
The Agency	68
Ventus Design	36



Join
us in
2022

ISSUE	DEADLINE	CIRCULATION
17.3	05/04/22	06/10 - 08/11
17.4	07/06/22	08/12 - 10/13
17.5	09/07/22	10/14 - 12/13
17.6	11/02/22	12/14 - 02/24



72-393
KAUPULEHU DR

Kailua-Kona, Big Island | 11,176 SQFT
1.90 AC | 7BR/8Full/2HalfBA
MLS# 654138 | \$38,000,000

The largest custom estate located at the top of Hualalai Resort with expansive views of the entire resort, coastline and the ocean. Offers unobstructed views and seasonal sunsets with no rooftops blocking the views. Overlooking 2 holes of the member-only Tom Weiskopf Ke'olu Championship Golf Course and 3 holes of the Resort's Jack Nicklaus Championship Golf Course straight out to the Pacific Ocean. This majestic property is a rare opportunity to come available. 7 bedrooms, 8 full bathrooms, 2 half bathrooms, 2 full kitchens, a theater, a workout facility complete with locker room, sauna, steam room and a massage area.



Nic Schenk
Realtor Salesperson
808.896.9899
nic@aloha77.com
MaunaKeaRealty.com



Frank Schenk
Realtor Salesperson
808.896.9997
frank@aloha77.com
MaunaKeaRealty.com



Aloha from Maresa

Say Aloha! Send editorial & advertising inquiries to info@lhmhi.com



Spring is a lovely, albeit transitional, time. You’ve likely spent the first couple months of the year enthused with new goals and successes, and your energy might be starting to wane. But don’t let a seasonal slump slow you down. Take this time to refresh your personal and professional to-do lists with a bit of spring-cleaning. Remove the clutter and focus on the things that serve you, make you smile, and help you reach your goals.

If one of your goals is nabbing an oceanfront getaway in Hawaii, look no further than this issue’s cover home. Kahakai 25 in the community of Kohanaiki, pairs thoughtful craftsmanship with exquisite details that welcome all the pleasures of indoor-outdoor Kona living and entertaining. For more information on this stunning Big Island dwelling, presented by Kohanaiki Realty LLC, turn to pages 12 and 13.

Thank you for taking the time to pick up the magazine, read this note, and share some Aloha. We appreciate you!

Mahalo,
Maresa Giovannini
Maresa Giovannini
Editor in Chief



Hokulua, pages 24-25

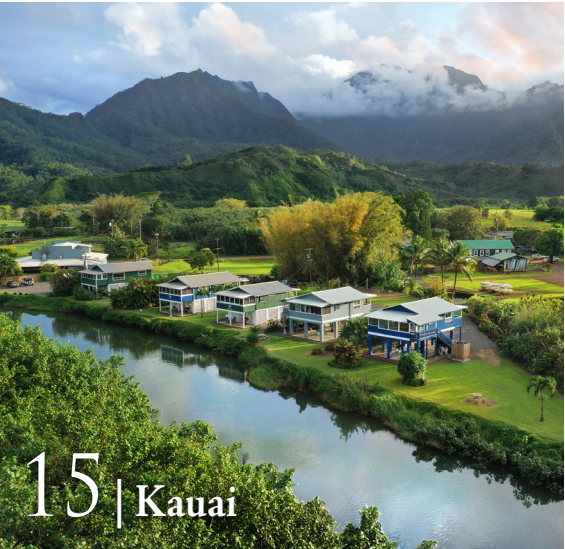
IN THIS ISSUE



53 | Maui



32 | Oahu



15 | Kauai



12 | Big Island

Lucky We Live Hawaii

GET

LUXURY HOME
MAGAZINE

Delivered TO YOUR DOOR

An annual subscription
is just a click away.

SUBSCRIBE



pacificluxuryliving.com/subscribe



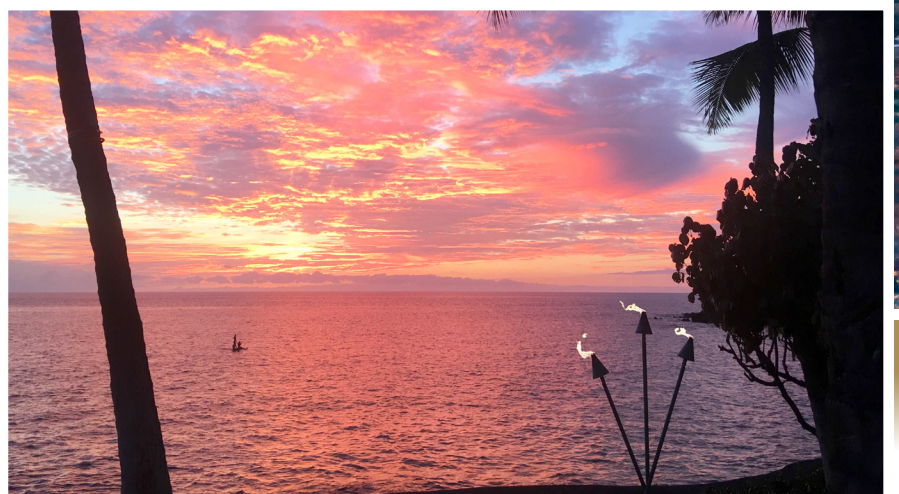
SERVING ALL HAWAIIAN ISLANDS & BEYOND

808 879 0938



PLEASE VISIT OUR GALLERY
padilladesigns.com

PHOTO CREDIT: J.ANTHONYMARTINEZPHOTOGRAPHY



HA'IKAUA POINT ESTATE

Kona, Big Island | 1.32 AC | 7BR/13BA (4 Homes) | MLS# 649077 | \$27,740,000

Located on the legendary Ha'ikaua Point in Kailua-Kona, this unparalleled oceanfront estate comprises one main home on the point, two additional oceanfront bungalows and another building with a large office, media room and 4-car garage. There is 600+ ft of private ocean frontage overlooking Keauhou Bay, He'eia Bay and the Pacific Ocean.

Protected by an offshore reef, the estate is the ideal vantage point for breathtaking Kona sunsets each evening and offers multiple access points to the bays and ocean. Ha'ikaua Point is an extraordinary Hawai'i estate on its own peninsula. Multiple acquisition options are available.

\$27,740,000



COLDWELL BANKER ISLAND PROPERTIES

75-5799 Alii Drive Unit A3, Kailua-Kona, HI 96740

Kurtis S. Becker
REALTOR RS-78042
Coldwell Banker Island Properties
Hawai'i Global Luxury Group
808.430.6785
kbbkonarealestate@gmail.com
www.hawaiiigloballuxury.com



\$22,500,000



4557 MAKENA RD.

Makena, Maui | 5,882 SQFT
3.137 AC | 5BR/4.5BA
MLS# 394579 | \$22,500,000

Classic Keahou at Makena estate property. Rare offering! Keahou consists of only 7 lots of 3 acres each. Privacy abounds in this gated ocean/sunset view property yet located in immediate proximity to 3 Championship golf courses and The Shops at Wailea, providing five-star dining and luxury shops. This sprawling estate maximizes views on a single-level footprint. Vaulted ceilings and a recently completed home theater addition provides for a self-contained casual yet luxurious lifestyle. Home is being sold fully furnished and is turnkey. Reside by the resort-style pool or stroll across the street to the white sand beach of Palauea Bay. Call for an appointment to fully integrate yourself with this amazing property.



David W. Richardson
(R)B 10780
Hawaii Life Real Estate Brokers
Direct 808.870.9916
www.MauiOceanfront.com
Dave@HawaiiLife.com
HL-1 Director | “Over \$1 Billion in Sales”



HAWAII LIFE

Forbes
GLOBAL PROPERTIES

\$17,500,000



4262 ANINI VISTA DR #A

Kilauea, Kauai | 11,159 SQFT | 1.24 AC
3BR/5.5BA | MLS# 652042 | \$17,500,000

Largest luxury home available on Kauai. Located in exclusive Anini Vista behind 2 gated entries. Panoramic ocean views from Hanalei to Kilauea Lighthouse. Saltwater pool overlooking Anini Beach, interior lap pool & gym adjacent to full recreation room. Stately office. Mother-in-law unit with full kitchen. Garage showroom accommodates up to 22 vehicles and can also be enjoyed as a recreation/party hall and/or sound studio, + additional 4 car garage. Outdoor kitchen adjacent to the pool, spa, and lagoon-style sandy beach. Large movie theatre with velvet reclining seats. Temperature controlled wine cellar. Designed for multigenerational living, staff quarters & entertaining. Adjacent 1.5 acre lot can be purchased for an additional \$5M.



Matt Beall
PRINCIPAL BROKER, RB-17738
Hawai'i Life Real Estate Brokers
808.346.7413
matt@hawaiiilife.com



Josh Jerman
REALTOR(B), RB-19728
Hawai'i Life Real Estate Brokers
808.283.2222
josh@hawaiiilife.com



\$17,000,000



4607 KAHALA AVENUE

Honolulu, Oahu | 58,205 SQFT Land
MLS# 202104095 | \$17,000,000

Kahala Beachfront estate lot with sandy beach. Build a luxury private compound on the spacious Avenue to beach lot or take advantage of the in place development opportunity with approvals and design to construct 6 luxury residences. This difficult to obtain and likely uniquely granted CPR-project in Kahala includes permits and design for 6 two story paired townhomes all on Hunakai Beach, one of Kahala’s gold sand beaches. The townhomes feature garages, lanais, private yards, and pools. Architects: Benjamin Woo. Interior Design: Philpotts Interiors of Honolulu. This is a unique opportunity in a neighborhood of estate homes.

**Images are architectural renderings.*



Erik Hinshaw
Real Estate Broker, RB-21068
Hawai'i Life Real Estate Brokers
Direct: 808.800.6278
Email: erik@hawaiiilife.com



HAWAI'I LIFE

Forbes
GLOBAL PROPERTIES

Matt Beall
PRINCIPAL BROKER, RB-17738
Hawai'i Life Real Estate Brokers
Direct: 808.346.7413
Email: matt@hawaiiilife.com



\$15,500,000



4851 LOWER HONOAPIILANI RD

Kahana, Maui | 5,294 SQFT
0.58 AC | 5BR/4.5BA
MLS# 393718 | \$15,500,000

Contemporary Polynesian-style direct oceanfront estate. Architecturally designed to maximize ocean views. Highest quality high-tech materials and finishes throughout. 10-foot pocket motorized doors, custom "Lutron Home Works" lighting, elevator, Euro-finish cabinets. Spectacular kitchen design with highest quality craftsmanship and appliances. Fabulous infinity pool, spa, and water features. Attached ohana features its own kitchen, living room, bedroom, walk-in closet and full bath, also with a private tiled lanai and ocean views. 3-car garage and custom water features at entry. Offered turnkey with some artwork, sculpture and personal exclusions. The adjacent property, located at 10 Hui Rd E, is also available for sale, which could create a family compound.



Nam L. Le Viet
R(S) 61810
GLOBAL LUXURY SPECIALIST
Coldwell Banker Island Properties
Direct: 808.283.9007
Email: nam@mauisold.com
Web: mauisold.com



COLDWELL BANKER
ISLAND PROPERTIES

Mary Anne Fitch
R(B) 15747
SENIOR PARTNER
Coldwell Banker Island Properties
Direct: 808.250.1583
Email: maryanne@soldmaui.com
Web: soldmaui.com



\$14,800,000



380 LAMA PLACE

Kailua, Oahu | 5,550 SQFT
13,240 SQFT Land
MLS# 202027954 | \$14,800,000

Once in a long while, a Hawai'i property with thoughtful design to match its exquisite environment comes to market, an ultra-premium, contributor-driven project for Oahu by Crema Builders. The contemporary elegance of 380 Lama Place is rivaled only by the home's stunning Lanikai setting. A private compound of creative, curated design elements and creature comforts on the island of Oahu, featuring a pool with jacuzzi, Covered Private Rooftop Bar, BT45 Kitchen, Climate Controlled Wine Cellar, Commercial Elevator, Tesla Powerwall with 24 pv panels. Premium finishes, stunning island views, urban amenities with int'l airport only minutes away. www.380lama.com

**Images are architectural renderings.*



Erik Hinshaw
Real Estate Broker, RB-21068
Hawai'i Life Real Estate Brokers
Direct: 808.800.6278
Email: erik@hawaiilife.com
www.hawaiilife.com/erikhinshaw



HAWAI'I LIFE

Forbes
GLOBAL PROPERTIES

\$14,250,000



11 HALE MALIA PLACE

Kahana, Maui | 4,354 SQFT
0.29 AC | 5BR/3.5BA
MLS# 393522 | \$14,250,000

A magnificent estate of unparalleled beauty situated in an unsurpassed location just minutes north of Kaanapali Resort and just south of Kapalua Resort. "Hale Malia" is West Maui's most secluded gated oceanfront community offering true Hawaiian ambiance. One of only six exquisite oceanfront sites set in a bed of lava rock just above Keoni Nui Bay. Completed late 2000, the focal point of this superbly designed residence is a stunning great room with pocket doors opening to an expansive covered lanai with pool and spa. The home faces west offering striking ocean, year-round sunset and views of both Lanai and Molokai Islands. Offered furnished with exclusions.



Nam L. Le Viet
R(S) 61810
GLOBAL LUXURY SPECIALIST
Coldwell Banker Island Properties
Direct: 808.283.9007
Email: nam@mauisold.com
Web: mauisold.com



COLDWELL BANKER
ISLAND PROPERTIES

Mary Anne Fitch

R(B) 15747
SENIOR PARTNER
Coldwell Banker Island Properties
Direct: 808.250.1583
Email: maryanne@soldmaui.com
Web: soldmaui.com



\$12,800,000



588 KULAIWI DR

Wailuku, Maui | 8,032 SQFT | 5.75 AC
5BR/5.5BA | MLS# 393218 | \$12,800,000

Gated award-winning estate set on a mountain top for ultimate privacy and security with sweeping views of the central isthmus and the north and south shorelines. This vantage point is unmatched by any other on Maui. Open spaces allow trade winds to circulate for a natural, healthy open-air environment, and the use of clerestory windows brings outside light into the home. The property embodies the aloha spirit of island lifestyle with maximum privacy. It offers a unique combination of proximity to the airport, hospital and shopping while preserving seclusion. Lona Ridge is a coveted location for spectacular celebrations, TV sets, and corporate events.



Josh Jerman
REALTOR(B), RB-19728
Hawai'i Life Real Estate Brokers
808.283.2222
josh@hawaiilife.com



HAWAI'I LIFE





\$12,300,000



301 PLANTATION ESTATES DRIVE

Kapalua, Maui | 7,127 SQFT
2.06 AC | 4BR/4.5BA
MLS# 394362 | \$12,300,000

This stunning single-level residence is located in the majestic Plantation Estates of Kapalua, a prime gated community of 2+-acre estate sites. Sitting adjacent to the third hole of the world renowned Plantation Golf Course, home to the PGA's first tournament each year, the estate offers magnificent ocean and golf course views in a lush setting of mature landscaping. Designed by Jeffrey Long, Long & Associates Architects and Interiors, the residence was built with the highest level of craftsmanship. Seamlessly incorporating indoor and outdoor living spaces, this gracious estate is built on a grand scale. Offered Turnkey.



Nam L. Le Viet
R(S) 61810
GLOBAL LUXURY SPECIALIST
Coldwell Banker Island Properties
Direct: 808.283.9007
Email: nam@mauisold.com
Web: mauisold.com



COLDWELL BANKER
ISLAND PROPERTIES

Mary Anne Fitch

R(B) 15747
SENIOR PARTNER
Coldwell Banker Island Properties
Direct: 808.250.1583
Email: maryanne@soldmaui.com
Web: soldmaui.com





You dream the dreams, we'll get you home.

A TRADITION OF EXCELLENCE. IMPECCABLE SERVICE.
PEERLESS EXPERTISE. REAL SUPPORT.

IT'S SIMPLY IN OUR NATURE.

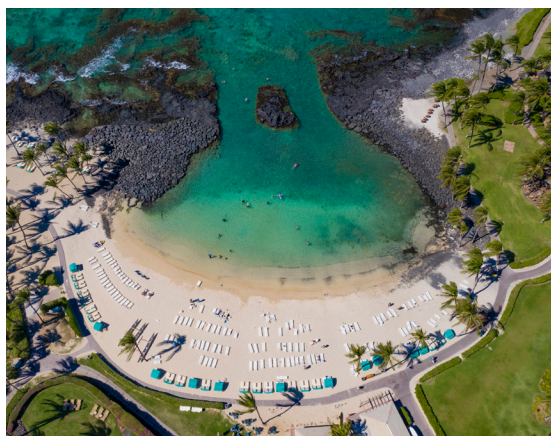
corcoran

PACIFIC PROPERTIES

KAUAI | OAHU | MAUI | HAWAII ISLAND | [CORCORANPACIFIC.COM](https://www.corcoranpacific.com)

©2022 Corcoran Group LLC. All rights reserved. Corcoran® and the Corcoran Logo are registered service marks owned by Corcoran Group LLC. Corcoran Group LLC fully supports the principles of the Fair Housing Act and the Equal Opportunity Act. Each Office is independently owned and operated.

SOLD



BEAUTIFUL HALE LIO KAI

Kamuela, Big Island | 4,896 SQFT
33,005 SQFT Land | 5BR/5.5BA
MLS# 659482 | \$10,900,000

- Large infinity pool and spa.
- Expansive great room.
- A two-car garage plus golf cart parking.
- Beautiful mature tropical landscaping.
- Turnkey furnished.
- Photovoltaic System.
- Custom cabinetry, mahogany trim and doors, vaulted ceilings, stone floors, and granite counters.
- Outdoor Sunken Wet Bar, TV, and several dining, lounging, and seating areas perfect for entertaining.
- Pod style living on separate AC zones.
- Built in 2014
- Video link: <https://player.vimeo.com/video/702480209>

corcoran
PACIFIC PROPERTIES

live who you are



Deborah L Thompson

R(S)-81063

Corcoran Pacific Properties

808.938.6631

deborah.thompson@corcoranpacific.com

www.debthompsonhawaii.com





WATER FALLING ESTATE

Ninole, Big Island | 10,942 SQFT | 9.44 AC | 5BR/4Full/3Half BA | MLS# 658607 | \$9,950,000

Highly successful short-term (HOSTED) vacation rental property. This magnificent oceanfront estate incorporates all of the natural beauty and amenities found at luxury resorts around the globe. Situated on more than nine acres in Ninole on Hawaii's Big Island, the stunningly beautiful northeast coast, Water Falling Estate sits on a promontory overlooking the Pacific Ocean. Its natural twin waterfalls cascade into the ocean. Privately gated, this beautifully built home is a four-story designed residence with a large open floor plan. Quality and elegance is evident in every detail. The many

highlights include a rooftop deck and a central Daytona 52-inch round pneumatic air compression elevator providing easy access to all levels. Amenities include a lighted tennis/basketball court with stadium-style seating for 450 spectators, 9-tees of golf and an aquatic center with a 25-meter Olympic sized swimming pool with three lanes and starting blocks, a 16-foot deep diving pool with elevated 7-meter platform and a 3-meter Duraflex Olympic springboard, spa, a 25-meter children's pool, changing room with shower plus a wet bar, exterior grill and dining area.



\$9,950,000



HAWAII LIFE

Forbes
GLOBAL PROPERTIES

Carrie Nicholson
REALTOR, BIC, HAWAII LIFE ONE, DIRECTOR
Hawaii Life - Forbes Global Properties
Direct: 808.896.9749 | Carrie@HawaiiLife.com
IG: [@carrierealestate](#) | [Carrie-Nicholson.com](#)



LuxuryHomeMagazine.com

\$9,950,000



HANAPEPE LOOP

Koko Kai, Oahu | 7,851 SQFT
18,150 SQFT Land | 6BR/6.5BA
MLS# 202126398 | \$9,950,000

Beautifully finished oceanfront estate with 2-story-high glass slider off large living room that opens to private, wrap-around pool, hand-crafted lanai & large flat lawn. Unobstructed panoramic views of the ocean and Diamond Head. Located in the desirable and picturesque Koko Kai Neighborhood (a recent *Hawaii Five-0* television filming location), this exclusive waterfront retreat has a wonderful indoor-outdoor feel—perfect for intimate getaways or resort-like Hawaii living with family and friends. Direct access to water for swimmers, surfers, kayakers and SUP enthusiasts. Watch whales, sea turtles and other marine activity from the seaside cabana and luxurious spa off the master suite terrace.



Beth Chang
REALTOR®, RB-14022
Luxury Property Specialist, VP
808.478.7800
Beth@BethChang.com
www.BethChang.com





6699 MAKENA RD.

Makena, Maui | 4,080 SQFT
0.71 AC | 5BR/4.5BA
MLS# 395148 | \$8,995,000

Makena is the consummate south Maui location: nature-focused, tranquil, and rural yet minutes from Wailea. A gated entry, steps from a white sand beach, leads to the secluded luxury of this single-level custom home. Classic Island Plantation-style, architect-designed with the perfect balance of entertaining, private, and indoor/outdoor living spaces. A central great room connects 3 separate wings. Walls of windows enfold the great room and bedrooms connecting you to gardens and fruit trees. A resort-style pool with hot tub, slide, waterfall, plus covered lanai complete the lush tropical setting. Championship golf courses, five-star dining, and The Shops at Wailea are nearby. Let the peaceful surf of Oneloa (Big Beach) lull you to sleep. This is truly how to live the Maui life.



HAWAII LIFE

Forbes
GLOBAL PROPERTIES

David W. Richardson

(R)B 10780

Hawaii Life Real Estate Brokers

Direct 808.870.9916

www.MauiOceanfront.com

Dave@HawaiiLife.com

HL-1 Director | "Over \$1 Billion in Sales"



SOMETHING
PROFOUNDLY ELSE



Timbers Kaua'i at Hokuala is unlike anything on Kaua'i. An intimate enclave of residences all offering oceanfront views like no other on the island. Enjoy spectacular views, world-class amenities, farm-to-table dining and your own award-winning Jack Nicklaus Signature golf course. With both wholly-owned and fractional ownership opportunities available, Timbers Kaua'i takes care of you – not the other way around, so you can focus on building memories that matter the most. Now selling Phase II.

Prices starting at \$445,000

timberskauai.com/hana | 808.647.2869



TIMBERS KAUA'I
Ocean Club & Residences

ⓘ This advertisement does not constitute an offer to sell nor the solicitation of an offer to purchase made in any jurisdiction nor made to residents of any jurisdiction, including New York, where registration is required. Tower Kauai Lagoons LLC uses the Timbers Resort®, Timbers Collection® and certain other Timbers brand names under a limited non-transferable license in connection with the sales and marketing of the Hokuala Kauai™ - A Timbers Resort® (the "Project"). If this license is terminated or expires without renewal, the Project will no longer be identified with nor have any right to use the Timbers® marks and names. All renderings depicted in this advertisement are illustrative only and may be changed at any time. All rights reserved.

\$8,500,000



LOT 35 AT KOHANAIKI

Kohanaiki, Big Island | 1.28 AC
MLS# 655011 | \$8,500,000

Overlooking the 14th and 15th holes at the Kohanaiki Golf Club, Lot 35 offers stunning golf course and ocean views. The residential community and Kohanaiki Club are built around luxury, sustainability and world-class amenities. The Kohanaiki Club is a private equity club and membership is by invitation only to Kohanaiki Property Owners.

METZLER
REALTY



Joni J. Metzler
(R) B
Metzler Realty
808.640.6832
Joni@MetzlerRealty.com
www.MetzlerRealty.com





69-1027 NAUPAKA KAI PLACE

Waikoloa Resort, Big Island | 5,121 SQFT | 36,419 SQFT Land | 8BR/6.5BA | MLS# 658831 | \$8,250,000

Located in an Oceanfront Community along the resort coast on the Big Island of Hawaii is this stunning luxury residence. Currently a STVR vacation rental home with permits, makes for a great investment! Highlighted by beautiful custom designed quality of finishes & features and in a prime location in Waikoloa Resort. This residence offers an array of features with a lap pool & elevated spa, game room with a pool table and shuffleboard, BBQ and fire pits area, wet bar area with

spacious indoor & outdoor kitchens plus a great room. Each room is gorgeously furnished and reflects quality interior design. The home has spectacular panoramic views of the ocean, surf, beach, mountain, sunsets, and overlooks the protected Anchialine ponds. Located within walking distance to the King's and Queen's Market Place, shops & restaurants, Anaeho'omalulu bay with white sandy beach and snorkeling, and Waikoloa golf course nearby.

\$8,250,000



HAWAII LIFE



Carrie Nicholson
REALTOR, BIC, HAWAII LIFE ONE, DIRECTOR
Hawaii Life - Forbes Global Properties
Direct: 808.896.9749 | Carrie@HawaiiLife.com
IG: [@carrierealestate](https://www.instagram.com/carrierealestate) | [Carrie-Nicholson.com](https://www.Carrie-Nicholson.com)



LuxuryHomeMagazine.com





Experience Hokuli'a, the Kona Coast's most spacious and private residential club community designed for active, health-conscious adventurers and avid golfers. At Hokuli'a, you'll enjoy unsurpassed resort amenities at the exclusive Club at Hokuli'a, a world-class Jack Nicklaus Signature golf course, and plenty of space to gather, celebrate or simply unwind.

Hokuli'a homeowners enjoy 1,260 uncrowded acres to roam free and relax. A peaceful shoreline park features on-site hiking trails, picnic areas, a canoe landing, and ocean activities at Nawawa Bay.

HOKULI'A

Contact Hawai'i Life - Hokuli'a Sales

81-6636 Pu'u Ohau Pl., Kealahou, HI 96750 | (808) 731-4354 | Hokulia@HawaiiLife.com

Hokulia.com



450 HULOPOE DRIVE

Manele Bay, Lana'i | 4,951 SQFT | 1.2 AC | 4BR/4.5BA | MLS# 395288 | \$7,900,000

This alluring Estate is perched just above Hulopoe Bay and Sweetheart Rock, Puu Pehe, and borders the Jack Nicklaus designed Challenge Golf Course. A safe and sustainable sanctuary that feels a world away but is still in the United States on the island of Lana'i. With commanding views of Hulopoe Bay, this serene 1.2-acre gated estate with luxury carbon neutral home, mature landscaping and automated pool system is the ultimate retreat. The private residence welcomes you with dramatic views of Maui and Kahoolawe

from a great room with 2 disappearing glass walls enveloping you in the best of indoor-outdoor living. Upstairs a master suite with private deck, walk-in closet with laundry, and large bath are the epitome of the tropical luxury. With quality materials throughout and a site plan that provides privacy with a dramatic view, this estate is the destination for a quiet respite or a gathering place for a large celebration.

\$7,900,000



Nam L. Le Viet
R(S) 61810
GLOBAL LUXURY SPECIALIST
Coldwell Banker Island Properties
Direct: 808.283.9007
Email: nam@mauisold.com
Web: mauisold.com



COLDWELL BANKER
ISLAND PROPERTIES

Mary Anne Fitch

R(B) 15747
SENIOR PARTNER
Coldwell Banker Island Properties
Direct: 808.250.1583
Email: maryanne@soldmaui.com
Web: soldmaui.com



LuxuryHomeMagazine.com

SOLD ON MAUI



MAUI, IT'S A LIFESTYLE!

Wailea, Maui | 4,331 SQFT
22,172 SQFT Land | 3BR/4BA
MLS# 394459 | \$6,500,000

Simple Elegance with an Ocean View! Custom built in 2020, offers the best in single level living w/master suites on each level. Both masters have indoor/outdoor showers w/ocean view or garden setting. Modern & elegant, this open & spacious design is perfect for entertaining & family gatherings. Sapele wood slider doors span 25' & disappear seamlessly into the large covered outdoor living area. Thoughtfully designed to take full advantage of Maui's island lifestyle, featuring 3-bedroom ensuites, media room & full bath, upstairs family room/office, Miele gas cooktop, Butler's Kitchen & refreshing pool and jacuzzi. It's time to make Maui a part of your lifestyle! Video: www.Vimeo.com/soldOnMaui



Diane K. Pool
R(B)-17896, ABR, CRS
808.276.2004
diane@SoldOnMaui.net
www.SoldOnMaui.net



HAWAI'I LIFE

Forbes
GLOBAL PROPERTIES



\$6,200,000



OCEAN RESIDENCE #3300 PARK LANE ALA MOANA

Honolulu, Oahu | 1,982 SQFT
491 SQFT Lanai | 2BR/2BA
MLS# 202205133 | \$6,200,000

Welcome to unit #3300 in the highly desired Building 3 of Park Lane, a stunning 2-Bedroom + Den unit with an expansive 491s/f Lanai! Enjoy lush green park views from the front row of Park Lane with the Pacific Ocean just beyond. This unit offers a seamless flow from kitchen to dining and living areas and out to the lanai, complete with private hot tub. Luxurious features include Studio Becker cabinets, Toto Washlets, Sub-Zero refrigerator, Wolf appliances, 10-ft ceilings and much more! This unique opportunity offers the best of both worlds—the benefits of a single-family home with expansive indoor-outdoor living, paired with the services, amenities, security and ease of ownership of a luxury condominium development—all connected to Ala Moana Shopping Center.



HAWAI'I LIFE

Forbes
GLOBAL PROPERTIES

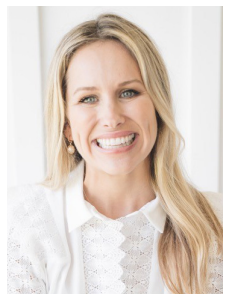
Noel Pietsch Shaw

MBA, Realtor-Associate, RS-75888

808.221.8889

noelshaw@hawaiilife.com

www.NoelShaw.com





4.5 ACRE SEASHORE ESTATE - PRICE REDUCED

Wailuku, Maui | 2,640 SQFT | 4.5 AC | 3BR/4BA | MLS# 393612 | \$5,900,000

These choice grounds hold two tastefully placed homes built-in 2020. Discreet, private, and completely unassuming, this plantation-style haven, exudes all the attributes of oceanside serenity, from the sounds of our local seabirds to those migrating on the gentle trade winds, to the sounds of the surf meeting the shoreline, it's the complete

dream setting. The true uniqueness is in the style of the exterior of the homes, all in combination with the highest quality materials that are made for long-standing stability and luxury oceanside living.



\$5,900,000



COLDWELL BANKER | **ISLAND PROPERTIES**



Rhonda Smith-Sanchez

RB-22953

Maui's North Shore Specialist

808.205.2175

Rhonda@RhondaMaui.com

Rhondamaui.com



LuxuryHomeMagazine.com



MODERN LANAI RETREAT WITH OCEANSIDE SERENITY

SEE PAGES 38 & 39



LIVE

L U X U R Y

MAUI'S NORTH SHORE



RSS

RHONDA SMITH SANCHEZ

RHONDA
Smith-Sanchez
REALTOR® (B) | RB-22953
PH: 808-205-2175
RHONDAMAUIHI@GMAIL.COM



\$5,735,000



BEAUTY AND RARITY

Hamakua Coast, Big Island
4,527 SQFT | 105.61 AC
4BR/4BA | MLS# 656673
\$5,735,000

Villa Paolina is Italian architectural artistry at its finest and is sited on 105.61 acres of verdant Hamakua Coastline on the Big Island of Hawaii. This is a monumental feat of construction and a home of rare and great beauty. 4,527 square feet of living area consisting of 4 suites, a hotel-sized kitchen with a butler’s pantry and 2,240 square feet of covered lanai of marble for a total of 6,764 square feet under roof. 180-degree coastline views, majestic Mauna Kea and across the channel to Maui and the tip of Haleakala.



Rebecca Hirsch-Keliioomalu
RB-19834
President and Founder of The Rebecca K. Collection
Hawaii Business Top 100 Hall of Fame
808.895.1156
rebeccak@compass.com
compass.com







UNPARALLELED REPRESENTATION. THE FINEST HAWAII PROPERTIES.



The Start of a New Legacy. I've Made a Momentous Move to Compass.

After nearly 20 years guiding my clients through buying, selling, and investing in real estate on the Big Island, my team and I have made a decisive move to partner with the nation's leading brokerage: Compass!

Powered by innovative technology and tools, we are elevating real estate to new heights in Hawaii. 2021 was an incredible year for us, closing over \$80M in volume, and we're so excited for all that's to come from this new venture.

I am especially grateful for all my clients who continue to trust me to represent them through one of their most impactful life decisions.



Rebecca Hirsch-Keliioomalu

RB-19834

President and Founder of The Rebecca K. Collection

CLHMS, Hawaii Business Top 100 Hall of Fame

808.895.1156

rebeccak@compass.com



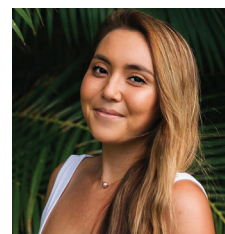
Stephanie Sites

RS-71086

Sales Coordinator and
Founding Member of The
Rebecca K. Collection

808.989.8052

stephanie.sites@compass.com



Julia Lee

RS-84567

Real Estate Sales Associate,
The Rebecca K. Collection

808.987.4326

julia.lee@compass.com



HALE WAILELE, 78-7102 WALUA ROAD

Kailua-Kona, Big Island | 5,441 SQFT | 5.016 AC | 5BR/6Full/3Half BA | MLS# 661157 | \$5,700,000

Hale Wailele, known as the “House of Falling Water”, is an experience of island elegance. Overlooking Keauhou Bay and the Kona coast, this Lucky Bennet designed masterpiece enchants with koi ponds and streaming waterfalls as you enter your retreat. The breathtaking indoor living space includes over 2000 sqft of honed Beaumaniere French Limestone, 18-foot vaulted ceilings, exquisite custom kitchen, and dining room where natural light abounds. Three pavilions make up the main residence, each featuring four luxuriously appointed king suites and accompanying six

and a half baths. Each bedroom is graced with a private, personalized lanai area. The beauty of Hawai’i artistry is embraced in every detail of the architecture, including the extensive local hardwoods throughout, resort-style furnishings, expansive ocean-embracing lanais, and salt water infinity pool and spa. Perched above a grove of mature and producing fruit trees is the second residence, a boutique one bedroom guest cottage with spectacular ocean views. The jewel of Kona has to be experienced in person to appreciate the magnificence of this offering. Hale Wailele awaits!

\$5,700,000



COLDWELL BANKER
ISLAND PROPERTIES

M
MARCO IN KONA

Marco A. Silva

REALTOR®, Broker, RB-20599

808.557.8921 | Marco@KonaLuxuryRealEstate.com

KonaLuxuryRealEstate.com

Certified Luxury Home Marketing Specialist®

Certified Residential Specialist | Certified Negotiation Expert

2019 Top PERFORMER® Hawaii Business Magazine

2017 Top 100 REALTOR® Hawaii Business Magazine

2016 Top 100 REALTOR® Hawaii Business Magazine



LuxuryHomeMagazine.com

\$5,500,000



ISLAND PARADISE AWAITS

Laie, Oahu | 2,526 SQFT | 0.275 AC
4BR/3.5BA | MLS# 202202781 | \$5,500,000

Quintessential Hawaiian Lifestyle: amazing white sand beach, turquoise ocean, resort style custom home. Designed to inspire relaxed island living right on the beach. This almost new contemporary home boasts high ceilings with walls of windows to soak in the natural light, framing the breathtaking views and your own private pool on the property. Imagine the feel of warm silky sand between your toes as you stroll along the hidden shore, where a natural reef has created a deep water cove and pristine sandy beach. Come home to your own tropical paradise on the island of Oahu. Call today for a private showing of this truly one of a kind property.



Jeanne Frace
Realtor | RB-20579
Redfin
808.388.0826
jeanne.frace@redfin.com





\$3,999,999



78-7027 OLA MAU ST.

Kailua Kona, Big Island
4,274 SQFT | 0.41 AC | 4BR/5BA
MLS# 658754 | \$3,999,999

This gorgeous custom-built home is located in the highly desirable gated community of Bayview Estates. The 4 bedroom, 4.5 bath home was built with green building construction features and true energy efficiency. Overlooking Keauhou Bay, the views of the ocean, coastline and sunsets are outstanding. The home feels very private and is on a cul-de-sac at the edge of the subdivision. One side of the home is adjacent to the Historic Keauhou Holua slide / with lots of open space. Over 4600 sq. ft. of living space, with 6800 sq. ft. under roof, this quality home is the epitome of luxury living. VIDEO LINK: <https://vimeo.com/683649773/2e86fb3d2b>



DISTINCTIVE
COLLECTION

by
Better Homes
and Gardens
REAL ESTATE®

ISLAND LIFESTYLE

Ma'ata Tukuafu

RS-81498

Better Homes and Gardens Real Estate Island Lifestyle

808.895.7896

Ma'ata@BetterIslandLifestyle.com

For photos and info - Text 1077236 To: 35620



LUXURY HOME[®]
M A G A Z I N E

HAWAI'I

Where aloha is home.



ARQUITECTURA

unique sites...



...inspire innovative designs

Arquitectura is a Maui-based firm that offers complete Architectural and Planning services throughout the islands of Hawaii.

Created by Founder and President, Marc Taron, AIA, Arquitectura's award-winning designs are a culmination of a unique approach to the Design Process that focuses on the irresistible views, strong indoor/outdoor relationships and the diversity of cultures found only here in Hawaii.

Photography by PanaViz, 808.497.2345

Arquitectura, LLC

Marc Taron, AIA
1325 Mo'ohale Street
Waikapu, HI 96793
808.870.1053
arq@hawaii.rr.com
www.arqhawaii.net





785 WEST KUIAHA RD

Haiku, Maui | 5,350 SQFT | 2 AC | 5BR/3.5BA | \$3,995,000

Rare is the residence on Maui that boasts impeccable architectural design, enough privacy, and a parade of trade winds that touch all the beauty of the Hawaiian-style floral and landscaping resting on 2 acres. Rarer still, a residence that provides floor-to-ceiling views of the ocean and materials all perfectly in sync with Maui's

north shore surroundings. If a little farming is in your blood, you'll love the land, if gardening runs in your DNA the gardens will provide. The line where luxury begins and nature ends is very fine indeed. Complete with net-metered Photo Voltaic system, county water, and hi-speed internet. Live luxury, live the dream on Maui's north shore.



\$3,995,000



COLDWELL BANKER | **ISLAND PROPERTIES**

Rhonda Smith-Sanchez

RB-22953

Maui's North Shore Specialist

808.205.2175

Rhonda@RhondaMaui.com

Rhondamaui.com



LuxuryHomeMagazine.com



"The Ginkgo Ocean"
Visit one of our showrooms
or website for Hawaii's best
selection of Fine Oriental
Carpets and Hawaiian Rugs



SERVICING ALL ISLANDS

IndichCollection.com

Honolulu - Nimitz Hwy

Na Lama Kukui
(formerly the Gentry Pacific Design Center)
560 N. Nimitz Hwy #101, Honolulu, HI 96817
808.524.7769
Monday-Saturday: 9:30-5:30

Honolulu - Ward Ave

550 Ward Ave.
Honolulu, HI 96814
808.596.7333
Monday-Saturday:
9:30-5:30, Sunday: 10-4

Maui

259 East Wakea Ave.
Kahului, HI 96732
808.877.7200
Monday-Friday: 9:30-5

Kona

Kaloko Business Center V
73-5617 Maiau St.
Kailua-Kona, HI 96740
808.329.6500
Monday-Sunday: 10-6



\$3,695,000



11 HUI KELU WAY KIHEI, MAUI

Kihei, Maui | 5,000 SQFT
12,628 SQFT Land | 5BR/5BA
MLS# 395518 | \$3,695,000

How often does one find a true 'Family Designer' Home within two blocks of a world-class Maui Beach? This Kihei residence lives large! Entering through the custom beveled glass entry doors, you arrive in the elegant two-story round foyer. The warmth of the natural hardwood Brazilian Cherry floor sets the tone. A semi-spiral grand stairway beckons you to the upper level light-filled great room & master suite area. Retractable glass sliders afford access to the wrap around ocean & outer island view lanai. There is an entertainment area with theater seating, a family/den room, & a full-size dedicated gym. Most of the bedrooms enjoy direct access to an outside seating area.

www.SouthMaui.info



Kenneth M. 'Ken' Hayo

Principal Broker-Owner | RB-15529
Maui Real Estate Advisors, LLC
Direct: 808.283.8435
Ken@MauiRealEstateAdvisors.com



Maui's Only Realtor Recognized as a 'Top 100 State of Hawaii Realtor' Among 15,000 + Hawaii Realtors (for 14 Consecutive Years),
Top 100 Hawaii Realtors Hall of Fame, Hawaii Business Journal 2006-2021

Robert H. 'Robbie' Dein

Broker-Owner, ABR, CRS, RSPS | RB-18398
Maui Real Estate Advisors, LLC
Direct: 808.250.3564
Robbie@MauiRealEstateAdvisors.com





\$3,500,000

HOKULIA PHASE 1,
RESIDENCE 8-A

Kealakekua, Big Island | 2,682 SQFT
1.32 AC | 3BR/3BA
MLS# 654798 | \$3,500,000

81-6678 Hualani Place, Kealakekua, HI 96750 - Located within Hokulia, a private residential club community on Hawaii's Big Island. This exceptional 3 bedroom, 3 bath, 2682 sq. ft. luxury plantation style residence boasts panoramic 180 degree unobstructed ocean views. Enjoy dramatic ocean and shoreline views from the great room, master suite, guest suite and detached guest ohana suite. The great room and kitchen feature vaulted ceilings that opens up to 1250 sq. ft of covered lanai space maximizing Hawaii's best, tropical, indoor-outdoor living. The gourmet kitchen is perfect for entertaining and gathering around the oversized island. A spa-like-retreat master bath invites you to relax after a day of your favorite activities in paradise.



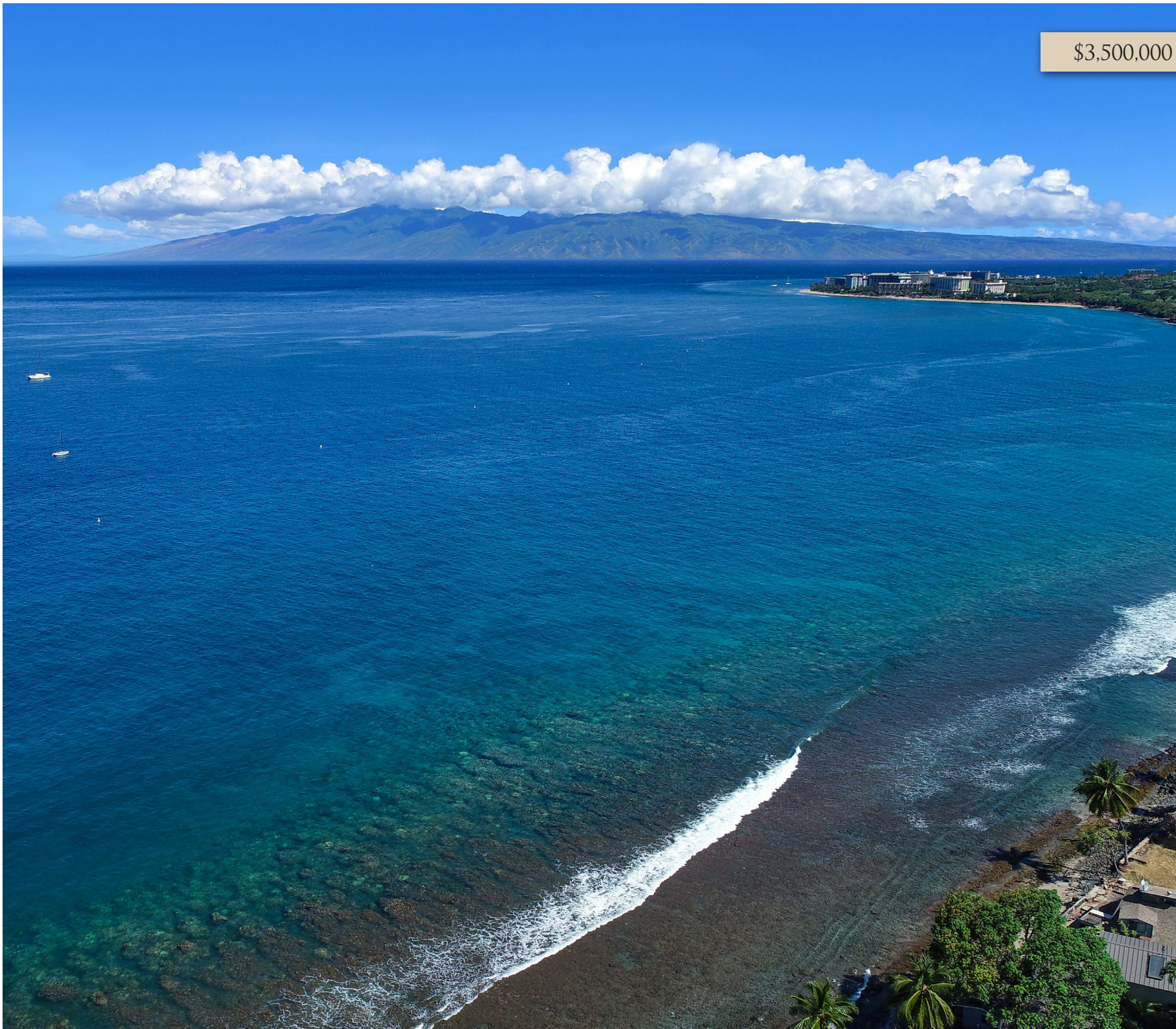
Leslie Oxley-Friedrich
REALTOR (S)
Hawaii Life - Forbes Global Properties
Direct: 808.937.0649
LeslieOxleyFriedrich@HawaiiLife.com
IG: @leslieoxleyfriedrich



Carrie Nicholson
REALTOR, BIC
HAWAII LIFE ONE, DIRECTOR
Hawaii Life - Forbes Global Properties
Direct: 808.896.9749
Carrie@HawaiiLife.com
IG: @carrierealestate
Carrie-Nicholson.com



\$3,500,000



1441 FRONT STREET

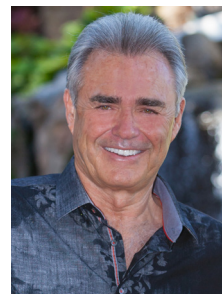
Lahaina, Maui | 1,988 SQFT
6,705+ SQFT Land | 3BR/3BA
MLS# 394279 | \$3,500,000

Stunning oceanfront property in Lahaina. Relax and enjoy panoramic island views.
This property is in an ideal location, close to restaurants and activities.
www.MauiHomeSales.com/1441FrontSt



For all the Maui listings check out my website:
www.MauiHomeSales.com
Including Interactive Maps of Kaanapali, Kapalua and Wailea

Robert R. Myers
REALTOR (S), SRS
Tel: 808.283.3067
Robert@MauiHomeSales.com
www.MauiHomeSales.com



\$3,095,000



MID-CENTURY
MODERN GEM IN
MAKIKI HEIGHTS

Honolulu, Oahu | 3,084 SQFT
9,717 SQFT Land | 4BR/3.5BA
MLS# 202206524 | \$3,095,000

Designed by architect Frank Haines, this unique & stylish home features characteristics of a classic Mid-Century home—custom built-ins, clever storage, large glass windows & seamless integration w/ nature while offering the luxuries found in a Modern Home—an updated kitchen including African Mahogany & Black Woven Glass Tile, remodeled bathrooms, Owned PV panels, & a Mr. Steam bathroom shower! This home is in one of the most convenient locations in Honolulu w/ stunning city, ocean views & breathtaking sunsets. The backyard is an entertainer's delight w/ lush landscaping, saltwater tension edge pool w/ a waterfall & poolside gas fire pit.



Noel Pietsch Shaw
MBA, Realtor-Associate, RS-75888
808.221.8889
noelshaw@hawaiilife.com
www.NoelShaw.com



HAWAI'I LIFE

Forbes
GLOBAL PROPERTIES



\$2,999,000



65-1142-B HOKUULA RD

Kamuela, Big Island | 2,640 SQFT
43,560 SQFT Land | 5BR/4BA
MLS# 659647 | \$2,999,000

This sensational home is sited on an exceptional one-acre lot, with privacy and unobstructed views, making this a rare opportunity in a coveted neighborhood within beautiful Waimea. Walk to town or school with the kids, this home is in the best part of town. Mature landscaping includes jacaranda, park-style magnolia trees, macadamia nut tree, mango, guava, avocado, and papaya trees. The perimeter of the property is lined with old growth paper bark eucalyptus trees along with birds of paradise. Best of all perhaps is the beautiful ohia trees with red and orange lehua. Fully fenced and gated for additional privacy this is a rare find. Truly a must see!



corcoran
PACIFIC PROPERTIES

Stephen Dowling
R(S), RS-81683
808.640.6586
stephen.dowling@corcoranpacific.com
corcoranpacific.com



\$2,895,000



UPCOUNTRY
ELEGANCE IN KULA

Kula, Maui | 3,292 SQFT
0.5 AC | 3BR/3.5BA
MLS# 395523 | \$2,895,000

BI-COASTAL OCEAN & MTN
VIEWS! Gated entry leads to your
oasis. Double doors open to your 20ft
tall foyer; a perfect space for your art
collection. Custom curved wrought
iron railed staircase & sculpted tray
ceilings denote architectural refinement.
Spacious lanai w/ salt water pool &
spa. Chef-inspired kitchen w/ high-
end appliances (Dacor, Sub-Zero), 6
Gas Burner Dacor Range w/ copper
trim, 2 Convection Ovens, Walk-in
Pantry, built-in Sweep Vacuum &
more. Living/dining area opens to lanai
thru Fleetwood Glass doors. Primary
bedroom w/ en-suite spa-like bath &
private ocean & mountain view balcony.
Adorned by Exotic Brazilian mahogany,
Travertine, Italian imported Velvet
Ciniega, Black Granite Zen, Quartzite.



Jeannie Kong-Evarts
RS-68054
Maui Real Estate Advisors LLC
JeannieKongEvarts@gmail.com
808.276.1832



\$2,600,000



LOT 21, PHASE II AT KOHANAIKI

Kohanaiki, Big Island | 11,325 SQFT Land
MLS# 661534 | \$2,600,000

Lot 21, Phase II fronting the practice range of the Kohanaiki Golf Club offers spectacular golf course views. Kohanaiki, situated on roughly 450 acres & over 1.5 miles of beach, fronts productive sport fishing grounds (ono lane) and the Big Island's finest surfing beach. Kohanaiki is remarkably different from its predecessors & the first new development of its type on the Big Island in nearly a decade. The residential community & Kohanaiki Club are built around luxury, sustainability and world-class amenities. The Rees Jones-designed golf course features 6 oceanfront holes & more than 1 mile of stunning coastline. The Kohanaiki Club is a private equity club and membership is by invitation only to Kohanaiki Property Owners.

METZLER
REALTY



Joni J. Metzler

(R) B

Metzler Realty

808.640.6832

Joni@MetzlerRealty.com

www.MetzlerRealty.com



AN AIR OF LUXURY

Thoughtful Interiors With Award-Winning Design



ventus

www.ventus.design

808.358.9135

rlewis@ventus.design

For designer Reiko Lewis, interior design is all about creating a sophisticated and timeless space that allows people to share in elevated comfort, assurance and luxurious peace of mind.

From elegant and airy home interiors to luxuriously modern commercial spaces, Ventus Design is the little *wind* to help push you through all of life's difficulties.

\$2,600,000



PUU LANI RANCH WITH PANORAMIC VIEWS

Kailua-Kona, Big Island | 3,368 SQFT | 1.5 AC
4BR/4.5BA | MLS# 660945 | \$2,600,000

71-1693 Puu Napoo Road is a beautiful 1.5-acre estate located in prestigious Puu Lani Ranch north of Kailua-Kona. This custom-built 4-bdrm, 4.5-bath home offers panoramic ocean, mountain and Kona sunset views and was architecturally designed to showcase the amazing scenery surrounding the home. The outstanding amenities at Puu Lani Ranch include an Equestrian Center, Tennis Courts, Basketball Court, Fitness Center and Clubhouse. Makani Golf Club and scenic hiking trails of Puu Waa Waa are close by and it's an easy drive to the beaches in Kona and Kohala. Quality craftsmanship and luxury finishes are found throughout the home.



COLDWELL BANKER
ISLAND PROPERTIES

75-5799 Alii Drive Unit A3, Kailua-Kona, HI 96740

Hawai'i Global Luxury Group

Kurtis S. Becker | 808.430.6785
Brandy Shibuya | 808.936.4540
Carl N. Hulen | 808.333.6778
kbkonarealestate@gmail.com
www.hawaiiigloballuxury.com



JUST SOLD



JUST SOLD

Big Island | \$2,500,000

“Selling our home was easy with Donna Duryea, a professional agent that we would recommend. Her husband’s drone and photos were top-notch.” - L & F (Seller)

“This was a relatively complex transaction involving multiple parcels and a rental agreement. Donna navigated thru the complexities with ease and handled both the Buyer and Seller with aplomb. Donna blends the Aloha spirit with her extensive practical experience to deliver fantastically for her clients. Highly recommended!Thanks” - Ken (Buyer)



Donna Duryea
R(S) 62459, CRS, GRI, ABR
808.987.4511
donna@theduryeateam.com
www.theduryeateam.com



COMPASS



\$2,500,000



ONE ALA MOANA #1505

Honolulu, Oahu | 1,280 SQFT
2BR/2BA | MLS# 202207053
\$2,500,000

Presenting ONE Ala Moana #1505, a resort-style luxury residence in Honolulu. Enjoy Pacific Ocean & Ala Moana Beach Park views from the main living area & both bedrooms. Fine finishes include a designer Studio Becker kitchen, Wolf & Miele appliances, walk-in laundry room, upgraded lighting, & wide plank hardwood flooring. A spacious primary bedroom suite stuns with ocean views. Ensuite bath with separate deep soaking tub & walk-in shower, double vanity, & walk-in closet. Resort-style amenities: infinity-edge pool, bbq cabanas, walking paths, library, meeting room, formal dining room, movie theater & more. Unrivaled location across from Ala Moana Center & one block from Ala Moana Beach Park puts water sports, dining, shopping, entertainment & more just outside your doorstep.



Office License
RB-18153

Sachi Braden

Sachi Hawaii
CEO, Founder, & Principal Broker | RB-16308
808.596.8801
info@sachihawaii.com | www.sachihawaii.com



ハワイの不動産売買、別荘管理、賃貸管理に関するお問合せは日本語でどうぞ
サチハワイ総合不動産会社ーハワイ高級物件のエキスパート

\$2,195,000



2321 NIUMALU ROAD

Lihue, Kauai | 4,140 SQFT | 37,723 SQFT Land
4BR/3.5BA | MLS# 658616 | \$2,195,000

Located at the end of a charming private country road, this waterfront estate offers tranquility and privacy paired with the convenience of Lihue. Step onto the new ipe front deck and through the dramatic front doors into a great room with unmatched views of the Haupu Mountain range. High ceilings, arched doorways, and maple wood floors lend a contemporary flair. Extras include laundry room, attached two-car garage, and ground-floor primary with spacious en suite. This exceptional home boasts an abundance of room for entertaining. Open-concept kitchen and living room flow seamlessly into the outdoor living space. Sip your morning coffee or dine al fresco on the protected lanai while enjoying views of the rugged mountains.



Lynda Gill
Realtor (S), RS 63088
808.346.0056
lyndagill@hawaiilife.com
lyndagill.com



HAWAI'I LIFE

Forbes
GLOBAL PROPERTIES



\$1,995,000



PRIVATE RESORT HAWAII HOME

Waikoloa Village, Big Island | 2,854 SQFT
5BR/4BA | MLS# 660350 | \$1,995,000

Savor gorgeous mountain, ocean and sunset views from this custom-built Hawai'i home with pool, jacuzzi, outdoor bar area and a submarine! With luxury finishes throughout and resort-style amenities, it is the ideal place for entertaining family and friends. Located in Waikoloa Village with close proximity to Big Island beaches, restaurants, shopping and golf courses, this turnkey furnished 5-bedroom, 4-bath home offers the Hawai'i lifestyle at its finest.



COLDWELL BANKER
ISLAND PROPERTIES

75-5799 Alii Drive Unit A3, Kailua-Kona, HI 96740

Hawai'i Global Luxury Group

Kurtis S. Becker | 808.430.6785
Brandy Shibuya | 808.936.4540
Carl N. Hulen | 808.333.6778
kbkonarealestate@gmail.com
www.hawaiiigloballuxury.com





\$1,885,000

LUXURY CONDO RESIDENCE

Honolulu, Oahu | 1,327 SQFT
3BR/4BA | MLS# 202206453
\$1,885,000

Live, work, and play at one of Honolulu’s finest high rises in the award-winning Ae’o. This unit is the most highly desired stack. Upgraded electronic shades throughout open to views and offer added privacy. Immaculate corner residence includes two primary suites with walk-in closets, three bedrooms with soaking bathtubs, and two assigned parking stalls. Living area features floor-to-ceiling walls of glass and open kitchen/dining room with views. Well-appointed gourmet kitchen with quartz countertops and stainless-steel Bosch appliances. Resort-like amenities include two pools, hot tub, private BBQ cabanas, fitness center, theatre, media room, guest suites, dog park, and more. Conveniently located nearby world-class shopping, fine dining, and the beach! Welcome to luxury living!



Marti Hazzard
RA, Luxury Property Specialist
RS-62782
Cell: 808.478.1200
martih@cbrealty.com
ColdwellBankerLuxury.com



Ashley Clagstone
RA, Luxury Property Specialist
RS-80577
Cell: 808.518.8918
ashley.clagstone@cbrealty.com
OahuMetro.com
ColdwellBankerLuxury.com



\$1,850,000



AEPO NEI HOMESITE #19

Kukui'ula, Kaua'i | 12,712 SQFT Land
MLS# 659882 | \$1,850,000

Breathtaking southerly views over the 8th green of Kukui'ula, epic sunsets, and an unmatched evening sky will be yours to share from this elevated location in the newest community, Aepo Nei. Herbaceous scents carried on ocean breezes fill your home. Emerald contours unfold before you. Homesite 19 offers a unique opportunity to create a spacious island retreat on the sunny South Shore of Kaua'i, nestled at the heart of the network of hiking and biking trails that lead to the abundant world-class amenities of Kukui'ula, including The Lake and The Farm.

Jeff Skinner

(R)
 Real Estate Sales Executive
jskinner@kukuiula.com
 808.339.1308
www.kukuiula.com



Suzanne M. Harding

(RB)
 Real Estate Sales Executive
smharding@kukuiula.com
 808.651.5737
www.kukuiula.com

SOLD



WAIKOLOA BEACH
RESORT, HALI'I KAI 8-E

Waikoloa, Big Island | 1,403 SQFT
3BR/2BA | MLS# 655980 | \$1,250,000

Villa 8-E single level, corner, ground floor unit positioned along the 7th fairway with premium ocean views. Wood floors and tiled throughout, central a/c, wood, gourmet kitchen, custom cabinets, upgraded counter tops, bar seating, stainless steel appliances. Owners and their guests will enjoy the Hali'i Kai Ocean Club with pacific blue views of the Kohala coastline, Maui, a lagoon style pool, sandy spa, keiki pool, fitness cabana, bar and grill, seasonal whales and year around colorful sunsets. Practice tee, tennis and half basketball court. Detached garage with golf cart included in sale.



Renée H. Kraft
REALTOR® Broker RB-23004
Luxury Property Specialist
808.345.2108
www.SearchHawaiiProperty.com
Renee@SearchHawaiiProperty.com
Offices in Mauna Lani Resort, Kapaau, coming soon Niumalu Marketplace in Kailua-Kona

NEXT ISSUE:
SEE YOUR
HOME HERE!



DISTINCTIVE
COLLECTION
by
Better Homes
and Gardens
REAL ESTATE®
ISLAND LIFESTYLE



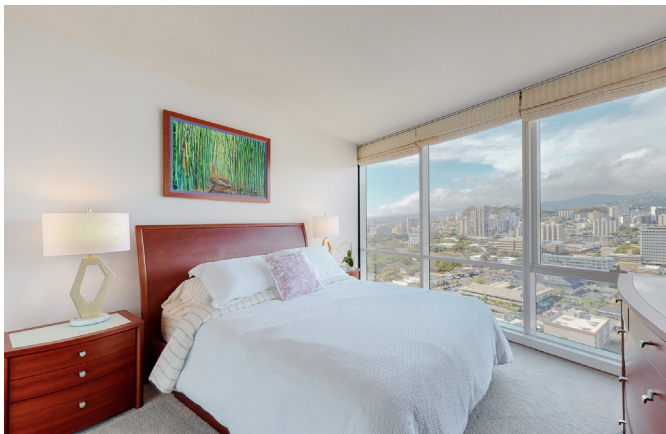
\$1,200,000



MOANA PACIFIC UNIT #2403

Honolulu, Oahu | 1,248 SQFT
3BR/2BA | MLS# 202207732
\$1,200,000

Enjoy sweeping ocean, mountain, and rainbow views in the heart of O'ahu from this ready-to-move-in beautifully refreshed condo. Sold with an extra-large walk-in storage unit (TMK # 1.2.3.010.028.1383) on the 5th floor. Reserve the movie theatre, fully loaded fitness facility, and party rooms with the use of the kitchen on the 6th floor. Additional shared amenities with the West tower are 2 tennis courts, walk/jog path, golf cage, putting greens, swimming pool, spa on manicured grounds. Pet-friendly (two up to 25 lbs), 24/7 security, front desk, and EZ walking distance to Ala Moana shopping center, restaurants, near Ward Center, Ala Moana Beach Park, hospitals, downtown Honolulu, and the airport.



MOKULANI
Properties, inc.
RB.19068



Mary Anne Bruno
RB.15787, REALTOR Principal Broker CNE SRES president
Cell/text 808.282.2583
@ma2822583HI
ma2822583@MOKULANIproperties.com
www.MOKULANIproperties.com



\$1,195,000



2221 KAPILI RD #30

Koloa, Kauai | 1,098 SQFT
1BR/2BA | MLS# 661002
\$1,195,000

A sought-after Poipu resort on Kauai, Poipu Kapili Unit #30 offers an open floor plan, spacious enough for full-time living. Located in Kauai’s VDA, the condo has a history of successful vacation rental history. Second-story condos are coveted for their unobstructed views and added security; an elevator makes carrying grocery bags and luggage a breeze. With tile flooring throughout, a design that promotes exceptional airflow, and an AC unit in the bedroom, you’ll have no trouble beating the heat on those warmer summer nights. Of course, you can always keep cool with a dip in the pool. In addition to the ocean view pool, Poipu Kapili also features multiple community barbecues, as well as tennis and pickle-ball courts.



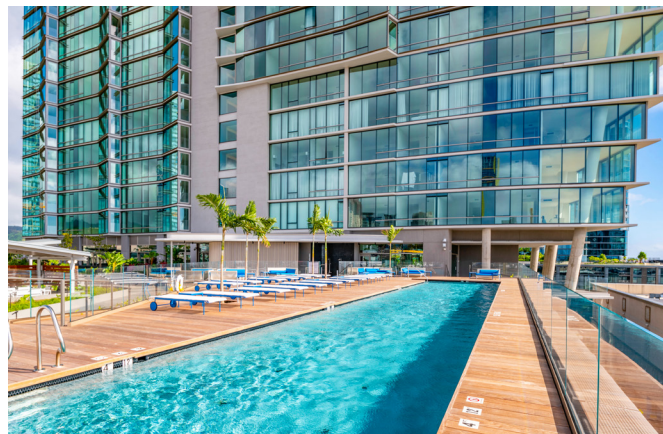
Lynda Gill
Realtor (S), RS 63088
808.346.0056
lyndagill@hawaiilife.com
lyndagill.com



HAWAI'I LIFE



\$870,000



1001 QUEEN STREET 3013

Honolulu, Oahu | 622 SQFT | 1BR/1BA
MLS# 202206705 | \$870,000

Beautiful 1 bed/1 bath Ae'o condo with storage room and one parking stall in Ward Village. Enjoy urban living in the heart of Kakaako with direct access to Whole Foods market. This must-see unit comes with premium Bosch stainless steel appliances, hardwood floors, motorized shades throughout the unit, full size washer/dryer, and floor-to-ceiling windows showcasing mountain and sunset views. This home features resort-like amenities such as a rooftop terrace, lap pool, fitness center, theater, children's play area, outdoor barbecue and dining cabanas, and more. Centrally located near theaters, dining, and world-class shopping at Ala Moana Shopping Center.



List

Sotheby's
INTERNATIONAL REALTY



Esther Park Kusunoki

REALTOR®, Senior Vice President
ABR CHMS CRS GRI SRS, RB-21002
808.489.6733
epark@listsir.com
한국어 서비스 가능



COMING SOON!



ISLAND RESIDENCE #6304
PARK LANE ALA MOANA

Honolulu, Oahu | 2,788 SQFT | 3BR/3.5BA

Welcome home to this one-of-a-kind turn-key residence in Park Lane! Park Lane #6304 is one of only nine units with a private pool, spa, yard and an attached garage. This 3-bedroom, den, 3.5-bathroom provides the best elements of a single-family home with the consummate indoor-outdoor island lifestyle. Enjoy the luxury of having an attached garage which provides direct access to your residence and the private, secure elevator access to the world's largest open-air luxury shopping destination, Ala Moana Shopping Center that's only steps away from your residence.



Emi A. Rhodes
Compass
Realtor Broker | RB-23279
808.457.8993
emi.rhodes@compass.com



COMPASS

\$650,000



HOKULI'A, LOT 18 81-569 KAIUE ST

Hokuli'a, Big Island | 1.69 AC
MLS# 660371 | \$650,000

A dream location for the Hawaiian home of your dreams ~ These premium estate home sites feature stunning sunset, ocean, coastline, and golf course views. Our 1+ acre homesites offer privacy and tranquility within one of Hawaii's most prestigious communities. With your membership to The Club at Hokuli'a you and your family will enjoy world class golf, fine or casual dining, access to our fitness Hale, tennis & pickleball facilities, and our 3 miles of coastline park. We have three lots available, starting at \$450,000. For more information, call Phil or Yvonne.



Yvonne J. Khouri-Morgan
Broker - Senior Advisor | RB-13392
The Mauna Lani Portfolio
808.937.4466
yvonne@alohalife.net
www.HawaiiResortLuxuryHomes.com



Philip Fukushima
Broker - Senior Advisor | RB-18811
The Mauna Lani Portfolio
808.989.3200
philip.fukushima@corcoranpacific.com
corcoranpacific.com





EXCEPTIONAL PROPERTIES DESERVE EXCEPTIONAL AGENTS



Terry Alling
(808) 633-3382
REALTOR(S)



Maureen Atkinson
(808) 268-8833
REALTOR(B)



Walter Bissett
(808) 870-9920
REALTOR(S)



Max Blair
(808) 866-2334
REALTOR(S)



Linda Bordignon
(808) 280-3054
REALTOR(B)



Karen I. Browne
(808) 344-1682
REALTOR(S)



Al Chiarella
(808) 276-7777
REALTOR(B)



Ray S.F. Chin
(808) 344.2677
REALTOR(B)



Meghan Clair
(808) 463-8485
REALTOR(S)



Kim Insley-Morrell
(808) 276-7766
REALTOR(S)



Evelyn Jaramillo
(808) 294-0858
REALTOR(S)



Riette Jenkins
(808) 870-4073
REALTOR(B)



Kristen Kingwell
(808) 281-7313
REALTOR(S)



Amy Lam
(808) 385-0768
REALTOR(S)



Nam Le Viet
(808) 283-9007
REALTOR(S)



Wendy Macaheleg
(808) 269-1777
REALTOR(B)



David McAlear
(808) 250-6754
REALTOR(S)



Bruce McDonald
(808) 283-4189
REALTOR(B)



Gary Mooers
(808) 891-8989
REALTOR(B)



Rhonda Smith-Sanchez
(808) 205-2175
REALTOR(B)



Peggy Lyn Speicher
(808) 495-3525
REALTOR(B)



Stephen Still
(808) 264-5042
REALTOR(B)



Sherrie Stinger
(808) 283-8050
REALTOR(S)



Kento Tanaka-Tamaki
(808) 357-4219
REALTOR(S)



Daniel Toth
(808) 268-7614
REALTOR(S)



Jesse Wald
(808) 446-5841
REALTOR(B)



Jeff Walter
(808) 268-2566
REALTOR(S)



Christine Warner
(808) 283-8546
REALTOR(S)



Lori Wash
(808) 250-9356
REALTOR(S)



Byron Barth
(808) 212-5823
REALTOR(S)



Roberta Charles
(808) 652-2136
REALTOR(B)



Ilona Coffey
(808) 635-1495
REALTOR(B)



Brenda Crawford
(808) 651-8234
REALTOR(B)



Shannon French
(808) 639-8116
REALTOR(S)



Kelly Liberator
(808) 639-2061
REALTOR(B)



Richard Shaw
(808) 639-0774
REALTOR(B)

THE LEADER IN LUXURY

Across the neighbor islands, our Global Luxury Specialists
sell more **\$2M+** luxury properties than anyone else.



Geoffrey Cook
(808) 281-6666
REALTOR(S)



Jesseca Curry
(808) 264-8914
REALTOR(B)



Halleh Dunncliffe
(808) 269-8888
REALTOR(B)



Mary Anne Fitch
(808) 250-1583
REALTOR(B)



Patrick Franta
(808) 280-7728
REALTOR(S)



Jolanta Frazier
(808) 283-6262
REALTOR(B)



Janice Goodnight
(808) 298-9678
REALTOR(S)



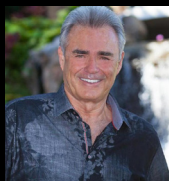
Erin Haywood
(808) 264-8037
REALTOR(S)



Addie Heiner
(808) 357-6980
REALTOR(B)



Gary Heiner
(808) 357-6981
REALTOR(S)



Robert Myers
(808) 283-3067
REALTOR(S)



George Nunes
(808) 385-4665
REALTOR(B)



Marcus Nygren
(808) 463-5744
REALTOR(B)



Carol Olsen
(808) 298-5296
REALTOR(S)



Slayde Omura
(808) 344-0084
REALTOR(S)



Amy Ruff
(808) 214-7886
REALTOR(S)



Betty Sakamoto
(808) 870-7062
REALTOR(B)



Roy Sakamoto
(808) 870-7060
REALTOR(B)



Dano Sayles
(808) 280-6532
REALTOR(B)



Melissa Smith
(808) 298-6810
REALTOR(B)



Volker Weiss
(808) 280-6882
REALTOR(S)



Mardi Werner
(808) 250-1769
REALTOR(S)



Damien Zanolini
(808) 281-4669
REALTOR(S)



Sonya Zepeda
(808) 321-9910
REALTOR(S)



**BIG
ISLAND**



Kurtis Becker
(808) 430-6785
REALTOR(S)



Karen Ostlie
(808) 937-1174
REALTOR(S)



Marco Silva
(808) 557-8921
REALTOR(B)



Derinda Thatcher
(808) 960-3433
REALTOR(B)



Carla Womack
(808) 896-6768
REALTOR(S)



COLDWELL BANKER

**ISLAND
PROPERTIES**



MLS

RB-16822

ISLANDPROPERTIES.COM | (808) 875-7000

CELEBRATING *Sold Out*

The 68 Hapuna Beach Residences on America's #1
beach are officially all spoken for.



For Hapuna Beach Residences, obtain the Developer's Public Report for a Condominium required by Hawaii law and read it before signing a binding sales contract. No federal or state agency has judged the merits or value, if any, of these properties. This does not constitute an offer to sell or a solicitation of any offer to buy where prohibited by law.



THE BEST IS YET TO COME...

Just upslope from the Beach Residences, set alongside the championship Hapuna Golf Course and with dramatic Kohala Coast views, are exciting new collections of expansive homesites and custom residences. With views that extend all the way to Maui, each and every homesite is a rare opportunity to create your vision of Hawaii – surrounded by the incomparable amenities of the Mauna Kea Resort. Design and build your own, or select from our portfolio of turnkey residences, which can be yours even fully furnished. It's paradise — at a higher level.



Hapuna Beach Residences

AT MAUNA KEA RESORT

808.557.8689

Info@MaunaKeaLiving.com

MaunaKeaLiving.com

\$1,895,000



MALIU RIDGE

North Kohala, Big Island
1,784 SQFT | 1.64 AC
3BR/2BA | MLS# 658869
\$1,895,000

Welcome to Hale Ehiku Hakala (House of Seven Gables)! The house is a work of art framed by a lush garden with all the colors of the tropics in abundance! Numerous windows give a wide view of the beautiful, park-like grounds with tropical plants. The unique, multilevel floor plan provides privacy along with views in every direction. Generous use of glass and awning windows provide fresh air flow and natural light in all weather conditions. The home shows pride of ownership with remodeled bathrooms and kitchen that add to the beauty of the interior. The richness of the wood fits in perfectly with the quality of the house and the gorgeous outdoor setting. Enjoy the serenity and the peaceful lifestyle. This home is a perfect example of a “one of a kind” rare find!



Tomoko Matsumoto
REALTOR® Principal Broker, Owner
68-1330 Mauna Lani Drive, Suite 104
Kohala Coast, HI 96743
www.HapunaRealty.com
Tomo@HapunaRealty.com
808.557.8689



Margery Mayo
REALTOR® Broker in Charge | RB-17852
68-1330 Mauna Lani Drive, Suite 104
Kohala Coast, HI 96743
www.HapunaRealty.com
margerymayo@margerymayo.com
Office: 808.657.4292 | Cell: 808.987.6385





\$3,295,000



KOHALA RANCH

North Kohala, Big Island
3,372 SQFT | 11.37 AC
3BR/3Full/2HalfBA
MLS# 657111 | \$3,295,000

This 11+ acre private estate is located in the Summit section of Kohala Ranch, about 2300ft above sea level, looking down the coast. The property has the most spectacular unobstructed views all around; Hualalai, Mauna Loa, Mauna Kea, Maui and the Pacific Ocean... with year-round sunsets! The home was meticulously renovated and upgraded recently. 75 x 14 ft, 4 ft deep salt water pool with solar water heater is perfect for a swimmer! Some of the features include ocean views from every room, separate office, ADA access, oversized 3-car garage with finished interior, Koi pond, outdoor summer kitchen, outdoor shower, and more.



Tomoko Matsumoto

REALTOR® Principal Broker, Owner
Hapuna Realty
68-1330 Mauna Lani Drive, Suite 104 Kohala Coast, HI 96743
www.HapunaRealty.com | Tomo@HapunaRealty.com
808.557.8689



ROAM

Maui

MAUI'S FIRST MEMBERS-ONLY PRIVATE AIR SHUTTLE



BOEING VIP JETS
LUXURY CONCIERGE SERVICE
PRIVATE AIRPORTS

ROAM Maui is designed for Maui home and property owners who travel frequently to and from the mainland.

Weekly flights connecting Maui to Seattle, San Jose and Los Angeles.

For more information, please visit us or call .

ROAM-MAUI.COM
1-800-563-ROAM

ROAM Maui memberships are offered to residents of five exclusive residential communities on Maui: Kapalua Resort Association, Kaanapali Golf Estates, Makena Golf & Beach Club, Kula Community Association & Wailea Resort Association.

Luxury Home Magazine®

HAWAII

Issue 17.3