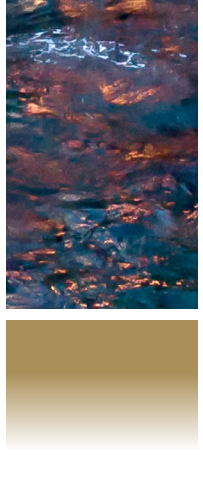
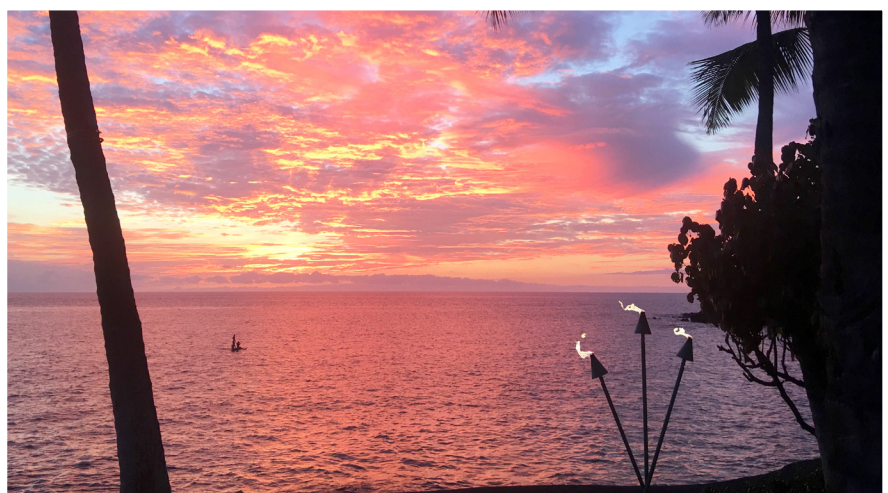




\$27,740,000



## HA'IKAU POINT ESTATE

Kona, Big Island | 1.32 AC | 7BR/13BA (4 Homes) | MLS# 649077 | \$27,740,000

Located on the legendary Ha'ikau Point in Kailua-Kona, this unparalleled oceanfront estate comprises one main home on the point, two additional oceanfront bungalows and another building with a large office, media room and 4-car garage. There is 600+ ft of private ocean frontage overlooking Keauhou Bay, He'eia Bay and the Pacific Ocean.

Protected by an offshore reef, the estate is the ideal vantage point for breathtaking Kona sunsets each evening and offers multiple access points to the bays and ocean. Ha'ikau Point is an extraordinary Hawaii estate on its own peninsula. Multiple acquisition options are available.



**COLDWELL BANKER**  
**ISLAND PROPERTIES**

75-5799 Alii Drive Unit A3, Kailua-Kona, HI 96740

**Kurtis S. Becker**

REALTOR RS-78042

Coldwell Banker Island Properties

Hawai'i Global Luxury Group

808.430.6785

kbkonarealestate@gmail.com

www.hawaiigloballuxury.com

