

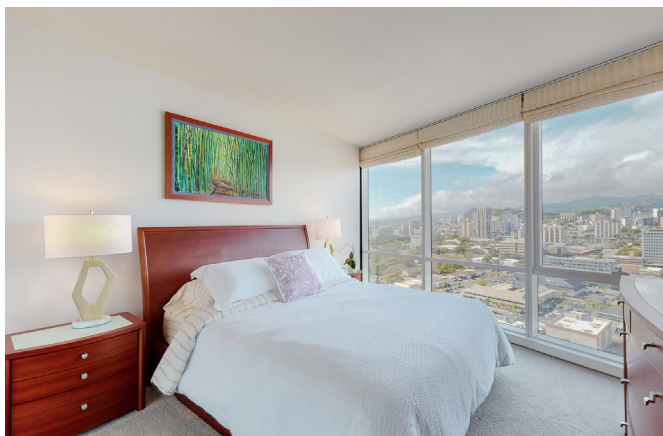
\$1,200,000



MOANA PACIFIC UNIT #2403

Honolulu, Oahu | 1,248 SQFT
3BR/2BA | MLS# 202207732
\$1,200,000

Enjoy sweeping ocean, mountain, and rainbow views in the heart of O'ahu from this ready-to-move-in beautifully refreshed condo. Sold with an extra-large walk-in storage unit (TMK # 1.2.3.010.028.1383) on the 5th floor. Reserve the movie theatre, fully loaded fitness facility, and party rooms with the use of the kitchen on the 6th floor. Additional shared amenities with the West tower are 2 tennis courts, walk/jog path, golf cage, putting greens, swimming pool, spa on manicured grounds. Pet-friendly (two up to 25 lbs), 24/7 security, front desk, and EZ walking distance to Ala Moana shopping center, restaurants, near Ward Center, Ala Moana Beach Park, hospitals, downtown Honolulu, and the airport.



Mary Anne Bruno

RB.15787, REALTOR Principal Broker CNE SRES president
Cell/text 808.282.2583
@ma2822583HI
ma2822583@MOKULANIproperties.com
www.MOKULANIproperties.com

