

# LUXURY HOME<sup>®</sup>

M A G A Z I N E

*Hawai'i*

KAUAI • OAHU • MAUI • MOLOKAI • LANAI • BIG ISLAND

ISSUE 18.5



LUXURYHOMEMAGAZINE.COM

Luxury Living at Hokuli'a, Big Island  
By Carrie Nicholson, Pages 30 & 31



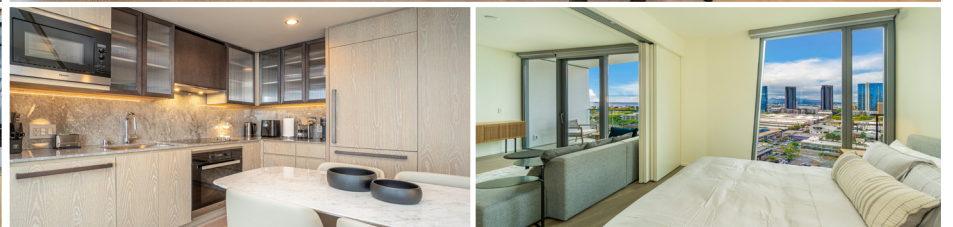


### #2701 \$1,475,000

- 1 BD, 1 BA, Net Living - 739 sf, Lanai - 92 sf
- 1 Parking Stall, Views - Marina, Ocean & Sunset

### #1503 \$870,000

- 1 BD, 1 BA, Net Living - 509 sf, Lanai - 58 sf
- 1 Parking Stall, Views - Ocean, Park & City



### #2701 \$1,475,000

- 1 BD, 1 BA, Net Living - 739 sf, Lanai - 92 sf
- 1 Parking Stall, Views - Marina, Ocean & Sunset

### #1503 \$870,000

- 1 BD, 1 BA, Net Living - 509 sf, Lanai - 58 sf
- 1 Parking Stall, Views - Ocean, Park & City



**John "Jack" Tyrrell**  
 President  
 Principal Broker, CRS, CRB  
 CPA (not in public practice)  
 Lic. # RB-19880  
 E: Jack@jtchawaii.com  
 C: 808.306.6933



**May Lew Tyrrell 廖富溪**  
 Executive Vice President  
 Broker-In-Charge, MBA, GRI, CRS, CRB, CIPS  
 Lic. # RB-22693  
 WeChat: Mayinhawaii (普通话)  
 E: May@jtchawaii.com  
 C: 808.223.3364





# WAIEA

## WARD VILLAGE



#1906 **\$4,300,000**

- 3 BD, 2.5 BA, Net Living - 2,015 sf, Lanai - 78 sf, Foyer: 130 sf
- 2 Parking Stalls, Views - Diamond Head, Ocean, Coastline, Mountain & City



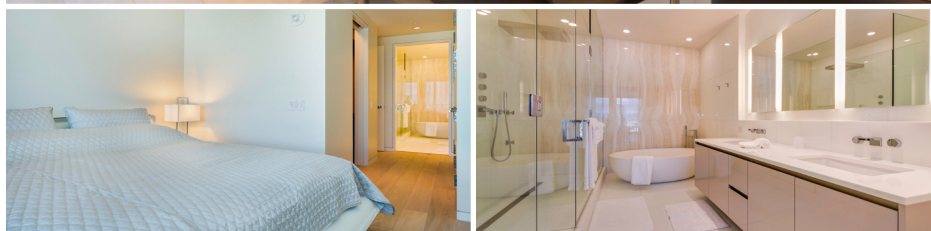
#1603 **\$1,800,000**

- 1 BD, 2 BA, Net Living - 1,208 sf, Lanai - 69 sf
- 1 Parking Stall, Views - Ocean, Marina, Mountain & Sunset



#2105 **\$2,850,000**

- 2 BD, 2 BA, Net Living - 1,447 sf, Lanai - 159 sf, Foyer - 63 sf
- 2 Parking Stalls, Views - Ocean, Mountain, Marina & Sunset



For More Information:  
808 532 3330  
[www.jtchawaii.com](http://www.jtchawaii.com)

Jack Tyrrell & Company  
 @jtchawaii  
 @jtchawaii

**JACK TYRRELL**  
& COMPANY

A Real Estate Brokerage Corporation

\* The information presented herein is provided as is, without warranty expressed or implied of any kind. Information herein deemed reliable but not guaranteed.



\$8,750,000



281 A PORTLOCK ROAD

Honolulu, Oahu | 9,458 SQFT  
14,682 SQFT Land | 5BR/6.5BA  
MLS# 202320226 | \$8,750,000

*Mesmerizing Beachfront Estate...* Stunning Portlock beachfront residence offers picture perfect postcard views of Diamond Head, the turquoise waters of Maunalua Bay & the sandy shores of Oahu's southeast shoreline. This luxurious residence complete with 5-bedrooms, 6-full & 1-half bath offers grand proportions & multiple formal & casual lounge spaces throughout its indoor/outdoor floor plan. This gorgeous residence with tropical landscape is walled & gated & offers a considerable motor court leading to its 4-car enclosed garage. Enjoy nearby restaurants & some of Hawaii's most beautiful beaches & scenic hiking trails.



COLDWELL BANKER  
REALTY



TA

TRACY ALLEN  
LOCAL EXPERTISE | GLOBAL REACH





\$6,250,000



## 1212 MOKULUA DRIVE

Kailua, Oahu | 6,157 SQFT  
11,909 SQFT Land | 7BR/5BA  
MLS# 202317321 | \$6,250,000

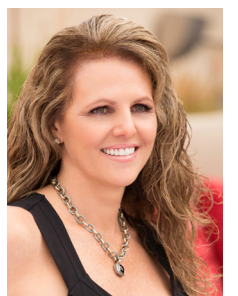
*Live, Love, Lanikai!* Wake to mesmerizing coastline views overlooking brilliant turquoise waters and the twin Mokulua Islands beyond from this sprawling oceanfront beach house located in one of Oahu's most coveted seaside neighborhoods. This timeless residence offering over 5,100 square feet of interior living has been in the same family for over 60-years and is perfect for extended family use and endless enjoyment. This oceanfront compound is awaiting your personal touches and is conveniently located to nearby golfing, restaurants, and cafés + Kailua town known for its endless charm. Welcome home, this is Life, Lanikai Style!

**Tracy Allen**

Vice President, RA, RS-46610  
Global Luxury Ambassador  
Luxury Property Specialist  
808.927.6415

Tracy@TracyAllenHawaii.com  
www.TracyAllenHawaii.com

#1 Agent in Hawaii, Coldwell Banker Realty





\$4,650,000



# 1037 KOLOA STREET

Honolulu, Oahu | 4,518 SQFT  
10,607 SQFT Land | 3BR/3.5BA  
MLS# 202316866 | \$4,650,000

*Island Retreat!* Situated on a wonderful street in Kahala, one of Honolulu’s most coveted neighborhoods, rests this fabulous 3-Bedroom + separate Den/exercise room, 3-full & 1-half bath residence. From the moment of arrival, one is enveloped by a sense of utmost privacy amidst lush tropical landscape, fruit & flowering trees, and a tropical water feature cascading into a free form pool & spa. This lovely home with Eucalyptus hardwood floors & custom glass Mahogany doors, pocket revealing wide open living spaces & a seamless integration between indoor/outdoor island living. Ideally located only a few blocks to the beach, The Kahala Hotel, dining/shopping & more!



**Tracy Allen**  
Vice President, RA, RS-46610  
Global Luxury Ambassador  
Luxury Property Specialist  
808.927.6415  
Tracy@TracyAllenHawaii.com  
www.TracyAllenHawaii.com  
#1 Agent in Hawaii, Coldwell Banker Realty

**TA**  
TRACY ALLEN  
LOCAL EXPERTISE | GLOBAL REACH



**COLDWELL BANKER  
REALTY**



© 2022 Coldwell Banker Realty | 1314 S King Street, 2nd Floor Honolulu, Hawaii 96814 | (808) 596-0456 The information contained herein, while not guaranteed, has been obtained from sources believed to be reliable. All square footages are approximate and may differ from the tax records.





Exceptional Designs with Talent to Execute



SERVING ALL HAWAIIAN ISLANDS & BEYOND

808 879 0938



PLEASE VISIT OUR GALLERY  
[padilladesigns.com](http://padilladesigns.com)

J.ANTHONYMARTINEZPHOTOGRAPHY





Unit 4-704 - SOLD



Unit 1-706 - SOLD



Unit 3-703 - SOLD



# SOLD AT THE KA'ANAPALI ALI'I RESORT

## Ka'anapali, Maui

We are honored to have helped so many Buyers and Sellers and are looking forward to the future. The following properties were closed in the last three months at the Ka'anapali Ali'i Resort.

- Ka'anapali Ali'i Unit 4-704, \$5,250,000
- Ka'anapali Ali'i Unit 1-706, \$6,000,000 - Represented Buyer and Seller
- Ka'anapali Ali'i Unit 3-703, \$4,450,000 - Represented Buyer and Seller



SOLD



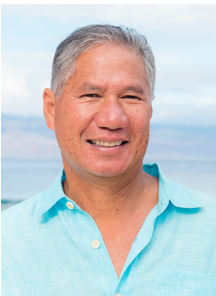
Leah Harbottle

Realtor®-Broker, Lic. #22910  
Cell: 808.446.4551  
Toll Free: 866.661.7887  
Fax: 808.661.8358  
Leah-Whalers@KW.com  
www.KaanapaliLuxuryLiving.com



Gregory Harbottle Inc. R (PB)

Luxury Property Specialist, Lic. #19615  
Cell: 808.385.8059  
ghthkh@msn.com  
www.KaanapaliLuxuryLiving.com





\* Founding or Prestigious Member  
Prestigious Members are currently featured in  
*Luxury Home Magazine®* and have averaged  
placement in 30 issues over the last 6 years.



# ISSUE 18.5

# INDEX



## Front Cover Home

Luxury Living at Hokuli'a, Big Island  
Pages 30 & 31  
Photography by PanaViz

## THE ISLAND OF MAUI

Gregory Harbottle Inc.*	8-9
Joanne L. Foxxe	32
Josh Jerman*	38
Leah Harbottle*	8-9

## THE BIG ISLAND

Angel Wannemacher	43
Carrie Nicholson	Cover, 30-31
Eileen Lacerte*	42
Hapuna Estates	48-49
Joni J. Metzler*	14-15, 21
Nohea at Mauna Lani	46
Penn Henderson	47
Renée H. Kraft	29
Tomoko Matsumoto*	50-51
Yvonne J. Khouri-Morgan*	18-19

## BUSINESS PARTNERS

Indich Collection*	11
Padilla Designs, LLC*	7

## THE ISLAND OF OAHU

Ambur Kiriu	39
Anna Achauer	44
Ashley Clagstone	45
Beth Chang	22-23
Christie Busto	20, 37
Esther Park Kusunoki*	36
Jennifer Lee Busto	20, 37
John "Jack" Tyrrell*	2-3
Ken K. Kawamoto	22-23
Luz Valeria Fukunaga	41
Marti Hazzard	45
May Lew Tyrrell*	2-3
Myron Kiriu	39
Noel Pietsch Shaw*	27
Orion Barels	17
Sherrie Sasaki	39
Tracy Allen*	4-6

## THE ISLAND OF KAUAI

Jeff Skinner	24-25
Suzanne M. Harding	24-25
Timbers Kaua'i	16

ISSUE	DEADLINE	CIRCULATION
18.6	11/02/23	12/20 - 02/22
19.1	01/17/24	02/23 - 04/12
19.2	03/06/24	04/13 - 06/14
19.3	05/08/24	06/15 - 08/15
19.4	07/08/24	08/16 - 10/21
19.5	09/04/24	10/22 - 12/17

<ahuihou



LUXURY HOME MAGAZINE®  
PACIFIC LUXURY LIVING™

501 Fourth Street, #854  
Lake Oswego, OR 97034

Phone: 808.499.5491

FOR ADVERTISING INFORMATION VISIT:

[luxuryhomemagazine.com](http://luxuryhomemagazine.com)

[info@lhmhi.com](mailto:info@lhmhi.com)

*The most comprehensive and targeted  
distribution in the area, bar none!*

LHM Media Group

Phone: 916.458.6010  
[info@lhmmediagroup.com](mailto:info@lhmmediagroup.com)  
[LuxuryHomeMagazine.com](http://LuxuryHomeMagazine.com)

Visit Our Blog:  
[LuxuryHomeMagazine.com/blog](http://LuxuryHomeMagazine.com/blog)

Chief Executive Officer  
Solar Hing

Chief Operations Officer  
Jessica Hing

Publishing Opportunities  
[publishing@lhmmediagroup.com](mailto:publishing@lhmmediagroup.com)

Published six times per year

©2023 LHM Media Group



**Made & Printed in the USA.**

Luxury Home Magazine® and [LuxuryHomeMagazine.com](http://LuxuryHomeMagazine.com) are protected trademarks of LHM Media Group. Publisher is an authorized Independent Distributor and Licensee for a market specific area of Luxury Home Magazine® and [LuxuryHomeMagazine.com](http://LuxuryHomeMagazine.com). Publisher is licensed through LHM Media Group. LHM Media Group is not responsible for the contents of the magazine or the acts or omissions of the publisher or its representatives and makes no representations or guarantees. Reproduction in whole or in part (including materials, photos and formats) in any form without written permission from LHM Media Group is prohibited. All submissions become the property of LHM Media Group and may be used in any print, digital, social and online media. All rights reserved.

The information contained in *Luxury Home Magazine®* is deemed reliable, but not guaranteed. Contact each individual agent to verify information, which is subject to change.





**"New colorway,  
Ginko Fan Jazzy Blue"**  
Visit one of our showrooms  
or website for Hawaii's best  
selection of Fine Oriental  
Carpets and Hawaiian Rugs



SERVICING ALL ISLANDS

[IndichCollection.com](http://IndichCollection.com)

**Honolulu - Nimitz Hwy**

Na Lama Kukui  
(formerly the Gentry Pacific Design Center)  
560 N. Nimitz Hwy #101, Honolulu, HI 96817  
808.524.7769  
Monday-Saturday: 9:30-5:30

**Honolulu - Ward Ave**

550 Ward Ave.  
Honolulu, HI 96814  
808.596.7333  
Monday-Saturday:  
9:30-5:30, Sunday: 10-4

**Maui**

259 East Wakea Ave.  
Kahului, HI 96732  
808.877.7200  
Monday-Friday: 9:30-5

**Kona**

Kaloko Business Center V  
73-5617 Maiau St.  
Kailua-Kona, HI 96740  
808.329.6500  
Monday-Sunday: 10-6



# Aloha from Maresa

Say Aloha! Send editorial & advertising inquiries to [info@lhmhi.com](mailto:info@lhmhi.com)



We struggle with the right words to express our sadness and empathy for the people and animals affected by the August fires. Nothing we say can take away the pain and experience, so we offer our ear, our shoulder, our support as Maui takes each next step.

At *Luxury Home Magazine Hawai'i*, we are doing what we can to support our community by supporting the Hawai'i Community Foundation and through our existing relationships with Rotary and the special fund they have established. Throughout the state, our partners may be facing serious headwinds from health challenges to economic and financial losses. We will continue to work on behalf of our partners and readers to share and educate about available listings and services.

We will all get through these difficult times, and together we will be stronger in the future.

Mahalo,  
*Maresa Giovannini*  
Maresa Giovannini  
Editor in Chief



# ‘a‘ohe hana nui ke alu ‘ia

No task is too big when done together by all.

## IN THIS ISSUE







ILLUMINATE YOUR HOME'S EXTERIOR IN STYLE.  
SEE PAGES 30 & 31





## HAWAIIAN ESTATE HOME AT KOHANAIKI

Kohanaiki, Big Island | 7,200 SQFT | 1 AC | 4BR/4.5BA | MLS# 648886 | \$20,000,000

Hawaiian Paradise thrives at this Hawaiian Estate home perched on a lushly landscaped acre overlooking the Pacific Ocean. Zak Architecture created a crisp and clean symmetrical plan in their signature contemporary Hawaiian style, as the Douglas Durkin Design team simultaneously developed the rich color palette

of the finest architectural and interior design materials. The exquisitely furnished home of approximately 7,200 sq. ft. under roof features 2 Master Suites in the Main Residence and 2 separate Guest Suites. The Great Room opens to an expansive lanai and lawn area with an infinity edge lap pool and jacuzzi.



\$20,000,000



METZLER  
REALTY



Joni J. Metzler

(R) B

Metzler Realty

808.640.6832

Joni@MetzlerRealty.com

www.MetzlerRealty.com







# AWAKEN TO ALOHA


OCEANFRONT TOWNHOMES ON THE GARDEN ISLE

TIMBERSKAUAI.COM | 808.720.6677



TIMBERS KAUA'I

Ocean Club & Residences

 This does not constitute an offer to sell nor the solicitation of an offer to purchase made in any jurisdiction nor made to residents of any jurisdiction, including New York, where registration is required. Tower Kauai Lagoons LLC uses the Timbers Resort®, Timbers Collection® and certain other Timbers brand names under a limited non-transferable license in connection with the sales and marketing of the Hōkūāla Kauai™ – A Timbers Resort® (the “Project”). If this license is terminated or expires without renewal, the Project will no longer be identified with nor have any right to use the Timbers® marks and names. Artistic Renderings depicted in this advertisement are subject to change. All rights reserved.





\$15,749,000



## 61-465 KAMEHAMEHA HIGHWAY

Haleiwa, Oahu | 6,514 SQFT  
26,995 SQFT Land | 7BR/5Full/3HalfBA  
MLS# 202301973 | \$15,749,000

Modern luxury surf lifestyle embodied in this 2018 built, dream estate fronting a famous right & left hand surf break at Chun's reef. This sandy beachfront compound features over 9,300 sqft. of permitted improvements, detached guest quarters, grandfathered-in seawall, & an infinity pool & hot tub overlooking the waves. A surfer's paradise situated on a nearly 27k sqft lot that boasts over 116' of linear beach frontage w/ almost 20' ceilings in the living room & over 9' ceilings. A new residence of this size may never be possible again here due to new stringent shoreline codes. Thermador appliances, 70 PV panels, 3 Tesla batteries, extensive use of Ipe, African Mahogany, Marble, Soapstone & more.



**COASTAL  
HAWAII GROUP**  
A TEAM OF COMPASS

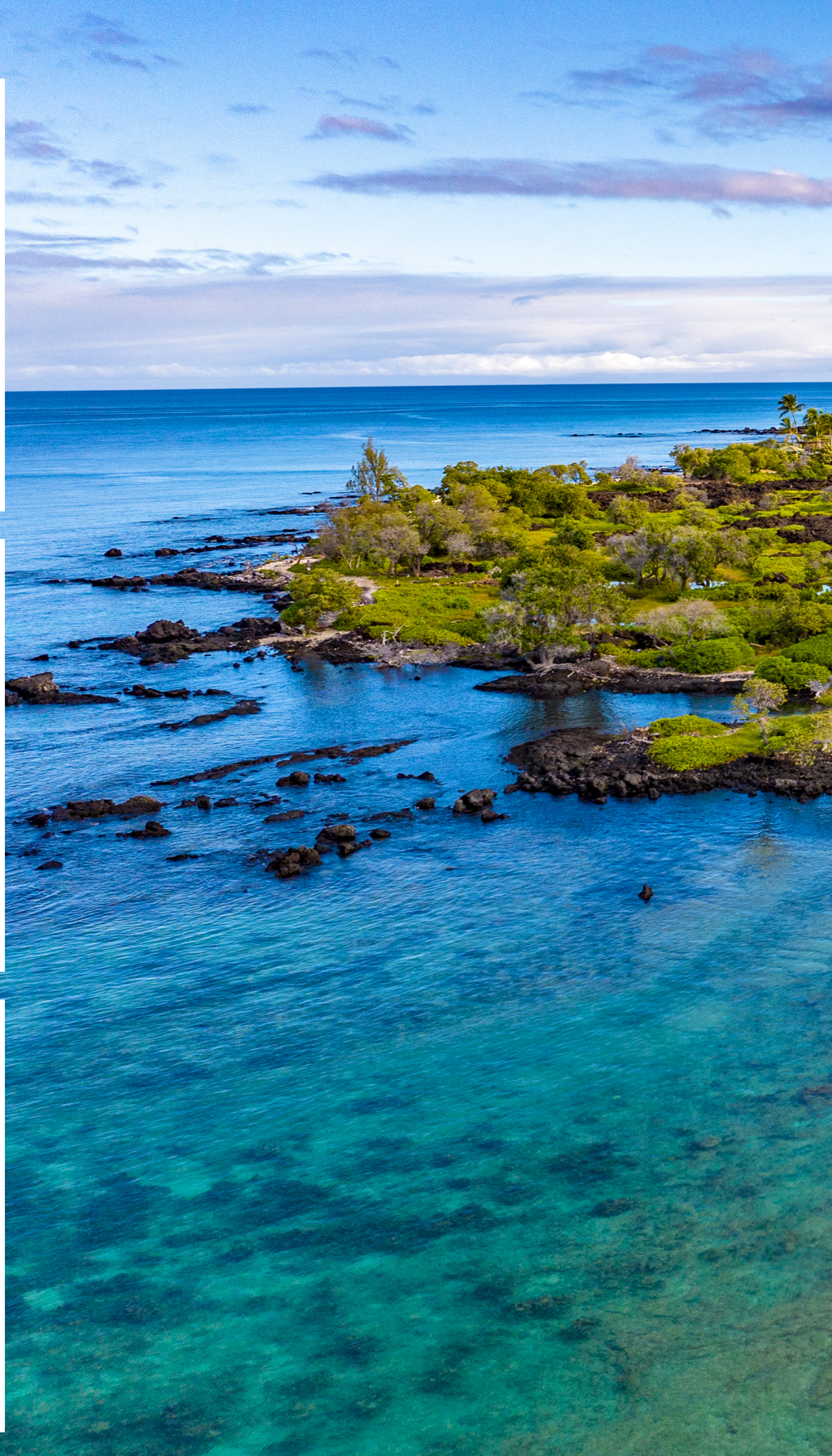
See Video:  
[www.ChunsReefEstate.com](http://www.ChunsReefEstate.com)

## Orion Barels

(S), BS Economics | RS 64269  
Luxury Property Specialist  
Top 100 Realtors in the State of Hawaii by Volume  
808.228.7195  
orion@coastalhawaii.com  
www.CoastalHawaii.com







# 69-1069 KOLEA KAI CIRCLE

Kamuela, Big Island | 5,131 SQFT | 0.71 AC | 4BR/4Full/2Half BA | MLS# 703813 | \$11,900,000

Welcome to the epitome of luxurious island living—the oceanfront Blue Wave at Kōlea, nestled within the prestigious Waikōloa Resort. This stunning oceanfront masterpiece redefines elegance and comfort with its 4 bedrooms, 4 full/2 half baths, and an array of impeccable features that cater to your every desire. Step through the grand entrance, past the waterfalls, over the Koi pond to astounding ocean views. Electronics and sound system upgraded to Control4. Bonus: 4-car garage, home theater, library, office, indoor hot tub, and

basketball court. Primary bedroom features a movable roof, which allows you to embrace the night sky. Infinity pool & spa merge with the horizon at the boundless expanse of the Pacific Ocean, “A” Bay, and spectacular sunsets. The sunsets here are nothing short of magical, painting the sky with hues of orange and pink as the day bids farewell. Steps to a pristine white sand beach, restaurants, boutiques & movie theaters. Perfect family retreat is also a highly successful vacation rental.



\$11,900,000



*corcoran*  
PACIFIC PROPERTIES

MAUNA LANI  
PORTFOLIO  
LUXURY  
REAL ESTATE  
BILLIONAIRE'S CLUB

REALM™  
EXCLUSIVE MEMBER



Yvonne J. Khouri-Morgan  
Vice President, BIC  
REALTOR® | RB-13392  
The Mauna Lani Portfolio  
808.937.4466  
yvonne@alohalife.net  
www.HawaiiResortLuxuryHomes.com



LuxuryHomeMagazine.com



\$9,998,000



Photos are virtually staged

GOLD COAST EXCLUSIVE

Honolulu, Oahu | 4,280 SQFT | 4BR/4BA  
MLS# 202305977 | \$9,998,000

Expansive sea, sky, and shoreline views from this fabulous double unit on the Gold Coast! Designed with one unit per floor to maximize the circulating trade winds, the 3019 Kalakaua building is perched over the Pacific Ocean at the foot of Diamond Head. Originally purchased as Apt 9 & 10 and then combined, this home features an interior staircase, elevator access on each floor, and 5,000 SQFT of living including exterior lanais. Architectural ceiling, lighting, kitchen, & bath designs. 4 parking stalls provided. This home affords a highly private lifestyle, with easy access to green open space at Kapiolani Park and to gourmet dining at neighboring restaurants, with nightlife of Waikiki & Ward Village nearby.



Jennifer Lee Busto  
Ph.D., REALTOR®, M.S. Law  
Principal Broker  
RB-20651  
808.864.2504  
Jennifer@JenniferBusto.com



Honolulu and beyond

Christie Busto  
REALTOR®-ASSOCIATE  
RS-85364  
808.469.6414  
Christie.Busto@gmail.com  
JustHomesHawaii.com | RB-23191





\$7,900,000



# LOT 35 AT KOHANAIKI

Kohanaiki, Big Island | 1.28 AC  
MLS# 668643 | \$7,900,000

Overlooking the 14th and 15th holes at the Kohanaiki Golf Club, Lot 35 offers stunning golf course and ocean views. The residential community and Kohanaiki Club are built around luxury, sustainability and world-class amenities. The Kohanaiki Club is a private equity club and membership is by invitation only to Kohanaiki Property Owners.

METZLER  
REALTY



Joni J. Metzler

(R) B

Metzler Realty  
808.640.6832

Joni@MetzlerRealty.com  
www.MetzlerRealty.com







# 4131 BLACK POINT PLACE

Honolulu, Oahu | 2,997 SQFT | 9,650 SQFT Land | 3BR/3Full/2Half BA | MLS# 202302012 | \$7,200,000

Dramatic oceanfront location at the end of Black Point Place with amazing history. Named “The Crest” and created by Earl Nisbet, a protégé of Frank Lloyd Wright, this home is way ahead of its time. Mr. Nisbet understood the magic of the ocean and designed for views from almost every room; a large courtyard accomodates parking for the many guests who will want to enjoy the ocean views & sounds with you.

The home’s original design still shines through and with the detailed renovation in 2017 makes it “one of a kind” for the Black Point area. A short walk gives you access to the ocean-fed community pool, and several walkways to the ocean for swimming, snorkeling or surfing. Enjoy wonderful ocean views and security in this gated community.





\$7,200,000



**Ken K. Kawamoto**  
REALTOR-ASSOCIATE® | RS-74928  
Luxury Property Team Member  
808.230.7295  
KenK@cbpacific.com



**Beth Chang**  
REALTOR®, RB-14022  
Luxury Property Specialist, VP  
808.478.7800  
Beth@BethChang.com  
www.BethChang.com







# EXQUISITE MISSION-STYLE HOME

Kukui'ula, Kaua'i | 2,767 SQFT | 22,271 SQFT Land | 5BR/5BA | MLS# 670394 | \$6,395,000

Experience luxury living in this brand new 4-bed + flex room (or office), 5-bath smart home in the Kaulu neighborhood. Inspired by Hawai'i's Mission-style era, it blends elegant design with cutting-edge technology. Enjoy Savant smart home integration, Lutron lighting, and security cameras. European white oak floors, rift sawn oak cabinets, and

Caesarstone countertops add sophistication. The kitchen features top-of-the-line appliances, and the bathrooms boast high-end fixtures. Outside, a private pool, spa, and guest house offer relaxation. This masterpiece is in Kaulu, between The Shops at Kukui'ula and the Clubhouse, with golf course views.





\$6,395,000



**Jeff Skinner**  
(R)  
Real Estate Sales Executive  
jskinner@kukuiula.com  
808.339.1308  
www.kukuiula.com



**Suzanne M. Harding**  
(RB)  
Real Estate Sales Executive  
smharding@kukuiula.com  
808.651.5737  
www.kukuiula.com







POPS OF COLOR BRING CLASSIC NEUTRALS TO LIFE.  
SEE OPPOSITE PAGE





\$5,950,000



## RESORT-STYLE RESIDENCE, PARK LANE #6703

Honolulu, Oahu | 1,601 SQFT  
288 SQFT Lanai | 2BR/2.5BA  
MLS# 202303130 | \$5,950,000

This 2-Bedroom+Den residence is reminiscent of an Aman hotel-inspired aesthetic, featuring interior design by acclaimed San Francisco designer David Oldroyd of ODADA, one of the lead designers for the Park Lane common areas. Every detail was curated to match its owner's taste. Built to reflect classical palettes with a modern twist, the interior has been meticulously crafted to create effortless perfection. Upgrades include Big Island Eucalyptus wood paneling, German limestone entry, luxury upholstery on the bedroom walls + window coverings, new luxury lighting, custom closets, new drywall, extra tall doorways & all new designer furnishings.



**HAWAII LIFE**

**Forbes**  
GLOBAL PROPERTIES



Top 1.5% of more than  
1.6 million licensed  
Realtors® nationwide

**RT REALTRENDS**

**Noel Pietsch Shaw**

MBA, Realtor-Associate, RS-75888

808.221.8889

noelshaw@hawaiilife.com

www.NoelShaw.com





A romantic scene of a man and a woman sitting on a wooden swing on a sandy beach. They are seen from behind, looking out at the ocean as the sun sets, creating a warm, golden glow. The woman has long hair and is wearing a light-colored dress, while the man is wearing a t-shirt and shorts. The swing is suspended by thick ropes from a tree branch. In the background, the ocean waves gently lap at the shore, and a few palm fronds are visible in the upper left corner.

LUXURY HOME<sup>®</sup>

M A G A Z I N E

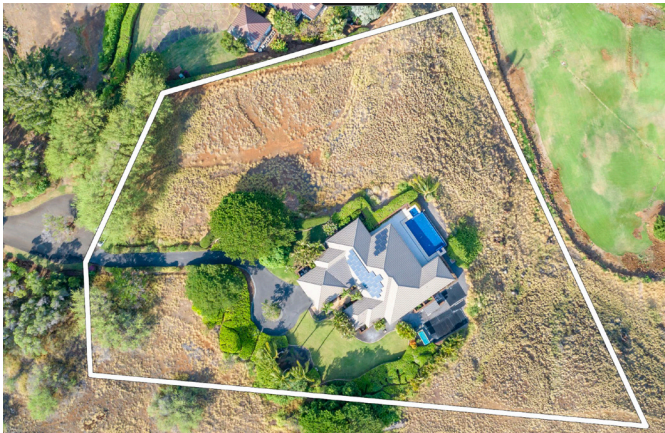
HAWAI'I

Read by those who live aloha.





\$5,349,000



## FAIRWAYS NORTH AT MAUNA KEA RESORT

South Kohala, Big Island  
3,400 SQFT | 4BR/4.5BA  
MLS# 667033 | \$5,349,000

This private residence overlooks the Mauna Kea Resort community with panoramic views of the Pacific Ocean, Maui and the Kohala Mountains. Featuring hardwood Tigerboo, Acacia, Eucalyptus, and Kumaru flooring with Italian Porcelain in the main living area. Expansive covered lanai with Infinity pool & spa, photovoltaic owned NEM system, resort zoned allowing for STVR investment vacation rental use. Homeowners here at Mauna Kea have the option of becoming a Club member offering access to championship golf courses, tennis, beaches, spas, gyms, and two world class hotels. Adjacent Lot 31 available for sale: MLS# 667035 | \$1,900,000

DISTINCTIVE  
COLLECTION  
by  
**Better Homes  
and Gardens**  
REAL ESTATE®  
ISLAND LIFESTYLE

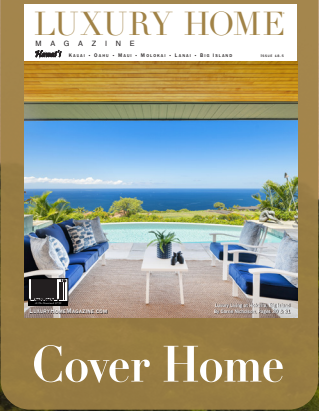


*See your home here next issue!*  
*Contact Renée today.*

**Renée H. Kraft**  
REALTOR® BROKER RB-23004  
Certified Luxury Property Specialist  
Direct: 808.345.2108  
[www.SearchHawaiiProperty.com](http://www.SearchHawaiiProperty.com)  
[Renee@SearchHawaiiProperty.com](mailto:Renee@SearchHawaiiProperty.com)







# LUXURY LIVING AT HOKULI'A RESIDENCE 150

Hokulia, Big Island | 3,771 SQFT | 1.34 AC | 3BR/3.5BA + Office | MLS# 670222 | \$4,900,000

Experience Luxury Living at Hokuli'a Residence 150. This spectacular estate has 3 Bedrooms, 3.5 Baths plus Office with expansive two-car enclosed garage on 1.34 acres of paradise. Gracing a tranquil, cul-de-sac, this remarkable property invites you to a world of unparalleled seclusion, offering awe-inspiring views of the glistening ocean and picturesque coastline. Step through its doors and immerse into the beautiful design, where soaring eleven-foot vaulted ceilings instill a sense of open spaciousness, and an unwavering commitment to craftsmanship.

The Club at Hokuli'a is an exclusive residential club community nestled along the Kona Coastline. Encompassing a 1,260-acre luxury residential community, Hokuli'a is renowned for its one- to two-acre sustainable agricultural lots. The membership enjoys a fitness center, tennis & pickle ball courts, a club pool, and an open-air dining pavilion with a bar, Jack Nicklaus Signature 18-hole golf course, shoreline park and ocean access.



\$4,900,000



**HAWAII LIFE**

**Forbes**  
GLOBAL PROPERTIES

**Carrie Nicholson**  
REALTOR, BIC, HAWAII LIFE ONE, DIRECTOR  
Hawaii Life - Forbes Global Properties  
Direct: 808.896.9749 | IG: @carrierealestate  
Carrie@HawaiiLife.com | Carrie-Nicholson.com



LuxuryHomeMagazine.com



SOLD



PINEAPPLE HILL ESTATES  
KAPALUA, MAUI

Lahaina, Maui | 3,851 SQFT | 0.46 AC  
3BR/3.5BA | MLS# 397856 | \$4,695,000

**SOLD!** Fabulous custom single-level home in Pineapple Hill Phase II. Lots of off street parking and elegant porte cochere for your convenience. Views from the entry to the great room are magnificent. Molokai, Lanai, the Bay Course are captivating. Floor plan is spacious and elegant with a large master wing, with indoor/outdoor shower and office/smaller bedroom, at one end of the home. 3 bedrooms + office, and separate laundry room. Lovely design and use of space. Beautiful views from the kitchen which opens to the pool. The large living/family room has pocket doors opening to the covered lanai pool and spa, for that great indoor/outdoor living. Garage has room for the shop and custom built ins.



**Joanne L. Foxxe**  
RS-63115 | REALTOR® Salesperson  
CRS, GRI, SRES, e-Pro, RSPS  
Keller Williams Realty Maui  
808.385.2918  
jofoxxe@gmail.com  
www.JoanneFoxxe.com  
www.Kapaluaadvisor.com

MY NEXT SALE CAN BE YOURS  
CONTACT ME TODAY





fresh  
START  
♦ ♦ ♦  
Modern New-Builds with Classic Design





Your style—whether the clothing you wear, the car you drive, or the artwork you collect—is a reflection of you. And your house is no different. In some regions of the country, architectural style is singular. But in Hawaii, you'll find traditional single-family homes, sprawling ranches, kama'aina and plantation styles, modern construction, or a blend of historical design with current sensibilities.

Those blends, like the one featured here, are identifiable by sleek, clean lines, minimalist elements, and traditional details. The principle of modern design is that form follows function. So instead of ornate details like those on a Victorian painted lady, you'll find neutral colors, basic shapes, and streamlined details. Modern home *decor* follows suit with neutral or muted colors, linear patterns, and understated textures.

Put your own spin on modern style with a story in your next home, today. ♦

#### About This Featured Home:

Inspired by Hawaii's Mission-style era, this Kauai home blends elegant design with cutting-edge technology.

- ♦ Gaggenau fridge/freezer
- ♦ Wolf gas range/oven
- ♦ Zephyr under-counter fridge/wine cooler
- ♦ Brizo faucets/shower systems
- ♦ Caesarstone countertops
- ♦ European white oak floors throughout
- ♦ Rift sawn oak kitchen and living cabinets/drawers
- ♦ Furniture by Restoration Hardware: sofa, bar stools, dining table/chairs, outdoor teak furniture
- ♦ Ipe exterior decking

See more of this Exquisite Mission-Style Home presented by Jeff Skinner and Suzanne M. Harding on pages 24 & 25.









\$3,588,000



1555 KAPIOLANI  
BOULEVARD PH 2100

Honolulu, Oahu | 2,677 SQFT  
3BR/3BA | MLS# 202317061 | \$3,588,000

This luxurious Penthouse offers breathtaking ocean and mountain views from an expansive, open floor plan with 10-ft high ceilings. With more than 2,650 square feet of living space, this three bed, three bath home features upgrades including his/hers walk-in closets, a large wine chiller, convection and steam ovens, and laundry room with a separate service entrance. Enjoy the resort-like amenities that ONE Ala Moana has to offer including theater room, gym, infinity-pool and hot tubs, several barbecue areas and more. ONE Ala Moana is conveniently located above Ala Moana Shopping Center and near restaurants, entertainment, and Ala Moana Beach Park.



Esther Park Kusunoki  
REALTOR®, Senior Vice President  
ABR CHMS CRS GRI SRS, RB-21002  
808.489.6733  
esther@eparkrealtor.com  
한국어 서비스 가능



List

Sotheby's  
INTERNATIONAL REALTY





\$3,500,000



## COMING SOON: 2578 PACIFIC HEIGHTS RD #J/K

Honolulu, Oahu | 3,502 SQFT  
6BR/4Full/2Half BA  
MLS# 202320299 | \$3,500,000

Newly re-constructed family compound on a Pacific Heights rim lot, comprising 2 single family homes! Unit K is completely renovated and restored. Unit J has been renovated but still under construction with interior finishes remaining. Ocean & Diamond Head views, wrap around decking, and parking for up to 6 vehicles. Landscaped with lush foliage, including dragon fruit, mango, and plumeria trees, offset by lava rock arches and walls. Property is undergoing a CPR process to create 2 TMKs possibly enabling homes to be purchased separately (anticipated in 4-5 months). Each home has fire sprinklers installed. Shown by Appointment only. Showing availability may be limited as Unit J is still under construction.



**Christie Busto**  
REALTOR®-ASSOCIATE  
RS-85364  
808.469.6414  
Christie.Busto@gmail.com  
JustHomesHawaii.com | RB-23191

  
**Just  
Homes**  
Honolulu and beyond



**Jennifer Lee Busto**  
Ph.D., REALTOR®, M.S. Law  
Principal Broker  
RB-20651  
808.864.2504  
Jennifer@JenniferBusto.com





\$3,495,000



MAUNA‘OLU  
PLANTATION

Makawao, Maui | 4,214 SQFT  
87,556 SQFT Land | 8BR/6BA  
MLS# 399078 | \$3,495,000

This exceptional Upcountry property is located in the gated Mauna‘olu Plantation between Paia and Makawao. The expansive residence offers a luxurious living experience. The main home features two lavish primary suites with stunning ocean and mountain views. The lower level includes three separate large garages for parking or storage. Additionally, there is a stylish ohana with its own detached garage and courtyard (1,008 SQFT | 3BR/2BA | 230 SQFT Lanai). The property is conveniently located near schools, dining, shopping, and the beautiful beaches of the North Shore. With a harmonious blend of tranquility and elegance, this property is perfect for discerning buyers seeking a refined lifestyle.



Josh Jerman  
REALTOR(B), RB-19728  
808.283.2222 | Josh@HawaiiLife.com



HAWAI'I LIFE

Forbes  
GLOBAL PROPERTIES





\$3,450,000



# 2969 KALAKAUA AVE #1005

Honolulu, Oahu | 1,979 SQFT | 3BR/3BA  
MLS# 202306277 | \$3,450,000

Experience coastal living at its finest! THIS VIEW HAS IT ALL! Breathtaking panoramic ocean, coastline, sunset, city, Kapiolani Park and Diamond Head views await you from this 3 bdrm/3 bath/2 pkg oceanfront condo in highly desirable Diamond Head Apts on the Gold Coast of Oahu. Nestled at the base of iconic Diamond Head, this unit features fresh updates and expansive living room surrounded by windows for stunning views with maximum natural light. Enjoy direct ocean access from the building or relax in the property’s heated saltwater pool. Ideal location just steps from Kapiolani Park, the world famous beaches of Waikiki, shopping, restaurants and entertainment. Sale is subject to co-op board approval.



**Sherrie Sasaki**  
Director of Team Operations, Realtor Associate  
RS-74829  
808.255.7739  
SherrieS@BetterHawaii.com

DISTINCTIVE  
COLLECTION  
by  
**Better  
Homes  
and Gardens**  
REAL ESTATE  
ADVANTAGE  
REALTY

Better Homes and Gardens Real Estate Advantage Realty | \*Advantage Realty, LLC

**Myron and Ambur Kiriu**  
CEO, Owner, Realtor | Owner, VP Public Relations  
RB-17242 | RB-20499\*  
808.864.9000  
MyronK@BetterHawaii.com  
MyronKiriu.com











\$2,685,000



# 321 AINAHOU STREET UNIT #4

Honolulu, Oahu | 1,991 SQFT  
4,437 SQFT Land | 4BR/3BA  
MLS# 202320763 | \$2,685,000

Discover your dream coastal retreat in the heart of Hawaii Kai Marina! This property offers a rare marina-front opportunity in a gated community. Wake up to breathtaking views over tranquil waters, step onto your boat for adventures from your own backyard, and end the day with a spectacular sunset. This haven boasts a 40 FT dock attached to a 535 SQFT marina deck. The two-story home has been meticulously remodeled with over \$400k in elegant & functional upgrades. Natural light floods the space, thanks to high ceilings & open floor plan, creating a modern and sophisticated ambiance. The spacious dining, living, and master suite offer unobstructed views of the marina.

  
JACK TYRRELL  
& COMPANY



A Real Estate Brokerage Corporation

**Luz Valeria Fukunaga**  
MBA, Realtor Associate, RS-85572  
C: 808.436.6765  
E: Luz@jtchawaii.com  
www.JTCHawaii.com



LuxuryHomeMagazine.com



\$2,495,000



CHAMPION RIDGE AT  
MAUNA LANI RESORT

Mauna Lani Resort, Big Island  
22,438 SQFT Land | MLS# 703999 | \$2,495,000

An exceptional opportunity awaits at the Mauna Lani Resort, nestled on Hawaii’s stunning Big Island. A once-in-a-lifetime chance to secure over half an acre ocean and golf-view building parcel amidst the sought-after backdrop of Hawaii’s elite residential precincts. Champion Ridge is on the Kohala Coast, known for its sunny weather, beautiful beaches, world-class resorts, and black lava fields contrasting the blue Pacific Ocean. Residents have access to the Mauna Lani Beach Club, with beautiful sandy beach, dining options & water activities. The Big Island is known for its diverse landscapes, from volcanic terrains to lush rainforests and pristine beaches.



Eileen Lacerte  
REALTOR® Broker/Owner  
808.989.1862  
eileen@betterislandlifestyle.com  
youtube.com/EileenLaCerte

NEXT ISSUE:  
SEE YOUR  
HOME HERE!



<http://www.youtube.com/c/EileenLaCerte>







\$1,780,480



## 76-6304 KOLOLIA STREET

Kailua-Kona, Big Island | 2,097 SQFT  
10,299 SQFT Land | 4BR/2.5BA  
MLS# 702927 | \$1,780,480

This home has it all! Come see this air-conditioned, single-level, single-family home with salt-water pool, hot tub, outdoor shower, 2-car garage, and owned solar. Close proximity to Kailua Kona beaches and shopping. The highlight of this property is the outdoor area. The inviting pool and hot tub provide a refreshing oasis where you can relax and unwind while taking in the views of the Ocean, allowing you to enjoy mesmerizing sunsets from the comfort of your own lanai. The outdoor shower offers a convenient way to rinse off after a dip in the pool or a day at the beach. Tropical paradise with fruit trees. Ideal for peaceful living or entertaining. Experience tranquil living here.



ISLAND  
LIFESTYLE

HOME STAGING  
expert®



KŪPONO  
WEST HAWAII REALTOR® AWARDS



ALOHA

Angel Wannemacher

REALTOR® Broker

808.756.4344

Angel@BetterIslandLifestyle.com

JAWSHawaiiRE.com





SOLD



4761 Farmers Road - SOLD

205 LOKO PLACE

Wahiawa, Oahu | 645 SQFT  
6,220 SQFT Land | 2BR/1BA  
MLS# 202320425 | \$799,000

Charming 2bd, 1ba home nestled on a peaceful corner lot on Loko Place in Wahiawa Town. This home offers plenty of room to expand and customize to your heart's desire. Create additional living spaces and those with a green thumb, the ample outdoor space provides the opportunity to plant your favorite fruit trees and create a flourishing garden. Imagine harvesting fresh fruits and vegetables right from your own backyard. Schedule your viewing today and experience the potential that this property has to offer.

- 205 Loko Place - For Sale
- 4761 Farmers Road - SOLD
- 92-1037 Koio Dr #M1-3 - SOLD



92-1037 Koio Dr #M1-3 - SOLD



205 Loko Place - For Sale



**Anna Achauer**  
President, PB, CRB, CRS, CIPS  
CENTURION AWARD WINNER | TOP PRODUCER  
Anna International Realty  
Email: AnnaRealtyUSA@hotmail.com  
Mobile: 808.386.7556  
China: +86 137 010 88883 | 歡迎中文垂詢  
www.Anna-Hawaii.com





# Just Sold BY MARTI & ASHLEY



\$3,200,000 - Represented Seller

4305 Kaikoo Place | 4 BR, 3 BA | MLS 202225954

Property in Kahala near Diamond Head directly across from beach access



\$4,000,000 - Represented Buyer

126 Polihale Place | 4 BR, 4 BA | MLS 202308642

Luxury home in Triangle Portlock with expansive ocean and mountain views

With a profound love for these islands, Marti and Ashley blend local expertise with a global vision to provide unparalleled service to our esteemed clientele. We are committed to making your real estate journey in Hawaii a seamless, enjoyable, and rewarding experience. From finding the perfect property to negotiating the best deals and providing expert guidance through the closing process, we are with you every step of the way. If you're considering buying or selling a property, let us be your trusted partners. We look forward to working with you.

**MARTI HAZZARD & ASHLEY CLAGSTONE**  
**LUXURY PROPERTY SPECIALISTS**

[martih@cbrealty.com](mailto:martih@cbrealty.com) | 808-478-1200 | RS-62782  
[ashley.clagstone@cbrealty.com](mailto:ashley.clagstone@cbrealty.com) | 808-518-8918 | RS-80577  
4211 Waialae Ave Suite 9000, Honolulu, HI 96813  
[www.martihazard.com](http://www.martihazard.com) | [www.oahumetro.com](http://www.oahumetro.com)



**COLDWELL  
BANKER  
REALTY**





# Ready to Build Your Luxury DREAM HOME?



**AVAILABLE  
LOTS**

**SOLD LOTS**



## Last Eight Luxury Building Lots and a Custom Home Opportunity!

Nohea offers new lot owners a unique opportunity to build their dream home within the award winning, Mauna Lani Resort. Right sized home sites offer owners views to golf fairways and the majestic Mauna Kea—all cooled by pacific breezes and lulled by sounds of the ocean not far away. Uniquely positioned within the heart of the Resort, Nohea Real Estate is walking distance to the Mauna Lani Racquet Club and Spa, Auberge Resorts Collection at Mauna Lani Bay Hotel and The Shops at Mauna Lani.

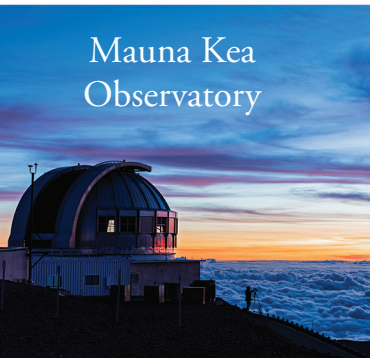
*Contact Rick for Details About Availability*

**Rick Oliver, RB-18823**  
**808-960-7330**

**Nohea**  
AT MAUNA LANI

**[www.NoheaAtMaunaLani.com](http://www.NoheaAtMaunaLani.com)**  
**[info@noheaatmaunalani.com](mailto:info@noheaatmaunalani.com)**

Mauna Kea  
Observatory



Hāpuna  
Beach



Francis I'l Brown  
Golf Course



Nohea Amenity  
Center



Shops at  
Mauna Lani



Coldwell Banker Island Properties RB-16822  
67-1185 Mamalahoa Hwy, Ste E128, Kamuela, HI 96743



**COLDWELL BANKER**

808-887-0887

**ISLAND  
PROPERTIES**





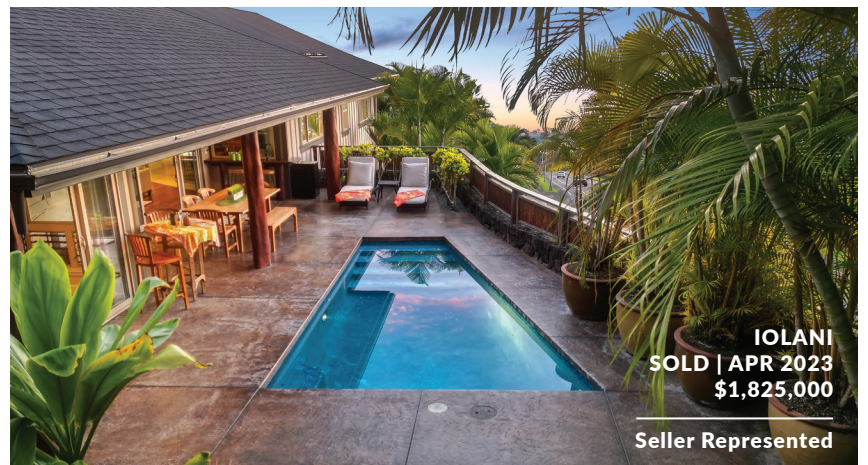
MAUNA LANI  
SOLD | FEB 2023  
\$8,200,000

Buyer Represented



KOHANAIIKI  
SOLD | FEB 2023  
\$5,100,000

Seller Represented



IOLANI  
SOLD | APR 2023  
\$1,825,000

Seller Represented

Penn Henderson  
REAL ESTATE

HAWAII REALTOR® ↔ BIG ISLAND EXPERT

"Recognized as the agent of choice for the most discerning affluent buyers and sellers"

- Institute of Luxury Home Marketing -



Penn Henderson, RS-83962  
NextHome Paradise Realty  
www.hawaii realestatehub.com

808.345.6214 (m) / penn@pennhenderson.com







*A rare and remarkable one-of-a-kind offering.*

THE DOUBLE HOMESITE WITH ONE-OF-A-KIND HOUSE PLANS, \$3.95M  
SEVEN BEDROOMS / EIGHT FULL BATHS & THREE HALF BATHS



For Hapuna Estates, obtain the Developer's Public Report for a Condominium required by Hawaii law and read it before signing a binding sales contract. No federal or state agency has judged the merits or value, if any, of these properties. This does not constitute an offer to sell or a solicitation of any offer to buy where prohibited by law.





## AT THE BELOVED MAUNA KEA RESORT

Considered the most sacred of the island's five volcanoes, Mauna Kea's summit is the highest in all Hawaii. Quite naturally, ancient Hawaiian law reserved visits to the peak for only the highest-ranking nobles.

In keeping with this tradition, the most spectacular property at the resort is at the highest elevation, on the golf course, with expansive ocean views. Express your interest in this double homesite, which is offered with visionary architectural plans.



# Hapuna Estates

AT MAUNA KEA RESORT

808.557.8689

[Info@MaunaKeaLiving.com](mailto:Info@MaunaKeaLiving.com)

[MaunaKeaLiving.com](http://MaunaKeaLiving.com)



\$4,650,000



AMAUI VILLAS AT  
MAUNA KEA RESORT

Kamuela, Big Island | 4BR/4.5BA  
MLS# 667476 | \$4,650,000

The Amaui Villas enjoy one of the most prominent and desirable sites within the prestigious Hapuna Estates. This begins with incomparable views across the Hapuna Golf Course to all of the Kohala Coast, all the way to Maui on the horizon. Sited at the top of the Mauna Kea Resorts, the Amaui Villas offer a very private lifestyle. Along with fitness and a swimming pool is a fantastic waterslide certain to be enjoyed by kids of all ages. The clubhouse is steps from each villa, and access is included with ownership. Homeowners can also enjoy the resort amenities such as beach and pool services, fitness, golf, tennis and dining through membership in the Club at Mauna Kea Resort. The first phase will be completed in winter 2023! Now taking phase 2 contracts.



**Tomoko Matsumoto**  
REALTOR® Principal Broker, Owner  
Hapuna Realty  
68-1330 Mauna Lani Drive, Suite 104 Kohala Coast, HI 96743  
www.HapunaRealty.com | Tomo@HapunaRealty.com  
808.557.8689







## HAPUNA BEACH RESIDENCES AT MAUNA KEA RESORT

**Kamuela, Big Island**  
**1,647 SQFT | 2BR/2.5BA**  
**MLS# 704036 | \$5,995,000**

Deluxe furnished beachfront penthouse condo unit on Hapuna Beach with AMAZING ocean views! Nothing like falling asleep and waking up to the sound of the ocean and being able to walk to one of the best white sand beaches! Bonus room can be used as a 3rd bedroom. Features include white sand beach, ocean & whale watching in winter, radius pocket doors, luxury kitchen with dining area, Sub-Zero refrigerator and wine refrigerator, Wolf induction cooktop, Miele dishwasher, quartz countertops, Asko washer & dryer, Toto toilets w/ sensor, Dornbracht shower and hardware, built-in closets, European Oak engineered flooring, coral stone accent wall, LED lighting, Nest AC control, motorized shades & blackout and more...



**Tomoko Matsumoto**  
 REALTOR® Principal Broker, Owner

Hapuna Realty  
 68-1330 Mauna Lani Drive, Suite 104 Kohala Coast, HI 96743  
[www.HapunaRealty.com](http://www.HapunaRealty.com) | [Tomo@HapunaRealty.com](mailto:Tomo@HapunaRealty.com)  
 808.557.8689







Maui, our hearts are with you.



Luxury Home Magazine®

HAWAII

Issue 18.5