

# LUXURY HOME<sup>®</sup>

M A G A Z I N E

*Hawai'i* KAUAI • OAHU • MAUI • MOLOKAI • LANAI • BIG ISLAND

ISSUE 20.1



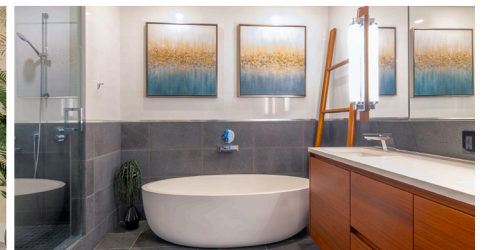
At The Newsstand: \$7.99

LUXURYHOMEMAGAZINE.COM



Presenting the Legacy Hale Hanohano, Kahala, Oahu  
By Derek Kamm & Noel Pietsch Shaw, Pages 10-11





#2000 **\$3,600,000**

- 3 BD, 3.5 BA, Living - 2,492 sf
- Views - Diamond Head, Coastline, Ocean, Mountain, City & Sunset

Discover unparalleled luxury in this 3BD, 3.5BA residence spanning 2,450 sq. ft. Impeccably maintained with over \$250K in thoughtful upgrades and breathtaking ocean views. The living room features a striking feature wall, perfect for showcasing family memories, while floor-to-ceiling windows flood the space with natural light. Custom floating shelves with adjustable lighting further enhance the warm and inviting atmosphere, making it perfect for any occasion. Upgrades include electric window shades, Toto washlets, and wood flooring throughout. The kitchen is a masterpiece, complete with Miele appliances such as a full-size wine cooler, steam oven, dish warmer, refrigerator, and dishwasher. Built-in pantry shelving enhances both style and functionality. The laundry room offers built-in shelving and a dedicated shoe rack, while the powder room is designed with elegance and comfort. Bedrooms are thoughtfully appointed with custom closet systems, with the 2nd bedroom featuring a Murphy bed and built-in cabinetry, ideal as a guest suite or office. Optional storage room valued at \$150K and two excellent parking stalls (4-A1, 4-A2). This residence is a sanctuary of elevated living.



**John "Jack" Tyrrell**  
President  
Principal Broker, CRS, CRB  
CPA (not in public practice)  
Lic. # RB-19880  
E: Jack@jtchawaii.com  
C: 808.306.6933



**May Lew Tyrrell 廖富漢**  
Executive Vice President  
Broker-In-Charge, MBA, GRI, CRS, CRB, CIPS  
Lic. # RB-22693  
WeChat: Mayinhawaii (普通话)  
E: May@jtchawaii.com  
C: 808.223.3364





# WAIHONUA ALA MOANA

PENTHOUSE #4203 **\$2,750,000**

- 3 BD, 2 BA, Living - 1,935 sf. Lanai - 67 sf.
- Views - Mountains, Coastline & Ocean



# VICTORIA PLACE WARD VILLAGE

#803 **\$2,300,000**

- 2 BD, 2 BA, Living - 1,107 sf.
- Views - City, Coastline, Garden, Marina, Ocean & Sunset



**WARD  
VILLAGE**  
Top Producing Agent by  
Units & Dollar Volume  
2014

**WARD  
VILLAGE**  
Top Producing Agent by  
Units & Dollar Volume  
2015

For More Information:  
808 532 3330  
[www.jtchawaii.com](http://www.jtchawaii.com)



Jack Tyrrell & Company



@jtchawaii



@jtchawaii



**JACK TYRRELL  
& COMPANY**

A Real Estate Brokerage Corporation

\* The information presented herein is provided as is, without warranty expressed or implied of any kind. Information herein deemed reliable but not guaranteed.



SOLD!



987 Hunakai Street



4151 Nuuanu Pali Drive



4140 Black Point Road



2029 Kuola Street

JUST SOLD PROPERTIES

- 987 Hunakai Street | Sold at \$4,700,000 FS
- 4151 Nuuanu Pali Drive | Sold at \$3,800,000 FS
- 4140 Black Point Road | Sold at \$3,398,000 FS
- 2029 Kuola Street | Sold at \$2,950,000 FS

WE DON'T JUST LIST HOMES. WE SELL THEM. THAT'S WHY WE'RE NUMBER ONE IN HAWAII.

The homes you see above aren't just sold listings, to our clients they represent the results of dedication and hard work. With 35 years in real estate, my philosophy is simple: 'Don't stop until the job is done.' This is why we continue to break sales records and achieve recognition as #1 in Hawaii. If you're considering selling, purchasing, or have questions about the market, contact me. I look forward to helping you realize your real estate goals and getting the job done for you!



COLDWELL BANKER  
REALTY



Tracy Allen  
HAWAII  
LOCAL EXPERTISE | GLOBAL REACH



\$4,895,000



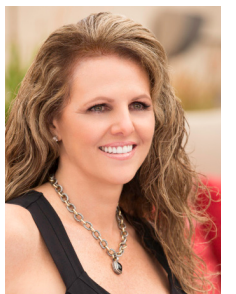
## 4346 KAHALA AVENUE

Honolulu, Oahu | 5,304 SQFT  
13,500 SQFT Land | 5BR/4.5BA  
MLS# 202418533 | \$4,895,000

**Location, Convenience, Lifestyle.** This grand, resort-style entertainer's sanctuary is situated on a spacious parcel on coveted Kahala Avenue. The expansive 5-bedroom home features an indoor-outdoor floor plan w/ main living areas boasting soaring ceilings & dramatic, light-filled windows. Widespread glass doors seamlessly open to an outdoor lanai w/ multiple lounge areas for entertaining. The Primary Suite, located on the ground level offers serene views of the pool. 3 addtl bedrooms & a generous study/office space are located on the upper level. This custom residence is ideally located to nearby beaches, parks, farmers market, golfing, restaurants, shopping & more!

**Tracy Allen**

Vice President, REALTOR®, RS-46610  
Global Luxury Ambassador  
Luxury Property Specialist  
808.927.6415  
Tracy@TracyAllenHawaii.com  
www.TracyAllenHawaii.com  
#1 Agent in Hawaii





# CUSTOM METAL SCULPTURE WITH TROPICAL DESIGNS



808 879 0938



PLEASE VISIT OUR GALLERY  
[padilladesigns.com](http://padilladesigns.com)

PHOTOGRAPHY BY: J. ANTHONY MARTINEZ



SERVING ALL HAWAIIAN ISLANDS & BEYOND





\$3,595,000



## KA'ANAPALI ALI'I #3-704

Ka'anapali, Maui | 1,643 SQFT  
2BR/2BA | MLS# 404649 | \$3,595,000

Enjoy the fun and excitement of the Ka'anapali Beach Resort while owning this beautiful residence in the luxurious Ka'anapali Ali'i Condominiums. Now available for your personal ownership, unit 3-704 at the Ka'anapali Ali'i has a highly sought-after floor plan featuring an ocean view, 2 bedroom/2 bath residence with den. In this particular floor plan, the den offers an additional space for your living comfort. Located on the 7th floor in building three, this spacious residence has been remodeled, is tastefully furnished and ready for your absolute enjoyment.



### Leah Harbottle

Realtor®-Broker, Lic. #22910  
Cell: 808.446.4551  
Toll Free: 866.661.7887  
Fax: 808.661.8358  
Leah-Whalers@KW.com  
www.KaanapaliLuxuryLiving.com

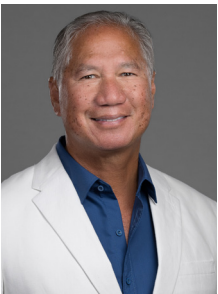


### Gregory Harbottle Inc. R (PB)

Luxury Property Specialist, Lic. #19615

Cell: 808.385.8059  
ghthkh@msn.com

www.KaanapaliLuxuryLiving.com





I N D E X Homes are arranged in order of price, descending.

THE ISLAND OF MAUI

Price	Agent	Page
\$14M	Mary Anne Fitch, Nam L. Le Viet	16
\$13.5M	Diane K Pool	18
\$12.95M	Mary Anne Fitch, Caleb Findlay	19
\$8.95M	David W. Richardson, Stefanie Hegrenes	26
\$8.495M	David W. Richardson	31
\$7.85M	Buz Moffett, Kelly Robinson	33
\$7.4M	Cari Tilley, Elise Valceschini	35
\$6.25M	Josh Jerman	42
\$5.7M	Robert R. Myers	43
\$3.975M	Karin S. Carlson	52
\$3.595M	Gregory Harbottle, Leah Harbottle	7
\$2.97M	Diana Rodbourn	58-59
Various	Robert H. "Robbie" Dein, Kenneth M. "Ken" Hayo	63

THE BIG ISLAND

\$34M	Eileen Lacerte	12
\$28M	Tomoko Matsumoto	71
\$14.9M	Yvonne J. Khouri-Morgan	15
\$12M	Tomoko Matsumoto	70
\$8.294M	Sean F. Ginella	32
\$6.9M	Charlene Nishida, Lance Owens	36
\$6.875M	Margery Mayo	37
\$3.85M	Renée H. Kraft	53
Various	Hokuli'a	56
Various	Hapuna Estates	68-69

THE ISLAND OF LANAI

Various	Sherri Williams	64
---------	-----------------	----

THE ISLAND OF OAHU

Price	Agent	Page
\$65M	Derek Kamm, Noel Pietsch Shaw	Front Cover, 10-11
\$18.8M	Erik Hinshaw, Noel Pietsch Shaw	13
\$17.995M	Olivia Sadeler	14
\$13.8M	Noel Pietsch Shaw, Erik Hinshaw	17
\$12.9M	Noel Pietsch Shaw	20
\$11.898M	Drew Read	21
\$10.9M	Noel Pietsch Shaw	22
\$9.738M	Noel Pietsch Shaw	23
\$6.48M	Vince Vanderstroom	41
\$5.6M	Sherine Duncan, Joel Cavasso	45
\$4.995M	Ralph Gray	46
\$4.9M	Sean F. Ginella, Lex Ferguson	47
\$4.895M	Tracy Allen	5
\$4.5M	Christine MyHanh Bondroff	50
\$3.988M	Dolores & Amanda Panlilio Bediones	51
\$3.6M	John "Jack" Tyrrell, May Lew Tyrrell	2
\$3.5M	Sachi Braden, Atsuko Ajed	54
\$3.45M	Sean F. Ginella, Lex Ferguson	55
\$2.899M	Esther Park Kusunoki	60
\$2.298M	Drew Read	61
\$1.999M	Sandie Choe-Yamasato, Mia Lin	62
Various	John "Jack" Tyrrell, May Lew Tyrrell	3
Sold	Tracy Allen	4

THE ISLAND OF KAUAI

\$9.4M	Neal Norman	24
\$9.35M	Hannah Sirois	25
\$8.75M	Hannah Sirois	27
\$8.65M	Neal Norman	30
\$7.65M	Neal Norman	34
\$6.5M	Suzanne M. Harding, Jeff Skinner	38
\$6.5M	Suzanne M. Harding, Jeff Skinner	39
\$3.3M	Neal Norman	57
Various	Suzanne M. Harding, Jeff Skinner Heather Carver	Back Cover

BUSINESS PARTNERS

Aloha Insurance	65
Padilla Designs, LLC	6
Indich	40

ahuihou>



ISSUE	DEADLINE	CIRCULATION
20.2	03/10/25	04/22 – 06/12
20.3	05/05/25	06/13 – 08/14
20.4	07/07/25	08/15 – 10/18
20.5	09/08/25	10/19 – 12/16
20.6	11/05/25	12/17 – 01/21



Front Cover Home

The Legacy Hale Hanohano, Kahala, Oahu  
See Pages 10 & 11  
Photo by Ryan Siphers

LUXURY HOME MAGAZINE®  
PACIFIC LUXURY LIVING™

501 Fourth Street, #854  
Lake Oswego, OR 97034

Phone: 808.499.5491

FOR ADVERTISING INFORMATION VISIT:

[luxuryhomemagazine.com](http://luxuryhomemagazine.com)

[info@lhmmhi.com](mailto:info@lhmmhi.com)

*The most comprehensive and targeted  
distribution in the area, bar none!*

LHM Media Group

Phone: 916.458.6010  
[info@lhmmmediagroup.com](mailto:info@lhmmmediagroup.com)  
[LuxuryHomeMagazine.com](http://LuxuryHomeMagazine.com)

Visit Our Blog:  
[LuxuryHomeMagazine.com/blog](http://LuxuryHomeMagazine.com/blog)

Chief Executive Officer  
Solar Hing

Chief Operations Officer  
Jessica Hing

Publishing Opportunities  
[publishing@lhmmmediagroup.com](mailto:publishing@lhmmmediagroup.com)

Published six times per year

©2025 LHM Media Group



Made & Printed in the USA.

Luxury Home Magazine® and [LuxuryHomeMagazine.com](http://LuxuryHomeMagazine.com) are protected trademarks of LHM Media Group. Publisher is an authorized Independent Distributor and Licensee for a market specific area of Luxury Home Magazine® and [LuxuryHomeMagazine.com](http://LuxuryHomeMagazine.com). Publisher is licensed through LHM Media Group. LHM Media Group is not responsible for the contents of the magazine or the acts or omissions of the publisher or its representatives and makes no representations or guarantees. Reproduction in whole or in part (including materials, photos and formats) in any form without written permission from LHM Media Group is prohibited. All submissions become the property of LHM Media Group and may be used in any print, digital, social and online media. All rights reserved.

The information contained in *Luxury Home Magazine®* is deemed reliable, but not guaranteed. Contact each individual agent to verify information, which is subject to change.



# Aloha from Maresa

Say Aloha! Send editorial & advertising inquiries to [info@lhmhi.com](mailto:info@lhmhi.com)



I've never been a five-year-plan type of gal; I live one editorial calendar at a time. So, when I first met our publishers, Torey and Danyelle Lam, in 2008, I didn't have any visions for the future one way or another. We found our publishing groove, and I'm pleased to be here today celebrating the magazine's incredible 20 Year Anniversary Issue!

Join the celebration by turning to pages 28 & 29 for a timeline of every front cover printed! And see what some of our longtime members have to say of their time with LHM on pages 48 & 49.

We are reaching this milestone because of you—your participation, your trust in us, your readership, or your incredible presence in the luxury market. Cheers to 20 Years, and we look forward to celebrating all your successes today, tomorrow, and beyond.

Mahalo,

*Maresa Giovannini*

Maresa Giovannini  
Editor in Chief



## FROM THE PUBLISHER.

"I've seen them come, and I've seen them go" were the words a top Realtor said to me 20 years ago when I told him we were launching *Luxury Home Magazine* Hawaii and asked if he would like to advertise his beautiful listing in our inaugural edition. He had seen many publications come to the Hawaii market only to leave quickly. These words haunted and motivated me to prove we were here to stay in the Hawaiian market and would be best in class.

More than 100 editions later, *Luxury Home Magazine* Hawaii is the top publication to feature the finest homes in Hawaii. Our readership continues to grow and gain market share with distribution locations that many other publications only dream of. Some of our partner Realtors have been with us in EVERY issue since our first year of launching on their island. Not only have we been marketing luxury homes in a way they deserve, but we have also helped many Realtors take their brand identity to the next level. We've been a part of the community here in Hawaii in real action, from trade organization shows to charity fundraisers.

Just like relationships are important between Realtors and their clients, so is the relationship between us and our advertisers. We have a vested interest in their success and vice versa. It is with great honor and humility that we sincerely say "Mahalo Kakoa" to every Realtor, Advertiser, and Reader who has been with us over the years. I want to reaffirm to our Realty community that we are just getting started and stand ready to serve you for many years to come.

With Warmest Aloha,

*Torey Lam*

Torey Lam  
Publisher, *Luxury Home Magazine* Hawaii





\$65,000,000







# PRESTIGIOUS OCEANFRONT ESTATE

Kahala, O'ahu | 11,870 SQFT | 66,296 SQFT Land | 6BR/6Full/2Half BA | MLS# 202427799 | \$65,000,000

Hale Hanohano, the “House of Honor,” lives up to its name as a landmark legacy estate on O'ahu's most exclusive coastline. As one of the largest and most distinguished properties on Kahala Avenue, this estate defines refined oceanfront living. Spanning 1.52 acres with 213 feet of pristine beachfront across three combined lots, Hale Hanohano features 11,870 square feet of luxurious interiors designed for both privacy and connection. Three distinct residences—the Main

House, House Two, and House Three—strike the perfect balance between private retreats and shared spaces, making it ideal for multi-generational living and entertaining. Built in 2018, this extraordinary estate boasts a grand landscaped entry, a 25M lap pool with spa, and rolling lawns that meet the ocean. With its unrivaled location, significant scale, and exquisite craftsmanship, Hale Hanohano stands as an enduring legacy on Honolulu's most coveted shoreline.



**Derek Kamm**  
Coldwell Banker Island Properties  
Realtor Broker  
(808) 800-7308  
kammmtm@islandproperties.com



**Noel Pietsch Shaw**  
Hawai'i Life  
Realtor Salesperson, HL1 O'ahu  
(808) 221-8889  
noelshaw@hawaiilife.com





\$34,000,000



## MAUNA KEA RESORT

Kohala Coast, Big Island | 6,301 SQFT  
6BR/6.5BA | MLS# 716779 | \$34,000,000

Perched on 1.62 acres in The Bluffs at Mauna Kea Resort, this 6,300-square-foot estate offers stunning ocean views. Featuring six bedrooms, six and a half baths, and over 2,000 square feet of lanais, it blends Balinese, Chinese, and Hawaiian design. Recognized by Architectural Digest, the property highlights indoor-outdoor living with custom outdoor showers, koi ponds, and a serene infinity-edge pool. Resort amenities include two luxury hotels, championship golf, and oceanfront tennis, making this a premier destination for refined island living.



**Eileen Lacerte**  
REALTOR® Broker/Owner  
808.989.1862  
eileen@betterislandlifestyle.com  
youtube.com/EileenLaCerte





\$18,800,000



## ELEVATED LIVING IN HAWAII LOA RIDGE

Honolulu, Oahu | 8,795 SQFT  
22,388 SQFT Land | 5BR/6.5BA  
MLS# 202501454 | \$18,800,000

Perched on a prime hillside, Kaimana Hila offers views of Diamond Head, the Pacific Ocean, and Oahu's coastline and mountains from nearly every room. Designed by award-winning architect Jeff Long, this residence combines steel-and-concrete construction with high-fashion interiors. Exquisite details like Spinneybeck leather walls, custom Italian closets by Molteni & C Dada, and vein-matched travertine marble bathrooms showcase luxury at every turn. A Pininfarina-designed kitchen with Snaidero cabinetry and Gaggenau appliances elevates daily living and entertaining. Outside, an expansive lanai with a saltwater infinity pool and hot tub, framed by lush landscaping and breathtaking views, creates a resort-style sanctuary. Security system and the exclusivity of Honolulu's premier gated community, Hawaii Loa Ridge, make this a lock-and-go residence.



### Noel Pietsch Shaw

MBA, Realtor-Associate, RS-75888  
808.221.8889  
noelshaw@hawaiiilife.com  
www.NoelShaw.com



HAWAII LIFE

Forbes  
GLOBAL PROPERTIES

### Erik Hinshaw

Real Estate Broker, RB-21068  
Hawaii'i Life Real Estate Brokers  
808.800.6278  
erik@hawaiiilife.com  
www.hawaiiilife.com/erikhinshaw





\$17,995,000



766 MOKULUA DRIVE

Kailua, Oahu | 7,761 SQFT  
14,497 SQFT Land  
6BR/5Full/2Half BA  
MLS# 202408067 | \$17,995,000

Completed in 2018 by award-winning firm, Longhouse Design+Build, this residence harmoniously blends clean contemporary lines with a seamless design for an effortless flow. Boasting 100 linear feet of expansive oceanfront lawn, it makes for a spectacular primary residence or a second home retreat. From its vantage point between Kailua and Lanikai, one can marvel at the breathtaking sparkling turquoise waters, stunning sunrises, and moonrises and observe the curiosity of sea turtles, or adventurous paddlers and kite surfers against a picturesque backdrop of Popoia Island & The Mokulua Islands.



**Olivia Sadeler**  
Realtor Salesperson | RS-78233  
Founding Agent on Oahu | Compass  
Alesia Barnes Team  
olivia.sadeler@compass.com  
808.542.7857



**ALESIA  
BARNES  
TEAM**

**COMPASS**





IN ESCROW!  
72-148 LIPOA PLACE

Kailua-Kona, Big Island | 5,342 SQFT  
20,524 SQFT Land | 5BR/5Full/2Half BA  
MLS# 713774 | \$14,900,000

Introducing an exquisite, custom-furnished residence within the prestigious Hualalai Resort. This luxurious home seamlessly blends sophistication with comfort. The residence has been extensively renovated, ideal for both intimate gatherings and grand entertaining. Outside, a serene courtyard featuring a koi pond with a cascading waterfall welcomes you to an oasis of calm. Beyond, an infinity pool with a spa and wet deck invites relaxation, all surrounded by manicured lawns and lush tropical landscaping. Breathtaking views stretch across the emerald fairways and out to the Pacific Ocean, with the distant silhouette of Maui. As part of the world-renowned Hualalai Resort, residents enjoy exclusive access to unparalleled amenities.

*corcoran*  
PACIFIC PROPERTIES

MAUNA LANI  
PORTFOLIO  
LUXURY  
REAL ESTATE  
BILLIONAIRES' CLUB

REALM™  
EXCLUSIVE MEMBER



Yvonne J. Khouri-Morgan  
Vice President, BIC  
REALTOR® | RB-13392  
The Mauna Lani Portfolio  
808.937.4466  
yvonne@alohalife.net  
www.HawaiiResortLuxuryHomes.com





\$14,000,000



223 PLANTATION CLUB DRIVE

Kapalua, Maui | 5,366 SQFT  
2.18 AC | 3BR/3.5BA  
MLS# 403222 | \$14,000,000

This expansive single-story estate in Kapalua’s gated Plantation Estates overlooks the 15th green of the Plantation Golf Course, offering prime views of The Sentry PGA Tour event. Featuring 64 feet of motorized pocket doors and large covered lanais, the home blends indoor and outdoor tropical living seamlessly. The open floor plan boasts 12-foot ceilings and includes two elegant living spaces, a dining area, a gourmet kitchen, an office, and a wine cellar. The property showcases a 60-foot free-form pool with a spa, water slides, a waterfall with a jumping rock, a grotto, a koi pond, a fire pit, and tiki torches. Set on 2.18 acres with over 40 fruit trees, the estate also offers a home gym, a golf cart, and advanced home automation. 223 Plantation Club Drive is ideal as a primary residence or vacation retreat.



Mary Anne Fitch  
R(B) 15747  
SENIOR PARTNER  
Coldwell Banker Island Properties  
Direct: 808.250.1583  
Email: maryanne@soldmaui.com  
Web: soldmaui.com



Nam L. Le Viet  
R(S) 61810  
GLOBAL LUXURY SPECIALIST  
Coldwell Banker Island Properties  
Direct: 808.283.9007  
Email: nam@mauisold.com  
Web: mauisold.com







\$13,800,000



## WAIEA VILLA NO. 1

Honolulu, Oahu | 10,520 SQFT  
5BR/6Full/3Half BA  
MLS# 202426135 | \$13,800,000

A front-row residence in the premier luxury tower, Waiea, offering views of Diamond Head, Ala Moana Beach, the ocean, & the city lights of Honolulu. This five-story home boasts a striking design by architect James Cheng, interiors by Tony Ingrao, & furnishings from Cantoni. The ground floor features a lap pool, outdoor kitchen, & dining area. The guest suites are on the second floor, while the third floor is dedicated to the primary suite, office, lounge & a spa-like bath. The fourth & fifth floors are for entertaining, with a two-story living room, bar, formal dining room, & a professional-grade prep kitchen. The top has the option to add a fifth bedroom.



### Erik Hinshaw

Real Estate Broker, RB-21068  
Hawai'i Life Real Estate Brokers  
808.800.6278  
erik@hawaiiilife.com  
www.hawaiiilife.com/erikhinshaw



**HAWAI'I LIFE**

**Forbes**  
GLOBAL PROPERTIES



Top 1.5% of more than  
1.6 million licensed  
Realtors® nationwide

RT REALTRENDS

### Noel Pietsch Shaw

MBA, Realtor-Associate, RS-75888  
Hawai'i Life Real Estate Brokers  
808.221.8889  
noelshaw@hawaiiilife.com  
www.NoelShaw.com





\$13,500,000



MODERN MASTERPIECE

Wailea, Maui | 5,126 SQFT  
0.50 AC | 4BR/4.5BA  
MLS# 402175 | \$13,500,000

From its highly sought after location at The Ridge at Wailea on Maui, this spectacular new build boasts panoramic ocean views + exceptional features and finishes. Beyond the covered parking promenade and through a gated garden courtyard, a steel and stone spiral staircase welcomes you to another level of luxury. Floor-to-ceiling wall of windows & doors provides natural light and views from south of Molokini to Maui's majestic West Mountains. Designed by Guy Dreier Designs & built by Trend Builders, this estate is enhanced by sculptural shapes, dramatic lines, and organic spaces. The seamless integration of indoor/outdoor spaces serves to further enhance the open-air, island lifestyle. Listing Broker has a recorded interest and Hawaii RE license.



Diane K Pool  
Hawaii Life – Forbes Global Properties  
Broker In Charge | RB-17896  
hawaiiLife.com/DianePool  
dianePool@hawaiiLife.com  
808.276.2004



Video: <http://vimeo.com/soldOnMaui>



HAWAI'I LIFE

Forbes  
GLOBAL PROPERTIES





\$12,950,000



## 325 HOKIOKIO PL

Lahaina, Maui | 4,938 SQFT | 5.14 AC  
5BR/5.5BA | MLS# 402624 | \$12,950,000

This stunning brand-new estate is situated on a prime 5-acre lot within Puunoa Estates, a prestigious gated community located just south of Lahaina Towne. It embodies a unique French Country Farmhouse-style architecture with chic modern interior design. The single-level sprawling floor plan includes a spacious great room and dining area, gourmet kitchen, 5 bedroom suites, and a separate media suite. The inviting exterior includes a beautiful pool, spa, and outdoor kitchen for relaxing and entertaining, and features outstanding views of the ocean, neighboring islands, West Maui mountains, sunsets, and whale watching in season.



**Caleb Findlay**  
R(S)-85544  
Compass  
Direct: 808.280.3028  
Email: caleb.findlay@compass.com



**COLDWELL BANKER**  
**ISLAND PROPERTIES**

**COMPASS**

**Mary Anne Fitch**  
R(B) 15747  
SENIOR PARTNER  
Coldwell Banker Island Properties  
Direct: 808.250.1583  
Email: maryanne@soldmaui.com  
Web: soldmaui.com





\$12,900,000



PARK LANE  
ALA MOANA

Honolulu, Oahu | 4,792 SQFT  
4BR/3.5BA | MLS# 202416727  
\$12,900,000

Rarely available, Four Bedroom Park Residence at Park Lane Ala Moana, Honolulu's preeminent luxury development. This Penthouse sized home, situated along the namesake Park Lane walk-way, is for the most discerning buyer. From this home, enjoy lush, tropical landscaping outside your back windows and direct ocean views out front. The interior design and custom upgrades in this home were done by award-winning luxury design firm Philpotts Interiors and include custom built-in Walnut cabinetry by Logan White, primary bedroom walk-in closet by Poliform, Designer light fixtures by Holly Hunt, Johnathan Browning, Bocci and Boyd. This home also includes a private garage and a deep 732 s/f covered lanai, making the outdoor space a true extension of the home.



Noel Pietsch Shaw  
MBA, Realtor-Associate, RS-75888  
808.221.8889  
noelshaw@hawaiilife.com  
www.NoelShaw.com



Top 1.5% of more than  
1.6 million licensed  
Realtors® nationwide



HAWAI'I LIFE

Forbes  
GLOBAL PROPERTIES





\$11,898,000



## 96 NIUIKI CIRCLE

Honolulu, Oahu | 4,302 SQFT | 0.31 AC  
4BR/5.5BA | MLS# 202415189 | \$11,898,000

This stunning, new tropical modern home epitomizes seamless indoor/outdoor living! With over 120 feet of ocean frontage and 180-degree views from Koko Head to Diamond Head, it's a masterpiece of design and location. Exquisite craftsmanship by architect Pip White and builder John Gregory is evident in the ceilings, woodwork, and rockwork. Cantilevered pocket doors and Italian porcelain tile flooring connect the kitchen and living areas to the lanai, pool, and hot tub overlooking Maunalua Bay. Unwind on your private pier with direct ocean access. This isn't just a home; it's a luxurious sanctuary where dreams become reality!



List

**Sotheby's**  
INTERNATIONAL REALTY



**Drew Read**

Realtor®

RS-67769

808.782.3636

realestate@drewread.com

drewread.com





\$10,900,000



VICTORIA PLACE  
COMBO UNIT  
1000+1001

Honolulu, Oahu | 3,716 SQFT  
4BR/4.5BA | MLS# 202426965  
\$10,900,000

At Victoria Place, this residence captures a rare perspective where Honolulu's ocean, sky, & city converge, creating a tranquil refuge from cosmopolitan life. Floor-to-ceiling glass stretches across the entire (86 linear feet) front of the building, framing the Pacific Ocean. Designed in collaboration with Lauren Rammer Designs & furnished by Lined Up Resources, this residence is being offered turnkey & also features a notable portfolio of fine art curated by Tusha Buntin Fine Art Services, including Mid Century & classic Hawaiian artists including Tadashi Sato, Jerry Okimoto, Harry Tsuchidana, John Young, Toshiko Takaezu & many more.



Noel Pietsch Shaw  
MBA, Realtor-Associate, RS-75888  
808.221.8889  
noelshaw@hawaiiilife.com  
www.NoelShaw.com



Top 1.5% of more than  
1.6 million licensed  
Realtors® nationwide



HAWAI'I LIFE





\$9,738,000



## BEACHFRONT ESTATE ON OAHU'S NORTH SHORE

North Shore, Oahu | 4,730 SQFT  
0.432 AC | 4BR/3Full/2Half BA  
MLS# 202412573 | \$9,738,000

Stroll to the beach from this turn-key estate framed by the Pacific Ocean. Extensively remodeled in 2021, this home has top-of-the-line luxury finishes, fixtures, & a state-of-the-art lighting & technology. A bright, spacious kitchen featuring natural stone countertops, Sub-Zero, Wolf & Thermador appliances, and a 100-bottle wine refrigerator, make for effortless entertaining. The vaulted ceilings, hardwood floors, & neutral colors throughout lend an air of laid-back glamor to this property. All the activities of Oahu's North Shore are at your backdoor including snorkeling, surf spots, and miles of white sandy beach for beach walks.



HAWAII LIFE

**Forbes**  
GLOBAL PROPERTIES



Top 1.5% of more than  
1.6 million licensed  
Realtors® nationwide

RT REALTRENDS

Noel Pietsch Shaw

MBA, Realtor-Associate, RS-75888

808.221.8889

noelshaw@hawaiiilife.com

www.NoelShaw.com





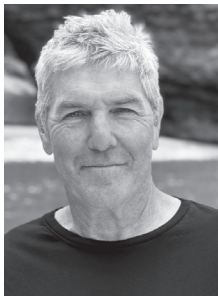
\$9,400,000



5108 OPELU ST

Hanalei, Kaua'i | 2,192 SQFT  
7,984 SQFT Land | 3BR/3.5BA  
MLS# 714112 | \$9,400,000

This beautifully renovated Hanalei home boasts stunning ocean and mountain views. Inside, you'll find updates like Silestone Quartz countertops, new cabinetry, designer furnishings, and high-end appliances. The home features vaulted ceilings, ample windows, and large sliding glass doors for natural light and airflow. The open floor plan connects the kitchen, living, dining, and office areas to multiple lanais. Just 25 steps from Hanalei Beach, enjoy ocean views in front and mountain views in back. The property includes various outdoor spaces, a tropical yard, a yoga/art studio, and a loft for recreation or guests.



Neal Norman  
Director | Hawaii Life 1  
Realtor Broker  
808.651.1777  
neal@hawaiilife.com  
www.nealnorman.com  
www.hl1.com



HAWAII LIFE

Forbes  
GLOBAL PROPERTIES





2845 PUALEIKUKUI PLACE  
Kukui‘ula, Kaua‘i | 2,872 SQFT  
18,694 SQFT Land | 4BR/4.5BA  
MLS# 716498 | \$9,350,000

This newly constructed home is designed for comfort and island living. Located in Kukui‘ula, this residence blends modern design with Kaua‘i’s natural beauty. The open-concept great room and chef’s kitchen are perfect for entertaining, while the lanai, firepit, and poolside cabana offer serene outdoor living. The 4-bedroom, 4.5-bath layout includes a luxurious primary suite with indoor/outdoor bath, a spa-like secondary suite, spacious bunk room, and a restful fourth suite. With nearly 3,000 sq ft of interior space and over 1,000 sq ft of lanai, this home is made for enjoying the island life.





\$8,950,000



500 MAHANA RIDGE

Kapalua, Maui | 3,759 SQFT  
111,382 SQFT Land | 4BR/3.5BA  
MLS# 403240 | \$8,950,000

This coastal dream home in Maui’s Mahana Estates offers stunning ocean views and close proximity to pristine beaches and a championship golf course. The 4-bedroom, 3.5-bath home features high-quality fixtures, modern luxury, and a chef’s kitchen with top-of-the-line appliances. The owner’s suite has a luxurious soaking tub and shower, and the property also includes a flex room, spacious garage, and a guest cottage. Enjoy the refreshing saltwater pool and outdoor kitchen as you take in the vibrant Maui sunsets at this exceptional 2.5-acre property.



David W. Richardson  
REALTOR Broker, RB-10780  
Hawaii Life Real Estate Brokers  
Direct 808.870.9916  
Dave@HawaiiLife.com  
www.MauiOceanfront.com  
HL-1 Director | “Over \$1 Billion in Sales”



Stefanie Hegrenes, PhD  
REALTOR Salesperson, RS-84399  
Hawaii Life Real Estate Brokers  
Direct 808.214.8114  
StefanieHegrenes@HawaiiLife.com





\$8,750,000



## 3027 KALAHIKI STREET

Kukui'ula, Kaua'i | 4,490 SQFT  
35,937 SQFT Land | 4BR/5.5BA  
MLS# 717621 | \$8,750,000

Gracious in every way, this property presents as a gathering place for elegant and casual occasions. The great room's vaulted ceilings, custom wood floors, built-ins and furnishings create a welcoming ambiance. Step into the well-designed kitchen with a view, noting how it meets the test of any chef. Work from home in one of two offices. Open the imported custom Albertini windows and doors to the bird's-eye-view lanai featuring access to the backyard pool as well as vistas of the coast, white water, golf and lush Kaua'i. As the day concludes, all will retire to their own bedroom retreats with the primary suite boasting a spa-like bath. Featuring photovoltaic, a Tesla Powerwall, solar and state-of-the-art whole home media package, this Kukui'ula residence delivers an elevated living experience.



**Hannah Sirois**  
REALTOR(B) | RB-15263  
808.639.2367  
Hannah@KauaiHP.com  
SiroisKauai.com













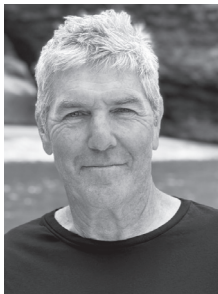
\$8,650,000



150 LOLO RD

Kalaheo, Kaua'i | 30.15 AC Land  
MLS# 714129 | \$8,650,000

Welcome to Mapuana Ranch, a breathtaking 30-acre property located on Kauai’s idyllic southwest coast. This unique piece of paradise is perched on a rolling hill above the sprawling Kauai Coffee Plantation, offering unparalleled views of the Pacific Ocean and the distant island of Niihau. The ranch is continuously refreshed by gentle tradewinds, creating a tranquil and inviting atmosphere perfect for embracing island life. Just minutes away from the charming towns of Kalaheo and Koloa, Mapuana Ranch provides easy access to local shops, restaurants, and essential services. These towns retain the warm, welcoming feel of Kauai’s close-knit communities, blending the island’s historic charm with modern conveniences.



**Neal Norman**  
Director | Hawaii Life 1  
Realtor Broker  
808.651.1777  
neal@hawaiilife.com  
www.nealnorman.com  
www.hl1.com



**HAWAI'I LIFE**

**Forbes**  
GLOBAL PROPERTIES



\$8,495,000



# WALEA GOLF ESTATES PHASE II

Wailea, Maui | 13,338-14,565 SQFT Land  
\$5,395,000 - \$8,495,000

Welcome to Wailea Golf Estates II, the final offering in Wailea's premium golf community. Nestled in a serene locale, this exclusive opportunity presents panoramic ocean/sunset, golf course views, providing the perfect canvas to design your dream home. Take advantage of under-market values and secure your place today.  
**NOW ONLY 5 LOTS LEFT!**



HAWAII LIFE

Forbes  
GLOBAL PROPERTIES

David W. Richardson

(R)B 10780

Hawaii Life Real Estate Brokers

Direct 808.870.9916

www.MauiOceanfront.com

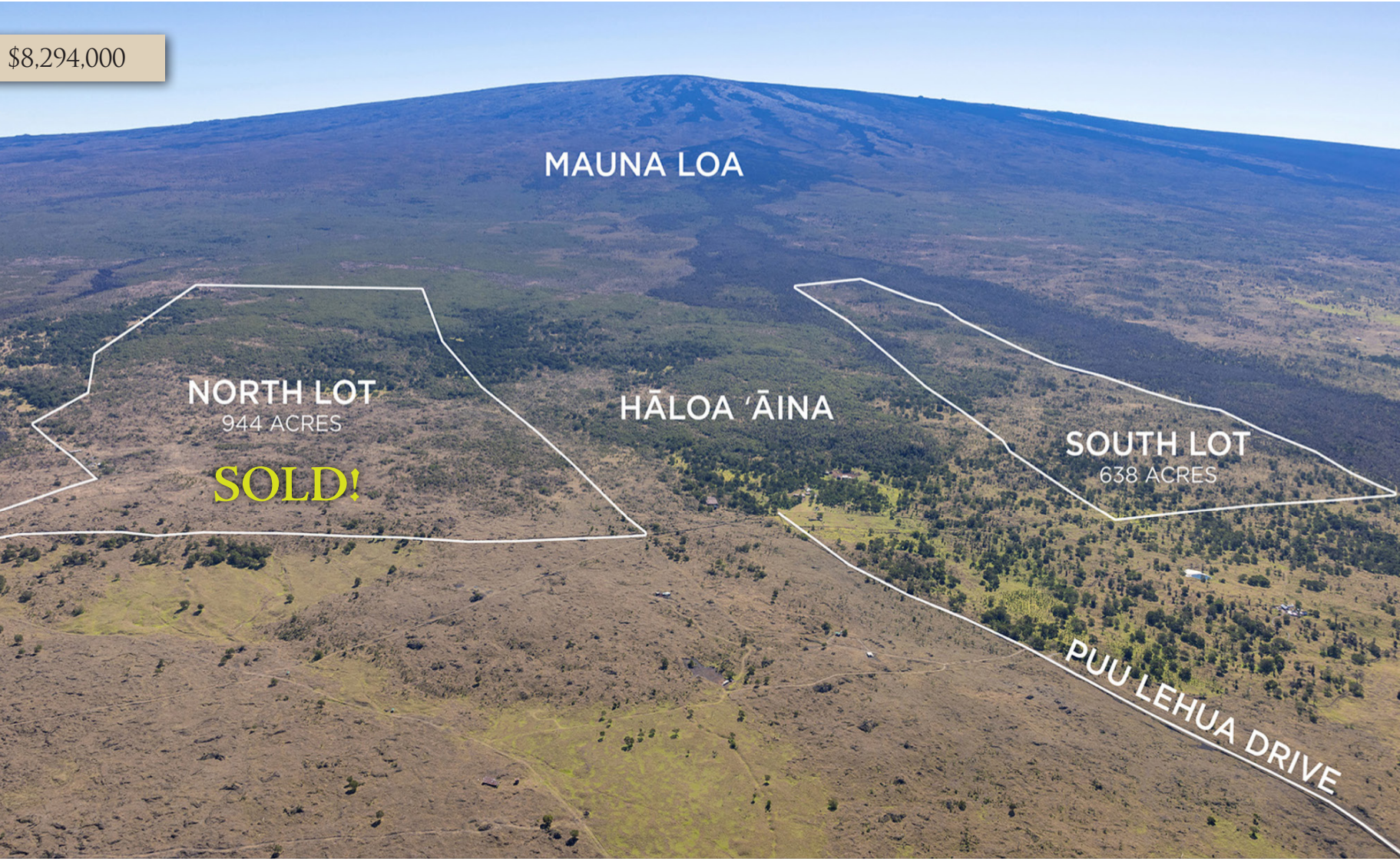
Dave@HawaiiLife.com

HL-1 Director | "Over \$1 Billion in Sales"





\$8,294,000



HĀLOA 'ĀINA  
SANDALWOOD  
AND KOA FOREST

South Kona, Big Island | 636.70 AC Land  
MLS# 715394 | \$8,294,000

Rare Sandalwood & Koa Forest in South Kona. Exceptional opportunity to be owners and stewards of a Native Hawaiian Dry Land Forest, just 35 minutes South of Kona Town. Located between 4800 ft - 5800 ft elevation up the private paved Puu Lehua Drive. This unique ecosystem is among the rarest on Earth. For 14 years, the Lee Ohana has restored the land, producing the world's finest Sandalwood Oil while revitalizing the forest. Six of the world's 18 Sandalwood species are endemic to Hawaii, including the prized Santalum Paniculatum found here. Sustainable harvesting, invasive species removal, and thousands of new native plantings have led to a thriving forest with doubling rainfall. A significant inventory of Koa & Sandalwood makes this an incredible investment.



Sean F. Ginella  
RS-62324  
REAL Broker  
808.372.8700  
SeanGinella@me.com  
www.seanginellahawaii.com



LUXURY



\$7,850,000



## 29 HALE MALIA PL

Napili, Maui | 3,250 SQFT | 13,325 SQFT Land  
4BR/3BA | MLS# 402369 | \$7,850,000

There are two types of people in this world - those that live on the ocean and those that do not. Hale Malia (home of calm waters) has been known as the crown jewel of Maui oceanfront for over 50 years. Situated on a quiet, private, gated road and one of only 6 homes sites, 29 Hale Malia stands out as the premier lot. This family Hawaiian style estate has never been offered for sale and is priced almost \$2M under recent appraisal. Situated halfway between Kaanapali and Kapalua resorts with easy access to shops and restaurants. Mature landscaping with native trees and shrubs add to the feeling of old Hawaii. Enjoy an expansive, Westerly view of Lanai and Molokai and fantastic sunsets all year round.



**Kelly Robinson**  
Realtor (S) 81469  
Moffett Properties  
808.264.7232  
kellyrobinsonmaui@gmail.com  
kellyrobinsonmaui.com

*Moffett Properties* LLC.

**Buz Moffett**  
Owner / Principal Broker, RB-22561  
Moffett Properties  
808.870.6794  
buz@surfingrealty.com  
www.surfingrealty.com





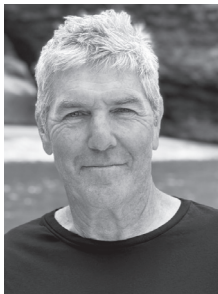
\$7,650,000



5880 KAHILIHOLE RD

Kilauea, Kaua'i | 4,502 SQFT  
3.50 AC Land | 4BR/3.5BA  
MLS# 709510 | \$7,650,000

This secluded 3.5-acre estate offers Bali-style luxury with breathtaking Mt. Namahana views. The 4,502 sqft main residence features 4 bedrooms, 3.5 baths, and a grand 1,750 sqft great room. The outdoor living spaces, including an infinity-edged saltwater pool and spa, are perfect for entertaining. The property also includes a gym, oversized garage, air conditioning, and a writer's cottage. Enjoy world-class golf, pristine beaches, and surf spots nearby. This is one of the finest properties on Kauai's North Shore.



Neal Norman  
Director | Hawaii Life 1  
Realtor Broker  
808.651.1777  
neal@hawaiilife.com  
www.nealnorman.com  
www.hl1.com



HAWAII LIFE

Forbes  
GLOBAL PROPERTIES





\$7,400,000



YOUR EXCLUSIVE  
MAUI SANCTUARY

West Maui | 3,197 SQFT  
5.59 AC | 4BR/4BA  
MLS# 403884 | \$7,400,000

Nestled at the foot of the West Maui Mountains, this 5.59-acre Launiupoko estate redefines luxury island living. The 3,197 sq ft main residence features 4 bedrooms and 4 baths, complemented by a 2-bedroom Ohana. Exquisite details include Venetian plaster walls, travertine flooring, and African Mahogany cabinetry. The property boasts a heated infinity pool, fruit orchards, and panoramic ocean views. Witness breathtaking sunsets and stargaze under clear Maui skies. This sanctuary offers a perfect blend of opulence and natural beauty, where every day feels like a vacation. Experience the true essence of island life in your private slice of paradise at 85 Lau Awa Place.



**Elise Valceschini**  
Realtor®(S) | RS-82871  
Speicher Group  
Coldwell Banker Island Properties  
Direct: 808-463-2445  
Email: [elise@speichergroup.com](mailto:elise@speichergroup.com)  
[speichergroupmaui.com](http://speichergroupmaui.com)



**Cari Tilley**  
Realtor®(S) | RS-82351  
Speicher Group  
Coldwell Banker Island Properties  
Direct: 808-214-4492  
Email: [cari@speichergroup.com](mailto:cari@speichergroup.com)  
[speichergroupmaui.com](http://speichergroupmaui.com)





\$6,900,000



## WAIMEA'S BEST KEPT SECRET

Waimea/Honokaa, Big Island | 5,476 SQFT  
40 AC | 4BR/4.5BA | MLS# 706465 | \$6,900,000

Welcome to your private 40-acre Waimea oasis. Enjoy the amenities of Waimea town only minutes away or the seclusion the estate provides. Built for entertainment, this custom home seamlessly blends the interior with dramatic scenery of the environment. Lush botanical landscaping welcomes guests through meandering pathways allowing for contemplation or recreational vehicles. The focal point of the estate is the custom-built residence with 18-foot cathedral ceilings, Ohia accents, hardwood/stone flooring and custom cabinetry. The entertainment area extends with a custom salt water heated pool, spa grotto, slide, waterfall, firepit and outdoor kitchen suite. Additional recreational buildings include a detached guest suite, workshop and multipurpose building. Endless opportunities await with Waimea's best kept secret!



**Charlene Nishida**  
RS-86851, Realtor  
808.216.1028  
charlene@luvarealestate.com  
www.luva-realestate.com



Featured in Global Mansion article  
"Glamorous Garages and Beautiful Barns: The New Must-Have Amenities"

## Lance Owens

RB-24133, BIC | Ambassador  
HAR 2024 President Elect | State RPAC Chair  
808.936.8383  
Lance@konahometeam.com  
KonaHomeTeam.com





\$6,875,000



## ISLAND OCEANSIDE LIVING!

**Kamuela, Big Island**  
**2,520 SQFT | 11,855 SQFT Land**  
**3BR/3BA | MLS# 704201**  
**\$6,875,000**

Inviting Puako oceanfront home located within steps of a sandy beach, the ocean and reef! Expansive ocean, coastline and Maui views!

This resort-quality well designed home offers the comfort and beauty of oceanfront and beach living. Two primary suites, ensuite baths & private lanais offer privacy. The spacious living area flows into a covered lanai creating additional living space. This home is being sold beautifully furnished and ready to move into!

It is found in a prime location within the charming Puako oceanfront community, its own oasis on the Big Island Gold Coast between world class resorts.



**Margery Mayo**  
 REALTOR® Broker in Charge | RB-17852  
 68-1330 Mauna Lani Drive, Suite 104  
 Kohala Coast, HI 96743  
[www.HapunaRealty.com](http://www.HapunaRealty.com)  
[margerymayo@margerymayo.com](mailto:margerymayo@margerymayo.com)  
 Office: 808.657.4292 | Cell: 808.987.6385





\$6,500,000



HALE MALUHIA

Kukui'ula, Kaua'i | 2,816 SQFT  
0.32 AC | 4BR/4.5BA  
MLS# 715927 | \$6,500,000

A luxurious oasis awaits. This 2,816 sq. ft. home + 880 sq. ft. lānai blends indoor-outdoor living. With 4 bedrooms, 4.5 baths, and a bunk room, it's ideal for guests. Relax in the infinity-edge pool, jacuzzi, or aqua lounge in the landscaped backyard. Swim up to the barstools at the cabana bar with BBQ, sink, fridge, and live-edge bar top. Inside, Subzero Wolf appliances, solid teak cabinets, and vaulted shiplap ceilings shine. Teak vanities, doors, and posts add elegance. Large ceramic tile ensures durability, perfect for a vacation rental. Walk to the Clubhouse, Golf Course, and Spa. A true gem in Kukui'ula!



Suzanne M. Harding  
(RB)  
Real Estate Sales Executive  
smharding@kukuiula.com  
808.651.5737  
www.kukuiula.com



Jeff Skinner  
(R)  
Real Estate Sales Executive  
jskinner@kukuiula.com  
808.339.1308  
www.kukuiula.com







\$6,500,000



# LANIKAI HALE

**Kukui'ula, Kaua'i | 2,124 SQFT**  
**0.37 AC | 4BR/4BA**  
**MLS# 715959 | \$6,500,000**

Nestled in Kaua'i's lush landscapes, Lanikai Hale offers the ultimate island retreat. This four-bedroom sanctuary in Kukui'ula's Kainani neighborhood blends elegance and thoughtful design, featuring an airy open-concept living area with retractable glass doors, a spacious covered lānai, private pool, and outdoor kitchen with sweeping fairway and ocean views. Accommodations include a detached 'ohana for up to 10 guests, spa-like ensuites, a garden shower, and a custom stone tub. Relax by the firepit, sway in hammocks, or gather in the marble-clad kitchen. Lanikai Hale is your gateway to Kukui'ula's serene beauty and unforgettable adventures.



**Jeff Skinner**  
 (R)  
 Real Estate Sales Executive  
 jskinner@kukuiula.com  
 808.339.1308  
 www.kukuiula.com



**Suzanne M. Harding**  
 (RB)  
 Real Estate Sales Executive  
 smharding@kukuiula.com  
 808.651.5737  
 www.kukuiula.com







**"New colorway,  
Ginko Fan Jazzy Blue"**  
Visit one of our showrooms  
or website for Hawaii's best  
selection of Fine Oriental  
Carpets and Hawaiian Rugs



SERVICING ALL ISLANDS

[IndichCollection.com](http://IndichCollection.com)

**Honolulu - Nimitz Hwy**

Na Lama Kukui  
(formerly the Gentry Pacific Design Center)  
560 N. Nimitz Hwy #101, Honolulu, HI 96817  
808.524.7769  
Monday-Saturday: 9:30-5:30

**Honolulu - Ward Ave**

550 Ward Ave.  
Honolulu, HI 96814  
808.596.7333  
Monday-Saturday:  
9:30-5:30, Sunday: 10-4

**Maui**

259 East Wakea Ave.  
Kahului, HI 96732  
808.877.7200  
Monday-Friday: 9:30-5

**Kona**

Kaloko Business Center V  
73-5617 Maiau St.  
Kailua-Kona, HI 96740  
808.329.6500  
Monday-Sunday: 10-6





\$6,480,000



## 4131 BLACK POINT PLACE

Honolulu, Oahu | 3,833 SQFT  
9,650 SQFT Land | 3BR/3Full/2Half BA  
MLS# 202427802 | \$6,480,000

“The Crest,” an architecturally significant landmark oceanfront home in Diamond Head, offers unparalleled views and timeless design. Originally designed by Frank Lloyd Wright’s apprentice, 4131 Black Point Place has been re-imagined and modernized in 2016. This one-of-a-kind residence fuses island luxury living with Hawaii’s natural majesty on a unique scale. Wright’s Organic Architecture flows throughout this spectacular steel-frame creation, where terraced cliffside architecture maximizes Pacific Ocean views from every room. Offering a highly-flexible 3-bedroom, 3-story floor plan, execute your creative vision within this historically significant Hawaii retreat.



## Vince Vanderstroom

Sachi Hawaii  
Realtor Assoc., RS-58374  
808.778.0065  
vince@sachihawaii.com





\$6,250,000



116 KUAU BEACH PL

Paia, Maui | 1,780 SQFT  
0.38 AC | 4BR/3BA  
MLS# 404256 | \$6,250,000

Oceanfront home and cottage in a highly desirable, private Kuau neighborhood on Maui’s renowned North Shore. Just minutes from sandy beaches, Kuau Store, Mama’s Fish House, and a short drive to the vibrant town of Paia. This 4-bedroom, 3-bath home has a remodeled interior and a beach-inspired exterior. An open-concept first floor features wall-to-wall sliding doors that offer captivating ocean views complimented by high ceilings, seamlessly blending indoor and outdoor living. Adding to the appeal is a charming detached 3-bedroom, 2-bath cottage (1,092 SQFT) with classic plantation-style architecture. This property is your opportunity to own in one of Maui’s most coveted locations.



LuxuryHomeMagazine.com



Josh Jerman

REALTOR(B), RB-19728

808.283.2222 | Josh@HawaiiLife.com



HAWAI'I LIFE

Forbes

GLOBAL PROPERTIES





\$5,700,000



## 227 ANAPUNI LOOP

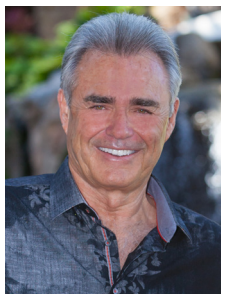
Lahaina, Maui | 3,626 SQFT | 4BR/4BA  
MLS# 402489 | \$5,700,000

Perfectly located above the world famous Ka'anapali Beach, this home has unparalleled panoramic ocean and island views of Lanai and Molokai. This home is located in the prestigious gated community of Lanikeha, and is built to the highest standards. Coupling luxury and contemporary aesthetics, 227 Anapuni Loop will satisfy the most discriminating buyer. This well-appointed residence has 568 sqft of covered lanai and an infinity-edge pool. The 55 ft. wide pocket doors in the great room open onto the lanai, pool & jacuzzi area. Resort-style amenities abound in the Lanikeha Clubhouse. Immerse yourself in an atmosphere of sophistication and tranquility. [MauiHomeSales.com/227AnapuniLoop](https://www.MauiHomeSales.com/227AnapuniLoop)



For all the Maui listings check out my website:  
**[www.MauiHomeSales.com](https://www.MauiHomeSales.com)**  
The West Maui Home Specialist

**Robert R. Myers**  
Realtor Salesperson #58532, SRS  
Tel: 808.283.3067  
[Robert@MauiHomeSales.com](mailto:Robert@MauiHomeSales.com)  
[www.MauiHomeSales.com](https://www.MauiHomeSales.com)







## ARCHITECTURAL FORM AND FUNCTION

SEE PAGE 51



\$5,600,000



## 876B AALAPAPA DR

Kailua, Oahu | 4,617 SQFT  
10,019 SQFT Land | 4BR/2.5BA  
MLS# 202416791 | \$5,600,000

LANIKAI OASIS: Secretly nestled at the start of Lanikai, this architectural accomplishment sits amidst a canopy of tropical treetops, connecting you to nature. The main living level greets you with vaulted ceilings and walls of windows that disappear so you feel as if you are in a treehouse. Stately office & powder room join the main level along with a formal dining room, eat-in kitchen & living room w/2 covered lanais. A spiral staircase leads to a rooftop deck with ocean views. Another staircase leads to a pool & spa w/waterfalls. Downstairs, 3/2 + 2-car garage. Primary suite offers walk-in closet & French doors to a private lanai. Every room connects to covered wrap-around lanai, even the bathrooms. Amidst the mature landscape, a grassy open area for kids and pets to play. All this just 1 block to the nearest beach entrance!



**Joel Cavasso**  
Realtor, B-13463  
808.216.9988  
joelcavasso@me.com  
www.lanikailua.com

LANIKAI  
LUX TEAM

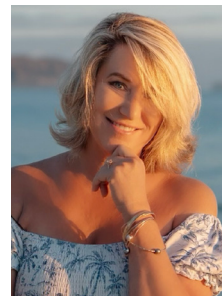


OF EXP REALTY RB-21841



## Sherine Duncan

Realtor, S-76286  
808.554.2262  
Sherine@hawaiiluxhomes.com  
www.hawaiiluxhomes.com





\$4,995,000



84-485 FARRINGTON HWY

Waianae, Oahu | 2,246 SQFT  
20,865 SQFT Land | 5BR/3BA  
MLS# 202418644 | \$4,995,000

One of the few Makaha Beachfront/ Oceanfront homes on over 20,000 sqft. of R-10 zoned land. Located about 5 houses east of the public beach, so very private and peaceful. Above the garage is a new large luxury owner studio with a large wet bar, full bath, and stunning ocean & mountain views in every direction. Also included are two separate 2 bedroom, 1 bath cottages for a total of 3 living areas. The property has spectacular mountain cliff views to the rear and wide open ocean views in front. Reef rock ocean frontage helps protect the property from erosion issues. Enjoy snorkeling, surfing, Kayaking, canoe surfing, sup boarding, and famous Makaha surf contests. Watch whales, dolphins, and turtles frolic in the crystal clear west side waters directly in front of the home.



**Ralph Gray**  
VP, RA, e-PRO  
Hawaii Homes International  
Ralph@HawaiianBeachfront.com  
808.295.0704

Locally Established  
Globally Connected

**Hawai**  
**Homes**  
INTERNATIONAL  
Luxury Edition



\$4,900,000



PRICE REDUCTION!

North Shore, Oahu | 2,253 SQFT  
25,134 SQFT Land | 3BR/2BA  
MLS# 202422029 | \$4,900,000

Kawela Bay's Crown Jewel of the North Shore. First time available in over 20 years. There are only 11 Sandy Beachfront properties in the Kawela Bay Gated community. This is the ONLY beachfront home on an over 25,000 sqft lot allowing for second guest cottage on the property. Quaint refurbished beachfront home with outdoor shower and surfboard storage room under the house. Kawela Bay is protected from big waves and is safe to swim 365 days a year. Great for fishing, diving, snorkeling, surfing and Turtle watching. Over 1/2 of Kawela Bay is protected conservation land. Direct Access to 880 acres of Turtle Bay Resort property with dozens of miles of hiking and biking trails. Enjoy top Ranked Palmer Golf Course, Restaurants, Spa and Resort Amenities just a short walk away.  
\*\*REDUCED PRICE\*\*



Lex Ferguson  
RS-78101  
REAL Broker  
808.277.4715  
lex@lifeonoahu.com  
www.lifeonoahu.com

real LUXURY

Sean F. Ginella  
RS-62324  
REAL Broker  
808.372.8700  
SeanGinella@me.com  
www.seanginellahawaii.com





# cheers to 20 years!



"As we commemorate *Luxury Home Magazine's* 20th anniversary, we reflect on two decades of showcasing Hawaii's most exquisite homes. Since its launch in 2006, this publication has set the gold standard in luxury real estate marketing, offering unparalleled visibility for the island's finest properties. We are proud to have been a part of this incredible journey from the very beginning, consistently reserving the prestigious first two pages to highlight the extraordinary properties we represent.

*Luxury Home Magazine* has become a trusted resource for connecting discerning buyers, sellers, and real estate professionals. With its wide distribution across the islands and presence in bookstores and high-profile locations, it continues to be an indispensable tool for showcasing the best of Hawaii's luxury real estate market.

Here's to 20 remarkable years and many more to come!"

**Jack & May Tyrell**

Member since 2006 | See pages 2-3

"I have been proud to feature my luxury listings in *Luxury Home Magazine Hawaii* for many years. My clients have always appreciated the quality of the magazine and the exposure to affluent Hawaii owners and prospects. I look forward to continuing my relationship with the magazine and celebrate their 20th anniversary with their great team."

**Mary Anne Fitch**

Member since 2009 | See pages 16 & 19



"We greatly value our long history of success with *Luxury Home Magazine*, which we consider Hawaii's premier publication showcasing the most exceptional and sought-after properties. Having our listings featured in their magazine is a significant highlight of our portfolio and we look forward to many more successful editions to come."

**Yvonne J. Khouri-Morgan**

Member since 2008 | See page 15

"*Luxury Home Magazine* has been a cornerstone of our marketing strategy since the inception of Sachi Hawaii, playing a pivotal role in the successful sale of our landmark properties. Congratulations on 20 remarkable years!"

**Sachi Braden**

Member since 2007 | See page 54

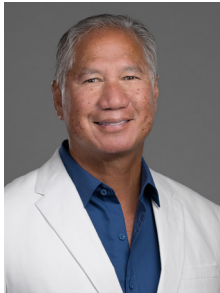




"Congratulations on 20-years!!!! LHM is the pinnacle of luxury marketing in the real estate industry in the Hawaiian Islands. Thank you for creating such a beautiful publication that allows top agents to collaborate & showcase our luxury listings together, to make it as easy as possible for our clients to preview the State's top inventory. I'm a true believer in the power of marketing!"

**Noel Pietsch Shaw**

Member since 2018 | See Front Cover & pages 10-11, 13, 17, 20, 22-23



"Congratulations on staying on top of your game *Luxury Home Magazine* Hawaii! Having the honor of being one of the original advertisers, I can honestly say your publication has greatly contributed to the success of my business for 20 years. We look forward to a continued collaboration for many years to come."

**Gregory Harbottle**

Member since 2006 | See page 7

"Congratulations on this great honor of celebrating your 20 year anniversary! The LHM team is so professional and always top notch in service to provide opportunities to promote myself and my sellers."

**Esther Park Kusunoki**

Member since 2015 | See page 60



"Thank you LHM for your forward-thinking ways and always working with me to highlight our beautiful island homes! I so appreciate you!"

**Tracy Allen**

Member since 2009 | See pages 4-5

"My partnership with *Luxury Home Magazine* represents an extraordinary collaboration that has been instrumental to our brand. As the definitive showcase of Hawaii's most prestigious real estate, their publication has been an invaluable platform for presenting our most distinguished property listings. Being featured in their pages is not just an honor, but a testament to the exceptional quality of our offerings. We are deeply committed to continuing this prestigious relationship and anticipate many future editions that will further elevate our portfolio."

**Eileen Lacerte**

Member since 2014 | See page 12



"Working with *Luxury Home Magazine* over the past 17 years has been a pleasure. They not only deliver quality advertisements but they offer our company a double spread ad occasionally, making our presence in LHM a win-win business adventure."

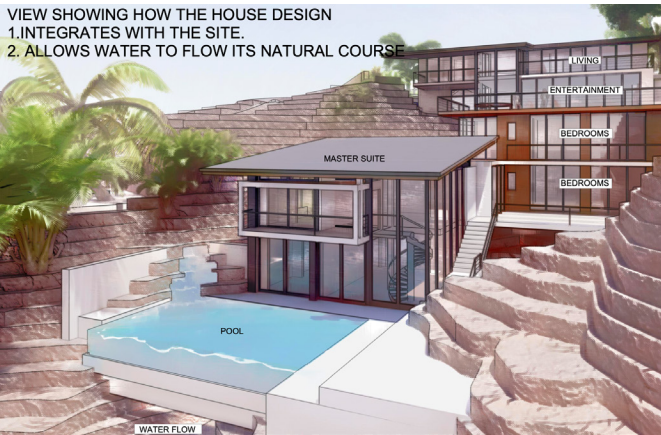
**Larry Padilla**

Member since 2009 | See page 6





\$4,500,000



## OCEANFRONT AT 3 POIPU

Honolulu, Oahu | 35,155 SQFT Land  
MLS# 202421776 | \$4,500,000

A rare opportunity to build your custom oceanfront estate in Honolulu's coveted Portlock neighborhood. This expansive south facing 35,155 square foot lot offering unparalleled privacy and security, with breathtaking panoramic views of Maunalua Bay with occasional turtles, dolphins, and whales in the winter. Approved architectural plans are available for building over 11k sqft multilevel modern residential home, showcasing a luxurious design that maximizes the site's potential by utilizing its natural beauty and topography to preserve the land and the environment. This is more than just a property; it's a prestige unique moment to build your own oceanfront masterpiece.



**Christine MyHanh Bondroff**

President/CEO/Principal Broker  
(R, CRS) RB-19520  
Honolulu Hawaii Realty  
808.352.6678  
christine@besthawaiihomes.com  
www.besthawaiihomes.com







\$3,988,000



## 1031 IKENA CIRCLE HAWAII LOA RIDGE

Honolulu, Oahu | 5,082 SQFT  
10,253 SQFT Land | 5BR/5BA  
MLS# 202422194 | \$3,988,000

Elegant 5 bedroom home nestled in serene mountain setting. Enter the home and walk in to high ceilings with floor to ceiling sliding glass windows and doors that open out to the swimming pool, the gardens, and majestic mountain views. Diamond Head view too on one side. Nice open floor plan with living room, dining room, kitchen and family room all opening out to the outdoors. Remodeled with new wood floors, and lots of glass and marble throughout including 36 PV panels. Convenient layout with 3 car garage on the same level as the main entry and living areas plus a one bedroom and bath. Enjoy Hawaii Loa Ridge community amenities of tennis and pickle ball courts, clubhouse, playground and walking trail and security. Park and walking trail just a few houses away. A truly great home!



**COLDWELL BANKER**  
REALTY

## Dolores & Amanda Panlilio Bediones

REALTOR®, RB-15568 | REALTOR-ASSOCIATE®, RS-77207

Dolores.Bediones@cbrealty.com | 808.383.9787

Amanda.Bediones@cbrealty.com | 808.381.7848

[www.coldwellbankerhomes.com](http://www.coldwellbankerhomes.com)

[www.doloresbedioneshawaii.com](http://www.doloresbedioneshawaii.com)





\$3,975,000



440 MIKIOI PL

Kihei, Maui | 3,753 SQFT | 0.508 AC  
5BR/6BA | MLS# 403844 | \$3,975,000

Behind the rock wall enclosed ½ acre lot lies a tropical oasis that is serene & inviting. The main house was fully remodeled between 2019 and 2022, including new roof, plumbing, electric, owned PV, leased PV on the two ohana units, in-ground fiberglass saline pool, a self-sustaining koi pond + a multitude of koi, outdoor kitchen, outdoor shower, new brick driveway lined with electric powered tiki torches, dual-pane, vinyl clad windows & sliders, new stainless steel appliances, cherry wood cabinets, granite counter tops, split-system A/C in living-dining and all bedrooms, ceiling fans in every room, extended wrap around lanai, oceanview hot tub-spa next to primary bedroom, 6-car garage + extra storage, and so much more. A “must see” property.



**Karin S. Carlson**  
RB-19739, ABR, AHWD, BROP, CLHMS, CRS  
e-PRO, GREEN, GRI, RSPS, SFR, SRS  
President/ REALTOR®s Association of Maui 2022-2023  
RAM Broker of the Year 2024  
808.283.8147  
KarinOnMaui@gmail.com  
HawaiiLife.com/agents/KarinCarlson



HAWAI'I LIFE

Forbes  
GLOBAL PROPERTIES



\$3,850,000



## MOANI HEIGHTS MAUNA KEA RESORT

South Kohala, Big Island | 2,896 SQFT  
23,439 SQFT Land | MLS# 715671 | \$3,850,000

This is more than a home—this is a lifestyle! Experience the essence of luxury island living in this exquisite home designed to seamlessly blend indoor elegance with outdoor splendor. This stunning home offers the ultimate in comfort, privacy, and resort-style living. Step into a bright and open floor plan with Koa wood flooring, a chef's delight gourmet kitchen perfect for entertaining or enjoying intimate island-style dining. Four spacious bedrooms plus a private ohana suite with an outdoor tiki pool hale and photovoltaic system with Tesla batteries. As owner, you'll have the opportunity to join the exclusive Mauna Kea Club offering access to world-class golf, tennis and pickle-ball, luxury amenities, and the pristine beaches at two world-class hotels.

DISTINCTIVE  
COLLECTION

by  
**Better Homes  
and Gardens**  
REAL ESTATE®

ISLAND LIFESTYLE



**Renée H. Kraft**

REALTOR® Broker RB-23004

Certified Luxury Property Specialist along the Kona and Kohala Coast  
BA, CLHMS GUILD, CRS®, SRS®, RSPS®, PSA®, CNE®, RENE®, GREEN®, ABR®, AHWD®, GRI®

Direct: 808.345.2108

Email: [renee@SearchHawaiiProperty.com](mailto:renee@SearchHawaiiProperty.com)

Web: [www.SearchHawaiiProperty.com](http://www.SearchHawaiiProperty.com)

Office Address: 68-1330 Mauna Lani Drive Suite 308 Kohala Coast, HI 96743





\$3,500,000



## 3852 POKA STREET

Honolulu, Oahu | 3,867 SQFT  
10,026 SQFT Land | 4BR/3.5BA  
MLS# 202418717 | \$3,500,000

Distinctive Diamond Head luxury residence blending island sophistication with traditional Japanese design. This one-of-a-kind retreat features a tranquil central garden courtyard & koi pond that create a stunning entrance, while multiple sliding doors open to indoor/outdoor entertainment spaces, a pool, Pacific Ocean & Koko Head views. Features include a large ocean view living room, formal dining room, gourmet kitchen, tatami room, two primary suites, a guest bedroom, plus a studio with separate entrance for flexible living. This unique Diamond Head home offers a rare opportunity to embrace the ultimate island lifestyle.



**Sachi Braden**  
Sachi Hawaii  
CEO, Founder, & Principal Broker | RB-16308  
808.596.8801  
info@sachihawaii.com  
www.sachihawaii.com

ハワイの不動産売買、別荘管理、賃貸管理に関するお問合せは日本語でどうぞ  
サチハワイ総合不動産会社ーハワイ高級物件のエキスパート



**Atsuko Ajed**  
Sachi Hawaii  
Realtor Assoc., RS-66324  
808.780.4572  
atsuko@sachihawaii.com





\$3,450,000



## 61-173 LOKOEAL PL

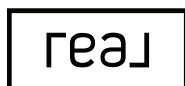
North Shore, Oahu | 1,668 SQFT  
124,277 SQFT Land | 6BR/4BA  
MLS# 202422027 | \$3,450,000

One of a kind property in the heart of Haleiwa. This property offers nearly 3 acres with 250 ft frontage on the Anahulu stream. It features a brand-new dock for boats, kayaks, and jet skis. Agriculture and business rental income opportunities. Scenic beauty with lush vegetation and waterways. It is conveniently located near Haleiwa town center. This rare investment opportunity combines natural beauty and income potential. Contact us today to schedule a viewing and explore endless possibilities! Note: The mailing/street entrance address is 61-173 Lokoea Place; the TMK Address is 62-405 Kamehameha Hwy.



### Lex Ferguson

RS-78101  
REAL Broker  
808.277.4715  
lex@lifeonoahu.com  
www.lifeonoahu.com



LUXURY

### Sean F. Ginella

RS-62324  
REAL Broker  
808.372.8700  
SeanGinella@me.com  
www.seanginellahawaii.com





# BREATHING ROOM

*with a view*

Hokuli'a on Hawai'i Island's Kona Coast provides a true sense of place, where you don't have to be just a guest but can become a resident. This luxury oceanfront community spans 1,260 acres and includes a Jack Nicklaus 18-hole signature golf course, private club amenities with extensive acreage, and a farm-to-table lifestyle with sweeping views from every lot.

HOKULI'A

Hokulia.com | (808) 731-4354

Hokulia@HawaiiLife.com



HAWAI'I LIFE

Forbes  
GLOBAL PROPERTIES





\$3,300,000



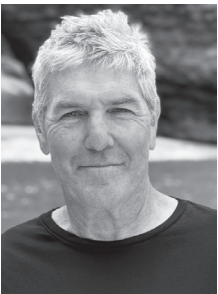
# 3570 KAWEONUI RD

Princeville, Kaua'i | 3,538 SQFT  
15,300 SQFT Land | 5BR/4.5BA  
MLS# 713745 | \$3,300,000

Escape to paradise in this stunning 5-bedroom, 4.5-bath vacation rental in a tranquil Princeville cul-de-sac. With breathtaking mountain views and a lush yard, this home boasts a floor plan maximizing natural light, space, and style. Two living rooms—one on each level—offer extra comfort. Exposed beams add elegance to the spacious interiors. The gourmet kitchen features granite countertops, stainless steel appliances, and a large dining area. The wrap-around lanai is perfect for BBQs and mountain views. Near the 1 Hotel, golf courses, and Hanalei, this home is ideal for families or as a vacation rental.



**Neal Norman**  
Director | Hawaii Life 1  
Realtor Broker  
808.651.1777  
neal@hawaiiilife.com  
www.nealnorman.com  
www.hl1.com





# ESCAPE

DISCOVER YOUR DREAM HOME



## NEW CONSTRUCTION LUXURY ESTATES

Located in the desirable neighborhood of Launiupoko, these thoughtfully envisioned luxury estates will be brought to life by one of Maui's premier custom home builders. Perched on the slopes of the West Maui Mountains, each property offers breathtaking ocean views, sweeping vistas of the outer islands, and stunning mountain panoramas. With gated homesites ranging from two to twelve acres, they provide the perfect setting to enjoy the serenity of a private oasis or cultivate a thriving tropical orchard while embracing sustainable island living. Floor plans expertly designed by a renowned Maui architecture firm are already in place, and the permit process is underway, eliminating the years-long wait typically required for new construction on Maui. This streamlined approach allows homeowners to secure their dream residence without the extensive delays of designing and permitting a home themselves. Construction stages vary from nearing completion to just getting started, offering the opportunity to collaborate with the design team to tailor finishes and details. Scan QR code for details, or reach out directly to discuss available opportunities.



**Diana Rodbourn**

REALTOR®(S) | RS-81738

Luxury Real Estate Agent

808.868.8759

diana@yestomaui.com

yestomaui.com



COMPASS



DIANA RODBOURN IS A LICENSED REAL ESTATE SALESPERSON AFFILIATED WITH COMPASS, A LICENSED REAL ESTATE BROKER AND ABIDES BY EQUAL HOUSING OPPORTUNITY LAWS. ALL MATERIAL PRESENTED HEREIN IS INTENDED FOR INFORMATIONAL PURPOSES ONLY. INFORMATION IS COMPILED FROM SOURCES DEEMED RELIABLE BUT IS SUBJECT TO ERRORS, OMISSIONS, CHANGES IN PRICE, CONDITION, SALE, OR WITHDRAWAL WITHOUT NOTICE. THIS IS NOT INTENDED TO SOLICIT PROPERTY ALREADY LISTED. PHOTOS MAY BE VIRTUALLY STAGED OR DIGITALLY ENHANCED AND MAY NOT REFLECT ACTUAL PROPERTY CONDITIONS.



\$2,970,000



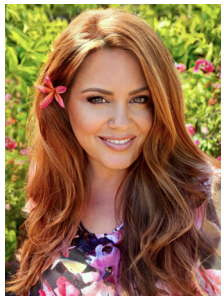
## 63 KUMU NIU PLACE

Launiupoko, Maui | 1,000+ SQFT | .5 AC  
3BR/2BA | MLS# 404122 | \$2,970,000

Nestled on the slopes of the West Maui Mountains, this gated, renovated home offers breathtaking ocean and mountain views. The open-concept design features a vaulted great room, 10-ft ceilings, and 8-ft wood doors. The spacious primary ensuite opens to a private outdoor shower, while two generous guest rooms provide comfort and privacy. Covered lanais invite year-round sunsets and whale watching. A heated pool, spa, and detached pool cabana—with its own bathroom and outdoor shower—create a true resort-style retreat. Lush tropical landscaping ensures privacy, while Launiupoko Beach Park is just minutes away. Fully furnished and move-in ready, offering the best of Maui living.



**Diana Rodbourn**  
REALTOR®(S) | RS-81738  
Luxury Real Estate Agent  
808.868.8759  
diana@yestomaui.com  
yestomaui.com





\$2,899,000



1108 AUAHI STREET  
PH3402

Honolulu, Oahu | 1,704 SQFT  
2BR/2BA | MLS# 202426052 | \$2,899,000

Unwind in this spacious 2-bed 2-bath unit in Anaha w/ den and 1,704 sf of living space. This prime unit comes with 2 parking spaces located close to the entrance and an in-demand storage room. The expansive open floor plan w/ 10-ft ceilings and spectacular floor-to-ceiling windows showcase panoramic views of the ocean, mountains, and Diamond Head. The kitchen is a chef's dream with Studio Becker custom cabinetry and a stunning Titanio Nero travertine island counter. Enjoy the building's resort-like amenities including excellent 24-hour concierge staff, large gym with sauna, steam room, heated pool, hot tub, and more.



**Esther Park Kusunoki**  
REALTOR®, Senior Vice President  
ABR CHMS CRS GRI SRS, RB-21002  
808.489.6733  
esther@eparkrealtor.com  
한국어 서비스 가능



List

**Sotheby's**  
INTERNATIONAL REALTY





3015 KALAKAUA AVE #401

Honolulu, Oahu | 1,082 SQFT | 2BR/2BA  
MLS# 202502324 | \$2,298,000

This exceptional oceanfront residence offers an exclusive living experience with just two units per floor. Nestled in the prestigious Diamond Head neighborhood of the coveted Gold Coast, this residence offers a lifestyle that most can only dream of. Situated near Kapiolani Park, Waikiki, Outrigger Canoe Club, Elks Club, Diamond Head, tennis/pickleball courts, restaurants, shops, and beaches, this property provides a unique connection to its stunning surroundings. With ceiling-to-floor pocketing sliding doors throughout and refreshing trade winds, you'll rarely need to use central AC. Owning the entire half-floor of the building allows for views from Diamond Head to the ocean and beyond. Dedicated parking stall and storage unit for added convenience. Enjoy unparalleled privacy, tranquility, and breathtaking vistas.



Sotheby's  
INTERNATIONAL REALTY



Drew Read

Realtor®  
RS-67769  
808.782.3636  
realestate@drewread.com  
drewread.com





\$1,999,000



VICTORIA PLACE #1806

Honolulu, Oahu | 895 SQFT  
1BR/1BA | \$1,999,000

Experience the best of island living in this stunning 1BR/1BA residence at Victoria Place, an ultra-luxury condominium newly completed by Howard Hughes. Located in one of Honolulu's most vibrant neighborhoods, this spacious "06" unit offers breathtaking panoramic ocean and city views through floor-to-ceiling windows that fill the home with natural light. The gourmet kitchen features high-end finishes, including a Sub-Zero refrigerator, Wolf range and Studio Becker Cabinetry. Just steps from Ala Moana Center and Ala Moana Beach Park, Victoria Place offers unmatched convenience. This resort-style building provides exceptional amenities, including a spa lounge, fitness center, yoga/pilates room, infinity and lap pools, cabanas, theater, meeting rooms and more.



**Sandie Choe-Yamasato**  
REALTOR®, RB-22135  
R, AHWD, CIPS, GRI  
Locations LLC  
Direct: 808.679.1714  
sandie.choe@locationshawaii.com



**Mia Lin**  
REALTOR®, RS-85700  
Locations LLC  
Direct: 808.866.9336  
mia.lin@locationshawaii.com







\$7,495,000



WAILEA, MAUI | 3,647 SQFT | 3BR/2.5BA | MLS#404557 | \$7,495,000

### 3898 WA'AKAULA PLACE

Experience front-row luxury in Wailea Golf Estates, where panoramic ocean views meet refined island living. Enjoy seamless indoor-outdoor design with exquisite finishes throughout. [www.WaileaGolfEstates.info](http://www.WaileaGolfEstates.info)



\$7,950,000

WAILEA, MAUI | 4,588 SQFT | 3BR/3.5BA | MLS# 404575 | \$7,950,000

### 3885 WAILEA EKOLU

This Wailea Golf Estates masterpiece offers panoramic ocean views, indoor-outdoor living, and an infinity pool. Elegant details include a chef's kitchen and a glass elevator, defining Maui luxury. [www.Wailea.info](http://www.Wailea.info)



#### Robert H. 'Robbie' Dein

Broker-Owner, ABR, CRS, RSPS | RB-18398  
Maui Real Estate Advisors, LLC  
Direct: 808.250.3564  
[Robbie@MauiRealEstateAdvisors.com](mailto:Robbie@MauiRealEstateAdvisors.com)



Maui's Only Realtor Recognized as a "Top 100 State of Hawaii Realtor" Among 15,000+ (17+ Consecutive Years)  
Honored As "Top 100 Hawaii Realtors Hall of Fame/Top Performers," Hawaii Business Magazine (2006-2024)  
60+ Years of Successfully Representing Buyer & Seller Maui Real Estate Transactions Totaling Over \$1 Billion

Information herein may contain inaccuracies and is provided without warranty or guaranty of any kind. Buyer must independently verify any information they deem material or important.

#### Kenneth M. 'Ken' Hayo

Principal Broker-Owner | RB-15529  
Maui Real Estate Advisors, LLC  
Direct: 808.283.8435  
[Ken@MauiRealEstateAdvisors.com](mailto:Ken@MauiRealEstateAdvisors.com)







# Island of Lana‘i, Manele - Ocean Views - Privately Owned

Rarely available this nearly 1 acre lot is located within the luxury Manele District and is ready to build. Utilities to site. Sold with architectural/engineering plans for a 4,700 sf energy efficient home. Backs up to 9<sup>th</sup> green of Lana‘i Golf Course, has ocean views and is a 5 minute golf cart ride to Golf Club and Four Seasons Resort.

**\$2,588,000** | **39,874** sf Land | **Last Privately Owned Lot in Luxury Cul-de-sac** | MLS 403596



## Luxury Condo on Island of Lana‘i

Huge Ocean Views - Private Courtyard - 2 Car Garage  
2 Four Seasons Resorts & Golf Membership Eligibility - Ask agent for details

**\$3,152,000** | **2BR / 2.5BA** | **1,972** sf Living | MLS# 404530



## 1203 Lanai Avenue, Lana‘i City

2 Dwellings - Long Term Rental - Lanai City Living - 2 Blocks from Dole Park  
Opportunities abound on this remodeled house and newly built Ohana.

**\$895,000** | **3BR / 3BA** | **6,625** sf Lot | MLS# 403040



**Sherri Williams**  
REALTOR-SALESPERSON  
**415.302.9894**  
**SherriWilliams@HawaiiLife.com**  
**LanaiRealEstateSherri.com**



Office: 10 Ho‘ohui Road, #301, Lahaina, HI 96761  
**HawaiiLife.com** | RB-19928





There's one sure way to protect your high net worth portfolio in Hawaii.

# ALOHA INSURANCE SERVICES



Tad Nottage



Jeff Garff



Phyllis Miyashiro

Serving All Islands

*Exceeding Your Expectations*

Risk Management | Customized Policies | Personal Service



[AlohaInsurance.com](http://AlohaInsurance.com)  
**808-334-0044**

Proudly Offering  
**pure**  
INSURANCE  
A member of the Tokio Marine Group

# GET

6 ISSUES OF  
**LUXURY HOME**  
MAGAZINE

*Delivered*  
TO YOUR DOOR



An annual subscription  
is just a click away.

**SUBSCRIBE**

[pacificluxuryliving.com/subscribe](http://pacificluxuryliving.com/subscribe)





A STATELY STUDY FOR TONS OF TOMES  
SEE PAGES 10 & 11



# NOTABLE SALES

Our Luxury Agents have been busy securing prime real estate for their clients.

Here, we share some featured deals. **Clients of *Luxury Home Magazine*® are noted in bold.**



**CLOSED AT \$5,500,000**

**Kukui'ula, Kahalawai 40, Kauai | Closed at \$5,500,000**

Listed by: **Jeff Skinner & Suzanne M. Harding, Kukuiula Realty Group**

Buyer's rep: Tracey L. Harvey, PIKO Realty

**2549 Tantalus Drive, Oahu | Closed at \$10,500,000**

Listed by: **Sachi Braden, Sachi Hawaii**

Buyer's rep: Undisclosed

**4505 Kahala Avenue, Oahu | Closed at \$15,000,000**

Listed by: **Tracy Allen, Coldwell Banker Realty**

Buyer's rep: **Tracy Allen, Coldwell Banker Realty**

**3919 Noela Place, Oahu | Closed at \$8,700,000**

Listed by: **Tracy Allen, Coldwell Banker Realty**

Buyer's rep: Sandra ML Mann-Hawkins, Honolulu Property Advisors LLC



**CLOSED AT \$4,300,000**

**73 Pua Niu Way, Maui | Closed at \$4,300,000**

Listed by: **Diana Rodbourn, Compass**

Buyer's rep: Jan Bryan, Coldwell Banker Island Properties

**477 Laulea Place, Maui | Listed at \$11,500,000**

Listed by: **Josh Jerman, Hawaii Life**

Buyer's rep: **Josh Jerman, Hawaii Life**

**47 Kailuana Place, Oahu | Closed at \$15,888,000**

Listed by: Joel Cavasso & Sherine Duncan, eXp

Buyer's rep: **Olivia Sadeler, Compass**

**21 Kui Place, Maui | Closed at \$2,300,000**

Listed by: Kim McLaughlin, Island Sotheby's International Realty

Buyer's rep: **Robert R. Myers, Coldwell Banker Island Properties**



**CLOSED AT \$3,500,000**

**4640 Aukai Ave, Oahu | Closed at \$3,500,000**

Listed by: **Sachi Braden, Sachi Hawaii**

Buyer's rep: Itoko Leciejewski, Sachi Hawaii

**295 Haniu Street, Maui | Closed at \$6,800,000**

Listed by: **Diana Rodbourn, Compass**

Buyer's rep: **Diana Rodbourn, Compass**

**Kaanapali Alii Unit 1-706, Maui | Closed at \$5,650,000**

Listed by: **Greg & Leah Harbottle, Gregory Harbottle Inc.**

Buyer's rep: **Greg & Leah Harbottle, Gregory Harbottle Inc.**

**4616 Aukai Avenue, Oahu | Closed at \$3,900,000**

Listed by: **Tracy Allen, Coldwell Banker Realty**

Buyer's rep: **Tracy Allen, Coldwell Banker Realty**





Hapuna Estates at Mauna Kea Resort includes homesites, estate homes and condominium residences with 30-mile coastline views, and the countless amenities of this legendary resort.

Homesites from \$2.5M - \$7.9M

Residences from \$4.8M - \$25M

For Hapuna Estates, obtain the Developer's Public Report for a Condominium required by Hawaii law and read it before signing a binding sales contract. No federal or state agency has judged the merits or value, if any, of these properties. This does not constitute an offer to sell or a solicitation of any offer to buy where prohibited by law.





*i am*  
**SHOHEI  
OHTANI**



SHOHEI OHTANI IS BUILDING HIS WINTER HOME AT  
THE VISTA AT MAUNA KEA RESORT.



**Hapuna Estates**  
AT MAUNA KEA RESORT

808.557.8689 | [Info@MaunaKeaLiving.com](mailto:Info@MaunaKeaLiving.com)  
[MaunaKeaLiving.com](http://MaunaKeaLiving.com)



\$12,000,000



HAPUNA BEACH  
RESIDENCES AT  
MAUNA KEA  
RESORT, A31

Kamuela, Big Island | 3,543 SQFT  
4BR/4BA | MLS# 708687 | \$12,000,000

Developed as luxury condominiums in 2019, Hapuna Beach Residences at Mauna Kea Resort has quickly become sought-after residences and a dream vacation destination on the Big Island of Hawaii. A31 is a very special residence; a 4.5-bay 4-bedroom penthouse with a den which used to be a model unit. It enjoys the beautiful close-up views of Hapuna Beach and has a 2-bay, grand living area and a large open kitchen. Owners can enjoy the amenities within the Mauna Kea Resort, including the room service at the Westin Hapuna. A31 has a short term vacation rental registration and will be sold furnished. A31 is a perfect beach villa, ready for you to move in or use it as an investment property.



**Tomoko Matsumoto**  
REALTOR® Principal Broker, Owner  
Hapuna Realty  
68-1330 Mauna Lani Drive, Suite 104 Kohala Coast, HI 96743  
[www.HapunaRealty.com](http://www.HapunaRealty.com) | [Tomo@HapunaRealty.com](mailto:Tomo@HapunaRealty.com)  
808.557.8689







\$28,000,000



## 69-1532 PUAKO BEACH DR

Puako Bay, Big Island | 5,360 SQFT  
6BR/6BA | MLS# 712293 | \$28,000,000

Puako Bay Lot 1, Kahienuana (a place to relax and enjoy the company of loved ones), is one of the most amazing offerings in the area; custom-designed, contemporary, yet comfortable residence on a 2+ acre bay-front estate lot. It is the ultimate dream estate with 5 en suites plus a bunk room/office+full bath, a tennis court, swimming pool, a sand volleyball court and a small black sand bay in front. This incredible property is located on a terraced and elevated oceanfront parcel in charming and authentic Puako on the Kohala Coast of the Big Island. Amazing sea life abounds in nearby reef, including turtle cleaning stations, colorful tropical fish and manta and spotted eagle rays. Beach 69, a local secret, is only a 10 minute walk with waves, white sand, and great snorkeling. The beloved Mauna Kea Resort is only a 5 minute drive away.



### Tomoko Matsumoto

REALTOR® Principal Broker, Owner  
Hapuna Realty  
68-1330 Mauna Lani Drive, Suite 104 Kohala Coast, HI 96743  
www.HapunaRealty.com | Tomo@HapunaRealty.com  
808.557.8689







## *Find Your Dream Home*

**KUKUI'ULA IS A LUXURY PRIVATE CLUB DEVELOPMENT ON KAUA'I, SPANNING 1,010 ACRES WITH HOMES & HOMESITES FEATURING STUNNING OCEAN AND MOUNTAIN VIEWS, AND SURROUNDED BY WORLD-CLASS AMENITIES.**

*Homesites starting from \$1,475,000 • Homes starting from \$4,995,000*

View our Featured Home Listings on Pages 38 & 39



### **CONTACT US TODAY**

to discuss this listing and others within the Kukui'ula community.

#### **SUZANNE M. HARDING (RB)**

Sales Executive | [smharding@kukuiula.com](mailto:smharding@kukuiula.com)

#### **JEFF SKINNER (R)**

Sales Executive | [jskinner@kukuiula.com](mailto:jskinner@kukuiula.com)

#### **HEATHER CARVER (RA)**

Licensed Sales Assistant | [hcarver@kukuiula.com](mailto:hcarver@kukuiula.com)



**808.742.0234 | [INFO@KUKUIULA.COM](mailto:INFO@KUKUIULA.COM) | [KUKUIULA.COM](http://KUKUIULA.COM)**

**HOMES | CLUBHOUSE | GOLF | SPA + FITNESS | ORGANIC FARM | POOLS | DINING | ADVENTURE OUTFITTERS**

Kukui'ula Realty Group, LLC is a real estate brokerage licensed by the State of Hawaii and abides by Equal Housing Opportunity laws. LICENSED AS RB-20320. All material presented herein is intended for informational purposes only and is compiled from sources deemed reliable but has not been verified. Obtain the Property Report required by Federal law and the Public Offering Statement required by Hawaii law and read them before signing anything.



Luxury Home Magazine®

HAWAII

Issue 20.1