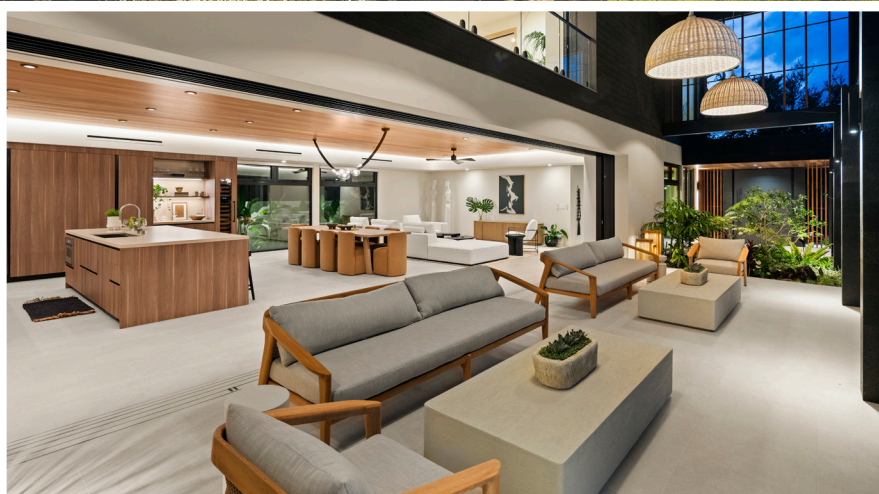




\$11,500,000



## 4543 AUKAI AVENUE

Honolulu, Oahu | 7,519 SQFT | 11,754 SQFT Land | 5BR/5.5BA | MLS# 202515828 | \$11,500,000

This stunning brand-new modern 5BD/5.5BA Kahala home combines sleek architecture & resort-style comfort. Iroko wood accents, Shou Sugi Ban siding & natural lava stone add warmth & texture. Verdant lawns wrap the pool & spa amid tropical grounds w/ palms & flowering trees. Dramatic covered lanais create true indoor-outdoor living & the poolside pavilion is perfect for dining al fresco. The chef's kitchen

boasts premium appliances, Italian cabinetry & a spacious island w/ Dekton counters & dine-in seating. The expansive primary suite offers oak floors, luxurious walk-in closet & a tadelakt plaster spa bath. A sculptural staircase, statement lighting, air conditioning, elevator & 3-car garage complete this rare offering. Seldom does a home of this caliber ever come to market in Hawai'i. Truly exceptional!



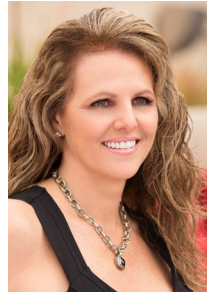
**COLDWELL BANKER**  
**REALTY**

© 2024 Coldwell Banker Realty | 1585 Kapiolani Blvd., Suite 1010, Honolulu, HI 96814 | (808) 596-0456 The information contained herein, while not guaranteed, has been obtained from sources believed to be reliable. All square footages are approximate and may differ from the tax records.



*Tracy Allen*  
**HAWAII**  
LOCAL EXPERTISE | GLOBAL REACH

**Tracy Allen**  
Vice President, REALTOR®, RS-46610  
Global Luxury Ambassador  
Luxury Property Specialist  
808.927.6415  
Tracy@TracyAllenHawaii.com  
www.TracyAllenHawaii.com  
#1 Agent in Hawaii, Coldwell Banker Realty







\$16,900,000



176 HANAPEPE LOOP

Honolulu, Oahu | 9,287 SQFT  
20,312 SQFT Land | 6BR/7BA/1Half BA  
MLS# 202513981 | \$16,900,000

*Sophisticated, Modern, Unlimited Ocean Views....* Designed to relish in the beauty of magnificent indoor spaces coupled with a seamless integration to expansive outdoor living this stunning ultra-luxury residence designed by renowned Hawaii Architect Jim McPeak offers uninterrupted Diamond Head, ocean, and coastline views and the best direct sunset vistas on the island. Situated on Oahu's Southeastern shoreline overlooking Maunaloa Bay this breathtaking 6-bedroom, 7-full and one-half bath residence offers exceptional appointments and a true private luxury resort experience.



\$7,750,000



1122 MOKULUA DRIVE

Kailua, Oahu | 3,384 SQFT  
13,000 SQFT Land | 5BR/4BA  
MLS# 202516042 | \$7,750,000

The classic 5BD beach house is located on iconic Lanikai Beach in Kailua, known for its turquoise waters & views of the twin Mokulua Islands. This fabulous spot near the end of the beach offers privacy on a spacious 13,000 SF parcel. The flexible floor plan is ideal for extended family living, work-from-home options & includes an elevator for added ease. The private primary suite on the upper level enjoys sweeping seaside views & its own balcony. The main level offers 3BD/2BA, kitchen w/ dine-in seating & open living/dining areas that flow to a lanai overlooking the tropical yard & ocean. Lower level has separate 1BD/1BA guest suite w/ kitchenette & sitting area. Must-see!



*Tracy Allen*  
**HAWAII**  
LOCAL EXPERTISE | GLOBAL REACH

**Tracy Allen**  
Vice President, REALTOR®, RS-46610  
Global Luxury Ambassador  
Luxury Property Specialist  
808.927.6415  
Tracy@TracyAllenHawaii.com  
www.TracyAllenHawaii.com  
#1 Agent in Hawaii, Coldwell Banker Realty







\$4,750,000



4758 AUKAI AVENUE

Honolulu, Oahu | 4,217 SQFT  
11,250 SQFT Land | 4BR/3.5BA  
MLS# 202514893 | \$4,750,000

Premier Kahala Location on coveted Aukai Avenue. This stunning single-level home offers 3 bedrooms plus a den & 2.5 baths in the main residence, vaulted ceilings, hardwood floors, & seamless indoor-outdoor living. The spacious family room with limestone floors flows to a tropical backyard oasis with swaying palms, grassy lawn & a large tiled pool. A fabulous gourmet kitchen features a gas cooktop, double ovens, walnut cabinetry & an island with seating. A private 1-bed, 1-bath pool house with lounge & wet bar overlooks the pool, hot tub, & sundeck, perfect for entertaining. Fully walled & gated with a rare 3-car garage, near beaches, golf, dining & more. This charming home embodies true island living!



\$3,395,000



4356 AUKAI AVENUE

Honolulu, Oahu | 3,637 SQFT  
11,989 SQFT Land | 5BR/4BA  
MLS# 202512860 | \$3,395,000

Unbeatable Kahala location near beaches, golf & more! This spacious 5BD/4BA home offers a flexible floor plan, rich hardwood floors & dual living/lounge areas for relaxing or entertaining. Enjoy vaulted ceilings & large windows that open to a wraparound lanai & private grassy lawn. The kitchen features stainless appliances, wraparound counters & a pass-through w/ dine-in seating. Three BD & two BA on the main level, including a side-entry room perfect for guests, in-laws or a home office. Upstairs offers a guest room, lounge w/ wet bar & a private primary suite w/ peaceful garden views. Experience indoor-outdoor living near the Kahala Hotel, golfing, beaches, dining & more.





\$2,595,000



87-835 FARRINGTON  
HIGHWAY

Ma'ili Point, Oahu | 2,814 SQFT  
22,225 SQFT Land | 4BR/2BA  
MLS# 202515148 | \$2,595,000

Welcome to Maluhia, a serene beachfront retreat on O'ahu's West shore. This gated 4BD/2BA home at Ma'ili Point sits on a 22,225 Sq. Ft. lot with 111 feet of direct beach frontage. Designed by mid-century architect Edward Sullam, the U-shaped layout connects three structures with covered walkways around an spacious Hau Tree Lanai—an open-air living room for relaxing or gathering. Enjoy surfing, snorkeling, and sunsets just steps from your door, plus seasonal whale and dolphin sightings. With two private bedroom wings and a central great room that opens to the sea, Maluhia offers classic island charm and relaxed indoor-outdoor living.



**Tracy Allen**  
Vice President, REALTOR®, RS-46610  
Global Luxury Ambassador  
Luxury Property Specialist  
808.927.6415  
Tracy@TracyAllenHawaii.com  
www.TracyAllenHawaii.com  
#1 Agent in Hawaii, Coldwell Banker Realty

Tracy Allen  
HAWAII  
LOCAL EXPERTISE | GLOBAL REACH



**COLDWELL BANKER  
REALTY**

© 2024 Coldwell Banker Realty | 1585 Kapiolani Blvd., Suite 1010, Honolulu, HI 96814 | (808) 596-0456 The information contained herein, while not guaranteed, has been obtained from sources believed to be reliable. All square footages are approximate and may differ from the tax records.